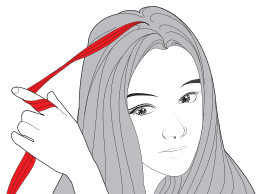
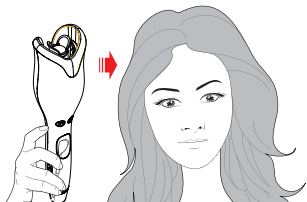
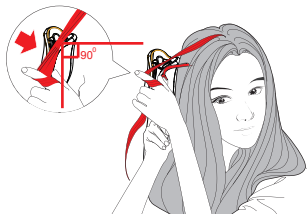


# How to style with **CHI**AIR® Spin n Curl



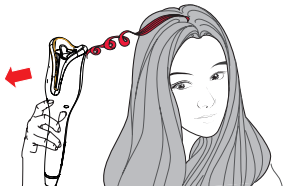
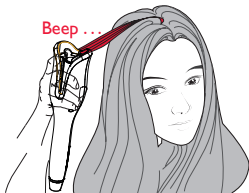
1. Choose your desired temperature and curling timer as a guide (15S/17S/19S).
2. Hold the CHI Spin n Curl vertically with the digital control side facing the head.

3. Take a  $\frac{3}{4}$ " to 1" section of hair and insert it into the opening of the curl chamber in a 90° angle. If larger sections are used, hair may be tangled.



4. Insert sectioned hair into the curling chamber.

5. Press and continuously hold the arrow button in the desired direction to curl the hair. The hair strand will be automatically curled into the chamber and the rotating will stop.

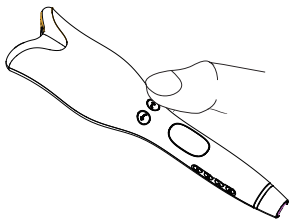
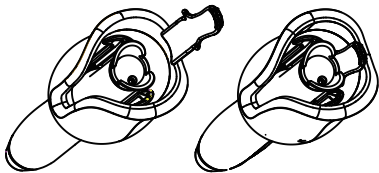


6. You will hear 4 beeps once the curl is set.

7. Remove the tool gently from the hair.

# Cleaning

1. Clean the surface of the Spin n Curl with a damp cloth.
2. Turn on the Spin n Curl by pressing the power button.
3. Insert the barrel cleaner into the curling chamber in correct position below.
4. Press the left or right arrow buttons to automatically remove residue. For safety purposes, the Spin n Curl stops heating up when the cleaning function is active.
5. Recommend cleaning the Spin n Curl once a week



## Tips

- Use a smaller section of hair for defined curls.
- Use a larger section of hair for less defined curls.
- If hair becomes tangled, the Spin n Curl will beep continuously and the display will read RESET. Push the power button on the Spin n Curl to turn off and gently remove the tangled hair by pulling out thin strands, section by section, until all the hair has been removed.