



Bluetooth® Mini Touchpad Keyboard



Model: WKB-7010

QuickGuide

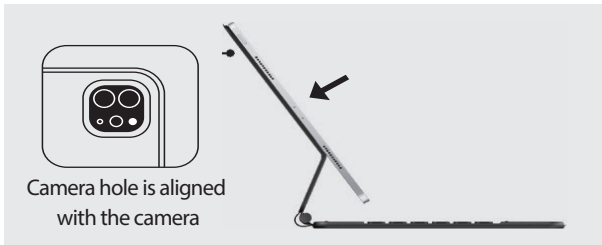
English

www.adesso.com

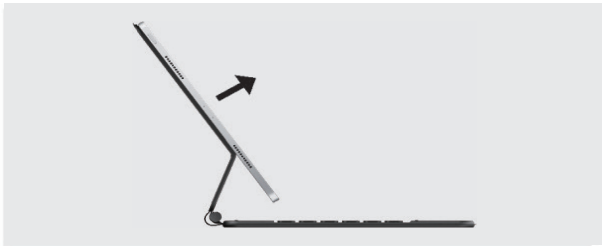
1

Installation

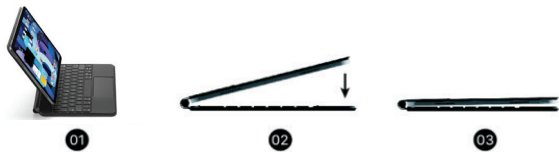
1. Installation - Set iPad on the magnetic stand as shown below



2. Removal - Pull up to remove your iPad from the stand



3. Mobility - You can place the iPad in the case and fold the case for easy portability



4

Power on indicator

1. Turn ON, the red light is always on for 1 second and then goes off. When the power is less than 20%, the red light flashes slowly to indicate low battery. Turn OFF, the keyboard stops working.

Bluetooth connection method

a. Turn ON, the red light is always on for 1 second and then goes off, Bluetooth indicator flashes to enter pairing state.

b. Re-pairing, long press key for 3 seconds to enter pairing mode, blue light flashes 3 times per second to enter pairing mode, the fast broadcast time is 180 seconds, blue light is off when the pairing is successful; if the pairing is not successful, the backlight and other indicators all go off and the keyboard goes into sleep mode.

Reconnect bluetooth indicator

3. After the first pairing is successful, turn off the keyboard and turn on the keyboard, and then automatically enter the bluetooth reconnection mode. The blue light flashes 3 times per second to enter the reconnection state. The blue indicator turns off after successful connection within 5 seconds. If the connection is not successful, the backlight and other indicators are all off, and the keyboard enters sleep mode.

Charging indicator

4. When Type-C charging, the red light is always on. The red light is off when fully charged, and the green light is always on. Low battery indicator: When the battery power is less than 20% (3.2v), the red light starts to flash slowly (1 time per second) until the keyboard is turned off.

CapsLk indicator

5. Uppercase/lowercase ON/OFF, the white indicator light is always ON/OFF, after connection to an Ipad, open Settings - General - Physical Keyboard - Turn off using the caps lock key to switch languages.

Keyboard enter sleep mode

6. The keyboard stops pairing if the user does not operate the keyboard within 3 minutes or when the keyboard is abnormally connected, the backlight and other indicators are all off, and the keyboard enters sleep mode; after pairing and normal use, the keyboard does not operate for 30 seconds, the backlight is off, and the keyboard enters the standby state. If the keyboard is not used for 10 minutes, it enters sleep mode and can be woken up by pressing any key on the keyboard (the touchpad will not wake it up). When the battery power is lower than 15% (3.1-3.5v), the backlight is turned off; when the battery power is greater than 20%, the backlight is turned on.

7

LIMITED WARRANTY

Adesso provides a one year limited warranty for all of its products against defects in material and workmanship.

During this period, Adesso will repair or replace any product which proves to be defective. However, Adesso will not warranty any product which has been subject to improper freight handling, shipping abuse, neglect, improper installation or unauthorized repair. The warranty will not cover products installed with components not approved by Adesso and products where the sealed assembly trace has been broken.

If you discover a defect, Adesso will, at its option, repair or replace the product at no charge to you provided you return it during the warranty period with freight charges pre-paid to Adesso. Before returning any product, you must obtain a Return Merchandise Authorization number (RMA). This RMA # must be clearly marked on the outside of the package you are returning for warranty service. Be certain to also include your name, shipping address (no PO Boxes), telephone number, and a copy of the invoice showing proof of purchase in the package.

SUPPORT

We have listed most of our FAQ's (Frequently Asked Questions) at: <http://www.adesso.com/faqs.asp>. Please visit our FAQ Service & Support pages before you contact our E-mail or Telephone Support.

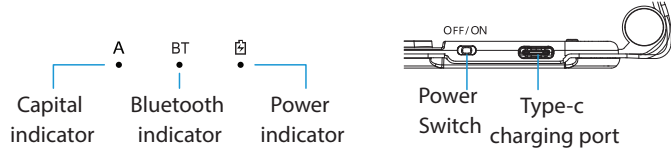
Email Support: If our FAQ's do not help you resolve your issues, please email support@adesso.com

Telephone Support:
Toll Free: (800) 795-6788
9:00AM to 5:00PM PST Monday - Friday

2

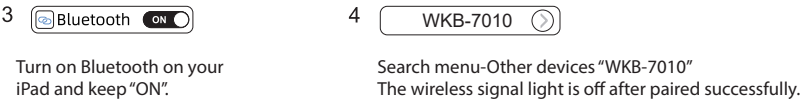
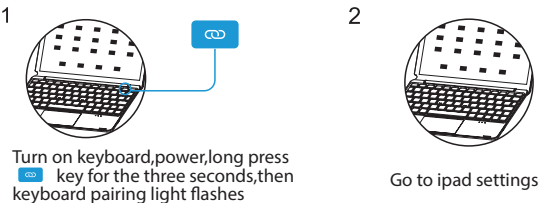
Keyboard Description

** Please read the operating instructions carefully before use **



Connection

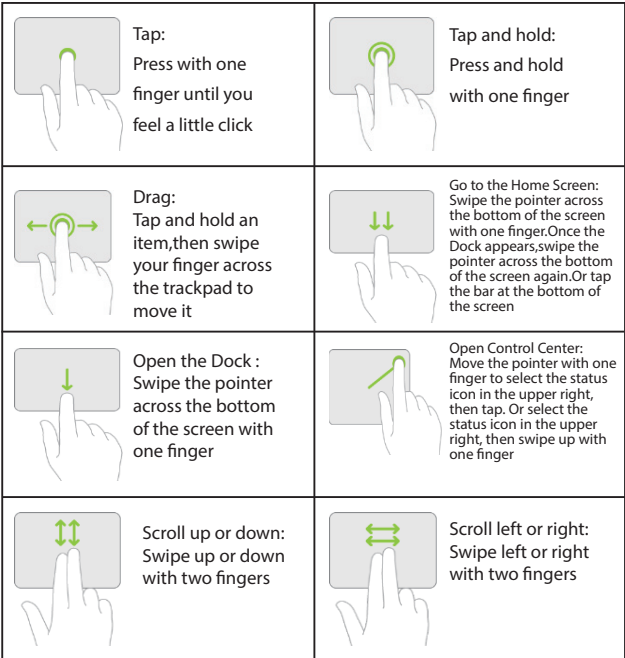
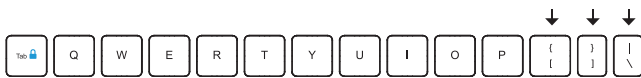
Connect with your iPad



5

Reset settings

7. Press + + for 3 seconds then indicator flashes 3 times to clear the keyboard pairing information and return to the second level of white backlight



8

INTRODUCTION

Simply designed for convenience and utility, the Bluetooth keyboard combined with a cover that converts into a stand holding the iPad 11 version. Turn your mobile device into a mobile workstation wherever you are. The slim case magnetically secures and protects the tablet and keyboard when traveling. The low profile scissor-switch keys provide a tactile response for faster typing. At only 6mm thick, the lightweight yet sturdy aluminum keyboard works equally well on the road or in your

SPECIFICATIONS

Connection:	Bluetooth 5.1
Operating Distance:	10 m
Modulation System:	GFSK
Working Voltage	3.3-4.2V
Charging Current:	250 mA
Standby Time:	90 days
Lithium Battery Capacity:	450 mAh
Continuous Working Time:	< 2.5 hours (backlit on), 150 hours (backlit off)
Charging Time:	< 3 hours
Lithium Battery Life:	3 years
Key Life:	> 5 million strokes
Operating Temperature:	-10-55°C

REQUIREMENTS

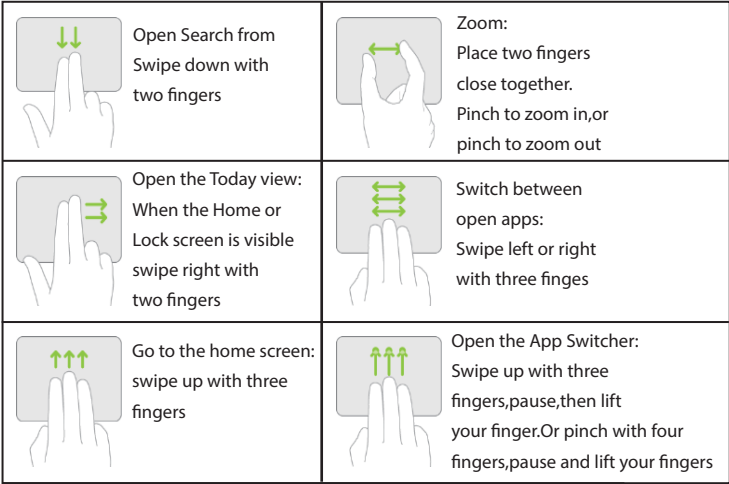
• Bluetooth® 5.1, 5.0, 4.0 / iPad Pro 11 2018/2020/2021/2022 (10.9" /11") 4th gen 2020, 5th gen 2022, 6th gen 2024 (M2)

3

Description of Function Keys

Button Icon	System Function of iPad 11 inch	Button Icon	System Function of iPad 11 inch
	Fn+ this key: Home		Fn+this key: Search
	Fn+ this key: Virtual keyboard		Fn+this key: Screenshot
	Fn+ this key: Reduce brightness		Fn+this key: Increase brightness
	Fn+ this key: Previous song		Fn+this key: Play/Pause
	Fn+ this key: Next song		Fn+this key: Mute
	Fn+ this key: Volume-		Fn+this key: Volume+
	Long press to pair		Fn+this key: Lock screen
	Press this key to switch languages		Fn+this key: Brightness of the light
	Fn+This key: change backlight colors		Double-click this key for voice input
	Fn+This key: Beginning of the line		Fn+this key: The end of the line
	Fn+This key: Beginning of the page		Fn+this key: The end of the page
ON/OFF	Power switch Pull up ON and pull down OFF	Awake Siri	Open Settings → Siri and Search → Press the top button to use Siri → +S key

6



9