

PLCMTR70 MANUAL



7" HD Dual Mount Monitor & Waterproof Rearview Backup Camera System, TFT LCD Digital Panel, Dual DC 12-24V (for Bus, Truck, Trailer, Van, etc.)

Please read instructions carefully before installation and use. Installation should be performed by a professional installer. To ensure your safety, the driver should not watch videos or operate features on the monitor while driving. There are no serviceable parts in this unit, do not disassemble or try to repair this unit. If the unit malfunctions please return to your vendor or send to a Pyle repair facility. Please observe and obey the local laws and regulations when installing the unit.

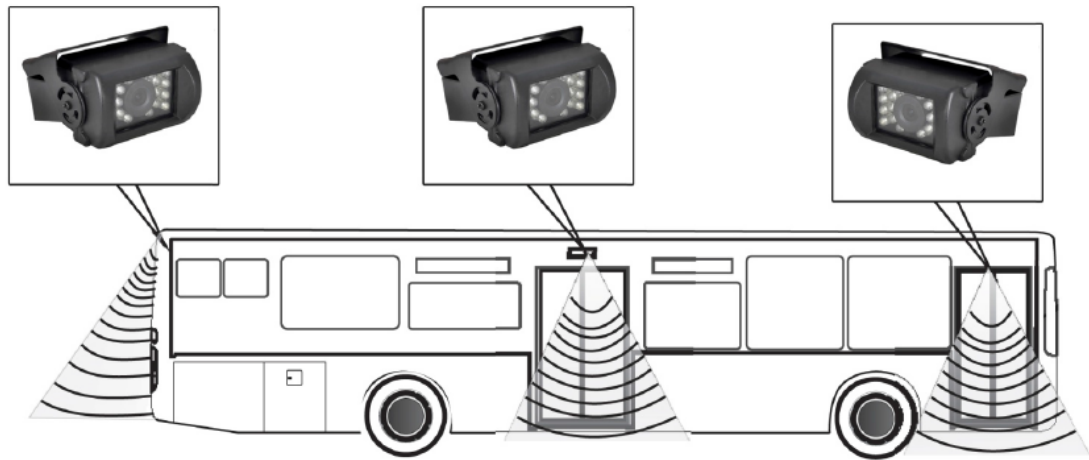
Upon Installation, please make sure as to not to interfere with any of the vehicle's safety features, wiring, components, etc. We are not responsible for any damages, injury, malfunctions or otherwise noted due to faulty or non-professional installation.

Connection

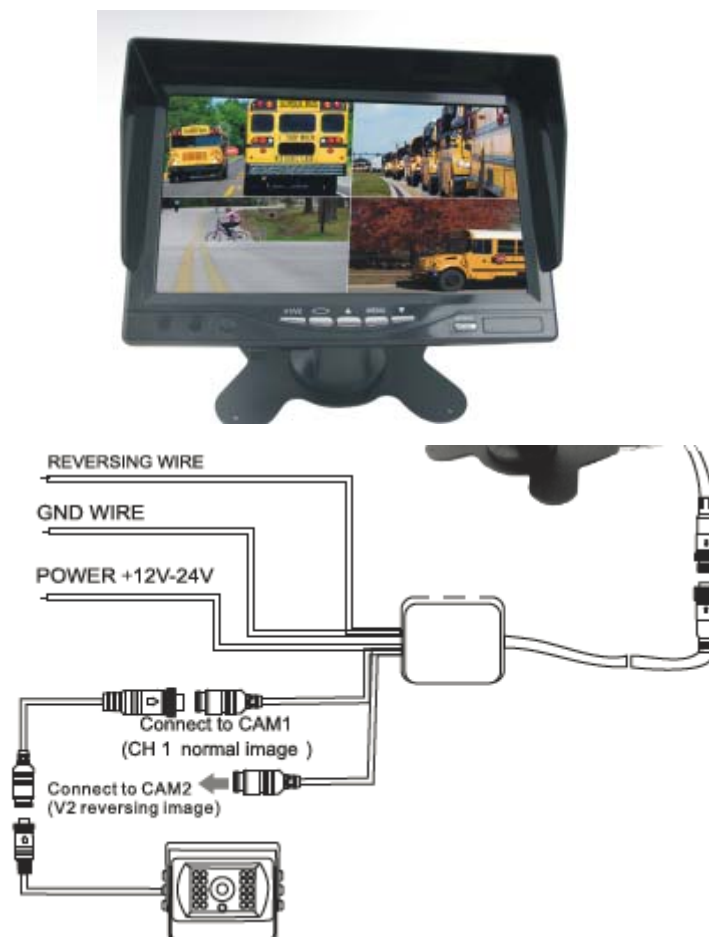
Connect the camera's threaded locking 4-pin cable connectors into the female receiving connection of the included 4-pin extension cables. The extension cables then connect to your compatible video monitors with 4-pin receiving connectors. The threaded locking cable connectors of the camera serve to provide power and video for all cameras.

Please remember to disconnect your vehicle's battery prior to any connection / installation. Use the included wiring harness to provide power and video signals to your monitor. There are colored wires to assist in the video camera system setup. See the wiring diagram for connections between cameras, monitor and your vehicle.

Versatile Mounting Installation






Wiring & Connection



The Reverse trigger cable is for the Ch1, so please connect the reverse backup camera to the Ch1, so when the truck in reverse status, the reverse camera would be priority.

Monitor Buttons:

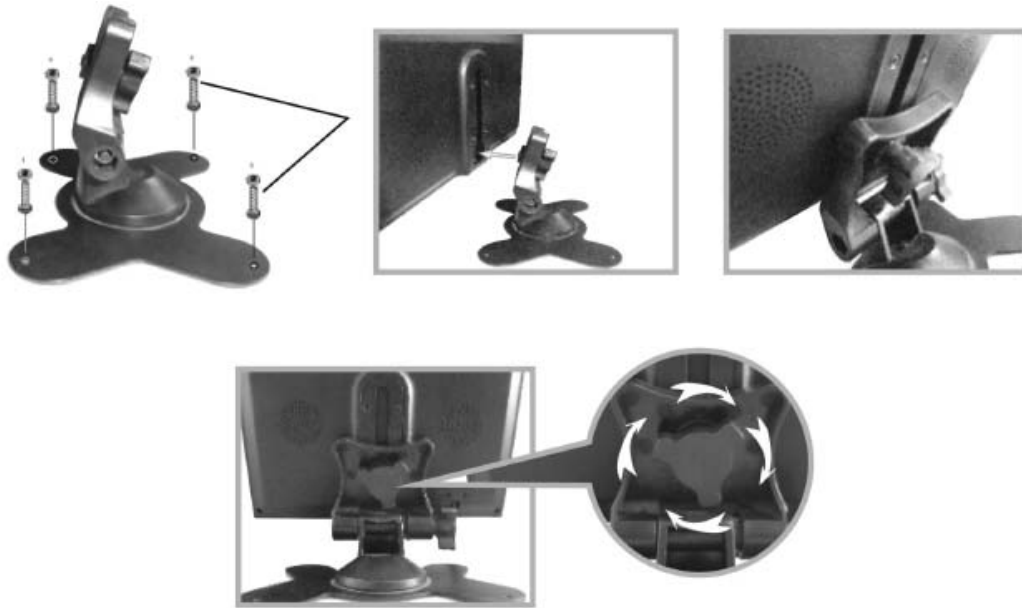


1. V1/V2: Switch the ch1 and ch2
2.  This button for reverse the picture image left and right
3. Menu: Adjust the color, brightness, etc.
4. Power button
5.   Increase/Decrease

Remote Control



Monitor Stand Mounting



1. Set the mount stand in the desired location, then use screws to secure the mount stand into location. Please make sure as to set a location free from vehicle obstruction including any wiring, or location where it may obstruct the driver's view, driving conditions, etc.
2. Attach the metal buckle piece on top of the fan shaped mount stand, and slide it into the receiving slot in back of the display monitor assembly. This metal buckle should slide in and up to the monitor assembly.
3. Set the desired position/height of the buckle into the monitor assembly.
4. Tighten the clamp-style knob in the back of the stand mount to secure the monitor in the desired position.
5. The angle / tilt position of the stand mount is also adjustable. Located toward the base of the stand mount is another clamp-style knob.