



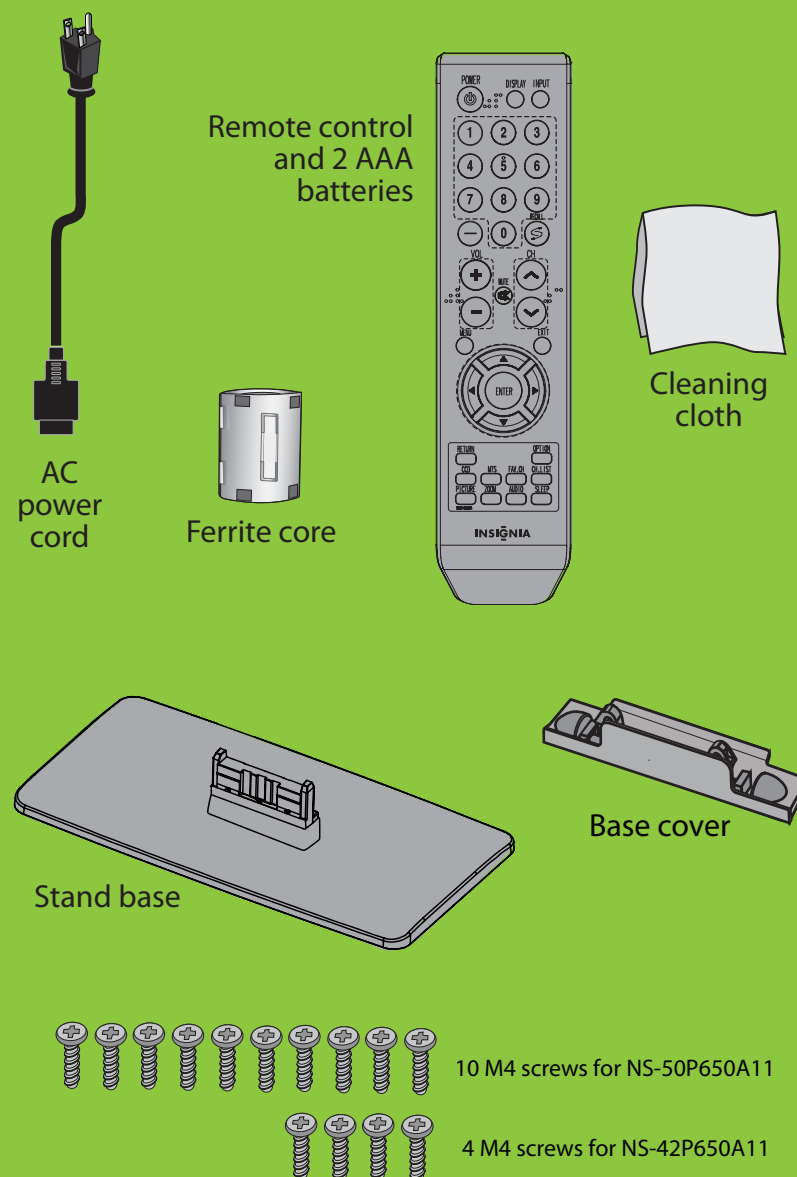
42" / 50" 720p Plasma TV

## QUICK SETUP GUIDE

NS-42P650A11, NS-50P650A11

### Thank You

for purchasing this fine Insignia television.  
We hope you enjoy the quality and reliability  
of this product for years to come.

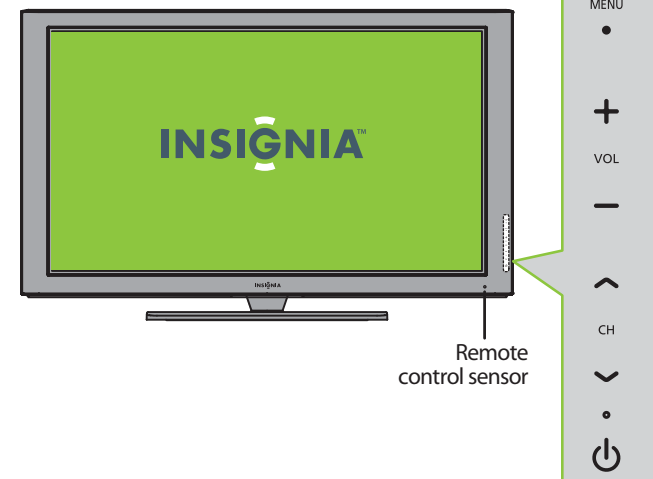


### WE ARE GOING GREEN!

A copy of your *User Guide* is not provided in the box but is available online. Go to [www.insigniaproducts.com](http://www.insigniaproducts.com), click **Support & Service**, enter your model number in the *Product Search* field, then click **Search**.

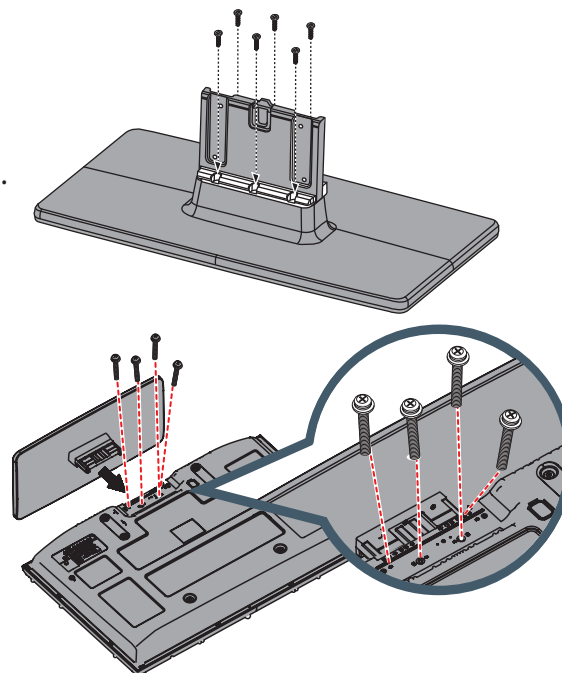


### Front features



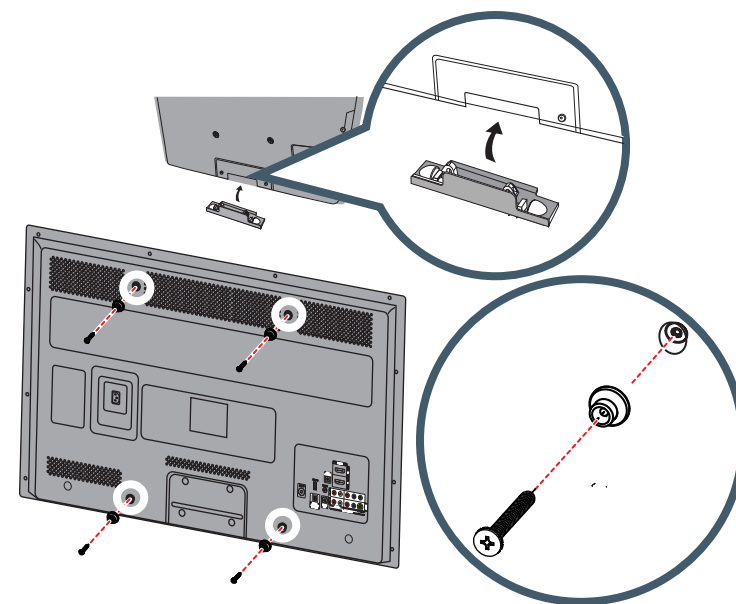
### Installing the stand

- 1 Slide the guide stand into the stand base, then secure the guide stand to the stand base with the six M4 x L12 screws included. (NS-50P650A11 only).
- 2 Carefully place your TV screen face-down on a cushioned, clean surface to protect the screen from damages and scratches, then slide the stand into the TV.
- 3 Secure the TV to the stand with the four included M4 X L12 screws (50-inch model) or M4 X L16 screws (42-inch model).



### Installing a wall-mount bracket

- 1 If the stand is installed, remove the stand.
- 2 Install the base cover.
- 3 Attach the wall-mount bracket to the back of your TV using four M8 screws (Not Included)



### Warning

This apparatus is intended to be supported by a UL Listed wall mount bracket.

### Identifying cables

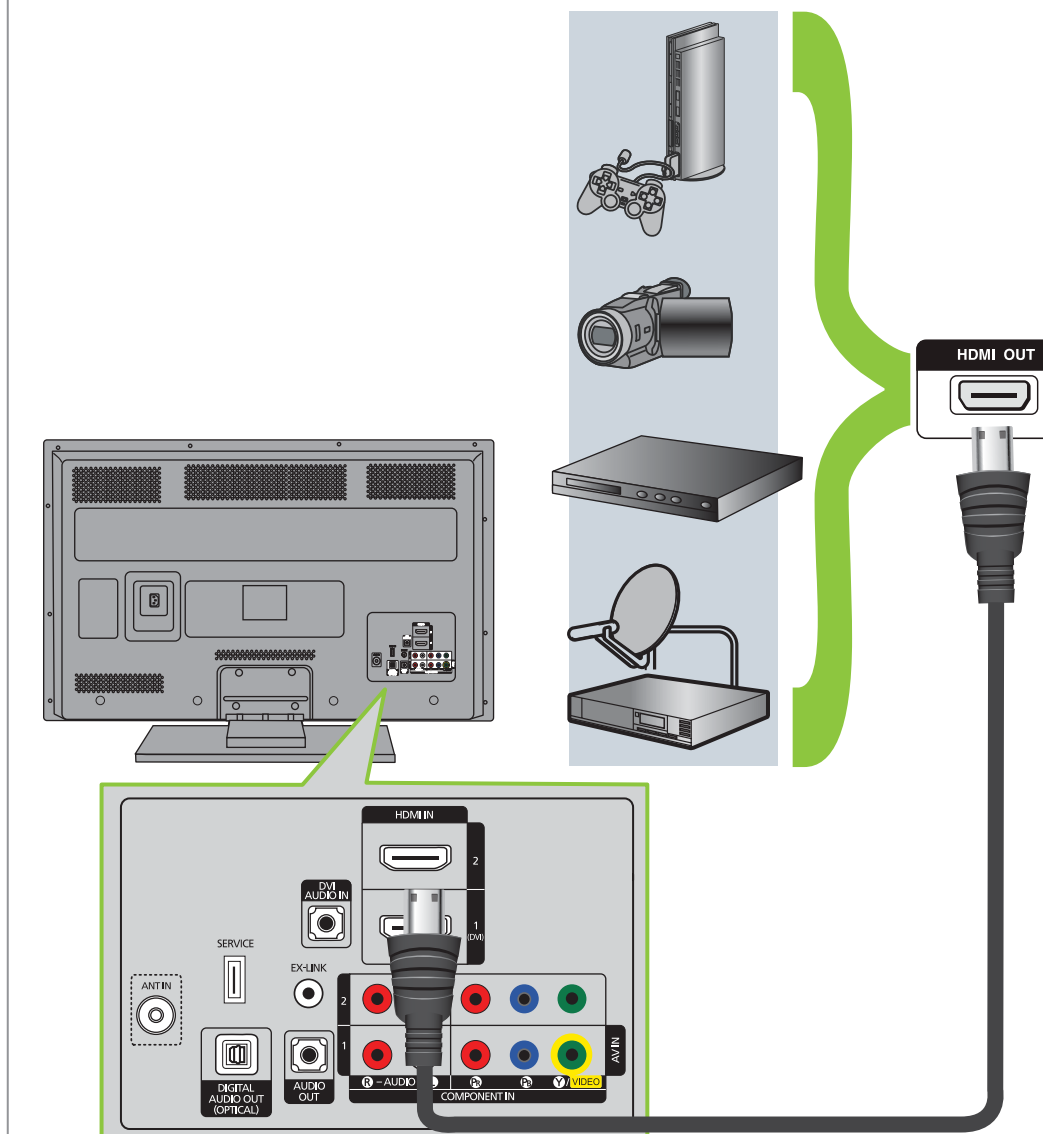
Your TV has several connection types for connecting devices. For the best video quality, connect a device to the best available connection.

Connection type	Video quality	Cable connector
HDMI video/audio	Best	OR
Component video and analog audio	Better	OR
Composite video and analog audio	Good	

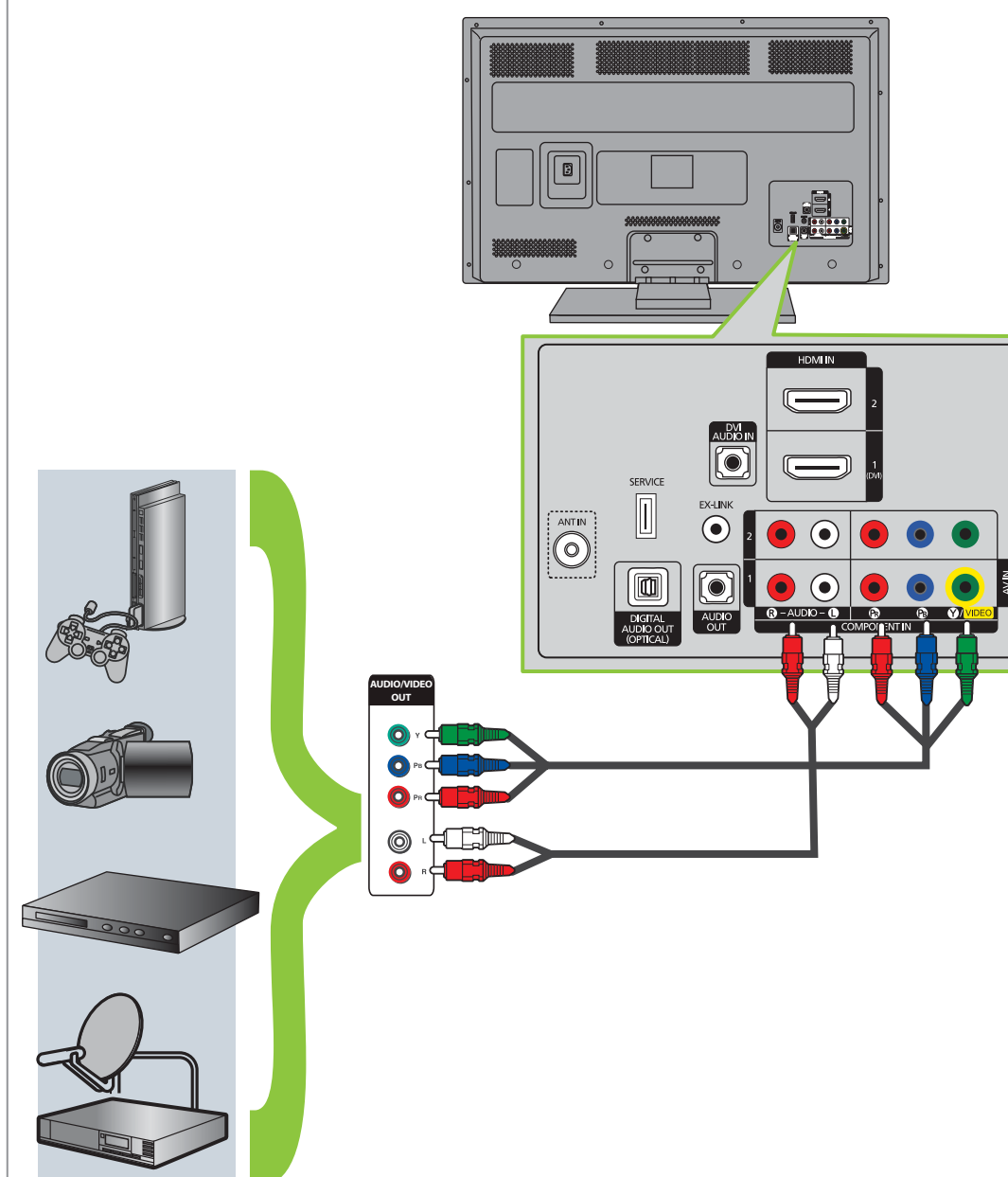
You can use the HDMI 1 jack to connect a DVI device to your TV. You need to attach an HDMI-to-DVI adapter to the end of the HDMI cable that connects to the DVI device's jack.

### Connecting a DVD or Blu-ray player, cable box, satellite receiver, camcorder, or game station

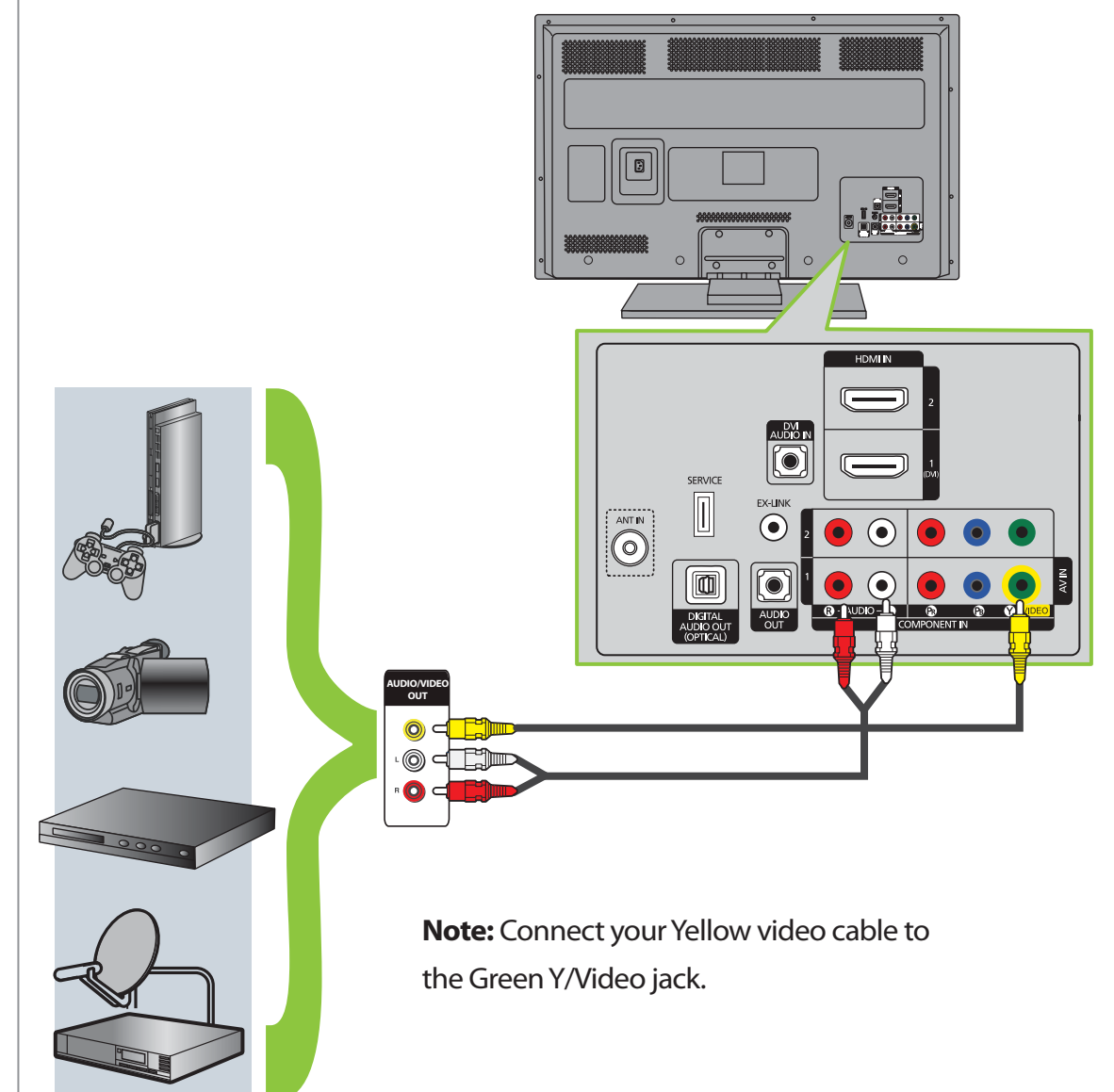
Using an HDMI cable (best)



### Using component cables (better)

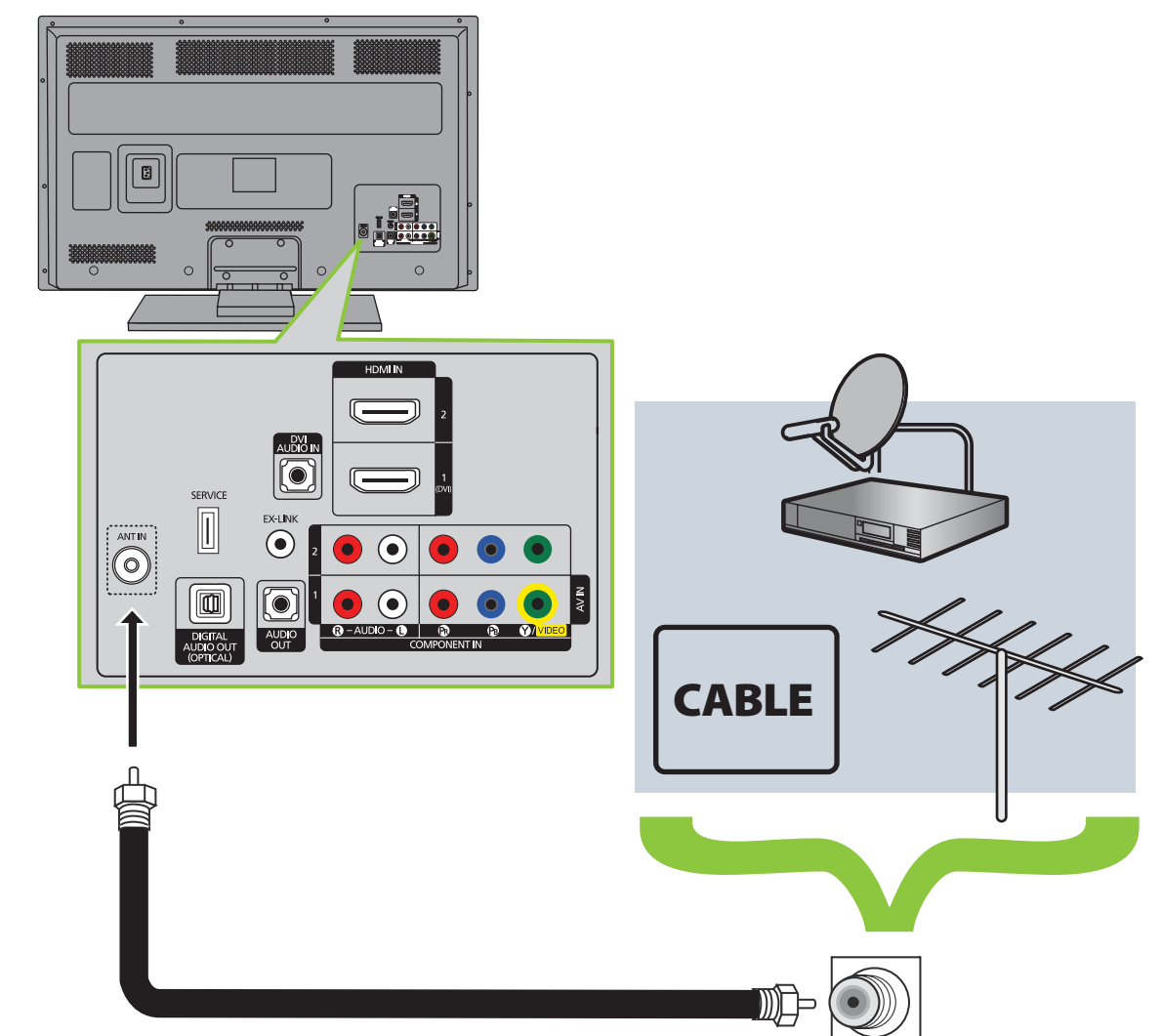


### Using composite cables (good)



**Note:** Connect your Yellow video cable to the Green Y/Video jack.

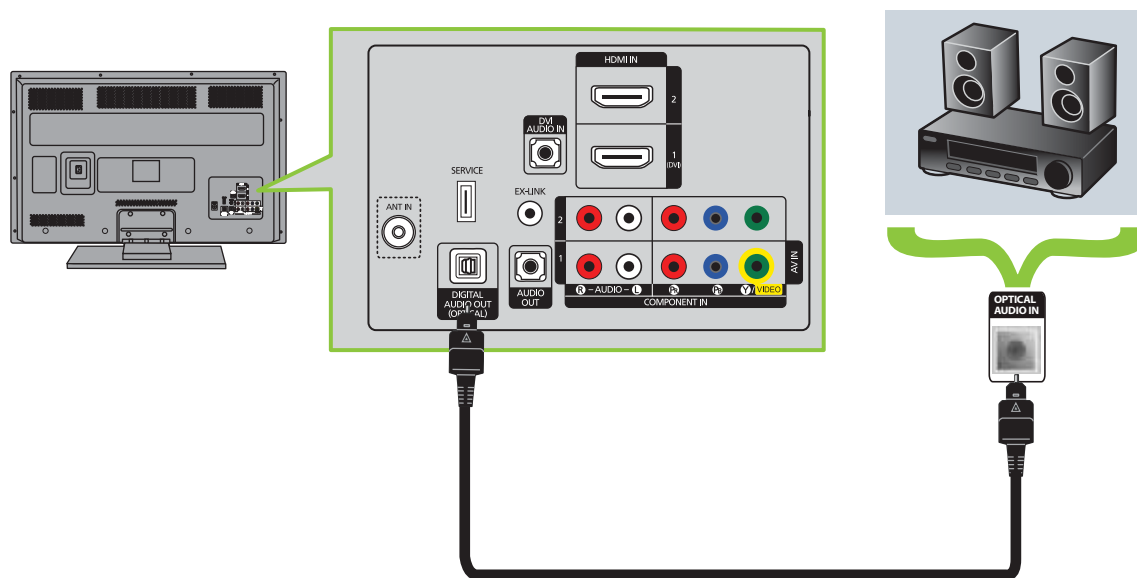
### Connecting an antenna/cable wall jack



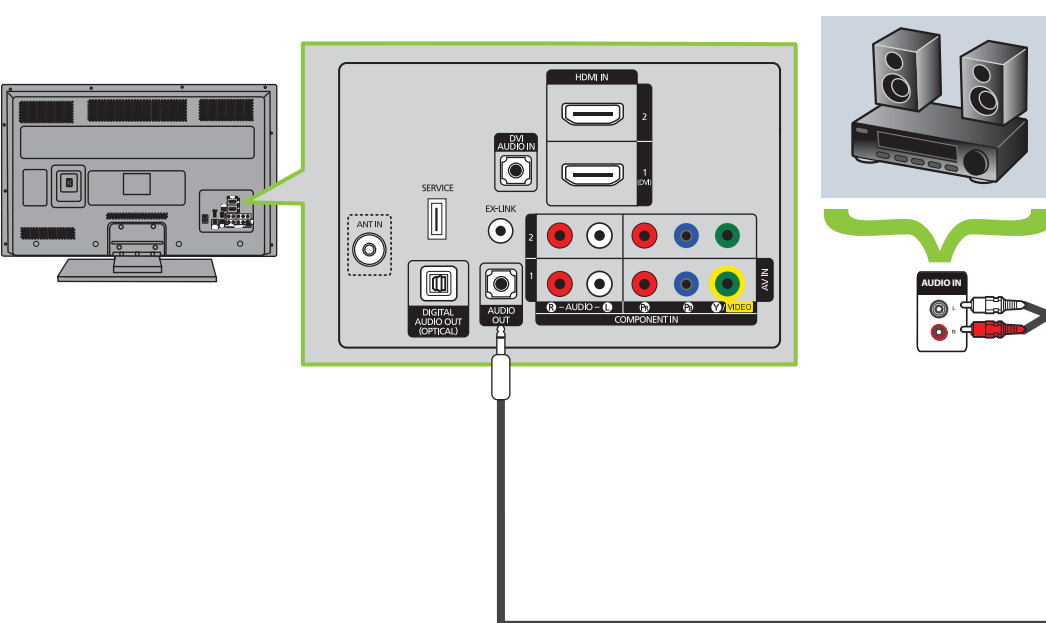


## Connecting a Home Theater System

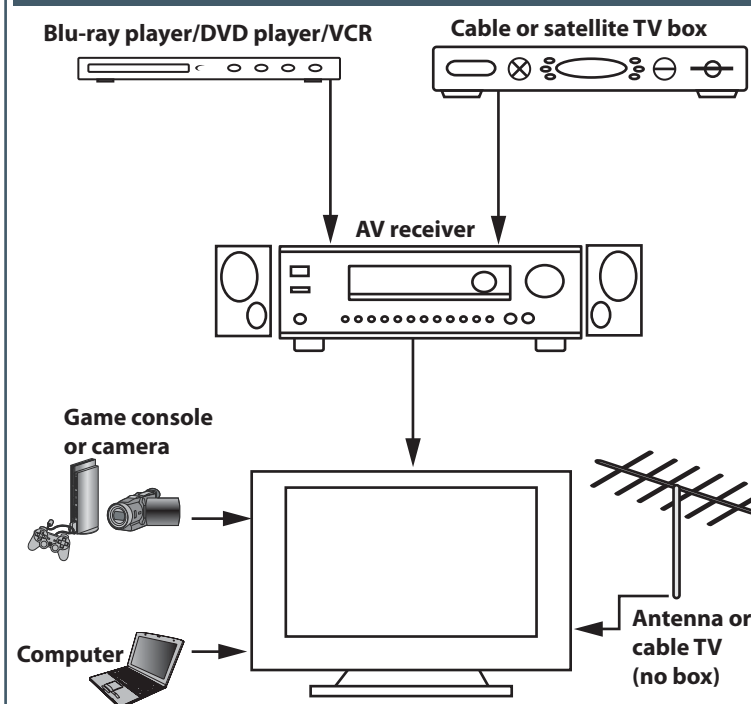
### Using Digital audio



### Using Analog audio



## Connecting a home theater system with multiple devices



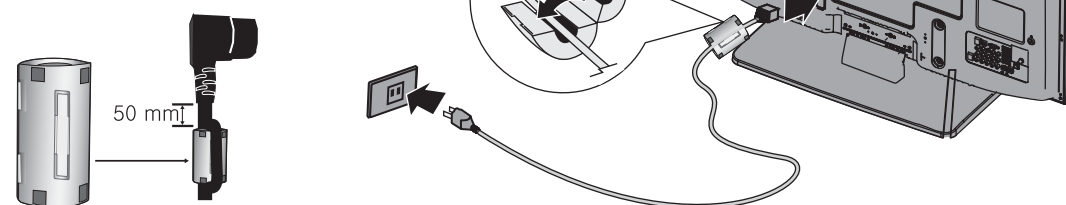
When connecting to an AV receiver with ARC function, we recommend that you connect the AV receiver's **HDMI OUT** jack to your TV's **HDMI2 (ARC)** jack by using an **HDMI-ARC** compliant cable.

In the following situations, the HDMI cable will route Dolby Digital audio to the AV receiver, so you do not need to connect a separate digital audio cable:

- Have a game console connected to one of your TV's **HDMI 1/HDMI3** jacks.
- When you watch a program through an antenna or cable TV connected to the **ANT/CABLE** jack.

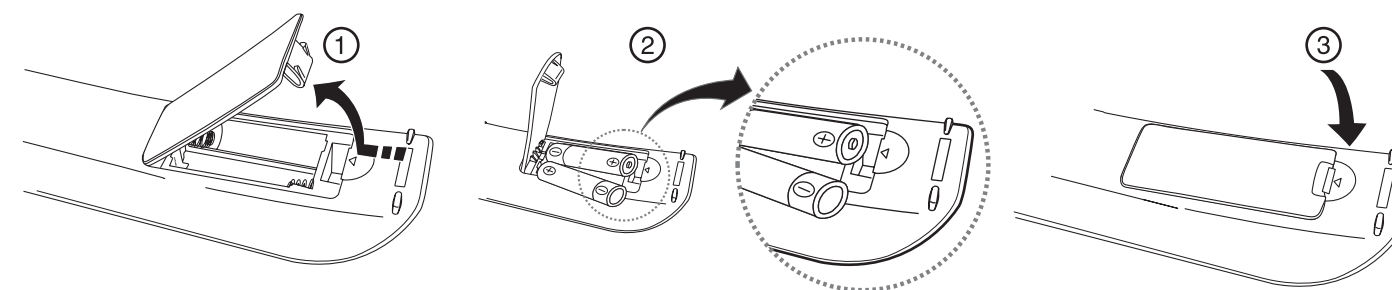
## Connecting power

- Lift up on the tabs on the ferrite core, insert the power cord into the slot, then close the core.
- Plug the AC power cord into the AC IN jack on the back of your TV.
- Plug the other end of the power cord into a power outlet.



## Setting up and using your remote control

- Press the battery cover latch in, then lift the cover.
- Insert two AAA batteries into the battery compartment. Make sure that the + and - symbols on the batteries match the + and - symbols in the battery compartment.
- Press down on the battery cover until it clicks into place.



Picture	Mode	: Standard
Sound	Contrast	: 95
	Brightness	: 45
Channel	Sharpness	: 50
Setup	Color	: 50
Input	Tint (G/R)	: G50/R50
	Picture Options	

### Aspect ratio options

- 16:9**—Sets the picture to the 16:9 aspect ratio.
- Zoom1**—Stretches the 16:9 aspect ratio picture vertically.
- Zoom2**—Stretches the Zoom1 picture vertically.
- Wide Fit**—Stretches the picture both horizontally and vertically to display the optimal picture.
- 4:3**—Sets the picture to the 4:3 aspect ratio.
- Screen Fit**—Displays the full native HD signal that cannot be viewed using a normal TV.

## Programming your remote control

To program your universal remote control to work with your new Insignia TV, see the table for common codes. If you have problems programming your remote or need a different remote control code, visit [www.insigniaproducts.com/remotecodes](http://www.insigniaproducts.com/remotecodes) for the latest remote control code information.

Universal remote TV codes												
Universal remote controls				Cable/Satellite/Set-top boxes								
One for All	Philips	RCA	Sony	Cablevision	Charter	Comcast	Cox	Direct TV	Dish Network	Time Warner	Tivo	Verizon
0054	0198, 0490	135	068, 069, 078, 096, 100, 164, 168, 229, 026	068, 069, 078, 096, 100, 164, 168, 229, 026	2002, 1204, 1423, 1517, 0171, 1963, 0463, 1463, 0842, 1326, 167, 415, 424, 450, 456, 461, 507, 523, 567, 577, 586	10171, 11204, 11326, 11463, 11517, 11641, 11780, 11785, 11892, 11963, 12002	1326, 1463	10171, 11204, 11326, 11517, 11564, 11641, 11963, 12002	720	400, 450, 461, 456, 10463, 1463, 0463	0091	0198, 0490

## Turning on your TV for the first time

- Make sure that you have:
  - Installed the remote control batteries.
  - Connected an antenna, cable TV, or satellite TV.
  - Connected the power cord.
- Press **POWER**. The **Plug & Play** menu opens.
- Press **ENTER** to access the menu, then press **▲** or **▼** to highlight a language. You can select **English, French, or Spanish**.
- Press **ENTER**. The **Select Home Use when installing this TV in your home** screen appears.
- Press **◀** or **▶** to highlight **Home Use**, then press **ENTER**. The **Select the Antenna source to memorize** screen appears.
- Press **▲** or **▼** to highlight your TV signal source, then press **ENTER**. You can select **Air** (antenna), **Cable** (cable TV), or **Auto** (both antenna and cable TV). If you have digital cable, select **Auto**.
  - If you select **Cable**, press **◀** or **▶**, **▲** or **▼** to highlight the cable TV signal type, then press **ENTER**. You can select **STD**, **HRC**, or **IRC** for analog (antenna-based or without a cable box) or digital signals. **STD** is the most common setting. If you do not know which type of cable TV signal you have, contact your cable TV provider.
- Press **ENTER**, then press **▲** or **▼** to highlight **Auto** (to automatically set the time using time information from a digital channel) or **Manual** (to manually set the time), then press **ENTER**. If you select **Auto**, the **Set to daylight saving time** screen appears.
  - Off**—Turns off the daylight saving time feature.
  - On**—Turns on the daylight saving time feature.
  - Auto**—Sets the daylight saving time feature based on the time information from a digital channel. If you select **Manual**, the **Set current date and time** screen appears. For instructions on how to manually set the time, see your User Guide.
- Press **ENTER**. The **Set the time zone** screen appears. Press **▲** or **▼** to highlight a time zone, then press **ENTER**. If you receive a digital channel signal, the time zone is selected automatically.



# INSIGNIA™

## Two-year limited warranty

See your *User Guide* or visit [www.insigniaproducts.com](http://www.insigniaproducts.com) for details.

## Need additional help?

See your *User Guide*! This comprehensive guide includes everything from basic how-to steps to more advanced features. Check out our **online community forum** at [www.insigniaproducts.com](http://www.insigniaproducts.com) for helpful information from other Insignia TV owners.

## We're here for you

[www.insigniaproducts.com](http://www.insigniaproducts.com)

For customer service, call:

**877-467-4289 (U.S./Canada markets)**

Distributed by Best Buy Purchasing, LLC  
7601 Penn Avenue South, Richfield, MN USA  
55423-3645

© 2011 BBY Solutions, Inc.

All rights reserved. INSIGNIA is a trademark of BBY Solutions, Inc. Registered in some countries. All other products and brand names are trademarks of their respective owners.

## WE ARE GOING GREEN!

A copy of your *User Guide* is not provided in the box but is available online. Go to [www.insigniaproducts.com](http://www.insigniaproducts.com), click **Support & Service**, enter your model number in the **Product Search** field, then click **Search**.

