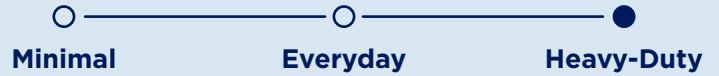




SUITABLE COOKING STYLE & FEATURES:



800 CFM

POWERFUL SUCTION

6 SPEED SETTING

TOUCH SCREEN PANEL

DELAY AUTO SHUT-OFF

RECIRCULATING OPERATION

POWER CONTROL TECHNOLOGY

IS-710
CONTEMPORARY STYLE ISLAND
SIZES: 30" | 36"

PRODUCT DESCRIPTION



Upgrade your kitchen with a sleek stainless-steel island hood built for power, style, and everyday usability. The IS-710 delivers bright cooktop lighting, ultra-quiet ventilation, and easy cleaning (perfect for home chefs who want performance without the hassle). Four ultra-bright bulbs illuminate every dish, while six fan speeds quickly clear smoke, steam, and odors. Whisper-quiet operation keeps your kitchen calm, and dishwasher-safe stainless steel baffle filters make cleanup effortless.

FEATURES & BENEFITS:

POWER CONTROL TECHNOLOGY™: Customizable airflow allows you to operate the hood at 400 CFM and meet local code requirements.

SLEEK CONTEMPORARY CANOPY DESIGN: This workhorse of a range hood won't take away from your kitchen's look. Its full stainless steel finish elevates your kitchen aesthetic and matches other existing appliances. Fits to 10.5-ft. tall ceilings with additional chimney extension.

HEAVY-DUTY COOKING: For home chefs who love to explore new techniques and need appliances that can keep up. This range hood has powerful suction with 6-speeds and can handle all of your heavy-duty cooking needs such as boiling, steaming, poaching, braising, frying, searing, and sauteing.

WHAT'S INCLUDED

Dishwasher-Safe Baffle Filters (3) for 30" Model | (3) for 36" Model, Top 6" Round Exhaust Adapter (1), Ceiling Mounting Bracket (1), Grease Cup (1), Upper L-Bracket (4), Lower L-Bracket (4), Microfiber Cloth (1), Aluminum Foil Tape (1), Lower Chimney Cover (2), Upper Chimney Cover (2) and 6" Flexible Duct Tube (1)

OVERALL PRODUCT DIMENSIONS (WxDxH)

IS-710SS 30: 29 3/4" x 23 5/8" x 24 3/4" - 45 3/4"
 IS-710SS 36: 35 1/4" x 23 5/8" x 24 3/4" - 45 3/4"

WARRANTY

2-Year Limited Warranty and Lifetime Warranty on Motor



REMOTE & DUAL TOUCH CONTROL:

Control panels on the front and back let you control your range hood from either side of the island. Remote control allows you to control your range from anywhere in the home. ADA compliant (Remote sold separately).

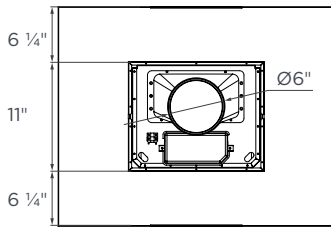
ENERGY SAVING LED:

Four bright, efficient LED lights to illuminate all of your cooking needs without creating extra heat over the stove.

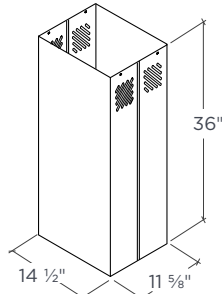
EASILY CONVERT TO DUCTLESS:

This versatile cooker hood fits a 6" round duct and works in a ductless kitchen! Simply combine it with our effective charcoal filters (CFI012, sold separately). Charcoal filters trap grease particles and use activated charcoal to purify the air and deodorize cooking smells.

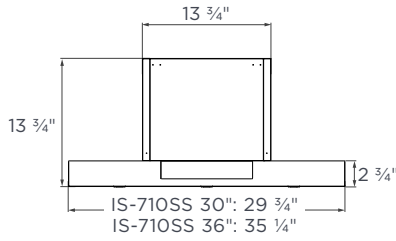
TECHNICAL DRAWING



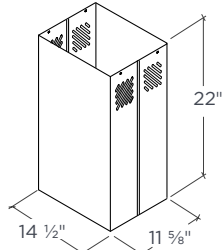
TOP



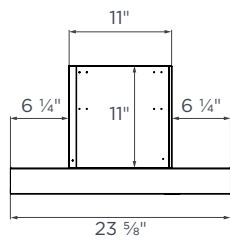
CHIMNEY EXTENSION
(CHE020, SOLD SEPARATELY*)



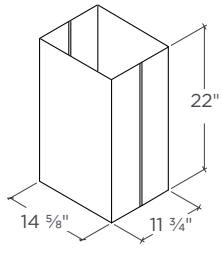
FRONT



UPPER CHIMNEY COVER

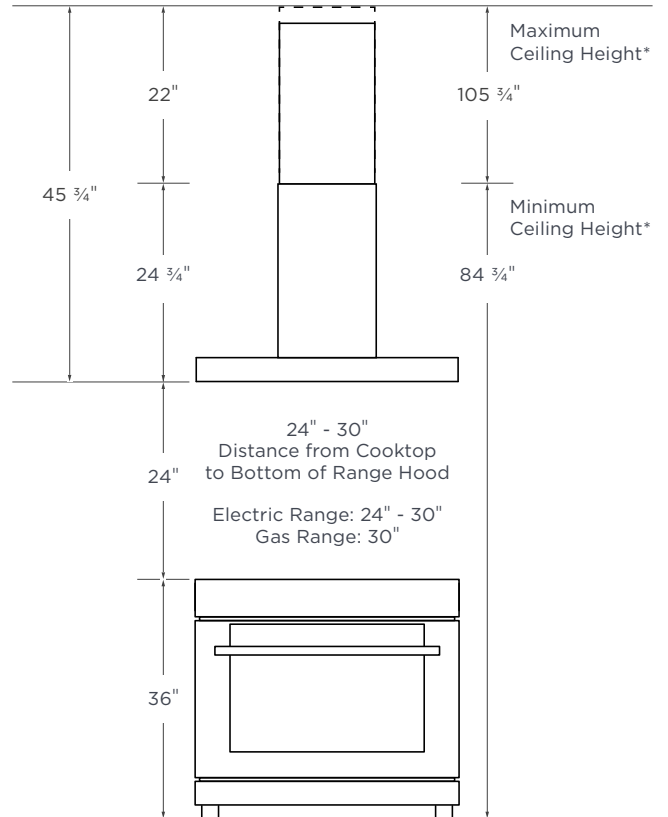


SIDE



LOWER CHIMNEY COVER

CEILING HEIGHT GUIDE



*This height range represents the standard maximum and minimum heights. Additional extension (CHE020) requires a separate purchase.

SPECIFICATIONS

SIZE	30" 36"
STYLE	Island
RECIRCULATING	Yes (Charcoal Filters Required)
CLEANING FUNCTION	N/A
NOISE LEVEL	2.0 to 6.0 Sones
LIGHT COLOR TEMP.	Warm / 3500 Kelvin
LUMENS	110
LIGHT BULB	2W LED (LTG010)
LIGHT INTENSITY	1 Levels
DELAY FUNCTION	Yes
CONTROL	Touch Panel
SPEED SELECTIONS	6 Levels
SPECIAL FEATURES	Dual Control / Dishwasher-Safe Baffle Filters

COOKING STYLE	Heavy-Duty
EQUIVALENT AIRFLOW	800 CFM
LABORATORY AIRFLOW	450 CFM
TOP VENTING	6" Round
REAR VENTING	N/A
MOTOR	Single
AMPERAGE	1.6
WATTAGE	192
VOLTAGE	120
CONNECTION	Plug-In
GROSS WEIGHT, LBS.	30": 67 36": 71
NET WEIGHT, LBS.	30": 58 36": 59
DIMENSIONS (WxDxH)	30": 29 3/4" x 23 5/8" x 24 3/4" - 45 3/4" 36": 35 1/2" x 23 5/8" x 24 3/4" - 45 3/4"