



QUICK SETUP GUIDE

Glass Screen Protector For Nintendo® Switch™ 2 NX-NS2SP2

PACKAGE CONTENTS

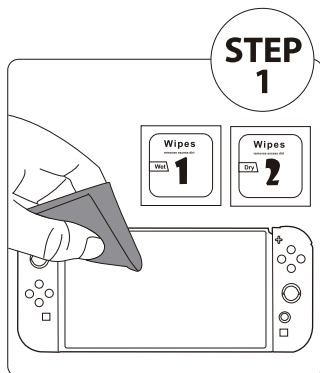
- Glass screen protector x2
- Wet and dry wipes x2
- Guide sticker x2
- Dust-absorber x2
- Squeeze card x2
- Cleaning cloth x2
- Quick setup guide

PLEASE READ - IMPORTANT

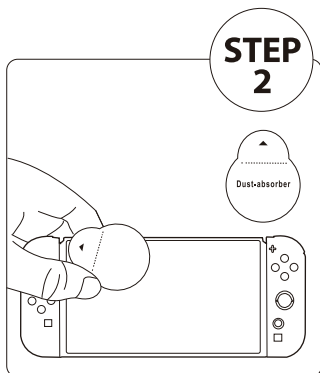
There is a small raised frame around the Switch 2 screen. When aligning the screen protector, make sure that the screen protector is inside that frame and not on top of it otherwise the screen protector won't adhere to the Switch 2 screen which may result in an air bubble being present.

Before using your new product, please read these instructions to prevent any damage.

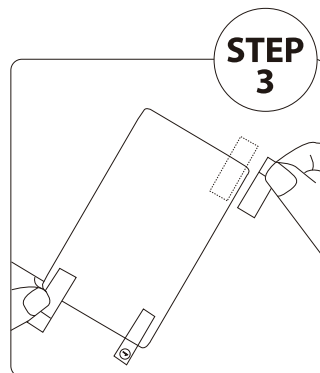
ATTACHING YOUR SCREEN PROTECTOR



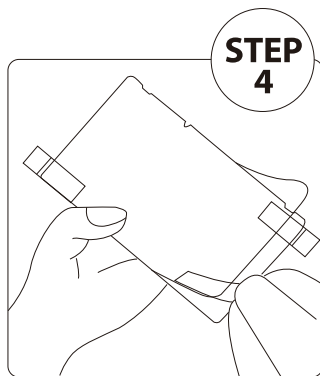
Clean the screen with provided wet / dry wipes and cloth.



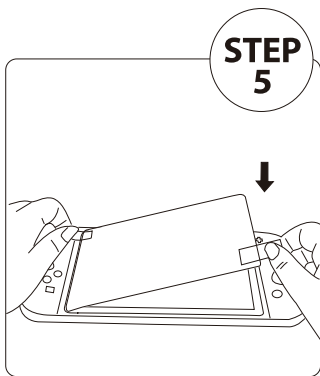
Clean the dust on the screen using dust-absorber sticker.



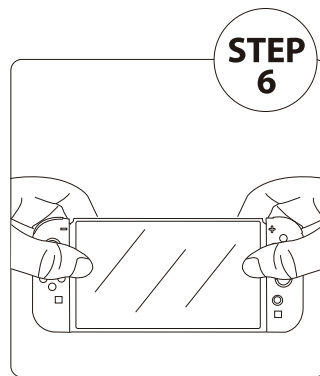
Stick two guide stickers on lower left and upper right of screen protector respectively.



Peel off the film on the back of screen protector.



Line up the screen protector with the outer frame of the screen using the two guide stickers and apply the adhesive side down.



Gently press down the screen protector and remove all bubbles by using the squeeze card. Finally, remove guide stickers.