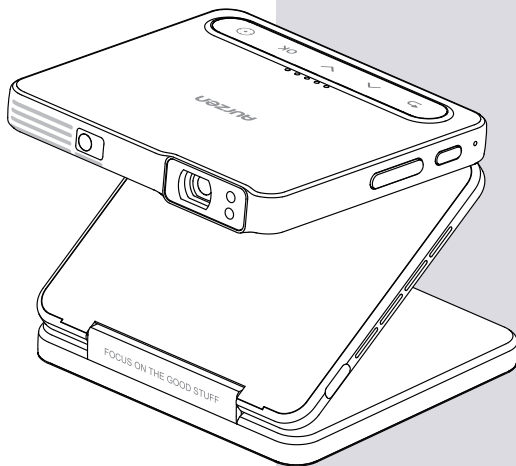


# Aurzen

ZIP Tri-Fold  
Ultra Portable  
Projector



**./ ZIP USER MANUAL**

# CONTENTS

TROUBLESHOOTING GUIDE .....	01
IN THE BOX .....	02
PRODUCT OVERVIEW .....	03
QUICK START .....	04
1. Before Use .....	04
2. Power On/Off .....	06
3. Image Adjustment .....	06
SCREEN MIRRORING .....	07
For iOS Devices .....	08
For Android Devices .....	09
For Mac .....	09
For Windows .....	10
BT CONNECTION .....	11
PROJECTION DISTANCE AND SIZE .....	12
SPECIFICATIONS .....	12

# TROUBLESHOOTING GUIDE

## 1. The copyrighted content from Hulu, Netflix, and similar services can not be mirrored or cast.

- \* Copyrighted content from Netflix, Hulu, Disney+, or other similar streaming services CANNOT be wirelessly mirrored or cast due to copyright restrictions.

## 2. Blurry image

- \* Adjust the focus of the projector.
- \* Make sure the projection distance is in the effective focal range of the projector.
- \* Remove the dust or dirt from the lens with a soft cloth or soft-bristled brush.

## 3. Non-rectangular image

- \* Use the keystone correction function to adjust the image shape. Please note that this projector only supports vertical keystone correction.

## 4. Auto focus failure

- \* Make sure the ToF camera of the projector is not blocked.
- \* Move the projector back and forth until it is within the effective auto-focus range.

## 5. Auto keystone correction failure

- \* Make sure the ToF camera of the projector is not blocked.
- \* Make sure the projector is aligned horizontally with the projection surface as it only supports vertical keystone correction.

## 6. Factory reset

- \* On the projector's homepage, open the side menu by pressing the **OK** button on the projector, and then select **Common Settings** > **Factory Reset** to restore the projector to the default settings.

## 7. Connect to BT devices

- ① Ensure your BT device is ready for a connection.
- ② On the projector's homepage, open the side menu by pressing the **OK** button on the projector, and then select **BT**. Enable BT, search for your device and pair it.

## 8. Change language

- \* On the projector's homepage, open the side menu by pressing the **OK** button on the projector. Select **Common Settings** > **Languages** and choose your desired language.

## 9. Others

- \* Feel free to contact us at [support@aurzen.com](mailto:support@aurzen.com).

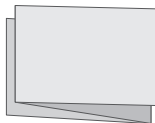
# IN THE BOX



Projector

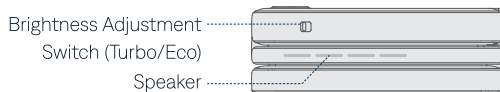
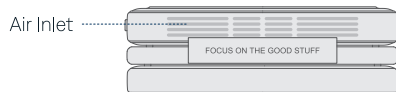
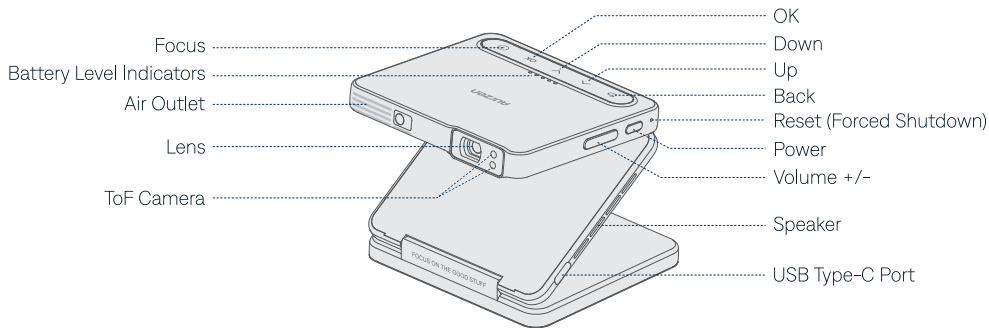


USB-C Charging Cable



User Manual

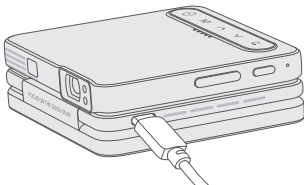
# PRODUCT OVERVIEW



# QUICK START

## 1. Before Use

- 1 Connect the projector to a power supply using the provided charging cable. Once fully charged, you can keep it connected or unplug it.

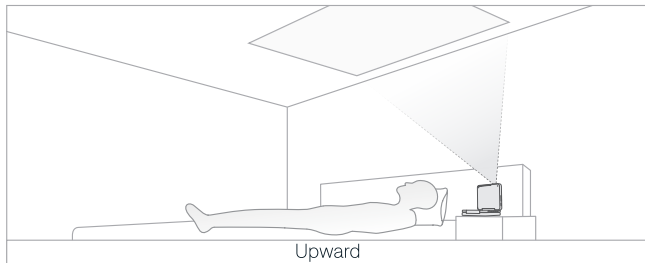
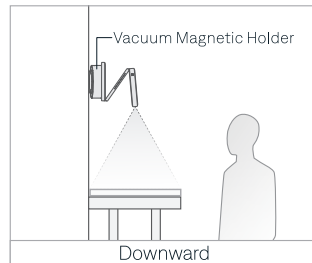
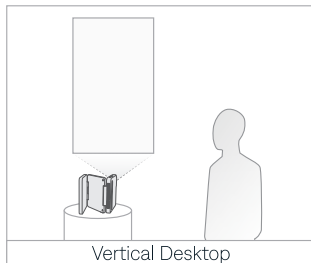
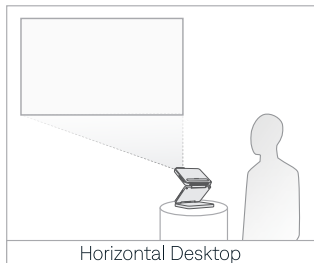


- **Charging:** Blinking white light.
- **Fast charging (12V/2A or higher power supply):** Blinking white light with a solid green light.
- **Fully charged:** All indicator lights remain solid.

### Notes:

- \* When the projector is turned on, it needs a 12V/2A or higher power supply to charge. When off, a lower power supply can be used.
- \* More white lights mean a higher battery level. Charge the projector in time when the battery is low.

- 2 Unfold the projector to your desired angle and place it on your desired surface. The projected image will automatically flip based on how the projector is positioned.

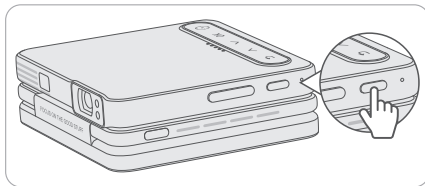


**⚠ Note:**

Do Not Overextend! Do not attempt to fully flatten ZIP, as exceeding the 90° hinge limit or forcing it into a flat position may result in irreversible damage.

## 2. Power On/Off

Press and hold the **Power Button** for 5 seconds to turn on the projector; press and hold it for 3 seconds to turn it off.

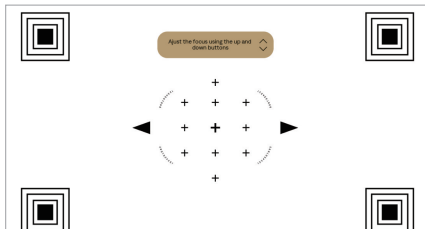


## 3. Image Adjustment

### Focus

**Auto Focus:** The projector will automatically adjust the focus when it detects shaking or movement. You can also press the **Focus** button on the projector to activate Auto Focus. If it doesn't activate immediately, press the button repeatedly until the image is clear.

**Manual Focus:** On the homepage, open the side menu by pressing the **OK** button on the projector. Select **Common Settings > Manual Focus**, and follow the on-screen instructions to adjust the focus until the image is clear.





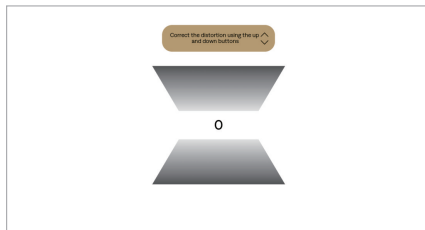
## Keystone Correction

### Tip:

ZIP only supports  $\pm 25^\circ$  vertical keystone correction.

**Auto Keystone Correction:** The projector automatically corrects the vertical keystone distortion when it detects movement.

**Manual Keystone Correction:** On the homepage, open the side menu by pressing the **OK** button on the projector. Select **Common Settings** > **Keystone Correction** > **Manual Keystone**, and follow the on-screen instructions to correct the vertical distortion.



## SCREEN MIRRORING

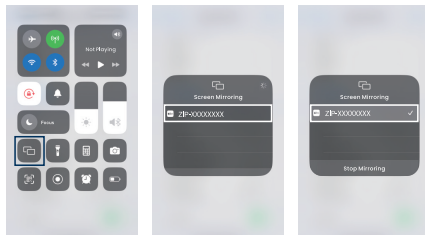
### Important Note:

Copyrighted content from Netflix, Hulu, Disney+, or other similar streaming services **CANNOT** be wirelessly mirrored or cast due to copyright restrictions.

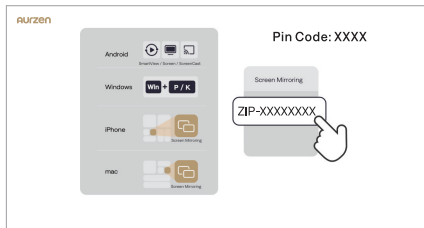
## For iOS Devices

- 1 Turn on WiFi on your iOS device (a successful WiFi connection is not required).

- 2 Ensure the projector is on its homepage. Open the **Control Center** on your iOS device and select **Screen Mirroring** or **AirPlay Mirroring**. Select **ZIP-XXXXXXX** from the search list to connect.



- 3 A code will appear on the projector's screen. Enter the code on your iOS device. Once connected, the content from your iOS device will be mirrored onto the screen/wall.

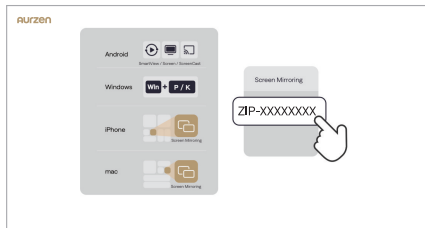


## For Android Devices

Ensure your Android device supports Multi-screen, Smart View, or Wireless Display (names may vary by device).

- 1 Turn on WiFi on your Android device (a successful WiFi connection is not required).
- 2 Ensure the projector is on its homepage. Activate the **Multi-screen/Smart View/Wireless Display** function on your Android device and search for the projector.

- 3 Select **ZIP-XXXXXXX** from the search list to connect.  
Once connected, the content from your Android device will be mirrored onto the screen/wall.

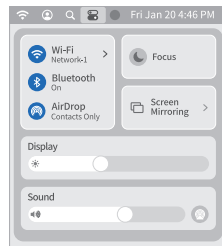


## For Mac

Ensure your Mac supports the **Screen Mirroring** feature.

- 1 Turn on WiFi on your Mac (a successful connection is not required).

- 2 Ensure the projector is on its homepage. On your Mac, click **Control Center**  in the upper right corner and select **Screen Mirroring**  .



- 3 Select **ZIP-XXXXXXX** from the search list to connect. Once connected, the content from your Mac will be mirrored onto the screen/wall.

## For Windows

Ensure your Windows device supports the **cast** feature.

- 1 Turn on WiFi on your Windows device (a successful WiFi connection is not required).
- 2 Ensure the projector is on its homepage. Press the "**Windows Logo + K**" key combination on your keyboard to enter the **Cast** interface.

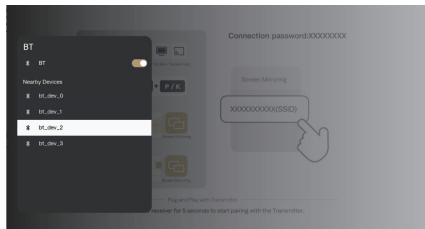
- ③ Select **ZIP-XXXXXXX** from the search list to connect. Then select **Duplicate**. Once connected, the content from your Windows device will be mirrored onto the screen/wall.



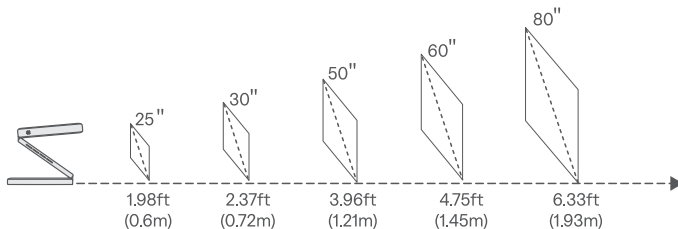
## BT CONNECTION

You can connect a BT speaker or headphones to the projector via BT.

- ① Turn on your BT device and make it ready for a BT connection.
- ② When the projector is on the homepage, open the side menu by pressing the **OK** button on the projector, and then select **BT**. Press **OK** to enable the function. Select your BT device from the list and pair it with the projector.



## PROJECTION DISTANCE AND SIZE



- \* The projection distance may vary depending on the content. Adjust the distance between the projector and the projection surface as needed for optimal viewing.
- \* Ambient darkness will improve the clarity of the projected images.

## SPECIFICATIONS

Display Technology	DLP	Light Source	LED
Resolution	1280 x 720P	Brightness	100 ANSI Lumens

<b>Installation Type</b>	Horizontal Desktop/ Vertical Desktop/Downward/Upward	<b>Aspect Ratio</b>	16:9
<b>Focus</b>	Auto & Electric/Manual	<b>Keystone</b>	±25° Vertical Keystone Correction: Auto & Electric/ Manual
<b>Speaker</b>	1W x 2	<b>Power Supply</b>	Input (When Off): 15V $\overline{=}$ 2A, 12V $\overline{=}$ 2A, 9V $\overline{=}$ 2A, 5V $\overline{=}$ 2A Input (When On): 15V $\overline{=}$ 2A, 12V $\overline{=}$ 2A
<b>Unit Dimensions</b>	3.31 x 3.07 x 1.02 inches (84 x 78 x 26 mm)	<b>Unit Net Weight</b>	0.62lbs (280g)

## FCC Statement

Any Changes or modifications not expressly approved by the party responsible for compliance could void the user's authority to operate the equipment.

This device complies with part 15 of the FCC Rules. Operation is subject to the following two conditions:

- (1) This device may not cause harmful interference, and
- (2) this device must accept any interference received, including interference that may cause undesired operation.

NOTE: This equipment has been tested and found to comply with the limits for a Class B digital device, pursuant to part 15 of the FCC Rules. These limits are designed to provide reasonable protection against harmful interference in a residential installation. This equipment generates, uses and can radiate radio frequency energy and, if not installed and used in accordance with the instructions, may cause harmful interference to radio communications.

However, there is no guarantee that interference will not occur in a particular installation. If this equipment does cause harmful interference to radio or television reception, which can be determined by turning the equipment off and on, the user is encouraged to try to correct the interference by one or more of the following measures:

- Reorient or relocate the receiving antenna.
- Increase the separation between the equipment and receiver.
- Connect the equipment into an outlet on a circuit different from that to which the receiver is connected.
- Consult the dealer or an experienced radio/TV technician for help.

This equipment complies with FCC radiation exposure limits set forth for an uncontrolled environment.

This equipment should be installed and operated with minimum distance 20cm between the radiator & your body.

This transmitter must not be co-located or operating in conjunction with any other antenna or transmitter.

## ISED Warning

This device complies with Industry Canada licence-exempt RSS standard(s). Operation is subject to the following two conditions:

- (1) this device may not cause interference, and
- (2) this device must accept any interference, including interference that may cause undesired operation of the device.

Le présent appareil est conforme aux CNR d'Industrie Canada applicables aux appareils radio exempts de licence.

L'exploitation est autorisée aux deux conditions suivantes:

- (1) l'appareil ne doit pas produire de brouillage, et



(2) l'utilisateur de l'appareil doit accepter tout brouillage radioélectrique subi, même si le brouillage est susceptible d'en compromettre le fonctionnement.

The device is compliance with RF exposure guidelines, users can obtain Canadian information on RF exposure and compliance. The minimum distance from body to use the device is 20cm.

L'appareil est conforme aux directives d'exposition aux RF, les utilisateurs peuvent obtenir des informations canadiennes sur l'exposition aux RF et la conformité.

La distance minimale du corps pour utiliser l'appareil est de 20cm.

This transmitter must not be co-located or operating in conjunction with any other antenna or transmitter. Cet émetteur ne doit pas être colocalisé ou fonctionner en conjonction avec une autre antenne ou un autre émetteur.

Operation of this device in the band 5150-5250 MHz is restricted to indoor use only.

Le fonctionnement de cet appareil dans la bande 5150-5250 MHz est limité à une utilisation en intérieur uniquement.

	Frequency Range	Transmit Power (EIRP)
2.4G	2.4-2.4835GHz	≤ 20dBm (For CE)
5G	5.150-5.825GHz	≤ 20dBm (For CE)



RECYCLING

This product bears the selective sorting symbol for Waste electrical and electronic equipment (WEEE). This means that this product must be handled pursuant to European directive 2012/19/EU in order to be recycled or dismantled to minimize its impact on the environment.

User has the choice to give his product to a competent recycling organization or to the retailer when he buys a new electrical or electronic equipment.



The symbol indicates class II equipment



The symbol indicates AC voltage



The symbol indicates DC voltage



For indoor use only



The exclamation point within an equilateral triangle is intended to alert the user to the presence of important operating and maintenance (servicing) instructions in the literature accompanying the appliance.

The mains plug is used as the disconnect device. The socket-outlet shall be installed near the equipment and shall be easily accessible.

EU Compliance Statement: Shenzhen Neutop Optoelectronics Co., Ltd. hereby declares that this device is in compliance with the essential requirements and other relevant provisions of the Directive 2014/53/EU.

The full test of the EU declaration of conformity is available at the following internet address:

[https://aurzen.s3.us-west-1.amazonaws.com/resource/doc/Zip\\_Declaration\\_of\\_Conformity.pdf](https://aurzen.s3.us-west-1.amazonaws.com/resource/doc/Zip_Declaration_of_Conformity.pdf)

Operations in the 5.15–5.35GHz band are restricted to indoor usage only in following Countries:



AT	BE	CY	CZ	DK	EE	FL
FR	DE	EL	HU	IE	IT	LV
LT	LU	MT	NL	PL	PT	SK
SI	ES	SE	UK	BG	RO	HR



# CONTACT US



## Email

North America/United Kingdom: [support@aurzen.com](mailto:support@aurzen.com)  
Europe: [support.eu@aurzen.com](mailto:support.eu@aurzen.com)  
日本: [support.jp@aurzen.com](mailto:support.jp@aurzen.com)



## Phone

+1-667-218-4830 (Mon-Fri, 9:00 to 17:00 EST)

\*If you need assistance outside these hours, please email us for assistance.