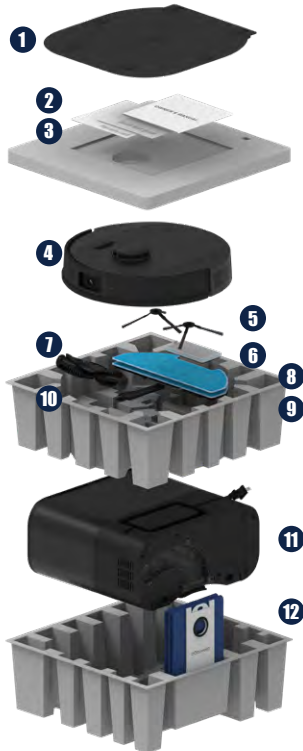


QUICK START GUIDE

Box Contents



- 1 Charging Bed
- 2 Owner's Manual
- 3 Warranty Card
- 4 UltraVision Pet™
- 5 Side Brush (2)
- 6 Filter
- 7 Bristled Main Brush
- 8 Microfiber Mop (2)
- 9 Mop Attachment
- 10 Cleaning Tool
- 11 Charging Station
- 12 Dust Bag

Getting Started



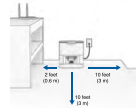
Scan for a step-by-step Video Guide.

1 Prepare the Charging Station

Mount the charging station over the charging bed sockets.



Place the charging station on a hard, flat surface, away from edges & stairs, with plenty of space. Plug it in.



2 Prepare UltraVision Pet for his first clean

Remove the protective pieces from UltraVision Pet, his bumper, and charging station.



Place the side brush over the socket and press down firmly until it clicks into its locked position. You should feel two snaps; as it locks into place.



Press and hold the GO button until the screen lights up.



Press the CHARGE button on UltraVision Pet to send him to his charging station.



To charge UltraVision manually, carefully align the metal nodes on UltraVision's back against the charging plates on the station.



bObsweep App



Scan for a step-by-step Video Guide.

1 Prepare for Wi-Fi Connection

Connect your phone to a 2.4GHz Wi-Fi network, and:

Turn on:
- Bluetooth
- Location Services

Turn off:
- Wi-Fi Calling

Bring UltraVision, your mobile phone, and your home's router/modem close to each other.

- ✓ Network: 2.4GHz
- ✓ Bluetooth: ON
- ✓ Location: ON
- ✓ Wi-Fi Calling: OFF



2 Connect UltraVision Pet to Wi-Fi

Download the bObsweep app on the Google Play store or the App Store.



Create your account and log in to the bObsweep app.



If you are going to use Alexa voice controlling, enable the bObsweep skill on the Alexa app.



Open the bObsweep app, Add Model, and select 'UltraVision Pet' on the models list.



Follow the step by step instructions on the bObsweep app to connect UltraVision Pet to Wi-Fi.

If prompted, give the bObsweep app access to your location, "Allow While Using App", and, "Allow bObsweep to find nearby devices", "Allow local network permission".

Quick Tips



Scan for a step-by-step Video Guide.

* Self-emptying

By default, every time UltraVision docks, a short but loud vacuuming process empties his bin into the dust bag.



Adjust the self-emptying frequency in the app, keeping in mind that if the dustbin becomes too full, its contents may not be emptied properly. If you haven't vacuumed recently, set more frequent self-empties to prevent the bin from getting too packed, ensuring proper airflow.



Scan for a step-by-step Video Guide.

* Mapping

UltraVision Pet constantly updates his map while he cleans ("Active Map").

You can save the map. UltraVision can store up to 3 saved maps for 3 different floors or environments.

Tap on any saved map to make it the active map for UltraVision to use.

Before taking UltraVision to a new floor:

- Save the map of the current floor.
- Delete the "Active Map" so UltraVision can create a new map for the new floor.
- Save the map of the new floor.

If UltraVision doesn't cover the entire floor in one charge, go to Settings and enable Auto-Resume. UltraVision will resume where he left off after charging.

Scan for more how-to videos and instruction guides:



bobsweep.com/ultravision-pet-support