

ROKU®

Select Series
4K HDR TV

Quick Start Guide



Need help?



Setup
videos



Common
questions



Tips and
tricks

Visit go.roku.com/TV



Message & data rates may apply.



© 2022 Roku, Inc. All Rights Reserved. Roku, the Roku logo, and the purple d-pad and purple fabric tag designs are trademarks or registered trademarks of Roku, Inc.

4100000916_02

What's included



Roku Select Series 4K TV



43"/50"/55"/75"
model x 4 screws

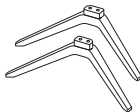


65" model x 6 screws

Stand screws



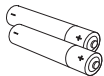
Power cable
for 75" model
only



TV stands



Roku Enhanced
Voice Remote

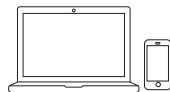


AA batteries
x 2

What you need



Phillips head
screwdriver

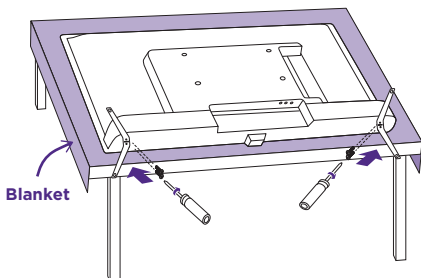


Laptop or mobile
phone for activation



Internet connection

STEP 1: Set up your TV



A Prepare a surface

Put a soft covering like a blanket down onto a clean, flat surface (make sure it's larger than the TV) and place the TV on it.

B Attach the stands

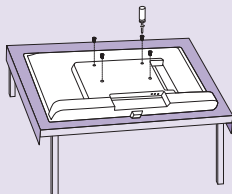
Use a screwdriver and included screws to attach the stands.

C Set TV upright

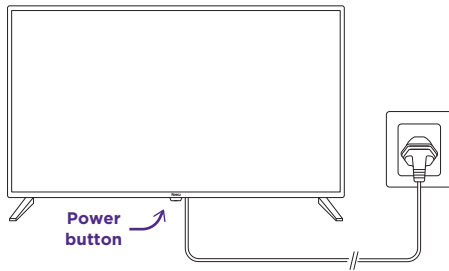
Place your TV on a stable, flat surface.

Mounting your TV?

For instructions, skip these steps and visit go.roku.com/TV

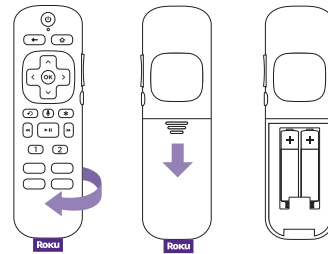


STEP 2: Plug TV in and pair remote



A Connect your TV

Plug your TV into a power outlet. It should turn on automatically. If it doesn't, press the power button.



B Insert batteries

Slide open the cover on the back of your remote and insert the included batteries. Your remote will pair automatically.

Get to know your TV

Video connections

HDMI - Game consoles, DVD players

Composite - Analog devices, older game consoles

Antenna/Cable - Digital antenna, cable connection

Audio connections

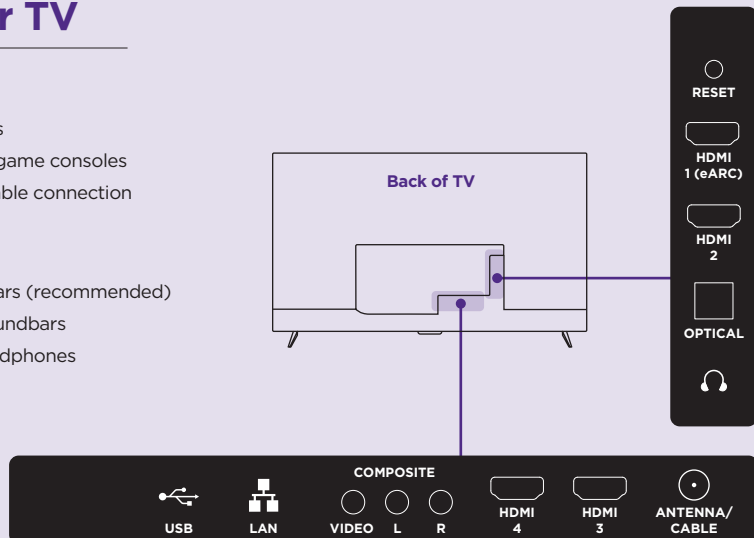
HDMI eARC - AV receivers, soundbars (recommended)

Optical (S/PDIF) - AV receivers, soundbars

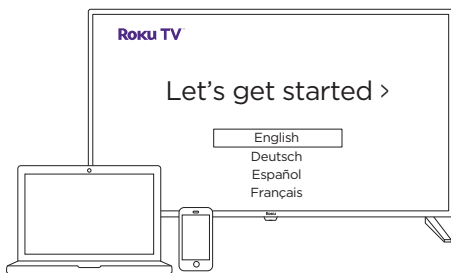
Audio Out/Headphone - Wired headphones

Other connections

USB - Flash drive



STEP 3: Activate your TV



Connect to internet

Follow the instructions on your TV screen. Activate your TV by using your computer or smartphone to link a Roku account.



IMPORTANT

Roku never charges for activation support.

Need help?

For help with setup, video tutorials, and more visit go.roku.com/TV

Remote features



Voice control

Search across thousands of channels, switch inputs, and control your TV.



Private listening

Plug headphones into your remote to use private listening.



Personal shortcuts

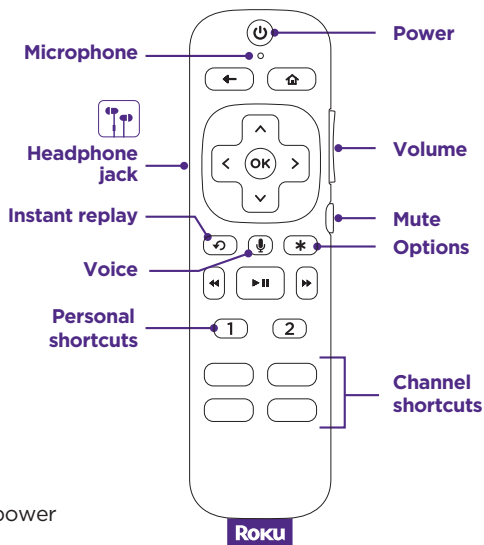
Quickly launch a channel, play your favorite playlist, and more in a tap.

To set: Press a personal shortcut button for on-screen instructions.



Lost remote finder

Use the Roku mobile app or press the TV power button to bring up the options menu.



Frequently asked questions

Why do I need an internet connection?

You'll need an internet connection to set up your TV, stream your favorite channels and for automatic software updates.

Why should I enter a payment method?

Saving a payment method makes it easy to rent or buy movies, subscribe to popular channels, and start free trials in just a click. No charges will be made without your authorization.

What type of voice commands can I use with this remote?

- "Play classic rock"
- "Turn captions on"
- "Launch The Roku Channel"
- "Skip 30 seconds"
- "Show me action movies"