

Quick Setup Guide

Glass Screen Protector

Before using your new product, please read these instructions to prevent any damage.

Package Contents

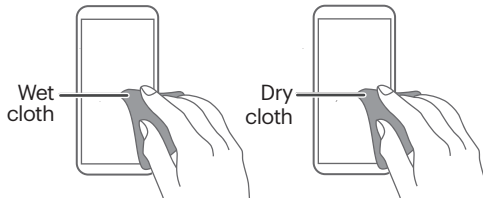
- Screen protector
- Alignment tool
- Wet cloth
- *Quick Setup Guide*
- Dry cloth
- Polishing cloth
- Dust removal adhesive

Features

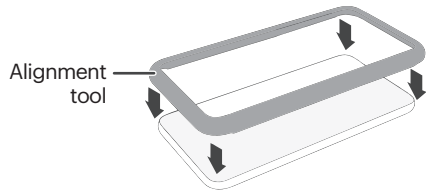
- Simple installation with alignment tool helps to prevent bubbles
- Compatible with Jitterbug® Smart4 case

Attaching your screen protector

- 1** Remove your phone case (for easier installation).
- 2** To prevent bubbles, clean your phone screen with the wet cloth, then remove moisture with the dry cloth.
- 3** Press the dust removal adhesive to your phone's screen repeatedly to remove any remaining debris.

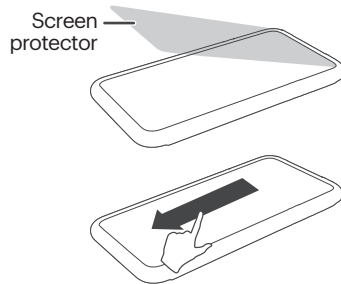


- 4** Push the alignment tool onto your phone until it snaps into place.

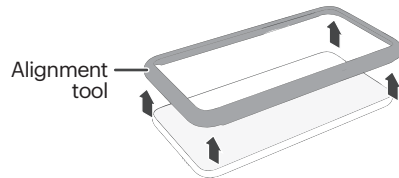


- 5** Use tab #1 to peel the backing film off the screen protector, then discard the film.

- 6** Align the top of the screen protector with the alignment tool, then press it down from top to bottom to adhere it to the screen.



- 7** Remove the alignment tool.



- 8** If there are bubbles, press them out toward the edges of the screen protector.
- 9** Reattach your phone case (if needed), then remove fingerprints with the polishing cloth.

ONE-YEAR LIMITED WARRANTY

Visit lively.com/legal/warranty for details.

Contact Lively

For customer service, call
1.800.733.6632 (U.S. and Canada)
www.lively.com/support

Lively is a trademark of Best Buy Health, Inc.
Distributed by Best Buy
Purchasing LLC Richfield, MN 55423.
©2023 Best Buy. All rights reserved.