

# INSIGNIA™

## QUICK SETUP GUIDE

# USB 3.0 to Gigabit Ethernet Adapter

NS-PU98635/NS-PU98635-C

## PACKAGE CONTENTS

- USB to Ethernet Adapter
- Driver CD
- Quick Setup Guide

## SYSTEM REQUIREMENTS

- Windows 10®, Windows® 8.1, Windows® 8, Windows® 7, OR
- Mac OS 10.6.X or higher
- Available USB port

Use this adapter to instantly connect to a 1000 Mbps network from the USB 3.0 port on your desktop or laptop computer.

## SETTING UP THE ADAPTER

**Note:** The driver software must be installed before you connect the adapter. The adapter does not need to be connected for the software to install.

Windows 10 and Windows 8.1 have a built-in driver. It allows you to use the adapter's basic functions without installing the drivers. For other situations, you must install the drivers.

### To install on a Windows PC:

**Note:** If your computer does not have a disc drive, you can download the driver from [www.insigniaproducts.com](http://www.insigniaproducts.com). Search for your model number (NS-PU98635) to find the driver on the product page. Or, attach an external disc drive to your computer.

**1** Insert the driver CD into your computer's optical drive. The installation wizard should open.

**Note:** If the wizard does not run automatically, locate and double-click **Run.exe** on the driver CD.

**2** Click on your operating system, then follow the on-screen instructions.



**3** When installation is complete, click **Finish**, then restart your computer.



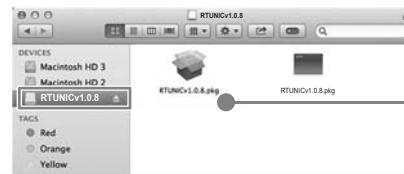
**4** Connect the USB connector on the adapter to an open USB port on your computer.

**5** Connect a network cable to the Ethernet port on the adapter.

### To install on a Mac:

**1** Insert the driver CD into your computer's disc drive.

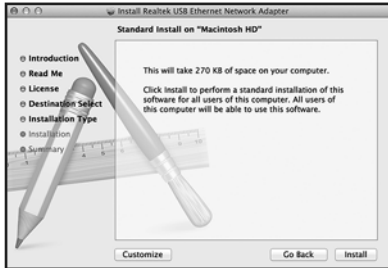
**2** In the *Finder*, select **RTUNICv1.0.8** under *DEVICES*, then open **RTUNICv1.0.8.pkg**. The driver setup wizard opens.



- 3 When the installer screen opens, click **Continue** to start the installation, then follow the instructions to complete the installation.

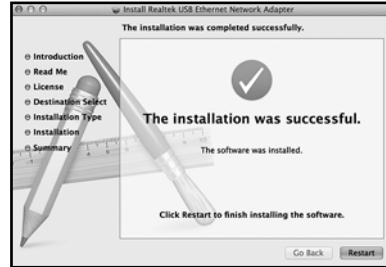


You may be prompted to enter your system username and password during installation.



- 4 Click **Install**, then click **Continue Installation**.

- 5 When installation is complete, click **Restart** to restart your computer and finish the installation.



- 6 Connect the USB connector on the adapter to an open USB port on your computer.  
7 Connect a network cable to the Ethernet port on the adapter.

## TROUBLESHOOTING

### *My computer does not detect the adapter*

- Make sure that all of the cables are connected securely and correctly.
- Make sure that the cables are not damaged.
- Try connecting to another USB port.
- Make sure that the driver is installed.

### *The driver did not install on my system*

- Make sure that the adapter and network cable are not damaged.
- To check the driver installation, go to (for Windows) **Control Panel>Device Manager>Network Adapters**. Look for a string like "Realtek USB GBE Family Controller."
- Install the driver again with the included installation disc.
- Temporarily shut down your firewall in case your anti-virus is preventing the installation of the driver.
- Make sure that your system is compatible with the driver. See "System Requirements" for more information.

## LEGAL NOTICES

### FCC Information

This device complies with Part 15 of the FCC Rules. Operation is subject to the following two conditions: (1) this device may not cause harmful interference, and (2) this device must accept any interference received, including interference that may cause undesired operation.

This equipment has been tested and found to comply with the limits for a Class B digital device, pursuant to part 15 of the FCC Rules. These limits are designed to provide reasonable protection against harmful interference in a residential installation. This equipment generates, uses, and can radiate radio frequency energy and, if not installed and used in accordance with the instructions, may cause harmful interference to radio communications. However, there is no guarantee that interference will not occur in a particular installation. If this equipment does cause harmful interference to radio or television reception, which can be determined by turning the equipment off and on, the user is encouraged to try to correct the interference by one or more of the following measures:

- Reorient or relocate the receiving antenna.
- Increase the separation between the equipment and receiver.
- Connect the equipment into an outlet on a circuit different from that to which the receiver is connected.
- Consult the dealer or an experienced radio/TV technician for help.

Changes or modifications not expressly approved by the party responsible for compliance could void the user's authority to operate the equipment.

### ICES-003

This Class B digital apparatus complies with Canadian ICES-003;

Cet appareil numérique de la classe B est conforme à la norme NMB-003 du Canada.

## ONE-YEAR LIMITED WARRANTY

Visit [www.insigniaproducts.com](http://www.insigniaproducts.com) for details.

## CONTACT INSIGNIA:

For customer service, call 877-467-4289 (U.S. and Canada) or 01-800-926-3000 (Mexico)  
[www.insigniaproducts.com](http://www.insigniaproducts.com)

INSIGNIA is a trademark of Best Buy and its affiliated companies.

Distributed by Best Buy Purchasing, LLC  
7601 Penn Ave South, Richfield, MN 55423 U.S.A.

©2018 Best Buy. All rights reserved.

**Made in China**