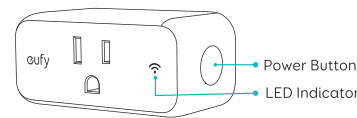




## Owner's Manual

### Smart Plug Mini

### At a Glance



#### LED Indicator:

- Indicates the on/off status of Smart Plug Mini.
- Indicates the network connection status.

#### Power Button:

- Press to turn Smart Plug Mini on or off.
- Press and hold for 5 seconds to reset the Wi-Fi connection.

LED	Status	Indicates
	Flashing amber and blue	Your smartphone is ready to connect to Smart Plug Mini.
	Rapidly flashing blue	Smart Plug Mini is connecting to a Wi-Fi network.
	Solid blue	Smart Plug Mini is connected to a Wi-Fi network.

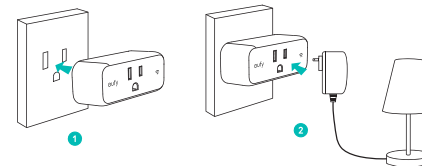
### What You Need for Wi-Fi Setup



- Your Smart Plug Mini
- A device you want to control
- A smartphone or tablet
- A wireless router

### Using Your Smart Plug Mini

- Plug Smart Plug Mini into a power outlet.
- Plug a device into Smart Plug Mini.



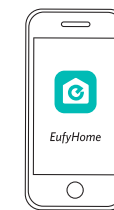
- Control the plugged-in device with the EufyHome app or with your voice using Amazon Alexa / the Google Assistant.

- Smart Plug Mini only supports electrical devices that are turned on by using a mechanical switch.
- Devices controlled by an electronic or infrared remote control are not supported.
- To wirelessly control your device, make sure the device is turned on.
- There are three ways to turn the connected device on or off: 1) press the Power Button on Smart Plug Mini; 2) use the EufyHome app; 3) control the device with your voice via Amazon Alexa.

### Downloading the EufyHome App

#### What you need:

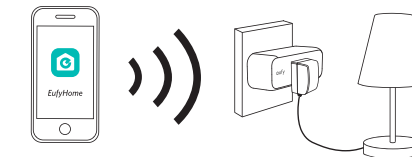
- A Wi-Fi router supporting the 2.4 GHz and 802.11 b/g/n bands; the 5 GHz band is not supported;
- A smartphone or tablet connected to a Wi-Fi network;
- A smartphone or tablet running iOS 8.0 (or above) or Android 4.3 (or above).



Download the EufyHome app from the App Store (iOS devices) or Google Play (Android devices).

### Connecting to a Wi-Fi Network

- In the EufyHome app, tap the "+" icon in the top right corner to add "Smart Plug Mini" to your EufyHome account.
- Follow the on-screen instructions to complete Wi-Fi setup.



The instructions in this manual are for your reference only. The app will be updated from time to time. Always follow the instructions in the app to complete Wi-Fi setup.

### Controlling Your Plugged-in Devices with the EufyHome App

With the EufyHome app, you can control devices connected to Smart Plug Mini.

	Turn Smart Plug Mini on or off.
	Control plugged-in devices remotely.
	Set schedules for plugged-in devices. Create an event to determine when plugged-in devices will automatically turn on or off.
	Set a countdown timer: Plugged-in devices will automatically turn on or off after a preset amount of time.
	Enable Away Mode: Plugged-in devices will randomly turn on and off during the set period of time, giving the impression that someone is home.
	Monitor energy usage: Track the power consumption of your plugged-in devices and get a summary of the energy fee after the device is used for one day/week/month/quarter/year.



For FAQs and more information, please visit  
[www.eufylife.com](http://www.eufylife.com)

T1202  
51005000880 V02

## Controlling Your Plugged-in Devices with Amazon Alexa / the Google Assistant (Optional)

**Before you start, make sure that:**

- Smart Plug Mini is connected with the EufyHome app.
- You have an Alexa-enabled device (i.e. Eufy Genie, Amazon Echo, Echo Dot and Amazon Tap) or a device enabled with the Google Assistant (i.e. Google Home). These devices are sold separately.
- The Amazon Alexa app or the Google Home app is already installed on your smart device, and you have created an account.

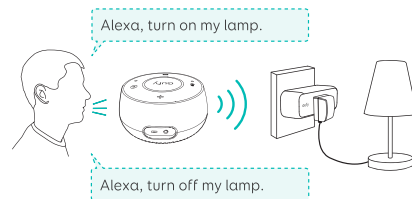
**To control your plugged-in devices with Amazon Alexa:**

- 1 Open the Alexa app and select "Skills" from the menu in the top left corner of the homepage.
- 2 On the Skills screen, search for "EufyHome".
- 3 Once you have found the "EufyHome" skill, tap **Enable**.
- 4 Login with your EufyHome account to authorize Alexa to access your account.
- 5 Discover new smart devices via the "Smart Home" menu in the Alexa app or Alexa voice control.

►7

- Once the device is connected, you can control the plugged-in device with your voice.

- 6 Say simple commands to Alexa.  
(**Note:** You can modify the name of a device in the EufyHome app. )



**To control your plugged-in devices with the Google Assistant:**

Smart Plug Mini now works with the Google Assistant on devices like the Google Home.

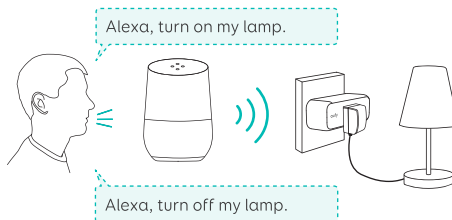
- 1 Open the Google Home app.
- 2 From the menu of the Google Home app, tap **Home Control**. If you cannot find **Home Control**, upgrade your app to the latest version.

►8

- 3 Tap the "+" icon in the Device List and then select "EufyHome".

- 4 Follow the instructions in the Google Home app to authorize the Google Assistant with your EufyHome account.

- 5 After successful configuration, say simple commands to the Google Assistant to control the plugged-in device with your voice.



You can modify your device name in the EufyHome app.

►9

## Troubleshooting

### 1. Cannot connect to your Wi-Fi network.

- Check whether you have entered the correct Wi-Fi password.
- Check whether there are any Internet connection problems. If the Wi-Fi signal is too weak, reset your wireless router and try again.
- If the LED Indicator is solid blue, indicating Smart Plug Mini is connected to a Wi-Fi network, refresh or restart the EufyHome app and try again.
- If you still have trouble, press and hold the Power Button for 5 seconds to reset the Wi-Fi connection.

### 2. How to reset the Wi-Fi connection.

- Press and hold the Power Button for 5 seconds to reset the Wi-Fi connection. The LED Indicator will start flashing and alternate between amber and blue, indicating Smart Plug Mini is ready for Wi-Fi setup.

### 3. No response when using the devices with the EufyHome app.

- Check whether Smart Plug Mini is powered on.
- Check whether there are any Internet problems. If necessary, reset your Wi-Fi router and try again.
- If your smart device uses a 3G or 4G mobile network, check whether the network signal is abnormal. Try again when the signal becomes stable.
- If you still have trouble, reset the Wi-Fi connection and restart the Wi-Fi setup.

►10

### 4. Cannot control the connected devices with Alexa voice control.

- Check whether there are any Internet connection problems.
- Check whether you have installed the Alexa app onto your smart device and enabled the "EufyHome" Skill in the Alexa app. For details, refer to the **Controlling Your Plugged-in Devices with Amazon Alexa / the Google Assistant (Optional)** section of this manual.
- Check whether you are using the proper commands when talking to Alexa. When making your request, first say the wake word "Alexa".
- Repeat your question. Speak clearly to Alexa in English.
- Check whether you have modified the name of Smart Plug Mini in the EufyHome app. If yes, you need to rediscover the device through the Alexa app or Alexa voice control.

### 5. Cannot control the connected devices with the Google Assistant voice control.

- Check whether there are any Internet connection problems.
- Check whether you have installed the Google Home app onto your smart device and enabled the "EufyHome" Skill in the Google Home app. For details, refer to the **Controlling Your Plugged-in Devices with Amazon Alexa / the Google Assistant (Optional)** section of this manual.

►11

- Check whether you have modified the name of Smart Plug Mini in the EufyHome app. If yes, you need to rediscover the device through the Alexa app or Alexa voice control.
- Repeat your question. Speak clearly to the Google Assistant.
- Check whether you have modified the name of Smart Plug Mini in the EufyHome app. If yes, unlink your EufyHome account from the Google Home app and then relink.

### 6. What should you do if Smart Plug Mini automatically turns off?

- Smart Plug Mini only supports devices whose power is no more than 1800W. Unplug the connected device and check whether the power exceeds 1800W.

## Customer Service

- 18-month limited warranty
- Lifetime technical support
- [support@eufylife.com](mailto:support@eufylife.com)
- (US) +1 (800) 988 7973 Mon-Fri 9:00 - 17:00 (PT)  
(UK) +44 (0) 1604 936200 Mon-Fri 6:00 - 11:00 (GMT)  
(DE) +49 (0) 69 9579 7960 Mon-Fri 6:00 - 11:00  
(日本) +81 03 4455 7823 月 - 金 9:00 - 17:00  
(中国) +86 400 0550 036 周一至周五 9:00 - 17:30
- @EufyOfficial @EufyOfficial
- @EufyOfficial @EufyOfficial

►12