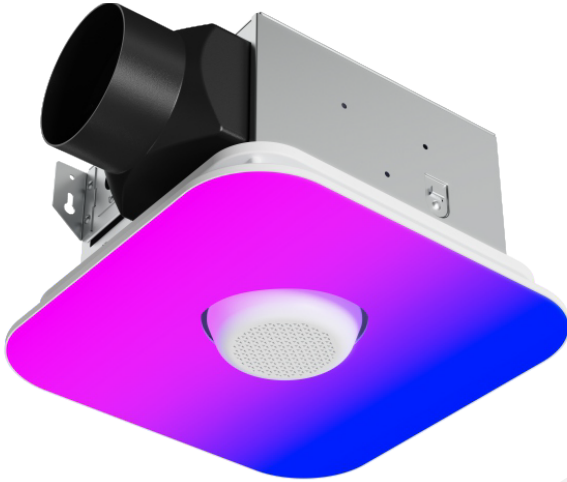


BLUETOOTH SPEAKER WITH LIGHT AND BATHROOM EXHAUST FAN

READ AND SAVE THESE INSTRUCTIONS



Should you experience any issues while operating any of our products, you can directly reach out to our Customer Support via Amazon Orders. Or you can send your inquiry to our Official Customer Support at:

Table of Contents

Installation Video	1
Safety Information	2
Product Specifications	3
Planning Installation	3
Installation	4
Pre-Installation	4
Pipe line installation and wiring	5
Installation	6
Installation steps of lamp body	7
Usage scenario	8

APP	9
Remote Control	15
Contact Us	16
Customer Service	17

Safety Information

PLEASE READ AND UNDERSTAND THIS ENTIRE MANUAL BEFORE ATTEMPTING TO ASSEMBLE, OPERATE OR INSTALL THE PRODUCT.

1. Always disconnect the power supply prior to servicing the fan, motor or junction box.
2. Follow all local building, safety and electrical codes as well as NEC (National Electrical Code) and OSHA (Occupational Safety and Health Act).
3. Electric Service supply must be 120 volts, 60 hertz.
4. This product must properly connect to the grounding conductor of the supply circuit.
5. Do not bend or kink the power wires.
6. Do not use this fan with any solid state control device, such as a remote control, dimmer switch, or certain timers. Mechanical timers are not solid state devices.
7. Do not install in a ceiling with insulation greater than R40.
8. Duct work should be installed in a straight line with minimal bends.
9. Duct work size must be the same size as the discharge and should not be reduced. Reducing the duct size may increase fan noise.
10. If this unit is to be installed over a tub or shower, it must be marked as a appropriate for the application. When the fan is going to install in the bathroom, the fan and the tub need to be more than 1.0 meter between each other, the fan required to install at the other side of the tub in ceiling. Acceptable for use over a bathtub or shower when installed in a GFCI protected branch circuit.



WARNING: TO REDUCE THE RISK OF FIRE, ELECTRIC SHOCK, OR INJURY TO PERSONS, OBSERVE THE FOLLOWING:

Use this unit in the manner intended by the manufacturer. If you have any questions, please call customer service.



WARNING: Before servicing or cleaning unit, switch power off at service panel and lock the service disconnecting means to prevent power from being switched on accidentally. When the service disconnecting means cannot be locked, securely fasten a prominent warning device, such as a tag, to the service panel.



WARNING: Installation work and electrical wiring must be done by a qualified person(s) in accordance with all applicable codes and standards, including fire-rated construction.



WARNING: Sufficient air is needed for proper combustion and exhausting of gases through the flue (chimney) of fuel burning equipment to prevent backdrafting. Follow the heating equipment manufacturer's guideline and safety standards such as those published by the National Fire Protection Association (NFPA), and the American Society for Heating, Refrigeration and Air Conditioning Engineers (ASHRAE) and local code authorities.



WARNING: When cutting the ceiling, do not damage electrical wiring and other hidden utilities.



WARNING: Ducted fans must always be vented to the outdoors.



CAUTION: For general ventilating use only. Do not use to exhaust hazardous or explosive materials and vapors.



CAUTION: Not for use in cooking areas.



CAUTION: To reduce the risk of injury to persons, install the fan at least 7.6 ft. (2.1 m) above the floor.

Product Specifications

Air volume: 110 CFM	Power consumption: 50 W
120 V, 60 Hz	Lumens: 2000LM
Duct diameter: 4 in.	
Sound output: 1.0 Sones	

Planning Installation

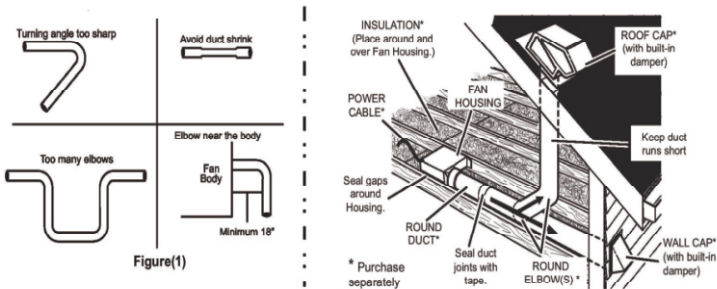
When installing the ventilation fan in a new construction site, install the main body of the fan and duct work during the rough-in construction of the building. The grill should be installed after the finished ceiling is in place.

When installing in existing construction, use the dimensions on page 3 to determine required hole size for the ceiling. The grill edges should overlap the finished ceiling.



NOTE: If installing in existing construction, you must have access to space above and below the installation location.

The ducting from this fan to the outside of the building has a strong effect on the air flow, noise and energy use of the fan. Use the shortest, straightest duct routing possible for best performance, and avoid installing the fan with smaller ducts than recommended. Insulation around the ducts can reduce energy loss and inhibit mold growth. Fans installed with existing ducts may not achieve their rated airflow. Do not install the ventilation fan in areas where the duct work will require configurations as shown in the following figure (1):



Recommended to put insulation around the fan housing to minimize the building heat loss. Seal all the gaps around the housing with caulk or other similar material to inhibit air leakage to the exterior of the thermal envelope of the building. Rigid sheet metal duct and the shortest path to the outside will minimize static pressure losses and promote adequate flow.

Pre-Installation

TOOLS REQUIRED



Claw hammer



Philips screwdriver



Flat screwdriver



Utility knife



Safety glasses



Drill bits

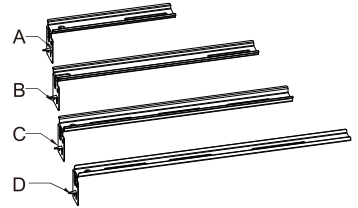
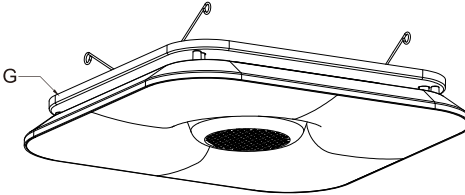
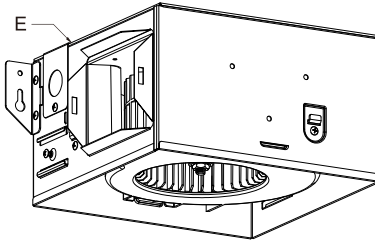
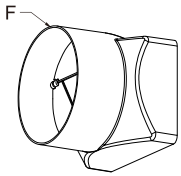


Power drill



Duct tape

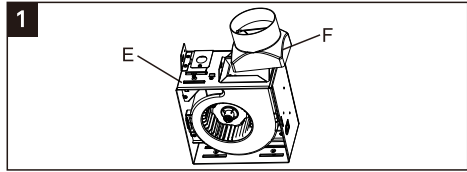
PACKAGE CONTENTS



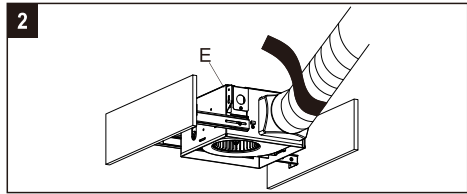
Part	Description	Quantity
A	Narrow body fixed bracket	1
B	Wide body fixed bracket	1
C	Universal Fixed Bracket A	1
D	Universal Fixed Bracket B	1
E	Fan assembly	1
F	Duct connector	1
G	Lamp body component	1
H	Wooden screw(M4x12mm)	3
I	Long wooden screw (M4x30mm)	6
J	Wire nut	4

Pipe line installation and wiring

1. Firstly, insert the air outlet (F) into the side air outlet position of the exhaust fan (E) and ensure a tight installation.



2. Connect a 4 in. circular duct to the fan housing (E), securing it with duct tape and make sure there is no air leak.



Make sure that there are no sharp bends in the duct line (Diagram A). For 90 degree angles, use smooth curves or break into two smaller angles or curves (Diagram B).



Diagram 2
SECURE WITH DUCT TAPE

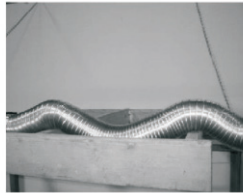
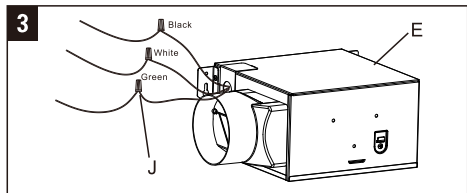


Diagram A
WRONG SUPPORT



Diagram B
RIGHT SUPPORT & ANGLE

3. Thread the wire through the hole and pull it into the junction box (not included). Use the quick connector (J*3) to secure the 120 VAC indoor wiring from the wall switch to the fan, as shown in the diagram, and push the wires back into the holes. Reconnect the junction box cover.



CAUTION: Make sure power is switched off at service panel before starting installation.

* For safety & efficiency of the ventilation system, avoid sharp angles & loose support.

4.(A) Electrical installation (for fan only)

The ground wire must be connected to the green wire in the junction box. The neutral wire must be connected to the white wire in the junction box. The hot wire must be connected to the black wire in the junction box.

(C) Units with light & fan operating with one switch

The neutral wire from the power supply must be connected to white wires of fan & light. The hot wire from the switch must be connected to both black wires of fan & light. The green wire from the power supply is to be connected to both green wires.

(B) Units with two separate switches (for fan and light)

The neutral wire from the power supply must be connected to both white wires. The hot wire from the fan switch must be connected to the black wire of the fan. The hot wire from the light switch must be connected to the black wire of light.

Installation

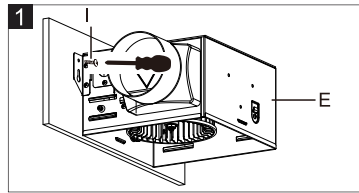
Fan housing installation method 1

ASSEMBLY INSTRUCTIONS

When there is a reliable cross beam or support beam at the installation position.

1. MOUNT HOUSING TO JOIST OR FJOIST.

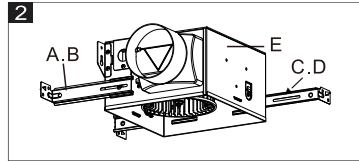
Hold the housing so that it is in contact with the bottom of the joist. Attach the housing with four (4) screws to the joist through the holes in each mounting flange.



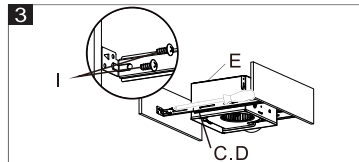
Fan housing installation method 2

For spacing of 21-1/4 in. to 23-1/2 in. between ceiling joists:

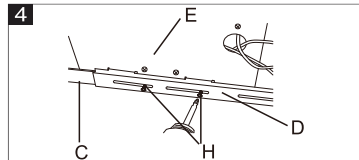
1. Insert suspension bracket (A) into the tabs on the fan housing (E) and the side suspension bracket (C) into suspension bracket (E). Repeat on the opposite side of the fan housing (E).



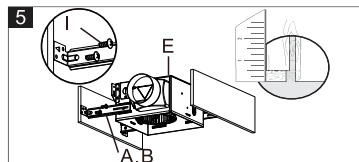
2. Insert the suspension brackets (C) and (D) into the protruding ears on both sides of the housing (E). Use a Claw hammer to drive the steel nails of the bracket into the wall, and then use wooden screws (1*6) to connect the ends of each suspension bracket (C) and (D) to the ceiling beam.



3. Secure the suspension bracket to the fan cover using machine screws (H*3).



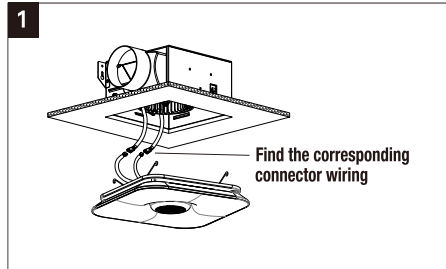
4. Adjust the position of the fan cover (E) so that its bottom edge is flush with the ceiling. Do not install the fan cover (E) onto the support beam.



Installation steps of lamp body

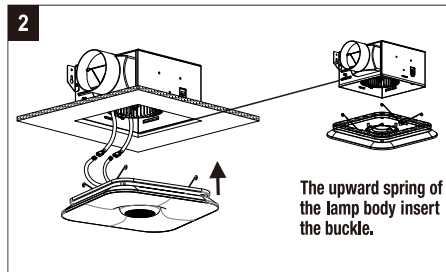
Attention:

Match the wire with the corresponding connector.



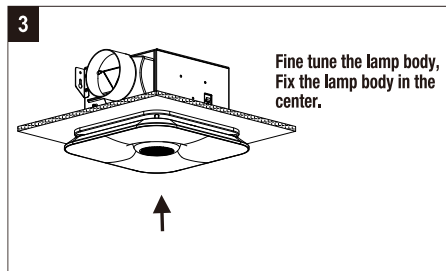
Attention:

The spring is aligned inside the snap and must not be snapped out of alignment.



Attention:

Power can only be turned on after the lamp body is fixed.



Matters needing attention:

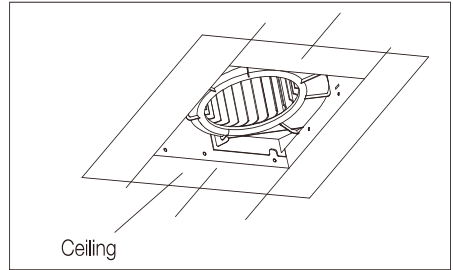
- * The manufacturer recommends the correct use of lighting fixtures. Please follow this guide for proper and safe installation and use, and keep this guide for reference.
- * Before installation, maintenance, or repair, the power must be disconnected and live operation is prohibited.
- * If you have any questions, please consult a professional electrician or contact a retailer to ensure that the installation complies with relevant regulations. Some special regulations require that the lighting fixtures be installed by a professional electrician.
- * Ensure that the wiring is secure, and after connecting the wire, try pulling it. If the wire end is not clamped and falls off, it must be reconnected and confirmed again.
- * Please clean the inside of the lamp with a dry cloth, do not use corrosive or soluble substances, and avoid liquid contact with electrical components.
- * Please install the lighting fixtures out of reach of children.
- * Please read the relevant technical parameters of the lamp in detail and verify the relevant content on the lamp nameplate or installation manual.

Usage scenario

Unit for remodeling or existing homes

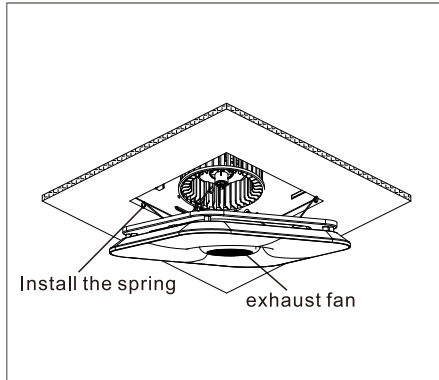
1. In case there is a ventilation unit with the same dimensions in the ceiling proceed as below:

- * Remove the old unit.
- * Check the existing duct work and electrical wiring.
- * Install the unit as described in installation 1.



2. In case you want to make a new opening in the existing ceiling:

- *Find the best location for the ventilation purpose.
- *Make sure the chosen place has easy access to exterior air outlet (wall cap or roof jack) and there won't be the need to use sharp angles or very long duct.
- *Make sure the chosen place duct work will not interfere with any other existing duct work in the building.
- *Make sure there is no electrical wiring or any pipes behind the chosen place.
- *Open the optimal place.
- *Make the strong support beams for the unit (make sure it is strong enough for the weight of the unit).
- *Provide the duct system.
- *Provide the electrical wiring.
- *Follow the instructions on Installation 1.



APP

This product has a unique and exclusive two-in-one design - the smart LED lamp and Bluetooth stereo audio speaker. Bluetooth 4.0+EDR (enhanced datarate) and purity and definition of particular voice based on DSP technology. Wish you have infinite joy from the combination of light and music.

- Change color, warm/cool and brightness as you need;
- Timer setting: auto light, auto music and alarm clock;
- Mood lighting and music rhythm, enjoy music anywhere;
- Sound effect setting: Pop, Classical, Jazz, Bass and Flat.



Android



IOS

Scan the QR-Code download APP



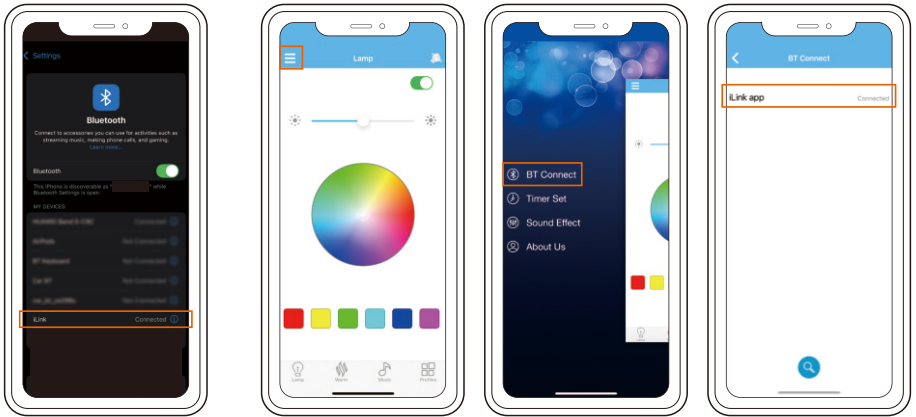
Attention:
Make sure your phone's
Bluetooth is turned on.

Step 1: Bluetooth Connection

For the first time you use it or never pair with "iLink" after moving the equipment, please have it paired according to the steps below:

1. First of all, please enter your phone's settings, open the Bluetooth, and pair with the "iLink ". Enter the System Settings - Bluetooth - to discover and connect the device name " iLink ". Once connected, you will hear the connection tone.

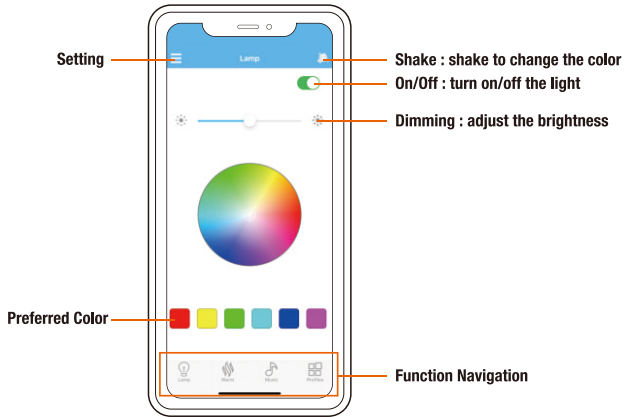
2. Open " iLink " app, enter the main interface. Click the menu icon, enter the " BT Connect ", as follow:



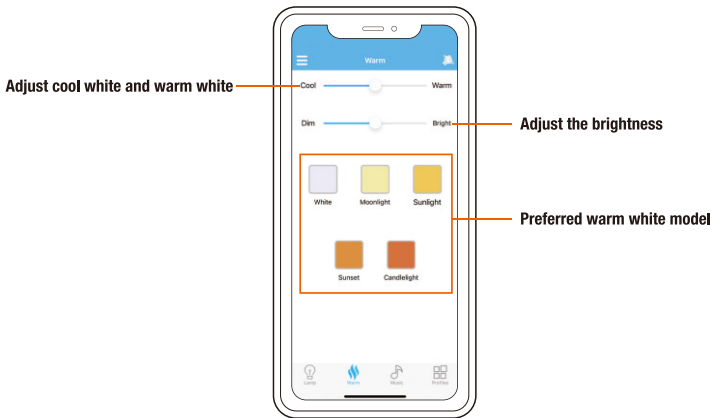
Tips : The next time you use, " iLink " will connect with your phone automatically (the Bluetooth is open).

Step 2: Main User Interface

1. Lamp: cool white light control



2. Warm: warm white light control



APP

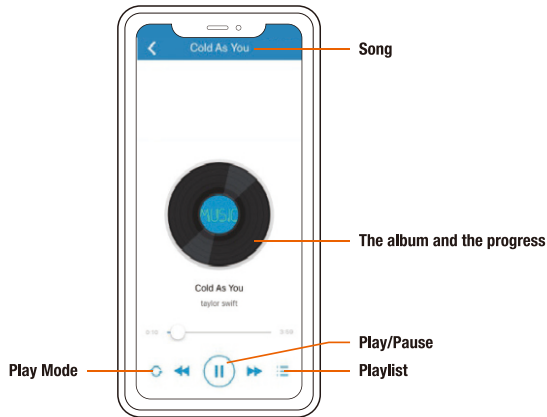
3. Music



When you use the lamp for the first time, please enter your phone's settings, open the Bluetooth, and pair the "iL-ink". Then enjoy your favorite music. Only iTunes Player is supported for musical rhythm; the color flashing with the music. The third party player is not supported.

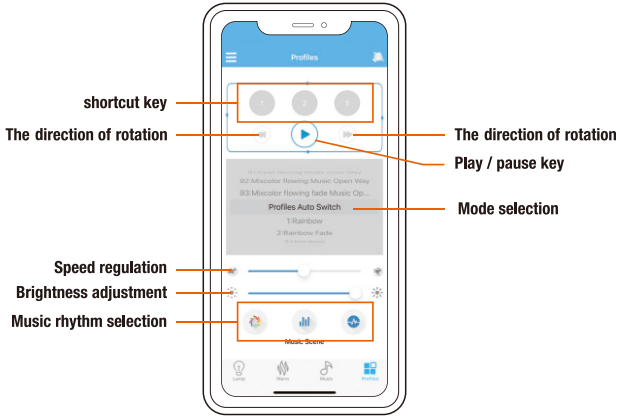
The audio device will automatically play sound when music is streamed via a mobile app.

Music play interface



Tips : iOS system, non-iTunes music have none "Musical Rhythm" lighting effect.

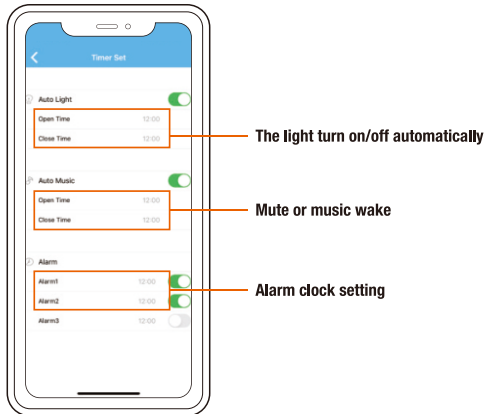
4. Profiles



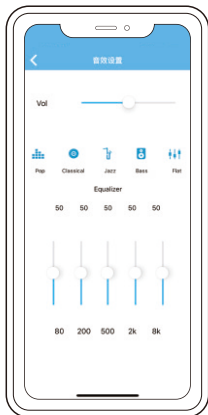
5. Timer Setting

It is your close sleep assistant and smart alarm clock. The music and lamp turn on/off automatically.

Tips : The function automatic work even when the Bluetooth disconnected.



6. Sound Effect

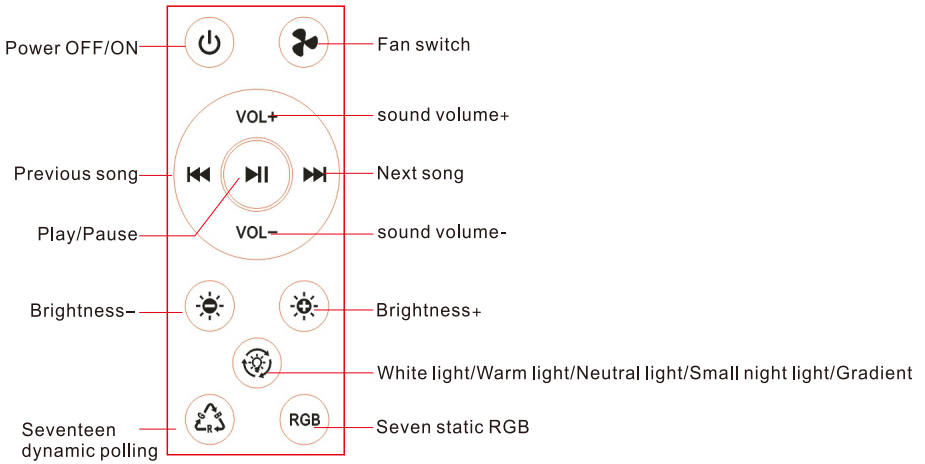


Sound effect setting: Pop, Classical, Jazz, Bass and Flat.
You can set your favorite high pitch/low pitch sound effect via tone equalizer.

Warning: Do not change the light source! Do not dismantle the machine!

Remote Control

“Within 20 seconds of power-on, press and hold the power key and RGB key at the same time to pair the 2.4G remote control. After pairing is successful, the light will flash once.”
The remote control cannot be cleared after pairing and can only be used one-on-one



Color temperature memory function:

First select the color temperature you often use, turn off the light for more than 15 seconds and then turn it on again, the color temperature will keep the state before turning off, Color temperature will switch if turned on for a short period of time (less than 15 s)

Wall switch logic function:

After the switch is turned off (the light is completely turned off), turning on the light again will result in white light/warm light/neutral light/small night light/RGB gradient/RGB iridescence, cycling