

PIONEER® QUANTUM Ultra™

Ceiling Concealed Ducted Split Systems

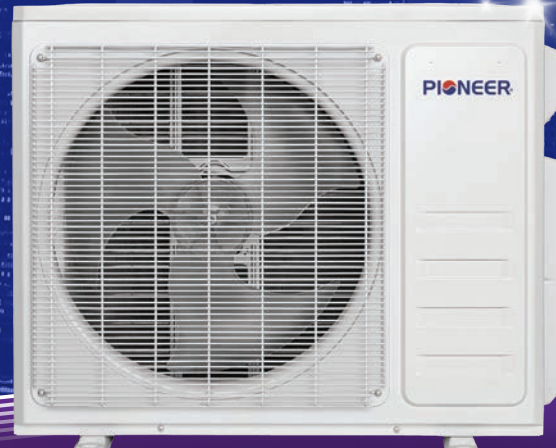
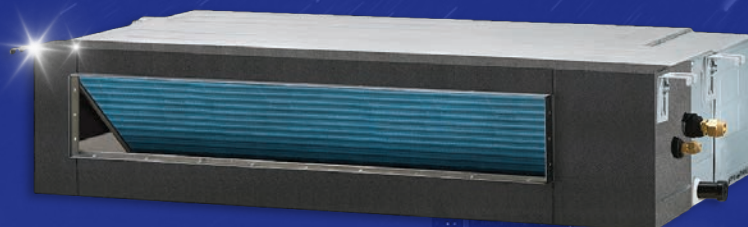
23~24 SEER Ultra High Efficiency

Heat Pump + DC Inverter in One System

Single Zone (9000~24000 BTU/hr)

110~120V / 208V~230V, 60Hz, 1Ph

Wireless Access Via Free Smartphone App



RYT-24

DC INVERTER HEAT PUMP

INVERTER++
TECHNOLOGY

R454b

Smart
Airflow

High
Efficiency

Insulated
DESIGN

Cloud
Connected

DUAL
DRAINAGE

Low Noise

WORKS
WITH

amazon alexa

Google Assistant

Siri



Whisper-Quiet
Operation



Dual Drain
Options



LED
Display



Convenient
Maintenance



Eco-Friendly
Refrigerant



Customizable
Timer



Soft Breeze
Airflow



3D Air Flow



Ultra-Thin
Design



Power Loss
Memory Recovery



Rapid Delivery
Output




Energy
Saving



Wireless
Control

STANDARD FEATURES

- Horizontal Ceiling Concealed Ducted Indoor Unit
- Cooling Only or Heat Pump Applications
- Ultra Slim Fully Cased Compact Cabinet Design
- Furred-In Ceiling Concealed Ducted Applications
- Full Galvanized Heavy Steel Casing for Indoor Units
- Convertible (Rear-Bottom) Air Return
- Digital LCD Screen Wired Remote Controller
- Ultra Quiet Air Delivery With High Performance
- Variable Speed ECM Indoor Fan Motors
- Heavy Gauge Closed Cell External Rubber Insulation
- Auto-Restart with Memory for Power Outages
- Timer for Preset Starting and Stopping
- Auto Changeover, Dry, and Fan Only Modes
- Season Sensitive Operational Logic
- Self-Learning Time-Demand Defrost
- Automatic Swing Directional Louvers
- Three + Auto Speed PSC Blower Motor
- Digital Motor Speed Control System
- Whisper Quiet Indoor Motor With Ball Bearings
- High Air Flow Volume for Quick Performance
- Ultra High-Efficiency Grooved Copper Tubes
- Enhanced Louvered Hydrophilic Aluminum Fins
- Latest Technologies in DC Inverter Driver System
- Dynamically Balanced Ultra Quiet Scirocco Blowers
- Anti Mildew Treatment on Blower Wheels
- Superior Energy Efficiency and Performance
- Fully Variable Speed Compressors for All Models
- Fully Charged With Environmentally Friendly R32 Gas
- Precision Controlled Compressor and Fan Motors
- Ultra Galvanized Sheet Metal Parts
- Heavy Coat of Baked Enamel Paint for the Outdoor Unit
- Durable Outdoor Fan with High Glass Content
- Extra Durable, Permanently Lubricated Outdoor Motor
- Internal Overload Protection for Motors
- Flare Type Refrigerant Connections
- Full Operating Charge of Refrigerant
- Standardized Cabinet Design for All Models
- Easy Access for Piping and Wiring Confections
- Highest Grade Components for Long Life Expectancy
- Ample Availability of Spare Parts and Accessories

Full System Model Number			RYT009GLSI24RL	RYT012GLSI24RL	RYT018GLSI24RL	RYT024GLSI24RL
	Indoor Unit Model Number		RT009GLSILCFHG	RT012GLSILCFHG	RT018GLSILCFHG	RT024GLSILSFHG
	Indoor Unit Model Code		Z2U30304000587	Z2U30104000478	Z2U30304000536	Z2U30304000537
	Outdoor Unit Model Number		YN009GLSI24RPG	YN012GLSI24RPG	YN018GLSI24RPG	YN024GLSI24RPG
	Outdoor Unit Model Code		Z2U20103009117	Z2U20103009151	Z4U20103038432	Z2U20103009200
System Type			QUANTUM ULTRA Series Ceiling Recessed Concealed Duct Mounting Type Split Heat Pump System			
Modes			Cooling, Heating, Dehumidification, Ventilation			
Control type			Standard set with wired remote (Other optional controllers are available)			
Input power supply			208~230V~/60Hz/1P	208~230V~/60Hz/1P	208~230V~/60Hz/1P	208~230V~/60Hz/1P
Power supply range			187~253 VAC	187~253 VAC	187~253 VAC	187~253 VAC
Energy Star Rating			✓	✓	✓	✓
NEEP Rating			✓	✓	✓	✓
Cooling performance	Rated cooling capacity (at 95°F)	Btu/h	9,500	11,000	17,000	22,000
	Cooling capacity range	Btu/h	2,000~10,400	2,000~12,300	6,000~19,400	7,550~24,600
	EER2 Rating	Btu/W.h	12.0	11.0	11.0	11.0
	SEER2 Rating	Btu/W.h	19.6	19.0	20.3	19.0
Heating performance	Rated Heating capacity (at 47°F)	Btu/h	9,500	12,000	18,000	25,000
	Rated Heating capacity (at 17°F)	Btu/h	8,400	10,200	14,500	22,000
	Heating capacity range	Btu/h	2,500~12,300	3,100~12,300	4,000~21,400	8,700~28,500
	HSPF2 Rating (Region IV)	Btu/W.h	10.0	8.4	10.0	10.0
	HSPF2 Rating (Region V)	Btu/W.h	8.8	7.3	9.2	8.8
	COP2 (at 47°F)	W/W	3.5	3.34	2.8	3.34
	Max. Heating capacity (at 5°F)	Btu/h	7,400	8,800	13,200	18,500
	Performance percentage		78%	73%	73%	74%
	COP2 (at 5°F)	W/W	1.85	1.8	1.8	2.0
	Max. Heating capacity (at -4°F)	Btu/h	5,890	7,440	11,160	15,500
	Max. Heating capacity (at -13°F)	Btu/h	4,750	6,000	9,000	12,500
Rated power consumption	Cooling	W	750	940	1,450	1,870
	Heating	W	800	1,030	1,805	2,030
Rated power current	Cooling	A	3.2	4.1	6.3	8.1
	Heating	A	3.5	4.5	7.8	8.8
Min. circuit ampacity		A	10	11	12	17
Max. circuit breaker		A	15	15	20	25
Moisture removal		Pint/day	55	80	110	130
Refrigerant and room size specifications	Type	R454b (A2L rated refrigerant with a lower GWP rating of 466)				
	Amount	Ozs	25.0	35.3	45.5	55.0
	Sufficiency for max line set length	Ft	25	25	25	25
	Adjustment amount per feet	Ozs	0.11	0.11	0.11	0.11
	Recommended room size	Sq.Ft	250~350	350~500	500~750	750~1,000
	Refrigerant leakage detector module	Standard / Assembled in indoor unit				
	Minimum room size (unit height 6')	SqF	28	40	51	62
Air volume and sound level	Turbo/High/Med/Low/Mute	CFM	335/305/276/182/182	360/330/270/210/180	500/426/370/300/283	741/623/558/529/470
		dB(A)	43/41/39	43/41/39	41/38/36	41/38/34
External static duct pressure max		Inch WC	0.4	0.4	0.4	0.5
Outdoor sound		dB(A)	50	52	53	54
Connecting pipe	Gas	In (OD)	3/8"	3/8"	1/2"	5/8'
	Liquid	In (OD)	1/4"	1/4"	1/4"	1/4"
	Accessory line set length available	Feet	10' / 16' / 25' / 33' / 50' (can be further extended using coupling kits). Both Standard copper and fully flexible sets are available			
	Maximum allowable length	Feet	50	50	65	65
	Maximum allowable vertical run	Feet	33	33	50	50
Indoor unit dimensions and weight	Net unit dimensions (WxDxH)	Inch	27"-1/2 x 19"-1/4 x 7"-7/8	27"-1/2 x 19"-1/4 x 7"-7/8	35"-1/2 x 19"-1/4 x 7"-7/8	43"-1/4 x 17"-3/4 x 7"-7/8
	Carton box dimensions (WxDxH)	Inch	35"-1/2 x 21"-7/8 x 9"-7/8	35"-1/2 x 21"-7/8 x 9"-7/8	44"-1/8 x 21"-7/8 x 9"-7/8	50"-3/4 x 22"-1/4 x 9"-7/8
	Shipping factor		0.00192	0.00192	0.00238	0.00278
	Net unit weight	Lbs	33.1	33.1	39.7	50.7
	Shipping weight	Lbs	40.8	40.8	46.3	58.4
Outdoor unit dimensions and weight	Net unit dimensions (WxDxH)	Inch	31"-7/8 x 12" x 21"-5/8	31"-7/8 x 12" x 21"-5/8	36"-1/2 x 15" x 27"-1/2	38"1/2 x 16"-5/8 x 31"-5/8
	Carton box dimensions (WxDxH)	Inch	32"-7/8 x 13" x 22"-5/8	32"-7/8 x 13" x 22"-5/8	37"-3/8 x 16"-1/2 x 28"-7/8	40"-1/4 x 18-7/8 x 31"-7/8
	Shipping factor		0.00256	0.00256	0.005	0.00694
	Net unit weight	Lbs	52.7	58.4	90.4	104.7
	Shipping weight	Lbs	57.1	65.0	97.0	119.0
Connecting cable			AWG #16 x 4 Core TC-ER cable			
Temperature setting range		*F	62 ~ 86			
Working ambient temperature range for cooling		*F	5 ~ 131			
Temperature setting range for heating		*F	-13 ~ 86			

Rated cooling performance data is based on standard ARI conditions of **80°F-DB/67°F-WB** Indoor and **95°F** Outdoor ambient conditions. Rated heating performance data is based on standard ARI conditions of **70°F-DB/60°F-WB** Indoor and **47°F** Outdoor ambient conditions. Variable speed inverter systems adjust their output capacity automatically based on actual indoor and outdoor temperatures, thermostat settings and other heating or cooling loads. Capacity of the system output and related power input will vary based on these conditions. System contains A2L refrigerant and the minimal room size data must be strictly adhered to for any standard installation to avoid fire risk. This data assumes the indoor unit installation height of minimum 6 feet from the floor level. Lower levels require larger min. room sizes. **Specifications and data listed herein are subject to change without notice due to constant product and engineering improvements. Always refer to the equipment nameplate for applicable exact information.**