



IMPORTANT SAFETY INSTRUCTIONS

READ ALL INSTRUCTIONS BEFORE USING THIS FURNISHING.

PLEASE SAVE THESE INSTRUCTIONS IN AN OBVIOUS PLACE FOR THE END USER AFTER ASSEMBLY.



WARNING



When using an electrical furnishing, basic precautions should always be followed, including the following:

WARNING – To reduce the risk of burns, fire, electric shock, or injury to persons:

Always unplug this furnishing from the electrical outlet before cleaning or servicing.

1. Unplug from outlet before putting on or taking off parts.
2. **DO NOT OPERATE THIS EQUIPMENT UNLESS PROPERLY TRAINED.** Read this guide first.
3. Use this furnishing only for its intended use as described in these instructions. Do not use attachments not recommended by the manufacturer.
4. **DO NOT ALLOW USE BY CHILDREN** or people unable to understand the risks and to safely adjust the desk.
5. Never operate this furnishing if it has a damaged cord or plug, if it is not working properly, if it has been dropped or damaged, or dropped into water. Return the furnishing to a service center for examination and repair.
6. Keep the cord away from heated surfaces.
7. Remove and secure power cord when not in use to prevent children from operating the desk unsupervised.
8. Never drop or insert any object into any opening.
9. Do not use outdoors.
10. Do not operate where aerosol (spray) products are being used or where oxygen is being administered.
11. To disconnect, turn all controls to the off position, then remove plug from outlet.
12. Maximum intended load for work surface is 144lbs.
13. Use detachable, SJT, 18/3 AWG cord only, rated 300 V, 80 degree C min., with C5 cord connector and on NEMA 5-15P plug.

The desk or table shall be positioned near power socket and the plug shall be easily accessible.

GROUNDING INSTRUCTIONS (for grounded products only)

- For products sold in North America and other 120V regions: the product is for use on a nominal 120-V circuit.
- These products use a grounded plug that looks like the plug illustrated below.
- Make sure that the product is connected to an outlet having the same configuration as the plug.
- No Adapter should be used with this product.

Products with Grounded Plugs

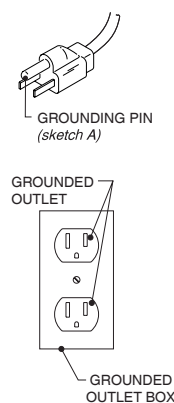
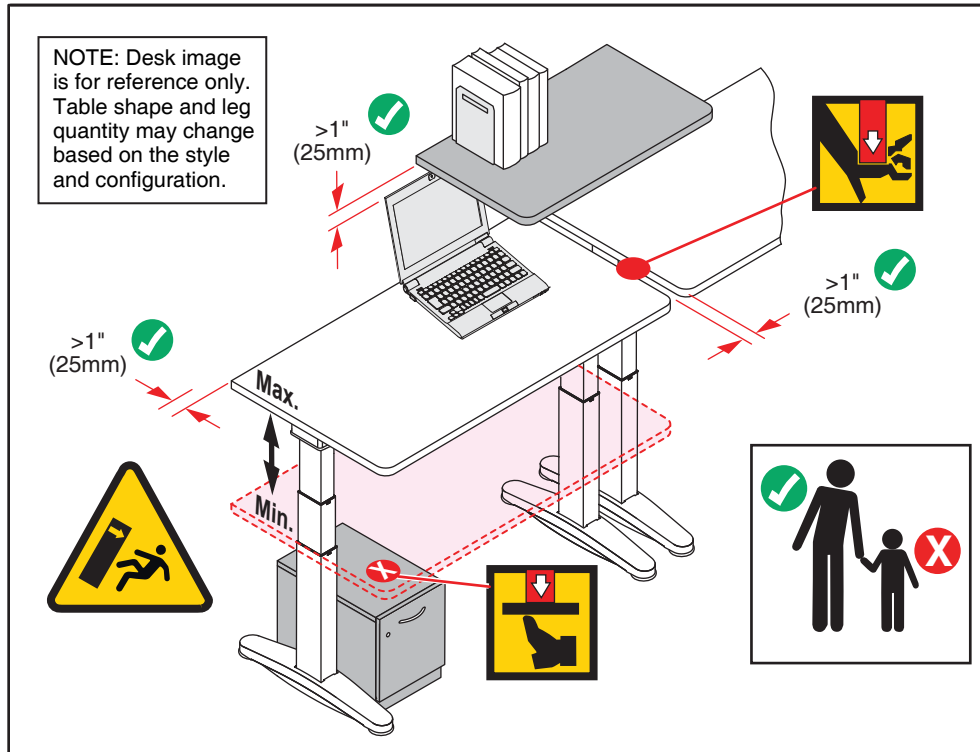


Figure 1
Grounding methods

⚠ WARNING

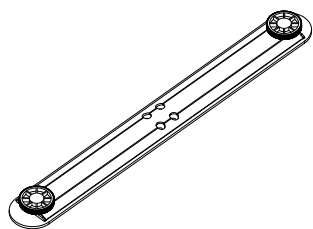
RISK OF SERIOUS INJURY DUE TO PINCH POINTS, TIPOVER, OR POTENTIAL COLLAPSE.

This powered, adjustable height desk appliance is not intended for use by persons (including children) with reduced physical, sensory or mental capabilities, or lack of experience and knowledge, unless they have been given supervision or instruction concerning use of the appliance by a person responsible for their safety. Children should be supervised to ensure that they do not play with the appliance.

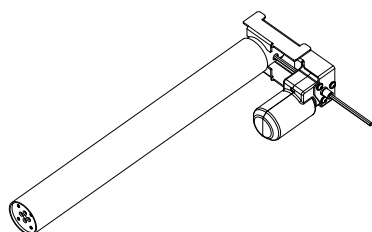


- **RISK OF DEATH OR SERIOUS INJURY.** Raising or lowering desk can trap, pinch or crush body parts or property.
 - **CRUSH HAZARD - DO NOT PLACE FEET, LEGS OR OTHER BODY PARTS ON OBJECTS PLACED UNDER TABLE TOP.**
 - **DO NOT OPERATE THIS EQUIPMENT** Unless Properly Trained.
 - **DO NOT ALLOW USE BY CHILDREN** or people unable to understand the risks and to safely adjust the desk height. Remove and secure power cord when not in use to prevent children from adjusting the desk unsupervised.
 - **INSPECT REGULARLY.** Stop using if product is damaged or has loose parts. Only repair with Manufacturer authorized parts and methods.
 - **MAINTAIN >1" (25mm) GAP ABOVE OBJECTS ON DESK AT MAX HEIGHT AND BETWEEN THE DESK & ADJACENT OBJECTS.**
Locate desk, accessories, and nearby objects to allow movement of desktop through full range without pulling cords, trapping body parts, or colliding with anything (shelves, electrical plugs and cords, door knobs, window sills, storage cabinets, etc.)
 - Always keep adequate clearance between desk and other objects.
- Risk of Tip-Over Injury.** Before moving:
- i. Adjust desk to lowest height.
 - ii. Verify path is clear of obstructions.
 - iii. Remove objects not attached to desk.
 - iv. Restrict monitor arms from moving outside desk perimeter.

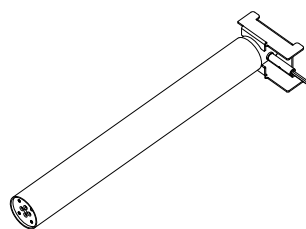
COMPONENTS



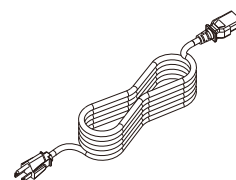
Foot
x 2



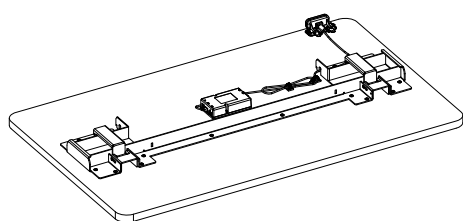
Column With Motor
x 1



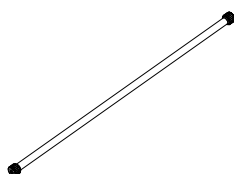
Column Without Motor
x 1



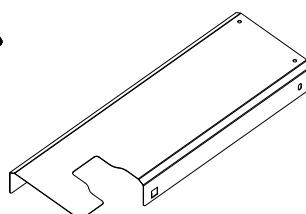
Power Cord
x 1



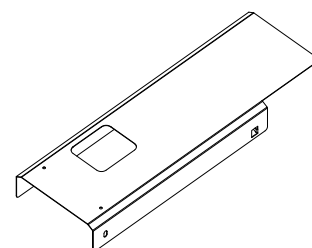
Preassembled part
(with frame, handset
preassembled
onto work surface)
x 1



Spindle
x 1



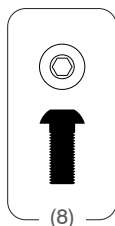
Cover / Wire Tray
(part A)
x 1



Cover / Wire Tray
(part B)
x 1

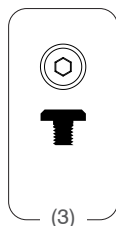
Hardware

M6 x 14

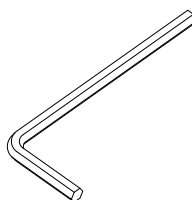


(8)

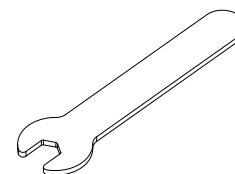
M5 x 6



(3)



4mm
x 1

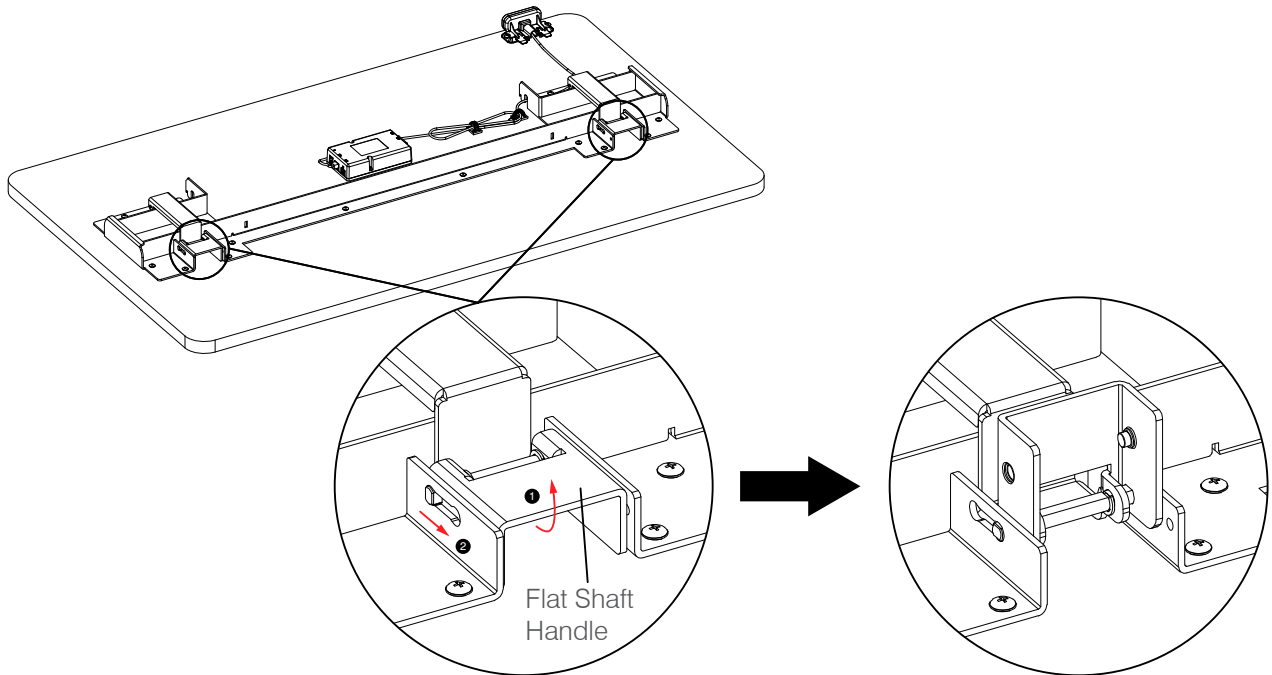


6mm
x 1

INSTALL COLUMNS ONTO FRAME

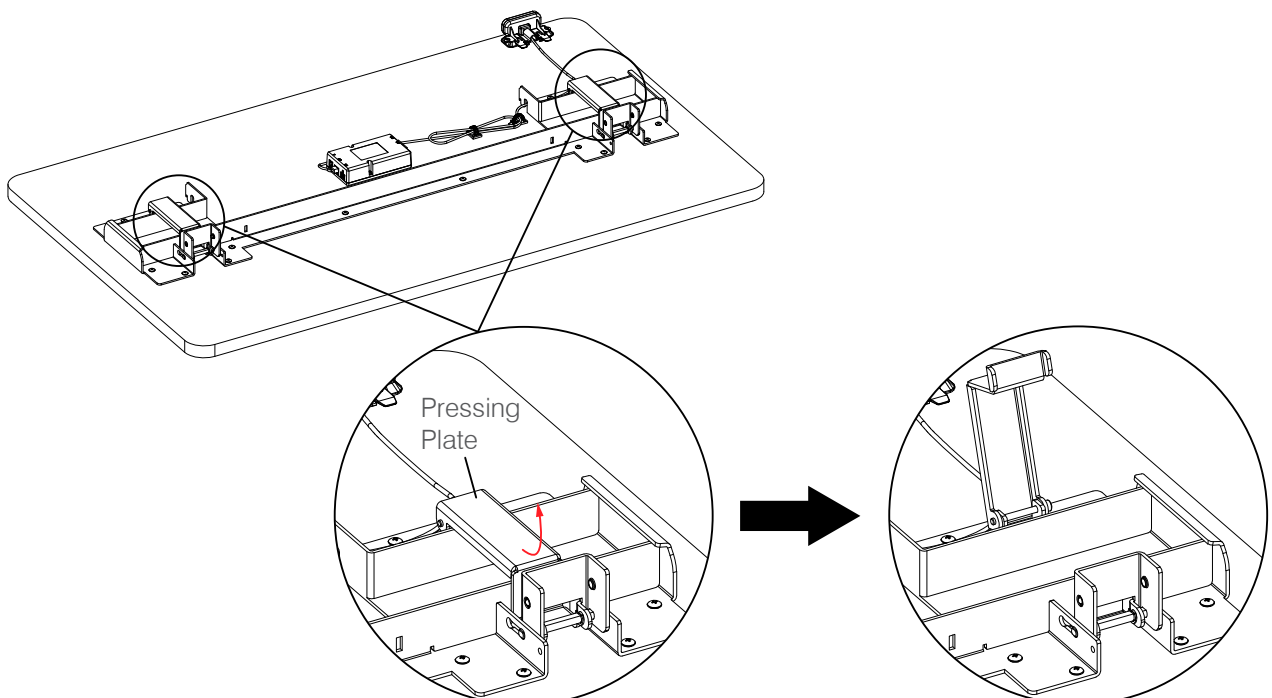
Step 1

Lift and release the Flat Shaft Handle



Step 2

With the Flat Shaft Handle up, lift the Pressing Plate up.

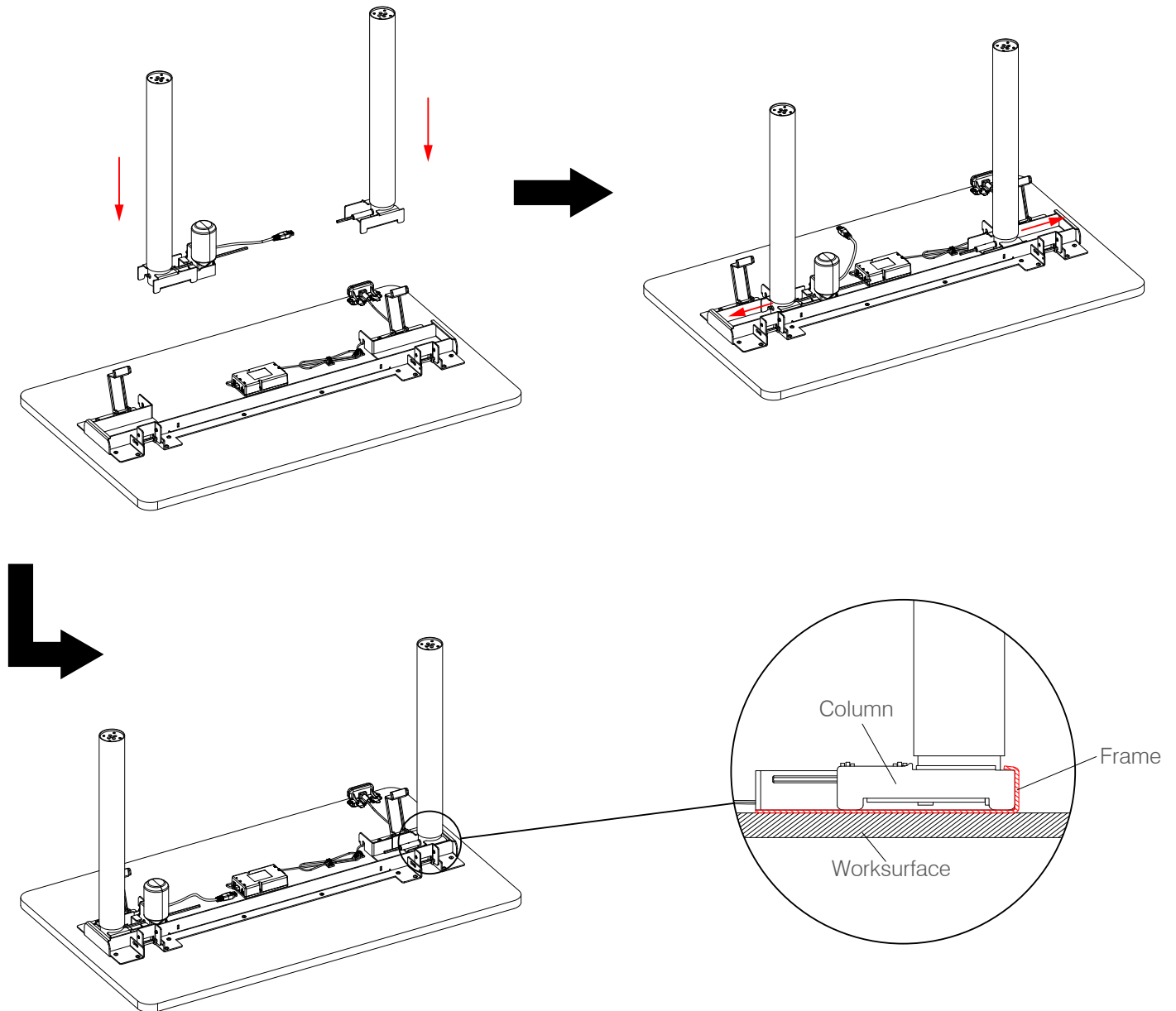


INSTALL COLUMNS ONTO FRAME

Step 3

Put the columns without the motor into the channel on the same side as the user handset. (Users right side of the desk). Put the Column with the motor into the channel on the other side. Slide both columns into channel towards edge of desk.

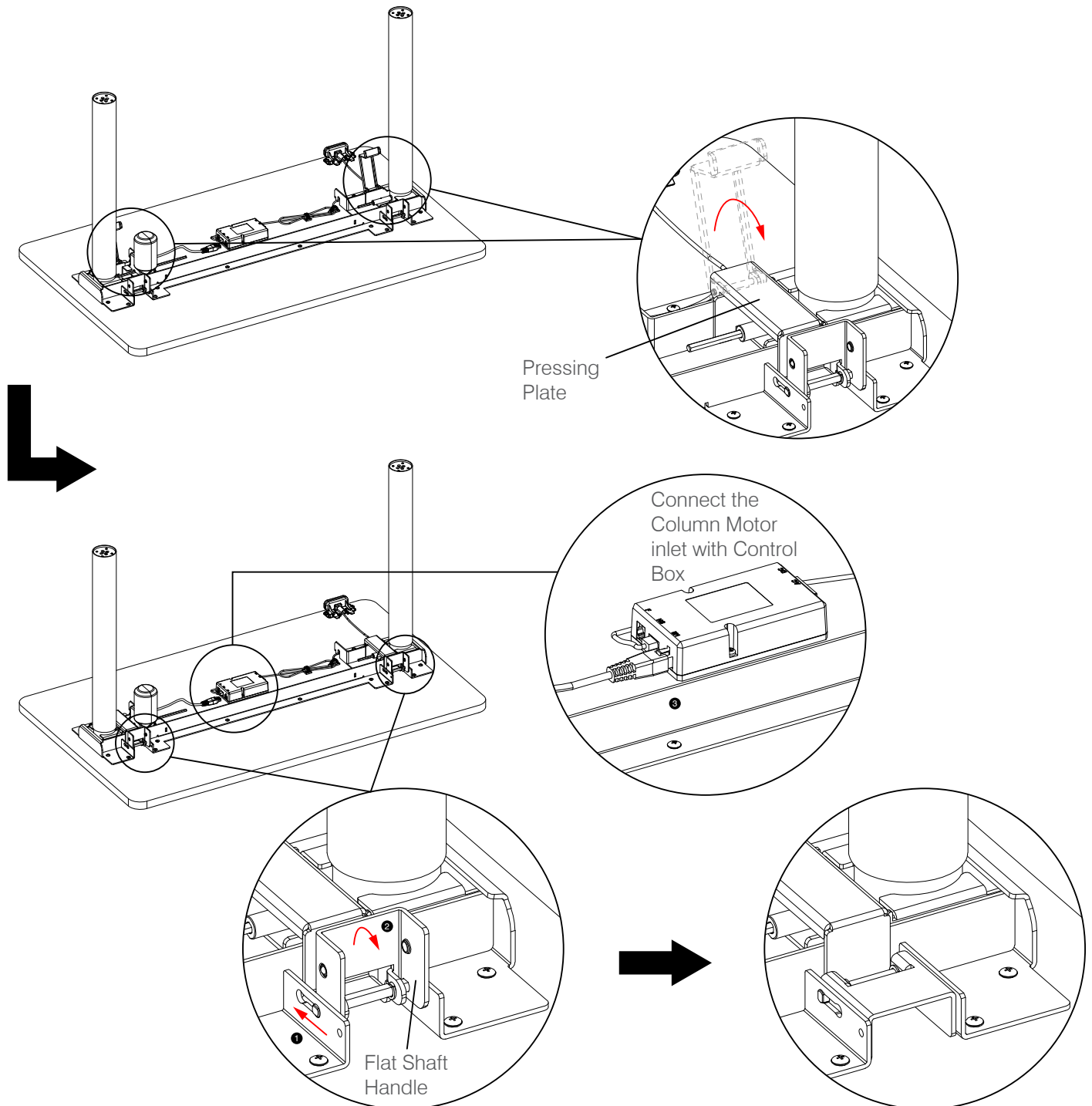
NOTE: make sure each column is secure under the looped faced edge of the frame.



INSTALL COLUMNS ONTO FRAME

Step 4

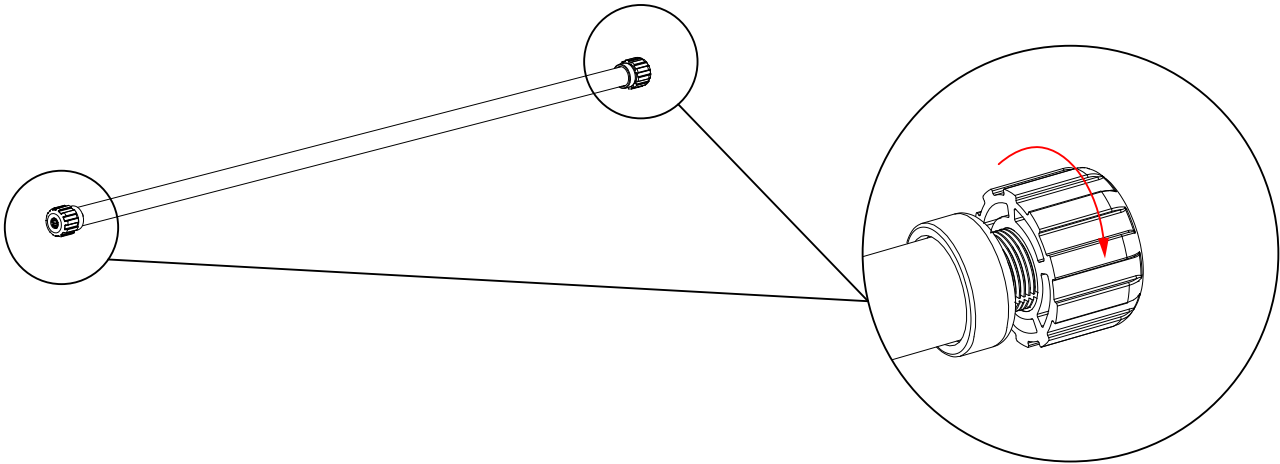
Once the Columns are in place, push the pressing plate down over the Columns. Slide the Flat Shaft Handle back over Pressing Plate and press down to lock Column in place. Next connect the Columns Motor Cable to the Control Box.



INSTALL THE SPINDLE ONTO FRAME

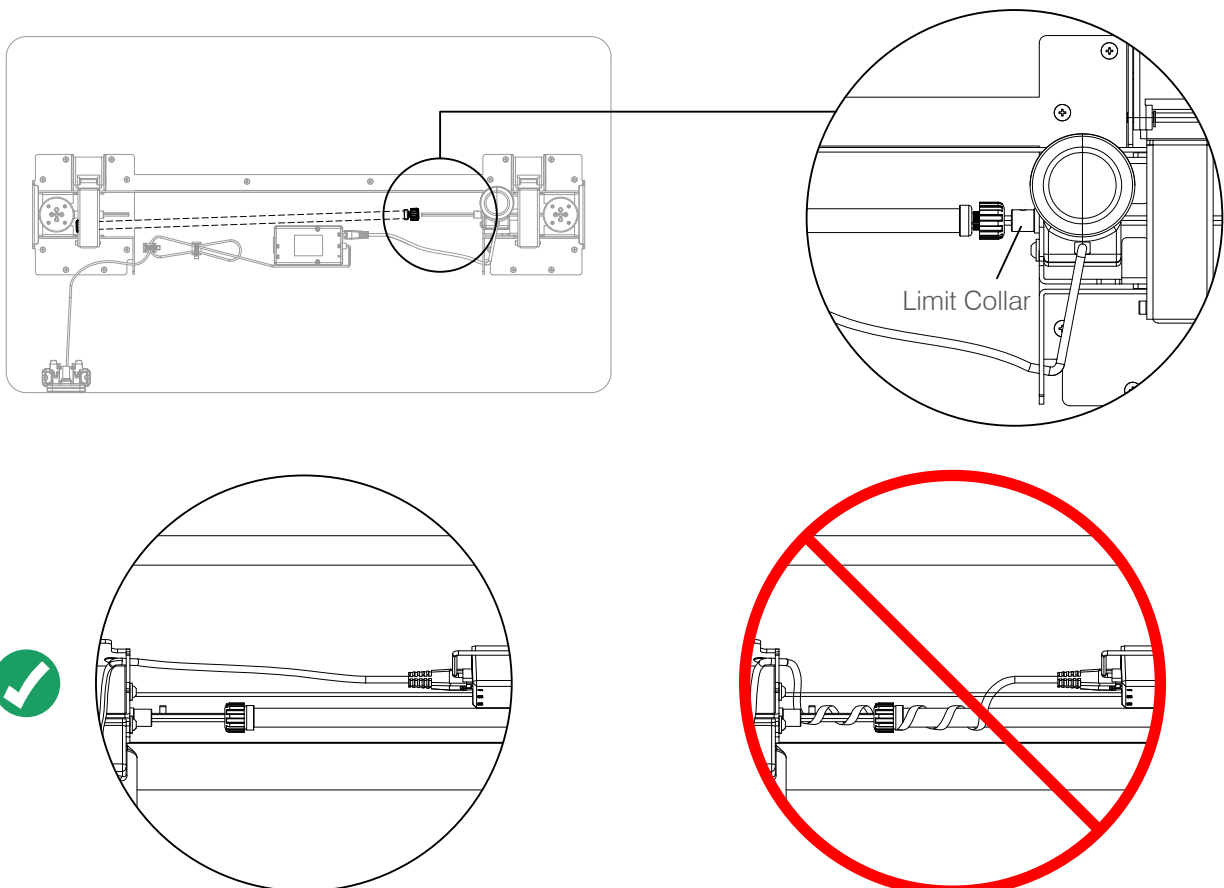
Step 1

Loosen the locking pieces at both ends of the Spindle first.



Step 2

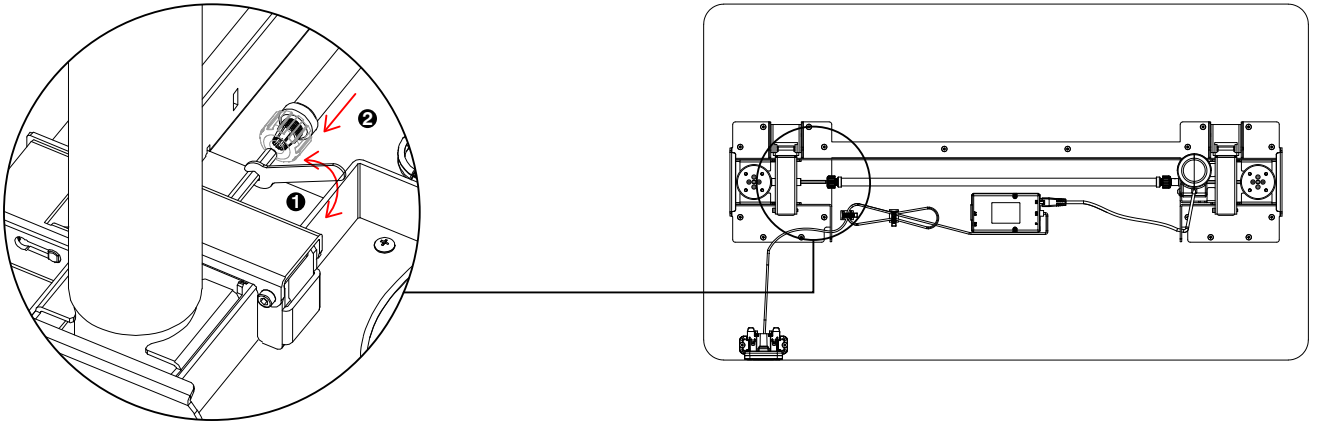
Insert the Spindle into the hexagonal rod on the Column with Motor until it can't be pushed any further and sits flush against the limit collar (note: don't tighten the locking piece yet).



INSTALL THE SPINDLE ONTO FRAME

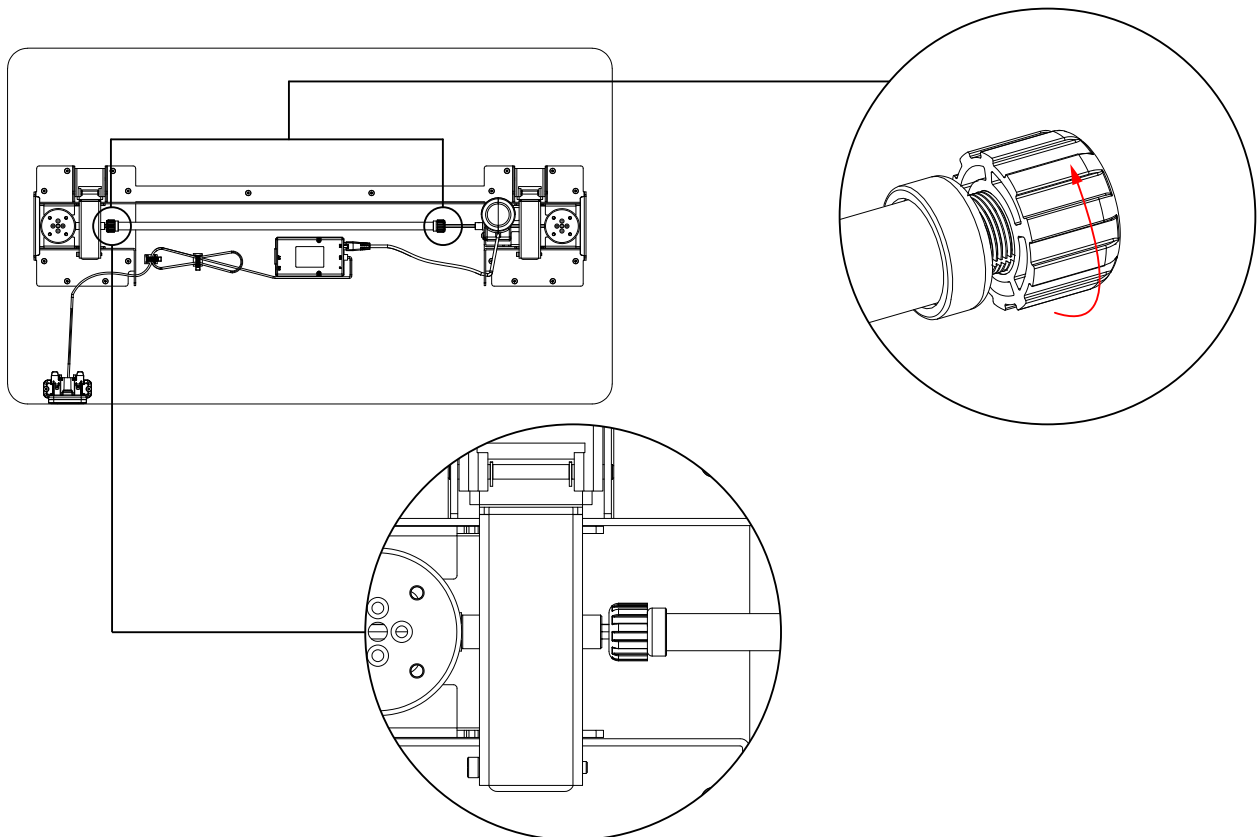
Step 3

Insert the spindle on the end to the hexagonal rod on the left column. If the angle of the spindle is misaligned, use an open-end wrench to adjust the hexagonal rod at one end.



Step 4

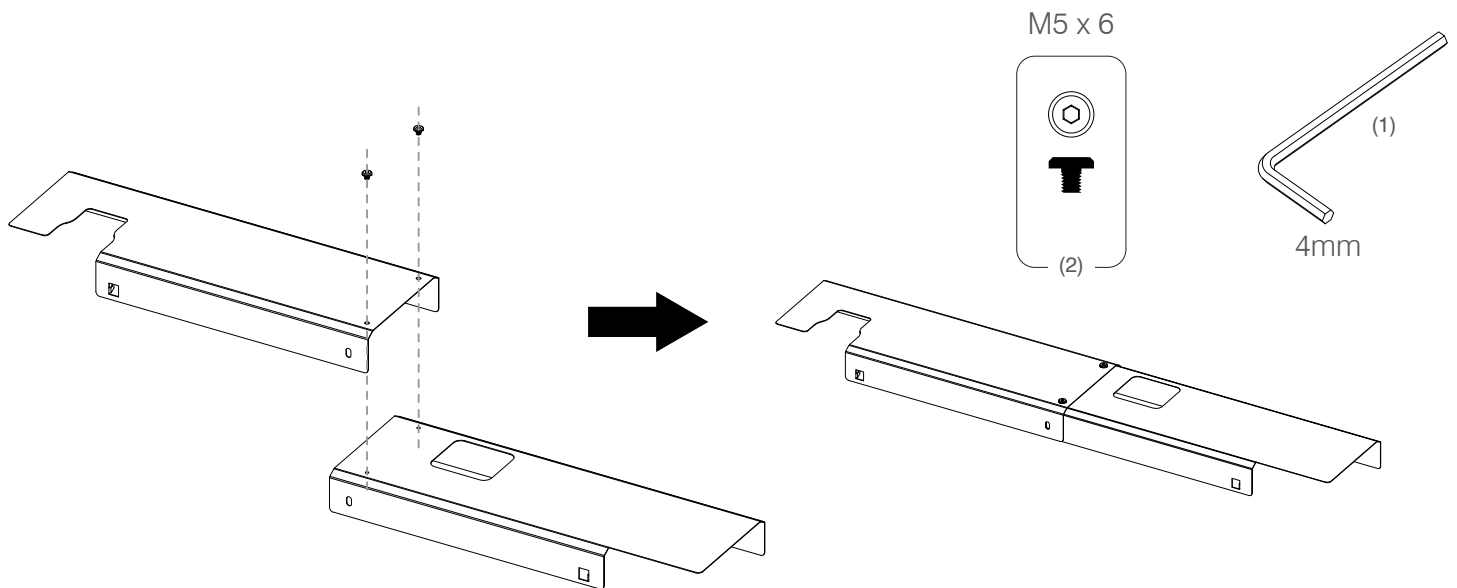
Adjust the position of the Spindle with it's end aligning with the limit collar on hexagonal rod of column without motor. Rotate the lock collar on both ends until the Spindle is fully locked.



COVER / WIRE TRAY ASSEMBLY

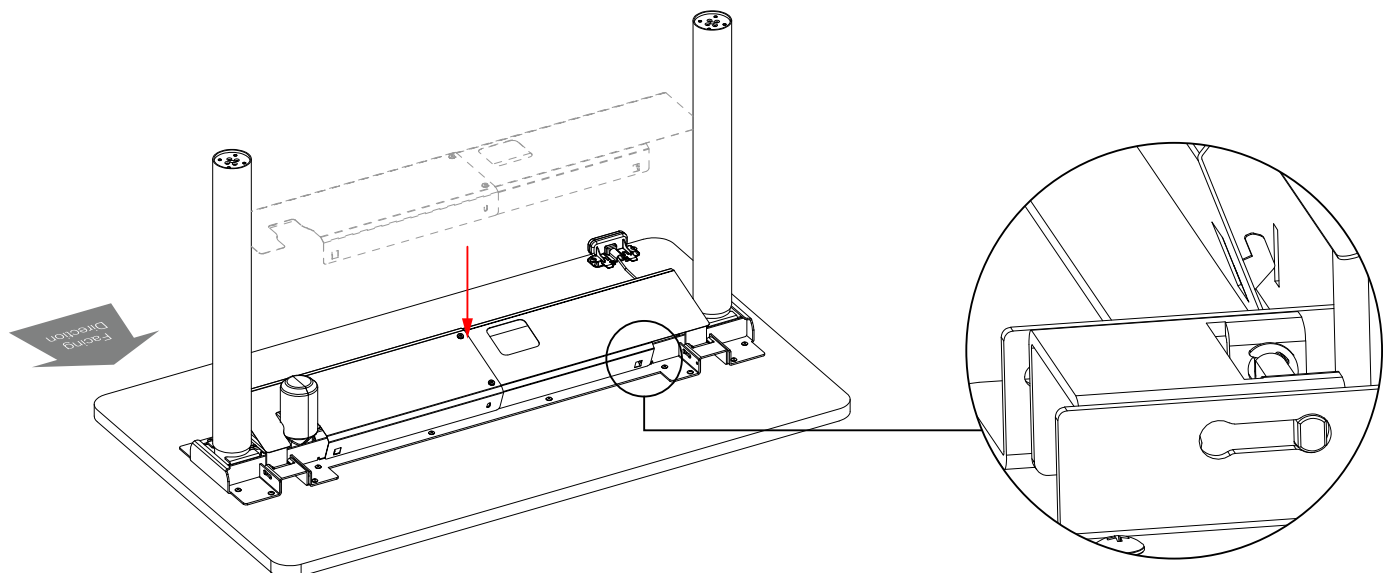
Step 1

Assemble 2 pieces of cover into one part by tightening 2 units of M5*6 screws.



Step 2

Adjust the cover so that the buckle fits into the square slot on the frame.



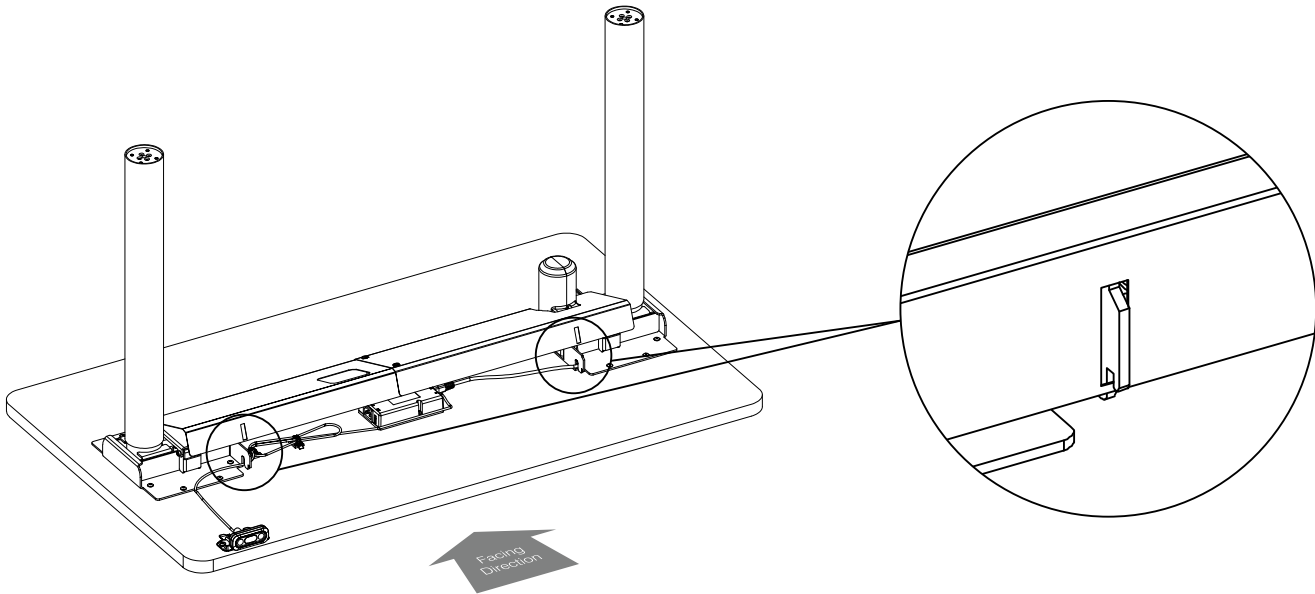
CAUTION

Risk of Injury. Hair can be caught and pulled by rotating parts.
Do NOT use without cover / wire tray installed.

COVER / WIRE TRAY ASSEMBLY

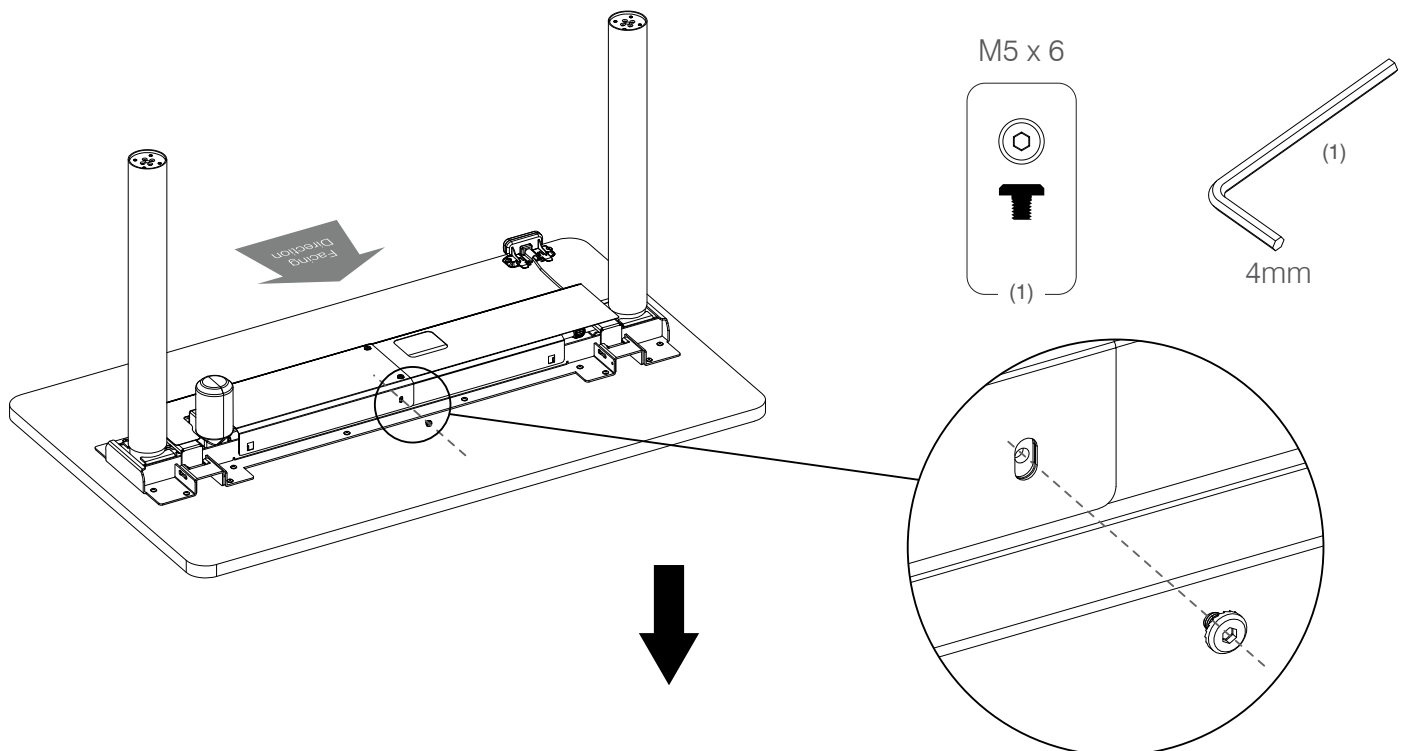
Step 3

Press both ends of the cover to make the square grooves on both sides snap into the buckles of the frame.

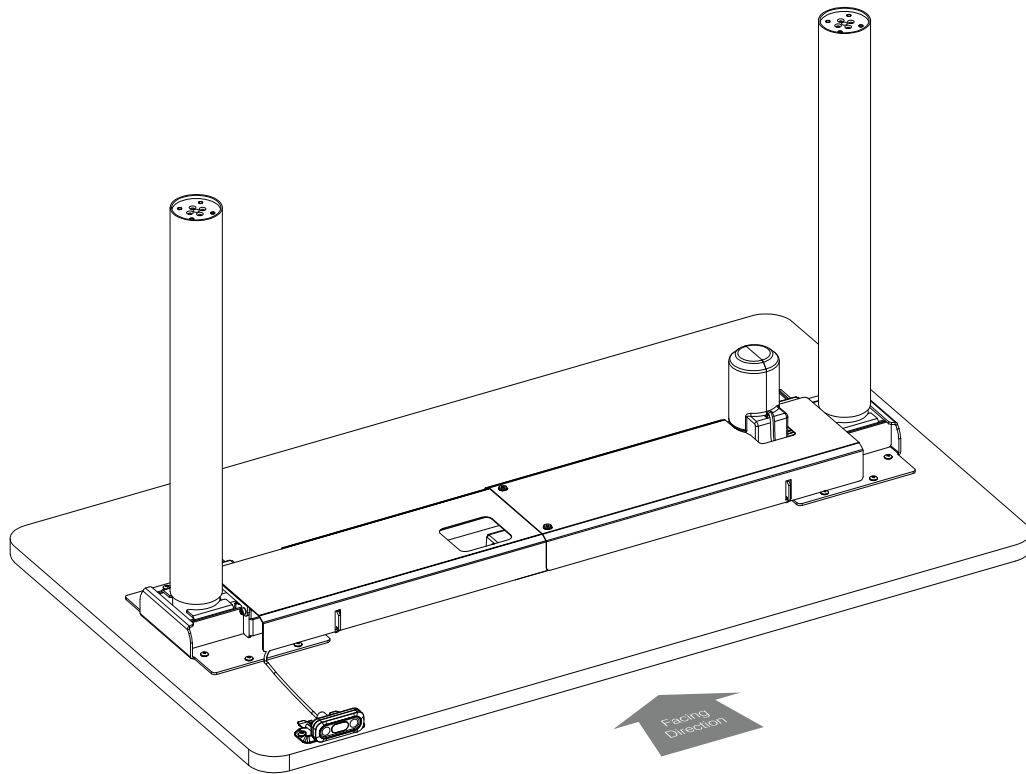


Step 4

Install cover onto frame by tightening 1 unit of M5*6 screw.



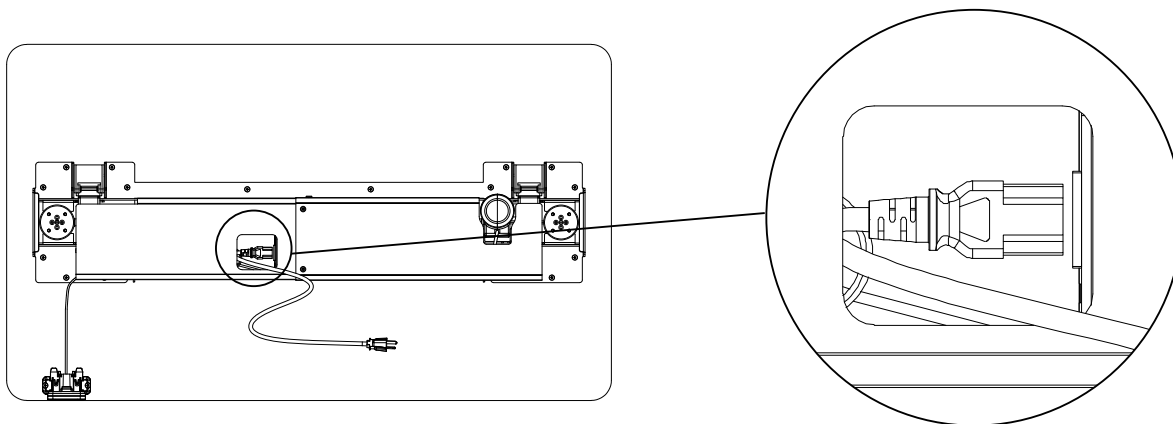
COVER / WIRE TRAY ASSEMBLY



Step 5

Connect the power cord to the control box.

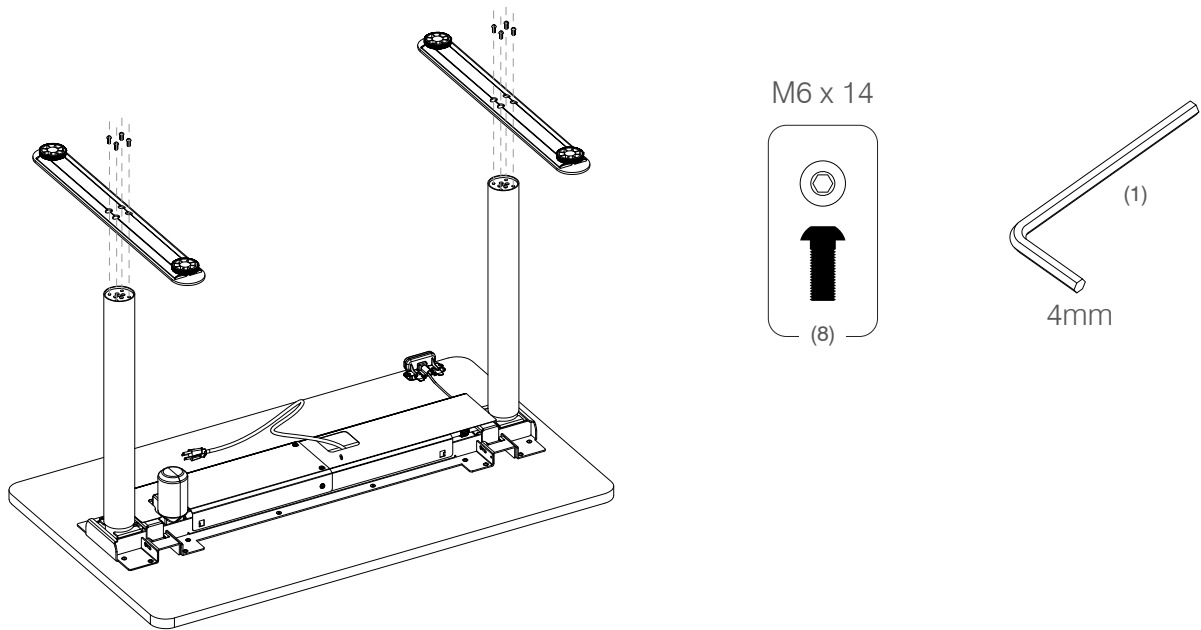
NOTE: make sure the cord for the hand switch is connected to the control box.



INSTALL THE FEET ONTO COLUMNS

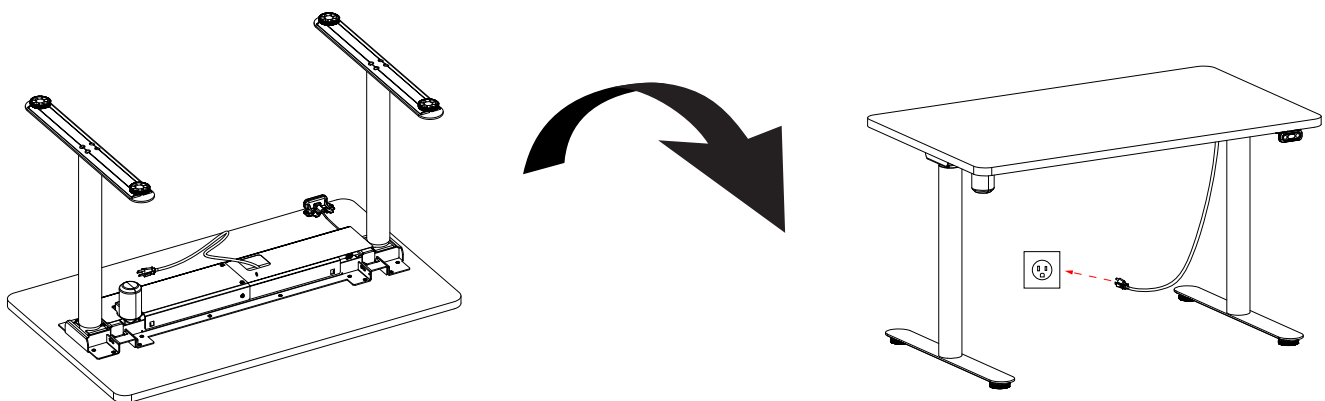
Step 1

Install the foot onto the column by tightening 8 units of M6*14 screws.



Step 2

Ensure that all power connectors have been correctly connected to the control box.
Flip the desk upright and connect to power source.





Handset is with up/down button and LED display for height in inches. Anti-collision default setting is 22lbs.

Power Saving Mode - Waking up the Handset

1. Press any button to wake up the Handset.

Resetting the Desk

! Note: Make sure there is nothing under the base before setting to its lowest height 28". If the desk is obstructed it will not reset properly.

1. Press and hold the DOWN arrow button and the desk will begin to go down.
2. Once the desk reaches its lowest height, continue to press the DOWN arrow button for 5 seconds, until the LED Display shows "RST".
3. Release and then press the DOWN arrow button again, the recalibration process will now begin.
4. When reset is completed, the LED Display will show 28".

TROUBLESHOOTING

If you are having trouble with your desk, try the simple steps outlined below. If problems persist, please contact Customer Care cc@amqsolutions.com.



Most issues will resolve by re-setting the base

See re-set instructions on previous page.



NOTE: Please make sure there is nothing under the base before setting to its lowest level 28". If the desk is obstructed it will not reset properly.

Please ensure that all connections are tight and in tact before further troubleshooting.

ISSUE	SOLUTION
ASR/RST Error Code	Reset the base.
No power/LED light on control box is off	The control box may be damaged – contact us for replacement.
E01/E02 Error Code (column overload protection, mechanism abnormal stop)	1. Reset the base. 2. Check the tightness of the cables/connectors if resetting the base does not work. 3. If the issue persists, please contact our Customer Care.
E07/E08 Error Code (signal feedback abnormal)	1. Reset the base. 2. Check the tightness of the cables/connectors if resetting the base does not work. 3. If the issue persists, please contact our Customer Care.
H01 Error Code (Controller Overheat)	Disconnect the power for 1 minute and then reconnect the handset.
Handset Display Error (eg, "88.8")	The handset may be damaged – please contact our Customer Care.

For questions or support, please contact Customer Care at cc@amqsolutions.com.

Cable Management

When installing equipment, either on the worksurface or below, be sure that the connecting cables are free from obstruction. This product offers a cable riser, cable brackets or a cable basket to help manage excess cables/wires on the underside of the worksurface.

Workstation Design Tips

- Ensure that power cords for all accessory items – computer, lights, monitors, etc. - are of sufficient length to reach outlets throughout the range of worksurface height adjustment is taking place.
- Always check for proper operating clearance before placing any item on, above or below the worksurface.

Maintenance and Cleaning

Regularly clean dust and dirt from lifting columns. To ensure all surfaces are thoroughly cleaned, make sure the lifting columns are fully extended to their maximum height. Also, be sure to inspect cables and lifting columns for damage. Check all connections for both correct function and secure mounting.

NOTE: Damp cloth is recommended. To protect the painted surfaces, use a cleanser that is not highly alkaline or acidic. A pH-neutral product is ideal.

NOTE: Please do not move the desk without help. Refer to the guidelines at the end of the assembly instructions or contact your facilities group for assistance.

PRODUCT SPECIFICATIONS

Product Overall Height Adjustment Range	28" (710mm) - 47.2" (1200mm)
Handset	up/down buttons with led display
Feature	Anti-Collision
Columns	2-Stage
Worksurface Thickness	1"
Worksurface Width	47.5"
Worksurface Depth	28"
Worksurface Maximum Capacity	144 lbs (65.5kg)
Volts	120V AC
Watts	150W (Maximum)
Frequency	60Hz
Standby Consumption	0.2W
Speed	1.1"/s (28mm/s)
Total Stroke	19.2" (490mm)
Decibel Rating	≤50db
Duty Cycle	10% - 2 minutes on/ 18 minutes off
Worksurface Weight	32 lbs (14.5kg)
Compliance	BIMFA X5.5-2021, SOHO S6.5-2008(R2013) UL962 Listed, CSA 22.2 No. 68 certified
Environmental	SCS IAQ Gold



This device complies with part 15 of the FCC rules. Operation is subject to the following two conditions: (1) This device may not cause harmful interference, and (2) this device must accept any interference received, including interference that may cause undesired operation.

This equipment has been tested and found to comply with the limits for a class B digital device pursuant to Part 15 for FCC rules. These limits are designed to provide reasonable protection against harmful interference in a residential installation. This equipment generates, uses and can radiate radio frequency energy and, if not installed and used in accordance with the instructions, may cause harmful interference to radio communications. However, there is no guarantee that interference will not occur in a particular installation. If this equipment does cause harmful interference to radio or television reception, which can be determined by turning the equipment off and on, the user is encouraged to try to correct the interference by one or more of the following measures: Reorient or relocate the receiving antenna. Increase the separation between the equipment and receiver. Connect the equipment into an outlet or a circuit different from that to which the receiver is connected. Consult the dealer or an experienced radio/TV technician for help.

Important: Changes or modifications to this product not authorized by Manufacturer could void your authority to operate the product.

Please contact cc@amqsolutions.com if you are missing any parts, have difficulty with assembly, or have any product related questions.