



# Tru-Form™ 3150

## Wireless Ergonomic Mini Trackball Keyboard



Model: WKB-3150UB

# QuickGuide

English

www.adesso.com

## CONTENTS



A

Wireless Keyboard



B

Wireless Receiver



C

AAA Batteries (2)



D

Quick Start Guide

## KEYBOARD DESCRIPTION (FRONT)

### Multimedia Hotkeys

Play/Pause, Stop, Previous Track, Next Track, Volume down, up & Mute

Scroll Lock, Pause/Break, Num Lock



Indicators

Num Lock, Caps Lock, Battery Low

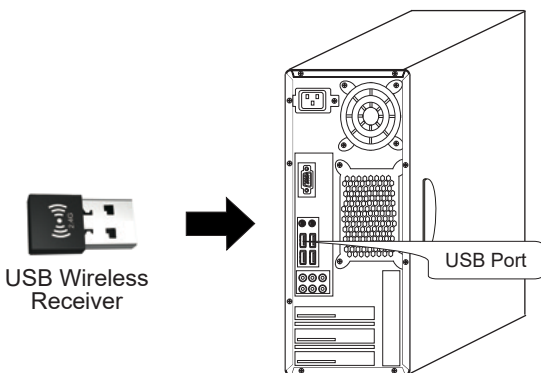
Built-in Trackball

Mouse Buttons

Built-in Scroll Wheel

④

2. Turn ON your computer and let Windows load completely.
3. Plug the USB Wireless Receiver into the USB port of your computer



4. Receiver will automatically connect with wireless keyboard and ready to use. Windows will detect the driver automatically. No driver required.

⑦

## LIMITED WARRANTY

Adesso provides a one year limited warranty for all of its products against defects in material and workmanship.

During this period, Adesso will repair or replace any product which proves to be defective. However, Adesso will not warranty any product which has been subject to improper freight handling, shipping abuse, neglect, improper installation or unauthorized repair. The warranty will not cover products installed with components not approved by Adesso and products where the sealed assembly trace has been broken.

If you discover a defect, Adesso will, at its option, repair or replace the product at no charge to you provided you return it during the warranty period with freight charges pre-paid to Adesso. Before returning any product, you must obtain a Return Merchandise Authorization number (RMA). This RMA # must be clearly marked on the outside of the package you are returning for warranty service. Be certain to also include your name, shipping address (no PO Boxes), telephone number, and a copy of the invoice showing proof of purchase in the package.

## SUPPORT

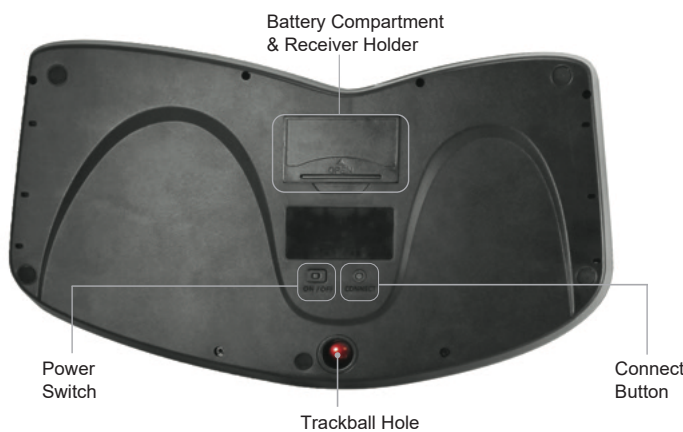
We have listed most of our FAQ's (Frequently Asked Questions) at: <http://www.adesso.com/faqs.asp>. Please visit our FAQ Service & Support pages before you contact our E-mail or Telephone Support.

**Email Support:** If our FAQ's do not help you resolve your issues, please email [support@adesso.com](mailto:support@adesso.com)

**Telephone Support:**  
Toll Free: (800) 795-6788  
9:00AM to 5:00PM PST Monday - Friday

②

## KEYBOARD DESCRIPTION (BACK)



Battery Compartment & Receiver Holder

Power Switch

Trackball Hole

Connect Button

## HOTKEY DEFINITIONS

Key	Action	Description
▶/	Play/Pause	Play or pauses track in multimedia software
■	Stop	Stops track from playing in multimedia software
◀◀	Previous Track	Takes you to previous track in multimedia software
▶▶	Next Track	Takes you to next track in multimedia software
🔊	Volume Down	Decreases computer main volume
🔊	Volume Up	Increases computer main volume
🔊 X	Mute	Mutes computer main volume

⑤

## TROUBLESHOOTING

If wireless keyboard cannot be operated, please try the following:

1. Make sure you have inserted two AAA batteries inside the battery compartment correctly. Switch keyboard to ON.
2. Make sure you have connected the USB receiver correctly to the computer's USB ports. Move the keyboard 1 foot away from the receiver in order to avoid interference while pairing connection.
3. Press CONNECT once on the bottom of keyboard within 15 seconds after plugging USB receiver to computer.

**Note:** Wireless phone, routers and other devices that uses 2.4GHz frequency, might cause interference with wireless keyboard. Please relocate such wireless appliances away from your keyboard.

How to turn the numlock key off on this keyboard when typing the numbers keep coming up instead of letters?

1. User needs to press FN+F12 simultaneously to enable and disable the Numlock function.

⑧

## INTRODUCTION

Adesso® Tru-Form Media 3150 - Wireless Ergo Mini Trackball Keyboard offers users a keyboard with an ergonomic design, built-in trackball for easy and comfortable browsing, multifunctional features and a wireless range of up to 30 feet. The WKB-3150UB was designed with the split key zones and sloped shape to make typing feel natural and effortless due to the natural position of hands, wrists, and forearm in maximum comfort and long use. Plus, the built in trackball not only enhances your web browsing experience and comes with precise navigation, but it can also be removed for occasional maintenance and cleaning. The trackball is also just a fingertip away, so no need to reach for your mouse or even move your hand from its natural positioning. The built-in Multimedia Hotkeys bring quick, easy access to your Multimedia tools. The mini-size of the keyboard makes adds portability and is clutter-free, while adding ergonomic comfort.

## SPECIFICATIONS

- Connection: 2.4GHz Radio Frequency Wireless Technology
- Wireless Working Range: Up to 30 feet (10 m)
- Battery Type: (2) AAA Batteries
- Keyboard Layout: 87-Key US
- Key Type: Membrane
- Hotkeys: 7 Hotkeys (Play/Pause, Stop, Previous & Next Track, Mute, Volume Up & Down)
- Indicators: Battery Low, Num Lock & Caps Lock
- Dimensions: 13.8" x 9.4" x 1.5" (350 x 239 x 38 mm)
- Weight: 1.75 lbs (800 g)

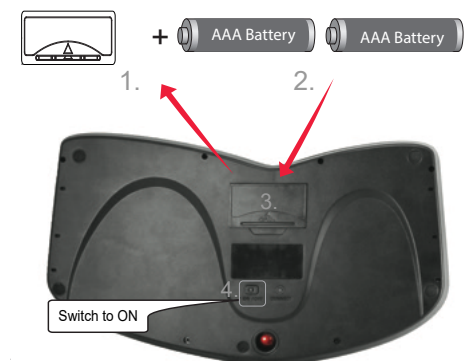
## REQUIREMENTS

- Operating System: Windows® 2000/ 10/ 8/ 7/ Vista/ XP
- Connectivity: USB for Wireless Receiver

③

## INSTALLATION

1. Remove battery cover from keyboard battery compartment.
2. Insert (2) AAA batteries into keyboard.
3. Close the battery compartment cover.
4. Turn the power switch to **ON**.



⑥

## TIPS:

- When the Battery Low LED is ON, it means that the device requires to change the batteries.
- We suggest to turn “**OFF**” the keyboard when leaving your desk for more than an hour to save battery life for longer lasting use.
- The built in trackball can also be removed for occasional maintenance and cleaning. To remove the trackball:

1. Flip the keyboard to its back on a flat surface.
2. Locate the hole where the trackball is enclosed, and use a pen to apply pressure to “pop out” the trackball.



⑨