

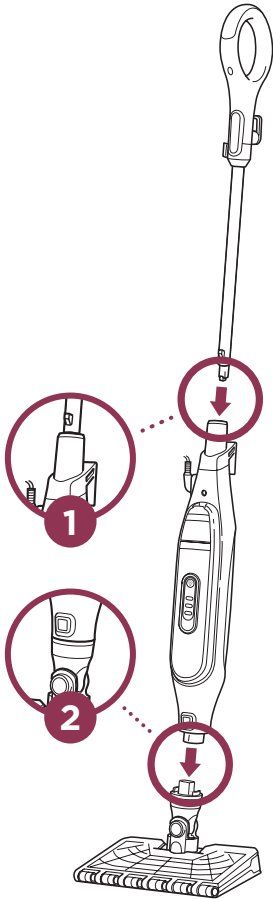
Please be sure to read the enclosed Shark® Owner's Guide prior to using your unit.

Shark GENIUS™

STEAM POCKET® MOP
With Intelligent Steam Control®

QUICK START GUIDE

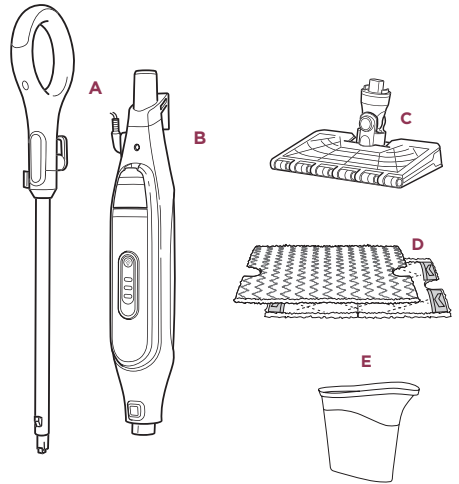
ASSEMBLY



1. Insert the Steam Mop handle into the Steam Mop body. Push the handle in until it clicks securely into place.
2. Slide the Genius Mop Head into the Steam Mop body. Push until it clicks securely into place.

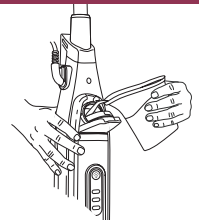
WHAT'S INSIDE

- A Steam Mop Handle
- B Steam Mop Body
- C Genius Mop Head
- D Dirt Grip™ Pad (x2)
- E Filling Flask



FILLING THE WATER TANK

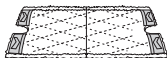
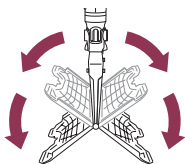
1. Pull down on the water tank cap to open.
2. Use the filling flask to pour water into the tank. Do not overfill. Press the water tank cap firmly to close it.



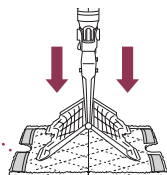
ATTACHING THE PAD



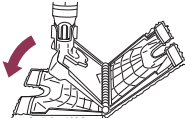
Release Button



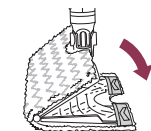
1. Lift the mop straight up by the handle until the Genius Mop Head is hanging straight down. Center the Genius Mop Head above the pad. Press the release button on the back of the mop body, and both sides of the mop head will drop open.



2. Slip the mop head's 4 corner tabs into the 4 corner pockets of the Dirt Grip™ Pad.



3. Gently press the Genius Mop Head to the floor on one side of the pad, and that side will click into place.



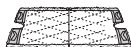
4. Flip the other side of the head over onto the floor to click into place.

REMOVING THE PAD

Lift the mop straight up by the handle until the Genius Mop Head is hanging straight down. Press the pad release button, and both sides of the head will drop open, releasing the pad.

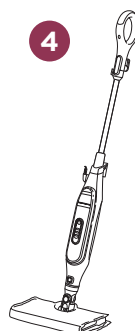
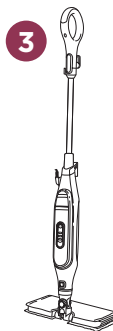
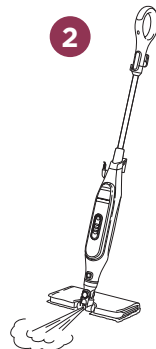
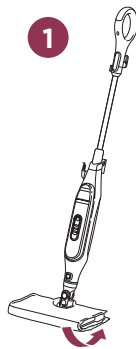


Release Button



When you need an extra burst of steam to clean tough, dried messes and stuck-on stains, use the Steam Blaster.

1. Flip the Genius™ Mop Head over so that it is behind the mop body.
2. Tilt the mop handle back. This will cause the Steam Blaster to emit a concentrated blast of steam onto the floor.
3. To stop the Steam Blaster spray, simply tilt the mop handle forward.
4. Flip the Genius Mop Head back into its original position and continue cleaning.



REMOVING THE MOP HEAD

Press the release button on the front of the mop body, unlocking the Genius Mop Head.



Release Button