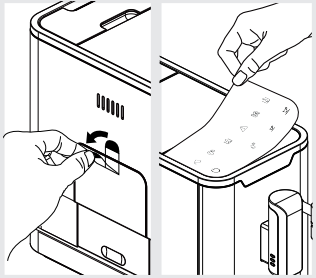
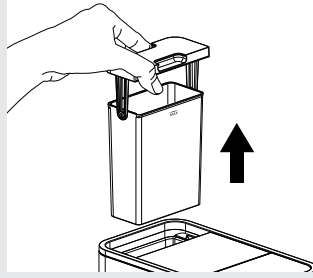


# Quick Start Guide

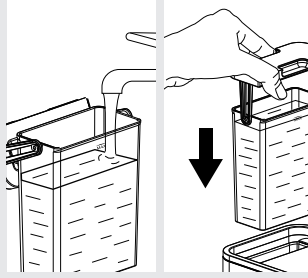
## Before First Use



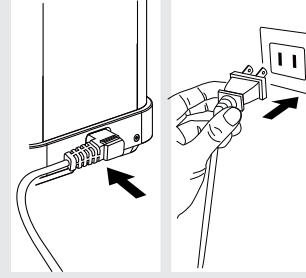
Remove all the tapes.



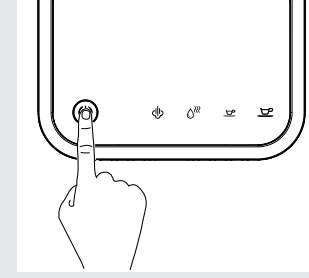
Use the integrated handle on the lid to lift the water tank.



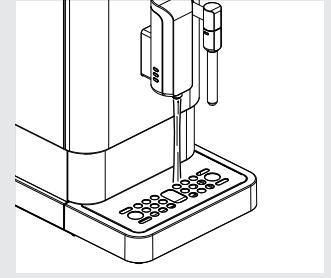
Fill the tank to "MAX" level then place the water tank into the machine.



Connect the power cord to the mains supply outlet.

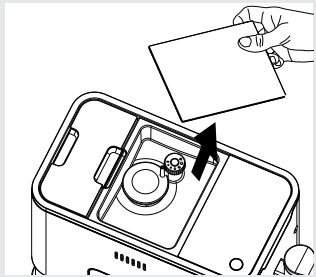


Press the power ON/OFF button to switch on the appliance.

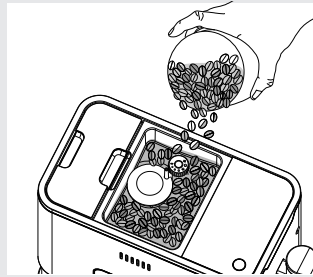


There is automatic rinsing process after switch on the appliance.

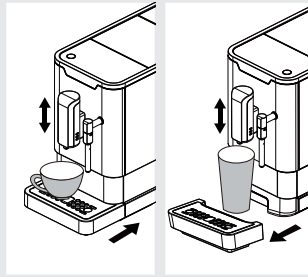
## Operation for serving coffee and frothy milk



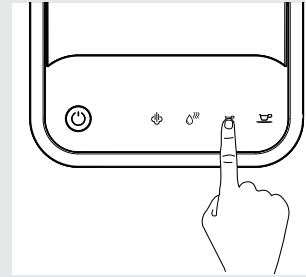
Remove the coffee bean container lid.



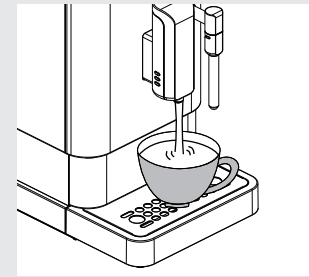
Fill the coffee bean container with coffee beans, put the coffee bean container lid back.



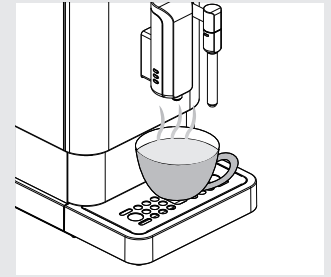
Place a cup under the coffee spout, adjust the position of the coffee spout or remove the drip tray to suit different sizes of cup.



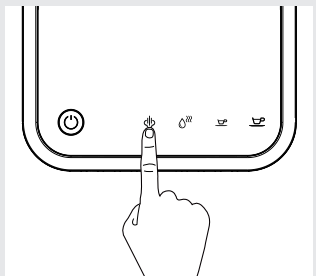
Select your coffee, press "Espresso" or "Lungo" button once.



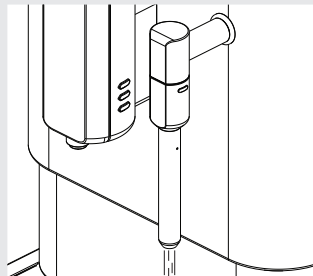
Coffee will come out from the coffee spout.



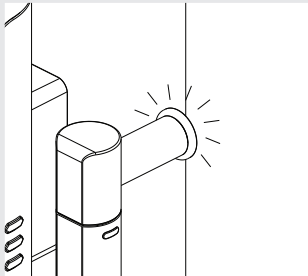
When the appliance resumes to standby condition, the coffee is ready to serve.



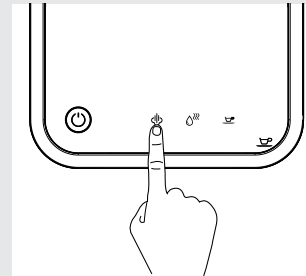
Press the steam button.



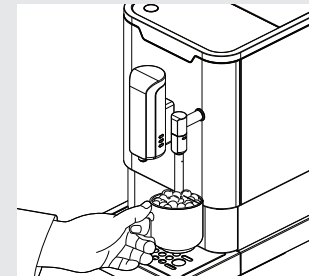
Steam Indicator will flash for heating up and draining residual water into the drip.



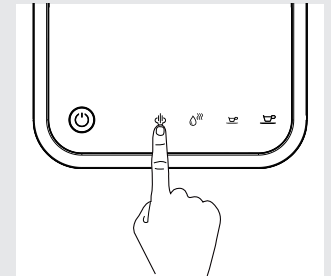
Steam Indicator stop flashing and stay on.



Press steam button for frothing the milk.

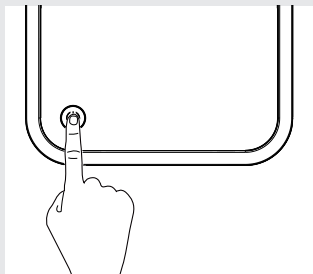


Place a container of milk under steam nozzle.

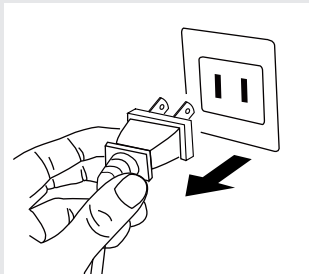


Press steam button again to stop the steam when milk froth is hot.

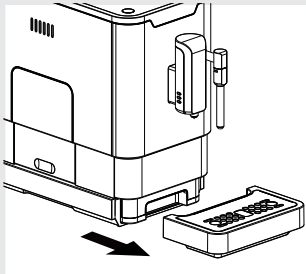
# Cleaning



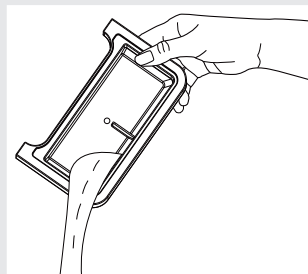
Press the power ON/OFF button to switch off the appliance.



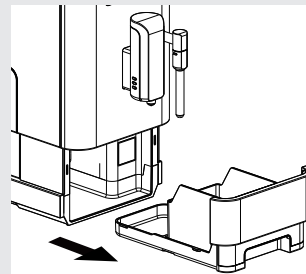
Disconnect the power cord from the mains supply outlet.



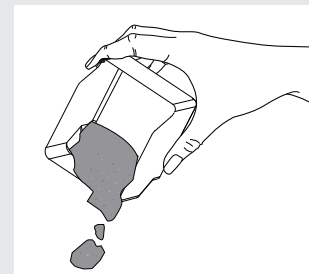
Remove the external drip tray.



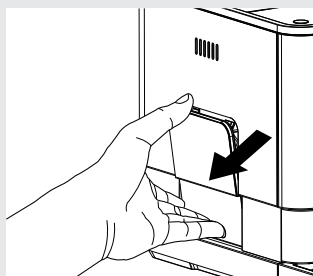
Drain the drip tray.



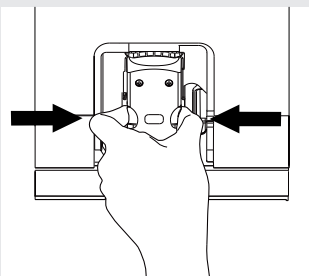
Pull out the internal drip tray and the coffee grounds container.



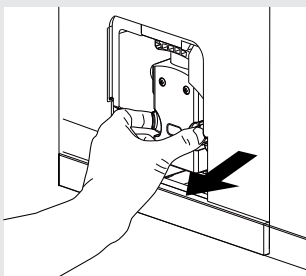
Empty the coffee grounds container and wash it with fresh water.



Push the recess area to remove the service door.



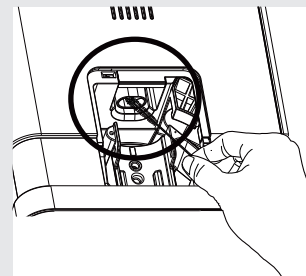
Press the release buttons.



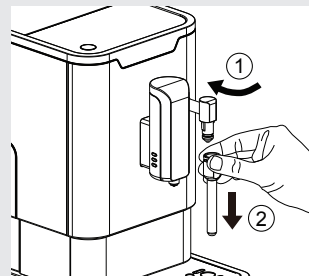
Remove the brewer.



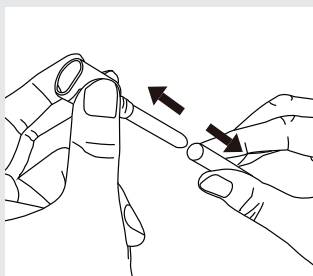
Wash the brewer with fresh water.



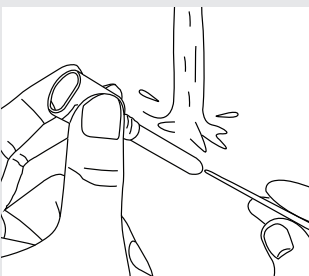
Use cleaning brush to clean the coffee grounds outlet.



Disassemble the nozzle by rotating counterclockwise and pulling downwards.



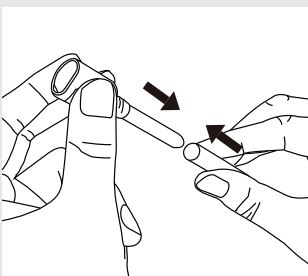
Disassemble the steam tube and nozzle.



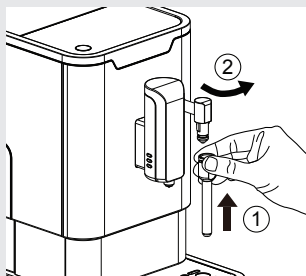
Clean the steam tube with fresh water and use needle or brush hair to clean the hole.



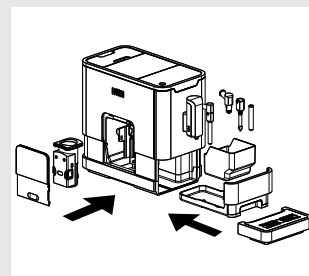
Use needle or brush hair to clean the small hole of side nozzle.



Assemble the steam tube and nozzle.



Assemble the steam nozzle to the appliance.



After all the cleaning processes, replace all the units to original position.