

DVE51CG8000

7.5 cu. ft. Smart Electric Dryer with Sensor Dry

SAMSUNG



Available Colors

Brushed Black
DVE51CG8000V

White
DVE51CG8000W

Features

- Sensor Dry
- Wi-Fi Connectivity with SmartThings¹
- Large 7.5 cu. ft. Capacity
- Interior Drum Light
- Reversible Door
- Lint Filter Indicator
- Smart Care
- Flexible Installation
- ADA Compliant²
- 12 Preset Drying Cycles
- 10 Options
- 5 Temperature Settings
- Accessibility (AUI, Braille)
- 4-Way Venting (Back, Bottom, Left, Right)

Convenience

- Child Lock
- Lint Filter Indicator

Ratings

644 kWh/yr

Electrical Requirements

240 V / 60 Hz
30 Amps

Specifications

- 12 Preset Drying Cycles:**
Normal, Heavy Duty, Permanent Press, Activewear, Bedding, Delicates, Sanitize, Time Dry, Air Fluff, Quick Dry, Wrinkle Release, Downloaded
- 7 Downloadable Drying Cycles:**
Eco Normal, Towels, Wool, Shirts, Denim, Low Temp, Rack Dry
- 10 Options:**
Damp Alert, Wrinkle Prevent, Smart Control, Adjust Time (Up), Adjust Time (Down), Eco Dry, Sound Off, Drum Light, Smart Care, Child Lock
- 5 Temperature Settings:**
High, Medium High, Medium, Medium Low, Low

- 5 Dry Levels:**
More Dry, Normal-More Dry, Normal Dry, Normal-Less Dry, Less Dry
- Warranty**
One (1) Year Parts and Labor
- Product Dimensions & Weight (WxHxD)**
Dimensions: 27" x 38³/₄" x 31¹¹/₁₆"
Weight: 119.0 lbs
- Shipping Dimensions & Weight (WxHxD)**
Dimensions: 29³/₈" x 42⁹/₁₆" x 34¹¹/₁₆"
Weight: 125.7 lbs

Electric Dryer	Model #	UPC Code
Brushed Black	DVE51CG8000V	887276783550
White	DVE51CG8000W	887276783567
Gas Dryer		
Brushed Black	DVG51CG8000V	887276783598
White	DVG51CG8000W	887276783604
Matching Washer		
Brushed Black	WF51CG8000AV	887276785295
White	WF51CG8000AW	887276785301

Optional Accessories	Model #	UPC Code
Brushed Black/Black Stainless Steel Pedestal	WE402NV	887276310145
White Pedestal	WE402NW	887276310152
Brushed Black/Black Stainless Steel Riser	WE272NV	887276197630
White Riser	WE272NW	887276197647
Stacking Kit	SKK-8K	887276344034
Vent Kit	DV-2A	887276146416

¹Requires wireless network, Samsung account and SmartThings App. The Samsung SmartThings App supports Android OS 4.0 (ICS) or later which is optimized for Samsung smartphones (Galaxy S and Galaxy Note series). This app also supports iOS 7 or later for iPhone models. SmartThings App available in App Store and Play Store. Only monitoring enabled on Gas Dryers for safety reasons.

²ADA Compliant when using 27" wide riser. (Riser model codes: WE272NV, WE272NWC)

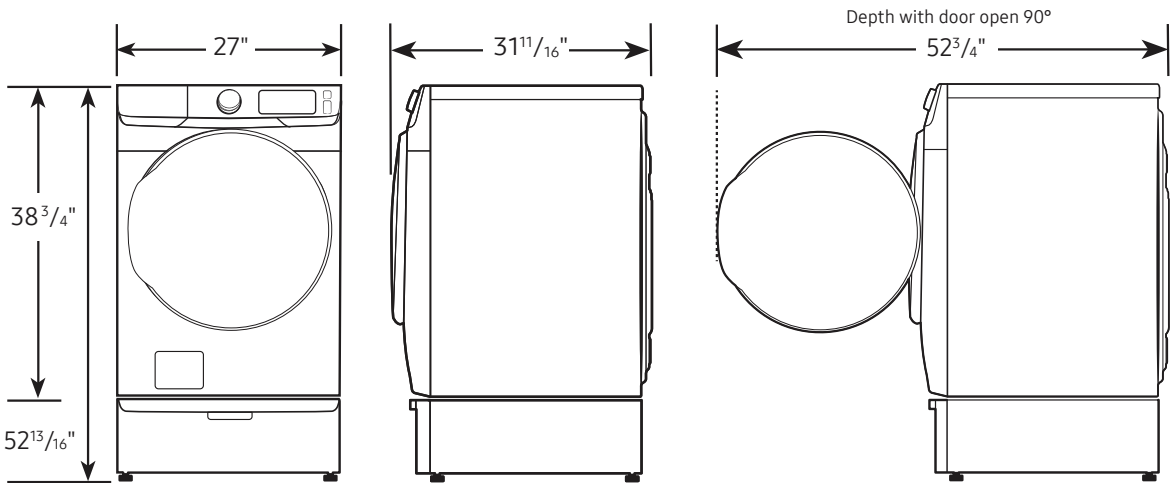
DVE51CG8000

7.5 cu. ft. Smart Electric Dryer with Sensor Dry

SAMSUNG

Dimensions

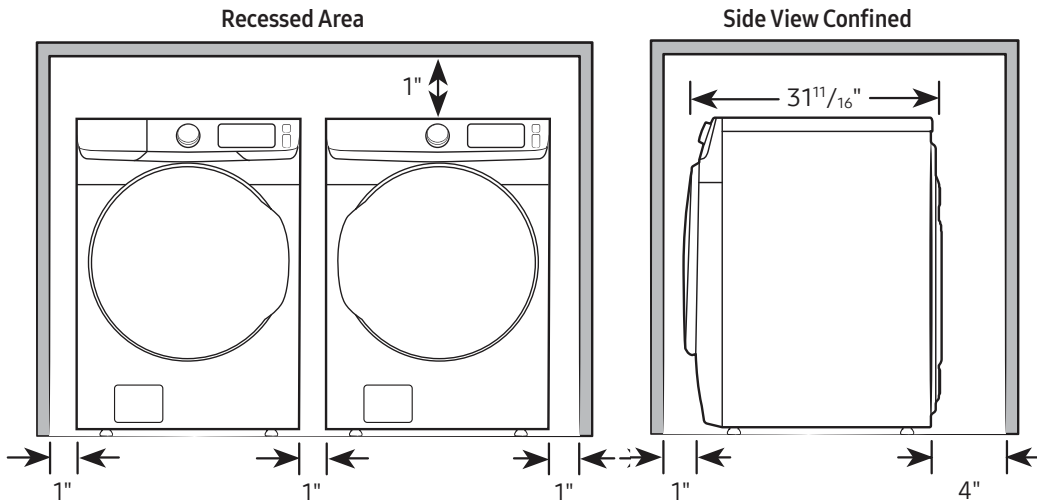
Required dimensions for installation with pedestal:



Installation Specifications – Side-by-Side

If the washer and dryer are installed together or the dryer alone, the closet front must have two unobstructed air openings for a combined minimum total area of 72-inch². Your washer alone does not require a specific air opening.

Alcove or closet installation
Minimum clearance for closet and alcove installations:



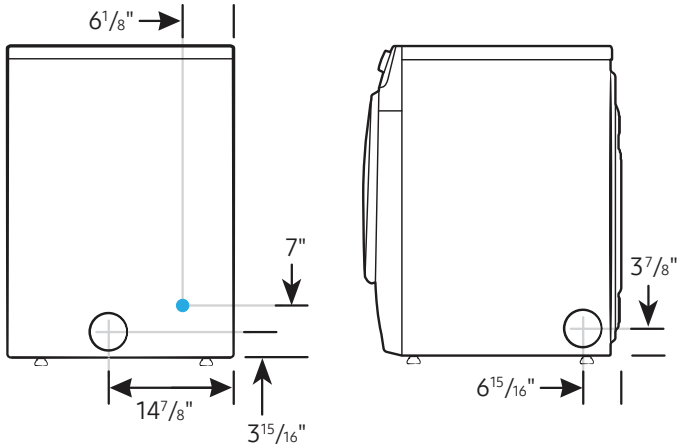
Connection Dimensions

Back and side view of dryer

LEGEND:
● Cold Water Connection

Actual color may vary. Design, specifications, and color availability are subject to change without notice. Non-metric weights and measurements are approximate.

©2023 Samsung Electronics America, Inc., 85 Challenger Road, Ridgefield Park, NJ 07660. Tel: 800-SAMSUNG. samsung.com. Samsung is a registered trademark of Samsung Electronics Co., Ltd.



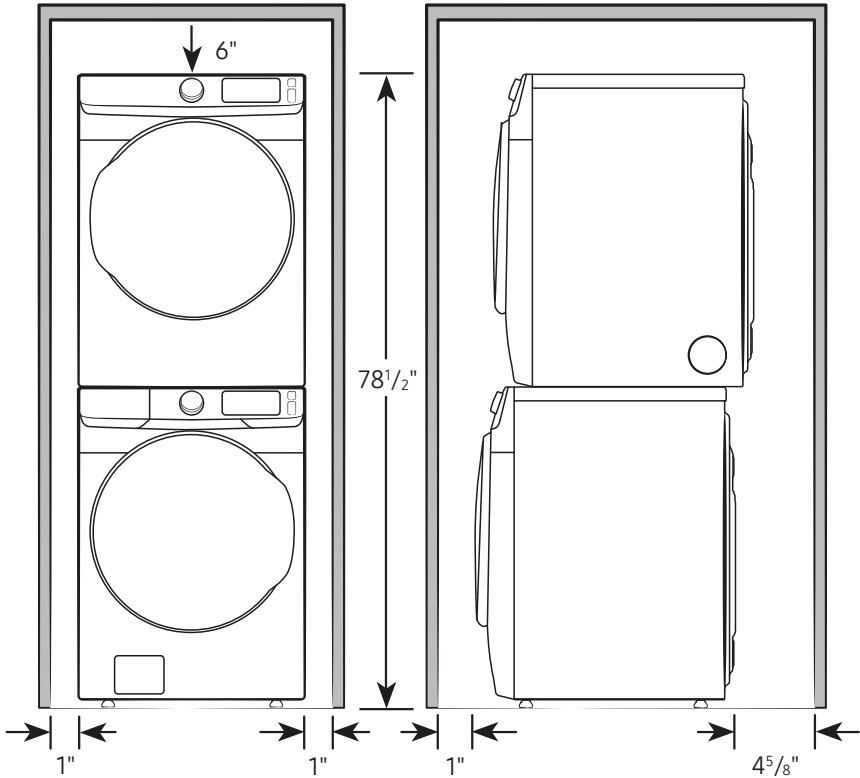
DVE51CG8000

SAMSUNG

7.5 cu. ft. Smart Electric Dryer with Sensor Dry

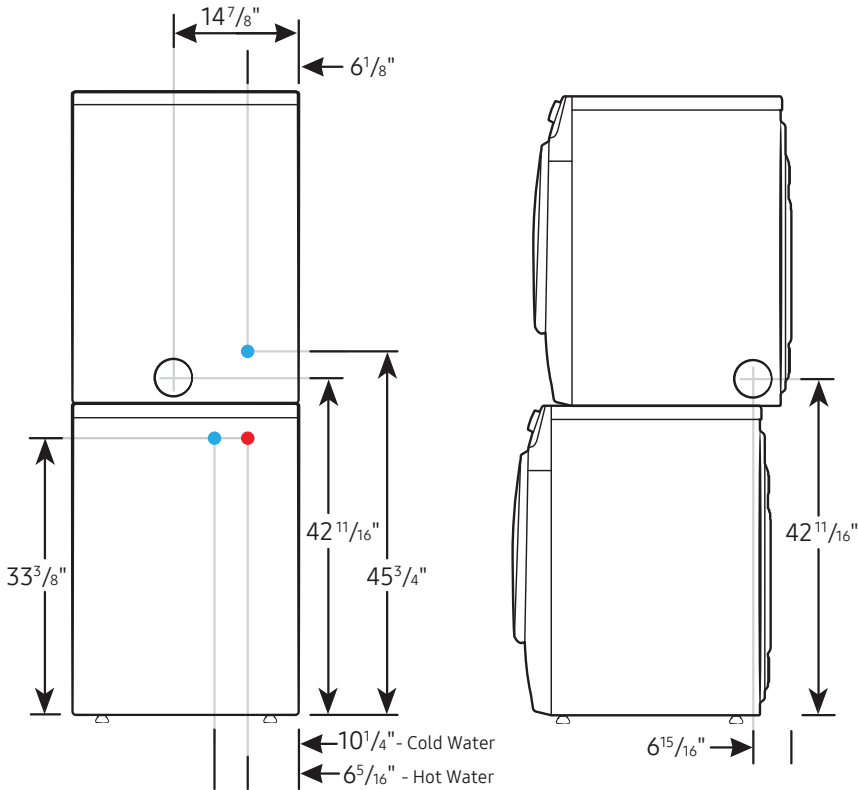
Installation Specifications – Stacked Pair

Clearances indicated are for stacked pairs. The closet front must have two unobstructed air openings for a combined minimum total area of 72-inch².



Connection Dimensions

Back and side views of stacked pair



LEGEND:
● Cold Water Connection
● Hot Water Connection

Actual color may vary. Design, specifications, and color availability are subject to change without notice. Non-metric weights and measurements are approximate.

©2023 Samsung Electronics America, Inc., 85 Challenger Road, Ridgefield Park, NJ 07660. Tel: 800-SAMSUNG. samsung.com. Samsung is a registered trademark of Samsung Electronics Co., Ltd.