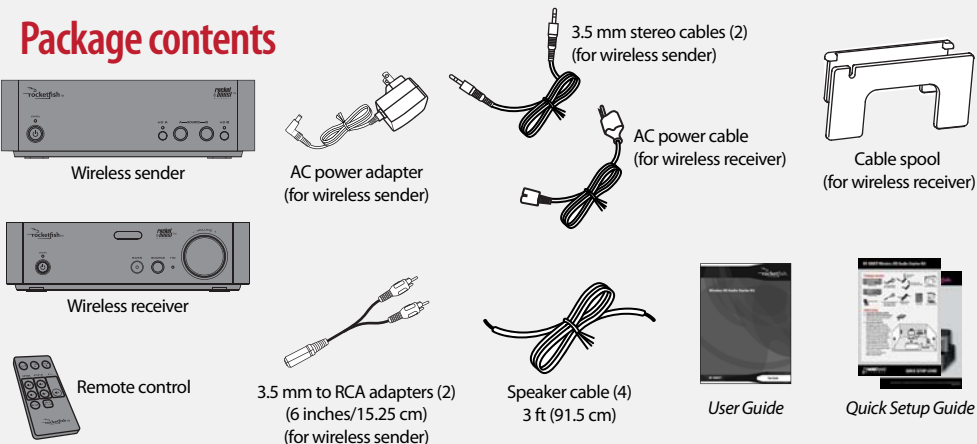


# RF-RBKIT Wireless HD Audio Starter Kit

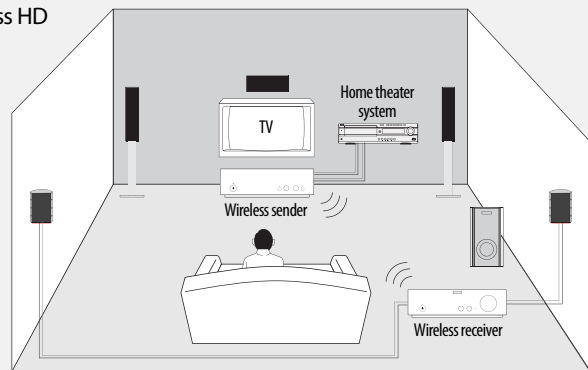
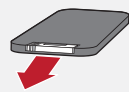


## Package contents



## Initial setup

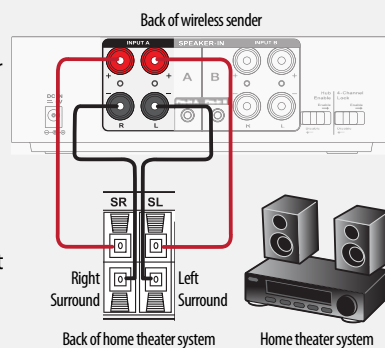
- 1 **Unpack the package contents.**
- 2 **Enable the remote control battery.**  
Remove the tab from the bottom of the remote control.
- 3 **Set up the Wireless HD Audio Starter Kit.**



## Connecting the wireless sender

**Note:** If you already had your speakers connected to the back of your home theater system, you will need to disconnect them before you can set up your wireless sender and wireless receiver.

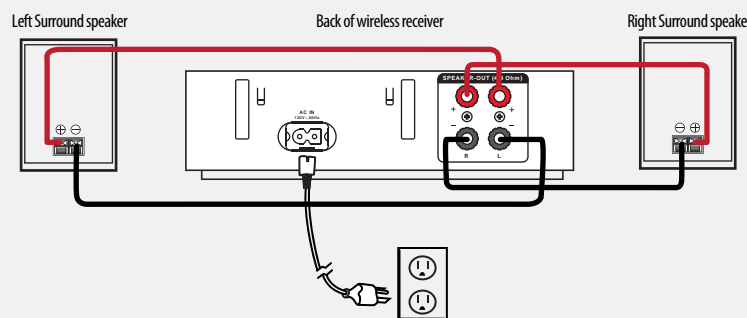
- 1 Connect the Right Surround speaker terminals of your home theater system to the right speaker terminals of the wireless sender on the Input A side. Use red speaker wire to connect the **red (+)** terminals and black speaker wire to connect the **black (-)** terminals. Repeat to connect the Left Surround speaker terminals.
- 2 Plug one end of the AC power adapter into the wireless sender and plug the other end of the cord into an AC power outlet.



**Note:** Your home theater system may vary in appearance. Refer to your home theater system manual.

## Connecting the wireless receiver

- 1 Connect the Right Surround speaker to the right speaker-out terminals on the wireless receiver. Use a red speaker wire to connect the **red (+)** speaker-out terminal and black speaker wire to connect the **black (-)** speaker-out terminal. Repeat to connect the Left Surround speaker.
- 2 Plug one end of the AC power cord to the **AC IN** jack on the back of the wireless receiver, then plug the other end of the cord into an AC power outlet. The Standby indicator turns on.



## Establishing communication

The wireless sender and wireless receiver packaged together with the Wireless HD Audio Starter Kit were pre-paired so they will communicate with each other right out of the box. If you need to re-pair the wireless sender and wireless receiver, use the following steps, otherwise you may skip this section and go to, *Using your wireless sender and receiver*.

- 1 Set the **HUB STATUS** switch on the wireless sender to **ENABLE** if this is your first Rocketboost product set.
  - The power indicator turns green when the **HUB STATUS** switch is set to **ENABLE**.
  - The power indicator turns blue when the **HUB STATUS** switch is set to **DISABLE**.
- 2 Press and hold on the wireless sender for more than three seconds to put it into pairing mode. The power indicator starts blinking rapidly and the unit will stay in pairing mode for 30 seconds.
- 3 Press and hold on the wireless receiver for more than three seconds so the wireless sender and wireless receiver enter pairing mode.
  - The power indicator lights steadily if pairing was successful.
  - The power indicator blinks slowly if pairing was not successful.

If you already have other Rocketboost devices, you need to pair both the wireless sender and wireless receiver to your existing hub device. See your *User Guide* for detailed instructions on how to do this.

## Using your wireless sender and wireless receiver

- 1 Turn on the wireless sender and wireless receiver. The power indicator LEDs should light steadily. If they are blinking, you need to rejoin the wireless sender and wireless receiver. See the *Establishing communication* above.
- 2 Turn on the audio source connected to the wireless sender. Make sure the volume of the audio source is not muted, otherwise no audio will be sent over the Rocketboost network.
- 3 Press the **SOURCE A** button on the wireless sender to turn on the source to the A input. The LED around the source button turns on to show that the source is enabled.
- 4 Adjust the audio level on the wireless receiver.

### Rocketboost network notes:

Every Rocketboost network must contain one hub device, which helps devices join the network. The network can have only one hub, which you can enable using the hub switch on the back of all Rocketboost wireless senders and wireless sender/receivers. If this is your first Rocketboost product, you should make this device the hub, if you already have Rocketboost products, you should disable hub mode on this device.

**Important:** Hub devices must always have power for your network to operate. The hub device can be in standby (power-saving) mode, but must stay plugged in.

