



5 YEAR
WARRANTY

mistaire drop HUMIDIFIER



USER MANUAL
MODEL: PEVALHUM-G

TABLE OF CONTENTS

WARNINGS AND PRECAUTIONS	3-4
FCC NOTICE.....	5
INTRODUCTION & PRODUCT SPECIFICATIONS	6
USING THE HUMIDIFIER	7
FUNCTIONS & FEATURES.....	8-9
CLEANING.....	9-10
TROUBLESHOOTING.....	11
WARRANTY & PRODUCT REGISTRATION.....	12

WARNINGS AND PRECAUTIONS

Read this entire instruction manual before operation. Be sure to comply with all “CAUTIONS” and “WARNINGS”. Failure to adhere to the following instructions can cause harm to you or the device.



Only use product as outlined in this manual. Using the humidifier for unintended purposes may result in serious injury.

- **CAUTION:** To reduce the risk of burns, keep this product out of the reach of children and pets.
- Disassembly, repair or remodeling by an unauthorized person may result in serious harm and will void the manufacturer's warranty.
- Always place this humidifier on a firm, flat & level surface. This humidifier may not work properly on an uneven surface.
- Do not place this product on cloth, carpet or an absorbent surface. This may block air inlet.
- This product releases mist. Do not place this humidifier directly on wood furniture, flooring or any surfaces that could be damaged by water. Manufacturer does not accept any liability for damage in the case of the unit being placed incorrectly.
- Do not use if the plug is damaged or loose.
- Before filling or cleaning the unit, make sure it is unplugged.
- Once the humidifier has been plugged in, do not tilt or move the unit.
- Do not remove the water tank from the unit while it is on.
- Do not handle the plug with wet hands.
- Do not excessively bend, twist, pull or damage the power cord.
- Avoid placing this product where the humidity spout is pointed directly at an object or person.
- Do not inhale the mist/vapor expelled from the product or drink water from the tank.
- Do not fill the water tank with hot or boiling water.
- Do not use this product in direct sunlight or near a heat source such as a stove, heater or radiator.
- If the water tank becomes cracked or damaged, do not use.

WARNINGS AND PRECAUTIONS

- Unplug the cord when unit is not in use for an extended period of time and/or when no one is home.
- Do not keep water in the tank when not in use for an extended period of time.
- Use only the cleaners and additives recommended by the manufacturer on Pages 9-10 of this manual to clean the water tank.
- The use of water additives including ethereal/essential oils, fragrances, eucalyptus, water conditioners, etc. will damage the appliance materials and as a consequence the whole unit.
- Do not use this product near any other electronic device.
- Do not cover the mist nozzle at any time during use.
- Do not put anything on or in the tank.
- When unplugging from outlet hold humidifier securely.
- Do not place cord over objects.
- Do not get water in or on the power cord or where it connects to the product.
- Do not use when plugged in near a sink.
- Do not touch the water tank during operation.
- Do not submerge the unit in water or pour water on the unit or in the humidity spout.
- Do not cover the spout with a cloth or hand and do not use without the spout.
- Use clean or distilled water in tank. Hard water areas will require more frequent cleaning.

FCC NOTICE

Model: MistAire Drop Ultrasonic Cool Mist Humidifier (PEVALHUM-G)

This device complies with Part 18 of the FCC rules.

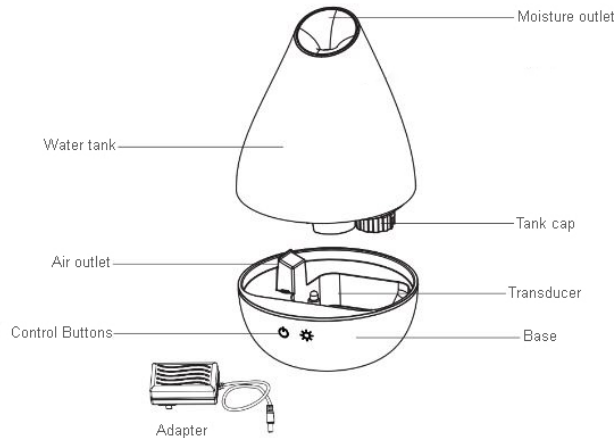
Pure Enrichment
2803 S Yale St.
Santa Ana, CA 92704
pureenrichment.com

This equipment generates, uses and can radiate radio frequency energy and, if not installed and used in accordance with the instructions, may cause harmful interference to radio communications. The equipment should be maintained as discussed in this manual. Changes or modifications not expressly approved by Pure Enrichment will void the user's authority to operate the equipment. If this equipment does cause harmful interference to radio or television reception, which can be determined by turning the equipment off and on, the user is encouraged to try to correct the interference by one or more of the following measures:

- Reorient or relocate the receiving antenna.
- Increase the separation between the equipment and receiver.
- Connect the equipment into an outlet on a circuit different from that to which the receiver is connected.
- Consult dealer or experienced radio/TV technician for help.

INTRODUCTION

Thank you for purchasing the MistAire Drop Ultrasonic Cool Mist Humidifier from Pure Enrichment. This powerful tabletop humidifier is the perfect solution for moisturizing dry air in your home and office. The diagram below explains all the pieces you will find inside the box. Setup is quick and easy, but be sure to follow all instructions to ensure safe and effective use.



PRODUCT SPECIFICATIONS

Size:	6.2" x (L) x 6.2" (W) x 8.8" (H)
Power:	100-240V, 50/60Hz, 12W
Max Room Coverage:	Up to 250 sq. ft.
Max Run Time:	Up to 25 hours*
Tank Capacity:	1.3 Liters (0.34 Gallons)
Moisture Output:	Up to 4 oz per hour (high); Up to 2.4 oz per hour (low)

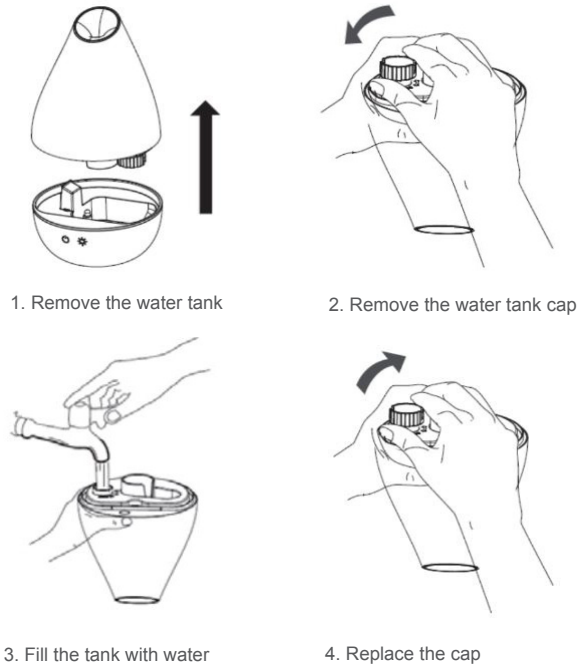
**Run time may vary depending on water quality, room temperature, and the amount of water in tank.*

USING THE HUMIDIFIER

SETUP

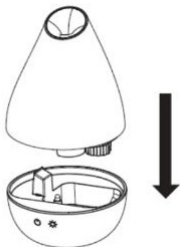
Before you set up the humidifier, select a location that is firm, level, and flat. For proper airflow, the location should be at least six inches from the nearest wall or object. Place the humidifier on a water-resistant surface, as water can damage furniture and some flooring. Do not place unit directly on carpet, towels, blankets or other absorbent surfaces. Pure Enrichment will not accept responsibility for property damage caused by water spillage.

FILLING

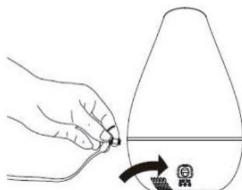


NOTE: Make sure there is water in the unit before turning it on.

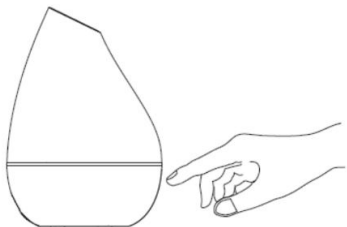
USING THE HUMIDIFIER (CONT'D)



5. Place the water tank on the base



6. Connect the power



7. Use as outlined below

FUNCTIONS & FEATURES

2-Speed Mist Control

The humidifier gives you the option of selecting a high or low moisture setting.



Press the power button once for high, twice for low, and three times to turn the humidifier off.

Night Light



The blue night light can be turned on and off by pressing the light button.

Low Water Level Indicator

When the humidifier is low on water, the blue night light will flicker 3 times and the mist and night light will shut off. Add water to continue use.

FUNCTIONS & FEATURES (CONT'D)

Humidifier Tank

When the humidifier water tank is removed from the body of the unit the power automatically shuts off.

Power Indicator

The humidifier will beep for 1 second and the night light will flicker for 1 second to indicate the unit is now connected to a power source.

CLEANING

Always unplug the humidifier before servicing it in any way.

General Cleaning

- **Inside the base of the unit.** Pour excess water out of the unit. Wash out the unit with fresh water using a soft cloth as needed. Do not submerge the base of the unit into water, or allow water to enter inside the dry air exhaust port of the unit.
- **Water tank.** Empty water tank. Remove mist nozzle and clean the mist tube with fresh water and a bottle cleaning brush (not included).
- **Outer surface of the unit.** Wipe the surface of the unit with a soft, damp cloth if needed. If you notice an accumulation of water during usage, reduce humidity and dry outer surface with a cloth.

Descaling

- Depending on usage and water type, cleaning to remove scale may be required weekly or every other week to optimize unit performance.
- If you live in a hard water area, we recommend distilled water for your humidifier to help reduce the precipitation of minerals or white dust.
- Do not clean the unit or water tank with harsh detergents or cleaning chemicals. A decalcification cartridge or humidifier cleaner capusle may be used to keep tank free of hard mineral deposits.

CLEANING (CONT'D)

Ultrasonic Disk

1. Unplug the humidifier.
2. Remove the tank and empty all water from unit base and tank.
3. Locate the ultrasonic disk on the inside center of the base unit.
4. Use a soft cleaning brush or cloth to gently clean disk and remove build up and deposits.

NOTE: Do not scrub or scrape the ultrasonic disk.

If scale becomes difficult to remove with brush:

1. Fill the base with: mixture of 1 tsp. white vinegar and 1 tsp. water.
2. Let solution stand for 5 minutes.
3. With the vinegar in the base, clean all interior surfaces with a soft cloth or brush to help remove scale.
4. Also check mist nozzle and mist tube in water tank. Clean as needed.
5. Rinse the base thoroughly with water to remove scale and vinegar solution.

END OF SEASON STORAGE

- Follow the General Cleaning and Descaling instructions when the humidifier will be stored at the end of the season.
- Dry the humidifier completely before storing. DO NOT store with water inside the base or water tank.
- Pack the unit in its original carton and store in a cool, dry location.

NOTE: IF YOU EXPERIENCE A PROBLEM DO NOT ATTEMPT TO OPEN THE MOTOR HOUSING BY YOURSELF. DOING SO MAY VOID YOUR WARRANTY AND CAUSE DAMAGE TO THE HUMIDIFIER OR PERSONAL INJURY.

TROUBLESHOOTING

If you are having problems with your humidifier, see if one of the solutions below can resolve the problem before contacting the manufacturer.

Problem	Solution
Mist and humidity are not being produced.	<p>Power plug: Unplug and then try again.</p> <p>Power Failure: When power returns, try again.</p> <p>Tank Installation: Ensure tank is attached properly.</p> <p>Dirty ultrasonic disk: Clean disk (see pg. 10)</p>
Air blows but mist is not produced.	<p>Excessive Water: Pour out extra water.</p> <p>Residue inside tank: Wash tank and try again.</p> <p>Dirty ultrasonic disk: Clean disk (see pg. 10)</p> <p>If you use hard water, replace with softer water.</p>
Humidity level is low.	<p>Dirty ultrasonic disk: Clean disk (see pg. 10)</p> <p>Water in unit is too cold: Replace with cool water.</p>
The humidity has a bad smell.	Poor maintenance or dirty water: Clean humidifier thoroughly, and fill with fresh water.
White dust is forming on nearby furniture.	Hard water may deposit a certain of dust: Dust in the air also settles because of added humidity in the room. Use distilled water if it persists.
Unit has stopped working.	No or low water: Unplug unit and refill tank.
Water is accumulating outside of unit or area surrounding unit.	<p>Saturation of humidity: Lower mist control setting.</p> <p>Unit not level and water is accumulating: Unplug and place on level surface.</p> <p>Point mist away from objects: Raise unit on a water-resistant level surface 2-3 feet off of floor.</p>
Water dripping when refilling.	Water remaining on bottom of tank: Wipe tank or tilt to drain before transporting.
Increased noise level.	Unit must be placed on a flat, level, hard surface: Make sure it is NOT placed on a soft or absorbent surface.
Blue night light flickers 3 times.	This indicates low water: Unplug and refill tank.

WARRANTY

MistAire Drop comes with an industry-leading 5 Year Warranty that begins on the date of purchase.

The warranty applies to the product and necessary parts and labor relating thereto. The warranty does not apply to damage resulting from failure to follow the operating instructions, accidents, abuse, alterations, or disassembly by unauthorized individuals.

PRODUCT REGISTRATION

To ensure your full warranty, and to receive product updates and streamlined customer support, remember to register your product at:

pureenrichment.com/productregistration

ARE YOU 100% SATISFIED?

If you have product questions or concerns, don't hesitate to contact us directly at:

Email: help@pureenrichment.com

Phone: (657) 275-3737

(Available Monday-Friday, 8am-5pm PST)

Pure Enrichment has an award-winning warranty, exchange, and customer service program that guarantees hassle-free solutions within 24 hours for any issue you might have with this product!



Santa Ana, CA 92704
pureenrichment.com