

## PLAF005&PLAF006喂食器单食盆版—快速指南

---

尺寸：130\*80 mm， 风琴折页， 公差 $\pm 0.1\text{mm}$

材质：128g铜版纸， 封面封底覆哑膜

印刷：四色印刷

# BUTTONS AND DISPLAY OVERVIEW



## Unlock Button

Press and hold for 3s to unlock other buttons and screen.



## Manual Feeding Button

Press 1-5 times to dispense 1-5 portions of food.



## Record Button

Press once and a beep is heard, record your message (max 10s), then press again to save and a double beep is heard.



## Number Decrease Button

(Unlocked Status) Press to switch between meal number.  
(Setting Status) Press to decrease number.



## Number Increase Button

(Unlocked Status) Press to switch between meal number.  
(Setting Status) Press to increase number.



## Setting Button

(Setting Status) Press to confirm and enter next step.  
Press and hold for 3s to return to the locked interface.

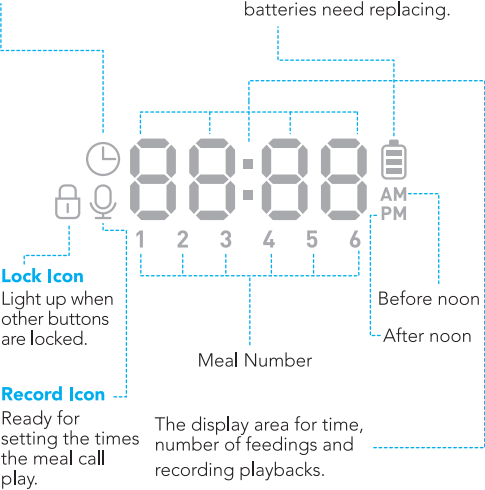


## Time Setting Icon

Ready for current time setting.

## Battery Level Icon

Light up when batteries are installed. Turn red and flash when battery level is low, the batteries need replacing.



# PROGRAM SETTING

Specific Settings	Reference Page in the User Manual
Unlock, and set the current time	Page 15
Choose meal number	Page 16
Set meal time	Page 16
Set meal portion	Page 17
Meal call recording	Page 18
Set playback times	Page 19



Model: PLAF005 & PLAF006

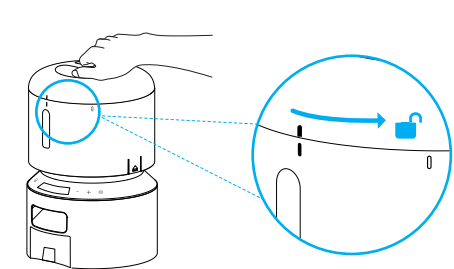
# QUICK GUIDE

Granary Automatic Pet Feeder

This quick guide only applies to PETLIBRO Granary Automatic Pet Feeder with one bowl.

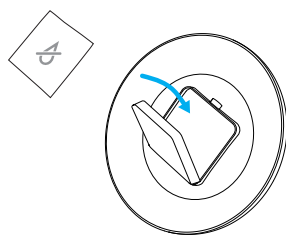
## ASSEMBLY AND PREPARE FOR SETTING

1. Take out the food bowl inside the food tank.



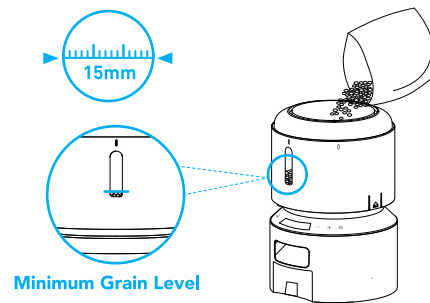
01

2. Place the desiccant bag into the inner box under the lid.



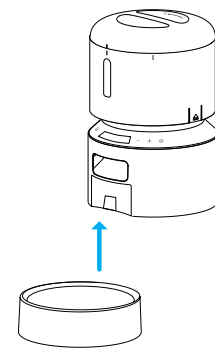
02

4. Add dry pet food. (kibble size: 2-15mm / 0.07-0.6 inch).



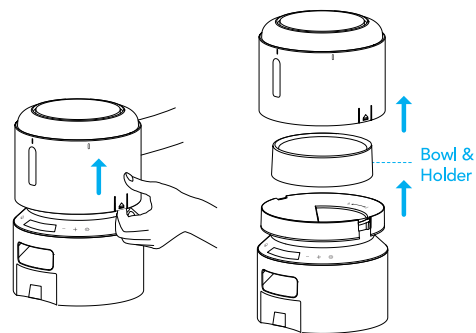
03

6. Install the food bowl.



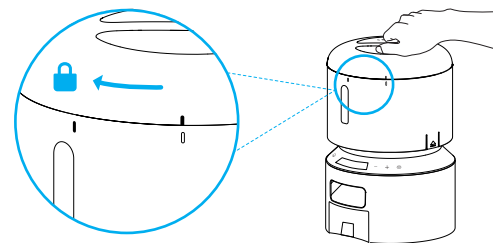
04

3. Install the food tank.



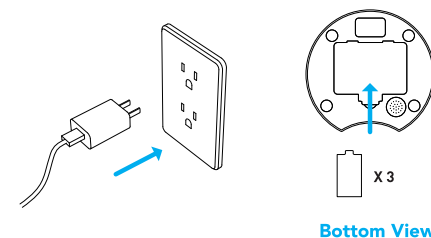
01

5. Put the lid back on.



03

7. Plug in the feeder, and install 3 alkaline D size batteries (not included) for backup.



Bottom View

X 3