

Previously Connected Devices

- It is not necessary to perform the Initial Bluetooth Connection everytime, just press and hold the Power Button until the unit powers on. The speaker can remember multiple Bluetooth devices and will always try to re-connect to the last device used.
- To re-connect to a different device, turn off Bluetooth on unwanted devices, then access the Bluetooth settings menu on the device you wish to use and select **ISBW8**.
- If the speaker should become unpaired or will not connect normally, follow these steps in your device's Bluetooth Settings Menu.
 - » Delete the speaker ("Forget This Device").
 - » Turn Bluetooth OFF then ON again, and repeat the **Initial Bluetooth Connection**.

FCC WARNINGS

- Warning: Changes or modifications to this unit not expressly approved by the party responsible for compliance could void the user's authority to operate the equipment.

NOTE: This equipment has been tested and found to comply with the limits for a Class B digital device, pursuant to Part 15 of the FCC Rules. These limits are designed to provide reasonable protection against harmful interference in a residential installation. This equipment generates, uses, and can radiate radio frequency energy and, if not installed and used in accordance with the instructions, may cause harmful interference to radio communications. However, there is no guarantee that interference will not occur in a particular installation. If this equipment does cause harmful interference to radio or television reception, which can be determined by turning the equipment off and on, the user is encouraged to try to correct the interference by one or more of the following measures:

- Reorient or relocate the receiving antenna.
- Increase the separation between the equipment and receiver.
- Connect the equipment into an outlet on a circuit different from that to which the receiver is connected.
- Consult the dealer or an experienced radio/TV technician for help.

ADDITIONAL WARNINGS

- WARNING: To prevent fire or shock hazards, do not expose this unit to rain or moisture.
- WARNING : Where the mains plug or appliance coupler is used as the disconnect device, such disconnect device shall remain readily operable.
- Lithium batteries, like all rechargeable batteries, are recyclable and should be recycled or disposed of according to state and local guidelines. They should never be disposed of in normal household waste and they should never be incinerated, as they might explode. Contact your local government for disposal or recycling practices in your area.
- **To avoid hearing damage**, make sure that the volume on your music player is turned down before connecting your earbuds or headphones. After placing earbuds in/on your ears, gradually turn up the volume until you reach a comfortable listening level.



WARNING : This product can expose you to chemicals including lead, which is known to the State of California to cause cancer and birth defects or other reproductive harm. For more information go to www.P65Warnings.ca.gov. **This product meets and complies with all Federal regulations.**

Contact Information

Website: www.iLiveElectronics.com

Email Support: prodinfo@dpiinc.com

Email Parts: partsinfo@dpiinc.com

Phone Support: 1-888-999-4215

Warranty

For Warranty Information and the most up-to-date version of this User's Guide, go to: www.iLiveElectronics.com.



*Protect for Today
Sustain for Tomorrow*

Specifications are subject to change without notice.

Copyright © 2018 Digital Products International (DPI, Inc.)

All other trademarks appearing herein are the property of their respective owners.



Waterproof Wireless Speaker
User's Guide for Model ISBW8 v2070-01

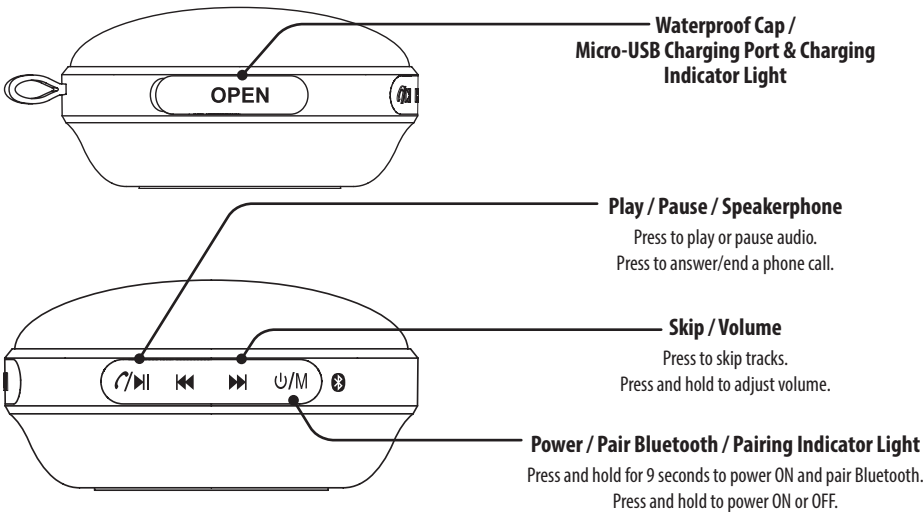
Features

- Bluetooth wireless range: 60 ft.
- Built-in microphone
- Durable fabric & rubberized coating
- Built-in rechargeable battery: approx. 1.5 hrs playtime at 100% volume

Includes

- USB charging cable
- Carabiner
- User's Guide

Overview



Waterproof Rating - IPX4

This unit has a water resistance rating of IPX4. This rating is suitable for indoor and outdoor use in the presence of incidental or light exposure to splashing water, rain, or snow. Water splashing against the enclosure from any angle should have no harmful effects. It is not recommend to submerge this speaker in water for any amount of time.

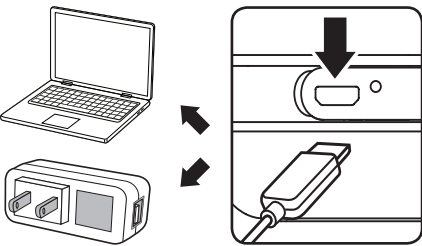
IMPORTANT: To ensure your speaker is prepared for use in a wet environment, disconnect and remove any power cables, and tightly close the charging port water cap. If the water cap is not properly closed, water resistance will be compromised and could result in damage to the speaker or personal injury.

Charging the Battery

Warning: Do not charge the speaker while it is in or near water. If splashed or wet, allow ample time to dry before charging.

Initial charge time is approximately 2 hours. Charge fully before use.

- Pull back the water cap and use a **Micro-USB to USB** cable (included), to connect to the USB port of a powered on computer or USB power adapter (not included).



Power Status	Indicator Light
Low Battery	Flashing red light
Charging	Solid Red light
Finished Charging	No light

Initial Bluetooth Connection

1. Power on and begin pairing by holding the **Power** button for 9 seconds, until a voice announces "Bluetooth is connecting" and the indicator begins quickly flashing blue. *When pairing, remain within 3 feet of the unit.*
2. Using the controls on your Bluetooth device, select **ISBW8** in the Bluetooth Settings to pair. *If need be, refer to the user's manual for your specific device for more information.*
3. When successfully paired, a voice will announce "Bluetooth is connected" and the LED indicator will turn solid blue. Audio from the connected Bluetooth device will now play on the speaker.
4. Use the controls on the connected Bluetooth device to select and play audio. Use the speaker controls or the connected Bluetooth device to play, pause, and adjust the volume level.

Using the Speakerphone

- To accept a call, press the button or use the controls on the connected phone.
- To end a call, press the button or use the controls on the connected phone.
- To re-dial the last dialed number, press the button twice.