



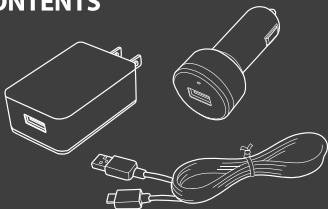
Please see www.rocketfishproducts.com for the latest Quick Start Guide and troubleshooting.

Mobile Power Pack for Nintendo® Switch™ and Nintendo® Switch™ Lite

RF-NSPWRPK / RF-NSPWRPK-C

PACKAGE CONTENTS

- USB AC Adapter
- USB Car Adapter
- 6.5 ft Charging Cable
- Quick Setup Guide



QUICK SETUP GUIDE

Before using your new product, please read these instructions to prevent any damage.

FEATURES

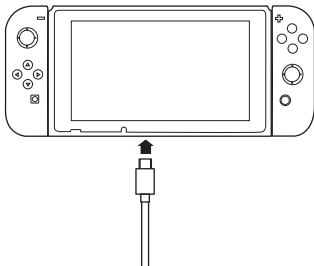
- Charge and play your Switch or Switch Lite console on the go or at home
- Use the USB AC adapter to charge your console from any standard electrical outlet
- Use the USB car adapter to charge your console from a vehicle power socket
- Compatible with Nintendo® Switch™ and Nintendo® Switch™ Lite

SAFETY INFORMATION

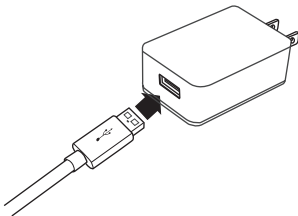
- You must use the included AC adapter to power the dock.
- Do not disassemble any of the components. Refer all services to qualified personnel only.
- Do not place or store the product in a humid area and do not expose it to water or rain.
- Use the product only as instructed. Read all instructions before operating the product.
- Failure to follow these directions may void the warranty.
- Do not use voltage transformers or plugs that deliver reduced amounts of electricity.

USING THE AC ADAPTER

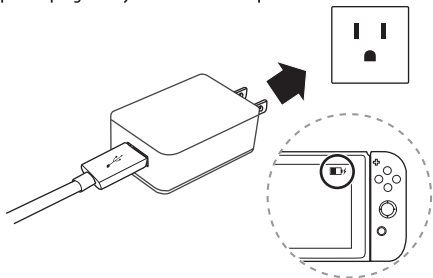
- 1 Insert the included USB Type C cable into the charging port on the bottom of your console.



- 2 Plug the charging cable into the USB port on the USB AC adapter.



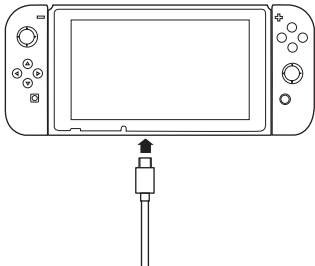
- 3** Insert the AC adapter into a wall outlet. Make sure that the power plug is fully inserted into the power outlet.



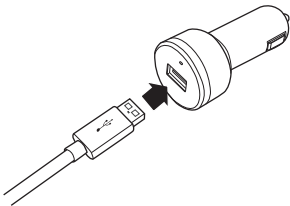
The charging status appears on the top right of the screen.

USING THE CAR ADAPTER

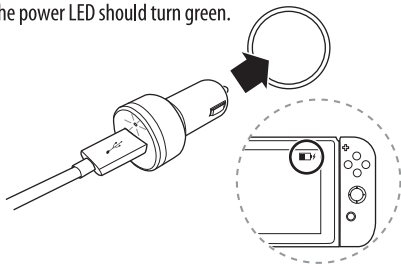
- 1 Insert the included USB Type C cable into the charging port on the bottom of your console.



- 2 Plug the charging cable into the USB port on the USB car adapter.



- 3** Plug the USB car adapter directly into the vehicle's power socket. The power LED should turn green.



The charging status appears on the top right of the screen.

SPECIFICATIONS

Dimensions (W×H×D) <ul style="list-style-type: none">• USB AC Adapter• USB Car Adapter	2.83 x 1.57 x 0.90 in. (72 x 40 x 23 mm) 3.07 x 1.30 x 1.30 in. (78 x 33 x 33 mm)
Charging Cable length	6.5 ft. (2 m)
USB AC Adapter	Input: AC 100 -240 V Output: 5 V / 2A
USB Car Adapter	Input: DC 12 - 24 V Output: 5 V / 2A

Need help? Call 1-800-620-2790 (U.S. and Canada)

TROUBLESHOOTING

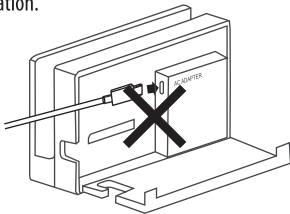
- Before using this product, please make sure that your Switch console firmware has been upgraded to version 2.0 or above.



System Settings → System → System Update

- Notes: This USB AC charger (5V/2A) may charge slower than the standard Switch AC charger (15V/1.5A), please keep charging the console for 40min at least to activate the switch console if it fully run out of battery.

Warning: Do not connect the power pack to the Switch TV dock station. The Power Pack is not intended to be used with the TV dock station.



LEGAL NOTICES

FCC Information

This device complies with part 15 of the FCC Rules. Operation is subject to the following two conditions: (1) This device may not cause harmful interference, and (2) this device must accept any interference received, including interference that may cause undesired operation.

Warning: Changes or modifications to this unit not expressly approved by the party responsible for compliance could void the user's authority to operate the equipment.

Note: This equipment has been tested and found to comply with the limits for a Class B digital device, pursuant to Part 15 of the FCC Rules. These limits are designed to provide reasonable protection against harmful interference in a residential installation. This equipment generates, uses and can radiate radio frequency energy and, if not installed and used in accordance with the instructions, may cause harmful interference to radio communications. However, there is no guarantee that interference will not occur in a particular installation. If this equipment does cause harmful interference to radio or television reception, which can be determined by turning the equipment off and on, the user is encouraged to try to correct the interference by one or more of the following measures:

- Reorient or relocate the receiving antenna.
- Increase the separation between the equipment and receiver.
- Connect the equipment into an outlet on a circuit different from that to which the receiver is connected.
- Consult the dealer or an experienced radio/TV technician for help.

ICES-003 Statement

This Class B digital apparatus complies with Canadian ICES-3(B) / NMB-3(B) standard.

ONE-YEAR LIMITED WARRANTY

Visit www.rocketfishproducts.com for details.

Nintendo Switch is a registered trademark of Nintendo Inc.

This product is not sponsored or approved by Nintendo.

ROCKETFISH is a trademark of Best Buy and its affiliated companies. Registered in some countries.

Distributed by Best Buy Purchasing, LLC, 7601 Penn Ave South, Richfield, MN 55423 U.S.A.,

©2020 Best Buy. All rights reserved.

Made in Taiwan

Need help? Call 1-800-620-2790 (U.S. and Canada)