



QUICK SETUP GUIDE

ELITE GLASS SCREEN PROTECTOR 2-PACK FOR NINTENDO® SWITCH™ 2 NX-NS2SP2

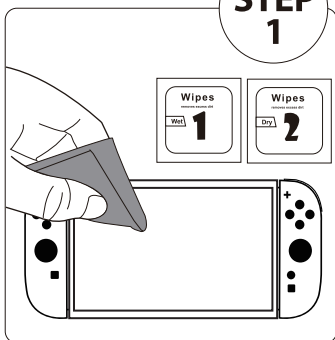
PACKAGE CONTENTS

- Glass screen protector x2
- Dust absorbent sticker x2
- Cleaning cloth
- Quick setup guide
- Guide frame
- Wet and dry wipes x2
- Plastic card

Before using your new product, please read these instructions to prevent any damage.

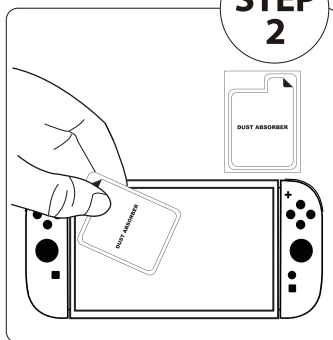
INSTALLATION INSTRUCTIONS:

STEP 1



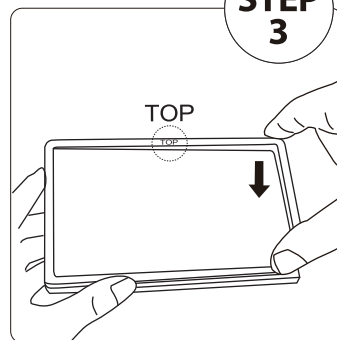
Clean the screen with provided wet and dry wipes.

STEP 2



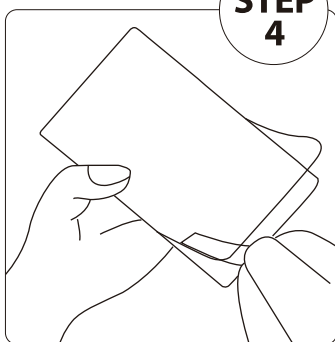
Remove any remaining dust or particles from the screen using the dust absorbent sticker.

STEP 3



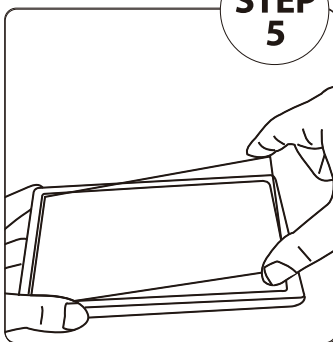
Remove the Joy-Con 2 controllers and attach the guide frame to the screen side of the Switch 2.

STEP 4



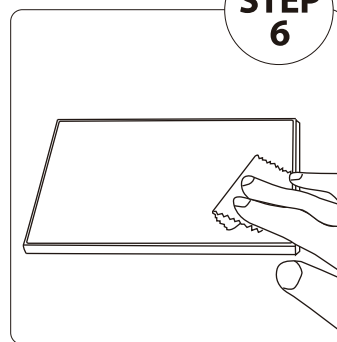
Remove the film on the bottom side of the screen protector being careful not to touch the bottom of the screen protector.

STEP 5



At an angle, place the edge of glass up against the inside of the guide frame and slowly lay the glass down onto the screen from left to right.

STEP 6



Remove the guide frame and push any air bubbles that may exist to the edge of the glass using the plastic card.

* Save the guiding frame for use with the second screen protector if needed.