



Models:
 WD-402 KG4 US
 WD-405 KG4 US
 WD-450 KG4 US
 WD-451 KG4 US

OWNER'S MANUAL
All Purpose and Wet/Dry Vacuum

CONGRATULATIONS!

You have just purchased a Koblenz® Vacuum Cleaner. Please read this manual carefully before operating the machine. Model and serial number may be found on the side of your vac. You should record both model and serial numbers and keep them in a safe place for future use.

Save these instructions

Electrical Rating: 120 V~ 60 Hz 4.5 A

CONTENTS

Important safety instructions	Vac assembly	Storage
Warning	Caster / Caster foot assembly	Filter maintenance
Product description	Filter assembly	Trouble shooting
Polarized connection	Operation	Warranty
Grounding instructions	Cleaning the tank	

IMPORTANT SAFETY INSTRUCTIONS

When using an electric vacuum cleaner, basic precautions should be followed including the following:

Read all instructions before using this vacuum cleaner.

This vacuum cleaner is for domestic use only; it may be used for vacuuming wet or dry materials and as a blower.

WARNING

To reduce the risk of fire, electric shock or injury:

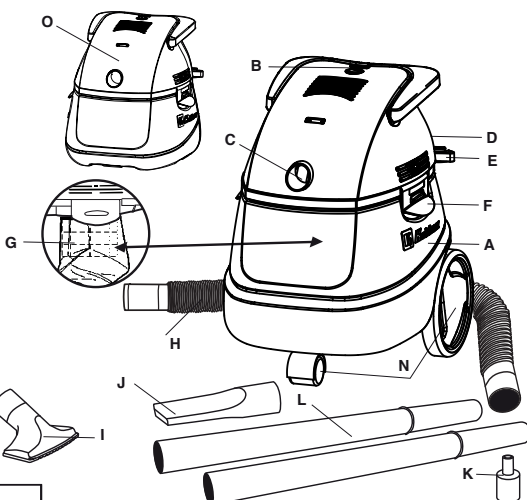
- Do not use to pick up flammable or combustible liquids, such as gasoline or use in areas where such items may be present.
 - Use product only as described in this manual, use only manufacturer's recommended attachments.
 - Do not pick up anything that is burning or smoking; such as cigarettes, matches or hot ashes.
 - Do not leave vacuum plugged in. Unplug from outlet when not in use and before servicing.
 - Turn off all controls before unplugging.
 - Do not put any object into openings. Do not use with any opening blocked. Keep free of dust, lint, hair and anything that may reduce air flow.
 - Do not use without filter in place.
 - Do not allow vacuum to be used as a toy, or to run unattended at any time. If used near children, close supervision is necessary.
 - Do not store outdoors.
 - Do not use with a damaged cord or plug. If vacuum is not working as it should, or if it has been dropped, damaged, or submerged into water, return it to an authorized service center.
 - Do not pull or carry by cord, use cord as a handle, close a door on a cord or pull cord around sharp edges or corners, do not run vacuum over cord. Keep away from heated surfaces.
 - Do not unplug by pulling on cord. To unplug, grasp the plug, not the cord.
 - Do not handle plug or appliance with wet hands.
 - Use extra care when cleaning stairs.
 - Keep hair, loose clothing, fingers and all parts of body away from openings and moving parts.
 - Never use vacuum cleaner as a pump.
- If the line cord is damaged it must be replaced by the manufacturer or an authorized service center.
- Connect to a properly grounded outlet only. See grounding instructions.



Improper connection of the equipment grounding conductor can result in a risk of electric shock. Check with a qualified electrician or service person if you are in doubt as to whether the outlet is properly grounded. Do not modify the plug provided with the appliance if it does not fit the outlet, have a proper outlet installed by a qualified electrician.

PRODUCT DESCRIPTION

- A) Tank
- B) On/Off switch
- C) Vacuuming port
- D) Air blower port
- E) Tool caddy
- F) Lid release tab
- G) Filter and elastic band
- H) Flexible hose
- I) Pick up tool
- J) Crevice tool
- K) Inflator nozzle
- L) Telescopic tubes
- M) Floor/carpet combined accessory
- N) Wheels
- O) Version without wheels



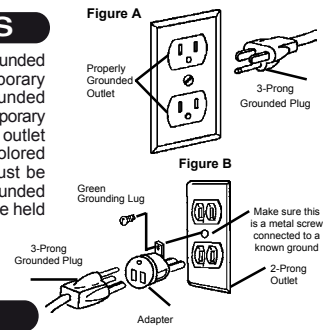
IMPORTANT:
 Not all models include all accessories. See the side panel in the box for more information.

Model	Tank Capacity	Wheels
WD-402 KG4	3 gallons	No
WD-405 KG4	3 gallons	No
WD-405B KG4	3 gallons	No
WD-450 KG4	5 gallons	Yes

GROUNDING INSTRUCTIONS

This appliance is for use on a 120V~ circuit, and has a grounded plug that looks like the plug illustrated in figure A. A temporary adapter may be used to connect this plug to a non grounded outlet if a properly grounded outlet is not available. The temporary adapter should be used only until a properly grounded outlet can be installed by a qualified electrician. The green colored rigid ear, lug or the like extending from the adapter must be connected to a permanent ground such as a properly grounded outlet box cover. Whenever the adapter is used, it must be held in place by a metal screw. (fig. B).

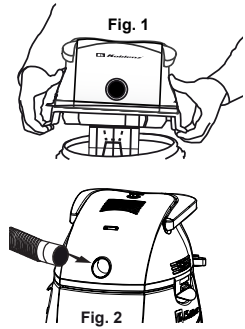
NOTE: In Canada, the use of a temporary adapter is not permitted by the Canadian Electrical Code.



VAC ASSEMBLY

CAUTION: Unplug power cord before performing any maintenance on it.

- Line up the motor head with the tank. Pull the side latches out and lower the head into place, let go of the latches. Latches should snap into the tank tabs. (Fig. 1).
- Insert the hose into the vacuuming or blowing port. To release the hose, turn it and gently pull it out. (fig. 2)
- Insert telescopic wand to the opposite end of the hose, then insert the accessory, can be connecting them directly to the hose. (fig. 3)
- Press the On/Off button to vacuum cleaner.
- To disconnect the hose from vacuum cleaner, take it from the end connected, turn it and pull out.



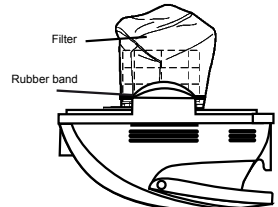
- Familiarize yourself with the controls of your vacuum cleaner.
- Before you use combination carpet/floor tool make sure that the position of the button is correct for the type of surface to be cleaned. (Fig.4)

- a) Lower the brush for vacuum floors.
- b) Use without brush attachment to vacuum carpets.

For maintaining the highest cleaning efficiency keep the brush attachment always clean.

FILTER ASSEMBLY

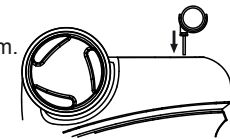
Place the paper filter above cage, and attach it with rubber band as shown in figure.



CASTER FOOT ASSEMBLY

- Turn the dust drum upside down on the floor.
- Insert the plastic caster foot into the bottom of drum.
- Push until it is flush, with bottom of the dust drum.
- Turn the drum upright.

Note: Not all models include wheels.



OPERATION

TO VACUUM SOLIDS
 Never vacuum solids WITHOUT THE FILTER, this will damage the machine and invalidate the warranty.

Follow the instructions in "Filter Assembly" on this page.

AIR EXPULSION SYSTEM
 Never eject air WITHOUT THE FILTER, this will damage the machine and invalidate the warranty.

This Koblenz vacuum cleaner also functions as an air blower. It has the capability to blow sawdust and other debris. It is excellent to use to blow dust and debris out of garages or off patios and driveways.

WARNING:

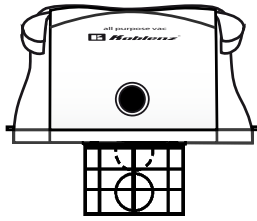
To avoid injury to by standers, keep them clear of blowing debris. The operation of any utility vac can result in foreign objects being blown into the eyes, which can result in severe eye damage. Always wear safety goggles.

To use your Koblenz vacuum as a blower:

- Locate the blowing port of your vac.
- Insert flexible end of the hose into the blowing port.
- Turn vac "ON" and you are ready to use your vac as a blower.

IMPORTANT:

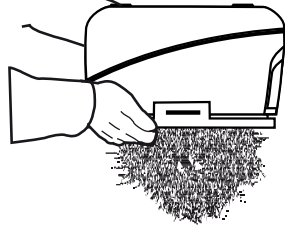
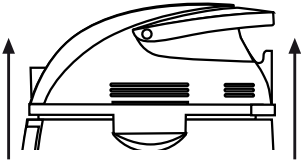
To avoid damage to the unit do not let the motor run with a full tank.



EMPTYING THE TANK

WARNING: To avoid injury from accidental starting, unplug power cord before emptying the tank.

1. Remove the hose.
2. Pull the side latches outward, at the same time pull the cover up.
3. Place cover upside down on a clean surface.
4. Dump tank contents into a waste container.



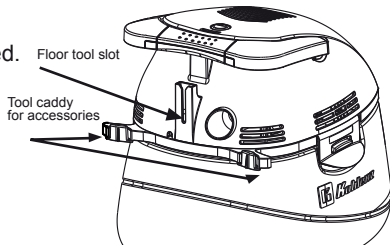
WARNING:

To avoid back injury or falls, do not lift a vac heavy with liquid or debris. Scoop or drain enough contents out to make the vac light enough to lift comfortably.

STORAGE

VAC AND ACCESSORIES

Before storing your vac, the dust tank should be emptied and cleaned. The cord should be wrapped around the cord wrap. Accessories should be kept on the tool caddy. The vac should be stored in doors.



Note:

The accessories may vary depending on the model purchased.

FILTER MAINTENANCE

WARNING: To avoid injury from accidental starting, unplug power cord before changing or cleaning filter.

CLEANING: Your filter should be changed often to maintain peak vac performance.

NOTE: This filter is made of high quality materials designed to stop very small particles of dust. Handle the filter carefully when removing to clean or installing it. Creases in the filter pleats may occur from installation but creases will not affect the performance of the filter.

Always use the unit with the filter when vacuuming dry debris and dust.

IMPORTANT: After cleaning the paper filter, check for holes. If any holes are found replace the filter immediately. Even small holes will permit dust to come out of the vac.

GENERAL MAINTENANCE

To keep your wet / dry vac looking its best, clean the outside with a cloth dampened with water and mild soap.

- To clean the tank:
1. Dump out debris.
 2. Wash drum thoroughly.
 3. Wipe out with dry cloth.

WARNING:

To assure product **SAFETY AND RELIABILITY**, repairs and adjustments should be performed by a Koblenz Service Center, always using Koblenz replacement parts.

BLOWING FEATURES

This Koblenz vacuum cleaner also functions as an air blower. It has the capability to blow sawdust and other debris. It is excellent to use to blow dust and debris out of garages or off patios and driveways.

WARNING:

To avoid injury to bystanders, keep them clear of blowing debris. The operation of any utility vac can result in foreign objects being blown into the eyes, which can result in severe eye damage. Always wear safety goggles.

To use your Koblenz vacuum as a blower:

1. Locate the blowing port of your vac.
2. Insert flexible end of the hose into the blowing port.
3. Turn vac "ON" and you are ready to use your vac as a blower.

TROUBLESHOOTING

PROBLEM	POSSIBLE CAUSE	POSSIBLE SOLUTION
Vacuum does not start	Not firmly plugged in.	Plug in firmly.
Low suction.	Tank full. Filter is dirty.	Empty tank. Shake dust out of filter or wash it if necessary. See "Filter Maintenance Section".
	Obstruction in hose.	Connect the hose to the blowing port until hose is clear. Be sure that the cover seats properly
	Motor head not installed correctly.	

WARRANTY

This warranty gives you specific legal rights, and may also have other rights that vary from state to state, province to province, or country to country. Warranty coverage ends when the product becomes unusable for reasons other than defects in workmanship or material for a period of 2 years for domestic use. Limited warranty against manufacturing defects.

THIS WARRANTY SHALL NOT APPLY to any products or parts there of which have been damaged by tampering, misuse or abuse or which have been altered or repaired by an unauthorized person or service center.

THIS WARRANTY SHALL NOT APPLY to brushes or accessories since their life depends upon the amount of use.

THIS WARRANTY SHALL NOT APPLY when picking up dust and dry materials without filter in place.

THIS WARRANTY SHALL NOT APPLY when picking up liquids with filter in place.

THIS WARRANTY SHALL NOT APPLY when blowing sawdust and other debris without filter in place.

FOR REPAIR the inoperative machine must be delivered with shipping and delivery charges prepaid together with satisfactory evidence of the purchase date to an authorized service center or Thorne Electric Company at the address that appears below. Koblenz will either repair or replace, at its selection, all defective machines during the warranty period.

Some states do not allow the exclusion or limitation of incidental or consequential damages, so the above limitation or exclusion may not apply to you.

This warranty is the sole and exclusive warranty for Koblenz products. No employee, agent, dealer, or other person is authorized to alter this warranty or make other warranty on behalf of Koblenz Electric.

The foregoing obligations are in lieu of all other obligations and liabilities including negligence and state Koblenz's entire and exclusive liability and the purchaser's exclusive remedy. Koblenz will in no event be liable for any direct, indirect, special, incidental or consequential damages or losses what so ever. Koblenz's liability under no circumstances will exceed the contract price for the goods or parts for which liability is claimed. Some states do not allow the exclusion or limitation of incidental or consequential damages, so the above limitation or exclusion may not apply to you.

U.S. Patent Numbers
US D 467,693S, US D467,694S,
US D 468,499S, US D470,633S.
Other patents pending.

Visit our website www.koblenz.com

Thorne Electric, Co.

P. O. Box 18363
San Antonio, TX.
78218-0363 U.S.A.
Tel: 1(888) 647-1433

Koblenz Eléctrica, S.A. de C.V.

Av. Ciencia No. 28,
Parque Industrial Cuamatla
Cuautitlán Izcalli, Edo. de México,
México, C.P. 54730 Tel. (55) 5864-0300

Canada Call:

Tel: (210) 590 1226