

Brother QL-800 | QL-810W | QL-810Wc
QL-820NWB | QL-820NWBc

brother
at your side



VISITOR

John Smithson Date: 11/28
Time: 2:31PM
Expires: 11/29



QL-800 Series Professional Label Printers

- Print in black and red to highlight important information.
- Wide range of connectivity options.
- PC, Mac®, iOS® and Android™ compatibility.
- High speed printing of up to 110 labels per minute¹.
- Use continuous rolls and cutter to print labels up to three feet in length.
- Stand-alone printing function where no PC required – ideal for food and retail applications.



The Brother QL-800 Series of professional label printers offer unrivaled versatility in the office as well as warehouse, retail, and food service industries.

Create labels with sharp black and red² colors and print up to three feet in length from PC, Mac, iOS, or Android devices. In addition, several wired and wireless connectivity options are available, and even the ability to directly print labels stored in the printer's memory using the integrated LCD/control panel on the Brother QL-820NWB and QL-820NWBc. External devices connected to the printers can also print for even more business convenience.

For developers and systems integrators looking to incorporate label printing as part of their solutions, software development kits for Windows®, iOS, and Android offer an easy way to add support for the Brother QL-800 series label printers.



Summary of features



QL-800



QL-810W



QL-810Wc



QL-820NWB



QL-820NWBc

Uses DK labels and tapes up to 2.4-inches wide	X	X	X	X	X
Die-cut and continuous-length label rolls	X	X	X	X	X
Automatic cutter	X	X	X	X	X
Labels per minute print speed ¹	Up to 93	Up to 110	Up to 110	Up to 110	Up to 110
Amazing Black/Red Print using DK-2251	X	X	X	X	X
Windows- and Mac-compatible	X	X	X	X	X
Mobile printing via iPrint & Label app ³	X- Android only with USBtoGO cable ³	X	X	X	X
Wireless interface		X	X	X	X
Li-ion Battery capable (option) ⁴		X	X	X	X
ESC/P P-touch template (6mb/99 255)		X-99	X-99	X-255	X-255
Bluetooth® technology				X	X
Backlit LCD display				X	X
Wired Ethernet				X	X
Host USB interface				X	



Versatile labeling options

With fast print speeds and a wide range of connectivity options, the Brother QL-800 series label printers are the ideal solution for many types of business.

Print amazing Black/Red labels using Brother DK-2251 tape

The Brother QL-800 series office category label printer offers technology that lets you print two colors over the entire label!



Wide range of connectivity options

All Brother QL models allow easy connection to desktop computers using USB. In addition, the Brother QL-810W has Wi-Fi capabilities, while the QL-810Wc incorporates Wi-Fi plus an upgraded Wi-Fi® Security system (WPA3).

The Brother QL-820NWB has Ethernet and Bluetooth® wireless connectivity, plus a USB host interface. The Brother QL-820NWBc has enhanced Wi-Fi® Security (WPA3) and upgraded Bluetooth® v5.2 technology.

Create labels the size you need

Labels are available in a range of traditional die-cut (pre-sized), or continuous rolls that lets the built-in cutter trim your label to the precise length needed (up to three feet).

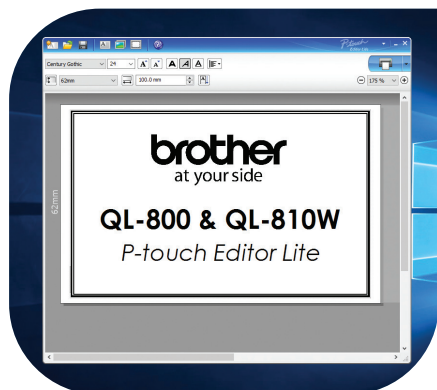


Print from desktop and mobile devices, or stand-alone

The entire lineup of the QL Series label printers is PC and Mac-compatible. In addition, the Brother QL-810W, QL-810Wc, QL-820NWB, and QL-820NWBc can connect to smartphones and tablets using built-in wireless connections³. For even more efficient printing, you can select and then print labels stored in the memory of the Brother QL-820NWB and QL-820NWBc using the large LCD display and integrated control panel.

Software solutions

With label design apps for desktop PC's and mobile devices, and SDK's to integrate the Brother QL range into your own applications, you can choose the best option for your label printing needs.

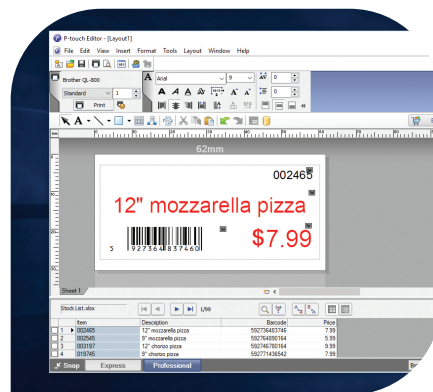


P-touch Editor Lite⁵ / P-touch Editor Lite LAN⁵

Built inside the Brother QL-800, QL-810W, and QL-810Wc, this easy-to-use label design software works without the need to install software or drivers. Instead, connect to your PC or Mac using a USB, and launch the software from the drive that appears. The software includes images, frames, and any fonts on your label design. A version for network-connected models is also available. To do this, run the software to allow many office PCs to print labels to one printer. Again, no installation is needed.

P-touch Editor with Microsoft® Office add-in³

Design professional labels including images and logos, barcodes and frames. Link to data contained in Excel® or .csv files, to print many labels quickly and efficiently. The Microsoft Office add-in lets you highlight, click and print right from within Word, Excel or Outlook.

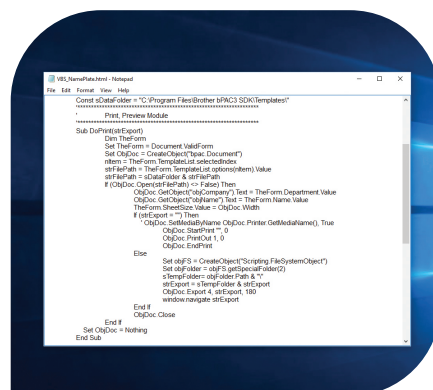


Brother iPrint&Label app for iOS and Android smartphones/tablets³

Print labels on the Brother QL-810W, QL-810Wc, QL-820NWB, and QL-820NWBc using the free iPrint&Label app. Connect via Wi-Fi for the Brother QL-810W and QL-810Wc or Bluetooth on Brother QL-820NWB and QL-820NWBc, and choose one of the pre-defined templates or quickly design your label from scratch. This free app is available from your mobile device's app store by searching "Brother iPrint&Label."

Software Development Kits for Windows, iOS and Android

System integrators and software developers can now take advantage of various Brother SDK's that allow easy integration of label printing directly within their own apps and software. For more information please visit <http://www.brother-usa.com/lp/civ/home.aspx>.



Advanced Functionality

The Brother QL-820NWB and QL-820NWBc, with their stand-alone print and remote FTP template update functions, allow label printing directly from the control panel. Plus, comprehensive connectivity options offer compatibility with virtually any device (smartphones and tablets).³

Stand-alone label printing

Store label templates designed in P-touch Editor⁶ in the Brother QL-820NWB and QL-820NWBc large memory. Label templates can be downloaded to the printer's memory and accessed using the integrated control panel and backlit graphic LCD display. Ideal for printing current or future dates/times on labels in the food and retail industries.



Remote template update via FTP

Updating the templates in label printers in multiple locations is typically a time-intensive operation. The Brother QL-820NWB and QL-820NWBc label printers can automatically connect using FTP to a remote server, and if new templates are found, update these automatically. All this is directly from the printer via the internet, without needing a PC connection.

This process helps companies save time and money and ensures consistent operation at all remote sites.

AirPrint^{®7} and Bluetooth with MFi (Made for iPod/iPhone/iPad) compatibility

The Brother QL-810W, QL-810Wc, QL-820NWB, and QL-820NWBc all support Apple[®] AirPrint^{*} to enable printing from compatible apps on iOS and Mac devices. In addition, the Brother QL-820NWB and QL-820NWBc also offer Bluetooth[®] connectivity to easily connect iOS and Android devices to the printer.



Solutions for the Workplace

There are so many uses for labels around the office. In addition to address labels for envelopes and packages, identify the contents of files and storage boxes. Label shelves so items are returned to the correct place. The black/red² printing capability enables essential information to be highly visible, such as valid-on dates on visitor badges. The continuous film rolls are also ideal for indoor signage, helping facilities managers create custom signs on demand.



Visitor badges



Postage labels



Document filing



Indoor signage

Solutions for Logistics and Warehousing

In busy warehouses and mail rooms, accurate and timely labeling of packages, envelopes and product cartons is essential to ensure the smooth running of all logistics operations. Using red² print on handling labels ensures this crucial information is noticed, while barcodes can be quickly generated as-and-when required.



Handling labels



Temporary signage



Shipping labels



Product packaging

Solutions for Retail

Conveying product pricing and any special offers to shoppers quickly is crucial for the retail sector. Print pricing labels for product tags, that can also include barcodes. And use red² print on to highlight special offers, price mark downs, or promotions by creating eye-catching indoor signage.



Pricing/Barcode labels



Promotion signage



Solutions for Restaurant and Food Service

On-demand label printing is a critical part of the food industry, such as highlighting allergen information to consumers, showing use-by/best-before dates, and product pricing, including EAN-8 / EAN-13 barcodes.

The Brother QL-820NWB and QL-820NWBc, with their stand-alone label printing function, are ideal for countertop use and printing labels on demand and are great for printing Made-Ready-Discard (MRD)/food rotation labels on demand. In addition, takeout stores can print details of orders, including address information where delivery is required.

Save time spent handwriting labels; ensure every label's consistent and 100 percent legibility.



Takeout orders



Shelf-edge labelling



DK Supplies for QL-800 Series Professional Label Printers

Wide range of labels available in paper and plastic film material, pre-sized labels or continuous rolls

Die-Cut Paper Labels:

Item Number	Description	Uses	Label Size	Color	Labels per Roll
DK-1201	Standard Address	Postcard addresses, standard envelopes, binders, small packages, other mail	1.1" x 3.5" (29mm x 90.3mm)	Black on White	400
DK-1202	Shipping	Flat envelope addresses, binders, medium-size packages, storage boxes, other mail	2.4" x 3.9" (62mm x 100mm)	Black on White	300
DK-1203	File Folder	File folders	0.66" x 3.4" (17mm x 87.1mm)	Black on White	300
DK-1204	Multi-Purpose / Return Address	Envelope return addresses	0.66" x 2.1" (17mm x 54.3mm)	Black on White	400
DK-1208	Large Address	Files folders, flat envelopes, binders, storage boxes	1.4" x 3.5" (38mm x 90.3mm)	Black on White	400
DK-1209	Small Address	Postcard addresses, standard envelopes, binders, small packages, other mail	1.1" x 2.4" (28.9mm x 62mm)	Black on White	800
DK-1218	Round	Large microscope specimen samples	0.94" diameter (24mm)	Black on White	1,000
DK-1219	Round	Small microscope specimen samples	0.47" diameter (12mm)	Black on White	1,200
DK-1221	Square	Large microscope specimen samples	0.9" Square (23mm)	Black on White	1,000
DK-1234 ⁸	Adhesive Name Badge	Visitor/Attendee Name Badge	2.3" x 3.4" (60mm x 86mm)	Black on White	260
DK-1240 ⁹	Large Multi-Purpose	Flat envelope addresses, binders, large-size packages, storage boxes, other mail	1.9" x 4" (50.5mm x 101mm)	Black on White	600
DK-1241 ⁹	Large Shipping	Flat envelope addresses, binders, large-size packages, storage boxes, other mail	4" x 6" (101mm x 152mm)	Black on White	200
DK-3235	Removable adhesive ^{10,11}	Removable MRD/Food Safety	2.1" x 1.1" (54mm x 29mm)	Black on White	800
Film Labels:					
DK-1207	CD/DVD Labels	CD labels	2.2" diameter (58.2mm)	Black on White	100

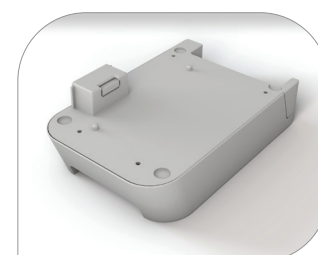
Continuous Length Tapes

Item Number	Description	Uses	Label Size	Color	Labels per Roll
DK-2251 ¹⁰	Two-Color	Pricing, signage, name badge, GHS labels, safety signs, allergy alerts	2.4" x 50' (62mm x 15.2m)	Red/Black on White	—
DK-2205	Wide Width	Flat envelope addresses, binders, medium-size packages, storage boxes, other mail	2.4" x 100' (62mm x 30.4m)	Black on White	—
DK-2210	Medium Width	Binder spines, postcards, standard envelopes, small packages, other mail	1.1" x 100' (29mm x 30.4m)	Black on White	—
DK-2214	Narrow Width	Video spines, file folders	0.47" x 100' (12mm x 30.4m)	Black on White	—
DK-2223	Wide Width	Flat envelope addresses, binders, medium-size packages, other mail	2.0" x 100' (50mm x 30.4m)	Black on White	—
DK-2225	Medium Width	Flat envelope addresses, binders, small packages, postcards, other mail	1.5" x 100' (38mm x 30.4m)	Black on White	—
DK-2243 ⁸	Extra-Wide Width	Flat envelope addresses, binders, storage boxes, large-size packages, banners, signs	4" x 100' (101mm x 30.4m)	Black on White	—
DK-N5224	Wide Width	Non-adhesive, for name badges	2.1" x 100' (54mm x 30.4m)	Black on White	Approx 333 badges
Film Tapes:					
DK-2211	Medium (White)	Storage boxes, signs, displays	1.1" x 50' (29mm x 15.2m)	Black on White	—
DK-2212	Wide (White)	Storage boxes, signs, displays	2.4" x 50' (62mm x 15.2m)	Black on White	—
DK-2113	Wide (Clear)	Large window signs, wide envelopes	2.4" x 50' (62mm x 15.2m)	Black on Clear	—
DK-2606	Wide (Yellow)	Storage boxes, signs, displays	2.4" x 50' (62mm x 15.2m)	Black on Yellow	—
Removal Paper Tapes:					
DK-4205	Wide (White)	Name badges, storage boxes	2.4" x 100' (62mm x 30.4m)	Black on White	—
DK-4605	Wide (Yellow)	Name badges, storage boxes	2.4" x 100' (62mm x 30.4m)	Black on Yellow	—

Accessories

Optional rechargeable battery unit (PA-BU-001)

This li-ion rechargeable battery unit mounts to the base of the Brother QL-810W, QL-810Wc, QL-820NWB and QL-820NWBc to offer label printing away from power sources. This makes it ideal for use on rolling carts, or for exhibition badge printing. Features a fast-charge of under 2 hours 30 minutes, and provides printing of over 2,000 labels during continuous printing on a full battery charge.¹²



Specifications

QL-800

QL-810W/c

QL-820NWB/c

Printing / Media

Printing technology	Direct Thermal	
Maximum Resolution (dpi)	300 x 600 (Superfine Mode)	
Maximum Print Speed (labels per min.) ¹	Up to 93 labels per minute	Up to 110 labels per minute
Print Black/Red labels using DK-2251	Yes	
Tape Sizes	Die-cut and Continuous	
Maximum Tape Width (inches)	2.4"	
Maximum Print Width (inches)	2.3"	
Maximum Label Length	3 feet	
Cutter	Auto	
Cutter Life	up to 300,000 (die-cut labels) 150,000 (continuous labels)	

Connectivity

USB	USB version 2.0 full-speed	
USB host capability		Yes, on QL-820NWB only (HID Class)
Bluetooth® wireless technology	Yes	
Bluetooth® profiles		SPP(Serial Port Profile) OPP(Object Push Profile) BIP(Basic Imaging Profile) on QL-820NWB only HCRP(Hard Copy Cable Replacement Profile) iAP/(MFI supported) profile
Wireless LAN		IEEE802.11b/g/n
Wireless LAN / Wired LAN security (Infrastructure mode)		WEP, WPA-PSK/WPA2-PSK (TKIP/AES), LEAP (CKIP), EAP-FAST (TKIP/AES), PEAP (TKIP/AES), EAP-TTLS (TKIP/AES), EAP-TLS (TKIP/AES), WPA3 (QL-810Wc and QL-820NWBc only)
AirPrint		Yes
Wired LAN		10/100 Base-TX

LCD

Type		320x120 dot graphic LCD with backlight
------	--	---

Mobile Device Compatibility

Software/App ³	Brother iPrint&Label, free app download for USBtoGo printing from your Android™ mobile device	AirPrint®, Brother iPrint&Label, free app download for wireless printing from your Apple® or Android™ mobile device
---------------------------	---	--

Memory

Flash (for label templates)		6MB
Locations (for label templates)	99	255

Power

Power	120V ~ 60Hz 1.7A	100-240V - 50/60Hz 1.5A
ENERGY STAR® certified	Yes	
Battery (optional accessory)		Optional Li-ion Battery (PA-BU-001)
Battery print yield		Provides printing of over 2,000 black text labels during continuous printing on a full battery charge via WiFi
Battery charging time		Less than 2 hours 30 minutes

Specifications

QL-800

QL-810W/c

QL-820NWB/c

Weights / Dimensions

Dimensions	4.9" x 5.6" x 8.4"	5.0" x 5.7" x 9.2"	
Weight	2.5 lbs.	2.4 lbs.	2.5 lbs.

Software / Firmware

Operating System	Windows Vista®, Windows® 7, Windows® 8/8.1, Windows® 10; Mac OS X 10.10.5 - 10.12.x	Windows Vista®, Windows® 7, Windows® 8/8.1, Windows® 10; Server 2008/2012; Mac OS X 10.10.5 - 10.12.x	
SDK availability (visit http://www.brother-usa.com/lp/civ/home.aspx)	b-PAC (for Windows)	b-PAC (for Windows) Brother Print SDK for Android™ Brother Print SDK for iPhone/iPad (for iOS)	
Supported printer commands	Raster	Raster ESC/P P-touch Template	
Barcode symbologies (using P-touch Editor)	CODE39, CODE128, UCC/EAN128(GS1-128), ITF(I-2/5), CODABAR(NW-7), UPC-A, UPC-E, EAN13, EAN8, ISBN-2(EAN13 AddOn2), ISBN-5(EAN13 AddOn5), Laser Barcode, POSTNET, RSS(RSS14 Standard, RSS14 Truncated, RSS14 Stacked, RSS14 Stacked Omni, RSS Limited, RSS Expanded, RSS Expanded Stacked), PDF417(Standard, Truncate, Micro), QR code(Model1, Model2, Micro), Data Matrix(ECC Square, ECC Rectangular), MaxiCode(Model2, Model3, Model4, Model5)RSS symbols / CODE93 / POSTNET / UPC/EAN EXTENSION / MSI / QR Code (model 1, model 2, micro QR)PDF417 (Standard, Truncate, Micro)PDF417 / Data Matrix(ECC200 Square, ECC200 Rectangular) / MaxiCode / Aztec / IMB		
Barcode symbologies (Built-in printer firmware)		CODE39, CODE128, UCC/EAN-128(GS1-128), ITF(I-2/5), CODABAR(NW-7), UPC-A, UPC-E, EAN13(JAN13), EAN8, GS1 DataBar(RSS)(GS1 DataBar Omnidirectional, GS1 DataBar Truncated, GS1 DataBar Stacked, GS1 DataBar Stacked Omnidirectional, GS1 DataBar Limited, GS1 DataBar Expanded, GS1 DataBar Expanded Stacked), PDF417(Standard, Truncate, Micro), QR Code(Model 1, Model 2, Micro), Data Matrix (ECC200 Square, ECC200 Rectangular), MaxiCode, CODE93, POSTNET, UPC-E EXTENTION	
Internal fonts		Bitmap fonts: Letter Gothic Bold, Helsinki, Brussels, San Diego, Brougham Font sizes: 24, 32, 48 dots Outline fonts: Letter Gothic Bold, Helsinki, Brussels Font sizes: 33-400 dots (22 sizes)	
Date/Time Stamp	PC Generated		Internal Time/Date, PC generated

Included items

In the box	Software, USB Cable, Power Cord, Quick Setup Guide, Documentation, Starter rolls: DK-1201 Die-cut Standard Address Labels (100 labels), plus DK-2251 2.4" (62mm) Continuous Length Black/Red on White Paper Tape 16.4 ft. (5m)	Software, USB Cable, AC Adapter, Quick Setup Guide, Documentation, Starter rolls: DK-1201 Die-cut Standard Address Labels (100 labels), plus DK-2251 2.4" (62mm) Continuous Length Black/Red on White Paper Tape 16.4 ft. (5m)
------------	--	--

brother

at your side



Microsoft Excel, Outlook, Windows and Word are trademarks of the Microsoft group of companies.

Use of the Made for Apple and Works with Apple badges means that an accessory has been designed to connect specifically to the Apple product(s) identified in the Made for Apple badge and to work specifically with the technology identified in the Works with Apple badge, and has been certified by the developer to meet Apple performance standards. Apple is not responsible for the operation of this device or its compliance with safety and regulatory standards.

iPad, iPhone and iPod, AirPrint and Mac are trademarks of Apple Inc., registered in the U.S. and other countries and regions.

iOS is a trademark or registered trademark of Cisco in the U.S. and other countries and is used under license.

Wi-Fi® and the Wi-Fi CERTIFIED™ logo are trademarks of the Wi-Fi Alliance®.

The Bluetooth word mark and logos are owned by the Bluetooth SIG, Inc. and any use of such marks by Brother Industries, Ltd. is used under license.

Android is a trademark of Google LLC.

1. Based on using standard address labels, black text only, at 300 X 300 dpi.
2. Requires DK-2251 continuous roll and P-Touch Editor for black and red printing.
3. Free app download and wireless internet connection required. Compatibility may vary by device and operating system.
4. Sold separately.
5. Black print capability only. Use P-touch Editor for black and red printing.
6. Additional download required. Software app compatibility may vary based on operating system. App availability may vary based on country.
7. iOS and macOS only supports black print when using the default AirPrint function, however red print capability is available from iOS devices when using apps developed using the Brother Software Development Kit.
8. Compatible with the Brother QL-800 and 1100 series.
9. 4" wide format format DK supplies are compatible only with the Brother QL-1100, QL-1100c, QL-1110NWB, and QL-1110NWBc series.
10. For use with Brother QL-800, QL-810W, QL-810Wc, QL-820NWB, and QL-820NWBc.
11. Removeable adhesive labels can be cleanly removed from most smooth, flat surfaces.
12. Continuous printing using Wi-Fi when fully charged.

© 2023 Brother International Corporation
200 Crossing Boulevard, Bridgewater, NJ 08807

All other brand names and product names are registered trademarks or trademarks of their respective companies. Images are for illustrative purposes only. All specifications are subject to change without notice.