

INSIGNIA™

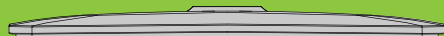
26" 1080p LED TV
QUICK SETUP
GUIDE
 NS-26E340A13

Thank You

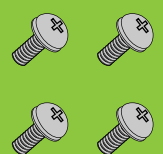
for purchasing this fine Insignia television.
 We hope you enjoy the quality and reliability
 of this product for years to come.



Remote control
and 2 AAA batteries



TV stand



B4 type (18 mm length) (4pcs)

WE ARE GOING GREEN!

A copy of your *User Guide* is not provided in the box but is available online.
 Go to www.insigniaproducts.com, click **Support & Service**, enter your model number in the *Product Search* field, then click **Search**.



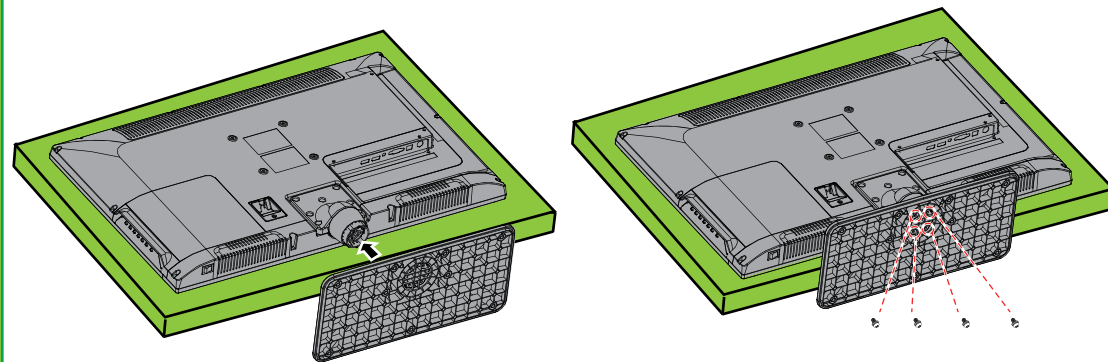
Front features



Power indicator Remote control sensor

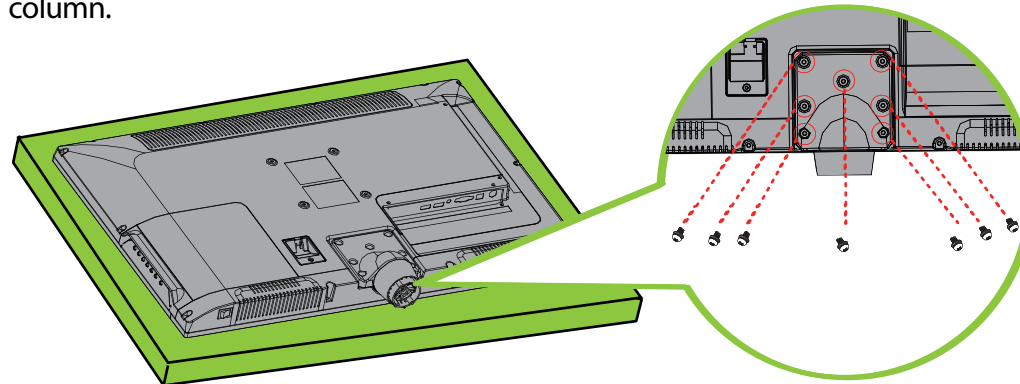
Installing the stand

- 1 Carefully place your TV face-down on a cushioned, clean surface to protect the screen from damages and scratches.
- 2 Secure the TV stand to the TV with the four provided screws.



Installing a wall-mount bracket

- 1 Carefully place your TV face-down on a cushioned, clean surface to protect the screen from damages and scratches.
- 2 Remove the seven screws that secure the stand column, then remove the stand column.



- 3 Attach the wall-mount bracket to your TV using the mounting holes on the back of your TV. See the instructions that came with the wall-mount bracket for information about how to correctly hang your TV.

Warning

This apparatus is intended to be supported by a UL Listed wall-mount bracket.

Identifying cables

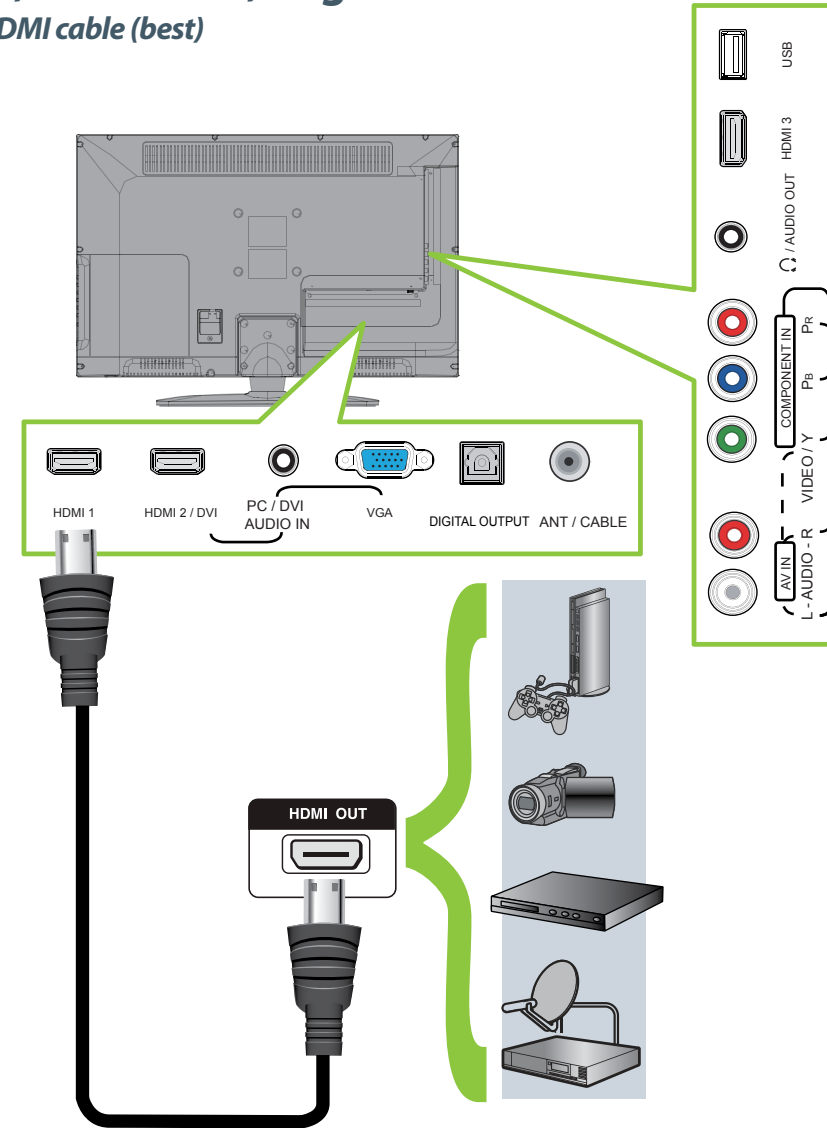
Your TV has several connection types for connecting devices. For the best video quality, connect a device to the best available connection.

Connection type	Video quality	Cable connector
HDMI video/audio	Best	
		OR
Component video and analog audio	Better	
		OR
Composite video and analog audio	Good	

You can use the **HDMI2/DVI** jack to connect a DVI device to your TV. You need to attach an HDMI-to-DVI adapter to the end of the HDMI cable that connects to the DVI device's jack.

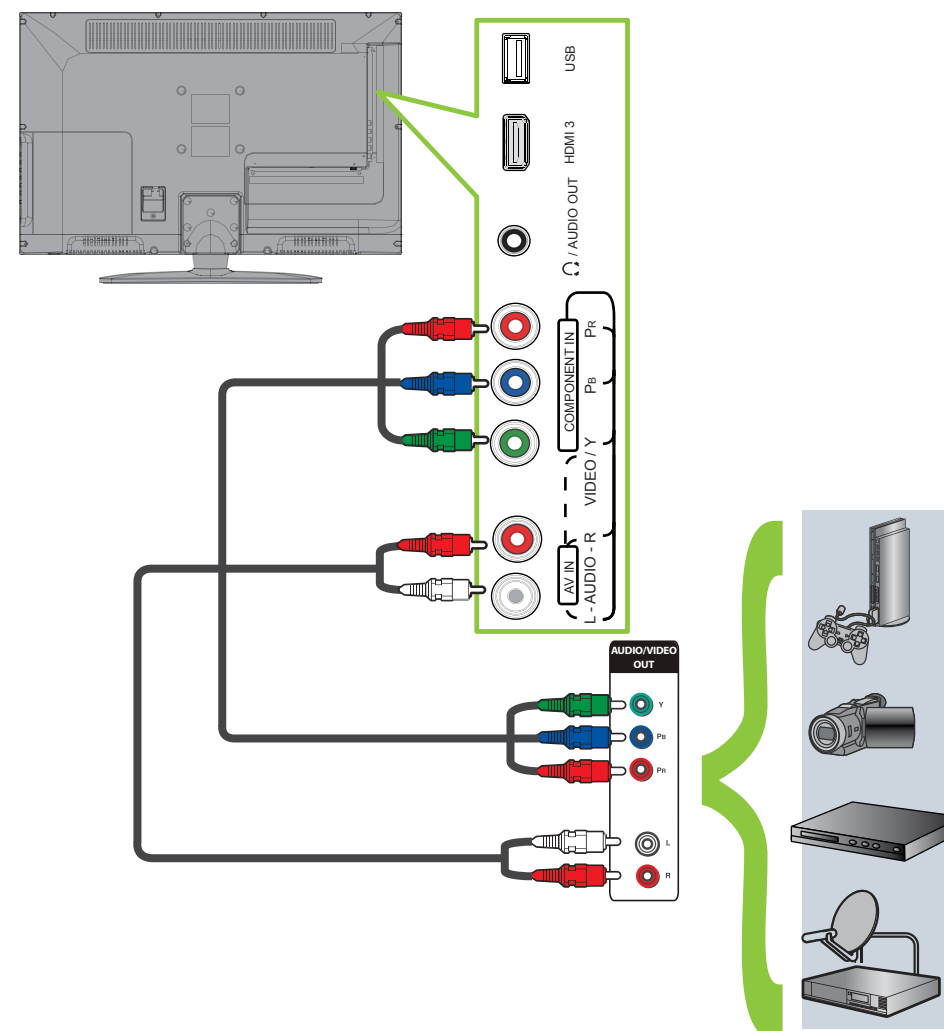
Connecting a DVD or Blu-ray player, cable box, satellite receiver, camcorder, or game station

Using an HDMI cable (best)



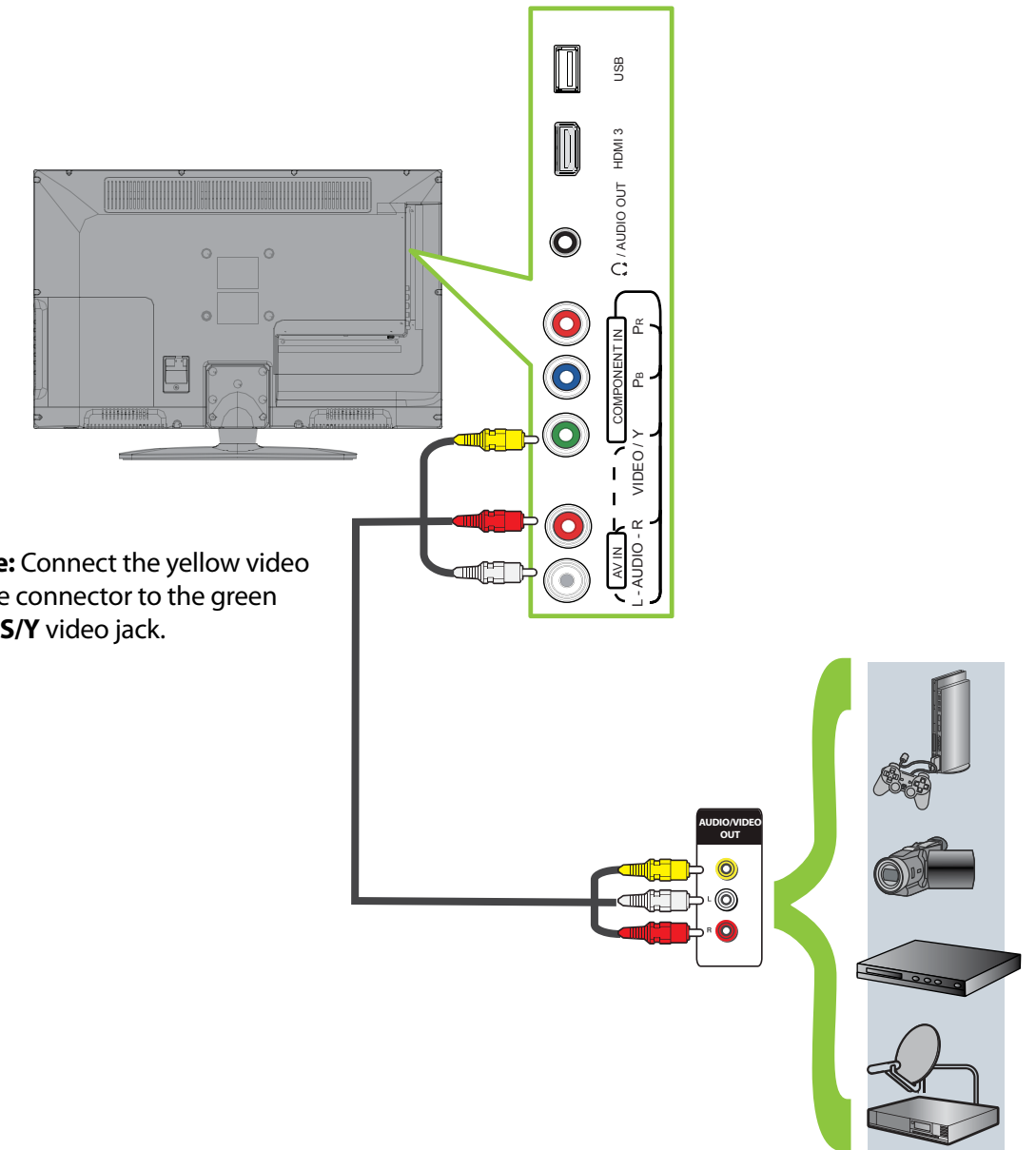
Note: Cable is not provided.

Using component cables (better)



Note: Cables are not provided.

Using an AV cable (good)

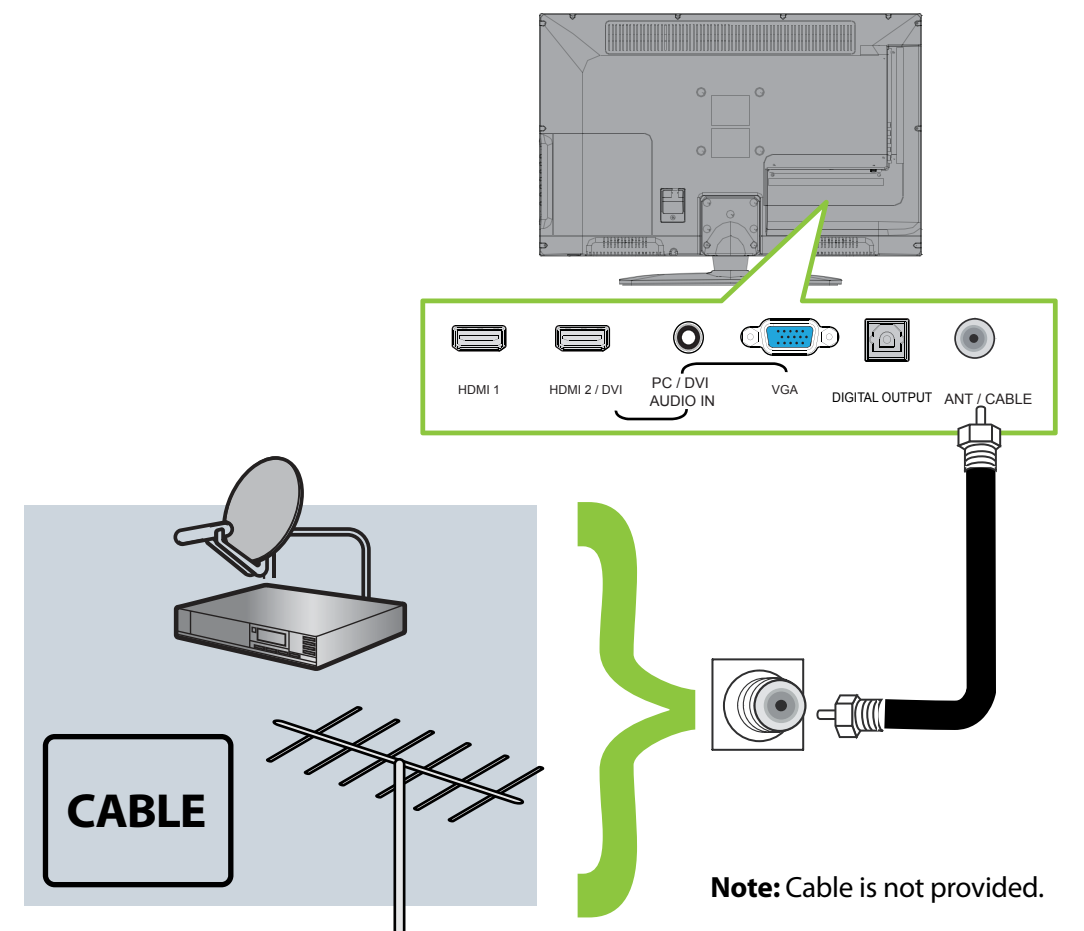


Note: Connect the yellow video cable connector to the green **CVBS/Y** video jack.

Note: Cable is not provided.

Connecting an antenna/cable wall jack

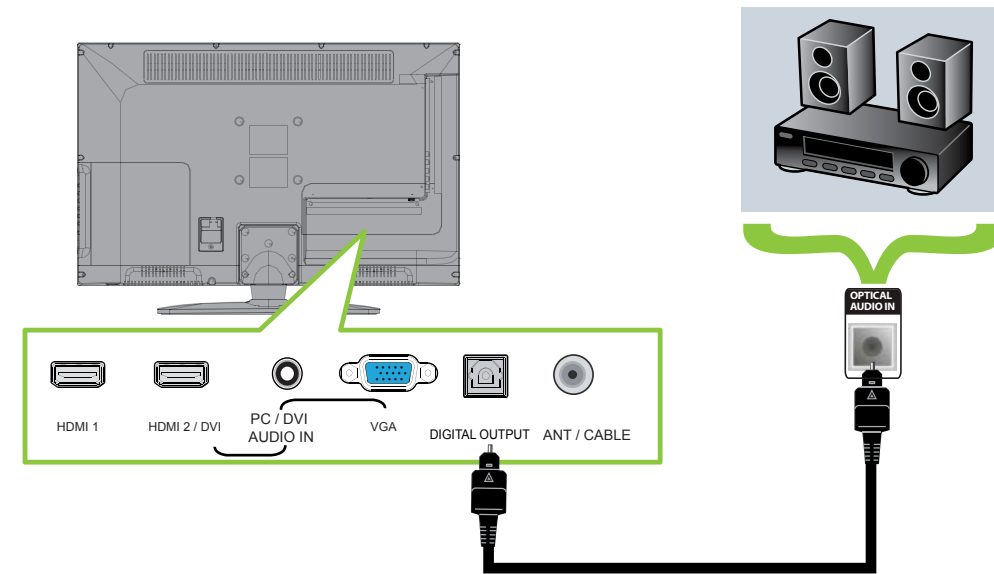
Connect a coaxial cable to the **ANT/CABLE** jack on the back of your TV and to the antenna/cable wall jack.



Note: Cable is not provided.

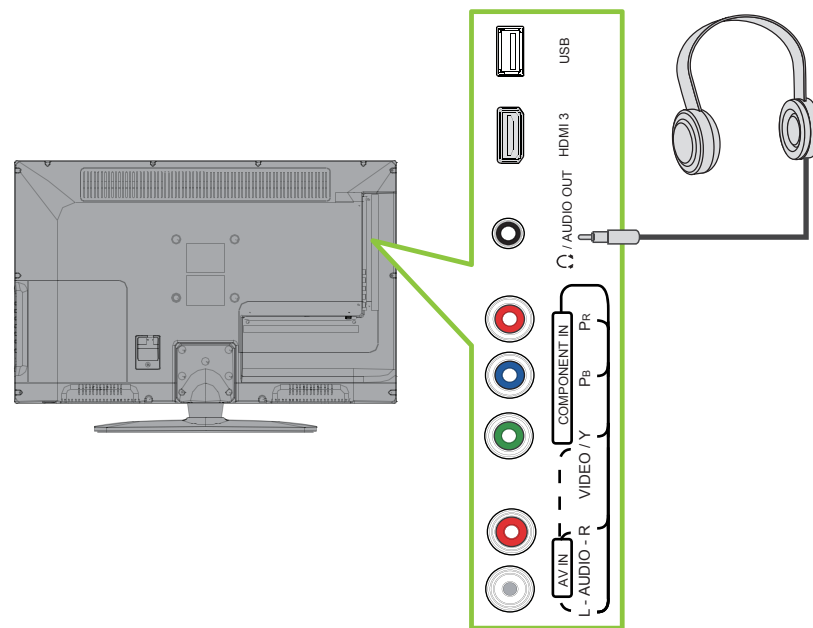
Connecting a Home Theater System

Using digital audio



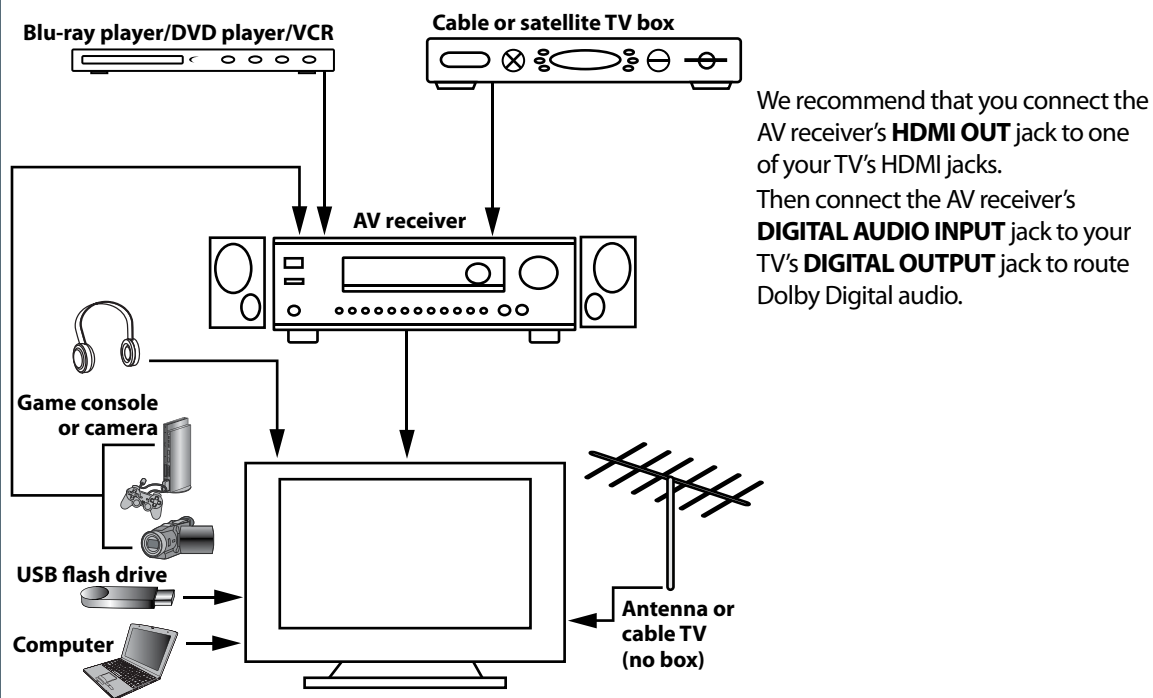
Note: Cable is not provided.

Connecting headphones



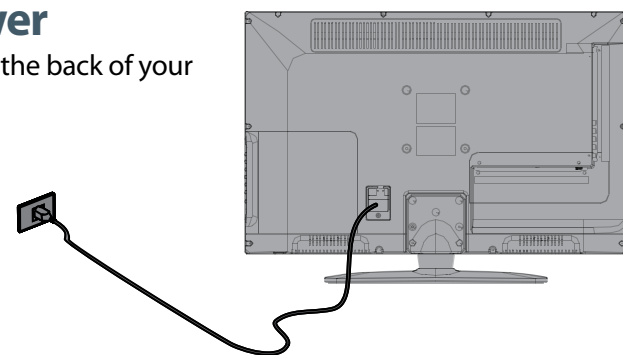
Note: Headphones are not provided.

Connecting a home theater system with multiple devices



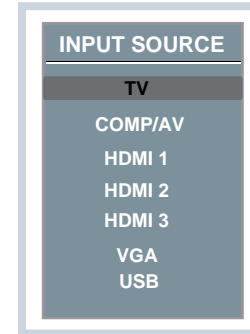
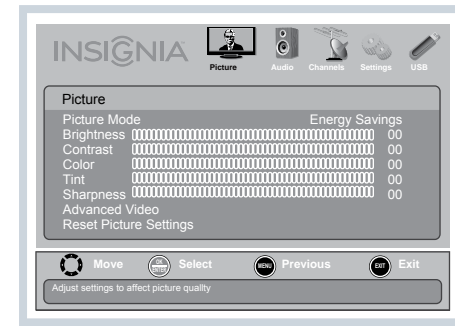
Connecting power

Plug the AC power cord on the back of your TV into a power outlet.



Setting up and using your remote control

- 1 Press the release button on the back of the remote to remove the battery compartment cover.
- 2 Insert two AAA batteries into the battery compartment. Make sure that the + and - symbols on the batteries match the + and - symbols in the battery compartment.
- 3 Replace the cover.



Aspect ratio options

- Normal:** Displays the original 4:3 aspect ratio with vertical black bars on the left and right side of the screen.
- Zoom:** Expands the image to fill the screen. The top and bottom of the image may be cropped.
- Wide:** Use this option to view content recorded in a 16:9 (wide-screen) aspect ratio.
- Cinema:** Stretches the image at the edges, but keeps a clear image in the center.
- Auto:** Automatically adjusts the image based on the screen size and the TV program. **Note:** Auto is only available when **Auto Zoom** in the **CHANNELS** menu is set to **On**.

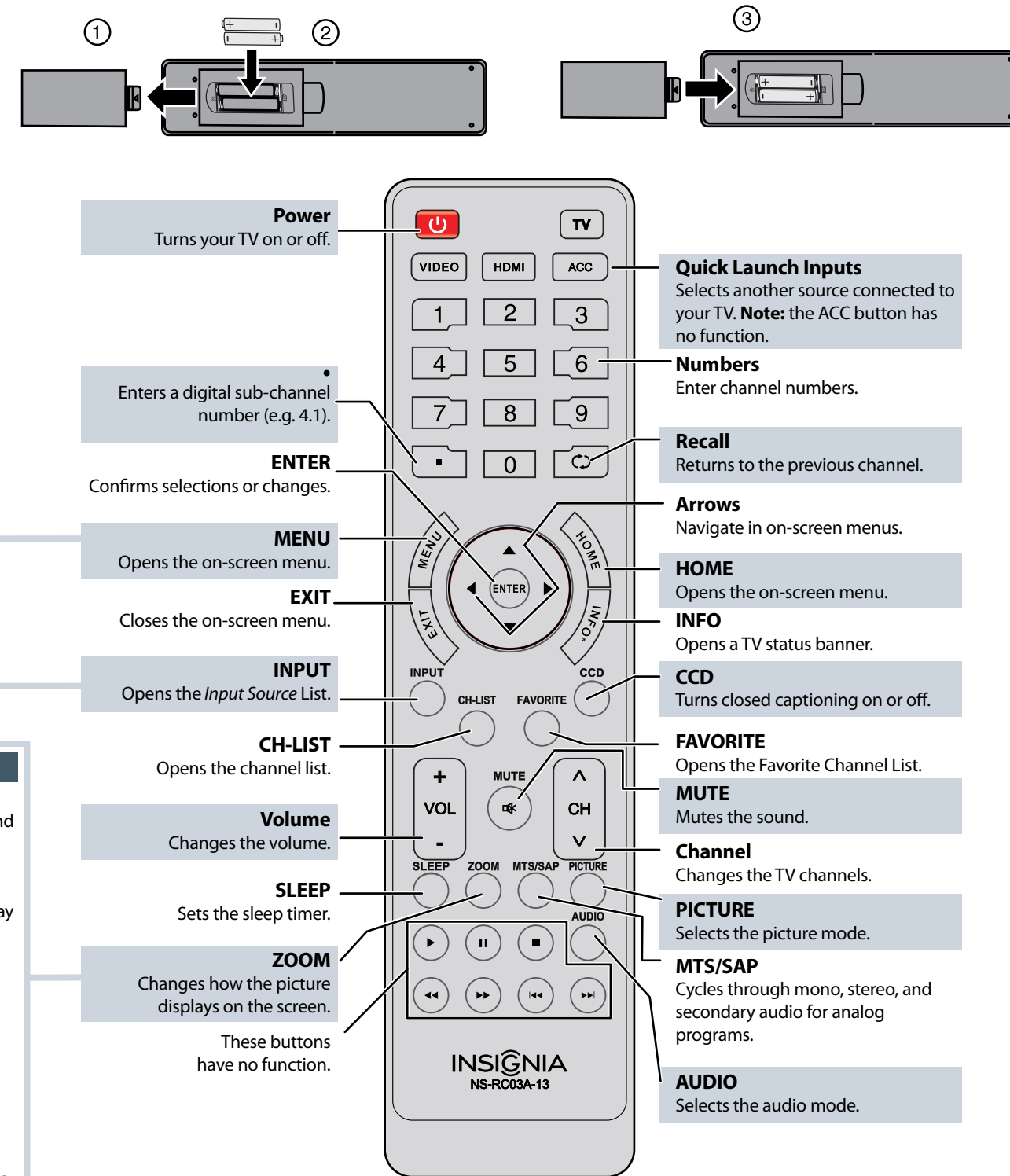
Programming your remote control

To program your universal remote control to work with your new Insignia TV, see the table for common codes. If you have problems programming your remote or need a different remote control code, visit <http://www.insigniaproducts.com/remotecodes> for the latest remote control code information.

Universal remote TV codes												
Universal remote controls				Cable/Satellite/Set-top boxes								
One for All	Philips	RCA	Sony	Cablevision	Charter	Comcast	Cox	Direct TV	Dish Network	Time Warner	Tivo	Verizon
0054	0198, 0490	135	068, 069, 078, 096, 100, 164, 168, 229, 026	068, 069, 078, 096, 100, 164, 168, 229, 026	2002, 1204, 1423, 1517, 0171, 1963, 0463, 1463, 0842, 1326, 167, 415, 424, 450, 456, 461, 507, 523, 567, 577, 586	10171, 11204, 11326, 11463, 11517, 11641, 11780, 11785, 11892, 11963, 12002	1326, 1463	10171, 11204, 11326, 11517, 11564, 11641, 11963, 12002	720	400, 450, 461, 456, 10463, 1463, 0463	0091	0198, 0490

Turning on your TV for the first time

- 1 Connect your TV's power cord to a power outlet, then press **Power**. The *Choose Your Menu Language* screen opens.
- 2 Press **▲** or **▼** to highlight a language, then press **ENTER**. The *Choose Your Time Setting* screen opens.
- 3 Press **◀** or **▶** to select **Auto** or **Manual**, then press **ENTER**. If you select **Auto**, the date and time are set automatically from a digital TV signal. If you select **Manual**, you can manually set the date and time. Press **ENTER**.
- 4 Press **▲** or **▼** to highlight **Home Mode** or **Retail Mode**, then press **ENTER**. If you select **Retail Mode**, a message asks you to confirm your selection. Select **Yes** or **No**. Retail mode is not an energy-saving mode.
- 5 Press **▲** or **▼** to highlight **Antenna**, **Cable**, or **Satellite Box**, then press **ENTER**.
 - A. If you select **Antenna**, your TV scans for available channels. The scan may take several minutes.
 - B. If you select **Cable**, a message asks if you have a cable box.
 - Select **No** if no cable box is connected. Your TV scans for available channels. The scan may take several minutes.
 - Select **Yes** if a cable box is connected. A message asks how you connected the cable box to your TV:
 - Select **AV, Component, or HDMI** if you connected a cable box to your TV using one of these cables. Read the message, then press **ENTER** to close the wizard.
 - Select **Coaxial** if you connected a cable box to your TV using a coaxial cable. Read the message, then press **ENTER** to start the channel scan (VHF channels only).
 - C. If you select **Satellite Box**, a message asks how you connected the satellite box to your TV:
 - Select **AV, Component, or HDMI** if you connected a satellite box to your TV using one of these cables. Read the message, then press **ENTER** to close the wizard.
 - Select **Coaxial** if you connected a satellite box to your TV using a coaxial cable. Read the message, then press **ENTER** to start the channel scan (VHF channels only).



INSIGNIA™

One-year limited warranty
Visit www.insigniaproducts.com for details.

Need additional help?
See your **Online User Guide!** This comprehensive guide includes everything from basic how-to steps to more advanced features.

Check out our online **community forum** at www.insigniaproducts.com for helpful information from other Insignia TV owners.

We're here for you
www.insigniaproducts.com
For customer service, call:
877-467-4289 (U.S./Canada markets)

© 2012 BBY Solutions, Inc.
All rights reserved. INSIGNIA is a trademark of BBY Solutions, Inc. Registered in some countries. All other products and brand names are trademarks of their respective owners.
Distributed by Best Buy Purchasing, LLC
7601 Penn Avenue South, Richfield, MN USA 55423-3645

WE ARE GOING GREEN!

A copy of your *User Guide* is not provided in the box but is available online. Go to www.insigniaproducts.com, click **Support & Service**, enter your model number in the **Product Search** field, then click **Search**.

