

TWIN-TUB WASHING MACHINE



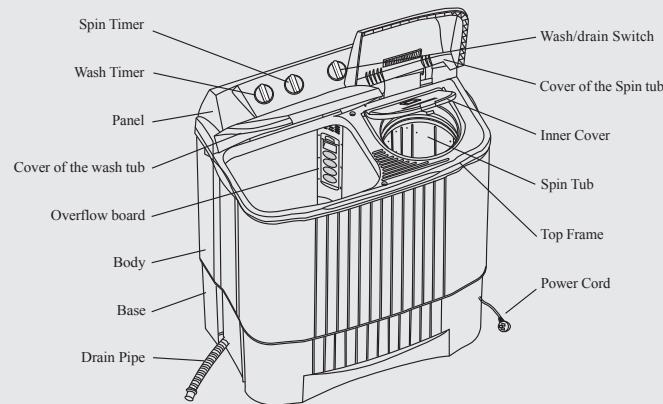
INSTRUCTION MANUAL

Made In China

INTRODUCTION:

This twin-tub washing machine has the function of spin, Euro streamline shape design, modern base, fresh sight design and elegance. Suspended pulsator with scrubbing function and high quality filter design enhance its ability of cleanness. The spin function can efficiently prevent the mildewing in the tub after the machine is not used for long time.

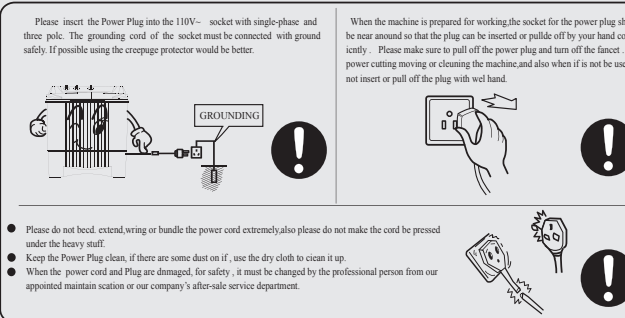
NAME OF PARTS:



Accessories:



NOTES:

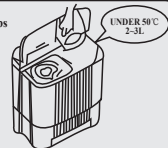


TROUBLE SHOOTING GUIDE

THE REMANT WATER IS FROZEN

When the left water in tub freezes, pour in warm water (less than 50℃) and keep the water in the tubs for about 10 minutes, then turn the pulsator by hand. You can use the machine after it can be drained.

Please note: In the cold season, drain the water completely after every time you use it, to avoid the freezing of the left water.



TABLES

STYLE	TWIN-TUB WASHING MACHINE	
MODEL NO.	EP21684	
POWER SOURCE	RATED VOLTAGE: 110V	RATED FREQUENCY: 60Hz
RATED WASH CAPACITY	5.0KG(11LBS)	
RATED SPIN-DRY CAPACITY	3.0KG(6.6LBS)	
RATED INPUT POWER (W)	WASH: 300W SPIN-DRY: 110W	
WASHING DECIBEL (dB)	58 (RATING A) (VOLUME POWER RATING)	
SPIN-DRYING DECIBEL (dB)	67.2 (RATING A) (VOLUME POWER RATING)	
DIMENSION (mm)	695X410X760mm	
WEIGHT	About 17KG(37.5LBS)	

PACKING LIST

DESCRIPTION	QUANTITY	WHERE YOU CAN FIND
● INSTRUCTION MANUAL	● 1	● DOCUMENTS BAG
● QUALITY CERTIFICATE	● 1	● DOCUMENTS BAG
● WATER INLET HOSE	● 1	● WASH TUB
● INNER LID	● 1	● WASH TUB
● TWIN-TUB WASHING MACHINE	● 1	●

Warm Notice

Children should be supervised to ensure that they do not play with the appliance.
This appliance is not intended for use by persons (including children) with reduced physical, sensory or mental capabilities, or lack of experience and knowledge, unless they have been given supervision or instruction concerning use of the appliance by a person responsible for their safety.
All the specification and features was correct at the time of this manual printed, some model might not support all the feature stated in the instruction manual.
Remarks: Please use clean water to wash out the spin & wash tube before first time use, the washing machine may contain litter water during the testing progress.

Washing instructions:

Spin

1. Load the laundry equally into the spin tub.
2. Put the spin tub accurately. Turn off spin tub and dewatering cover.
3. Choosing proper spin time on the basis of washing, then spin.

SELECT OF THE SPIN TIME					
Washing	Washable suit	Chemical Fiber, linen, delicate	Woolen Suit	T-Shirt	Blanket and sheet
Dewatering Time (Minute)	About 1	About 2	2-3	3-5	About 5

- During the spin time, if there exists abnormal noises. Usually because of putting the cloths on the wrong place, please stop the machine and put the cloth equally. In the process of spin, Opening spin cover will pause dewatering, closing it will restart spin.

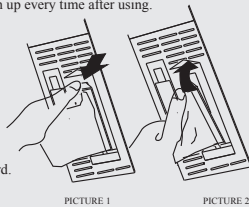
After-wash disposal

- After use, please firstly unplug the power cord from the electrical outlet in order to avoid thunderbolt.
- Please clean up net and near sundries, otherwise it will affect you. better use this machine.

Filter cleaning up

- In the process of washing, you must use filter, you need to clean up every time after using.

1. Take off the filter.
Put one hand to the relevant place, press down and take off it.
2. Clean up the net.
While the filter wetting, put it into water and then clean up.
3. Install filter.
After cleaning up, put the bottom of the filter plug into the cord.
Then press the top of it.



Washer disposal

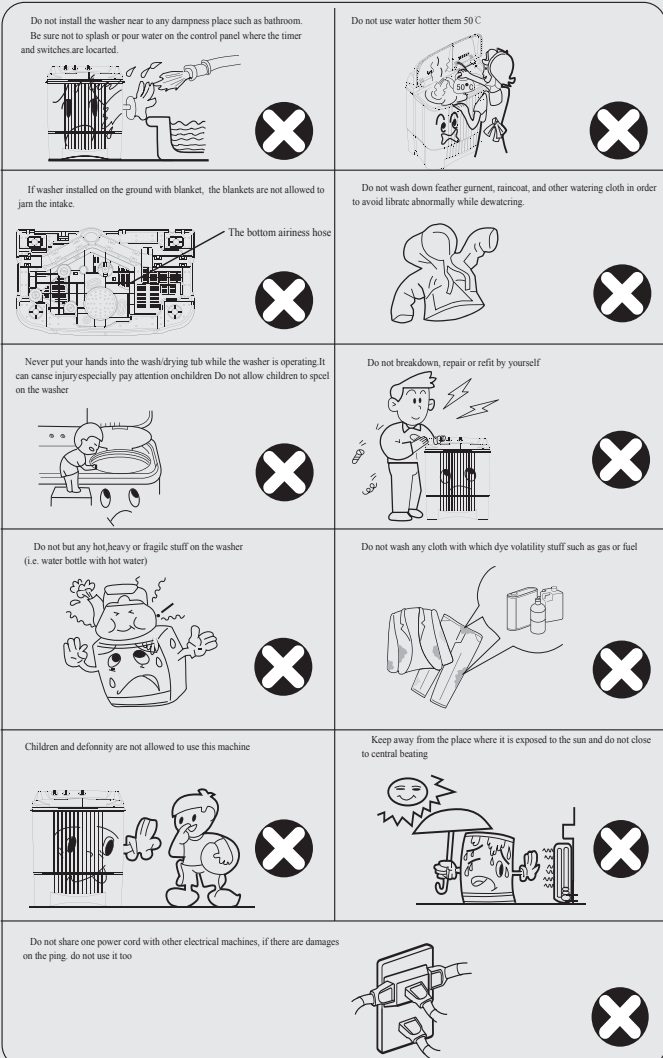
- After washing, discharge water inlet.
- Use neat soft fabric rubbing the exterior of the washer.
- Unplug the power code, hang up the power plug.
- Hang up the drain hose.
- Every time after using, you must let water flow out.
- Please do not splash or pour water on the washer.

The trouble shooting

If there are some troubles in washer, please unplug the power code and examine it for instances as follows, sometimes are not trouble, before repair by consign, please confirm again, if it does have troubles, please contact our company's service agent or after sales department.

Washer doesn't work	● Power off? ● Plug the power code? ● Are there any sundries in the pulsator? ● Put drain hose in the wrong direction? ● Is drain hose freezing? ● The front of drain hose are plugged up something?
Cannot drain	
There are abnormal noises during washing	● Bring the barre, coin or other metal materials to the wash tub
There are abnormal noises and librate acidity	● Put washer stable? ● Put cover stable? ● Are there too many water in the spin-drier tub?
The first time you use, there are little water flow out of drain hose	● It is water remained when it is examined when leaving the factory

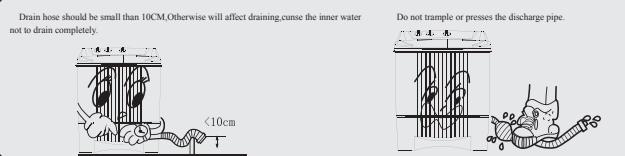
SAFEGUARDS:



Presentation:

Please install the washer according to the instruction. This is important on controlling the washing machine and keeping its safety.

The use of drain hose

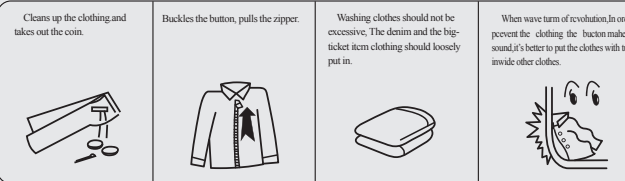


Preparation before washing

The prepare steps before washing

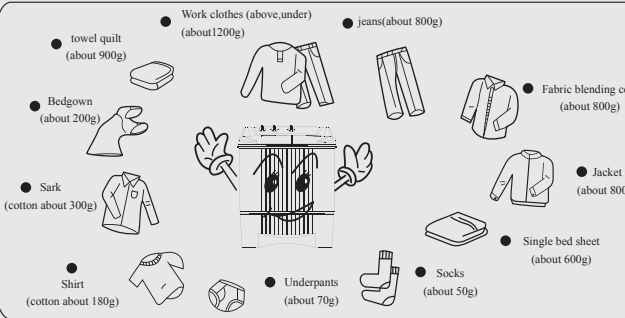
1. In order to prevent vibrations, the washing machine should be laid on smooth, horizontal, and solid ground. And keep away from the wall and other objects 5cm.
2. Connect enter hose. Turns on the water cock stroke.
3. Sure that the powers connected safety. Power source plug insertion power source plug.
4. Lay down the discharge pipe.

Notes before washing:



Wash Notice:

Reference Washing weight



The notice of washing

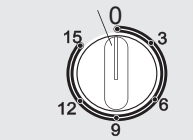
Water Level	Qty of Water	Washing Capacity	Qty of Washing Power	Current	Wash-Up	Wash Time (Min)
HIGH	46 L (16 cu. ft.)	5.0KG (11LBS)	40-5TG	Normal	Dirty Cotton and twine	10-15 Min
				Normal	Cotton and twine	7-10 Min
				Soft	Fiber Twine	2-5 Min
MIDDLE	35 L (12 cu. ft.)	2.5KG (5.5LBS)	30-48G	Normal	Dirty Cotton and twine	10-12 Min
				Normal	Cotton and twine	7-9 Min
				Soft	Fiber Twine	2-5 Min
LOW	30 L (10 cu. ft.)	1.5KG (3.3LBS)	25-40G	Normal	Dirty Cotton and twine	10-12 Min
				Normal	Cotton and twine	7-9 Min
				Soft	Fiber Twine	2-5 Min

Note: The Washing Powder should be the right amount use, in order to avoid the forth excessively to cause rinse not cleanly. Different washing powder amount used some difference, the concrete amount used also must refer to washing powder used.

Wash project

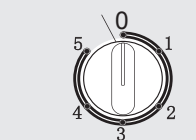
(Wash timer)

Please turn to 5 min then turn back, when <2 min



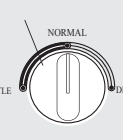
Spin timer

Please turn to 2 min then turn back, when <1 min



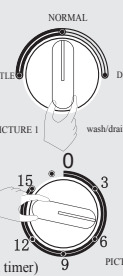
wash/drain switch

GENTLE/Normal/Drain



Washing

1. Pour water
Pours water and joins the laundry powder. When the water level achieved prearranges position, Washes the revolution, Causes the laundry powder fully to stir evenly.
2. Puts in the washings. When water volume insufficiency, Invites the make-up GENTLE.
3. Choice current of water
Chooses the current of water according to the washings is "normal" or "gentle".
4. The choice of washing time
Refers to this page "the current of water, the water level and the choice of washing time" the choice to washing time.
5. After washes had ended, will drain water revolves Niu to set at "draining water" the position.



The middle spin and the rinse (repeatedly carries on 2-3)

1. Even evenly puts in the clothing escapes in the bucket.
2. Spin (1) Press the inner spin cover in horizontally (tiew clothing also please correct to put inner spin cover)
(2) Close the spin inner/outer cover
(3) Spin approximately 2-3 minute
3. Rinse (1) The washings laying aside Washes tub in, chooses the appropriate current of water according to the washings
(2) Pours water to prearranges the water level
(3) Turn the wash timer to 2-3 min, to rinse.