

Hardware Quick Start Guide

Welcome! Let's get started.

To start using your DVR, you need the following:

- 1. A high-definition TV capable of displaying 720p or 1080p video. Look at the ports on the back of your TV to make sure it has an HDMI input.
- 2. A router with a broadband internet connection.
- 3. A mobile device (Android or iOS) to download the free HomeSafe View app.

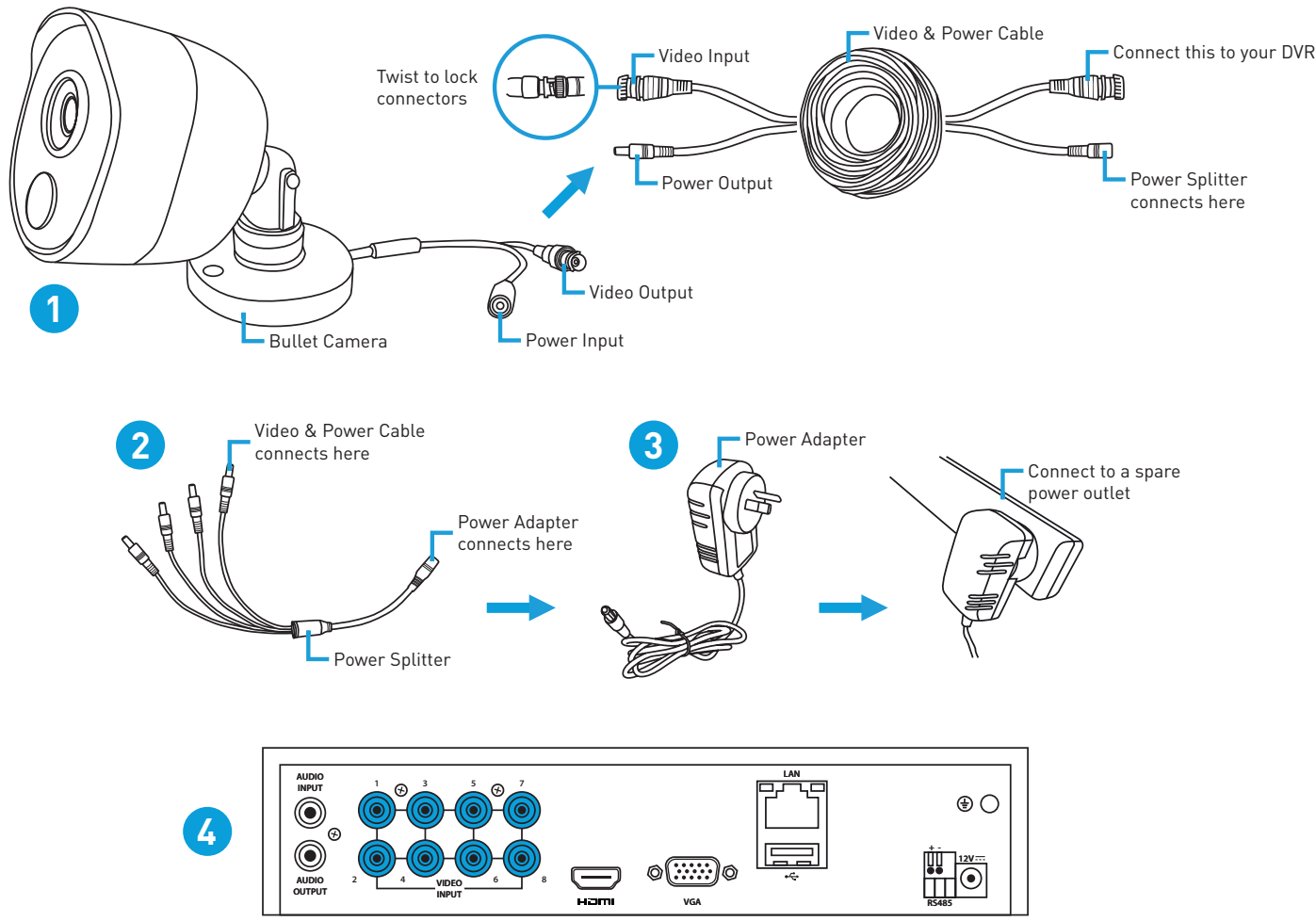
Carefully unpack each item and discard any packaging not required.



QH48_4580140618E | © Swann 2018

READ ME FIRST!

Step One: Connect your Cameras

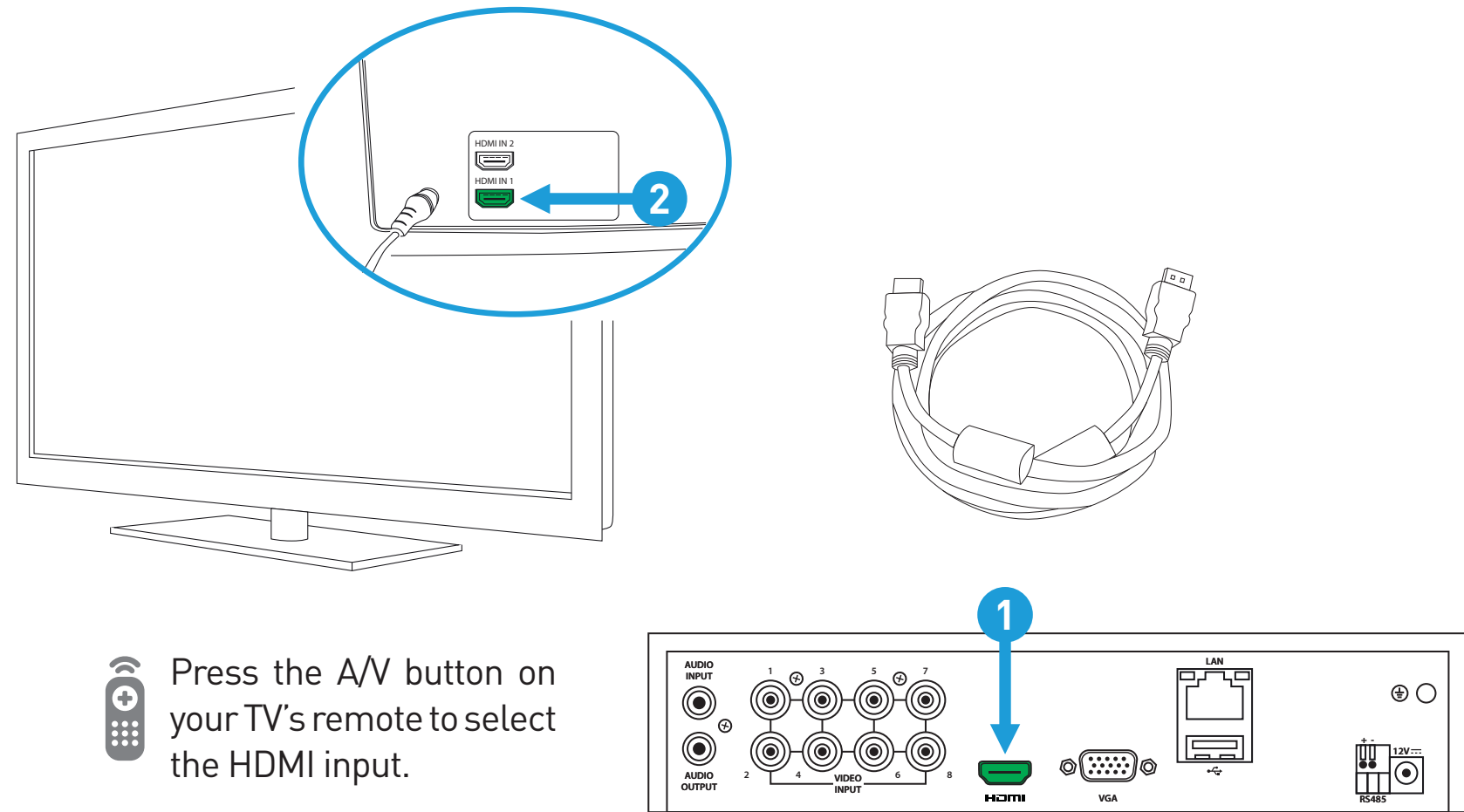


*Your DVR may include dome cameras instead of or in addition to the bullet camera. Turn over the guide for mounting instructions.

- 1. Connect the video output and power input connections on the bullet camera to the corresponding connections on the supplied video & power cable.
 - 2. Connect the supplied power splitter to the other end of the video & power cable. This provides power to multiple cameras using a single power adapter.
 - 3. Connect the other end of the power splitter to the supplied power adapter then connect the power adapter to a spare power outlet.
 - 4. Connect the video output on the video & power cable to each camera input on your DVR. Twist the connection to lock it in place.
- *The bullet camera has three points of articulation. Turn over the guide for more information.

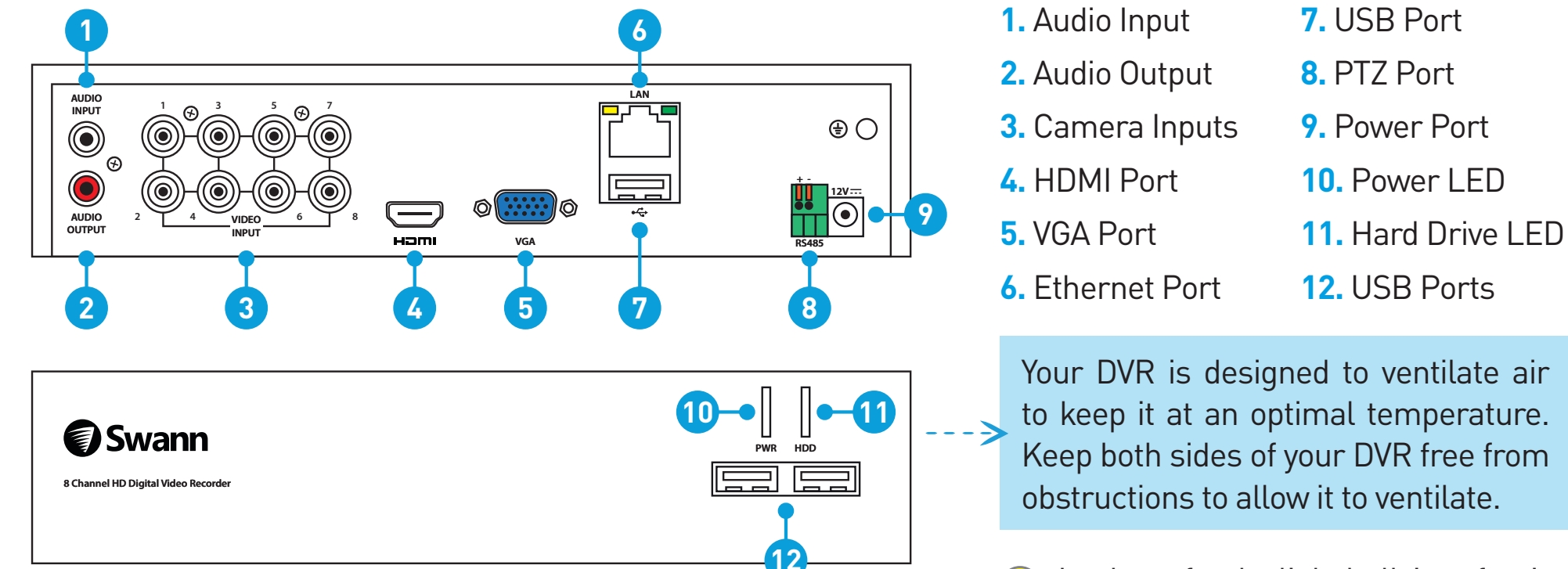
Step Four: Connect to your TV

Connect the supplied HDMI cable to the HDMI port (1) on your DVR then connect the other end to a spare HDMI input (2) on your TV. The labels on the back of your TV indicate which input you need to select when your DVR is turned on.



Getting to know your DVR

Congratulations on the purchase of your Swann DVR. This Quick Start Guide will assist you on getting your DVR up and running as soon as possible. To make sure nothing was damaged during shipping, we recommend that you connect everything and give it a try before you do a permanent installation.



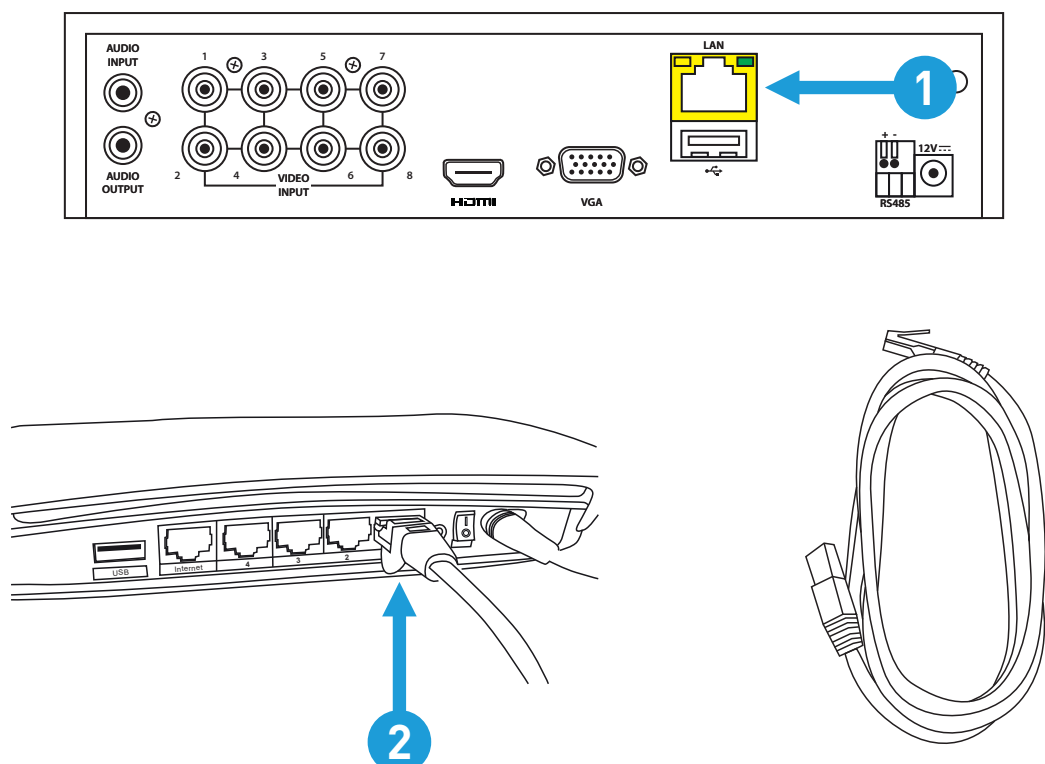
Your DVR is designed to ventilate air to keep it at an optimal temperature. Keep both sides of your DVR free from obstructions to allow it to ventilate.

Look out for the light bulb icon for tips on the operation of your DVR.

The 4 channel model has four camera inputs and four audio inputs and may differ from the illustration above.

Step Two: Connect to your Home Network

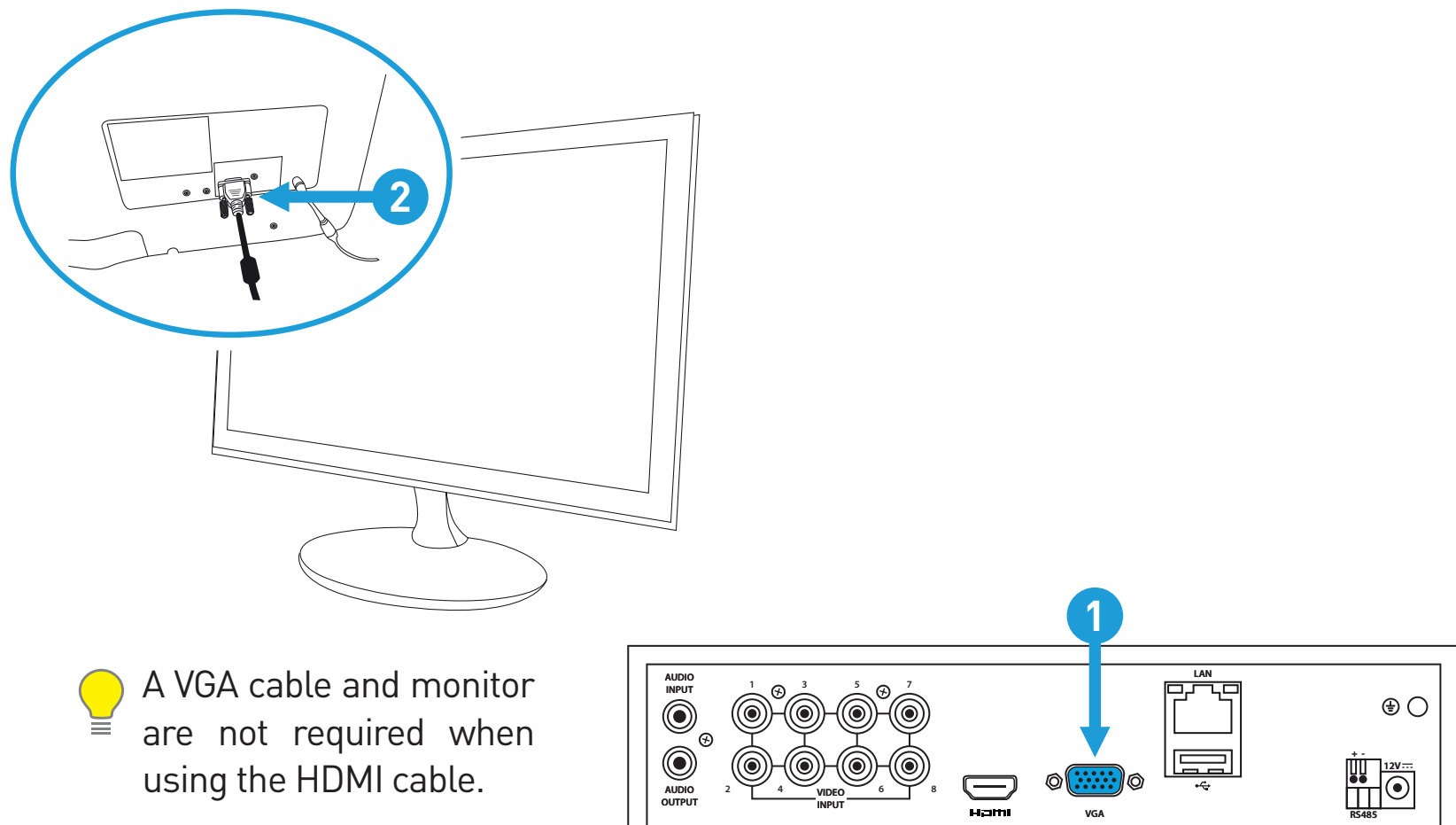
Connect the supplied Ethernet cable to the Ethernet port (1) on your DVR then connect the other end to a spare port (2) on your router. Don't proceed to the next step until this is done.



Please note: It's important that you do this as this allows your DVR to send email alerts, synchronise its internal clock and for remote access using the HomeSafe View Ethernet Cable app.

Step Five: Connect to your Monitor

If you have a monitor with a VGA connection, connect a VGA cable (not supplied) to the VGA port (1) on your DVR then connect the other end to the VGA input (2) on your monitor.



A VGA cable and monitor are not required when using the HDMI cable.

What does this mean?

- 1. **Audio Input:** For connecting a microphone (the microphone must have its own power source).
- 2. **Audio Output:** For connecting to a stereo or amplifier. This is not required when using the HDMI port.
- 3. **Camera Inputs:** Connect your cameras here. Twist the video connection to lock it in place.
- 4. **HDMI Port:** Connect this to your TV with a HDMI input (HDMI cable supplied).
- 5. **VGA Port:** Connect this to your monitor with a VGA input (VGA cable not supplied). This is not required when using the HDMI port.
- 6. **Ethernet Port:** Connect this to your router so your DVR can connect to the internet.
- 7. **USB Port:** Connect the mouse here.
- 8. **PTZ Port:** For connecting RS-485 compatible devices.
- 9. **Power Port:** Connect the 12V power adapter here.
- 10. **Power LED:** Indicates your DVR has power.
- 11. **Hard Drive LED:** Flashes when the hard drive is active.
- 12. **USB Ports:** Connect a USB flash drive to copy recorded events and to perform a firmware upgrade.

As your DVR is designed to be always on, there is no power button. To turn off your DVR, use the shutdown function then disconnect the power adapter.

FCC Warning Statement:

This device complies with part 15 of the FCC Rules. Operation is subject to the following two conditions: (1) This device may not cause harmful interference and (2) this device must accept any interference received, including interference that may cause undesired operation.

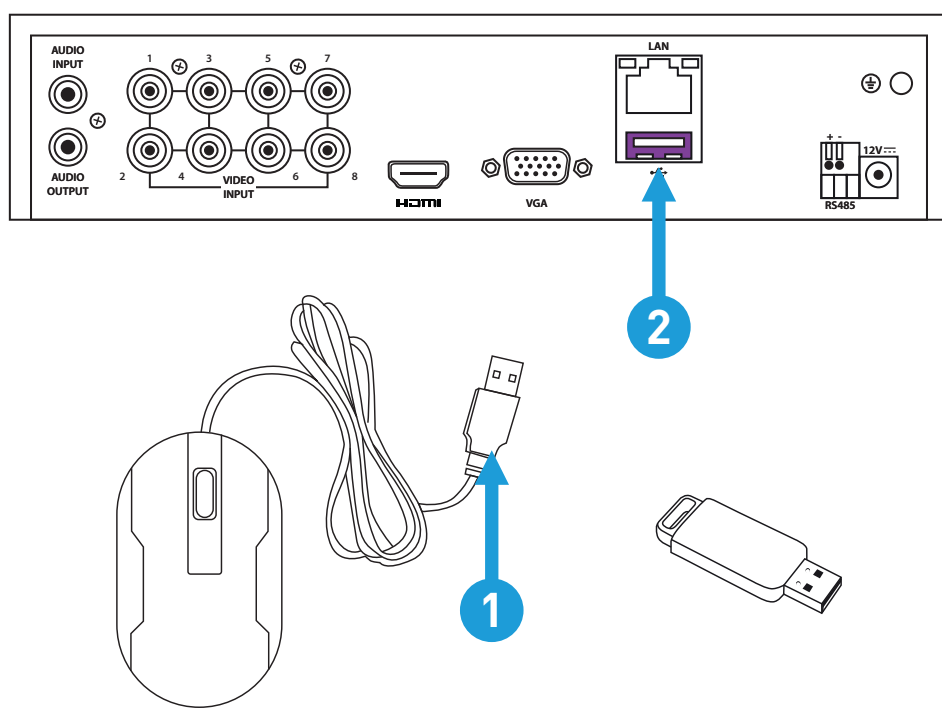
Battery Safety Information:

This product contains a coin/button cell battery. If the cell battery is swallowed, it can cause severe internal burns and can lead to death. Keep away from babies and small children at all times.

- If the battery is swallowed, immediately seek medical help
- Risk of explosion if battery is replaced by an incorrect type
- Dispose of used battery properly

Step Three: Connect your Mouse

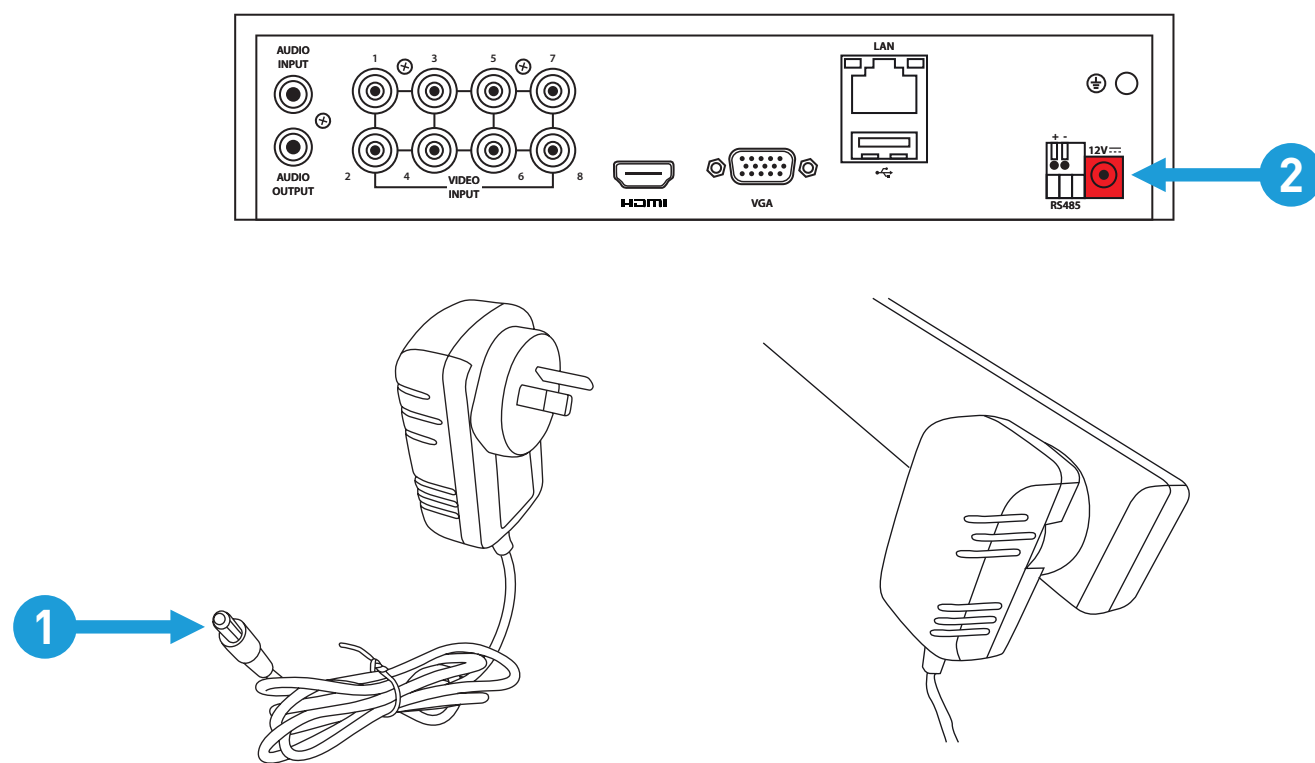
Connect the supplied mouse (1) to the USB port (2) located at the rear. To copy recorded events and to perform a firmware upgrade, connect a storage device such as a USB flash drive (not included) to the front ports.



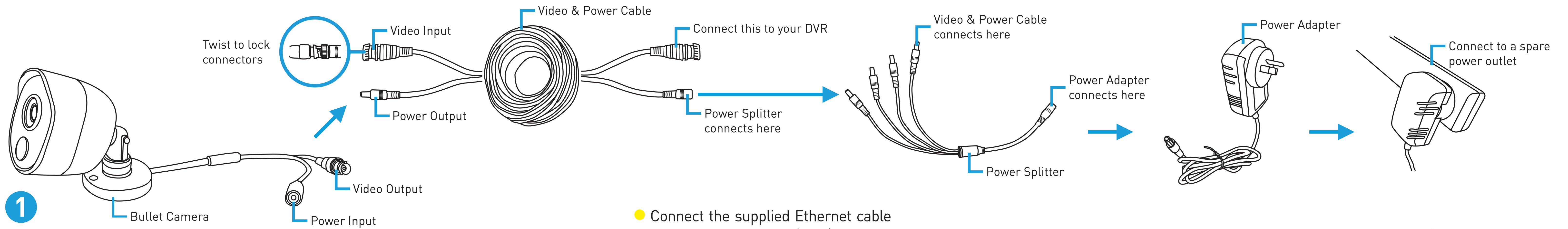
Please note: Bluetooth and wireless mice and trackpad devices are not supported. Not all USB storage devices are supported.

Step Six: Connect your Power Adapter

Connect the supplied power adapter's power connection (1) to the power input (2) on your DVR first (this will minimise sparking). Connect the power adapter to a power outlet then press the outlet's switch to the on position to supply power.

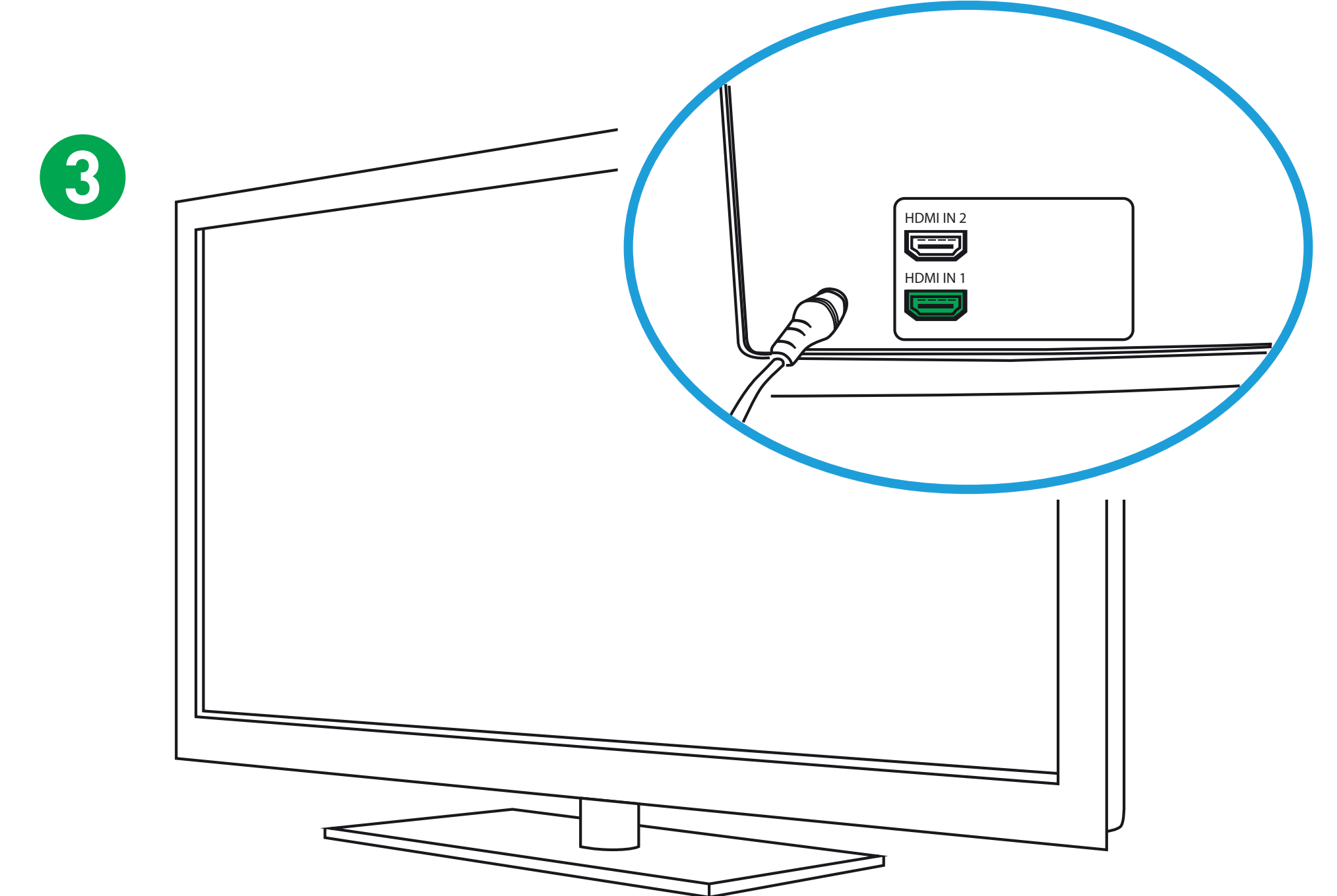
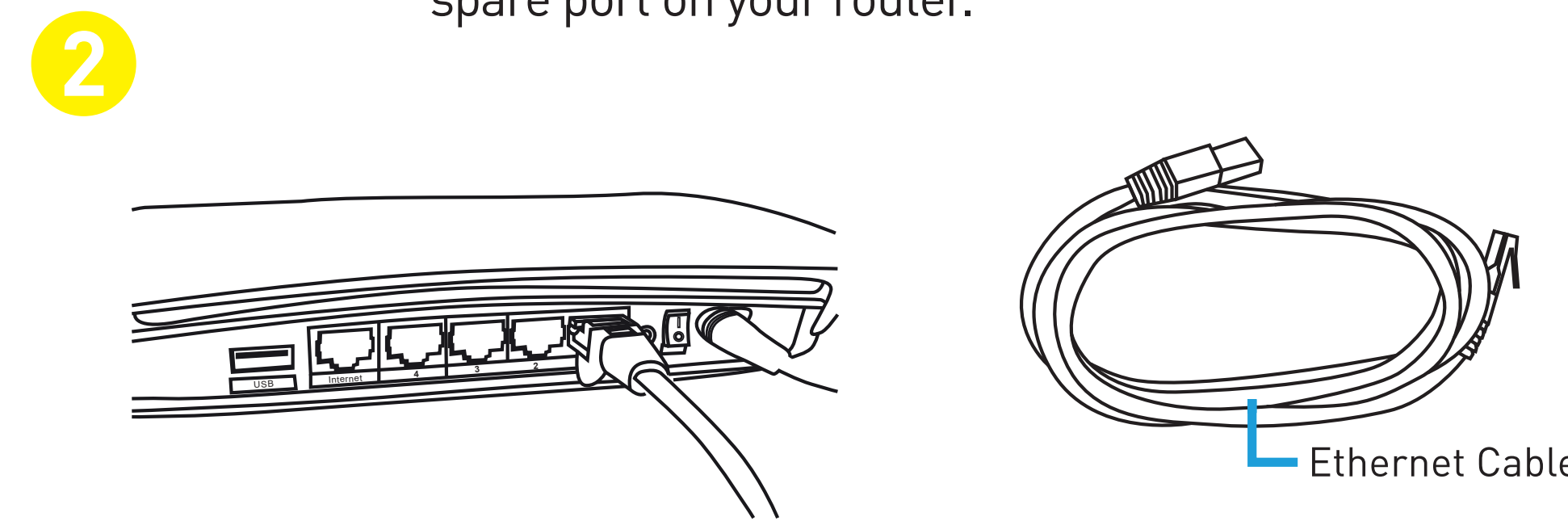


All connections have now been completed. You should see your DVR on the TV with the Setup Wizard displayed on-screen. Follow the "Startup Wizard Quick Start Guide" (the red coloured guide) to configure your DVR.



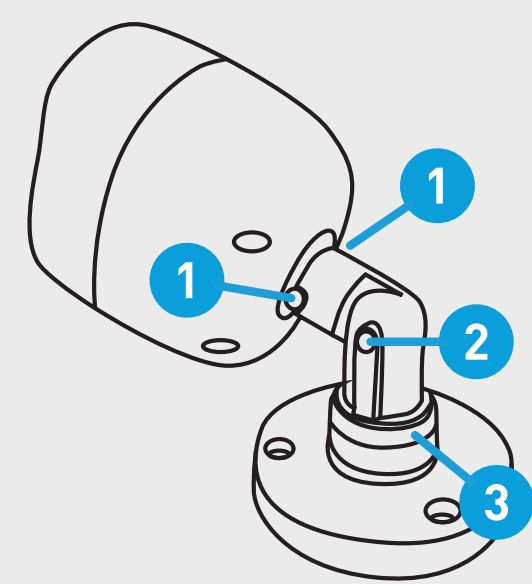
- Connect the video output on the video & power cable to each camera input (VIDEO INPUT) on your DVR. Twist the connection to lock it in place.

- Connect the supplied Ethernet cable to the Ethernet port (LAN) on your DVR then connect the other end to a spare port on your router.



- Connect the supplied HDMI cable to the HDMI port on your DVR then connect the other end to a spare HDMI input on your TV.

Press the A/V button on your TV's remote to select the HDMI input your DVR is connected to.



The bullet camera has three points of articulation. Use a Phillips head screwdriver to loosen the screw then adjust to the desired position. Tighten the screw again to secure in place.

Positioning the bullet camera

To avoid damage, don't position the camera without loosening the screws first.

- 1 This enables you to rotate the camera left or right.

- 2 This enables you to position the camera up or down.

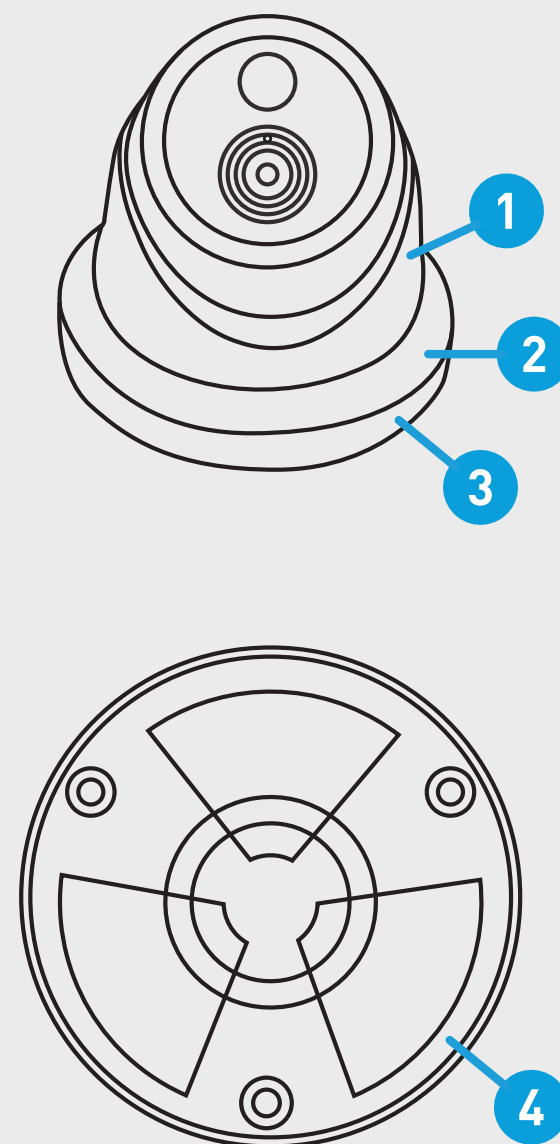
- 3 Loosen the locking screw counter clockwise to rotate the camera stand left or right. Tighten to secure in place.

Mounting and aiming the dome camera

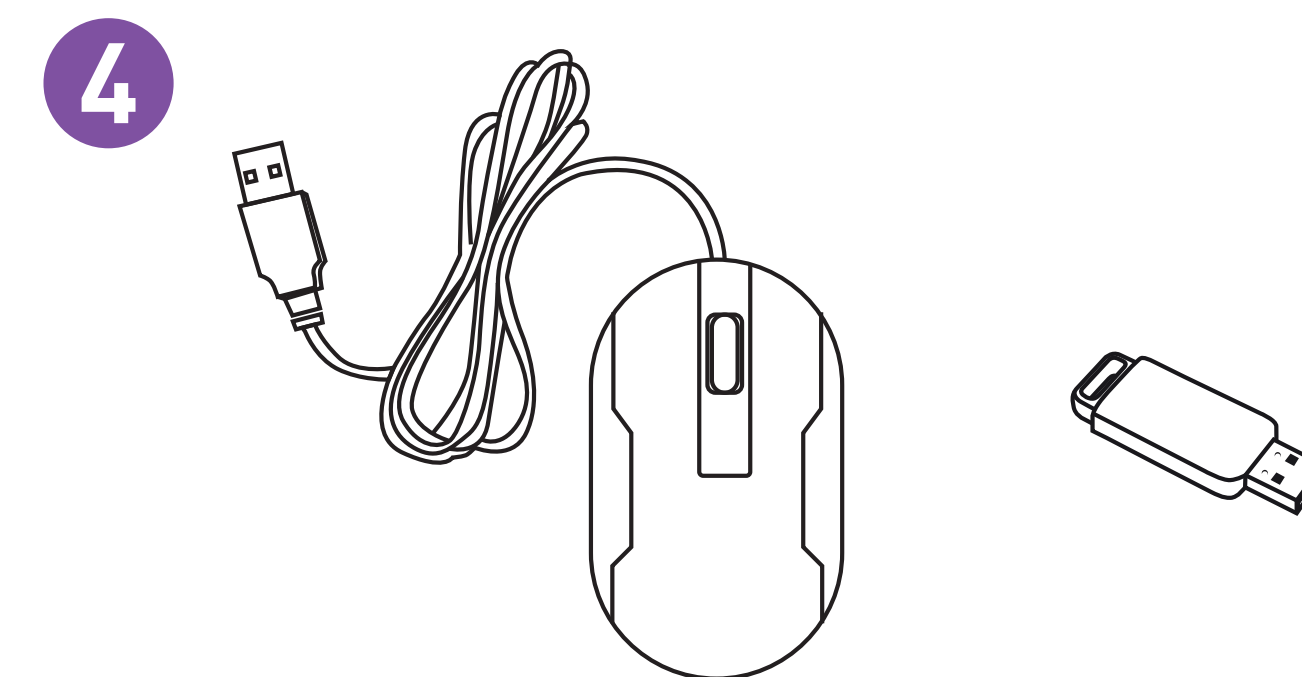
- 1. Hold the dome enclosure (1) and the dome ring (2) then rotate the mounting bracket (3) clockwise to remove it from the camera.

- 2. Run the cable as required and using the appropriate screws for the surface you are mounting to, screw the bracket (4) to fasten.

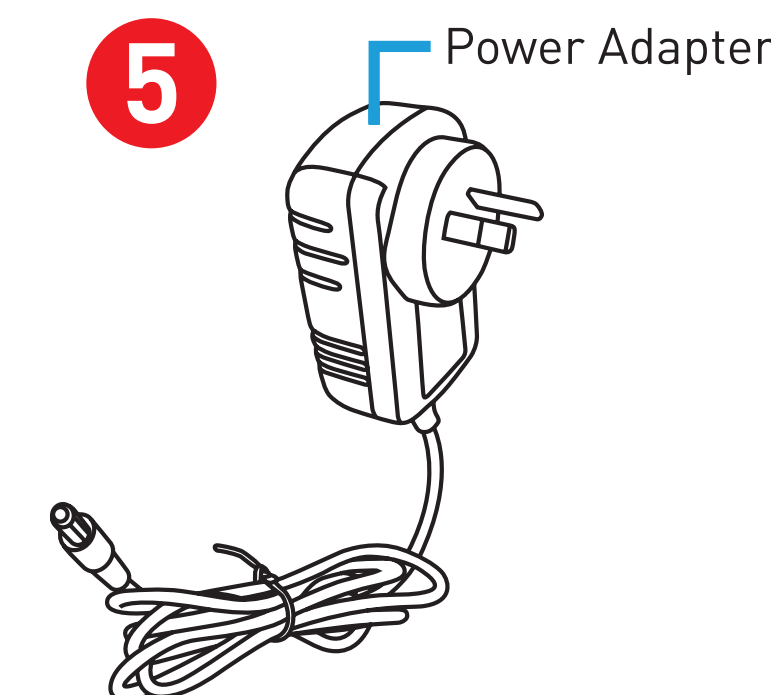
- 3. Place the camera into the dome enclosure and dome ring and aim the camera to the desired position. After you've finished adjusting the viewing position, rotate the dome ring to the mounting bracket counter clockwise to lock the position in place.



- Connect the supplied mouse to the USB port.



- To copy recorded events and to perform a firmware upgrade, connect a storage device such as a USB flash drive (not included) to the front ports.



- Connect the supplied power adapter's power connection to the power input (12V) on your DVR first (this will minimise sparking). Connect the power adapter to a spare power outlet.

Your DVR is designed to ventilate air to keep it at an optimal temperature. Keep both sides of your DVR free from obstructions to allow it to ventilate.

What are the additional connections for?

Audio Input: For connecting a microphone (the microphone must have its own power source).

Audio Output: For connecting to a stereo or amplifier. This is not required when using the HDMI port.

PTZ Port: For connecting RS-485 compatible devices.

VGA Port: Connect this to your monitor with a VGA input (VGA cable not supplied). This is not required when using the HDMI port.