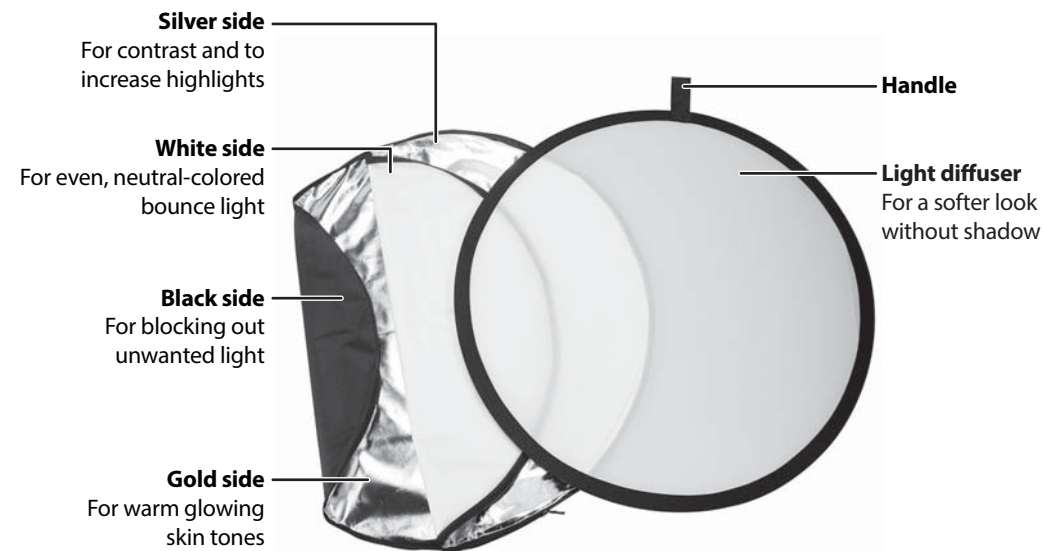


PLATINUM™

PACKAGE CONTENTS

- Collapsible light reflector
- Removable 2-sided slip-cover
- Carrying pouch
- *Quick Setup Guide*

FEATURES



USING YOUR LIGHT REFLECTOR

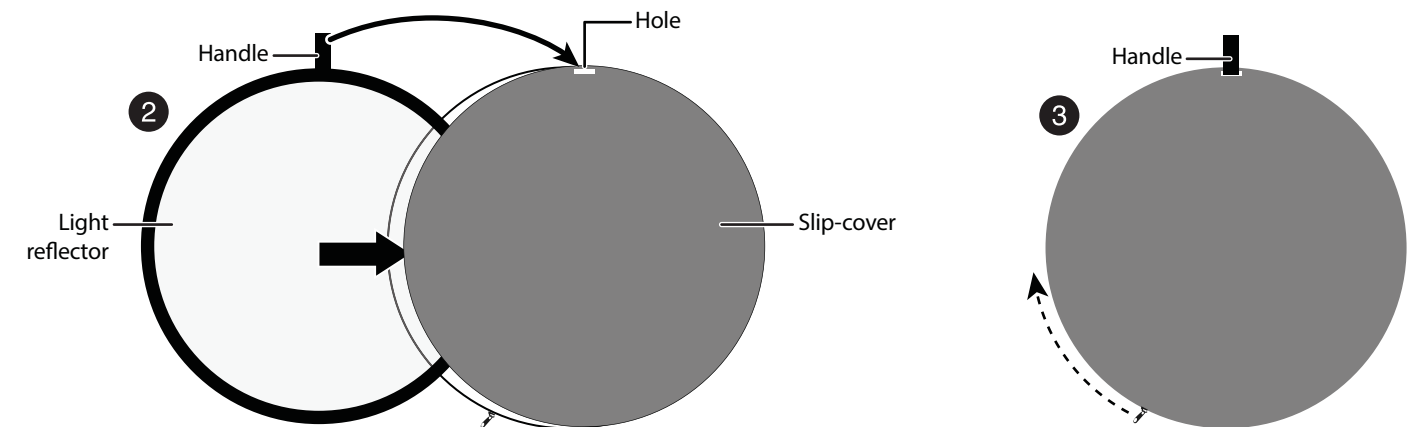
CAUTION: The light reflector opens quickly when twisting open, so hold it away from your face.

- 1 Remove the collapsed light reflector from the carrying pouch.
- 2 Twist open your light reflector.
- 3 Hold the light reflector by the edges, away from your subject, to achieve the results you want.

ATTACHING THE 2-SIDED SLIP-COVER

Note: You can use the light reflector alone or with the 2-sided slip-cover.

- 1 Unfold the 2-sided slip-cover. Turn the cover inside out to choose between the different colored surfaces.
- 2 Place the light reflector into the slip-cover, taking the handle through the hole in the slip-cover.
- 3 Hold the handle in place while you zip up the slip-cover.



PT-CLR4221

5-IN-1 42" COLLAPSIBLE LIGHT REFLECTOR

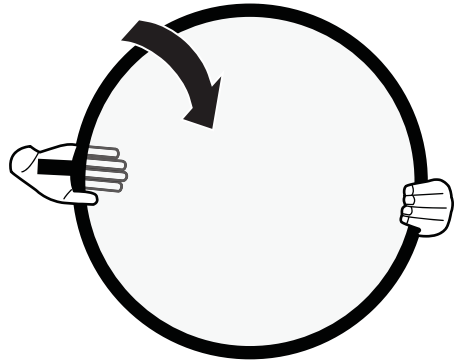
QUICK SETUP GUIDE

Before using your new product, please read these instructions to prevent any damage.

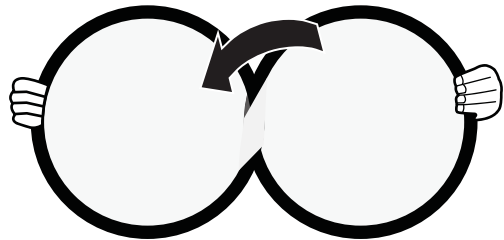
STORING YOUR LIGHT REFLECTOR

Tip: To maximize product life, remove the slip cover before folding and returning to the carrying pouch.

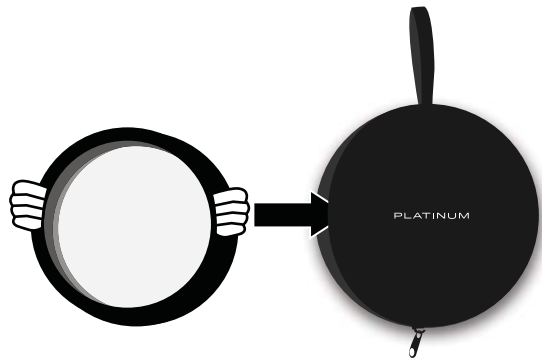
1 Hold the reflector on opposite sides with one hand facing up, and the other hand facing down.



2 Twist the reflector so that it forms a figure-eight.



3 Continue twisting until the two sides pass in front of one another and they are stacked, then insert the reflector into the carrying pouch. Keep the pouch zipped when the reflector is inside.



ONE-YEAR LIMITED WARRANTY

CONTACT PLATINUM

For customer service, call 1-800-499-3964.

PLATINUM is a trademark of Best Buy and its affiliated companies
Distributed by Best Buy Purchasing, LLC
7601 Penn Ave South, Richfield, MN 55423 U.S.A.
©2020 Best Buy. All rights reserved.