

Universal Remote Attachment for
NVIDIA® SHIELD™
1st-2nd Generation Gen NVIDIA SHIELD Remote

What's Included

- Sideclick Universal Learning Remote
- 2 AAA Batteries
- 2 NVIDIA SHIELD Adapter Clips*

*NVIDIA SHIELD remote not included

Tips

Please visit our website, www.sideclickremotes.com for additional information including:

- Assembly videos
- Programming videos
- Troubleshooting
- Additional Sideclick products and accessories
- Registering your device

All Rights Reserved.
Sideclick Remotes™ operates under True Bloom LLC and is not affiliated with NVIDIA Corporation.

NVIDIA and SHIELD are trademarks of NVIDIA Corporation, registered in the United States and other countries



Simple Setup

- 1 Insert the included 2 AAA Batteries into your Sideclick Remote.
- 2 Snap your NVIDIA SHIELD remote into the Adapter Clip.
- 3 Program Sideclick and you're ready to go.
(Detailed instructions on reverse)



Easy to Use



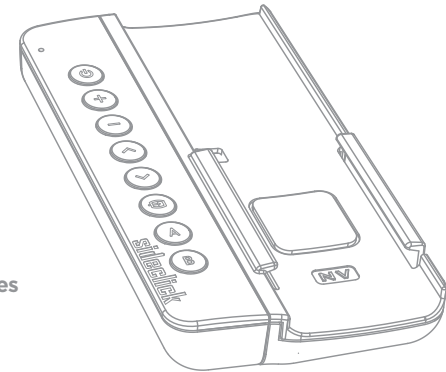
Fast Setup



Long Battery Life



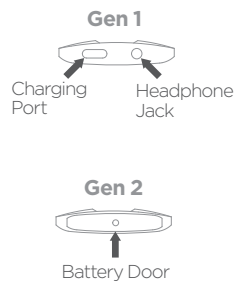
Control Multiple Devices



Getting Started

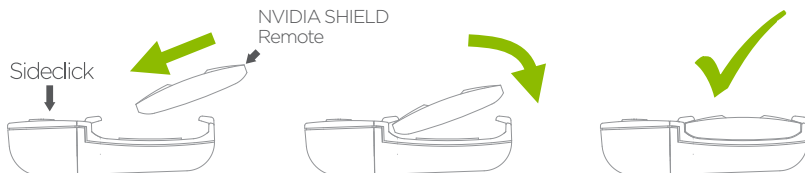
01 Identify Your Shield Remote

- 1 Look at the bottom of your NVIDIA SHIELD remote and use the image to the right to identify which generation remote you own.
- 2 Your Sideclick is packaged with the gen 2 adapter clip (NX) installed.
- 3 If you own the Gen 1 remote, jump to section 4 and 5 to remove the NX adapter clip and attach the gen 1 (NV) clip. Once you have completed section 5 proceed to section 2.



02 Install Your Remote

- 1 Install your NVIDIA SHIELD remote into the clip by sliding the left side of the remote under the left tab of the clip and then firmly pressing down on the right hand side of the remote until it snaps into place.

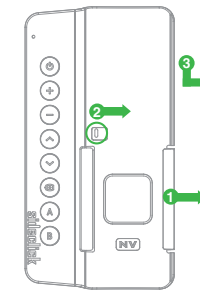


03 Program Your Sideclick

- 1 On Sideclick, hold down the **(P)** + **(B)** buttons simultaneously until the LED lights solid.
- 2 Position your Sideclick remote and the device remote you are learning from on a table, head to head, approximately 1 inch apart.
- 3 Press and release the Sideclick button you wish to program. The LED will start blinking.
- 4 Press and hold the button you want it to learn from on your device remote.
-The LED will blink 3 times indicating a successful learn, then will return to solid indicating you are ready to program other buttons.
-If the LED does not return to solid, a problem in programming has occurred. Exit programming mode via step 6 and try again.
- 5 While LED is on solid, repeat steps 3 & 4 for each button you would like to program.
- 6 To exit programming mode, press the **(P)** + **(B)** simultaneously and the LED will turn off. You can also wait approximately 10 seconds and it will exit programming mode automatically.
- 7 Your Sideclick is now ready to use.

04 Removing Your Remote and Clip

Sideclick features an interchangeable clip system. If you ever change streaming devices, you can go to www.sideclickremotes.com and purchase a new adapter clip to accommodate your new streaming device remote. This section explains how to remove and re-attach the NVIDIA SHIELD adapter clip.



- 1 If installed, remove your NVIDIA SHIELD remote by pushing the right side tab towards the right. Once the tab clears the edge of the remote, pull the right hand side of the remote toward you to free it from under the tab.
- 2 Using your finger tip, slide the release tab to the right as indicated in picture
- 3 While maintaining pressure on the tab, slide clip down and then away from remote.

05 Attaching Your Adapter Clip

- 4 To attach the new clip, line up tabs on Sideclick remote with keyholes on the side of the clip.
- 5 Press clip against Sideclick remote and slide clip up until it locks in place.

