

2017



Kent Rathbun
Restaurateur & Iron Chef Winner

LYNX PROFESSIONAL BROCHURE

PROFESSIONAL PERFORMANCE

Professional chefs take pride in the sense of style a kitchen conveys. They also appreciate the innovative and thoughtful conveniences that help make cooking a pleasure. Lynx Professional Grills distinguish your home's outdoor kitchen with their luxurious appearance and superior construction while their advanced, user-friendly features simplify the preparation of memorable meals.

Building on a heritage of equipping high-end commercial kitchens, Lynx Professional Grills have seamless, welded exteriors that are easier to keep clean. The Lynx Hood Assist technology makes lifting and lowering the hood effortless and safe. Additionally, you'll find conveniences such as halogen lighting that covers the entire grilling surface and control knobs brilliantly lit by blue LEDs—ensuring that your investment in outdoor entertaining will prove rewarding for years to come.



ENGINEERED FOR OUTDOORS

Serious outdoor chefs expect more from a high-performance grill than just impressive heat output. The ability to control heat so you can cook with finesse matters too. So do the many other details that help achieve great results. Lynx Professional Grills are built to live up to the most demanding expectations.

You'll find cast-brass burners with a lifetime warranty whose designs are based on commercial requirements. Ceramic radiant briquettes that evenly distribute heat and ProSear2 infrared technology with unique instantaneous temperature adjustment raises from simmer to sear with its 23,000 BTU per burner. Corrosion-resistant, 16-gauge 304 stainless steel alloys withstand long-term exposure to the elements. Whenever you're ready to grill outdoors, a Lynx Professional Grill is ready for you.





Chef Kent Rathbun is a celebrated culinary figure and a true master of the grill.

The outdoors is our home. It's also our speciality—we're experts at it.

And while the world's greatest grill will always be our flagship, we've applied the Lynx philosophy and outstanding workmanship to the whole collection of outdoor products and accessories—from refrigerators to warming drawers.

Lynx's complete line of outdoor kitchen products combines advanced proprietary technologies and refined features that you can use to design your own outdoor cooking center.

Lynx is committed to providing the best customer experience and product service possible. We have a dedicated team of highly trained professionals to answer your needs Monday–Friday during regular business hours.

For technical questions or service please e-mail: service@lynxgrills.com or call: 888.289.5969

PROFESSIONAL PERFORMANCE	2
ENGINEERED FOR OUTDOORS	3
DESIGN SERVICES	5
QUALITY YOU CAN FEEL	6
SEAMLESS, WELDED CONSTRUCTION	7
LYNX SMART SERIES	10, 11, 12, 13, 14, 15, 16, 17
FEATURES AND BENEFITS	18
TECHNOLOGY AND QUALITY HIGHLIGHTS	19, 20, 21, 22
LYNX ALL TRIDENT GRILLS	23
54" PROFESSIONAL GRILL - BUILT-IN	24
42" PROFESSIONAL GRILL - BUILT-IN	25
36" PROFESSIONAL GRILL - BUILT-IN	26
30" PROFESSIONAL GRILL - BUILT-IN	27
27" PROFESSIONAL GRILL - BUILT-IN	28
PROFESSIONAL GRILLS: FREESTANDING	29, 30
MOBILE KITCHEN BY LYNX	31
ASADO BY LYNX	32, 33
NAPOLI OUTDOOR OVEN BY LYNX	34, 35
LEISURE MEETS LUXURY	36
PROFESSIONAL SIDE BURNERS / POWER BURNER	37
REFRIGERATORS/BEVERAGE DISPENSER/TOWER HEADS	38, 39
WINE CELLAR/REFRIGERATOR/OUTDOOR ICE MACHINE	40, 41
WARMING DRAWERS	42, 43
SINKS/FAUCETS/COCKTAIL PRO STATION	44, 45
VENTANA STORAGE COLLECTION	46
TRASH CENTERS AND CHUTE	47
STORAGE SYSTEM / ACCESS DOORS	48
SEALED PANTRY / UTILITY DRAWERS	49
INFRARED PATIO HEATERS	50
ACCESSORIES / VENT HOODS	51
COOKING ACCESSORIES	52
GRILL AND ACCESSORY COVERS	53
SPECIFICATIONS AND INSTALLATION	54, 55, 56, 57
LYNX PROFESSIONAL GRILLS LIMITED WARRANTY	58
CONNECT WITH US ONLINE	59

— A GREAT —
**DESIGN
CHANGES
EVERYTHING**



GET STARTED TODAY
With your complimentary design

Visit the Lynx Design Center
www.lynxgrills.com/designservice
designservice@lynxgrills.com





Touch and mechanical perfection are important to us at Lynx.

Run your fingers over one of our grills. Feel the flawless metal. Feel the seamless, polished welds. Note the lack of screws and the absence of sharp edges.

Now lift the grill hood. You can do it with a single finger. It weighs nearly 40 pounds, but thanks to the Lynx Hood Assist that employs perfectly positioned springs to achieve a seesaw-like balance, the hood opens and closes with a feather touch.

SEAMLESS, WELDED CONSTRUCTION
FOR STRENGTH AND BEAUTY



Instead of using mechanical fasteners, our craftsmen construct Lynx products with continuously welded joints, forming precision pieces into a solitary, integrated body of gorgeous steel, free of gaps and seams where moisture and grease can collect.

This makes cleaning a lot easier, enhances durability and helps create Lynx's stop-you-in-your-tracks good looks for an unmistakable, tangible feel of absolute premium quality.

LYNX CREATES BEAUTIFUL OUTDOOR KITCHENS AROUND THE WORLD



Shown: Napoli Outdoor Oven, Warming Drawer, 36" Grill, Prep Center, Storage, Refrigerator, Cocktail Pro, and Ice Maker

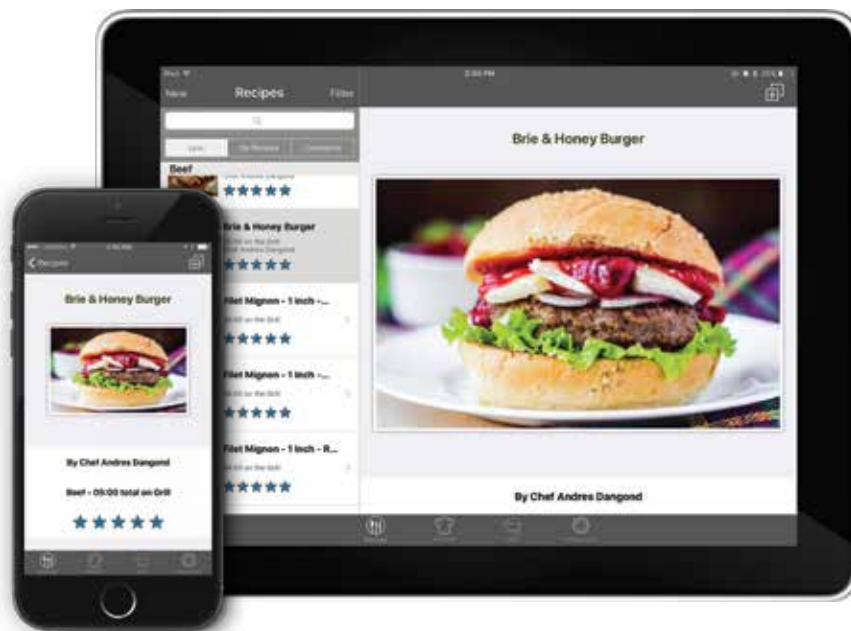




LYNX SMART SERIES

How do you get even more delicious results from the outdoor products that already set the standard for quality and technology? You endow them with the ability to offer the benefits of expert cooking guidance.

SmartGrill and Sonoma Smoker by Lynx communicate with an app on your smartphone or tablet, and for SmartGrill, via voice commands. Choose from three ways to cook: Call up hundreds of recipes from the constantly updated Smart Recipes database; set cooking time and temperature to your own preferences; or cook completely manually.



Comparing data from temperature sensors with the cooking techniques included in each recipe, Lynx Smart technology continuously adjusts the electromechanical valves in the grill or smoker with pinpoint precision. The app even learns from experience, so you can adjust its standards of doneness to match your own.

With the Lynx Smart Series, it's like having an expert chef as your assistant, whenever you're ready to cook.









LYNX SMART SERIES

AND WITH LYNX, THIS IS WHAT IT LOOKS LIKE

AUTOMATED COOKING

MyChef™ operating system monitors cooking times and temperatures

Learning algorithm allows Lynx Smart Series products to dial in your preferred doneness

SMARTPHONE CONTROL

Monitor your food from anywhere through Lynx Smart Series apps

Receive a notification when your attention is required

Connects to your home's WiFi network

CONNECT WITH THE LYNX SMART COMMUNITY

Upload your own recipes to the Smart Recipes database

Save your favorites to your profile

UNPARALLELED SAFETY FEATURES

Temperature sensors measure cooking temperatures so you have complete control over the action

Receive alerts when your grill or smoker are being used

Lynx Smart Series products automatically shut down if left inactive longer than 30 minutes



Sonoma Smoker by Lynx



SmartGrill by Lynx





ENHANCE YOUR COOKING TALENT

With the SmartGrill by Lynx briquette trays are gone! The ProSear2 grills are true high-performance machines with the best heat profile of any Lynx grill—and the SmartGrill app lets you make the most of them.

All Trident ProSear2 infrared burners provide the fastest-ever preheat, along with extremely responsive temperature control for searing precision impossible with other grills. Both three-burner all-Trident grills (42" and 36") offer three distinct temperature zones; the 30" SmartGrill offers two zones.



SMARTGRILL BY LYNX

INCLUDES ALL OF THESE FEATURES

Three variable temperature Trident ProSear2 infrared burners (two burners on 30" model)

Backlit blue LED control knobs and dual halogen grill surface lights

Lynx Hood Assist absorbs 95% of the front hood weight

Stainless steel grilling grates with limited lifetime warranty

Dual-position internally powered rotisserie with heavy-duty, 3-speed motor and rear infrared burner with 16,000 BTU

Freestanding models feature cart with folding side shelves

Carbon fiber vinyl cover included with all models

Voice activated, smart device controlled or manual

iOS and Android operating systems supported

Temperature sensors measure heat output at cooking surface

Electromechanical valves automatically maintain preset surface temperature

Cart mounted double side burner available Model LCB2-3

Electronics nest in a weatherproof case under the grill

Powered by a 1.5Ghz Intel® Processor, 64GB of storage, and 802.11g WiFi

Includes all the features of our standard 42", 36", and 30" grills

NOTE: Must specify gas type—NG for Natural Gas or LP for Propane

NOTE: For planning and installation details, including dimensions, specification sheets, and CAD drawings please visit the Support/Product Documents section of the Lynx website: lynxgrills.com



42" SMARTGRILL

1200 sq. in. cooking surface (855 Primary/345 Secondary)

SMART42 42" Built-in SmartGrill (shown)

SMART42F 42" Freestanding Cart SmartGrill



36" SMARTGRILL

935 sq. in. cooking surface (640 Primary/295 Secondary)

SMART36 36" Built-in SmartGrill (shown)

SMART36F 36" Freestanding Cart SmartGrill



30" SMARTGRILL

840 sq. in. cooking surface (600 Primary/240 Secondary)

SMART30 30" Built in SmartGrill (shown)

SMART30F 30" Freestanding Cart SmartGrill



LOADED WITH SLOW-COOKING EXPERTISE

Lower temperatures over a longer cooking time enable a smoker to create moist, tender results with a delicious smoky accent. Lynx Smart Sonoma Smokers make it easier than ever to achieve these distinctive results. They can smoke for up six hours on one load of fuel. And their Lynx Smart technology maintains the optimum temperature throughout the cooking process—while also keeping you informed on the progress of your culinary efforts via your WiFi-enabled app.



SONOMA SMOKER BY LYNX

INCLUDES ALL OF THESE FEATURES

NEW

1000 sq. in. cooking surface

Dual racks for food placement

Temperature range 160°–350° F

Smoke up to 6 hours without reloading woodchip fuel

WiFi and app enabled allows you to check status of your food

LCD control panel with real time information

NOTE: Must specify gas type—NG for Natural Gas or LP for Propane

NOTE: For planning and installation details, including dimensions, specification sheets, and CAD drawings please visit the Support/Product Documents section of the Lynx website: lynxgrills.com

CHECK OUT OUR WOOD CHIPS



30" BUILT-IN OR COUNTERTOP

LSMK (shown)



30" FREESTANDING SMOKER

LSMKF (shown)



30" SMOKER ON MOBILE CART

LSMKM (shown)

The innovative features, unparalleled performance, and superior craftsmanship of Lynx Professional Grills are available in 27", 30", 36", 42" and 54" configurations for built-in or freestanding applications.



GENERAL FEATURES

- Trident ProSear2 infrared technology delivers intense & controllable infrared heat
- Cast brass burner for extremely even cooking
- Elegant fit & finish, continuously welded smooth joints
- Reliable hot surface ignition system
- Control knob illumination w/ blue LED lights
- Internal halogen grill surface light(s)
- Specially designed high-density ceramic radiant briquettes
- Large & easy-to-read temperature gauge
- Fluid rotation handle is easy on wrist
- Lynx Hood Assist for effortless, safe operation
- Heat stabilizing design
- Dual position internally powered rotisserie w/ rear infrared burner & heavy-duty 3-speed motor
- Removable large-capacity smoker box
- Solid stainless steel grilling grates



FREESTANDING GRILL CART FEATURES

- Grill head is welded to cart to ensure strength & rigidity
- Commercial casters w/ 360° maneuverability make these units easy to move; 6 casters on 42" & 54" grills
- Fold-down shelves
- Heavy-duty swing-out cart doors
- Doors include removable condiment shelves for easy cleaning
- 42" & 54" grill carts feature two pull out utility storage drawers
- Optional sliding LP tank tray (LSTLP) available for 30", 42" & 54" grills
- Optional side burner attachment available (LCB2-3)

MEET DONATELLA ARPAIA NEW YORK, NY IRON CHEF JUDGE AND RESTAURATEUR

"My Lynx outdoor kitchen is beautiful, powerful and uses the latest technology. The grill cooks more evenly than any other grill and the made in America craftsmanship made it the only choice for me. There isn't anything I can't cook outside that I can inside. Our outdoor kitchen has become the heart of our home."





CAST BRASS BURNERS

- Lifetime Warranty
- Commercial burner design
- Rated at 25,000 BTUs each
- Heavy cast brass burners radiate heat effectively



PROSEAR2 TRIDENT BURNER

- Lifetime Warranty
- Patented Trident ProSear2 Technology
- Wide temperature range of 300°–1000°
- Instantaneous response
- Reduces flare-ups by two thirds



CONTROL KNOB ILLUMINATION WITH BLUE LED LIGHTS

- Each knob features dedicated LED lighting
- Knob markings can easily be viewed at night
- Single switch activation for blue LEDs and internal halogen lights

MEET KENT RATHBUN DALLAS, TX RESTAURATEUR AND IRON CHEF WINNER

"As a chef, I have been fortunate enough to work with many brands of equipment—but when it comes to outdoor appliances, I find Lynx to be the Porsche of outdoor kitchen products."





INTERNAL HALOGEN GRILL SURFACE LIGHT

- Brightly illuminates the entire grilling surface using a heavy-duty Pyrex® glass lens directly over the grilling surface
- 10 watt halogen light
- 36", 42" and 54" grills feature two lights



CERAMIC RADIANT BRIQUETTES

- Special designed high-density ceramic
- Even heat across the entire grilling surface
- Reduces flare-ups by keeping grease and oil away from the direct flame
- Enhances food flavors as drippings hit the briquettes and create smoke
- Briquettes are clipped in place for easy reversible cleaning



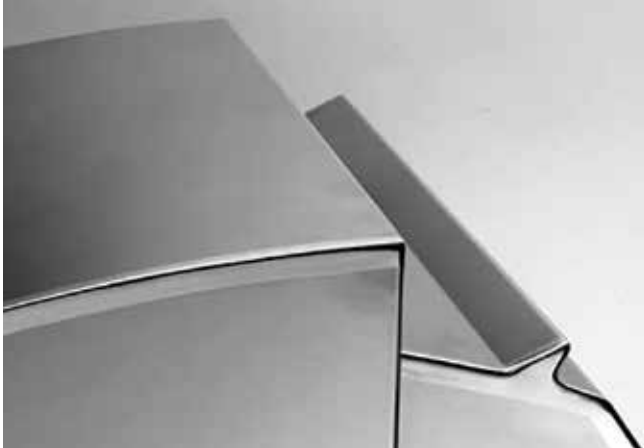
LYNX HOOD ASSIST

- Heat treated stainless steel spring system
- Makes opening the commercial-grade hood effortless and safe
- Easy to remove and replace
- Reduces 90% of hood weight



MEET MICHAEL SCHWARTZ MIAMI BEACH, FL CHEF/RESTAURATEUR

"I'm honored to be part of the Lynx Chef Panel and work with its innovative products. Grilling is one of the simplest ways to build flavor into a dish and has always played an important role in my approach to cooking."



HEAT STABILIZING DESIGN

- Wind-fin design (left) stabilizes critical grill surface temperatures when cooking in windy conditions with the grill hood closed
- Firebox baffles and burner partitions on ProSear2 models ensure that the heat generated by the burners is uniformly and directly delivered to the grill surface



REMOVABLE LARGE-CAPACITY SMOKER BOX INCLUDED

- Used with wood chips or smoker pellets
- Set directly on grates over any burner
- Smoking is most effective in first 20 minutes of slow cooking
- Made of heavy-gauge 304 stainless steel
- Unique handle and interlock mechanism is designed to allow quick removal or refilling



ROTISSERIE SYSTEM

- 3-speed motor rated for 55 lbs.
- 2 roasting positions
- 14,000 to 16,000 BTU infrared rear burner
- Stainless steel roller bearings
- Drip pan included

MEET
**ELIZABETH BLAU &
KIM CANTEENWALLA** LAS VEGAS, NV
CHEF/RESTAURATEUR

"We are very proud to be joining the Lynx Chef Panel. Our Lynx grill is a success. We truly feel there is no competitor that can hold a candle to Lynx in terms of outdoor grilling."





GRILLING SURFACE AREA

Lynx grills have an extended depth for more primary grilling space*

- 27" Grill - 685 sq. in. (470 primary / 215 secondary)
- 30" Grill - 840 sq. in. (600 primary / 240 secondary)
- 36" Grill - 935 sq. in. (640 primary / 295 secondary)
- 42" Grill - 1,200 sq. in. (855 primary / 345 secondary)
- 54" Grill - 1,555 sq. in. (1,110 primary / 445 secondary)

***NOTE:** 27" and 36" grill depth = 19" / 30", 42" and 54" grill depth = 21"



TEMPERATURE GAUGE

- Indicates when your grill is ready for cooking
- Large and easy to read
- Temperature reading is for convected heat, add 200° for surface grate temperature



RELIABLE HOT SURFACE IGNITION SYSTEM

- Ensures safe and efficient burner ignition
- Light each burner with the push of a knob
- Robust and weather resistant
- Ignition operates on 12 volts DC
- Integral "flash-tube" alternate lighting system



MEET KEVIN GARVIN DALLAS, TX EXECUTIVE CHEF, NEIMAN MARCUS RESTAURANTS

"I like to use my outdoor Lynx grill as often as I can and nothing is better than searing a nice New York steak at 500° to 600°. Once both sides are seared, I move the steak to a cooler part of the grill to finish cooking. It's that outside crispy char that I strive for all the time. Thanks for building the greatest grills in the world!"

Shown: All Trident Grill

LYNX ALL TRIDENT GRILLS – OUR BEST HEAT PROFILE EVER FROM SIMMER TO SEAR

PREHEATS FASTER - Traditional grills can take 30 minutes + to preheat, the All Trident Grill can preheat in less than 10 minutes.

INSTANTANEOUS TEMPERATURE CONTROL - Grill cooking too hot? Turn down the knob and get an immediate response from your All Trident Grill (ASR model).

COOKS EVENLY - Even temperature control on entire grilling surface.

REDUCE FLARE-UPS - by two thirds

WIDE TEMPERATURE RANGE
300°–1000° F



MEET ANDRÉS DANGOND DOWNEY, CA LYNX EXECUTIVE CHEF AND DIRECTOR OF CULINARY DEVELOPMENT

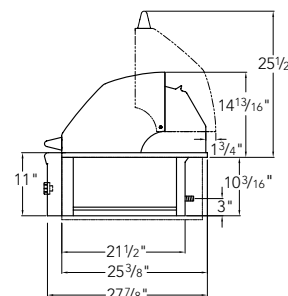
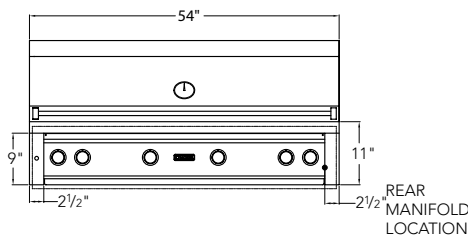
"The thing that blows my mind every time I turn on a Lynx Grill is how insanely hot it can get in a short amount of time. Realizing how fast it responds to heat adjustments when cooling it down for slow cooking after searing, or quickly heating up for reverse searing, made me realize we can almost forget everything we know about traditional grilling. These machines are perfect."



54" PROFESSIONAL GRILL



Built-In



54" PROFESSIONAL BUILT-IN GRILL

Model No. L54PSR-2

Three cast brass burners + one Trident ProSear2 burner
(total 98,000 BTUs)

1555 sq. in. cooking surface (1110 primary, 445 secondary)

Hot surface ignition system

Heat stabilizing design

Control illumination w/ blue LEDs

Dual halogen grill surface lights

Temperature gauge

Fluid rotation handle

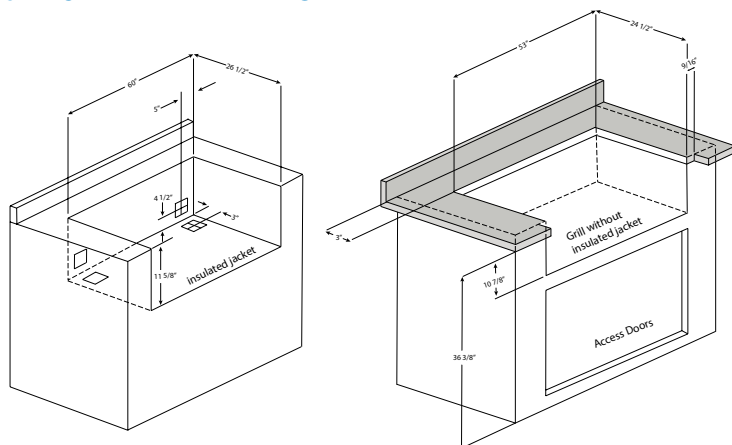
Lynx Hood Assist Kit

Removable large-capacity smoker box

Stainless steel grilling grates

Dual-position internally powered rotisserie w/ heavy-duty
3-speed motor & two rear infrared burners

54" ISLAND PREPARATION



4" square holes for gas and electrical connections both left and right sides(rear or bottom access). Make these holes in the frame based on your requirements. 120V GFI outlet must be located within 6' of the 4" hole.

If using a countertop with overhang a 9/16" notch is required.

COOKING SURFACE

- 1,555 sq. in. cooking surface
(1110 primary / 445 secondary)

SHIPPING WEIGHTS & DIMENSIONS

- Built-In Grill: 421 lbs. / 63 1/4" x 34" x 34"
- Free Standing Grill: 627 lbs. / 63 1/4" x 34" x 54 1/2"

COMPLEMENTARY PRODUCTS

- Side Burner (see page 37)
- Outdoor Refrigeration (see pages 38-41)
- Cocktail Station (see page 45)
- Access Doors and Storage Systems (see page 46-49)
- Patio Heater (see page 50)

MODEL	DESCRIPTION
L54PSR-2	54" Built-In Grill - 1 ProSear2 IR Burner w/ Rotisserie
LIJ54	Insulating Jacket for 54" Built-In-Grill
CC54	54" All Grill Carbon Fiber Vinyl Cover (Built-In)

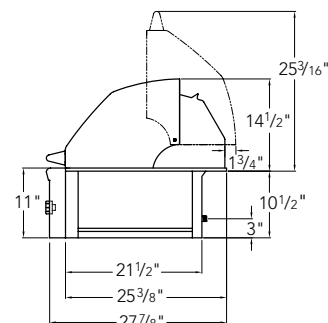
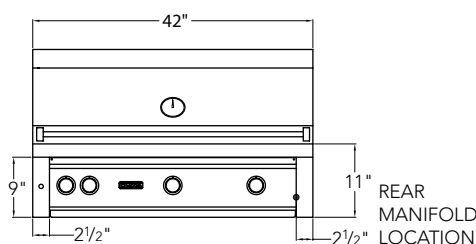
NOTE: Must specify gas type—NG for Natural Gas or LP for Propane

NOTE: For planning and installation details, including dimensions, specification sheets, and CAD drawings please visit the Support/Product Documents section of the Lynx website: lynxgrills.com

42" PROFESSIONAL GRILL



Built-In



42" PROFESSIONAL BUILT-IN GRILL

Model No. L42PSR-2

All Trident, ProSear2 and all briquette models available
(up to 75,000 BTUs)

1200 sq. in. cooking surface (855 primary, 345 secondary)

Hot surface ignition system

Heat stabilizing design

Control illumination w/ blue LEDs

Dual halogen grill surface lights

Temperature gauge

Fluid rotation handle

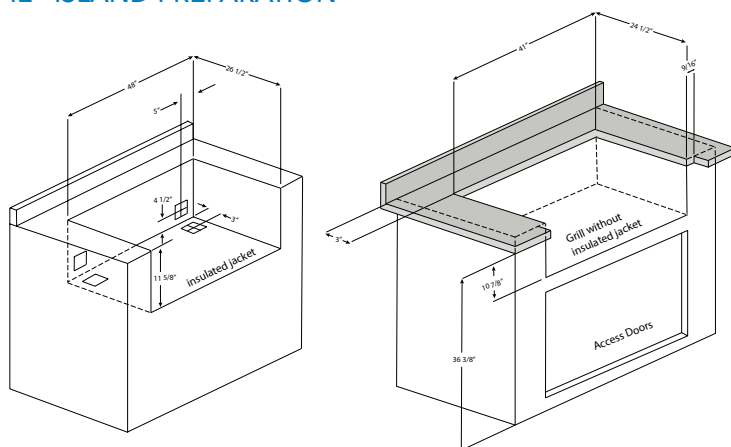
Lynx Hood Assist Kit

Removable large-capacity smoker box

Stainless steel grilling grates

Dual-position internally powered rotisserie w/ heavy-duty
3-speed motor & rear infrared burner

42" ISLAND PREPARATION



4" square holes for gas and electrical connections both left and right sides(rear or bottom access). Make these holes in the frame based on your requirements. 120V GFI outlet must be located within 6' of the 4" hole.

If using a countertop with overhang a 9/16" notch is required.

COOKING SURFACE

- 1200 sq. in. cooking surface
(855 primary / 345 secondary)

SHIPPING WEIGHTS & DIMENSIONS

- Built-in Grill: 346 lbs. / 51 1/2" x 34" x 34"
- Freestanding Grill: 524 lbs. / 51 1/2" x 34" x 54 1/2"

COMPLEMENTARY PRODUCTS

- Side Burner (see page 37)
- Outdoor Refrigeration (see pages 38-41)
- Cocktail Station (see page 45)
- Access Doors and Storage Systems (see page 46-49)
- Patio Heater (see page 50)

MODEL	DESCRIPTION
L42R-1	42" Built-In Grill w/ Rotisserie
L42PSR-2	42" Built-In Grill - 1 ProSear2 IR Burner w/ Rotisserie
L42ASR	42" Built-In Grill - All Trident IR Burner w/ Rotisserie
LIJ42	Insulating Jacket for 42" Built-In Grill
CC42	42" Carbon Fiber Vinyl Cover (Built-In)

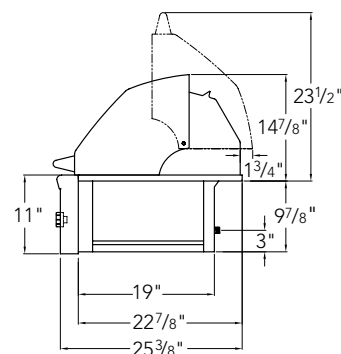
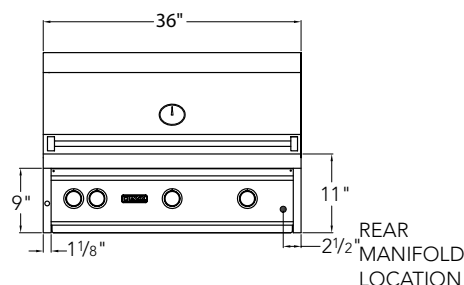
NOTE: Must specify gas type—NG for Natural Gas or LP for Propane

NOTE: For planning and installation details, including dimensions, specification sheets, and CAD drawings please visit the Support/Product Documents section of the Lynx website: lynxgrills.com

36" PROFESSIONAL GRILL



Built-In



36" PROFESSIONAL BUILT-IN GRILL

Model No. L36PSR-2

All Trident, ProSear2 and all briquette models available (up to 75,000 BTUs)

935 sq. in. cooking surface (640 primary, 295 secondary)

Hot surface ignition system

Heat stabilizing design

Control illumination w/ blue LEDs

Dual halogen grill surface lights

Temperature gauge

Fluid rotation handle

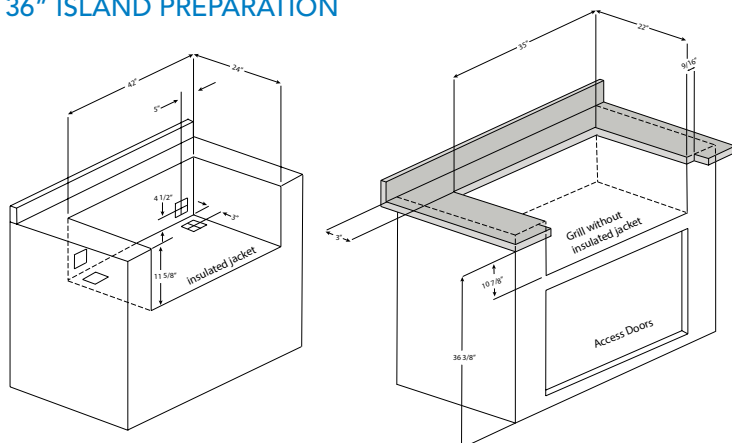
Lynx Hood Assist Kit

Removable large-capacity smoker box

Stainless steel grilling grates

Dual-position internally powered rotisserie w/ heavy-duty 3-speed motor & rear infrared burner

36" ISLAND PREPARATION



4" square holes for gas and electrical connections both left and right sides(rear or bottom access). Make these holes in the frame based on your requirements. 120V GFI outlet must be located within 6' of the 4" hole.

If using a countertop with overhang a 9/16" notch is required.

COOKING SURFACE

- 935 sq. in. cooking surface (640 primary / 295 secondary)

SHIPPING WEIGHTS & DIMENSIONS

- Built-In Grill: 291 lbs. / 46" x 31 1/2" x 33 3/4"
- Freestanding Grill: 414 lbs. / 46" x 31 1/2" x 54 1/2"

COMPLEMENTARY PRODUCTS

- Side Burner (see page 37)
- Outdoor Refrigeration (see pages 38-41)
- Cocktail Station (see page 45)
- Access Doors and Storage Systems (see page 46-49)
- Patio Heater (see page 50)

MODEL	DESCRIPTION
L36R-1	36" Built-In Grill w/ Rotisserie
L36PSR-2	36" Built-In Grill - 1 ProSear2 IR Burner w/ Rotisserie
L36ASR	36" Built-In Grill - All Trident IR Burner w/ Rotisserie
LJ36	Insulated Jacket for 36" Built-In-Grill
CC36	36" Carbon Fiber Vinyl Cover (Built-In)

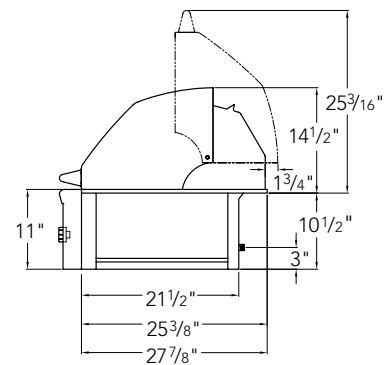
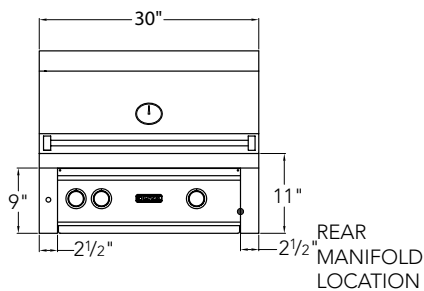
NOTE: Must specify gas type—NG for Natural Gas or LP for Propane

NOTE: For planning and installation details, including dimensions, specification sheets, and CAD drawings please visit the Support/Product Documents section of the Lynx website: lynxgrills.com

30" PROFESSIONAL GRILL



Built-In



30" PROFESSIONAL BUILT-IN GRILL

Model No. L30PSR-2

All Trident, ProSear2 and all briquette models available (up to 50,000 BTUs)

840 sq. in. cooking surface (600 primary, 240 secondary)

Hot surface ignition system

Heat stabilizing design

Control illumination w/ blue LEDs

Halogen grill surface light

Temperature gauge

Fluid rotation handle

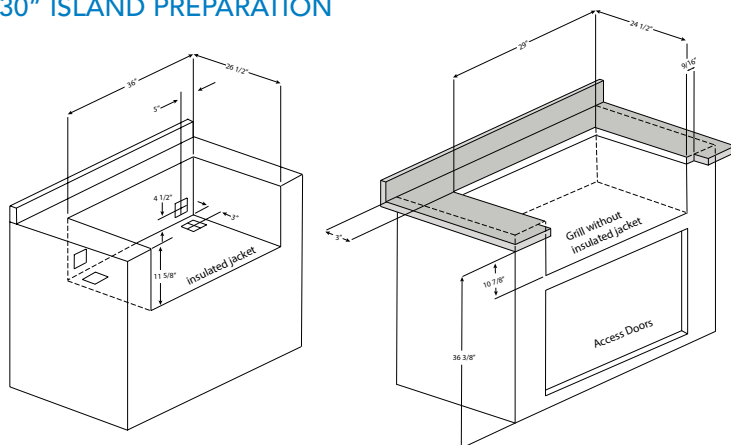
Lynx Hood Assist Kit

Removable large-capacity smoker box

Stainless steel grilling grates

Dual-position internally powered rotisserie w/ heavy-duty 3-speed motor & rear infrared burner

30" ISLAND PREPARATION



4" square holes for gas and electrical connections both left and right sides(rear or bottom access). Make these holes in the frame based on your requirements. 120V GFI outlet must be located within 6' of the 4" hole.

If using a countertop with overhang a 9/16" notch is required.

COOKING SURFACE

- 840 sq. in. cooking surface (600 primary / 240 secondary)

SHIPPING WEIGHTS & DIMENSIONS

- Built-in Grill: 241 lbs. / 38 1/2" x 34 1/4" x 37"
- Freestanding Grill: 362 lbs. / 38 1/2" x 34 1/4" x 58 1/2"

COMPLEMENTARY PRODUCTS

- Side Burner (see page 37)
- Outdoor Refrigeration (see pages 38-41)
- Cocktail Station (see page 45)
- Access Doors and Storage Systems (see page 46-49)
- Patio Heater (see page 50)

MODEL	DESCRIPTION
L30R-1	30" Built-In Grill w/ Rotisserie
L30PSR-2	30" Built-In Grill - 1 ProSear2 IR Burner w/ Rotisserie
L30ASR	30" Built-In Grill - All Trident IR Burner w/ Rotisserie
LIJ30	Insulated Jacket for 30" Built-In-Grill
CC30	30" Carbon Fiber Vinyl Cover (Built-In)

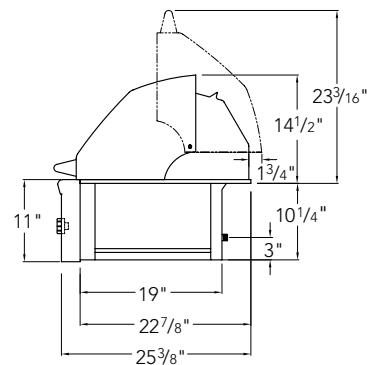
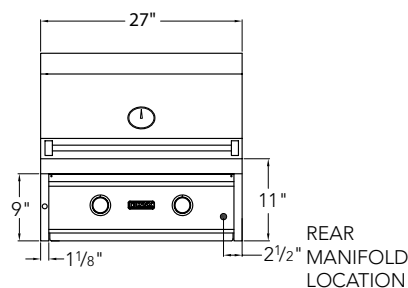
NOTE: Must specify gas type—NG for Natural Gas or LP for Propane

NOTE: For planning and installation details, including dimensions, specification sheets, and CAD drawings please visit the Support/Product Documents section of the Lynx website: lynxgrills.com

27" PROFESSIONAL GRILL



Built-In



27" PROFESSIONAL BUILT-IN GRILL

Model No. L27PSR-2

ProSear2 and all briquette models available
(up to 50,000 BTUs)

685 sq. in. cooking surface (470 primary, 215 secondary)

Hot surface ignition system

Heat stabilizing design

Control illumination w/ blue LEDs

Halogen grill surface light

Temperature gauge

Fluid rotation handle

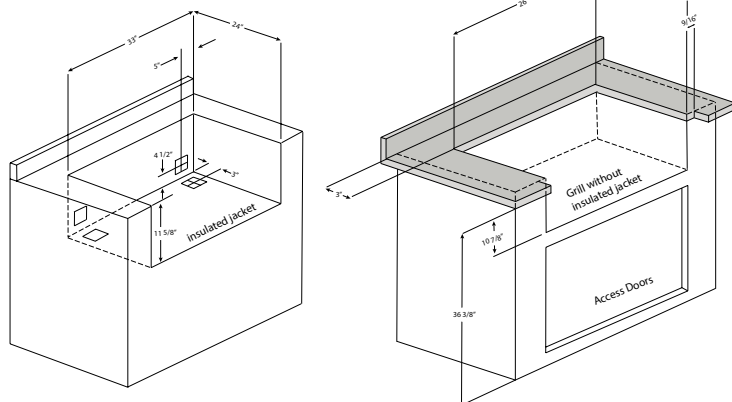
Lynx Hood Assist Kit

Removable large-capacity smoker box

Stainless steel grilling grates

Dual-position internally powered rotisserie w/ heavy-duty
3-speed motor & rear infrared burner

27" ISLAND PREPARATION



4" square holes for gas and electrical connections both left and right
sides(rear or bottom access). Make these holes in the frame based on your
requirements. 120V GFI outlet must be located within 6' of the 4" hole.

If using a countertop with overhang a 9/16" notch is required.

COOKING SURFACE

- 685 sq. in. cooking surface
(470 primary / 215 secondary)

SHIPPING WEIGHTS & DIMENSIONS

- Built-In Grill: 200 lbs. / 38 1/2" x 34 1/4" x 37"
- Freestanding Grill: 295 lbs. / 38 1/2" x 34 1/4" x 58 1/2"

COMPLEMENTARY PRODUCTS

- Side Burner (see page 37)
- Outdoor Refrigeration (see pages 38-41)
- Cocktail Station (see page 45)
- Access Doors and Storage Systems (see page 46-49)
- Patio Heater (see page 50)

MODEL	DESCRIPTION
L27R-2	27" Built-In Grill w/ Rotisserie
L27PSR-3	27" Built-In Grill - 1 ProSear2 IR Burner w/ Rotisserie
LJ27	Insulated Jacket for 27" Built-In-Grill
CC27	27" Carbon Fiber Vinyl Cover (Built-In)

NOTE: Must specify gas type—NG for Natural Gas or LP for Propane

NOTE: For planning and installation details, including dimensions, specification sheets, and CAD drawings please visit the
Support/Product Documents section of the Lynx website: lynxgrills.com

PROFESSIONAL GRILLS: FREESTANDING

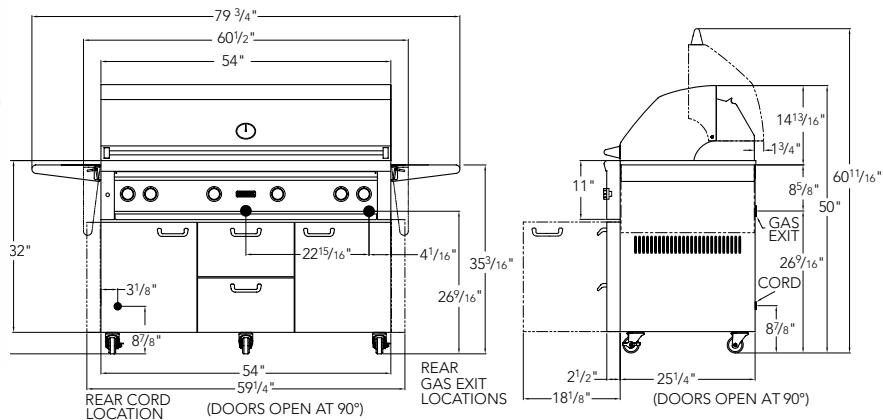


54" PROFESSIONAL FREESTANDING GRILL

Model No. L54PSFR-2



Freestanding

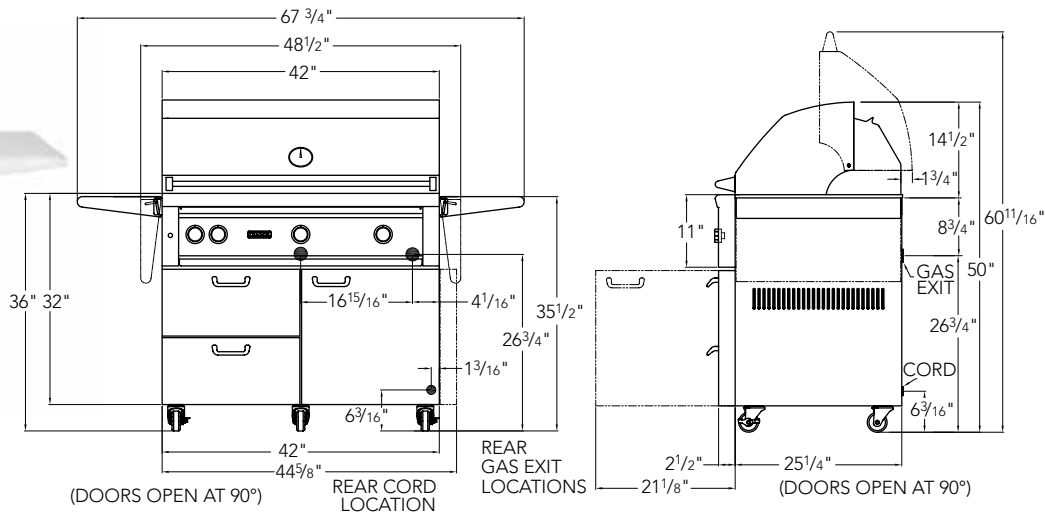


42" PROFESSIONAL FREESTANDING GRILL

Model No. L42PSFR-2



Freestanding

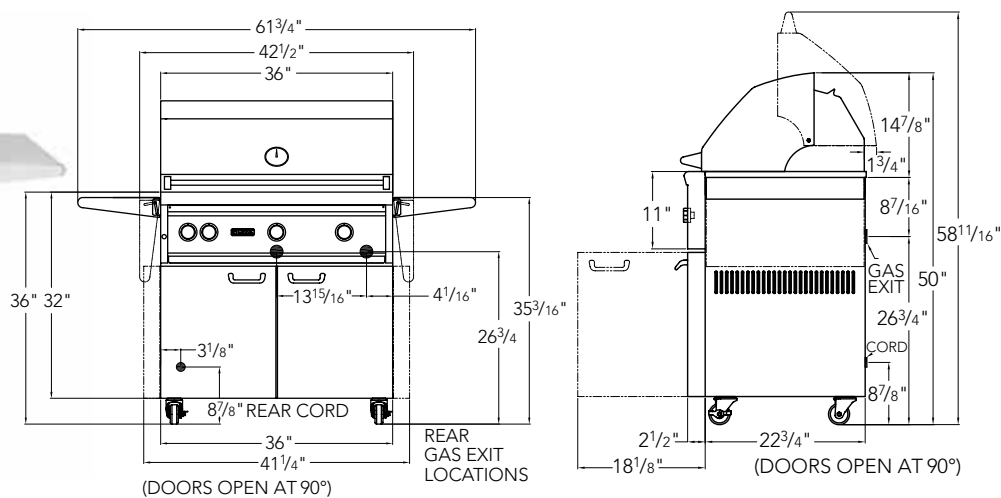


36" PROFESSIONAL FREESTANDING GRILL

Model No. L36PSFR-2



Freestanding



PROFESSIONAL GRILLS: FREESTANDING

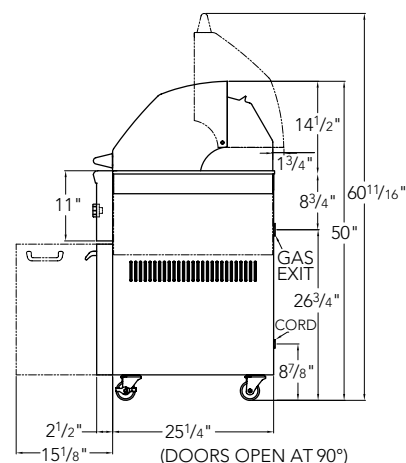
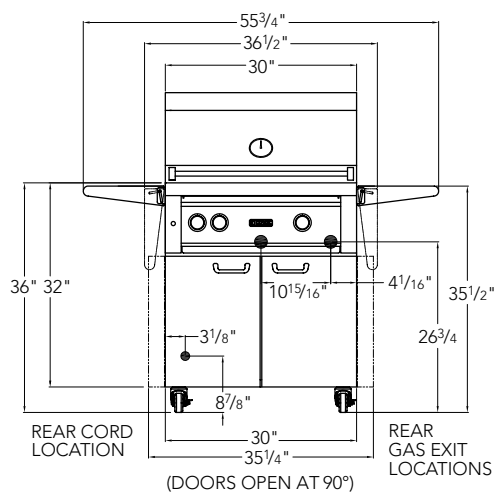


30" PROFESSIONAL FREESTANDING GRILL

Model No. L30PSFR-2



Freestanding

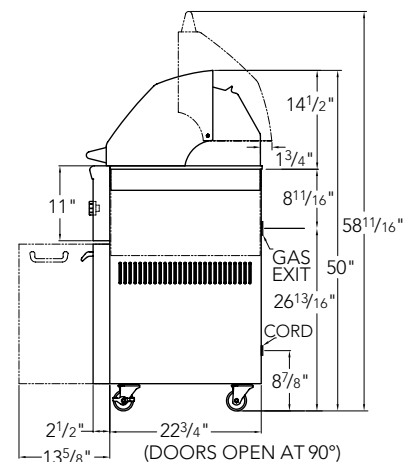
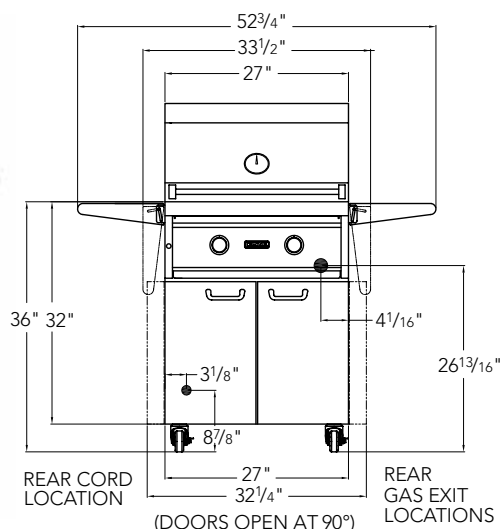


27" PROFESSIONAL FREESTANDING GRILL

Model No. L27PSFR-2



Freestanding



CART MOUNTED DOUBLE SIDE BURNER

MODEL LCB2-3

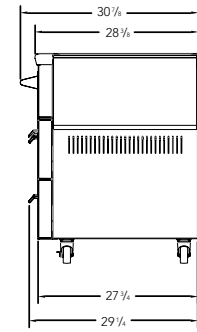
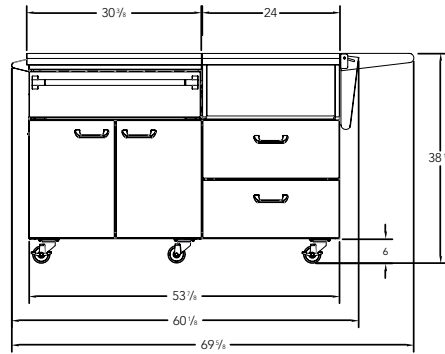
- Finished seams w/ finely polished edges
- Available for cart-mounted applications

MODEL	DESCRIPTION
L54PSFR-2	54" Freestanding Grill - 1 ProSear2 IR Burner w/ Rotisserie
L42PSFR-2	42" Freestanding Grill - 1 ProSear2 IR Burner w/ Rotisserie
L42ASFR	42" Freestanding Grill - All Trident IR Burner w/ Rotisserie
L36PSFR-2	36" Freestanding Grill - 1 ProSear2 IR Burner w/ Rotisserie
L36ASFR	36" Freestanding Grill - All Trident IR Burner w/ Rotisserie
L30PSFR-2	30" Freestanding Grill - 1 ProSear2 IR Burner w/ Rotisserie
L30ASFR	30" Freestanding Grill - All Trident IR Burner w/ Rotisserie
L27FR-2	27" Freestanding Grill with Rotisserie
L27PSFR-3	27" Freestanding Grill - 1 ProSear2 IR Burner with Rotisserie
LCB2-3	Cart Mounted Double Side Burner

NOTE: Must specify gas type—NG for Natural Gas or LP for Propane **NOTE:** For planning and installation details, including dimensions, specification sheets, and CAD drawings please visit the Trade Resources section of the Lynx website: lynxgrills.com



Serve and Prep Countertop
on Mobile Kitchen Cart

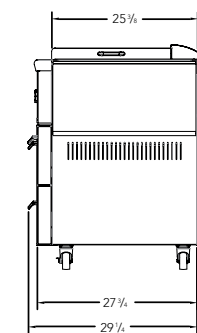
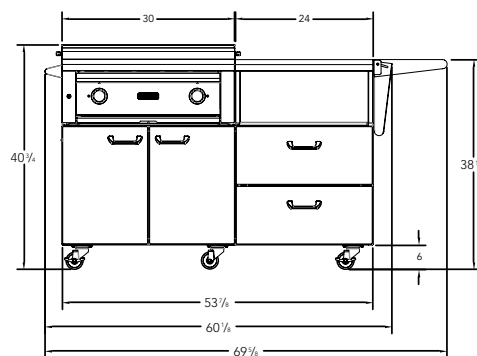


SHIPPING WEIGHTS & DIMENSIONS

- Countertop: 15 lbs. – 33 x 30 x 10
- Cart: 250 lbs. – 54 1/2 x 63 1/4 x 34



Asado on Mobile Kitchen Cart



COOKING SURFACE

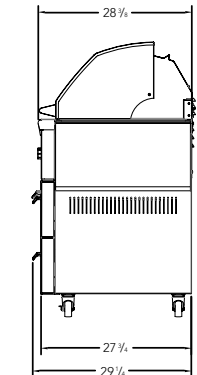
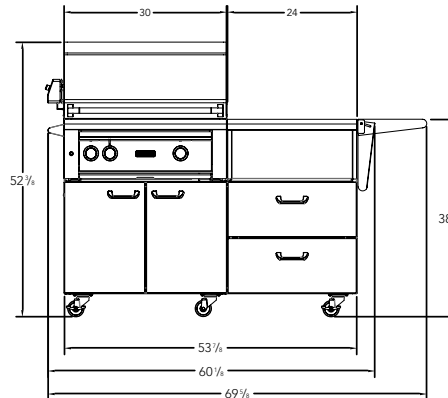
- 525 sq. in. cooking surface

SHIPPING WEIGHTS & DIMENSIONS

- Built-In: 280 lbs.. – 38 1/2 x 34 1/4 x 23
- Cart: 250 lbs.. – 54 1/2 x 63 1/4 x 34



30" Grill on Mobile Kitchen Cart



COOKING SURFACE

- 840 sq. in. cooking surface
(600 primary/240 secondary)

SHIPPING WEIGHTS & DIMENSIONS

- Built-In Grill: 241 lbs. – 38 1/2 x 34 1/4 x 37
- Cart: 250 lbs. – 54 1/2 x 63 1/4 x 34

MODEL	DESCRIPTION
LSERVE	Serve & Prep Countertop
LSERVE-M	Serve & Prep Countertop on Mobile Kitchen Cart
L30AG-M	30" Asado Grill on Mobile Kitchen Cart
LSMKM	30" Smoker on Mobile Kitchen Cart (see page 19)
L30R-M	30" Grill w/ Rotisserie on Mobile Kitchen Cart
L30PSR-M	30" Grill - 1 ProSear2 IR w/ Rotisserie on Mobile Kitchen Cart
L30ASR-M	30" Grill - All Trident IR w/ Rotisserie on Mobile Kitchen Cart
LMKC54	54" Mobile Kitchen Cart
CCAGSERVE	Asado/Serve Carbon Fiber Vinyl Cover (Mobile Kitchen Cart)
CC30M	30" Grill Carbon Fiber Vinyl Cover (Mobile Kitchen Cart)
CCSMKM	Smoker Carbon Fiber Vinyl Cover (Mobile Kitchen Cart)

Shown: Asdao by Lynx™



FEATURES OF THE LYNX ASADO GRILL

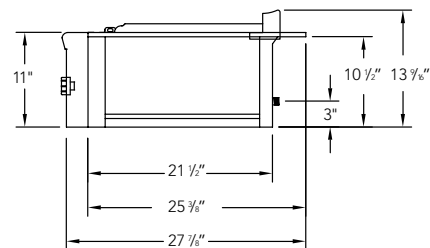
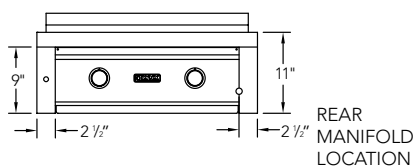
- Two Trident ProSear2 variable temperature burners
- 525 sq. in. cooking surface
- Full temperature range controlled valves
- Durable multi-layer grilling surface of aluminum sandwiched between two sheets of stainless steel
- Control illumination w/ blue LEDs
- Removable dual grease trays for easy cleaning
- Removable grilling surface for convenient cleaning & maintenance
- Includes attractive stainless steel cover
- Fits 30" grill cut-out dimensions

For great recipes, visit www.lynxgrills.com/recipes

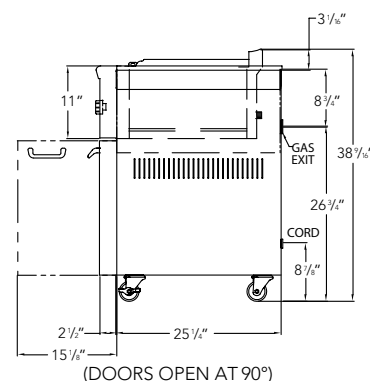
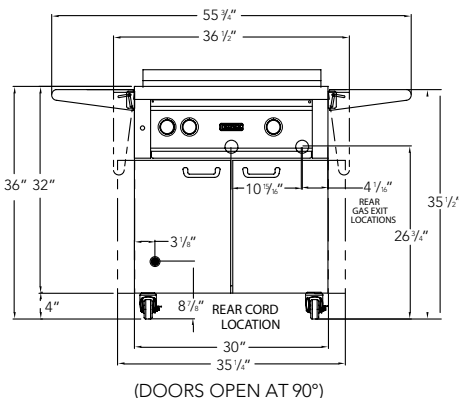




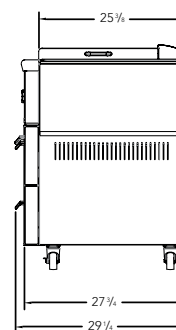
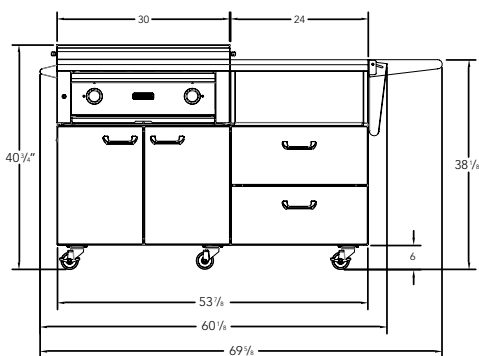
Built-In



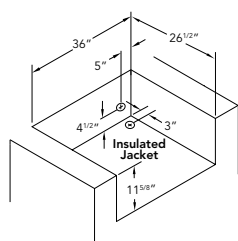
Freestanding



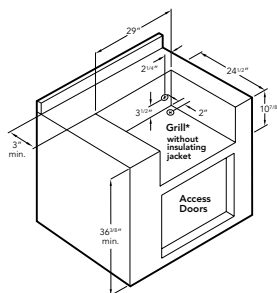
Asado on Mobile Kitchen Cart



30" ISLAND PREPARATION



4" square holes for gas and electrical connections both left and right sides (rear or bottom access). Make these holes in the frame based on your requirements. 120V GFI outlet must be located within 6' of the 4" hole.



COOKING SURFACE

- 525 sq. in. cooking surface

SHIPPING WEIGHTS & DIMENSIONS

- Built-In Grill: 208 lbs. – 38 1/2 x 34 1/4 x 23
- Freestanding Grill: 250 lbs. – 54 1/2 x 63 1/4 x 34

COMPLEMENTARY PRODUCTS

- Access Doors & Storage Systems (see page 46-49)
- Covers (see page 53)

MODEL	DESCRIPTION
L30AG	30" Asado Built-In Grill
L30AGF	30" Asado Freestanding Grill
LIJ30	Insulated Jacket for 30" Asado Built-In
L30AG-M	30" Asado Grill on Mobile Kitchen Cart
LMKC54	54" Mobile Kitchen Cart
CCASADO	30" Asado Carbon Fiber Vinyl Cover (built-in)
CCASADOF	30" Asado Carbon Fiber Vinyl Cover (freestanding)
CCAGSERVE	Asado Grill or Serve Counter Carbon Vinyl Cover (Mobile Kitchen Cart)

NOTE: Must specify gas type—NG for Natural Gas or LP for Propane

NOTE: For planning and installation details, including dimensions, specification sheets, and CAD drawings, please visit the Support/Product Documents section of the Lynx website: lynxgrills.com



FEATURES OF THE NAPOLI OUTDOOR OVEN

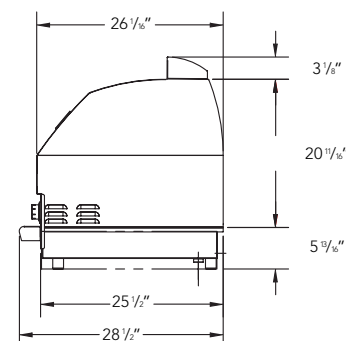
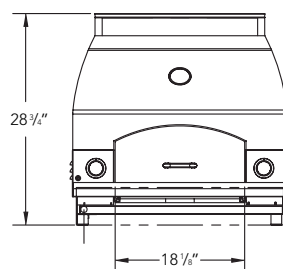
- Specially formulated concrete refractory interior dome & cooking surface
- 18" x 22" stone surface drawer pulls forward for easy access
- Preheats quickly to 700° F for a quick pizza cook
- Variable infrared heating system
- Hand-polished mirrored edges
- Blue LED control knob illumination
- Interior halogen light
- Reversible top chimney vents towards front or rear
- Removable front door
- 400 sq. in. cooking surface
- Includes 12 ¼" x 20" aluminum pizza peel
- Freestanding cart has 606 sq. in. food prep area & storage drawers



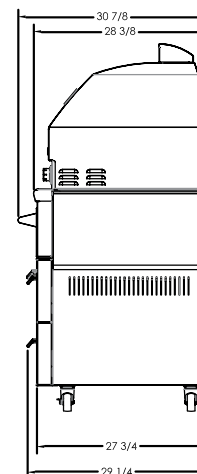
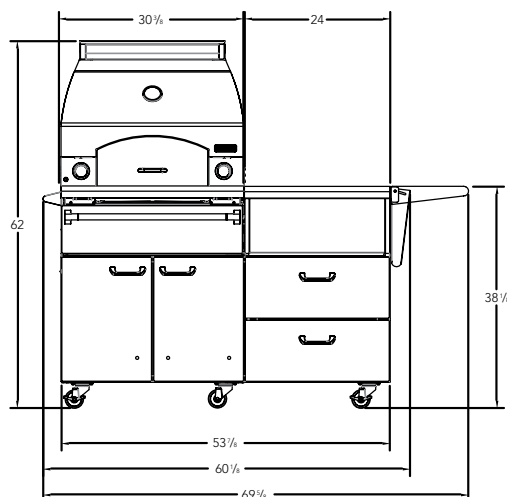
For great recipes, visit www.lynxgrills.com/recipes



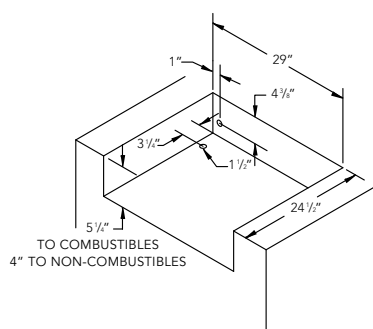
Built-In or Countertop



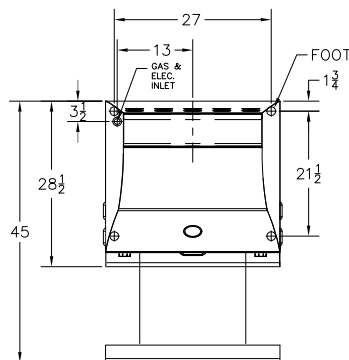
Freestanding w/ Cart



30" ISLAND PREPARATION



Built-In



Countertop

COOKING SURFACE

- 400 sq. in. cooking surface

SHIPPING WEIGHTS & DIMENSIONS

- Built-In / Counter: 275 lbs. – 30 x 38 1/2 x 34 1/4
- Cart: 250 lbs. – 54 1/2 x 63 1/4 x 34

COMPLEMENTARY PRODUCTS

- Access Doors and Storage Systems (see page 46-49)
- Covers (see page 53)

MODEL	DESCRIPTION
LPZA	Napoli Outdoor Oven, Countertop or Built-In
LPZAF	Napoli Outdoor Oven, Freestanding
LMKC54	54" Mobile Kitchen Cart
CCLPZA	30" Napoli Outdoor Oven Carbon Fiber Vinyl Cover (Countertop)
CCLPZAB	30" Napoli Outdoor Oven Carbon Fiber Vinyl Cover (Built-In)
CCLPZAF	30" Napoli Outdoor Oven Carbon Fiber Vinyl Cover (Freestanding)
LPZANGK	LP - NG Conversion Kit
LPZALPK	NG - LP Conversion Kit

NOTE: Must specify gas type—NG for Natural Gas or LP for Propane

NOTE: For planning and installation details, including dimensions, specification sheets, and CAD drawings please visit the Support/Product Documents section of the Lynx website: lynxgrills.com



Donatella Arpaia: Cooking on her prep Center (LSB2PC)

LEISURE MEETS LUXURY

Whether it's indoors or outdoors, a kitchen is more than a cook-top or a grill. It's the point around which entertaining revolves.

To help you welcome your family and guests to an exquisite outdoor dining experience, Lynx is ready with a full complement of entertainment products ranging from refrigerators to warming drawers. All of the most extraordinary equipment you'll want for everyday cooking and special entertaining.

Take, for example, our outdoor kitchen storage system. It's artfully designed to keep all your essentials right where you want them. The Storage Door & Double Drawer Combination comes fully equipped with soft-close drawer slides, soft close hinge on the door, and illuminating interior lighting. From tools and condiments, to towels and wood chips, you'll know that everything is close at hand so you can prepare memorable cuisine like a professional chef, without having to leave your grill—or your guests—to go looking for what you need.

Timeless elegance and quality in every detail define the aura of luxury that Lynx products bring to the homes that select them. Their appearance, as well as their performance, elevates the dining experience. And the most special dining experience of all is dining with your family. All of our products are designed in the same Lynx way: with every feature thought through, fully engineered, and crafted to give you lasting satisfaction.



MODELS LSB1-3 / LSB2-2

SINGLE & DOUBLE SIDE BURNERS

- 15,000 BTU brass burners capable of delivering intense high heat & a low simmer
- Burners & burner basin are sealed for easy cleaning
- Control illumination w/ blue LEDs
- Hot surface ignition system
- Stainless steel cover protects burner(s) when not in use
- Single or double burner configurations
- Continuously welded joints for quality, strength & beauty
- Finished seams w/ finely polished edges
- Available for cart-mounted applications (LCB2-3)

MODEL LSB2PC-1

DOUBLE SIDE BURNER W/ INTEGRAL PREP CENTER

- Two 15,000 BTU brass burners capable of delivering intense high heat & a low simmer
- Burners & burner basin are sealed for easy cleaning
- Control illumination w/ blue LEDs
- Hot surface ignition system
- Two removable stainless steel covers for prep area & side burners
- Lift-out bamboo cutting board provides a convenient prep area
- Extended depth utility drawer for utensil & condiment storage also accommodates oversized utensils
- Available for built-in application only

MODEL LPB

POWER BURNER

- Cast brass burner rated at 47,000 BTU
- Burner features dual rings that can be operated independently for maximum heat control (6,000 BTU up to 47,000 BTU)
- Control illumination w/ blue LEDs
- Hot surface ignition system
- Removable stainless steel cover
- Fully extendable drip pan
- Removable center grate feature allows unit to accommodate a commercial style round-bottom wok
- Replace the center grate and the unit is ready for an oversized stockpot or pan
- Available for built-in application only



MODEL	DESCRIPTION
LSB1-3	Built-In Single Side Burner
LSB2-2	Built-In Double Side Burner
LSB2PC-1*	Double Side Burner w/ Integrated Prep Center
LPB*	Power Burner
LCB2-3	Cart-Mounted Double Side Burners
CCLSB1	Single Side Burner Carbon Fiber Vinyl Cover (Built-In)
CCLSB	Double Side Burner Carbon Fiber Vinyl Cover (Built-In)
CCLSB2PC	Double Side Burner w/ Prep Center Carbon Fiber Vinyl Cover
CCLPB	Power Burner Carbon Fiber Vinyl Cover

*Models LSB2PC-1 and LPB are available for built-in application only

NOTE: Must specify gas type—NG for Natural Gas or LP for Propane; may require Lynx Accessory Switch Kit (LASK)

NOTE: For planning and installation details, including dimensions, specification sheets, and CAD drawings please visit the Support/Product Documents section of the Lynx website: lynxgrills.com



Shown: 24" Refrigerator and Beverage Dispenser (LM24REFL and LM24BFR)



MODEL LM24DWR

24" REFRIGERATOR DRAWER

- UL listed for outdoor use
- Stainless steel exterior
- Energy Star rated
- Temperature range 34° – 42° F
- Audible alarms for door ajar
- Drawer lock for security
- Blue LED lighting
- Full extension drawers
- 5.0 cu. ft.



MODEL LM24REFL / LM24REFR

24" REFRIGERATOR

- UL listed for outdoor use
- Stainless steel exterior
- Energy Star rated
- Temperature range 34° to 42° F
- 5.3 cu. ft.
- Audible alarms for door ajar
- Two fully adjustable stainless steel shelves
- Door lock for security
- Blue LED lighting in interior
- Ships either left or right hinge (select appropriate model)



MODEL LM24REFCL / LM24REFCR

24" REFRIGERATOR & FREEZER COMBINATION

- Energy Star rated
- CSA certified for outdoor use to withstand elements like rain, high humidity and heat
- Tested to perform in temperatures as high as 115° F
- Adjustable shelving allows easy customization to meet your storage needs
- Stainless steel exterior
- Blue LED lighting on interior
- Interior 1 cu. ft. freezer with self-closing door is large enough to hold up to 12 pints of ice cream
- Automatic defrost provides frost-free freezer operation
- Optional ice maker kit available to produce and store up to 13 lbs. of crescent ice (LMICEKIT)
- Audible and visual alarms signal when door is left ajar to protect food freshness and minimize energy use
- Refrigerator - 3.9 cu. ft.
- Freezer - 1.0 cu. ft.
- Ships either left or right hinge (select appropriate model)



MODEL LM24BFL / LM24BFR

24" BEVERAGE DISPENSER

- UL listed for outdoor use
- Stainless steel exterior
- Energy Star rated
- Digital readout
- Two shelves convert unit to an all-refrigerator capable of storing perishables
- Temperature range 34° – 46° F
- Audible alarms for door ajar
- Includes drain pan and floor shield
- Thermal-efficient insulated cabinet ensures optimum energy efficiency & cooling performance
- Secure CO₂ tank storage area & drain bottle
- Door lock for security
- Rear port for external CO₂ tank option
- Ships either left or right hinge (select appropriate model)
- Most versatile outdoor beverage dispenser on the market, offers full beverage storage, or configured as a kegerator, designed for half kegs, pony kegs and sixth barrels/Cornelius kegs.
- Optional beer taps available (L24TWS, L24TWD)



MODEL L24TWS
Single Tower Head



MODEL L24TWD
Double Tower Head



Shown: 15" Lynx Refrigerator, Right Hinge (LM15REFR)



MODEL LM15WINEL / LM15WINER

15" WINE CELLAR

- 2.7 cu. ft. capacity
- Can store up to 24 bottles of wine total w/ (6) 4-bottle smooth-glide wine racks
- Stainless steel exterior
- Protects wine from agitation, allowing it to come to full maturation
- Heavy-gauge wine racks are shaped to safely cradle each wine bottle
- Full-extension ball bearing smooth-glide shelf system
- Blue LED lighting for interior
- Now even quieter operation thanks to exclusive design enhancements to buffer & minimize sound
- Ships either left or right hinge (select appropriate model)



MODEL LM15REFL / LM15REFR

15" REFRIGERATOR

- UL listed for outdoor use
- Stainless steel exterior
- Energy Star rated
- Temperature range 34° to 42° F
- 2.73 cu. ft.
- Audible alarms for door ajar
- Two fully adjustable stainless steel shelves
- Door lock for security
- Blue LED lighting for interior
- Ships either left or right hinge (select appropriate model)



MODEL L15ICE

15" OUTDOOR ICE MACHINE

- UL listed for outdoor use
- Seamless stainless steel exterior
- Capable of producing 55 lbs. of ice in a 24 hr. period
- 27 lbs. of actual ice storage
- Adjustable leveling legs
- Optional drain pump available (Model L15ICE-DP)
- Right hinged door only
- 33 3/8" H x 14 7/8" W x 22 1/2" D





MODEL L42CC-1

42" WARMING DRAWER AND CONVENIENCE CENTER

- Warming drawer, storage cabinet & utility drawer in one convenient unit
- Sliding LP tank tray for safe & easy LP tank access
- Full width & depth utility drawer accommodates oversized grill tools, towels & condiments
- Warming drawer features are identical to the 30" Outdoor warming drawer (Model L30WD-1)
- Weather resistant stainless steel construction



MODEL L30WD-1

30" BUILT-IN WARMING DRAWER

- Temperature range of 90° – 220° F
- Equipped w/ two removable steam pans, lids & steam racks
- Moist & crisp settings allow you to keep food at the desired texture
- Concealed heating element allows you to use the drawer as a towel or robe warmer
- "On" indicator light reminds you that the drawer is on
- Weather resistant stainless steel construction

MODEL	DESCRIPTION
L15ICE	15" Outdoor Ice Machine
L15ICE-DP	Optional Drain Pump for 15" Outdoor Ice Machine
LM15REFL/R	15" Outdoor Refrigerator
LM15WINEL/R	15" 20 Bottle Wine Cellar
LM24REFL/R	24" Outdoor Refrigerator
LM24REFCL/R	24" Outdoor Refrigerator & Freezer Combination
LMICEKIT	Ice Maker Kit for LM24REFCL / LM24REFCR
LM24BFL/R	24" Outdoor Refrigerator / Convertible to Beverage Dispenser
L24TWS	Single Tap Tower Kit
L24TWD	Double Tap Tower Kit
LM24DWR	24" Two Drawer Refrigerator
L30WD-1	30" Warming Drawer
L42CC-1	42" Convenience Center with Warming Drawer, Utility Drawer and Tank Storage
CCTWR	Beverage Dispenser / Single Tower Tap Head Carbon Fiber Vinyl Cover

NOTE: For planning and installation details, including dimensions, specification sheets, and CAD drawings please visit the Support/Product Documents section of the Lynx website: lynxgrills.com



Cocktail Station Shown with: Optional Pass Shelf



MODEL LSK30
SINK

- Basin size 26 ¾" x 16 ½" x 10"
- 3 ½" drain w/ stopper & basket
- Accommodates disposal unit
- Fully insulated (ice capacity 30 lbs.)
- Sized to accommodate faucet LPFK
- Blue LED lights & switch
- Stainless steel cover included



MODEL LSK24
SINK

- Basin size 20 ¾" x 16 ½" x 10"
- 3 ½" drain w/ stopper & basket
- Accommodates disposal unit
- Fully insulated (ice capacity 24 lbs.)
- Sized to accommodate faucet LPFK
- Blue LED lights & switch
- Stainless steel cover included



MODEL LSK18
SINK

- Basin size 14 ¾" x 16 ½" x 10"
- 3 ½" drain w/ stopper & basket
- Accommodates disposal unit
- Fully insulated (ice capacity 18 lbs.)
- Sized to accommodate faucet LPFK
- Blue LED lights & switch
- Stainless steel cover included



MODEL LPFK
OUTDOOR FAUCET

- Pull down feature
- Solid stainless steel faucet
- Outdoor rated 10 year warranty
- Hot/cold or cold only
- Washerless operation
- High arch fits larger pots & pans
- Single lever handle operation
- Sleek modern design



MODEL LCS30
30" BUILT-IN COCKTAIL PRO

- Built-in bottle opener w/ integral cap catcher
- Front panel illumination w/ blue LEDs
- Bottle boots for chilling juices, wines and mixes
- Speedrail front bottle storage for quick & easy access
- Insulated ice bin w/ sliding stainless steel cover holds ice for extended periods of time
- Stainless steel sink w/ pull down faucet
- Convenient integrated towel holder



MODEL LCS30F
30" FREESTANDING COCKTAIL PRO

Same features as LCS30 (left) plus:

- Two fold-down shelves
- Doors include bottle shelves that are removable for easy cleaning
- Four commercial casters make these units easy to move
- Rigid welded construction ensures strength & longevity
- Shown w/ optional pass shelf w/ halogen light (LCSPS)

MODEL	DESCRIPTION
LSK18	18" Insulated Sink
LSK24	24" Insulated Sink
LSK30	30" Insulated Sink
LPFK	Pull Down Gooseneck Faucet
LCS30	Built-In Cocktail Pro Station
LCS30F	Freestanding Cocktail Pro Station
LCSPS	Pass Shelf accessory with halogen light
CCLSK18	18" Sink Carbon Fiber Vinyl Cover (for sink with faucet LPFK)
CCLSK24	24" Sink Carbon Fiber Vinyl Cover (for sink with faucet LPFK)
CCLSK30	30" Sink or 30" Cocktail Carbon Fiber Vinyl Cover (for sink/cocktail pro w/ faucet LPFK)

NOTE: For planning and installation details, including dimensions, specification sheets, and CAD drawings, please visit the Support/Product Documents section of the Lynx website: lynxgrills.com



VENTANA STORAGE COLLECTION

The Lynx Ventana Collection of elegant outdoor storage solutions is named after the Ventana Wilderness, 240,000 acres along the Big Sur coast in central California that is renowned as a destination for restoration of the spirit and soul. This coast has been described as “the greatest meeting of mountains and sea”.

Combining beauty with functionality, smooth front facings, recessed handles, and handcrafted framing merge to form a sleek and contemporary balance to your Lynx outdoor kitchen. Dust and water resistant, each door and drawer softly closes itself as if to punctuate the elegance of an artistic statement. The Ventana Collection from Lynx proves that small things can make a big difference.



SEALED FRAME



HANDCRAFTED FRAMING



SOFT CLOSE HINGES



SOFT CLOSE SLIDES



**FLUSH MOUNTED REVERSIBLE
HANDLE**



MODEL L20TR-4

OUTDOOR TRASH & RECYCLE CENTER

- Robust commercial design
- Slide out trash/recycle bins
- Easily removable for cleaning
- Includes two removable bins for trash & recycling
- Sealed along framing to help aid in dust & water prevention
- Flush mounted reversible handle
- No crevices for insects to nest
- Sleek contemporary look



MODEL LTA30-4

30" TRASH CENTER & DOUBLE DRAWERS

- Combination trash center/storage system
- Robust commercial design
- Slide out trash/recycle bins
- Accommodates an LP tank
- Two stacked drawers
- Sealed along framing to help aid in dust & water prevention
- Flush mounted reversible handle
- Easy to clean
- No crevices for insects to nest
- Sleek contemporary look
- Illuminated drawers & door space



MODEL LTWL

OUTDOOR TOWEL DISPENSER

- Provides a concealed, attractive option
- Accommodates a standard roll of paper towels
- Heavy-duty welded construction
- Door swings down
- Sealed along framing to help aid in dust & water prevention
- Soft close hinge
- Flush mounted reversible handle



MODEL LTB

OUTDOOR TOWEL BAR

- Add a convenient towel bar to the face of any Lynx outdoor kitchen
- Complements the aesthetic of other Lynx products with matching handle & end cap design



MODEL L18TS

TRASH CHUTE

- Perfect complement to our Trash Center
- Convenient disposal without opening the door
- Includes slide-away commercial cutting board
- Stainless steel cover w/ professional handle

MODEL	DESCRIPTION
L20TR-4	Lynx 20" Trash & Recycle Bins - Slide-out, Framed
LTA30-4	30" Trash Center & Double Drawer Combo
LTWL	Paper Towel Dispenser
LTB	Towel Bar
L18TS	Countertop Trash Chute w/ Cutting Board
CCTS	Trash Chute Carbon Fiber Vinyl Cover

NOTE: For planning and installation details, including dimensions, specification sheets, and CAD drawings please visit the Support/Product Documents section of the Lynx website: lynxgrills.com



MODELS LSA30-4 / LSA36-4 / LSA42-4

OUTDOOR KITCHEN STORAGE SYSTEM

- Access door & double drawer combination
- 30", 36" & 42" sizes available
- Each drawer is 25 1/2" deep
- Illuminated drawers & door space
- Soft close drawer slides
- Soft close door hinges
- Sealed along framing to help aid in dust & water prevention
- Flush mounted reversible handle
- Door Accessory kits available
- Easy to clean
- No crevices for insects to nest
- Sleek contemporary look



**MODELS LDR18L-4 / LDR18R-4 / LDR24L-4 / LDR24R-4
LDR30T-4 / LDR36T-4 / LDR42T-4**

SINGLE ACCESS DOORS / DOUBLE ACCESS DOORS

- 18", 24", 30", 36" & 42" sizes available
- Left or right-hinge available on single access doors
- Sealed along framing to help aid in dust & water prevention
- Soft close hinge
- Flush mounted reversible handle
- Door Accessory kits available
- Easy to clean
- No crevices for insects to nest
- Sleek contemporary look



DOOR ACCESSORY KIT

- Two bottle holders
- One towel bar

MODEL	DESCRIPTION
LPA36-4	Sealed Pantry
LMD-4	Modular Drawer (single drawer)
LMDKIT	Modular Drawer Kit (allows you to stack model LMD 2 or 3 high)
LDW16-4	Double Drawers
LDW19-4	Extra Large Double Drawers
LSA30-4	30" Access Door & Double Drawer Combination
LSA36-4	36" Access Door & Double Drawer Combination
LSA42-4	42" Access Door & Double Drawer Combination
LDR18L-4	18" Single Access Door (Hinge Left)
LDR18R-4	18" Single Access Door (Hinge Right)
LDR24L-4	24" Single Access Door (Hinge Left)
LDR24R-4	24" Single Access Door (Hinge Right)
LDR30T-4	30" Double Access Doors
LDR36T-4	36" Double Access Doors
LDR42T-4	42" Double Access Doors
LDRKS	Door Accessory Pack Includes: 2 bottle holders & 1 Towel Bar & Mounting Kit for 18" & 30" doors
LDRKL	Door Accessory Pack Includes: 2 bottle holders & 1 Towel Bar & Mounting Kit for 24", 36" & 42" doors

NOTE: For planning and installation details, including dimensions, specification sheets, and CAD drawings please visit the Support/Product Documents section of the Lynx website: lynxgrills.com



MODEL LPA36-4

SEALED PANTRY

- Magnetic gasket ensures tight seal to protect cookware, dry goods & more from pests & weather
- Full extension glide out drawers
- Adjustable wire shelf
- Illuminated drawers
- Storage space is 31" x 18" x 23"
- Easy to clean
- No crevices for insects to nest
- Sleek contemporary look
- Door lock for security



MODEL LMD-4

MODULAR STORAGE DRAWER

- Interior drawer: 20 ³/₈" W x 23" D x 4 ⁷/₈" H
- Drawer face: 7 ⁵/₈" H x 23 ⁵/₈" W
- Shallow depth, easy to organize storage solution
- Rigid stainless steel construction
- Full extension drawer slides for easy access to the back of the drawer
- Drawers can be installed individually or stacked in 2 or 3-drawer configurations
- 3-drawer configuration matches the height of Lynx LDR Access Doors
- A Modular Drawer Kit (Model LMDKIT) is required when drawers are stacked 2 or 3 high
- Flush mounted reversible handle
- Easy to clean
- No crevices for insects to nest
- Sleek contemporary look



MODEL LDW16-4

UTILITY DRAWERS - DOUBLE DRAWER

- Each drawer exterior is 16" wide
- Extended depth of 22" accommodates oversized items
- Fully extendable drawers on commercial stainless steel rollers facilitate smooth & consistent operation
- Rigid welded construction to ensure strength & longevity
- Soft close drawer slides
- Sealed along framing to help aid in dust & water prevention
- Flush mounted reversible handle
- Easy to clean
- No crevices for insects to nest
- Sleek contemporary look



MODEL LDW19-4

UTILITY DRAWERS - EXTRA LARGE DOUBLE DRAWER

- Each drawer exterior is 22" wide
- Extended depth of 22" accommodates oversized grill tools, spices, towels, or woodchips
- Fully extendable drawers on commercial stainless steel rollers facilitate smooth & consistent operation
- Rigid welded construction to ensure strength & longevity
- Soft close drawer slides
- Sealed along framing to help aid in dust & water prevention
- Flush mounted reversible handle
- Easy to clean
- No crevices for insects to nest
- Sleek contemporary look



MODEL LHPM

POST-MOUNTED INFRARED PATIO HEATER

- Robust commercial design & 304 stainless steel construction
- Innovative technology that reduces the center "hot spot" & distributes heat more evenly
- Polished "double surface" reflector intensifies heat output
- Large heat radius
- Specially designed for improved wind resistance
- Direct spark ignition w/ auto re-light
- Remote wall switch operation (LHPM-ELC switch kit included)
- Electronic Hi/Lo heat selection
- 2-Stage output from 53,000 BTU to 46,000 BTU
- Available only w/ Natural Gas



MODEL LHEM48

EAVE-MOUNTED PATIO HEATER

- All stainless steel welded construction
- Spark ignition w/ auto re-light
- Slim, attractive profile
- Decorative safety grill provides wind resistance
- Convenient, battery operated; requires no 110V electrical routing for basic installation
- Includes wireless, wall mounted, On/Off, Hi/Lo switch
- Includes an additional touch screen remote control (pictured)
- Variable output from 35,000 BTU to 24,000 BTU
- Temperature control from 45° – 90° F



MODEL	DESCRIPTION
LHPM	Post-Mounted Infrared Outdoor Heater (NG)
LHEM48	Eave-Mounted Heater
LHPM-BC	Base Mounting Cover (for use with LHPM Only)
LHPM-IC	Island Post Hole Cover
CCMD	Patio Heater Dome Carbon Fiber Vinyl Cover / Fits Models LHPM

NOTE: For planning and installation details, including dimensions, specification sheets, and CAD drawings please visit the Support/Product Documents section of the Lynx website: lynxgrills.com



MODELS

LIJ27 / LIJ30 / LIJ36 / LIJ42 / LIJ54

INSULATED JACKET

- Mandatory for grills installed in islands w/ combustible materials
- Attractive all welded, insulated construction



MODELS

LOH36 / LOH48 / LOH60

OUTDOOR VENT HOODS

- 3-speed motor control
- Internal or external blower (sold separately)
- UL rated for outdoors
- 50 watt halogen lights



MODEL LSTLP

SLIDING TANK TRAY

- This sliding tank tray provides easy access to your LP tank
- Available for 30", 42" and 54" freestanding cart models



NEW
AVAILABLE
SUMMER OF 2017

MODEL LSTK

LYNX STEAK KNIFE SET

- Set includes six 5 inch steakhouse style knives with beautiful wooden case
- Black and stainless steel handles
- Quality durable construction
- Blades slice easily through food

MODEL	DESCRIPTION
LOH36	36" Outdoor Vent Hood (Blower sold separately)
LOH48	48" Outdoor Vent Hood (Blower sold separately)
LOH60	60" Outdoor Vent Hood (Blower sold separately)
LOHE	External Blower Motor rated at 1,400 CFM
LOHI	Internal Blower Motor rated at 1,200 CFM
LOH1236	12" duct cover for 36" hood
LOH1836	18" duct cover for 36" hood
LOH1248	12" duct cover for 48" hood
LOH1848	18" duct cover for 48" hood
LOH1260	12" duct cover for 60" hood
LOH1860	18" duct cover for 60" hood
LIJ27	Insulated Jacket for 27" Grill
LIJ30	Insulated Jacket for 30" Grill and Asado Grill
LIJ36	Insulated Jacket for 36" Grill
LIJ42	Insulated Jacket for 42" Grill
LIJ54	Insulated Jacket for 54" Grill
LSTLP	Sliding Tank Tray, cart units 30", 42" and 54" only
LSTK	Lynx Steak Knife Set

NOTE: For planning and installation details, including dimensions, specification sheets, and CAD drawings please visit the Support/Product Documents section of the Lynx website: lynxgrills.com



MODEL RB8

ROTISSERIE BASKET

- Versatile cooking accessory, great for vegetables, chicken wings, roasting coffee beans & more
- Compatible w/ any Lynx or Sedona by Lynx rotisserie grill
- Works w/ both the rear rotisserie burner or standard grilling burners
- Easy-to-clean & dishwasher safe



MODEL GP

GRIDDLE PLATE

- Cook anything on your grill
- Easy-to-clean stainless steel surface
- 11" x 15" cooking surface
- Angled 5° slope front to rear to prevent spillage
- 4 feet firmly grip grates
- 2" high sides



MODEL LGRT

GRILLING TOOL SET

- 3-piece tool set w/ additional basting brush attachment
- Spatula has a serrated leading edge that allows tool to slide easily under food
- Cleaning tool helps eliminate baked foods from solid grates
- Tongs w/ locking mechanism to grip food easily
- Basting brush to easily baste juices onto food; attachment also works with cleaning tool
- Large, durable pakkaewood handles
- Ergonomic handle designed for maximum comfort, efficiency & ease of use



LYNX SONOMA BLEND SMOKING CHIPS

- Comes in 4 different flavors
- No soaking required

MODEL	DESCRIPTION
RB8	Rotisserie Basket
LGRT	Grilling Tool Set
GP	Griddle Plate
PROLPK-2	30" / 42" / 54" Grills - NG to LP Conversion Kit
PRONGK-2	30" / 42" / 54" Grills - LP to NG Conversion Kit
PRELPK-2	27" / 36" Grills - NG to LP Conversion Kit
PRENGK-2	27" / 36" Grills - LP to NG Conversion Kit
ASRLPK	All Trident 30" / 36" / 42" - NG to LP Conversion Kit
ASRNGK	All Trident 30" / 36" / 42" - LP to NG Conversion Kit
SLPK	Side Burners - NG to LP Conversion Kit
SNGK	Side Burners - LP to NG Conversion Kit
LPEK	12' extension cord between a Lynx Grill and a Lynx Accessory
LASK	Lynx Accessory Switch Kit - Switch & transformer to operate an accessory independently
LSCA	Woodchip Blend, Apple
LSCH	Woodchip Blend, Hickory
LSCM	Woodchip Blend, Mesquite
LSCP	Woodchip Blend, Pecan
LSCF	Woodchip Blend - Four Pack: Apple, Hickory, Mesquite & Pecan

NOTE: For planning and installation details, including dimensions, specification sheets, and CAD drawings please visit the Support/Product Documents section of the Lynx website: lynxgrills.com

FEATURES

- Custom tailored fit
- Deep embossed Lynx logo
- Extra-durable carbon fiber vinyl
- Thick felt lining to protect the sleek stainless steel finish
- Pocket seams w/ flexible nylon cord for a secure fit
- Rear vent to help expel moisture
- Nylon finger loops help pull & secure the cover over the grill



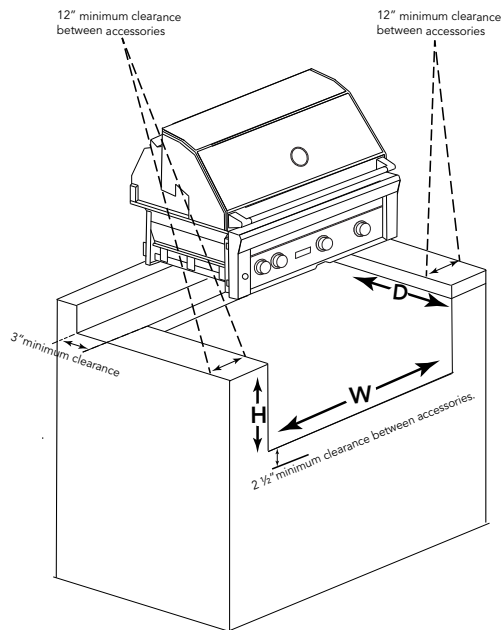
BUILT-IN GRILL COVER



FREESTANDING GRILL COVER

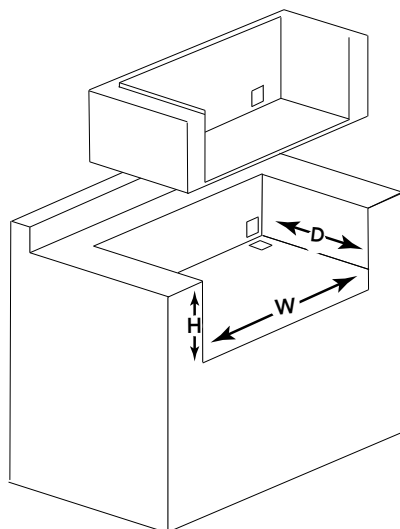
MODEL	DESCRIPTION
CC27	27" Carbon Fiber Vinyl Cover (Built-In)
CC27F	27" Carbon Fiber Vinyl Cover (Freestanding)
CC27FCB	27" Carbon Fiber Vinyl Cover (Freestanding w/ Side Burner)
CC30	30" Grill Carbon Fiber Vinyl Cover (Built-In)
CC30F	30" Grill or Smoker Carbon Fiber Vinyl Cover (Freestanding)
CC30FCB	30" Carbon Fiber Vinyl Cover (Freestanding w/ Side Burner)
CC30M	30" Grill Vinyl Cover (Mobile Kitchen Cart)
CC36	36" Carbon Fiber Vinyl Cover (Built-In)
CC36F	36" Carbon Fiber Vinyl Cover (Freestanding)
CC36FCB	36" Carbon Fiber Vinyl Cover (Freestanding w/ Side Burner)
CC42	42" Carbon Fiber Vinyl Cover (Built-In)
CC42F	42" Carbon Fiber Vinyl Cover (Freestanding)
CC42FCB	42" Carbon Fiber Vinyl Cover (Freestanding w/ Side Burner)
CC54	54" All Grill Carbon Fiber Vinyl Cover (Built-In)
CC54F	54" All Grill Carbon Fiber Vinyl Cover (Freestanding)
CC54FCB	54" All Grill Carbon Fiber Vinyl Cover (Freestanding w/ Side Burner)
CCAGSERVE	Asado (L30AG-M) or Serve Countertop (LSERVE-M) Carbon Fiber Vinyl Cover (Mobile Kitchen Cart)
CCASADO	30" Asado Carbon Fiber Vinyl Cover (Built-In)
CCASADO F	30" Asado Carbon Fiber Vinyl Cover (Freestanding)
CCLPZA	30" Napoli Outdoor Oven Carbon Fiber Vinyl Cover (Countertop)
CCLPZAB	30" Napoli Outdoor Oven Carbon Fiber Vinyl Cover (Built-In)
CCLPZAF	30" Napoli Outdoor Oven Carbon Fiber Vinyl Cover (Freestanding)
CCSMK	30" Smoker Carbon Fiber Vinyl Cover (Countertop)
CCSMKB	30" Smoker Carbon Fiber Vinyl Cover (Built-In)
CCSMKM	30" Smoker Carbon Fiber Vinyl Cover (Mobile Kitchen Cart)
CCLSB1	Single Side Burner Carbon Fiber Vinyl Cover (Built-In)
CCLSB	Double Side Burner Carbon Fiber Vinyl Cover (Built-In)
CCLSB2PC	Double Side Burner with Prep Center Carbon Fiber Vinyl Cover
CCLPB	Power Burner Carbon Fiber Vinyl Cover
CCTWR	Beverage Dispenser / Single Tower Tap Head Carbon Fiber Vinyl Cover
CCTS	Trash Chute Carbon Fiber Vinyl Cover
CCMD	Patio Heater Dome Carbon Fiber Vinyl Cover / Fits Models LHPM and LHFS
CCLSK18	18" Sink Carbon Fiber Vinyl Cover (For Sink with Lynx Faucet LPPK)
CCLSK24	24" Sink Carbon Fiber Vinyl Cover (For Sink w/ Lynx Faucet LPPK)
CCLSK30	30" Sink or Cocktail Station Carbon Fiber Vinyl Cover (For sink/cocktail pro w/ faucet LPPK)

NOTE: For planning and installation details, including dimensions, specification sheets, and CAD drawings please visit the Support/Product Documents section of the Lynx website: lynxgrills.com



GRILLS

MODEL	W (Width)	H (Height)	D (Depth)
L27	26.00	10.88	22.00
L30	29.00	10.88	24.50
L36	35.00	10.13	22.00
L42	41.00	10.88	24.50
L54	53.00	10.88	24.50

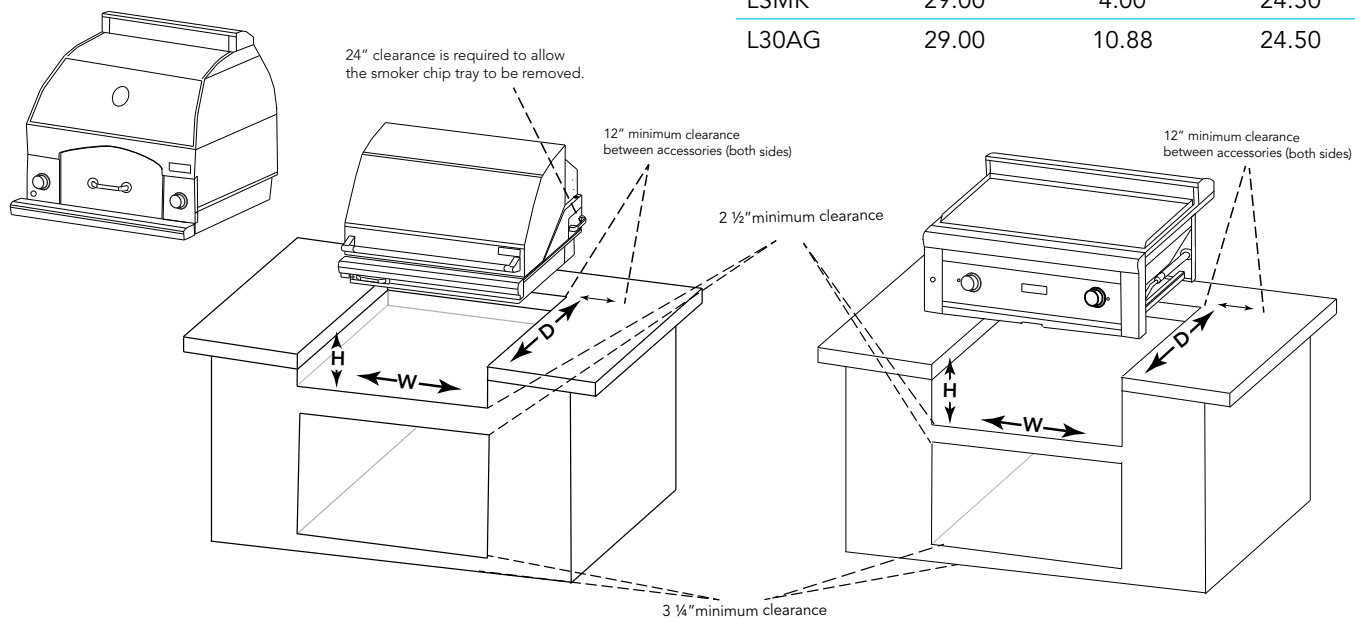


INSULATED JACKET

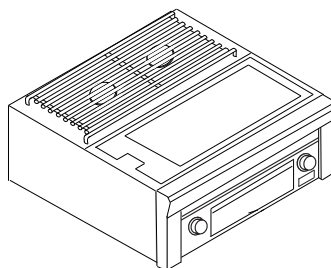
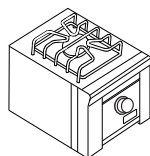
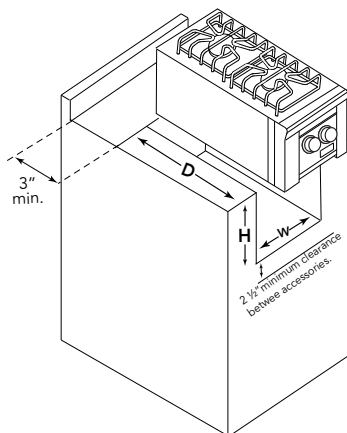
MODEL	W (Width)	H (Height)	D (Depth)
LIJ27	33.00	11.63	24.00
LIJ30	36.00	11.63	26.50
LIJ36	42.00	11.63	24.00
LIJ42	48.00	11.63	25.50
LIJ54	60.00	11.63	26.50

PIZZA OVEN/SMOKER/ASADO

MODEL	W (Width)	H (Height)	D (Depth)
LPZA	29.00	4.00	24.50
LSMK	29.00	4.00	24.50
L30AG	29.00	10.88	24.50

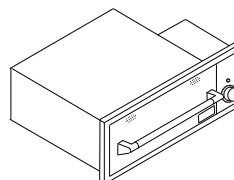
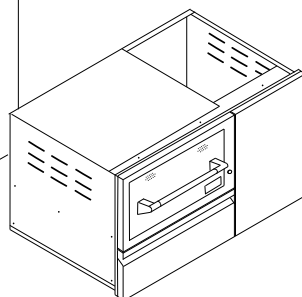
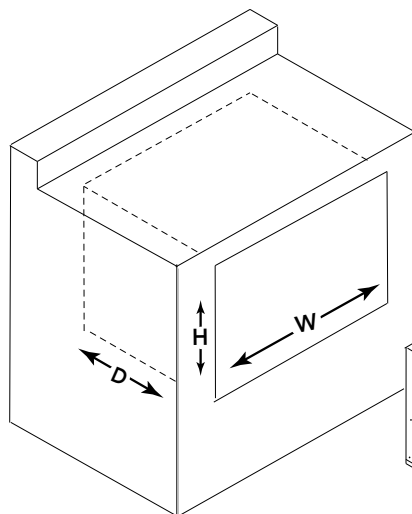


SIDE BURNERS



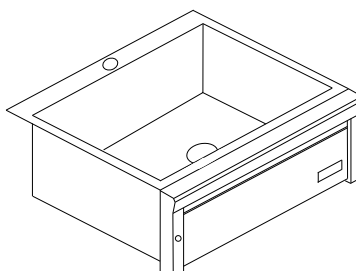
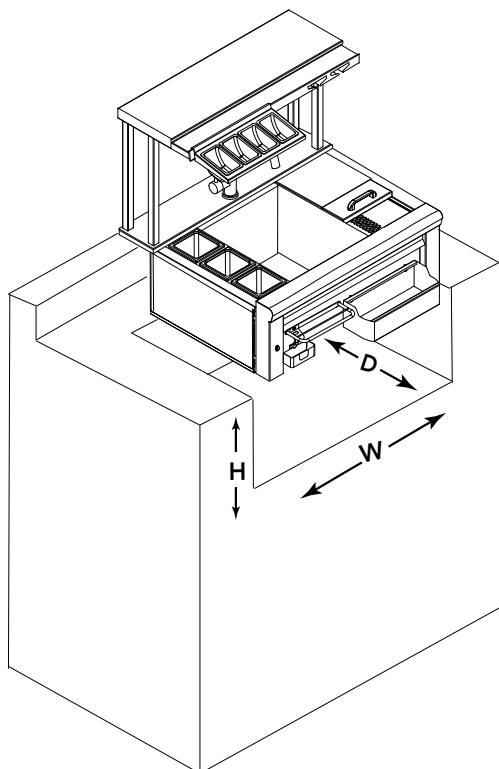
MODEL	W (Width)	H (Height)	D (Depth)
LSB1-3	12.13	10.63	12.50
LSB2-2	12.13	10.63	24.50
LSB2PC-1	24.25	10.63	24.50
LPB	19.00	10.63	22.00

WARMING DRAWERS



MODEL	W (Width)	H (Height)	D (Depth)
L30WD-1	28.50	10.00	20.50
L42CC-1	40.25	19.38	24.50

COCKTAIL PRO/SINKS

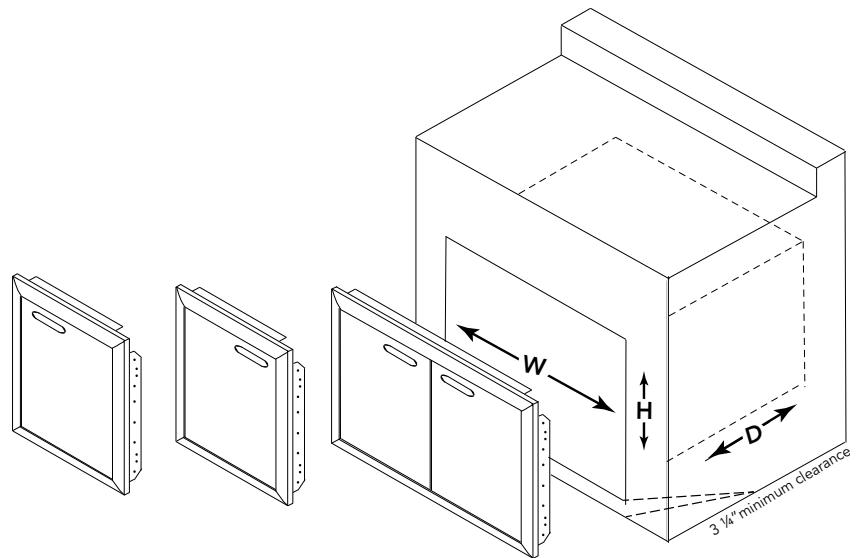


MODEL	W (Width)	H (Height)	D (Depth)
LCS30	29.00	10.50	22.00
LSK18	17.00	10.50	22.00
LSK24	23.00	10.50	22.00
LSK30	29.00	10.50	22.00

*Not to be used for installation
 *Subject to change without notice
 * Refer to product instructions

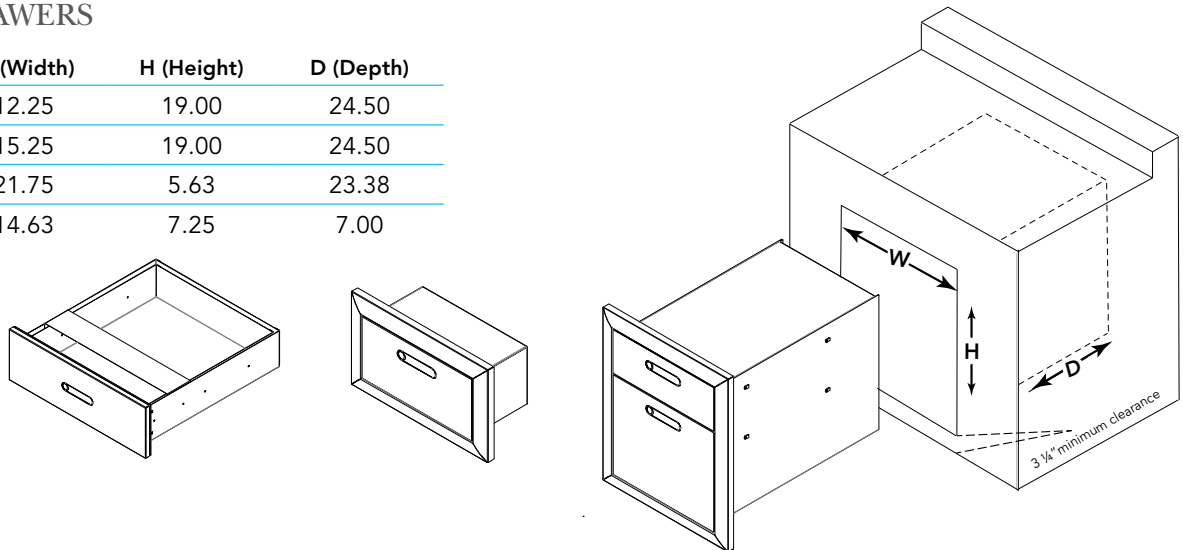
ACCESS DOORS

MODEL	W (Width)	H (Height)
LDR18/LR-4	13.38	19.00
LDR24L/R-4	19.25	19.00
LDR30T-4	25.13	19.00
LDR36T-4	31.50	19.00
LDR42T-4	37.50	19.00



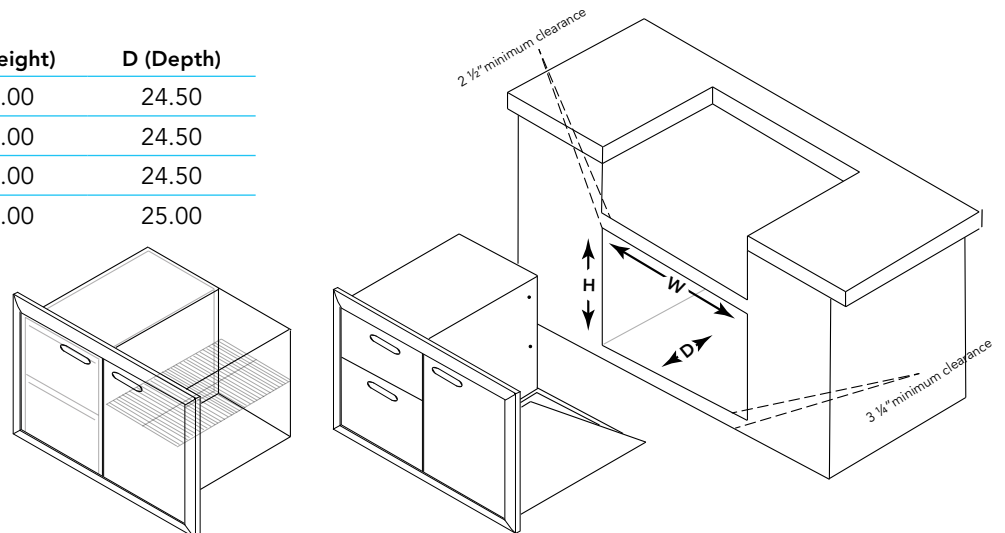
UTILITY DRAWERS

MODEL	W (Width)	H (Height)	D (Depth)
LDW16-4	12.25	19.00	24.50
LDW19-4	15.25	19.00	24.50
LMD-4	21.75	5.63	23.38
LTWL	14.63	7.25	7.00



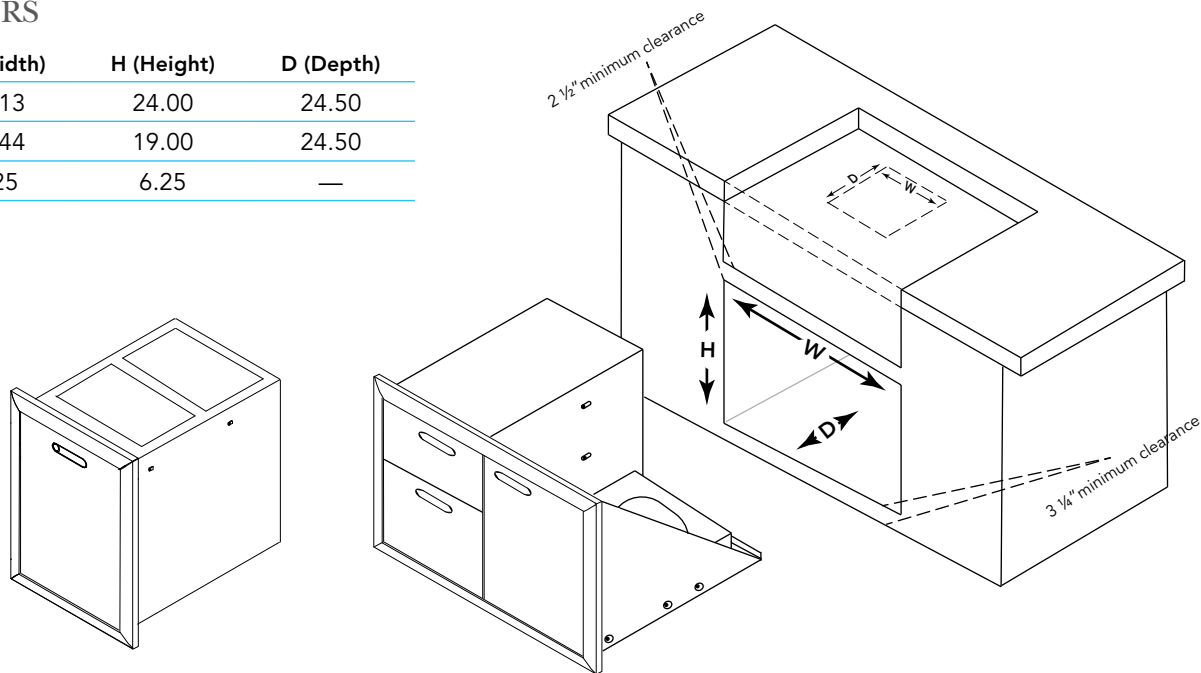
STORAGE SYSTEMS

MODEL	W (Width)	H (Height)	D (Depth)
LSA30-4	25.44	19.00	24.50
LSA36-4	31.44	19.00	24.50
LSA42-4	37.44	19.00	24.50
LPA36-4	31.50	19.00	25.00



TRASH CENTERS

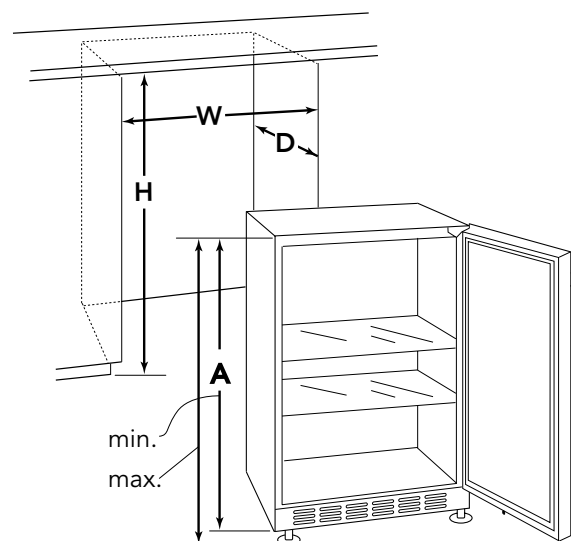
MODEL	W (Width)	H (Height)	D (Depth)
L20TR-4	16.13	24.00	24.50
LTA30-4	25.44	19.00	24.50
L18TS	8.25	6.25	—



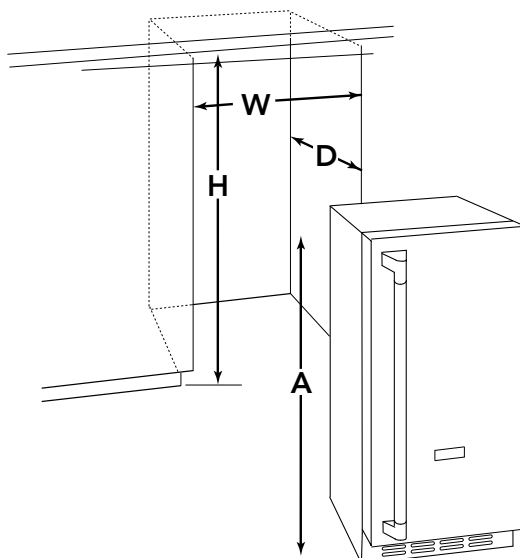
OUTDOOR ICE AND REFRIGERATOR

MODEL	W (Width)	H (Height)	D (Depth)	A (Adj. Height)
LM15REF	15.00	34.00-35.00	24.00	33.75-34.75
LM24REF	24.00	34.00-35.00	24.00	33.75-34.75
LM24REFC	24.00	34.00-35.00	24.00	33.75-34.75
LM24BF	24.00	34.00-35.00	24.00	33.75-34.75
LM24DWR	24.25	34.00-35.00	24.00	33.75-34.75
LM15WINE	15.00	34.00-35.00	24.00	33.75-34.75
L15ICE	15.00	34.00-35.00	24.00	33.50

OUTDOOR REFRIGERATORS



ICE MACHINE



**Not to be used for installation*
**Subject to change without notice*
**Refer to product instructions*



I. LIMITED LIFETIME WARRANTY

The stainless steel grill body, brass grill burners, cooking grates, ProSear2 burner and rotisserie infrared burner are warranted to be free from defects in material and workmanship when subjected to normal domestic use and maintenance for the lifetime of the original purchaser. This warranty excludes surface corrosion, scratches, and discoloration which may occur during normal use. This warranty is limited to the replacement of the defective parts, with the owner paying a processing fee and all other costs including labor. Failure to perform required maintenance will void this warranty.

II. LIMITED FIVE-YEAR WARRANTY

The following grill parts are warranted to be free from defects in material and workmanship, when subjected to normal domestic use and maintenance, for a period of five (5) years from the original date of purchase; warming racks, spit rods, briquette trays, manifolds and gas valves. This warranty is limited to the replacement of the defective parts, with the owner paying a processing fee and all other costs including labor.

III. LIMITED TWO-YEAR WARRANTY

All other grill components are warranted to be free from defects in material and workmanship, when subjected to normal domestic use and maintenance, for a period of two (2) years from the original date of purchase. This warranty is limited to the replacement of the defective parts, with the consumer paying all labor costs.

IV. LIMITED ONE-YEAR WARRANTY

For a period of one (1) year from the original date of purchase, Lynx will replace or repair parts found to be defective at no cost to the original purchaser. This includes the cost of shipping replacement parts and, where necessary, service labor at prevailing local rates by a Lynx authorized service person. Service will be provided during normal business hours and must be authorized in advance by Lynx.

V. LIMITATIONS & EXCLUSIONS

- 1) This Warranty shall apply to products purchased and located in the United States and Canada. Products must be purchased in the country where service is requested.
- 2) Warranty applies only to the original purchaser and may not be transferred.
- 3) Warranty is in lieu of all other warranties expressed or implied and all other obligations or liabilities related to the sale or use of Lynx products.
- 4) Warranty **shall not apply** and Lynx is not responsible for damage resulting from misuse, abuse, failure to provide reasonable and necessary required maintenance, natural disaster, animals, alteration of or tampering with the appliance, accident, hostile environment,

flare-up fires, improper installation or operation, or an installation not in accordance with the instructions contained in this manual, or the local codes.

- 5) Lynx shall not be liable for incidental, consequential, special or contingent damages resulting from its breach of this written warranty or any implied warranty.
- 6) Some states do not allow limitations on how long an implied warranty lasts, or the exclusions of or limitations on consequential damages. This warranty gives you specific legal rights and you may have other rights which vary from state to state.
- 7) No one has the authority to add to or vary Lynx's warranty, or to create for Lynx any other obligation or liability in connection with the sale or use of its products.
- 8) Limited to the replacement of defective parts with the owner paying all other costs including labor.

VI. WHAT IS NOT COVERED: LYNX SHALL NOT BE RESPONSIBLE FOR AND SHALL NOT PAY FOR THE FOLLOWING

- 1) Installation or start-up, damages or problems caused by improper installation or use.
- 2) Service by an unauthorized service provider.
- 3) Damage or repair due to service by an unauthorized service provider or use of unauthorized parts.
- 4) Warranty does not apply to products installed in any commercial or non-residential application. Examples of excluded applications include, but are not limited to day care centers, schools, bed and breakfast centers, churches, private clubs, fire stations, club houses, common areas in multi-family dwellings, restaurants, hotels, nursing homes, food service locations and institutional food service locations. *Contact Lynx for Common Area Warranty.
- 5) To correct normal adjustments or settings, due to improper installation, commissioning or local gas supply properties.
- 6) Shipping and handling costs, export duties, installation, removal, or re-installation cost (RMA excluded).
- 7) Display models are sold "as is". If you have purchased a display model, please be advised that it is sold "as is" and that it is subject to the following warranty exclusions: any exterior or cosmetic damage is nonwarrantable; any missing components will be replaced at consumers expense; major handling damage to manifold, valve and ignition system will be serviced at consumer's expense; all other warranties will remain in effect.
- 8) The cost of a service call to diagnose complaint.
- 9) Modification to Lynx product will void related warranties

* Please refer to Accessory Care & Use for respective warranties.

HOW TO OBTAIN SERVICE FROM LYNX

Before calling for service, please make sure you have the following information:

- Model Number
- Date of Purchase
- Proof of Purchase by the original owner
- Serial Number

Serial number can be located on the rating plate, which is located either on the underside of the drip tray or on the heat shield behind the front panel

For warranty service, contact the Lynx Customer Service Department for an authorized service agent near you at:
888.289.5969 or service@lynxgrills.com

Your satisfaction is of the utmost importance to us. If a problem cannot be resolved to your satisfaction, please write, fax, or email us:

Lynx Grills, Inc.
7300 Flores Street
Downey, CA 90242
Service: 888.289.5969
Tel: 888-289-5969 • Fax: 562-299-6978
www.lynxgrills.com
Contact Lynx for replacement parts.
Parts are shipped F.O.B. Downey, CA



PRODUCTS PERFORMANCE DESIGN SERVICE DEALERS RECIPES SUPPORT & RESOURCES



There's so much more online! Visit Lynxgrills.com and check out our complimentary design service, full library of product information and documents, videos, and photos.

PRODUCT REGISTRATION ONLINE

Go to www.lynxgrills.com/support/registration to register your new professional Lynx Grill warranty. The information you provide will not be shared with third parties or individuals without your consent.

FIND US ON



Facebook



YouTube



Instagram



Houzz



Twitter



EVERYTHING FOR THE OUTDOOR KITCHEN

The best outdoor kitchen products come from:
Lynx Grills, Inc., 7300 Flores Street, Downey, CA 90242
For more information, please call **1.888.289.5969**
or visit **www.lynxgrills.com**

P/N 36047 03/01/2017 ©Lynx Grills, Inc.

