



Pulsar Plus

Smart EV charging
made simple

PULSAR PLUS

Smart and powerful EV charging

Wallbox Pulsar Plus offers the best of both small size and powerful performance. Designed for easy installation, **Pulsar Plus can charge any electric car on the market today** and is future-ready to handle tomorrow's more powerful EVs. Managing charging is simple and efficient with the integrated **myWallbox app**, allowing you to control your charger and your charging from any mobile device over **Wi-Fi or Bluetooth**.



PULSAR MAX

Smart EV charging for the home, office, and everywhere in between

- ✓ **Compact design, powerful performance**
240V, Level 2 charging in an incredibly small package. Adjustable capacity from 6A to 40A or 48A depending on model. Add up to 30-35 miles of range per hour.
- ✓ **Connected and Smart**
Wi-Fi and Bluetooth connectivity allow you multiple ways to connect and control your charger from smart devices.
- ✓ **Onboard Intelligence**
Pulsar Plus lets you manage your schedule and smart functions even when you can't connect to the Internet.
- ✓ **Built-in Energy Management Software**
Do more than charge your EV. Onboard energy management solutions let you connect your EV charging to your home grid and solar.
- ✓ **Power Sharing**
Connect two or more Pulsar Plus chargers (up to 25) on a single circuit and dynamically charge multiple EVs at the same time.
- ✓ **Safe and Reliable**
UL listed for electrical safety, NEMA Type 4 rated watertight, backed by a 3-year warranty.



PULSAR PLUS

Energy management software

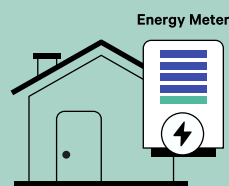
Smart EV charging is just the beginning

Pulsar Plus is more than just an EV charger. When paired with a smart meter (available from wallbox.com and official partners and resellers), you can access the built-in Energy Management Solutions software that lets Pulsar Plus do more than just charge your EV.

Power Boost

Dynamic Load Balancing

Your home and EV in harmony. Access the full power of your Pulsar Plus. With Power Boost, you can install a more powerful Pulsar Plus—up to 48A—even in older homes. As household appliances are turned on or off, Power Boost automatically balances the available power to your connected EV, keeping your overall energy use within safe limits while ensuring the fastest possible charge for your EV.

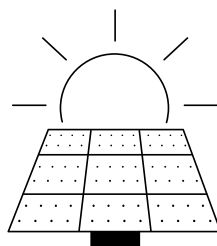


Eco-Smart

Solar EV charging

Go green with solar EV charging. In buildings and homes with solar PV, Eco-Smart lets you choose which source of energy you use for EV charging.

Full Green Mode uses 100% available green energy to charge your EV. **Eco Mode** blends grid with available green energy for faster EV charging.



PULSAR PLUS

myWallbox

One platform, multiple ways to access your charger

With Wi-Fi and Bluetooth connectivity built-in, you can use the myWallbox platform to connect and control your charger and your charging.



- Manage and monitor the status of your EV charging from anywhere
- Set and manage charge schedules
- Remote charger locking and unlocking
- Manage multiple users and multiple chargers
- Real-time charging statistics
- Real-time notifications

PULSAR PLUS

Product Details

General specifications

Dimensions: 7.8" x 7.9" x 3.9"
(without cable)
Weight: 4.4 lbs
(without cable)
Cable length: 25 ft
Connectivity: Wi-Fi / Bluetooth
User interface: myWallbox app & portal
Voice control: Amazon Alexa / Google Assistant

Electrical specifications

Rated current/
charging power: 40A / 9.6kW
48A / 11.5kW
Configurable current: 6A to max rated current
Electrical Safety: UL 2594, UL 2231
Certification
EMC Compliance: FCC Part 15 Class B
Environmental rating: NEMA Type 4 per UL 50E





www.wallbox.com

Copyright 2022, Wallbox Chargers S.L.

wallbox 