

QUICK SETUP GUIDE

2.5" SATA to USB-C® HDD Enclosure

NS-PC25HDE / NS-PC25HDE-C

PACKAGE CONTENTS

- 2.5" SATA hard drive enclosure
- USB-C cable
- USB adapter
- Foam pads (4)
- Quick Setup Guide

COMPATIBILITY

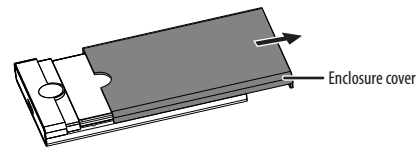
- **Supports 2.5" HDD/SSD:** 2 TB (Max.) .19 in. (5 mm) or .27 in. (7 mm) or .37 in. (9.5 mm) height

FEATURES

- Connects a 2.5" SATA SSD or HDD to your computer to back up files, transfer data and more*
 - Plug-and-play and tool-free design allows easy installation and assembly
 - USB-C cable and USB adapter included for wide-ranging use
 - LED indicators show the enclosure is powered and ready to use
 - Transfer speeds up to 6 Gbps give you fast access to your data
 - Works with USB 2.0 and 3.0 and is backwards compatible for long-lasting use
 - UASP support offers faster data speeds while reducing processor requirements
 - Designed for most 5, 7, and 9.5 mm SATA I, II and III drives
- *Does not work with IDE drives

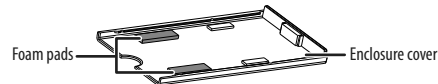
INSTALLING YOUR HARD DRIVE IN THE ENCLOSURE

- 1 Slide the enclosure cover open.



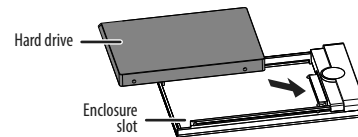
- 2 If your drive is:

- .37 in. (9.5 mm) high, don't install foam pads.
- .27 in. (7 mm) high, install two 3 mm foam pads to the back side of the enclosure cover.
- .19 in. (5 mm) high, install two 5 mm foam pads to the back side of the enclosure cover.

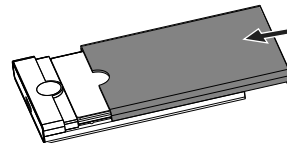


- 3 Insert the drive (not included) into the enclosure slot.

Note: Make sure that the connectors in the drive connect securely to the slots in the enclosure.



- 4 Slide the enclosure cover back onto the enclosure until it clicks into place.

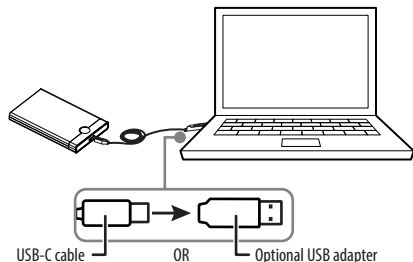


CONNECTING YOUR ENCLOSURE TO YOUR COMPUTER

CAUTION: Hard drives that have been used previously should already be formatted. If your hard drive or SSD is not new, and if you choose to format the hard drive, all data/information on the drive will be lost.

- 1 Connect the USB-C cable into the port on the enclosure.
- 2 Plug the other end of the cable into a USB port on your computer to access the drive.

Note: For laptops with no USB-C port, use the included USB-C to USB adapter to connect to an open USB port



- 3 If this is the first time you are using your drive, follow your computer's operating system instructions to format the hard drive.
- 4 Follow your computer's operating system instructions to transfer data to or from your computer.

TROUBLESHOOTING

Can't find the additional drive in my system

- Make sure that your drive is functioning. A drive that does not work in a laptop will not work with this enclosure either.
- Make sure that the USB cable is connected firmly to your enclosure and computer.
- Make sure that the USB cable is not damaged.
- Open the enclosure and make sure that all connections are secure.
- Try using a different USB port.
- If it is a new drive, it may need to be formatted. Do not format a drive that already has data on it.
- Do not use USB hubs without a separate power supply because they may not provide enough power.

Data transfer is slow

- Make sure that your computer's drivers are up-to-date.
- Try using a different USB port.
- Older drives may be slower due to physical limitations. This is normal.

SPECIFICATIONS

Dimensions: 5.1 × 3.2 × 0.6 in. (129.3 × 80.5 × 14.3 mm)

Connection types: USB-C

Cable length: 3.2 ft. (1 m)

Data transfer speed: 6 Gbps (MAX)

* Transfer speeds are limited by the drive's specifications and performance characteristics.

LEGAL NOTICES

FCC Information

This device complies with Part 15 of the FCC Rules. Operation is subject to the following two conditions:

(1) this device may not cause harmful interference, and (2) this device must accept any interference received, including interference that may cause undesired operation.

This equipment has been tested and found to comply with the limits for a Class B digital device, pursuant to part 15 of the FCC Rules. These limits are designed to provide reasonable protection against harmful interference in a residential installation. This equipment generates, uses, and can radiate radio frequency energy and, if not installed and used in accordance with the instructions, may cause harmful interference to radio communications. However, there is no guarantee that interference will not occur in a particular installation. If this equipment does cause harmful interference to radio or television reception, which can be determined by turning the equipment off and on, the user is encouraged to try to correct the interference by one or more of the following measures:

- Reorient or relocate the receiving antenna.
- Increase the separation between the equipment and receiver.
- Connect the equipment into an outlet on a circuit different from that to which the receiver is connected.
- Consult the dealer or an experienced radio/TV technician for help.

Changes or modifications not expressly approved by the party responsible for compliance could void the user's authority to operate the equipment.

ICES-003

This Class B digital apparatus complies with Canadian ICES-003;

Cet appareil numérique de la classe B est conforme à la norme NMB-003 du Canada.

ONE-YEAR LIMITED WARRANTY

Visit www.insigniaproducts.com for details.

CONTACT INSIGNIA:

1-877-467-4289 (U.S. and Canada)

www.insigniaproducts.com

INSIGNIA is a trademark of Best Buy and its affiliated companies
Distributed by Best Buy Purchasing, LLC
7601 Penn Ave South, Richfield, MN 55423 U.S.A.
©2022 Best Buy. All rights reserved.