



ARC-1280WX (White) ARC-1280MX (Black) OWNER'S MANUAL



Whynter Smart Portable Air Conditioner 13,000 BTU (10,000 BTU SACC)

NEX Inverter Dual Hose | Smart App & Remote Control

Congratulations on your new Whynter product!

To ensure proper operation, please read this Instruction Manual carefully before using this product. Keep this manual in a safe place for future reference.

V032026

Table of Contents

Table of Contents.....	2
Safety Compliance	3
Product Information.....	5
Technical Data.....	5
Parts & Accessories.....	6
Preparing to Install	7
Installation	8
Control Panel & Operation Instructions	11
Remote Control	13
Smart Control App	14
Care & Maintenance	14
Storage	16
Troubleshooting.....	17
Warranty.....	19



Read Safety Precautions Before Operation and Installation

Thank you for choosing Whynter. Please follow the instructions provided in this user manual to obtain the very best performance from your portable air conditioner. We trust that your Whynter portable air conditioner will provide the performance and reliability that we stand for.

Please keep this user manual in a safe place for future reference. This symbol on the product or its packaging indicates that this appliance cannot be treated as normal domestic trash, but must be handed in at a collection point for recycling electric and electronic appliances. Your contribution to the correct disposal of this product protects the environment. Further information about the recycling of this product can be obtained from your local municipal authority.

Supplier's Declaration of Conformity 47 CFR § 2.1077 Compliance Information

Unique Identifier: RG51F2(2)/CEFU1

Responsible Party - U.S. Contact Information

Brand: Whynter

Company Name: Whynter LLC.

Address: 3320 E Birch Street, Brea CA 92821

Internet contact information: <https://www.whynter.com>

FCC Compliance Statement

This device complies with Part 15 of the FCC Rules. Operation is subject to the following two conditions: (1) This device may not cause harmful interference, and (2) this device must accept any interference received, including interference that may cause undesired operation.

SAVE THESE INSTRUCTIONS
For continued safe use of your appliance.



The Safety Alert Symbol indicates potential hazards that could result in serious injury. All safety messages will follow the Safety Alert Symbol and either the words "DANGER" or "WARNING"

Read this manual carefully before installing or operating your new air conditioning unit. Make sure to save this manual for future reference. Your safety and the safety of others are very important to us. To reduce the risk of fire, electrical shock or injury when using the appliance, follow basic precautions, including the following:

Explanation of symbols displayed on the unit:



Risk of fire flammable materials



This symbol shows that a service personnel should be handling this equipment with reference to the installation manual.



This symbol shows that the operation manual should be read carefully.

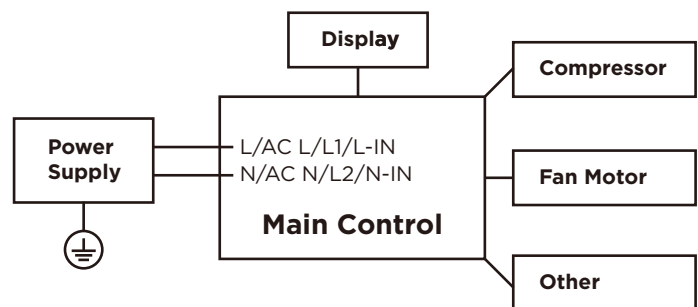


This symbol shows that information is available such as the operating manual or installation manual.

ELECTRONIC TYPE:



BEFORE PERFORMING ANY ELECTRICAL OR WIRING WORK, TURN OFF THE MAIN POWER TO THE SYSTEM.



WARNING

- The appliance shall be stored in a room without continuously operating ignition sources (for example: open flames, an operating gas appliance, or an operating electric heater).
- Do not pierce or burn the unit.
- Be aware that the refrigerants may not contain an odor.

SAFETY COMPLIANCE

- Keep ventilation openings clear of obstruction.
- The appliance shall be stored so as to prevent mechanical damage from occurring.
- A warning that the appliance shall be stored in a well-ventilated area where the room size corresponds to the room area as specified for operation.
- Any person who is involved with working on or breaking into a refrigerant circuit should hold a current valid certificate from an industry-accredited assessment authority, which authorizes their competence to handle refrigerants safely in accordance with an industry-recognized assessment specification.
- Servicing shall only be performed as recommended by the equipment manufacturer.

- Maintenance and repair requiring the assistance of other skilled personnel shall be carried out under the supervision of a person competent in the use of flammable refrigerants.
- Please follow the instructions carefully to handle, install, clear, and service the air conditioner to avoid any damage or hazard.
- Flammable Refrigerant R32 is used within the air conditioner.
- When maintaining or disposing of the air conditioner, the refrigerant (R32) shall be recovered properly and shall not discharge directly into the air.
- No open fire or device that may generate sparks/arcing shall be near the air conditioner to avoid causing ignition of the flammable refrigerant used.
- Please follow the instruction carefully to store or maintain the air conditioner to prevent mechanical damage from occurring.
- Flammable refrigerant R32 is used in the air conditioner. Please follow the instructions carefully to avoid any hazard.
- For specific information on the type of gas and the amount, please refer to the relevant label on the unit itself.



Read Safety Precautions Before Operation and Installation

To prevent death or injury to the user or other people and property damage, the following instructions must be followed. Incorrect operation due to ignoring instructions may cause death, harm, or damage.

CAUTION

- Installation must be performed according to the installation instructions. Improper installation can cause water leakage, electrical shock, or fire.
- Use only the included accessories and parts, and specified tools for the installation. Using non-standard parts can cause water leakage, electrical shock, fire, and injury or property damage. Make sure that the outlet you are using is grounded and has the appropriate voltage.
- The power cord is equipped with a three-prong grounding plug to protect against shock.
- Voltage information can be found on the nameplate of the unit.
- Your unit must be used in a properly grounded wall receptacle. If the wall receptacle you intend to use is not adequately grounded or protected by a time delay fuse or circuit breaker (the fuse or circuit breaker needed is determined by the maximum current of the unit. The maximum current is indicated on the nameplate located on the unit), have a qualified electrician install the proper receptacle.
- Install the unit on a flat, sturdy surface. Failure to do so could result in damage or excessive noise and vibration.
- The unit must be kept free from obstruction to ensure proper function and to mitigate safety hazards.
- Do not modify the length of the power cord or use an extension cord to power the unit.
- Do not share a single outlet with other electrical appliances. Improper power supply can cause fire or electrical shock.
- Do not install your air conditioner in a wet room such as a bathroom or laundry room. Too much exposure to water can cause electrical components to short circuit.
- Ensure there is a minimum of 36" clearance around the unit and that it is clear from any combustible items such as propane, fire extinguishers, fuel, etc.
- The exhaust hose should always be used and should never be covered or blocked, as this can become a fire hazard.
- The unit has wheels to facilitate moving. Make sure not to use the wheels on thick carpet or to roll over objects, as these could cause tipping.
- Do not operate a unit that has been dropped or damaged.
- Do not place the portable air conditioner close to any other heat-generating appliances.
- Do not touch the unit with wet or damp hands or when barefoot.
- If the air conditioner is knocked over during use, turn off the unit and unplug it from the main power supply immediately.
 - Visually inspect the unit to ensure there is no damage.
 - If you suspect the unit has been damaged, contact a technician or customer service for assistance.
- In a thunderstorm, the power must be cut off to avoid damage to the machine due to lightning.
- Your air conditioner should be used in such a way that it is protected from moisture (e.g., condensation, splashed water, etc.).
- Do not place or store your air conditioner where it can fall or be pulled into water or any other liquid. Unplug immediately if it occurs.
- All wiring must be performed strictly in accordance with the wiring diagram located inside the unit.
- The unit's circuit board (PCB) is designed with a fuse to provide over current protection. The specifications of the fuse are printed on the circuit board, such as: T 3.15A/250V, etc.
- When the water drainage function is not in use, keep the upper and the lower drain plug firmly plugged into the unit to prevent choking.
- This appliance is not intended for use by persons (including children) with reduced physical, sensory, or mental capabilities or lack of experience and knowledge, unless they have been given supervision or instruction concerning use of the appliance by a person responsible for their safety. Children should be supervised to ensure that they do not play with the appliance.
- Children must be supervised around the unit at all times.
- If the supply cord is damaged, it must be replaced by the manufacturer, its service agent, or similarly qualified persons in order to avoid a hazard.
- Prior to cleaning or other maintenance, the appliance must be disconnected from the supply mains.
- Never use this appliance if it is not working properly, or if it has been dropped or damaged.
- Do not remove any fixed covers. Never use this appliance if it is not working properly or if it has been dropped or damaged.
- Do not run cord under carpeting. Do not cover the cord with throw rugs, runners, or similar coverings. Do not route the cord under furniture or appliances. Arrange the cord away from traffic areas and where it will not be tripped over.
- Do not operate the unit with a damaged cord, plug, power fuse, or circuit breaker. Return to an authorized service facility for examination and/or repair.
- To reduce the risk of fire or electric shock, do not use this fan with any solid-state speed control device.
- The appliance shall be installed in accordance with national wiring regulations.
- Contact the manufacturer or authorized service technician for repair or maintenance information of this unit.
- Contact the manufacturer or authorized installer for installation questions of this unit.
- Do not cover or obstruct the inlet or outlet grilles.
- Do not use this product for functions other than those described in this instruction manual.
- Before cleaning, turn off the power and unplug the unit.
- Disconnect the power if strange sounds, smell, or smoke comes from the unit and contact the manufacturer or authorized service technician for assistance.
- Do not press the buttons on the control panel with anything other than your fingers.
- Contact Whynter Customer Support if this unit is not working properly or if it has been dropped or damaged.
- Do not operate or stop the unit by inserting or pulling out the power cord plug.
- Do not use hazardous chemicals to clean or come into contact with the unit. Do not use the unit in the presence of inflammable substances or vapor such as alcohol, insecticides, petrol, etc. Always transport your air conditioner in a vertical position and stand on a stable, level surface during use.
- Always contact Whynter Customer Support for replacement parts compatible with your unit. Hold the plug by the head of the power plug when taking it out.
- Turn off the product when not in use.

PRODUCT INFORMATION

INVERTER TECHNOLOGY

As pioneers in the air comfort space, we are introducing next-generation technology currently used only in high-efficiency ductless mini-split air conditioners. The Inverter technology will be featured in our NEX line of portable air conditioners. By utilizing this much more efficient technology, Whynter's Inverter variable-speed system allows the compressor to optimize efficiency and power consumption together while maintaining a specified output. This allows for a much quieter operation and significantly reduced energy consumption. Below are the advantages of inverter technology:

- Up to 40-50% more energy efficiency
- Quicker to achieve desired temperature
- Quieter operation
- No temperature fluctuations
- No voltage peaks from the compressor

PROPER SIZING AND CALCULATION

- Calculate Square Footage: Determine the room's area by multiplying the length by the width.
- Match BTU Ratings: Use the British Thermal Unit (BTU) rating to identify how much heat a unit can remove; higher numbers indicate more power for larger spaces.
- Avoid Sizing Errors: An undersized unit will not cool the room adequately, while an oversized unit fails to remove enough humidity, resulting in a damp environment.

TECHNICAL DATA

SPECIFICATIONS

OPERATIONAL MODES	AUTO, COOL, DRY, AND FAN
COOLING CAPACITY	13000 BTU 10000 SACC
COVERAGE AREA	500 SQ. FT.
FAN SPEED	CONTINUOUS/AUTO/LOW/MEDIUM/HIGH
NOISE LEVEL (DBA)	50/53/56
TEMPERATURE RANGE	60°F-86°F (16°C-30°C)
TIMER	UP TO 24 HOURS
REFRIGERANT	R32
POWER CONSUMPTION	1212W
AMPS	11.9
POWER SUPPLY	115V~/60HZ
CEER/EER	12.1 / 9.89
NET WEIGHT	55.34 LBS
UNIT DIMENSIONS	17.36" W X 15.63" D X 28.62" H

AMBIENT TEMPERATURE RANGE FOR UNIT OPERATING MODE TEMPERATURE RANGE

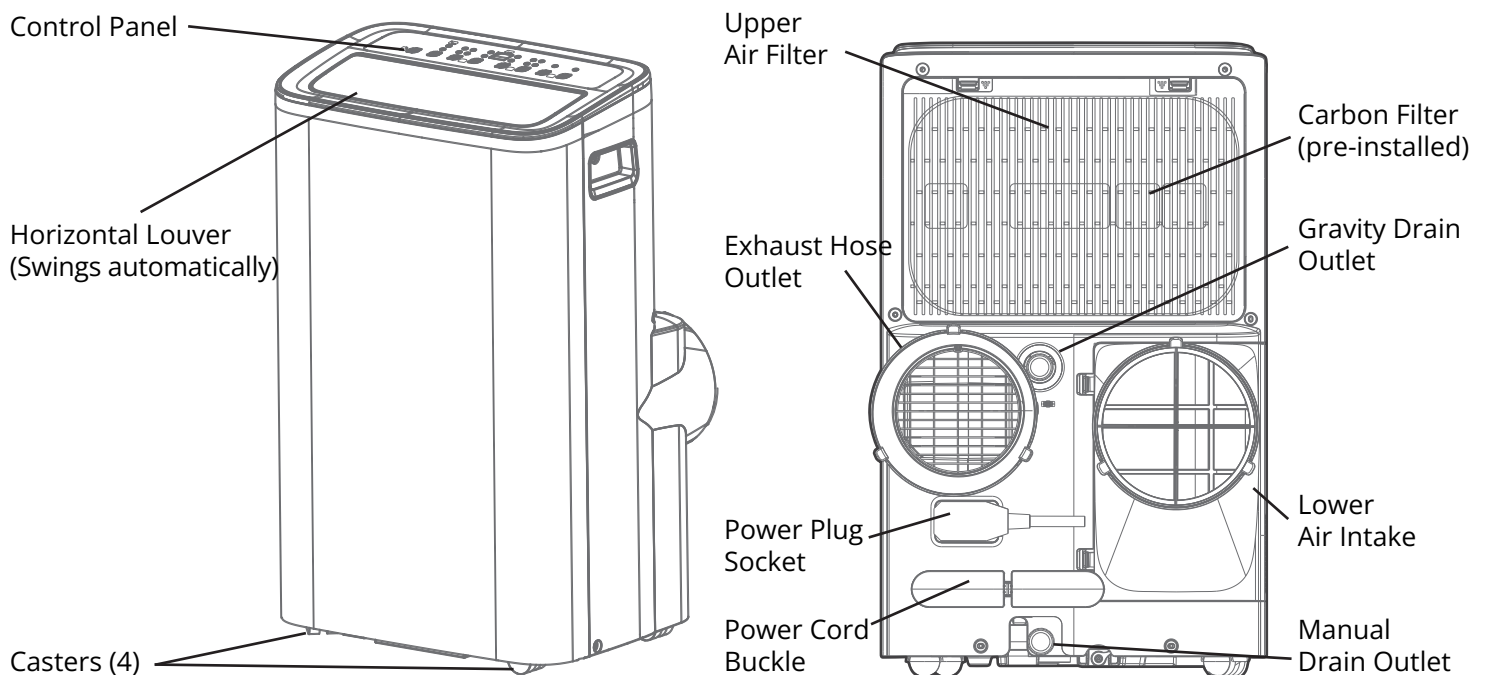
COOL MODE	60-95°F (16-35°C)
DRY MODE	55-95°F (13-35°C)

PARTS & ACCESSORIES

	Unit Adapter (AA)	1 piece		Window Slider A (GG)	1 piece
	Exhaust/Intake Hose (BB)	2 pieces		Window Slider B (KK)	1 piece
	Window Slider Adapter (CC)	2 pieces		Window Slider C (HH)	1 piece
	Gravity Drain Hose	1 piece		Security Bracket and 2 Screws (JJ)	1 set
	Foam Seal A Adhesive (DD)	4 pieces		Bolt (II)	2 pieces
	Foam Seal B Adhesive (EE)	2 pieces		Remote Control	1 piece
	Foam Seal C Non-Adhesive (EE)	2 pieces		Round Air Intake Filter	1 piece
	Power Buckle	1 piece		Washable Upper Air Filter	1 piece
				Carbon Filter (pre-installed)	1 piece

PREPARING TO INSTALL

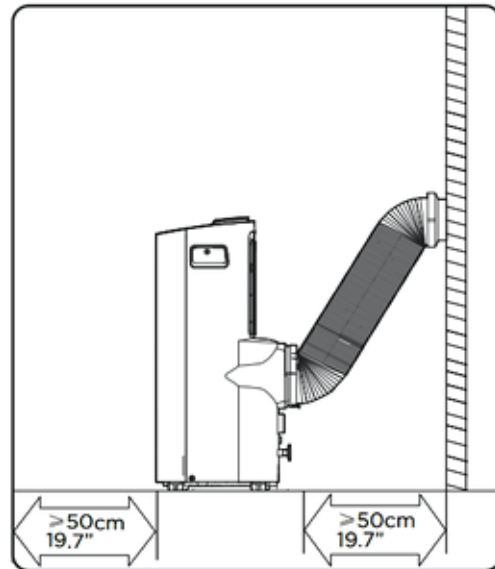
All illustrations in the manual are for explanation purposes only. Your machine may differ slightly. The unit can be controlled either via the unit's control panel or with the remote controller. To ensure optimal performance, the design specifications of both the unit and remote control are subject to change without prior notice.



INSTALLATION LOCATION CHECK

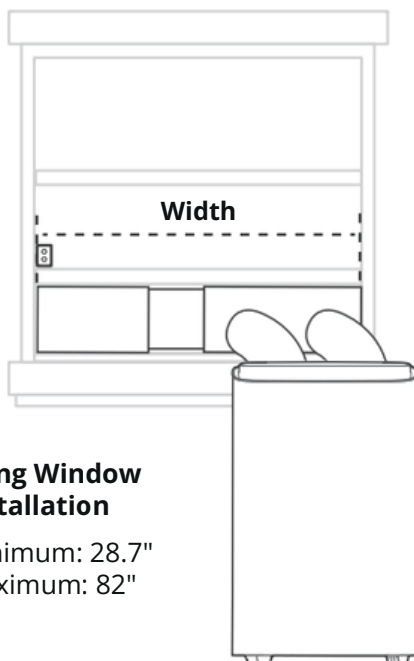
Your installation location should meet the following requirements:

- Make sure that you install your unit on an even surface to minimize noise and vibration.
- The unit must be installed near a grounded plug, and the manual drain outlet (found on the back of the unit) must be accessible.
- The unit should be located at least 30cm (12") from the nearest wall to ensure proper air conditioning.
- The exhaust outlet of the unit should be at least 50cm (19.7") away from obstacles.
- DO NOT cover the Intakes, Outlets or Remote Signal Receptor of the unit, as this could cause damage to the unit. The equipment manufacturer.



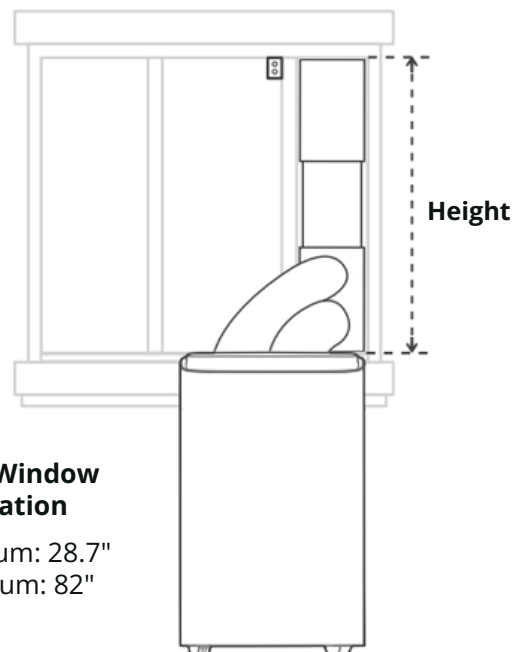
WINDOW KIT PLACEMENT CHECK

ENSURE A SECURE INSTALLATION BY VERIFYING YOUR WINDOW DIMENSIONS BEFORE SETUP. THE INCLUDED WINDOW KIT IS ADJUSTABLE, EXPANDING FROM 28.7" TO 82" TO ACCOMMODATE VARIOUS WINDOW SIZES.



Hung Window Installation

Minimum: 28.7"
Maximum: 82"



Hung Window Installation

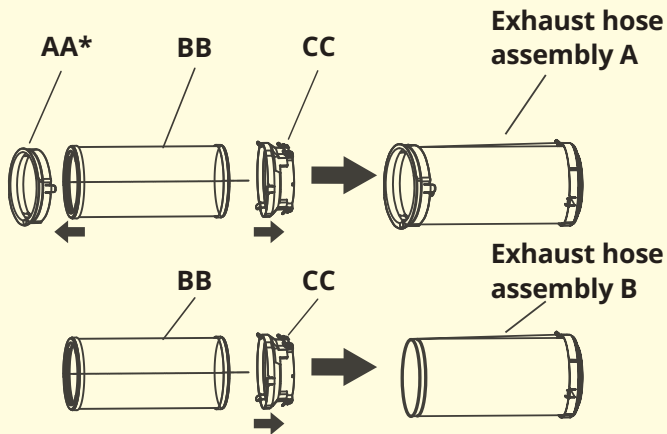
Minimum: 28.7"
Maximum: 82"

Note; See page 6 for part information

1

EXHAUST AND INTAKE HOSE ASSEMBLY INSTALLATION

Press the exhaust/ intake hose (BB) into the window slider adapter (CC). Connect the unit adapter (AA) to the exhaust hose, and automatically clamp using the elastic buckles of the adapters. Set aside until the window slider kit is installed.

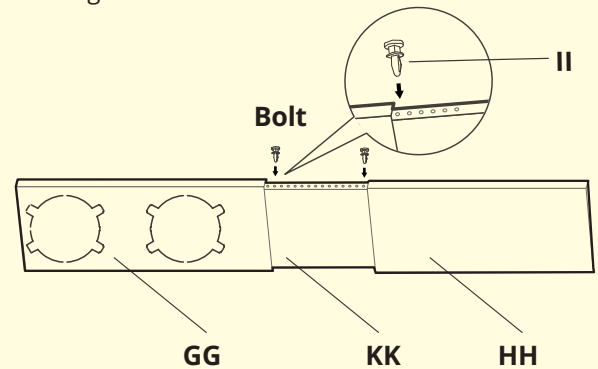


NOTE:
Please install the exhaust hose assembly according to the fittings in your kit.

2

PREPARING THE ADJUSTABLE WINDOW SLIDER

1. Select the window slider that best fits the size of your window. If necessary, carefully trim the slider using a handsaw to match the window opening. Measure accurately before cutting to ensure a proper fit.
2. Use bolts (II) to fasten the window sliders (GG, HH and KK) once they are adjusted to the proper length.



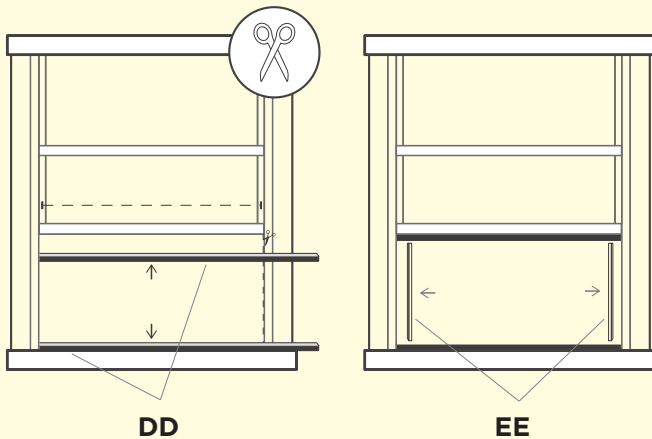
NOTE:
Please base your window slider installation on the accessories in your kit and the width of your window

3

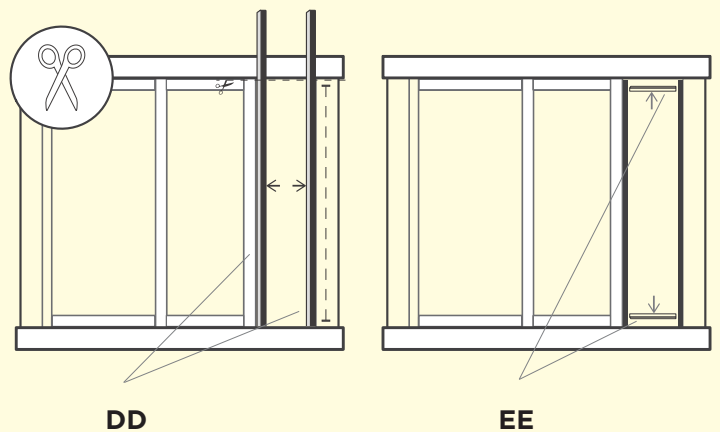
COMPLETE SEALING OF WINDOW

Cut the adhesive foam seal A (DD) and B (EE) strips to the proper lengths, and attach them to the window sash and frame as shown below.

HUNG WINDOW INSTALLATION



SLIDING WINDOW INSTALLATION

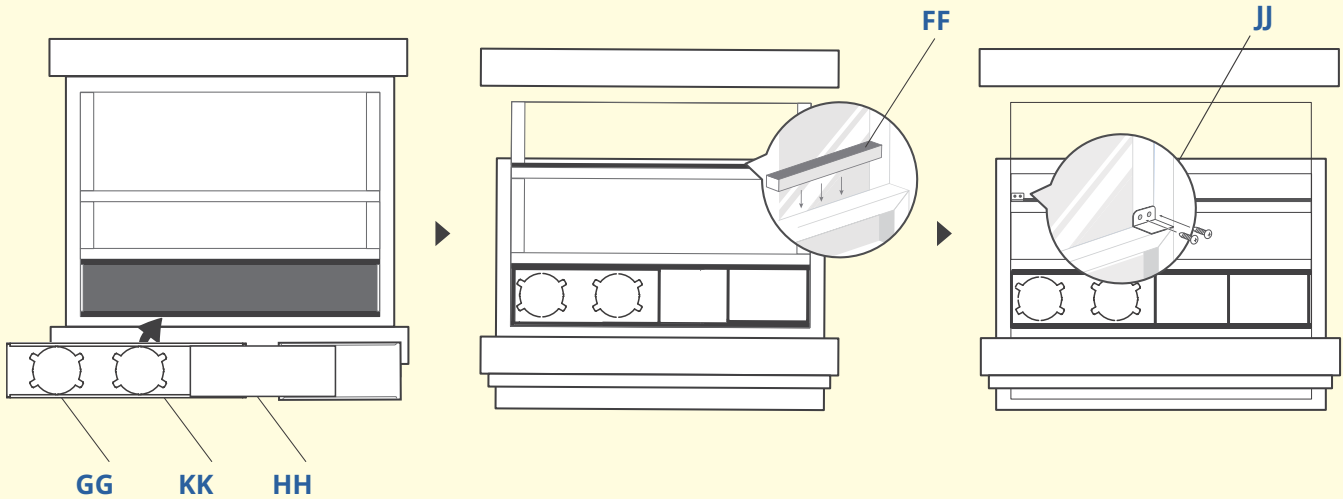


Note; See page 6 for part information

4

4.1 HUNG WINDOW INSTALLATION

Cut the adhesive foam seal A (DD) and B (EE) strips to the proper lengths, and attach them to the window sash and frame as shown below.



Step 1

Insert the window slider (GG, HH and KK) assembly into the window opening

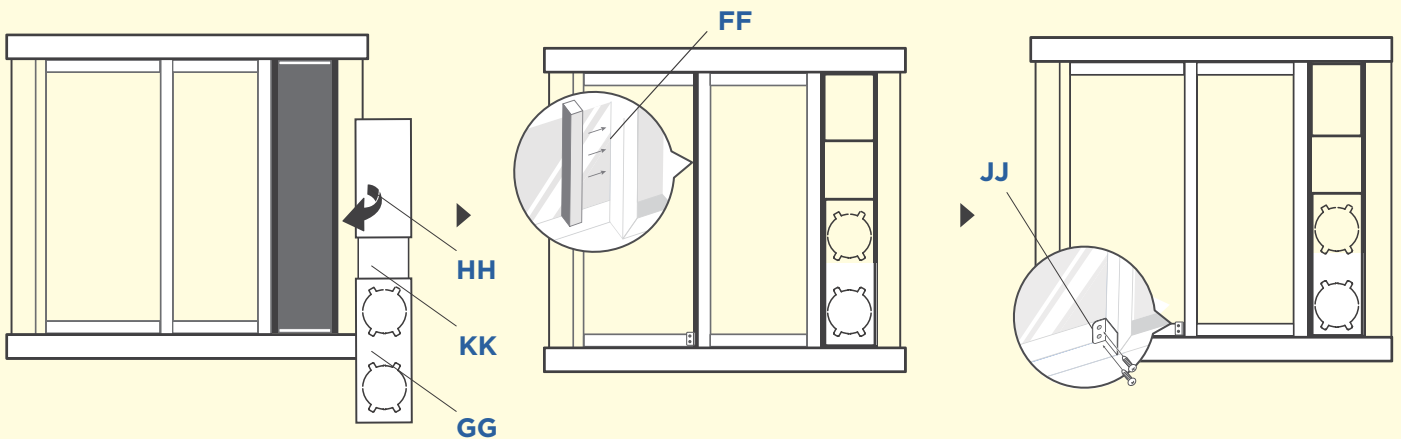
Step 2

Cut the non-adhesive foam seal C (FF) strip to match the width of the window. Insert the seal between the glass and the window frame to prevent air and insects from getting into the room.

Step 3

If desired, install the security bracket (JJ) with 2 screws as shown.

4.2 SLIDING WINDOW INSTALLATION



Step 1

Insert the window slider (GG, HH and KK) assembly into the window opening.

Step 2

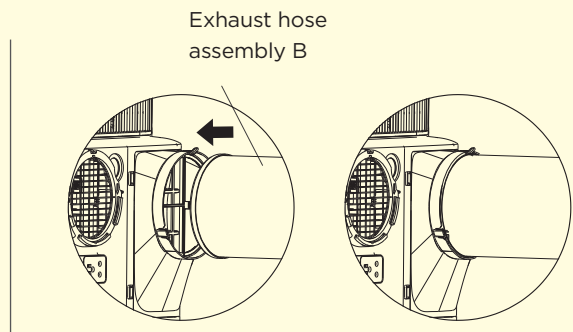
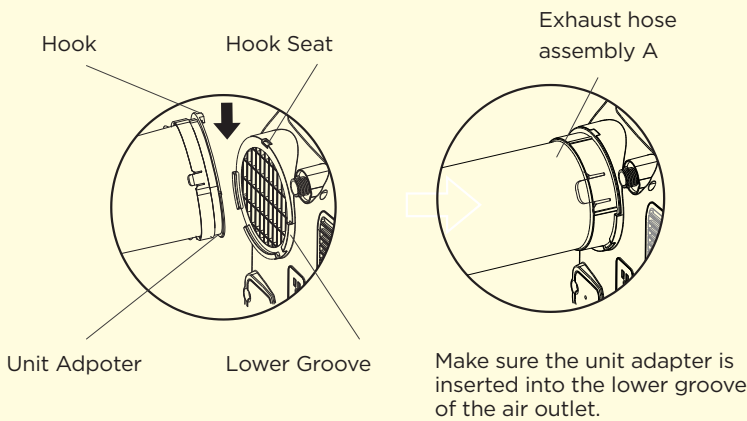
Cut the non-adhesive foam seal C (FF) strip to match the height of the window. Insert the seal between the glass and the window frame to prevent air and insects from getting into the room.

Step 3

If desired, install the security bracket (JJ) with 2 screws as shown.

Note; See page 6 for part information

5 INSTALL THE EXHAUST AND INTAKE HOSE ASSEMBLY TO THE UNIT

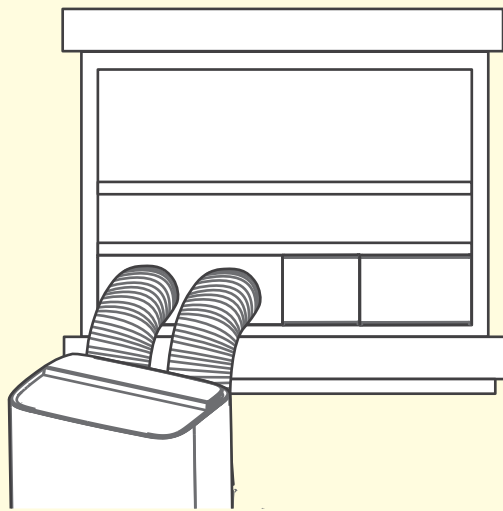


EXHAUST HOSE: Slide the exhaust hose into the exhaust air outlet opening of the unit along the lower groove making sure to catch the hook into the hook seat.

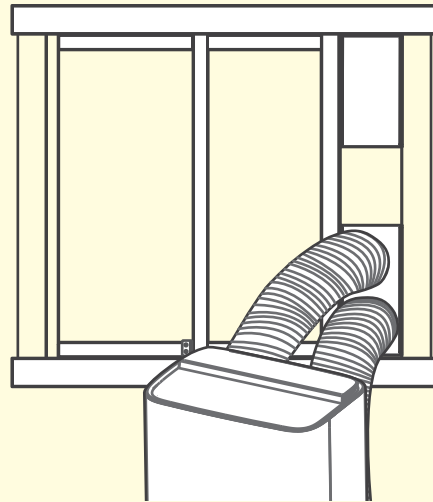
INTAKE HOSE: Push the intake hose into the air outlet opening of the unit along the arrow direction.

6 CONNECT THE ADAPTER TO THE WINDOW SLIDER

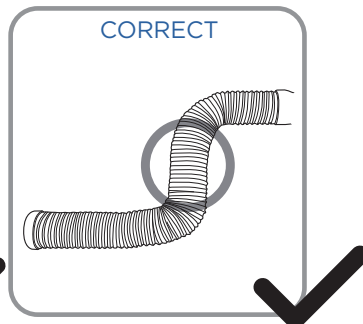
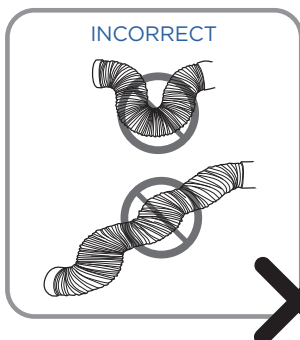
Insert the window slider adapters connected to the exhaust and intake hoses into the window slider holes.



HUNG WINDOW INSTALLATION

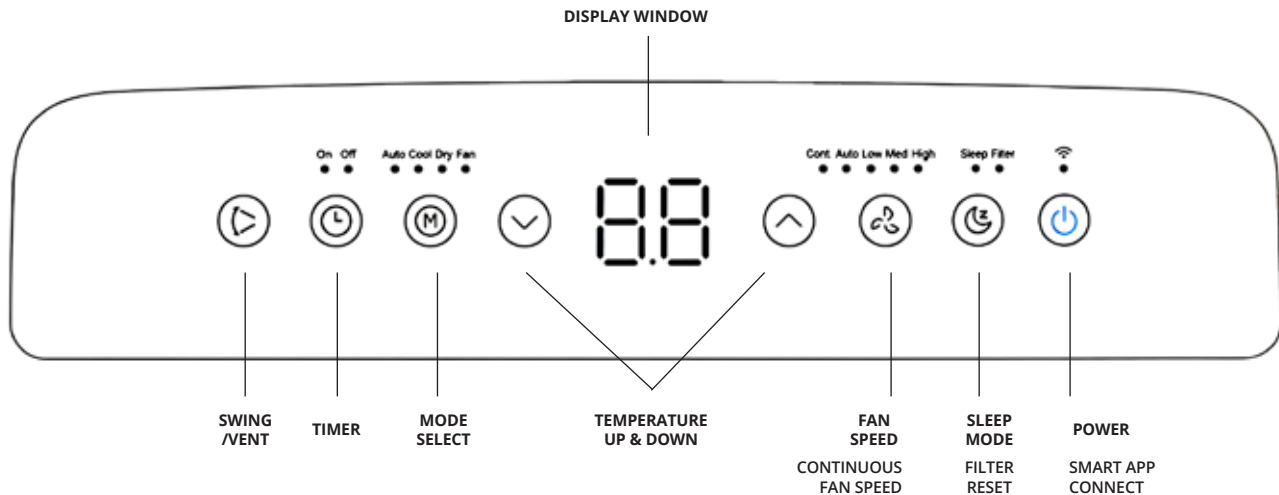


SLIDING WINDOW INSTALLATION



NOTE:
 To ensure proper operation, **DO NOT** overextend or bend the exhaust hose. Make sure there are no obstructions within 20" of the air vents so the exhaust system can function properly. All illustrations in this manual are provided for reference only. Your air conditioner may vary slightly in appearance. The actual product configuration and shape will prevail.

CONTROL PANEL & OPERATING INSTRUCTIONS



1. POWER / SMART APP WIRELESS CONNECTION (PRESS POWER BUTTON FOR 3 SECONDS)

- Press the POWER button to turn the unit on or off.

1.1 SMART APP WIRELESS CONNECTION

- To activate wireless connection mode, press and hold the POWER button for 3 seconds until "AP" appears on the LED display.
- If the unit successfully connects to your router within 8 minutes, wireless mode will automatically exit, and the wireless indicator light will illuminate. If the connection is not completed within 8 minutes, the unit will automatically exit wireless mode.

2. MODE BUTTON

- Select the operating mode in the sequence: AUTO, COOL, DRY, and FAN. The appropriate LED indicator light will light to show which mode is active.

AUTO MODE

- When you set the air conditioner to AUTO mode, it will automatically select cooling, or fan-only operation depending on what temperature is selected and the room temperature.
- The air conditioner will control the room temperature automatically at the temperature point set by you.
- When in AUTO mode, you can not select the fan speed.

NOTE: When in AUTO mode, both the AUTO mode and the actual operation mode indicator lights illuminate for some models.

COOL MODE

- When in COOL mode, Press the UP and DOWN buttons to select your desired room temperature. The temperature can be set within a range of 60°F-86°F/16°C-30°C
- Press the FAN button to choose the fan speed.

DRY MODE

- Press the MODE button until the DRY indicator light comes on. When in Dry mode, the fan speed and the temperature cannot be adjusted. The fan motor operates at AUTO speed.

FAN MODE

- When in FAN mode, press the FAN button to choose the fan speed. The temperature can not be adjusted.
- The exhaust hose is not required in FAN mode.

3. UP AND DOWN BUTTONS

- Press to adjust (increasing/decreasing) temperature settings in 1°F/1°C increments
- Press to adjust Timer setting in a range of 0-24hrs.
- The control is capable of displaying temperature in degrees Fahrenheit or degrees Celsius. To convert from one to the other, press and hold the Up and Down buttons at the same time for 3 seconds.

4. DISPLAY WINDOW

- Shows the temperature in °C or °F and the Auto-timer settings.

5. TIMER BUTTON

- Press to initiate the AUTO ON start time and AUTO OFF stop time program, in conjunction with the UP & DOWN buttons. The timer on/off indicator light illuminates when the timer is set.

6. SWING/VENT BUTTON

- Press to initiate the swing feature. Press SWING button once to start the louver moving, and press again to stop the louver in the desired direction.

7. FAN SPEED/CONTINUOUS FAN SPEED OVERRIDE (PRESS FAN SPEED BUTTON FOR 3 SECONDS)

Press the FAN SPEED button to cycle through the four fan settings: LOW, MED, HIGH, and AUTO. The corresponding indicator light will illuminate to show the selected setting.

- LOW / MED / HIGH: The fan operates at a constant selected speed.
- AUTO: The unit automatically adjusts the fan speed based on the room temperature and the set temperature to maintain comfort.

7.1 CONTINUOUS FAN FUNCTION (COOL OR DRY MODE ONLY):

- Press and hold the FAN SPEED button for 3 seconds until the continuous fan indicator light turns on. This activates constant fan operation, meaning the fan will run continuously regardless of whether the compressor is cycling on or off.

8. SLEEP MODE/RESET FILTER

- To activate SLEEP mode, press the SLEEP button while the unit is operating in COOL mode. The indicator light above the button will illuminate. The set temperature will increase by 1°F - 2°F after 30 minutes and remain at that level for 7 hours. After 7 hours, the unit will return to the originally selected temperature, ending SLEEP mode and resuming normal operation.

NOTE: SLEEP mode is not available in FAN or DRY mode.

8.1 FILTER RESET FUNCTION:

- Press and hold the SLEEP button for 3 seconds to reset the filter reminder.
- The filter indicator light will illuminate after 250 hours of operation as a reminder to clean the air filter for efficient performance. After cleaning the air filter and replacing the carbon filter, press and hold the SLEEP button for 3 seconds to reset the filter reminder and turn off the indicator light.

OPERATIONAL INFORMATION:

I SENSE FEATURE

The remote control functions as a thermostat, ensuring precise temperature control. It integrates an efficient sensor and activates the I SENSE feature with a dedicated button. Once activated, it transmits temperature signals to the air conditioner every 3 minutes, canceling if inactive for 7 minutes.

NOTE: Not applicable in DRY and FAN mode. Changing modes or turning off the unit disables the feature. Requires the remote within 26 feet of the indoor unit for optimal function.

NOISE LEVEL

Portable air conditioners may make sounds that are not familiar to you. The sounds listed below are normal. Noise reflecting off hard surfaces such as a floor or wall can make the sounds seem louder than they actually are.

- The compressor may make a pulsating or high-pitched sound
- Water running from the evaporator to the water tank may make a splashing sound
- Refrigerant flowing may make a gurgling sound
- Fan sound may come from front and back air vents

AUTO RESTART

In the event of a power outage, the air conditioner restarts at the previously set function mode and settings when power is restored.

COMPRESSOR LOCK OUT

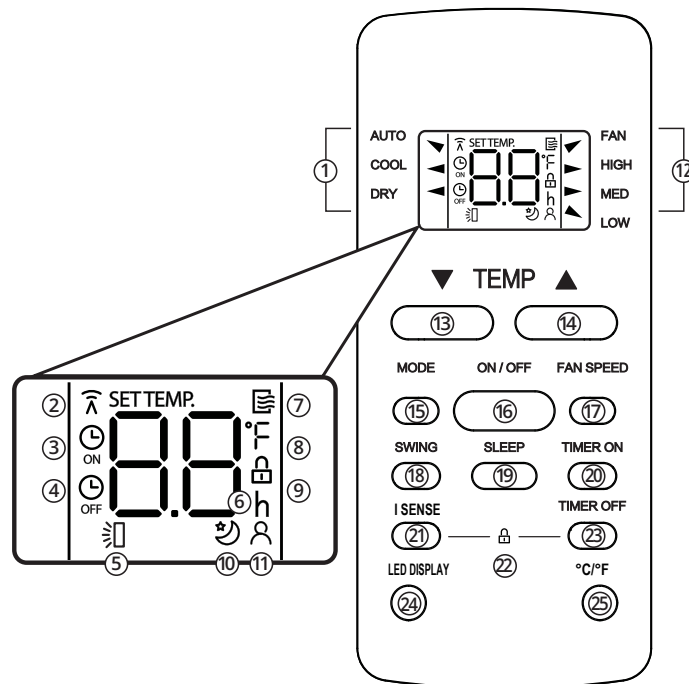
This portable air conditioner is optimized to operate in an ambient temperature of 60-95°F. The compressor circuit has an automatic 3 minute time delayed start if the unit is turned off and on quickly. This prevents overheating of the compressor and possible circuit breaker tripping.

REMOTE CONTROL

The portable air conditioner can be switched on by the remote control. To transmit signals from the remote control to the air conditioner, point the front part of the remote handset towards the control panel on the air conditioner. Reception of the signal is confirmed by a beep. The maximum signal transmission distance is approximately 8 meters/26 feet.

NOTE:

- Other appliances in the same room controlled by a remote control (TV, radio, stereo, etc.), may cause interferences
- Electronic and fluorescent lamps may interfere with the signal transmissions between the remote control and the air conditioner
- Remove the batteries if the remote control is not used for long periods



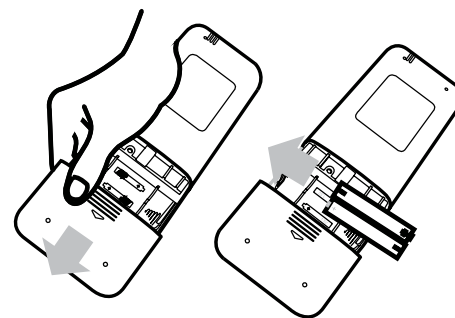
1	Mode indicator	Displays the current selected mode (Auto, Cool, Dry, or Fan)
2	Wireless indicator	Displays when the remote is turned on, and disappears when it is turned off
3	Timer On indicator	Displays when TIMER ON is set
4	Timer OFF indicator	Displays when TIMER OFF is set
5	Swing indicator	Displays auto-swing feature is turned, and disappears when it is turned off
6	Temperature/Timer display (h)	Displays the set temperature or timer setting when using ON/OFF functions "h (hours)" indicator is shown when timer settings are activated
7	Remote Control indicator	Displays when the remote is turned on and disappears when it is turned off
8	Temperature Scale indicator	Displays temperature scale Fahrenheit or Celsius
9	Lock settings indicator	Indicated all the current settings are locked
10	Sleep Feature indicator	Displays when SLEEP function is activated
11	I Sense Feature indicator	Displays when I SENSE function is activated
12	Fan Speed indicator	Displays the current selected fan speed
13	Up button	Increases set temperature/time
14	Down button	Decreases set temperature/time
15	Mode button	Controls the function modes: Auto, Cool, Dry, and Fan
16	Power button	Turns the unit On and Off
17	Fan Speed button	Controls the fan speeds: Auto, High, Medium, or Low (Continuous mode cannot be set using the remote control)
18	Swing Feature button	Press to stop or start louver auto-swing feature
19	Sleep Feature button	Starts or stops louver movement and set louver angle
20	Timer ON button	Enables the Timer On
21	I Sense Feature button	Press to initiate I SENSE feature
22	Lock Setting button	Press I SENSE and TIMER OFF buttons to lock current settings
23	Timer OFF button	Enables the Timer Off
24	LED Display button	Press this button to turn on and turn off the display on the indoor unit
25	Temperature Scale button	Press to change Temperature Scale (Fahrenheit or Celsius)

REMOTE CONTROL

REPLACING THE REMOTE BATTERIES

This remote control comes with two AAA batteries. Place the batteries in the remote control before use.

1. Slide the back cover from the remote downward to expose the battery compartment.
2. Insert the batteries, ensure to match the (+) and (-) symbols on the ends of the batteries with the symbols inside the battery compartment.
3. Slide the battery cover back into place.



Notes:

1. The air conditioner will not respond if curtains, doors, or other materials block the signal from the remote control to the unit.
2. Prevent any liquid from contact with the remote control. Do not expose the remote control to direct sunlight or heat.
3. If the infrared signal receiver on the indoor unit is exposed to direct sunlight, the air conditioner may not function properly. Use curtains to prevent the sunlight from falling on the receiver.
4. Do not mix old and new batteries or batteries of different types.
5. Do not leave the batteries in the remote control if it is not going to be used for more than two months.

SMART CONTROL APP

Download the NetHome Plus app on your Apple or Android device to enable remote access, custom scheduling, and voice control via Google Assistant and Alexa. Follow the step-by-step pairing instructions within the app to connect and manage your unit from anywhere.



Download on the
App Store



GET IT ON
Google Play

Disclaimer: NetHome Plus is a third-party application, not a Whynter product. Whynter assumes no liability for its use or performance. The app interface and features are subject to change by the developer without notice.

CARE & MAINTENANCE

SAFETY PRECAUTIONS

- Always unplug the unit before cleaning or servicing.
- DO NOT use flammable liquids or chemicals to clean the unit.
- DO NOT wash the unit under running water. Doing so causes electrical danger.
- DO NOT operate the portable air conditioner if the power supply was damaged during cleaning. A damaged power cord must be replaced with a new cord. Contact Whynter Customer Support for more information.

WATER DRAINAGE

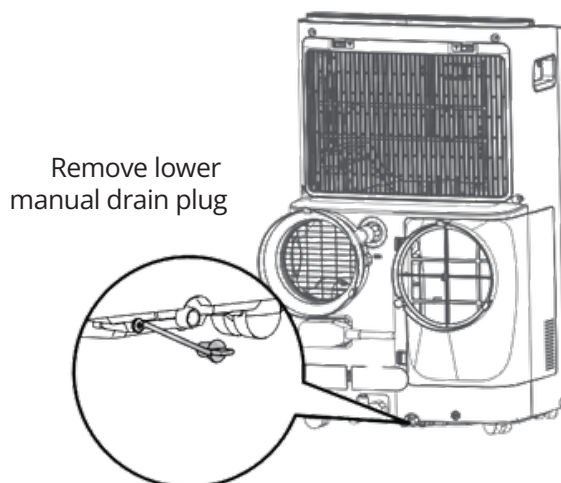
The appliance uses a self-evaporation system under normal conditions. In high-humidity environments, manual drainage may be required. When the internal drain pan becomes full, the unit will beep eight times, and the digital display will show error code P1. The air conditioning or dehumidifying function will stop, but the fan may continue to operate.

A. Manual Drain Plug

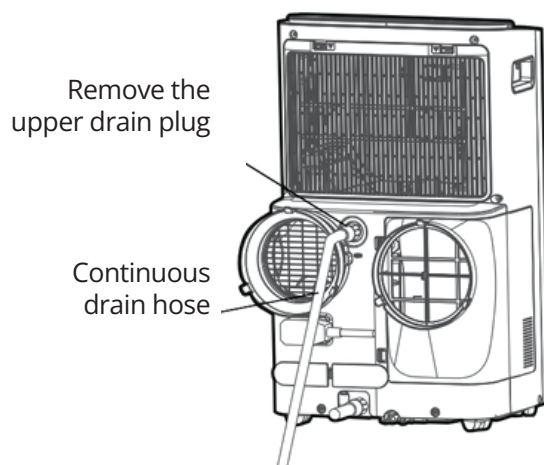
Remove the drain plug and allow the collected condensation to drain completely into a shallow external container. This may need to be done in batches if a large amount of water has accumulated. Place a towel under the drain port to catch any spills. After draining, replace the drain plug, pressing firmly to ensure a tight fit and prevent leaks.

B. Continuous Gravity Drain

For Dry mode, the continuous drain is required to automatically remove collected water. In high-humidity areas, using the continuous drain in Cooling mode is also recommended. Remove the upper drain plug and attach the included drain hose. Position the open end of the hose over a suitable receptacle, such as a basement floor drain or large bucket. Ensure the hose has no kinks or bends and is directed straight downward toward the floor. The continuous drain relies on gravity, so proper downward positioning is essential for correct drainage.



Remove lower manual drain plug



Remove the upper drain plug

Continuous drain hose

CARE & MAINTENANCE

UNIT CLEANING

1. Unplug the appliance before cleaning or servicing. Clean the cabinet with a lukewarm damp cloth and neutral detergent. Dry the cabinet with a lint-free dry cloth.
2. Do not use gasoline, paint thinner, or other chemicals to clean the appliance.
3. Do not wash the appliance directly under a tap or using a hose. It may cause electrical damage.

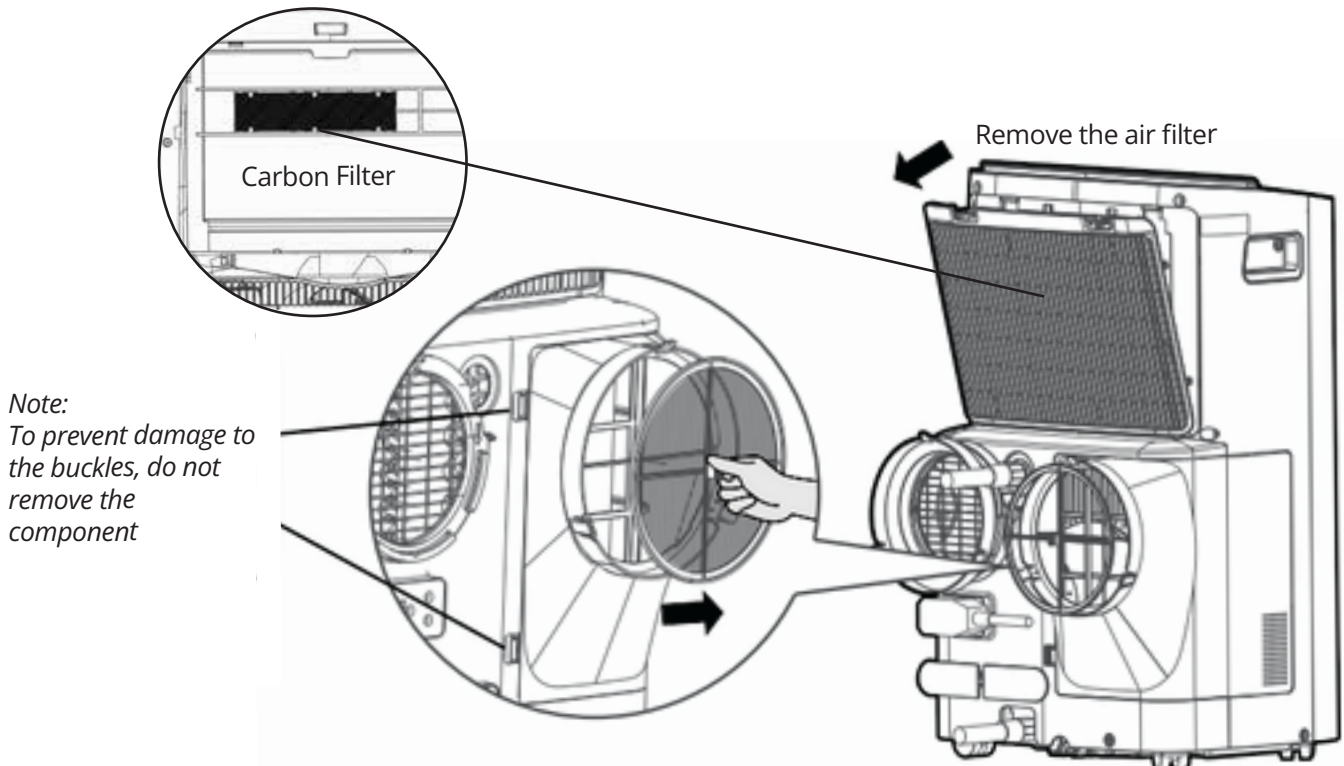
AIR FILTERS

The two washable air filters should be cleaned every two weeks to ensure efficient performance. In households with animals, the air filters may need to be cleaned more often and the external grills may need to be wiped to prevent blocked air flow.

Carbon Filter: The activated carbon filter is designed to remove smoke and other odors. It is recommended to replace the activated carbon filter every 2-3 months, or as needed.

To access the filters:

1. Switch off the air conditioner.
2. Press down on the two tabs to release the upper air intake and lower air intake grilles.
3. Use a vacuum cleaner or tap lightly to remove loose dust and dirt.
4. Rinse the filters thoroughly under warm running water (no hotter than 100°F.)
5. Dry thoroughly before re-inserting the filters.



ERROR CODES

P1 - Water tray is full - See WATER DRAINAGE section

If any of the error codes below appear on the display, unplug the air conditioner and allow it to sit undisturbed for 5 minutes. If the error code persists when the unit is plugged back in, please contact Whynter Customer Support.

EH60 - Room temperature sensor error.

EH61 - Evaporator temperature sensor error.

EC52 - Condenser temperature sensor error

EH0b - Display panel communication error.

EL0C - Refrigerant leakage detection malfunction.



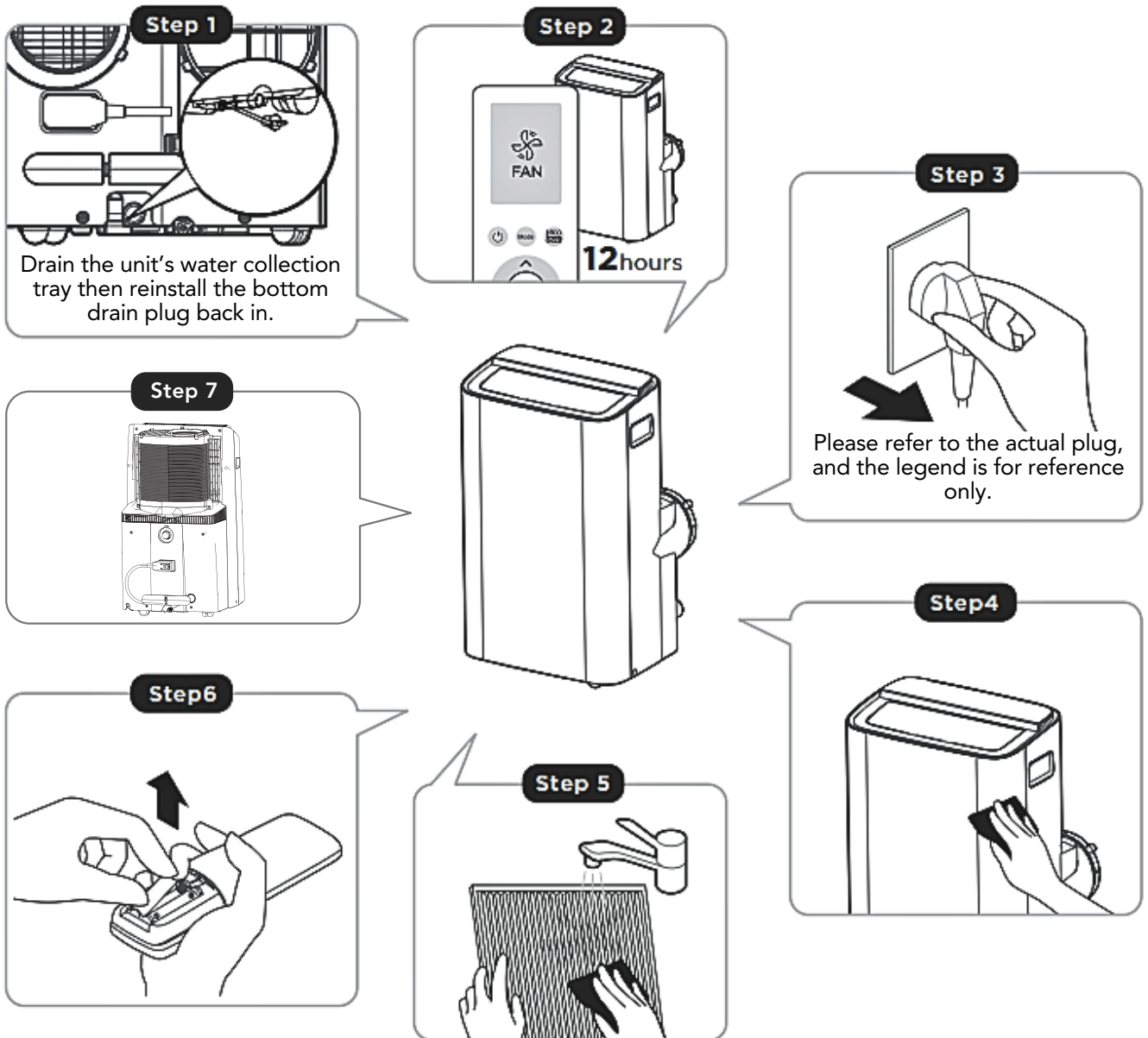
DISPOSAL INFORMATION

This appliance should not be treated as regular household waste. Check for local regulatory compliance regarding the approved and safe disposal of this appliance.

STORAGE

CAUTIONS

- Be sure to store the unit in a cool, dark place. Exposure to direct sunshine or extreme heat can shorten the lifespan of the unit.
- The cabinet and front may be dusted with an oil-free cloth or washed with a cloth dampened in a solution of warm water and mild liquid dish washing detergent. Rinse thoroughly and wipe dry.
- Never use harsh cleansers, wax or polish on the cabinet front.
- Be sure to wring excess water from the cloth before wiping around the controls. Excess water in or around the controls may cause damage to the unit.



STORAGE INSTRUCTION

1. Drain the unit's water collection tray according to the instructions in the following section.
2. Run the appliance on FAN mode for 12 hours in a warm room to dry it and prevent mold.
3. Turn off the appliance and unplug it.
4. Clean the appliance by wiping its surfaces with a soft cloth dampened.
5. Clean the air filter according to the instructions in the previous section. Reinstall the clean, dry filter before storing.
6. Remove the batteries from the remote control.
7. Turn the unit off and unplug it. Wrap the power cord around the power cord buckle
8. Insert the power plug end into the power plug socket on the back of the unit.



Troubleshooting

Many common portable air conditioner problems are easily resolved. Try the troubleshooting suggestions below to see if the problems can be resolved before having to contact the service department.

Problem	Possible Causes	Solutions
The portable air conditioner does not turn on	<ul style="list-style-type: none"> • Power failure / outage • The automatic switch, line fuse, or breaker has been tripped • The power supply voltage is too low • The power cord is damaged - The L.C.D.I. power plug for the unit is tripped • The internal water reservoir is full, and "P1" appears on display 	<ul style="list-style-type: none"> • Restore the power supply • Flip the switch / change the fuse / turn the breaker back on. Also, note that you may have too many appliances drawing power on one circuit, so you may need to move other appliances to another circuit • Move the unit onto another circuit with the correct voltage - Call for service. Only authorized personnel should replace damaged power cords or power plugs • Press the Reset button on the L.C.D.I. power plug • Drain water from the air conditioner • Possible loose internal connection • Contact Whynter for service
The unit turns on but the compressor does not turn on (the fan runs, but the unit is not cooling)	<ul style="list-style-type: none"> • The room temperature is outside of the operational tolerances of the unit • The Cooling mode is not on • The compressor has not turned on yet because of its time delay • The set temperature is too high - The internal water reservoir is full, and "P1" appears on display 	<ul style="list-style-type: none"> • This unit is designed to work best in ambient temperatures of 60°F to 90°F • Press the MODE button until the COOL light is shown on the display • Give the compressor 3 minutes to turn on after the Cooling mode has been selected • Set the air conditioner to a lower temperature • It is recommended to set the temperature to at least 5°F below the ambient temperature • Either manually drain the water by removing the drain plug or allow the unit to exhaust the water itself by running the fan-only mode. Then, cooling will resume • Possible loose internal connection • Contact Whynter for service
The air coming out of the unit is not very cold, or the airflow volume is weak	<ul style="list-style-type: none"> • The filters are dirty or obstructed • The air intake or exhaust is obstructed • The unit is set in DRY or FAN mode • The unit is set to low fan speed 	<ul style="list-style-type: none"> • Clean the air filters • Make sure there is at least 20 inches of clearance from the air intake. Ensure the length of the exhaust hose is as short as possible • Set the unit to the cooling mode • Set the unit to a higher fan speed



Live Support

Still having issues? Get real-time help through our live chat.





Troubleshooting

Many common portable air conditioner problems are easily resolved. Try the troubleshooting suggestions below to see if the problems can be resolved before having to contact the service department.

Problem	Possible Causes	Solutions
The unit has worked for a long time, but the room is not cold enough	<ul style="list-style-type: none"> • Windows or doors are open • There are too many people in the room • There is direct sunshine into the room • The room is a kitchen or has many heat-producing appliances • There is a server in the room • The room is too large 	<ul style="list-style-type: none"> • Close all windows and doors • You may need additional cooling or another air conditioner • Close curtains or blinds and try to minimize the amount of direct sunlight in the room • You may need additional cooling or another air conditioner
The unit is very noisy	<ul style="list-style-type: none"> • The unit is not level • The surface underneath the unit is uneven • Low power voltage 	<ul style="list-style-type: none"> • Make sure the unit is on a hard, level, and stable surface • Move the unit to a location with a level and hard floor • Ensure the wall outlet supports the required power consumption of the air conditioner and do not use an extension cord
The unit leaks water	<ul style="list-style-type: none"> • The unit is tilted or not leveled • The water tank is full 	<ul style="list-style-type: none"> • Make sure the unit is leveled • Drain water from the drain plug at the back of the air conditioner
Fan speed cannot be changed	<ul style="list-style-type: none"> • Fan speed differences are not very noticeable 	<ul style="list-style-type: none"> • The fan speed difference is not very noticeable when the compressor is on • Try setting the unit to Fan-only mode, you should be able to hear the difference between high and low fan speed settings



Live Support

Still having issues? Get real-time help through our live chat.





1 YEAR LIMITED WARRANTY & 3 YEARS WARRANTY ON COMPRESSOR

Warranty begins from the original date of purchase

This WHYNTER product is warranted to the original owner, purchased from an authorized Whynter dealer within the 48 U.S. continental states, for one year from the original purchase date against defects in material and workmanship under normal residential usage. Should your WHYNTER product prove defective within one year from the date of purchase, contact Whynter's Customer Support team with the serial number and proof of purchase to make a warranty claim. A Return Authorization number must be issued before returning any parts or products. Parts or products received without a Whynter-issued Return Authorization number will be refused. Under this warranty, Whynter will repair or replace any parts found defective with new or re-manufactured parts or exchange the defective product with a new, refurbished, or re-manufactured product at Whynter's discretion. All defective products and parts covered by this warranty will be repaired or replaced on a mail-in basis to Whynter's Service Center. This warranty is not transferable. After the expiration of the warranty, the cost of labor and parts will be the responsibility of the original owner.

The compressor of the portable air conditioner is warranted for an additional two years after the one-year limited warranty expires from the date of purchase.

After two months to one year, the customer will be responsible for the return freight cost to Whynter's Service Center. Please package the product carefully in its original packaging to avoid damage during transit. Whynter is not responsible for damage resulting from shipper mishandling or improper packaging. Please retain the original box and packaging materials.

THIS WARRANTY DOES NOT COVER:

- Acts of God, such as fire, flood, hurricanes, earthquakes and tornadoes.
- Improper power supply such as power surge, low voltage, defective household wiring or inadequate fuses.
- Use in commercial or industrial applications.
- Damage, accidental or otherwise, to the product while in the possession of a consumer not caused by a defect in material or workmanship.
- Damage caused by consumer misuse, tampering, lack of maintenance or failure to follow the care and special handling provisions in the instructions.
- Damage to the finish of the case, or other appearance parts caused by wear.
- Damage caused by repairs or alterations to the product by anyone other than authorized by the manufacturer.
- Removal, Replacement Packaging, Freight and Insurance cost for the warranty service.
- Products sold AS IS or from an unauthorized reseller.
- Products that have had their serial numbers removed or defaced.

DISCLAIMER OF IMPLIED WARRANTIES; LIMITATION OF REMEDIES

CUSTOMER'S SOLE AND EXCLUSIVE REMEDY UNDER THIS LIMITED WARRANTY SHALL BE PRODUCT REPAIR OR REPLACEMENT AS PROVIDED HEREIN. CLAIMS BASED ON IMPLIED WARRANTIES, INCLUDING WARRANTIES OF MERCHANTABILITY OR FITNESS FOR A PARTICULAR PURPOSE, ARE LIMITED TO ONE YEAR OR THE SHORTEST PERIOD ALLOWED BY LAW, BUT NOT LESS THAN ONE YEAR. WHYNTER SHALL NOT BE LIABLE FOR CONSEQUENTIAL OR INCIDENTAL DAMAGES SUCH AS PROPERTY DAMAGE AND INCIDENTAL EXPENSES RESULTING FROM ANY BREACH OF THIS WRITTEN LIMITED WARRANTY OR ANY IMPLIED WARRANTY. SOME STATES AND PROVINCES DO NOT ALLOW THE EXCLUSION OR LIMITATION OF INCIDENTAL OR CONSEQUENTIAL DAMAGES, OR LIMITATIONS ON THE DURATION OF IMPLIED WARRANTIES, SO THESE LIMITATIONS OR EXCLUSIONS MAY NOT APPLY TO YOU. UNAUTHORIZED MODIFICATIONS OR ALTERATIONS TO THIS UNIT WILL VOID THE MANUFACTURER'S WARRANTY. THIS WRITTEN WARRANTY GIVES YOU SPECIFIC LEGAL RIGHTS. YOU MAY ALSO HAVE OTHER RIGHTS THAT VARY FROM STATE TO STATE. PRODUCT CONTENTS AND SPECIFICATIONS MAY CHANGE WITHOUT NOTICE.



**Need Help Fast?
Chat with Us!**
Get instant answers 24/7



Proof of Purchase
Please Retain Original
Proof of Purchase



Need Help Fast?
Chat with Us!
Get instant answers 24/7



**JOIN THE
CONVERSATION**



E: support@whynter.com | T: 866-WHYNTER | www.whynter.com | ©2026 Whynter LLC

Disclaimer: All information and technical data provided in this manual are approximate values and estimations. Whynter reserves the right to modify product specifications or documentation without prior notice to improve performance and safety.