



Dodge Ram 1994-1997

Visit MetraOnline.com for more detailed information about the product and up-to-date vehicle specific applications

KIT FEATURES

- ISO DDIN radio provision*
- Painted scratch resistant matte black

* This kit can only be used with shallow mount radios, or radios which have an "L" shaped chassis design, with the radio chassis at the top of the screen, like Sony models XAV-AX100, XAV-AX1000, XAV-AX200, XAV-A500, and XAV-V10BT †

† Refer to the radio manufacturer for current models

KIT COMPONENTS

- A) Radio trim panel • B) Cut template • C) Radio brackets • D) Screw cover • E) Phillips screws (2)

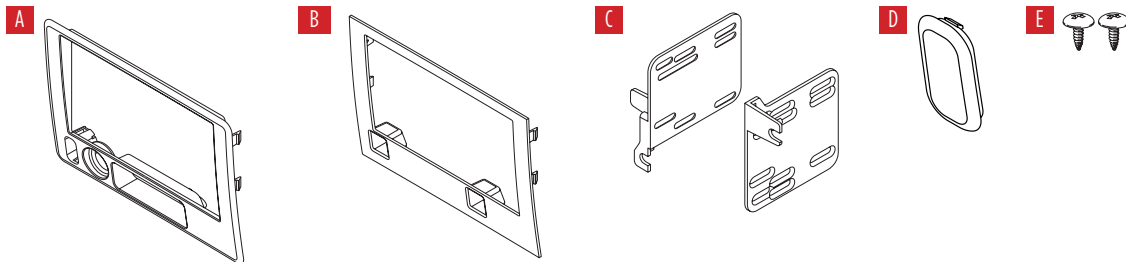


TABLE OF CONTENTS

Dash Disassembly	2
Kit Preparation	3
Kit Assembly	3

WIRING & ANTENNA CONNECTIONS (sold separately)

Wiring Harness: 70-1817

Antenna Adapter: Not required

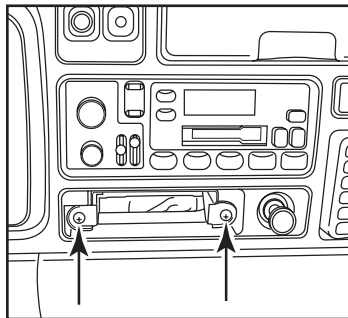
TOOLS REQUIRED

- Panel removal tool • Phillips screwdriver
- Cutting tool • 3/8" socket set

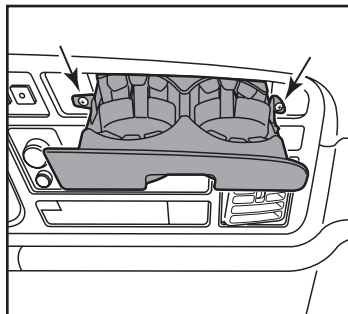
Attention! Let the vehicle sit with the key out of the ignition for a few minutes before removing the factory radio. When testing the aftermarket equipment, ensure that all factory equipment is connected before cycling the key to ignition.

DASH DISASSEMBLY

1. Remove the ashtray, then remove (2) Phillips screws exposed. Remove the ashtray bracket. (Figure A)
2. Slide the cup-holder out, then remove (2) Phillips screws exposed. Remove the cup-holder assembly. (Figure B)



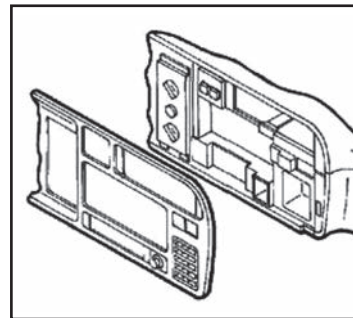
(Figure A)



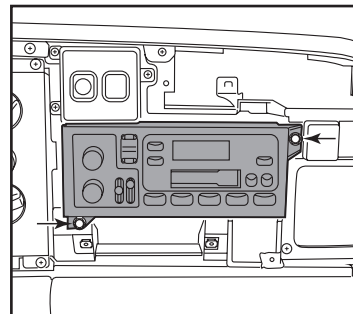
(Figure B)

3. Unclip, unplug, and remove the dashboard trim panel. (Figure C)
4. Remove (2) 3/8" screws securing the radio. Slide the radio out, then unplug and remove. (Figure D)

Continue to Kit Preparation



(Figure C)



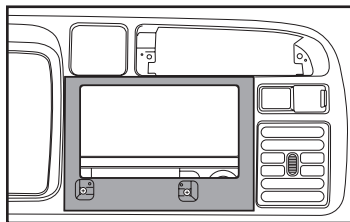
(Figure D)

KIT PREPARATION

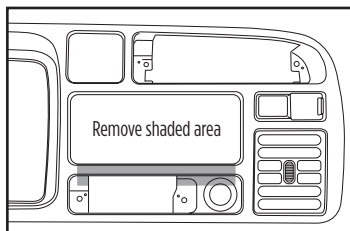
Attention! The factory dashboard trim panel and sub-dash will have to be cut to allow the aftermarket radio to fit. Once cut, the factory radio and ashtray will no longer be able to be re-installed.

1. Unscrew the cigarette lighter from the factory dashboard panel.
2. Temporarily clip the panel back to the vehicle.
3. Place the **cut template** over the panel, then secure using the ashtray assembly hardware. Mark the area to be cut. (Figure A)
4. Remove the screws securing the **cut template**, then discard. Remove the panel from the vehicle.
5. Cut the areas shown from the panel and sub-dash to allow room for the aftermarket radio. (Figure B, C)
6. Install the cigarette lighter to the **radio trim panel**.

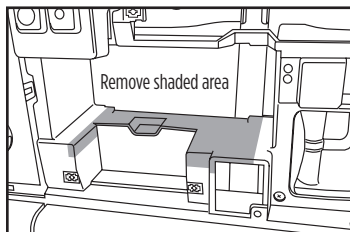
Continue to Kit Assembly



(Figure A)



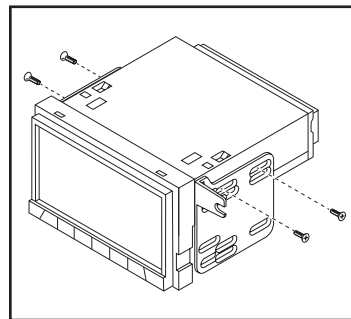
(Figure B)



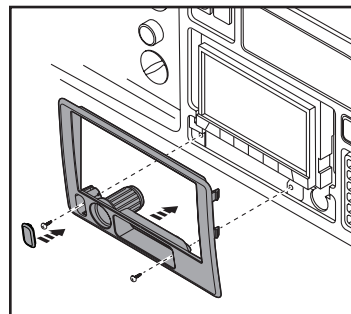
(Figure C)

KIT ASSEMBLY

1. Secure the **radio brackets** to the radio using screws supplied with the radio. (Figure A)
2. Locate the factory wiring harness and antenna connector in the dash and complete all necessary connections to the radio. Metra recommends using the proper mating adapter from Metra and/or Axxess. Test the radio for proper operation.
3. Slide the radio assembly into the dash, then secure using the factory hardware.
4. Reconnect all factory harnesses to the dashboard trim panel. Clip the panel back to the dash.
5. Reinstall the cup-holder assembly using the factory hardware.
6. Reconnect the cigarette lighter harness. Snap the **radio trim panel** onto the dashboard trim panel, then secure using the (2) screws provided. Snap the **screw cover** over the left screw cavity to complete the installation. (Figure B)



(Figure A)



(Figure B)



95-6555B
INSTALLATION INSTRUCTIONS



If you are having difficulties with the installation of this product, contact our Tech Support line either by phone at **386-257-1187**, or email at **techsupport@metra-autosound.com**. Before doing so, look over the instruction booklet a second time and ensure that the installation was performed exactly as the instruction booklet is stated. Have the vehicle apart and ready to perform troubleshooting steps before contacting Metra/Axxess Tech Support.



KNOWLEDGE IS POWER

Enhance your installation and fabrication skills by enrolling in the most recognized and respected mobile electronics school in our industry. Log onto www.installerinstitute.com or call 800-354-6782 for more information and take steps toward a better tomorrow.



**Metra recommends MECP
certified technicians**