

Desk with Drawers
Bureau avec Tiroirs

CB10722

USA office: Fontana

AUS office: Truganina

FRA office: Saint Vigor d'Ymonville

GBR office: FDS Corporation Limited, Unit 4, Blackacre Road, Great Blakenham, Ipswich, Ip6 0FL, United Kingdom

If you're having difficulty, our friendly
customer team is always here to help.



USA: cs.us@costway.com
AUS: cs.au@costway.com
GBR: cs.uk@costway.com
FRA: cs.fr@costway.com

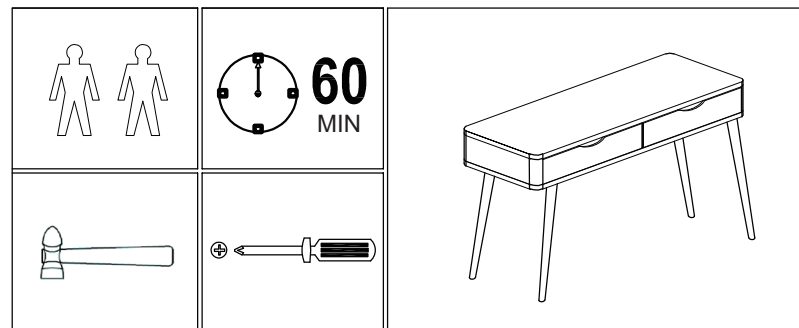
THIS INSTRUCTION BOOKLET CONTAINS **IMPORTANT** SAFETY INFORMATION.
PLEASE READ AND KEEP FOR FUTURE REFERENCE.

EN



Before You Start

- ⚠ Please read all instructions carefully.
- ⚠ Retain instructions for future reference.
- ⚠ Separate and count all parts and hardware.
- ⚠ Read through each step carefully and follow the proper order.
- ⚠ We recommend that, where possible, all items are assembled near to the area in which they will be placed in use, to avoid moving the product unnecessarily once assembled.
- ⚠ Always place the product on a flat, steady and stable surface.
- ⚠ Keep all small parts and packaging materials for this product away from babies and children as they potentially pose a serious choking hazard.

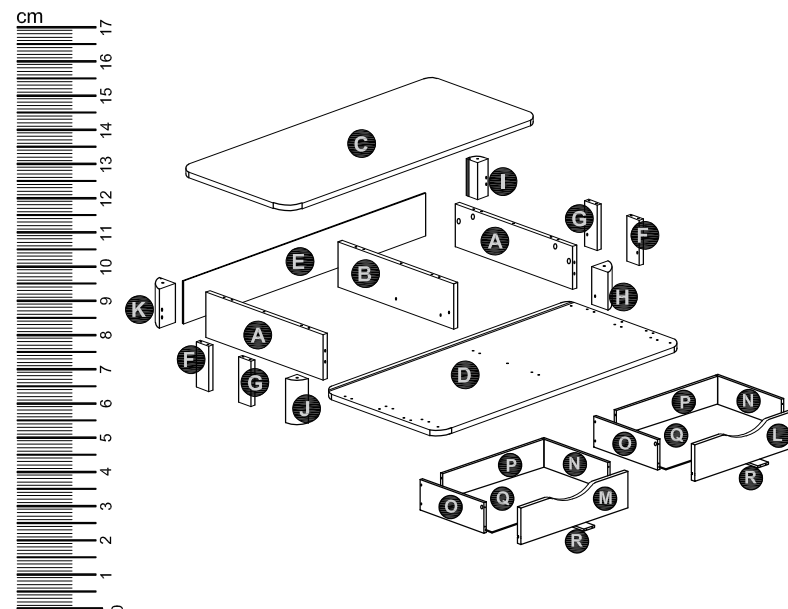


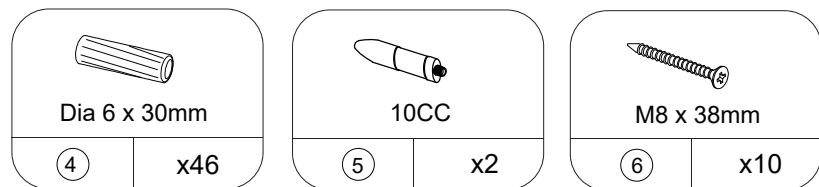
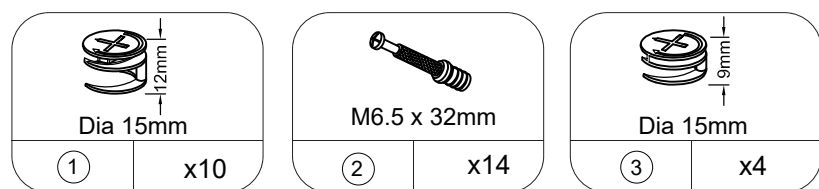
FR



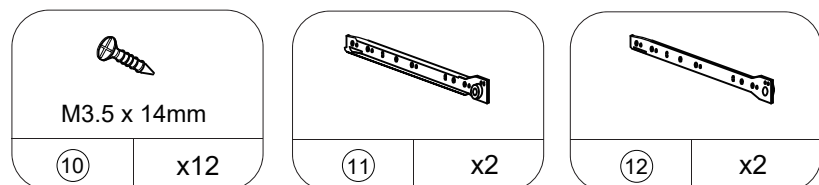
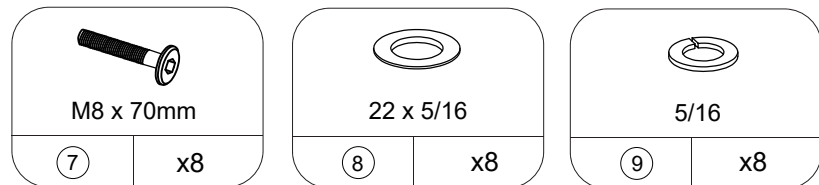
Avant de Commencer

- ⚠ Veuillez lire attentivement toutes les instructions.
- ⚠ Conservez les instructions pour vous y référer ultérieurement.
- ⚠ Vérifiez toutes les pièces et les accessoires.
- ⚠ Lisez attentivement chaque étape et suivez l'ordre correct.
- ⚠ Nous recommandons que, dans la mesure du possible, tous les produits soient assemblés à proximité de la zone où ils seront utilisés, afin d'éviter tout déplacement inutile du produit une fois assemblé.
- ⚠ Placez toujours le produit sur une surface plane et stable.
- ⚠ Conservez toutes les petites pièces de ce produit et les matériaux d'emballage hors de portée des bébés et des enfants, car ils pourraient présenter un risque d'étouffement.

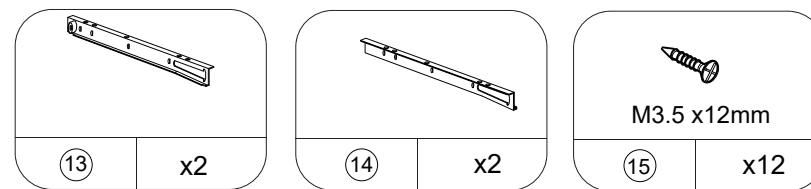




GLUE
/COLLE

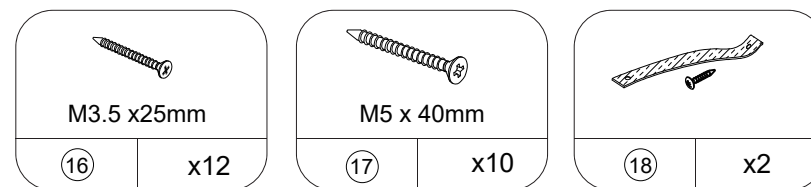


DRAWER TRACK RIGHT /RAIL DE TIROIR DROIT
DRAWER TRACK LEFT /RAIL DE TIROIR GAUCHE

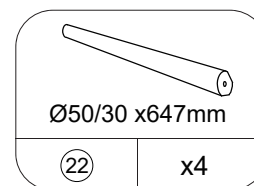
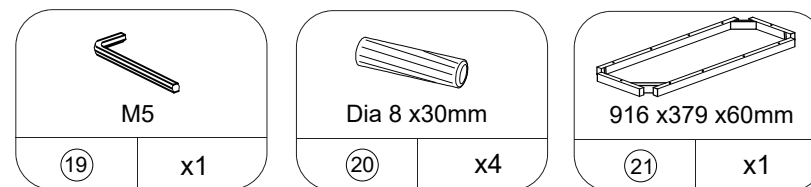


DRAWER RUNNER
RIGHT
/COULISSE DE TIROIR
DROITE

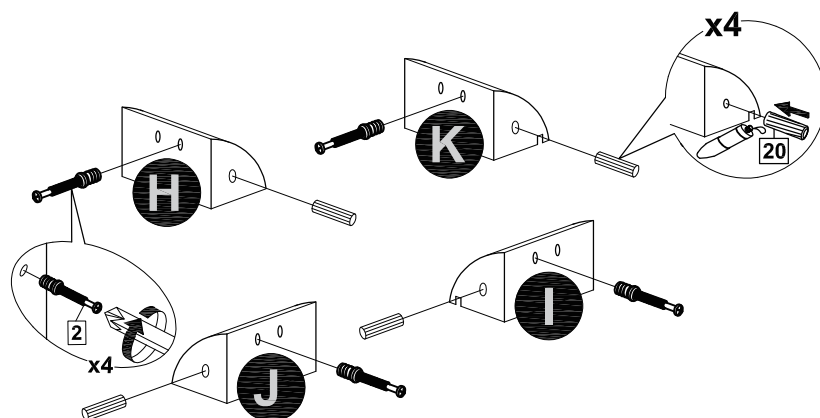
DRAWER RUNNER
LEFT
/COULISSE DE TIRAGE
GAUCHE



ANTI TIP STRAP
/SANGLE ANTI-
BASCULEMENT

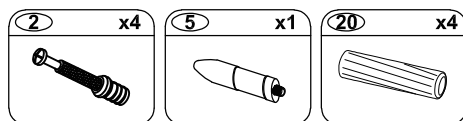
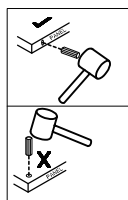


1

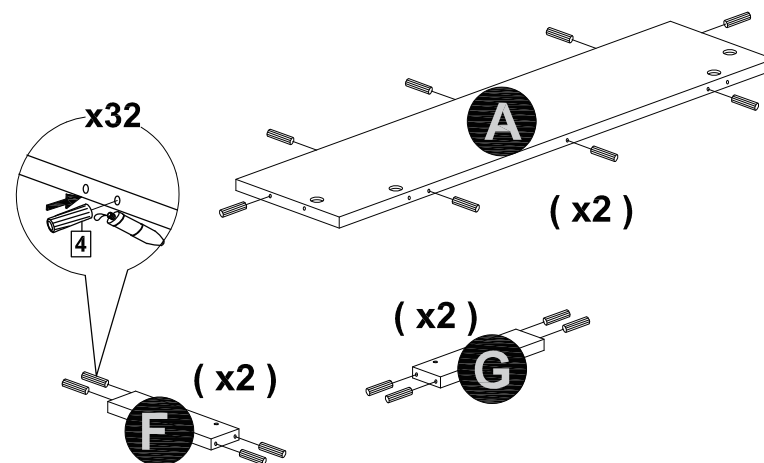


Gently tapping the dowels from side /
Taper doucement sur les chevilles par le côté

Do not tapping hard dowels from top /
Ne pas taper fort sur les chevilles par le haut

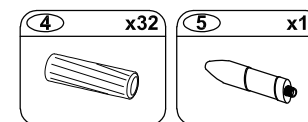
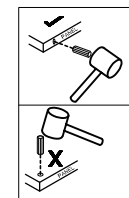


2

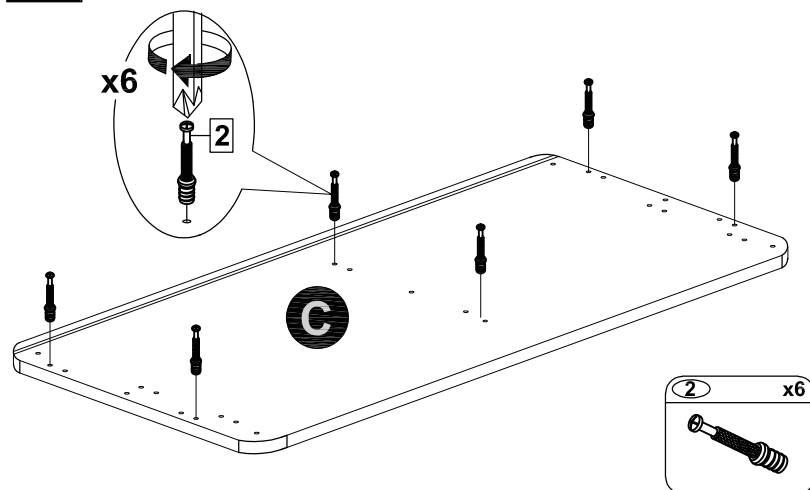


Gently tapping the dowels from side /
Taper doucement sur les chevilles par le côté

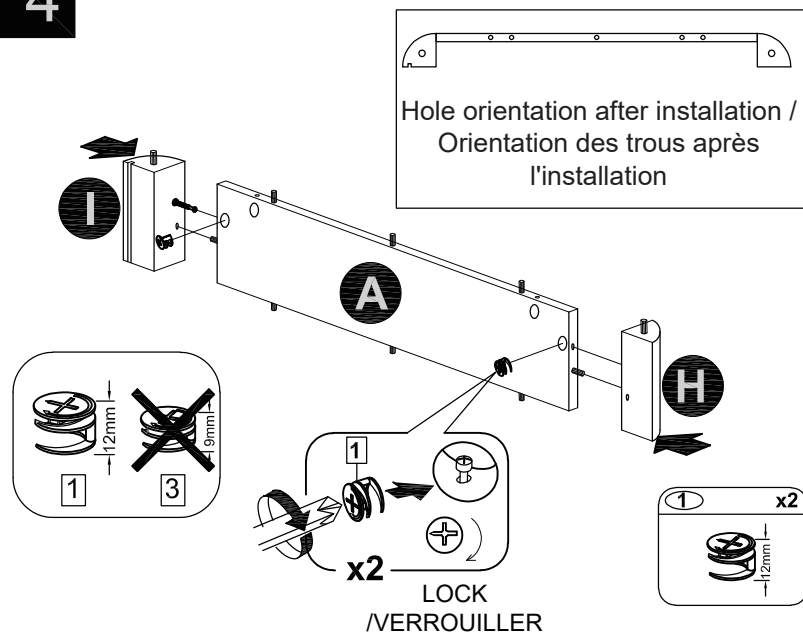
Do not tapping hard dowels from top /
Ne pas taper fort sur les chevilles par le haut



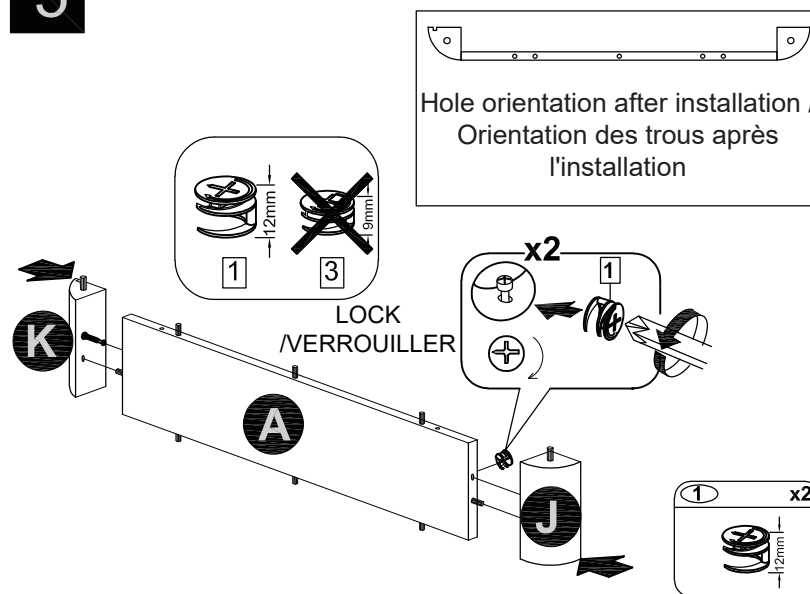
3



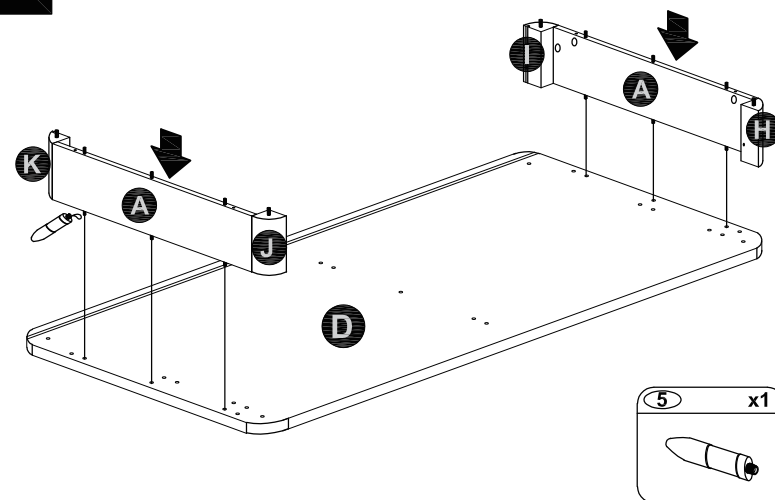
4



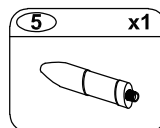
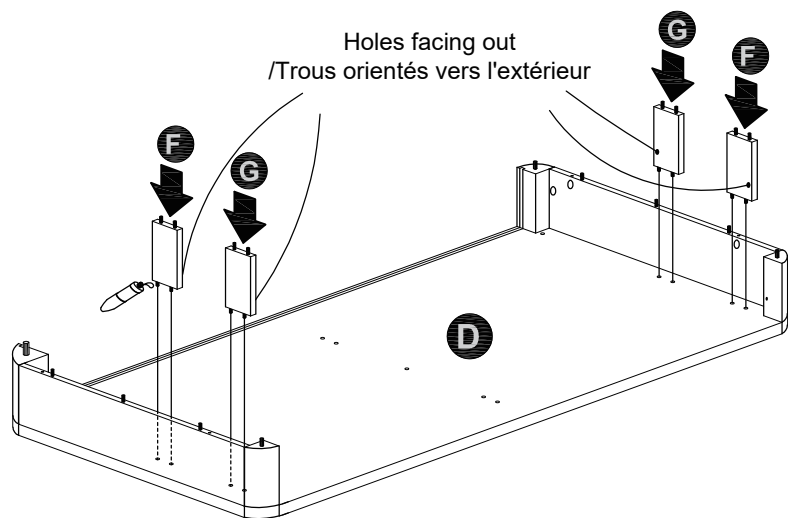
5



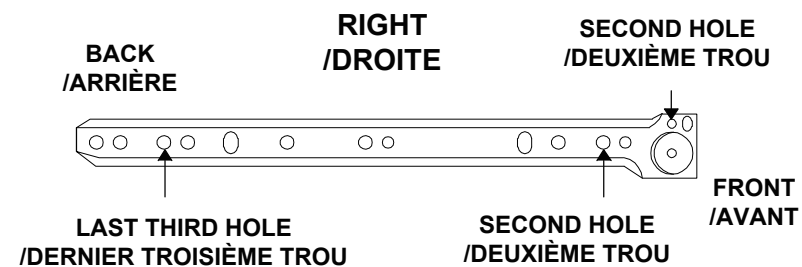
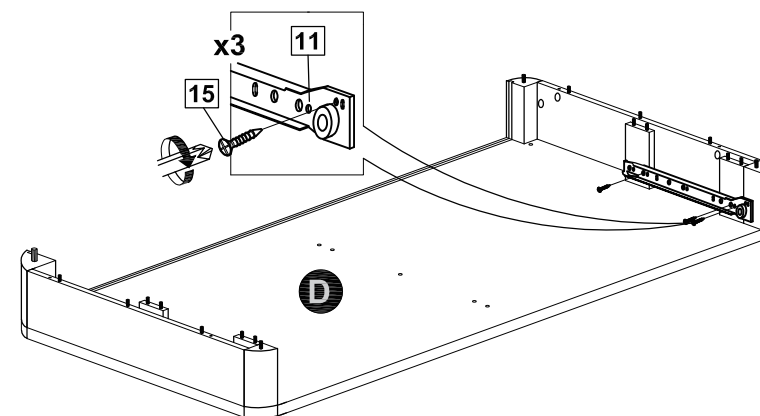
6

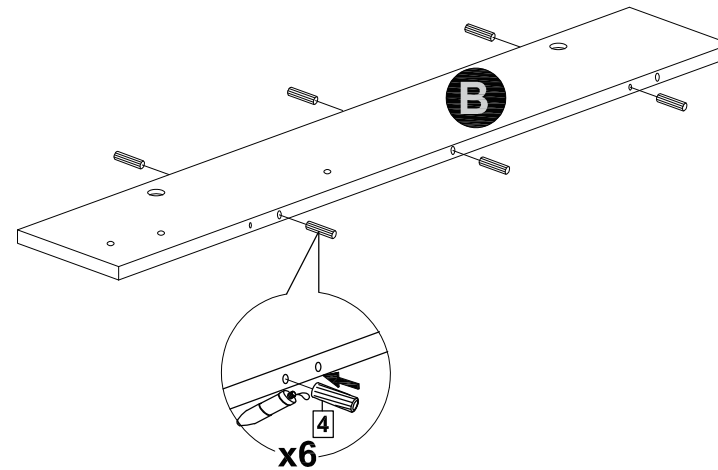
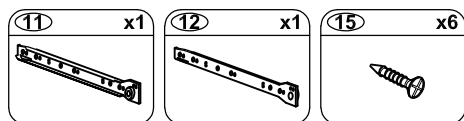
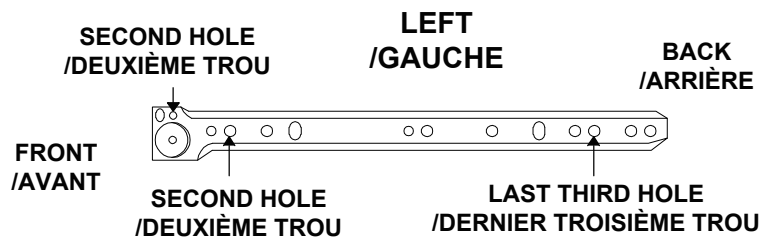
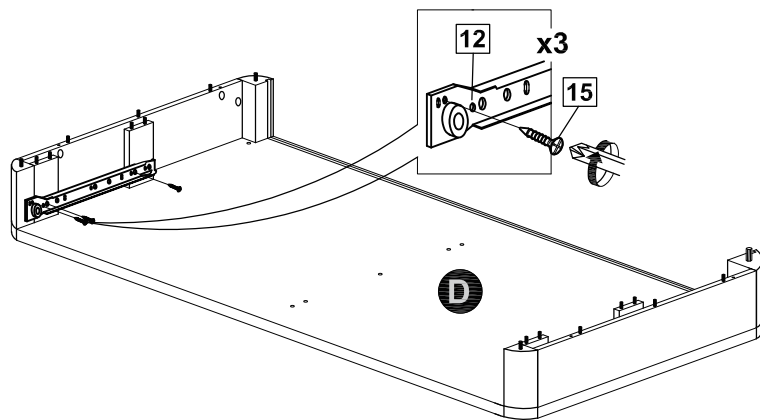


7



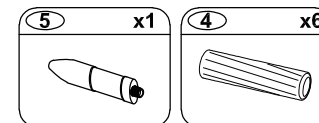
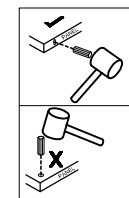
8





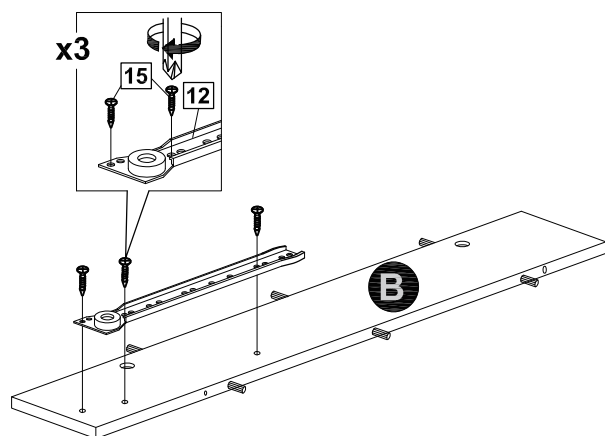
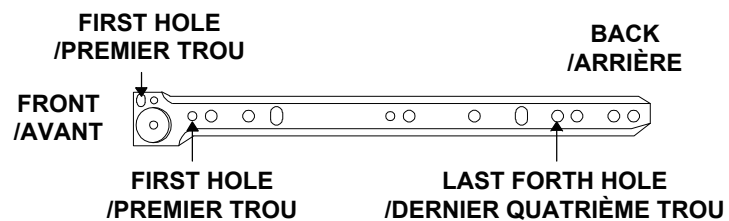
Gently tapping the dowels from side /
Taper doucement sur les chevilles par le côté

Do not tapping hard dowels from top /
Ne pas taper fort sur les chevilles par le haut

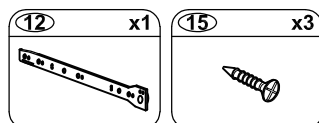


10

LEFT
/GAUCHE

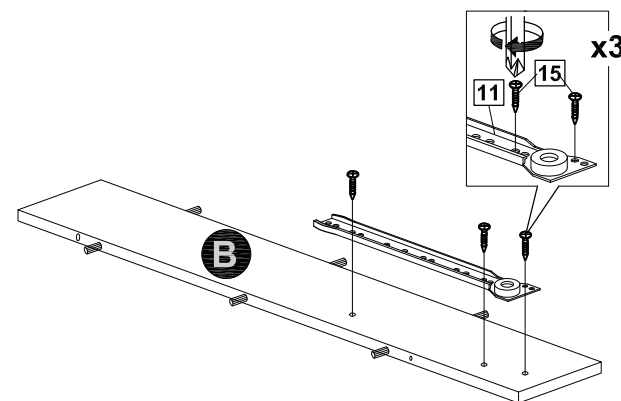
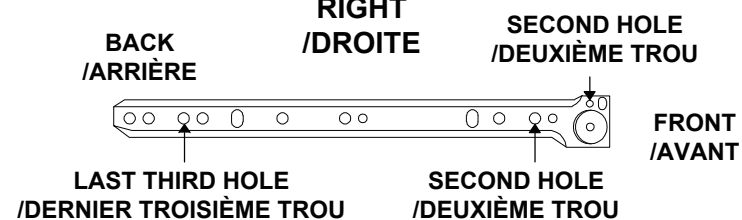


Right surface
/Surface droite

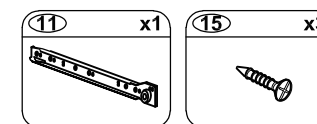


11

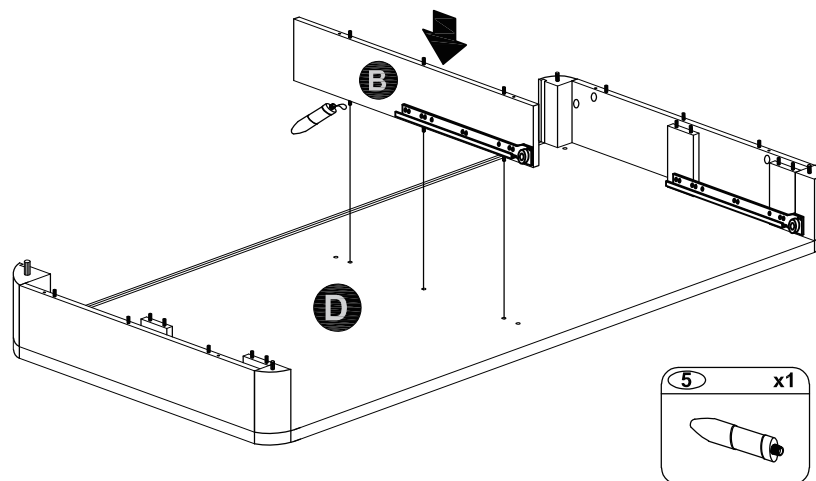
RIGHT
/DROITE



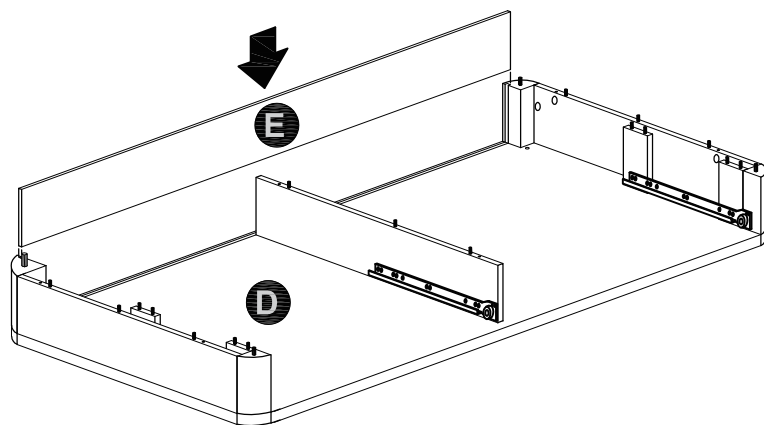
Left surface
/Surface gauche



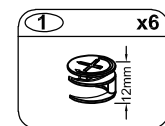
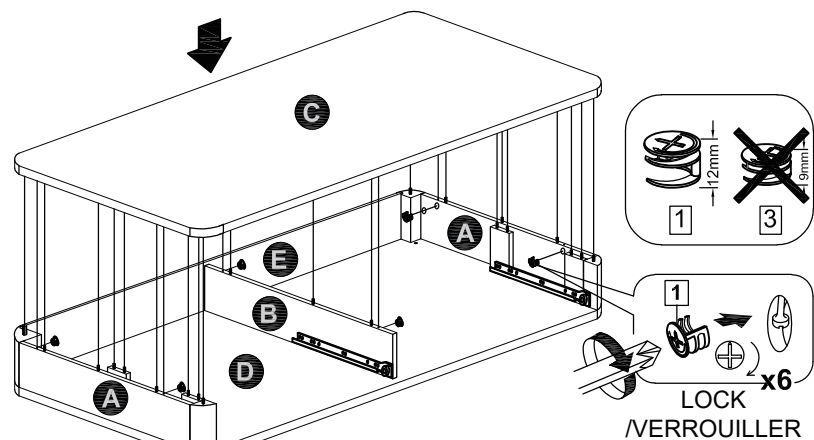
12



13

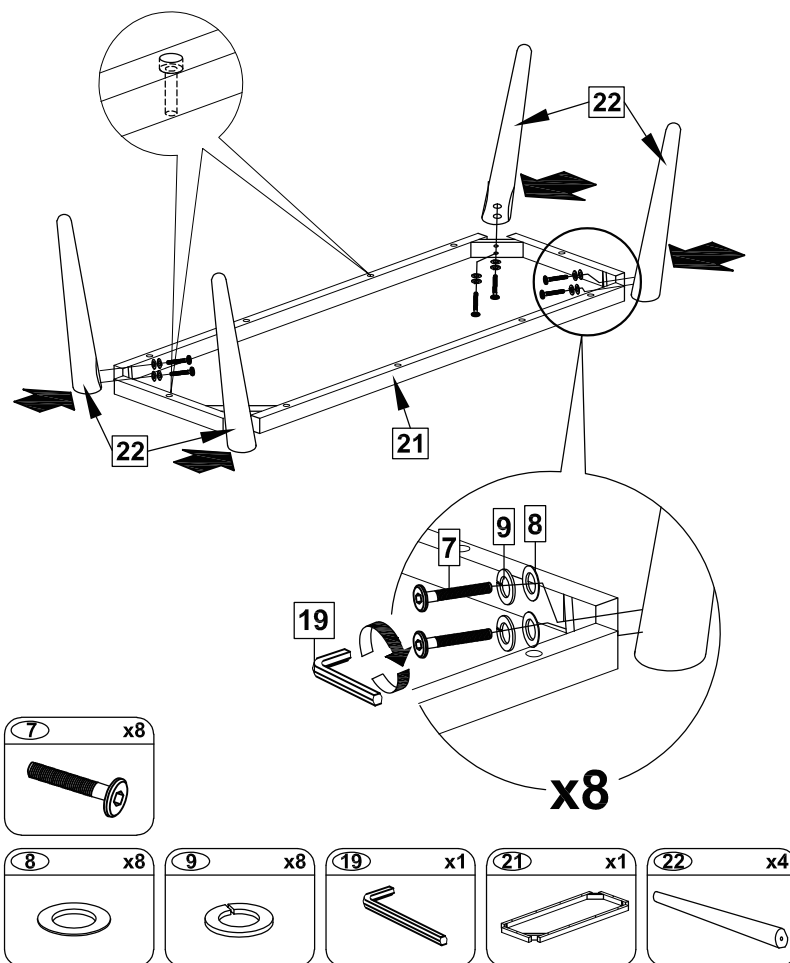


14



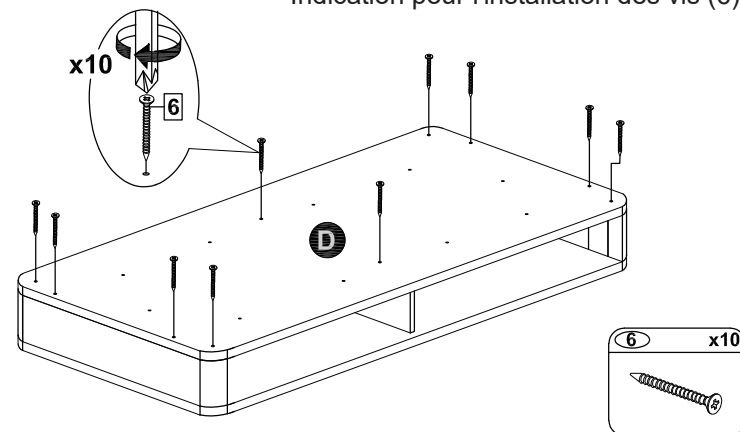
15

Bigger holes facing out when assembling /
Trous plus grands orientés vers l'extérieur lors de
l'assemblage



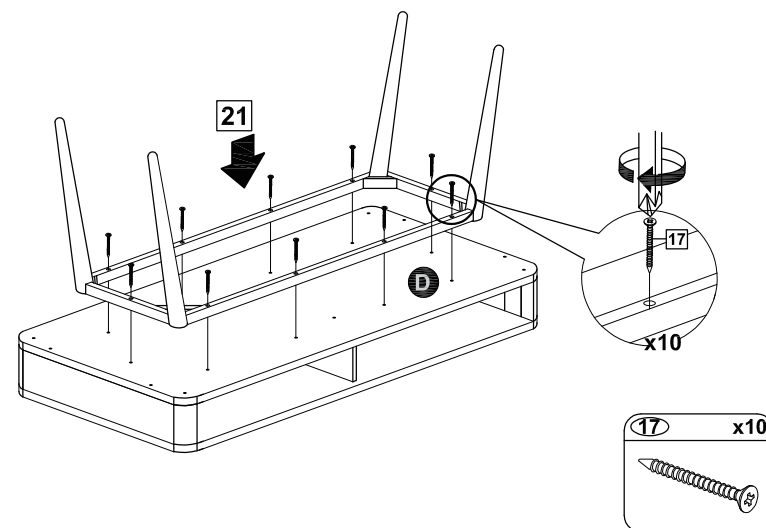
16

Indication for installing screws (6) /
Indication pour l'installation des vis (6)

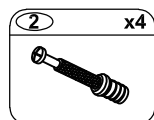
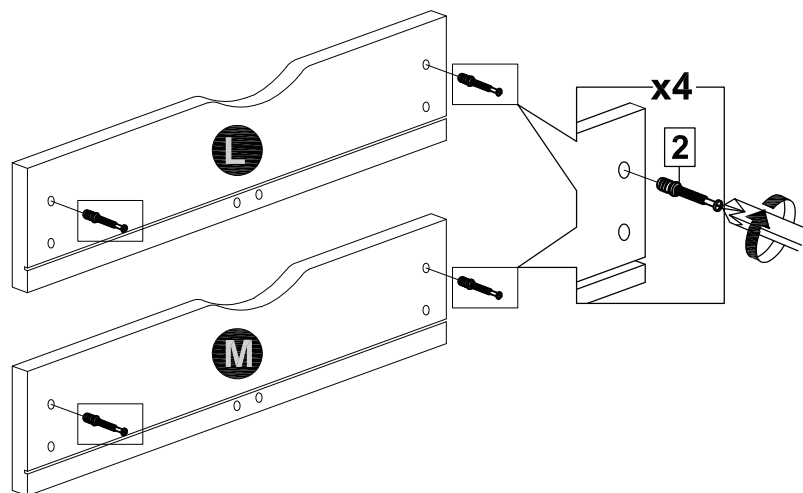


17

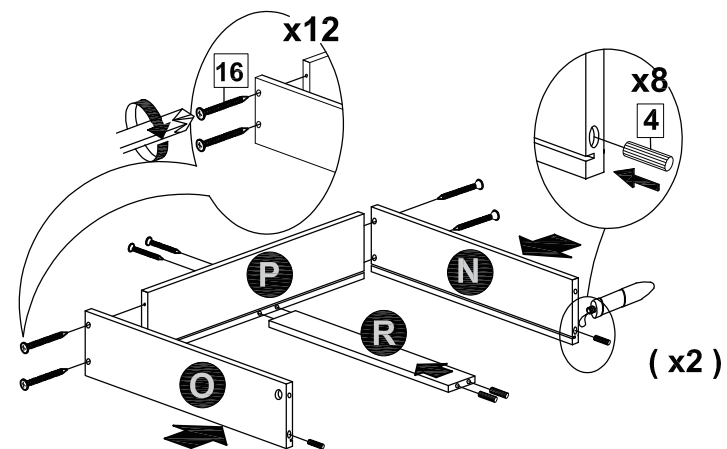
Indication for installing screws (17) /
Indication pour l'installation des vis (17)



18

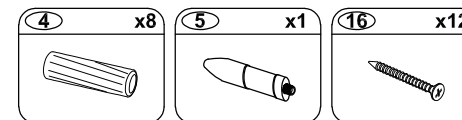
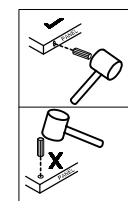


19

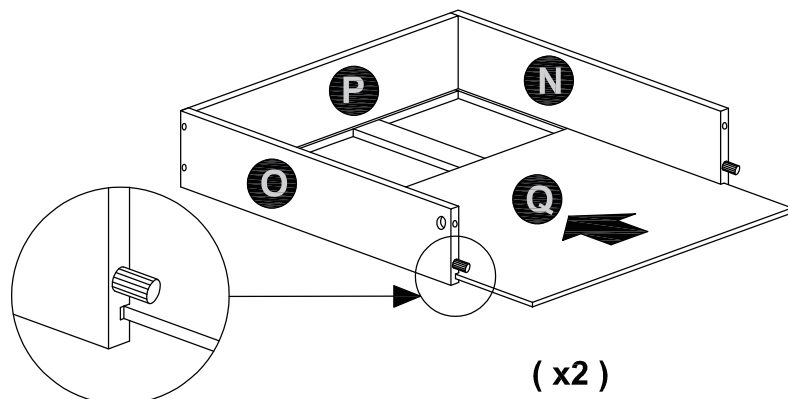


Gently tapping the dowels from side /
Taper doucement sur les chevilles par le côté

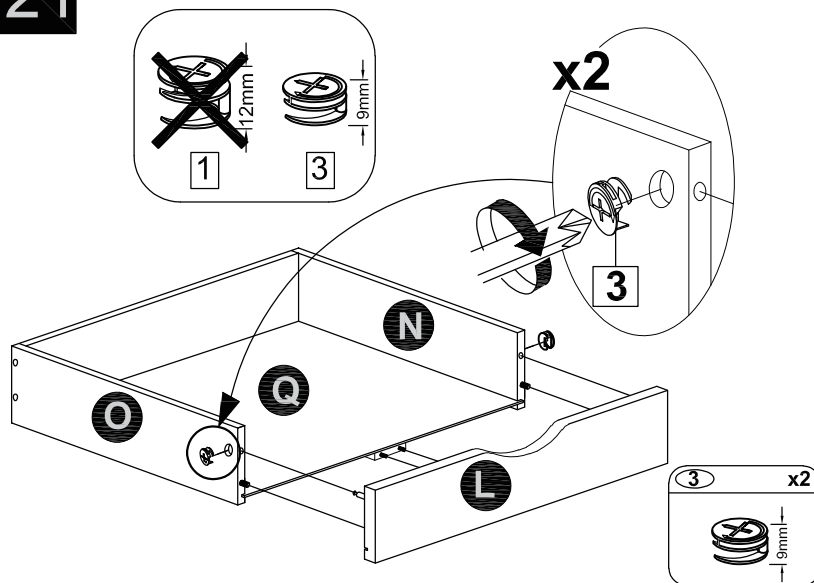
Do not tapping hard dowels from top /
Ne pas taper fort sur les chevilles par le haut



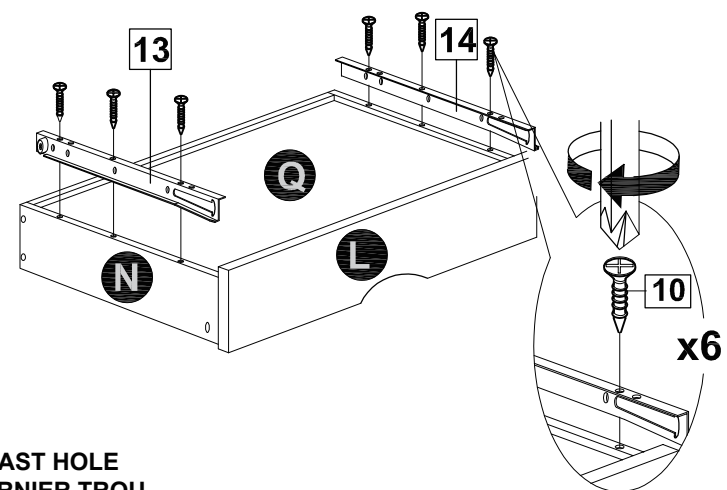
20



21



22



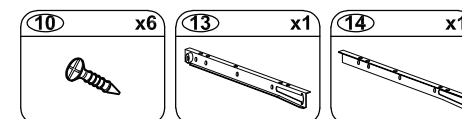
LAST HOLE
/DERNIER TROU

CENTRE HOLE
/TROU CENTRAL

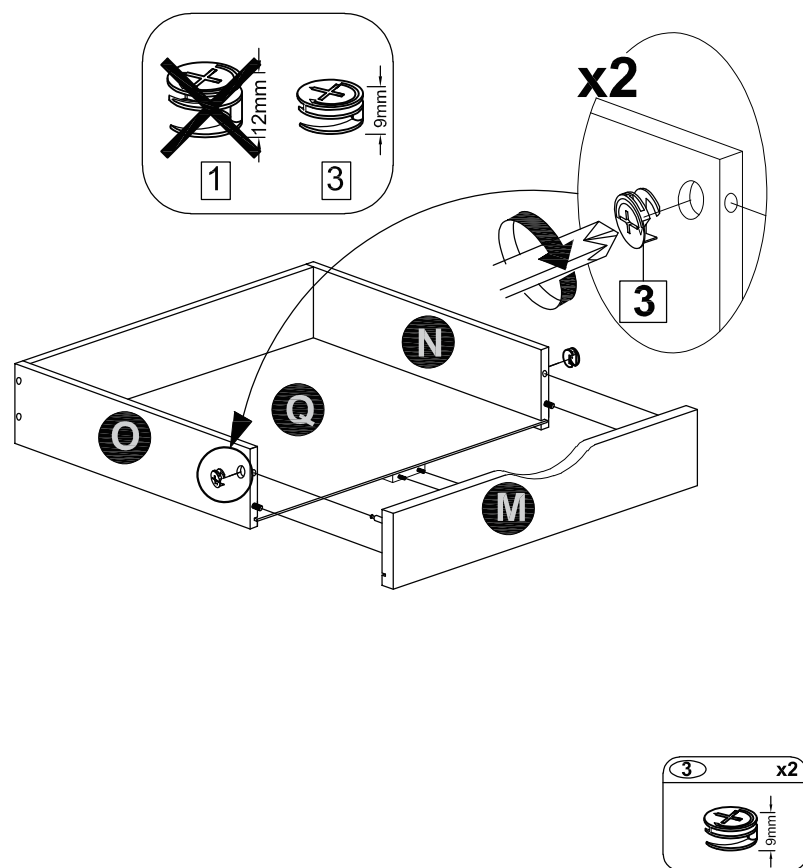
SECOND HOLE
/DEUXIÈME TROU

BACK
/ARRIÈRE

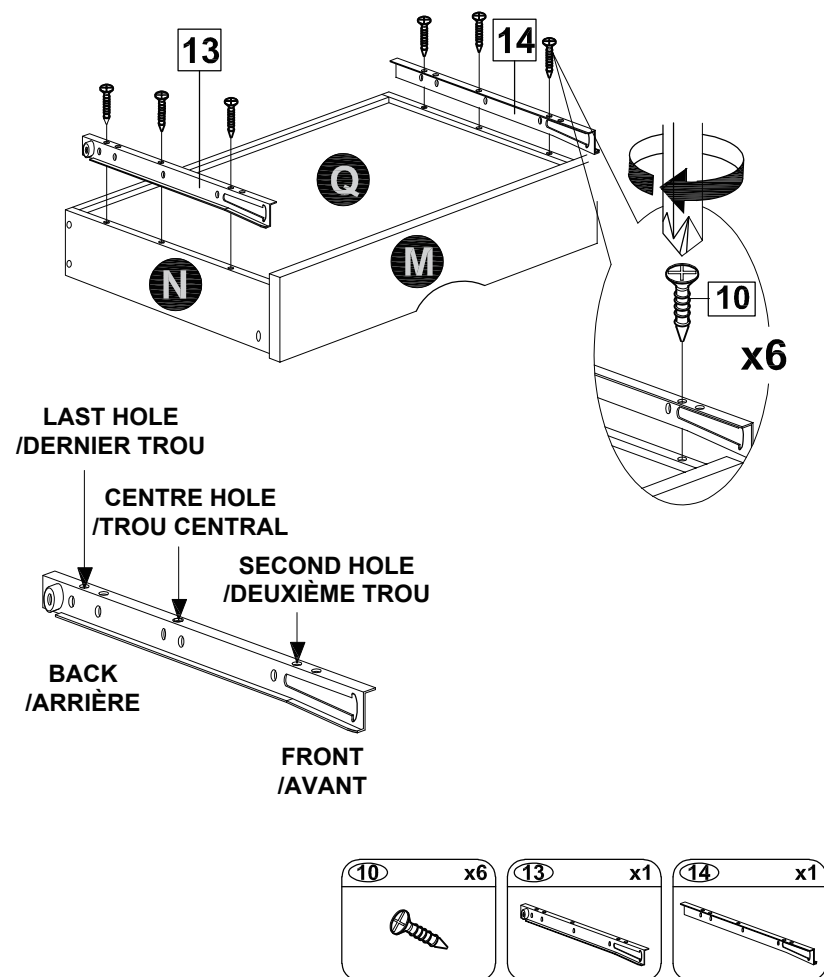
FRONT
/AVANT



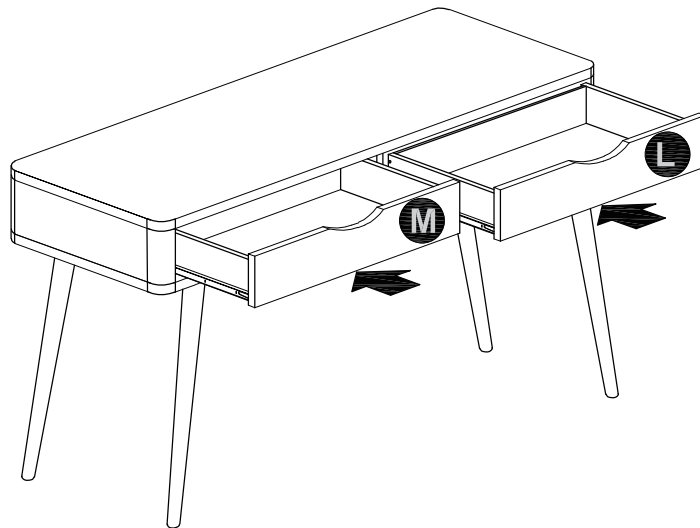
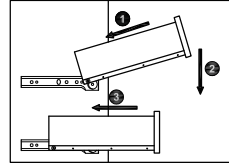
23



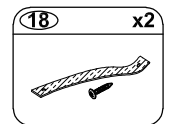
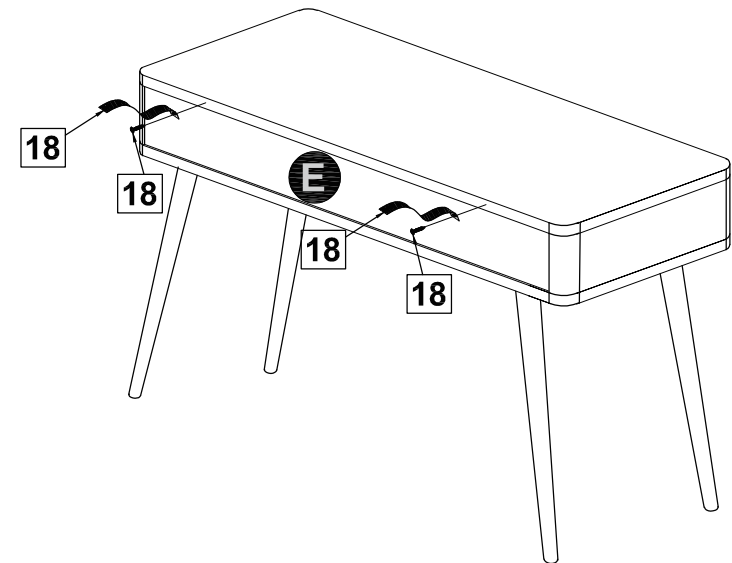
24

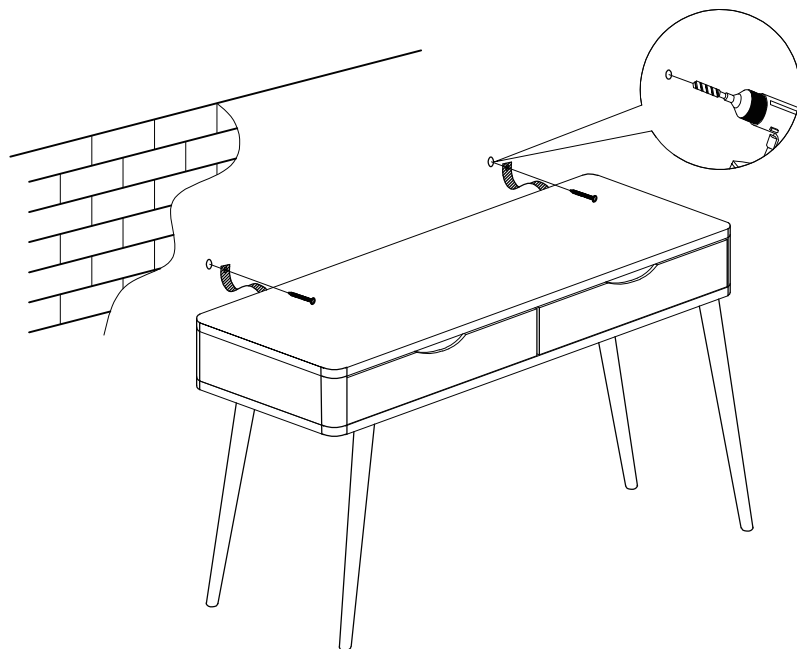


25



26





EN



Return / Damage Claim Instructions

- ⚠ **DO NOT discard the box / original packaging.**
In case a return is required, the item must be returned in original box. Without this your return will not be accepted.
- ⚠ **Take a photo of the box markings.**
A photo of the markings (text) on the side of the box is required in case a part is needed for replacement. This helps our staff identify your product number to ensure you receive the correct parts.
- ⚠ **Take a photo of the damaged part (if applicable).**
A photo of the damage is always required to file a claim and get your replacement or refund processed quickly. Please make sure you have the box even if it is damaged.
- ⚠ **Send us an email with the images requested.**
Email us directly from marketplace where your item was purchased with the attached images and a description of your claim.

FR



Instructions De Retour / Réclamation De Dommages

- ⚠ **NE PAS jeter la boîte/l'emballage d'origine.**
Dans le cas où un retour est requis, l'article doit être retourné dans sa boîte d'origine. Sans cela, votre retour ne sera pas accepté.
- ⚠ **Prenez une photo des marquages de la boîte.**
Une photo des marquages (texte) sur le côté de la boîte est requise au cas où une pièce serait nécessaire pour le remplacement. Cela aide notre personnel à identifier votre numéro de produit pour s'assurer que vous recevez les bonnes pièces.
- ⚠ **Prenez une photo des dommages (le cas échéant).**
Une photo des dommages est toujours requise pour déposer une réclamation et obtenir rapidement votre remplacement ou votre remboursement. Assurez-vous d'avoir la boîte même si elle est endommagée.
- ⚠ **Envoyez-nous un e-mail avec les images demandées.**
Envoyez-nous un e-mail directement depuis le marché où votre article a été acheté avec les images ci-jointes et une description de votre réclamation.