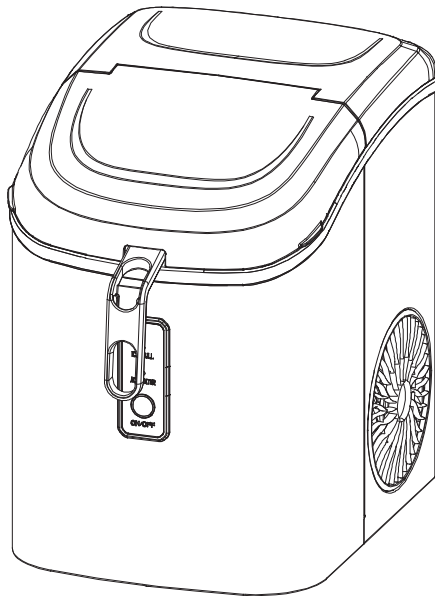


**INSIGNIA™**

# Countertop Nugget Ice Maker

**NS-IMNSS6**



Before using your new product, please read these instructions to prevent any damage.

## Contents

Introduction .....	2
Important Safety Instructions .....	3
Features .....	5
Package contents .....	5
Product overview .....	5
Control panel display .....	6
Setting up your ice maker .....	6
Before using your ice maker .....	6
Finding a suitable location .....	6
Assembling your ice maker .....	7
Providing a proper power supply .....	7
Using your ice maker .....	8
Making ice .....	8
Removing ice .....	9
Cleaning your ice maker .....	9
Routine cleaning - weekly .....	10
Periodic, thorough cleaning - monthly .....	11
Optional cleaning to remove mineral deposits - as needed .....	13
Troubleshooting .....	14
Specifications .....	15
ONE-YEAR LIMITED WARRANTY .....	16

## Introduction

Congratulations on your purchase of a high-quality Insignia product. Your NS-IMNSS6 represents the state of the art in ice maker design and is designed for reliable and trouble-free performance.

# Important Safety Instructions

## Read all instructions before use.

## Keep these instructions.

This appliance is intended to be used in household and similar applications such as:

- staff kitchen areas in shops, offices and other working environments;
- farm houses and by clients in hotels, motels and other residential type environments;
- bed and breakfast type environments;
- catering and similar non-retail applications.




This is the safety alert symbol.

All safety messages will follow the safety alert symbol and the words “DANGER” or “WARNING”.

These words mean:

**You can be killed or seriously injured if you don’t immediately follow these instructions.**

All safety messages will tell you what the potential hazard is, how to reduce the chance of injury, and what can happen if the instructions are not followed.

 <b>WARNING</b>
<ul style="list-style-type: none"> <li>• Do not locate multiple portable socket-outlets or portable power supplies at the rear of the appliance.</li> <li>• When positioning the appliance, ensure that the supply cord is not trapped or damaged.</li> <li>• Do not operate this appliance with a damaged cord. If the supply cord is damaged, it must be replaced by the manufacturer or its service agent or a similarly qualified person in order to avoid a hazard.</li> <li>• This ice maker must be positioned so that the plug is accessible.</li> <li>• Connect to properly grounded outlets only. This appliance must be earthed.</li> <li>• Do not run the power cord over carpeting or other heat insulators.</li> <li>• Do not cover the cord. Keep cord away from traffic areas, and do not submerge in water. We do not recommend the use of an extension cord, as it may overheat and become a risk of fire. If you must use an extension cord, use No.14AWG minimum size and rated no less than 1875 watts.</li> <li>• Unplug your ice maker before cleaning or making any repairs or servicing.</li> </ul>

 **WARNING**

- Children should be supervised to ensure that they do not play with the appliance.
- This appliance is not intended for use by persons (including children) with reduced physical, sensory, or mental capabilities, or lack of experience and knowledge, unless they have been given supervision or instruction concerning use of the appliance by a person responsible for their safety.
- Do not use your ice maker outdoors. Place your ice maker away from direct sunlight and make sure that there is at least 4 in. (10.15 cm) of space between the back of your unit and wall. Keep a minimum distance of 4 in. (10.15 cm) on each side of your unit free.
- Do not use other liquid to make the ice cube other than water.
- Do not clean your ice maker with flammable fluids. The fumes can create a fire hazard or explosion.
- Do Not Use Electrical Appliances Inside the Food Storage Compartments Of The Appliance, Unless They Are of The Type Recommended By The Manufacturer.
- Do not tip over.
- If your ice maker is brought in from outside in wintertime, give it a few hours to warm up to room temperature before plugging it in.
- Keep ventilation openings, in the appliance enclosure or in the built-in structure, clear of obstruction.
- Do not damage the refrigerant circuit.

 **DANGER: Risk of fire or explosion**

- Flammable refrigerant used. Do not use mechanical devices to defrost refrigerator.
- Do not puncture refrigerant tubing.
- Flammable refrigerant used. To be repaired only by trained service personnel. Use only manufacturer authorized service parts. Any repair equipment used must be designed for flammable refrigerants. Follow all manufacturer repair instructions.

 **CAUTION**

- Your ice maker should be installed in accordance with the safety standard for Refrigeration Systems, ASHRAE15. Your ice maker shall not be installed in corridors or hallways of public buildings.
- If the unit needs to be repaired, all parts must be replaced with like components and servicing shall be done by factory authorized service personnel, so as to minimize the risk of possible ignition due to incorrect parts or improper service.
- Due to puncture of refrigerant tubing; Follow handling instructions carefully.
- Dispose of refrigerator properly in accordance with the applicable federal or local regulations. Flammable refrigerant used.
- Flammable refrigerant used. The refrigeration system is under high pressure. Do not tamper with it. Contact qualified service personal before disposal.

## Preparing your ice maker for use

### IMPORTANT:

The wires in this appliance are colored in accordance with the following code:

Green or Green with a strip of yellow:	Grounding
White:	Neutral
Black:	Live

To avoid a hazard due to instability of the appliance, it must be placed on an even or flat surface.

## Features

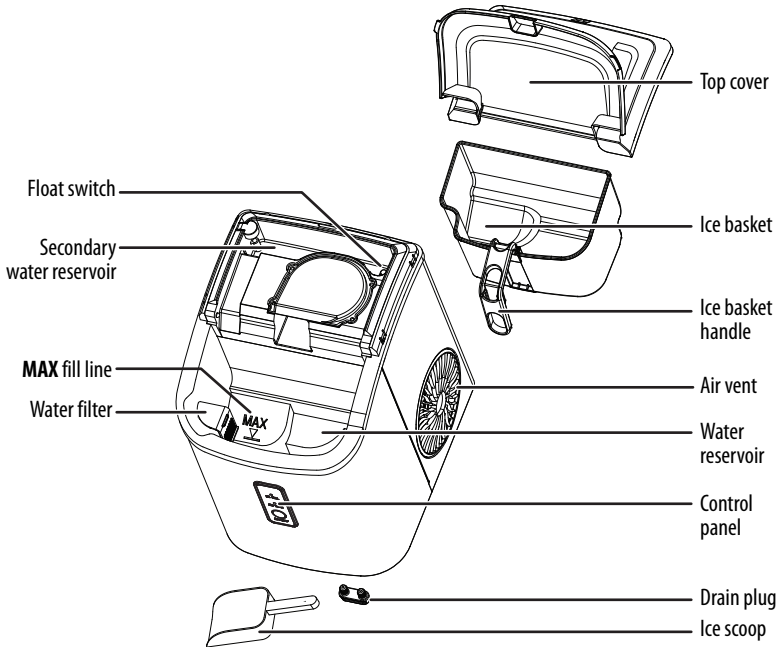
- Storage basket holds up to 1.65 lbs. (.7 kg) of ice at a time
- Makes up to 24 lbs. (10.89 kg) daily so you always have ice on hand\*
- Small, nugget-shaped ice adds a soft, chewable texture to your drink
- Prevents overfilling with auto shut-off
- Water recycling system with .29 gal. (1.1 L) reservoir reduces waste
- Stainless steel resists fingerprints and is easy to clean

\* Can be affected by water and environmental temperatures

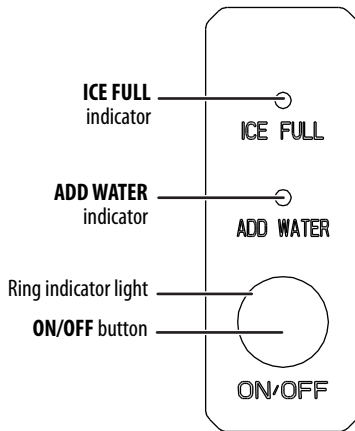
## Package contents

- Countertop Nugget Ice Maker
- Ice scoop
- Ice basket with handle
- Drain plug
- *User Guide*

## Product overview



## Control panel display

**Notes:**

- When your ice maker is full, it will stop making ice automatically.
- If you press the **ON/OFF** button during the ice making cycle, it will stop making ice and go to standby.
- To turn off your ice maker you must unplug it.

## Setting up your ice maker

### Before using your ice maker

**⚠ WARNING**

Before plugging in your ice maker, wait one hour for the refrigerant fluid to settle.

- 1 Remove the exterior and interior packing.
- 2 Remove all tape and take out the accessory parts from the unit (including the ice basket). If any parts are missing, contact customer service.
- 3 Clean the interior, exterior, and ice basket with diluted detergent, warm water, and a soft cloth.
- 4 Use water to rinse the inside parts, ice basket, and exterior, and drain the water by unplugging the drain plug on the front bottom side.
- 5 Dry the interior, exterior, and ice basket with a clean soft cloth.
- 6 Replace the ice basket.

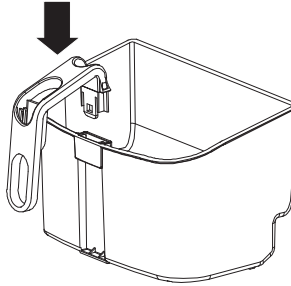
### Finding a suitable location

- This ice maker is designed to be free standing only, and should not be recessed or built-in.
- Place your ice maker on a counter top that is strong enough to support it when it is fully loaded.

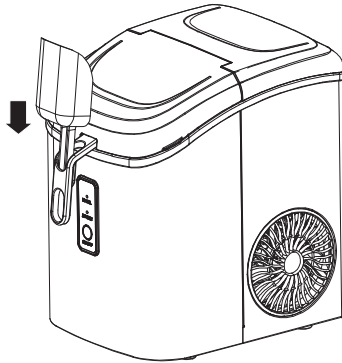
- Allow 6 in. (15 cm) of space between the back and sides of your ice maker and any surrounding walls to allow for proper air ventilation.
- Place your ice maker away from direct sunlight and sources of heat, such as a stove, heater, or radiator. Direct sunlight may affect the acrylic coating and heat sources may increase electrical consumption. Extremely cold temperatures may also prevent your ice maker from performing properly.
- The power plug must be accessible.

### Assembling your ice maker

- 1 Insert the handle into the ice basket as shown below.



- 2 The ice scoop can be placed in the handle for storage.



### Providing a proper power supply

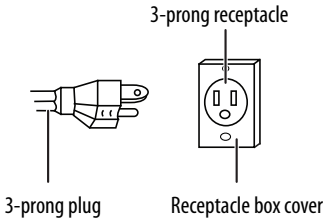
#### **WARNING**

Improper use of the grounded plug can result in the risk of electrical shock. If the power cord is damaged please call our customer service.

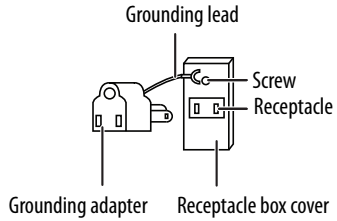
- This appliance requires a standard 110 -120V AC at 60Hz electrical outlet with a good ground.
- This unit should be properly grounded for your safety. The power cord of this appliance is equipped with a grounding plug which mates with standard grounding wall outlets to minimize the possibility of electric shock.

- Plug your appliance into an exclusive, properly installed, grounded wall outlet. Do not, under any circumstances, damage the ground blade of the plug. Any questions concerning power and/or grounding should be directed toward a certified electrician.

Using a 3-prong plug and outlet



Using a grounding adapter



**Notes:**

- Your ice maker should always be plugged into its own individual electrical outlet which has a voltage rating that matches the rating plate.
- Never unplug your ice maker by pulling on the power cord. Always grip the plug firmly and pull straight out from the outlet.

## Using your ice maker

### Making ice

**CAUTION**

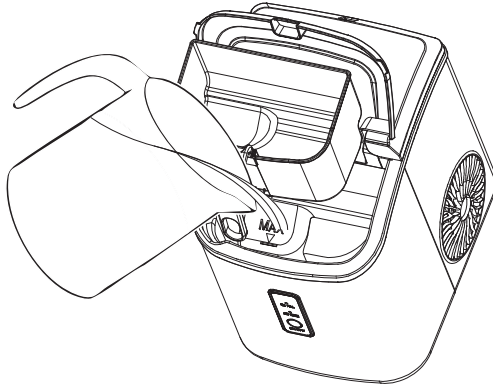
Change water in the water reservoir every 24 hours to make sure that it is fresh. If the unit isn't to be used for an extended period, drain the water and dry the water reservoir.

- 1 Make sure the water drain plug has been inserted into the bottom of your ice maker, otherwise your ice maker will not work properly.
- 2 Open the lid and remove the ice basket from your ice maker.

- Fill the water reservoir with tap (drinking) water to the **MAX** line. It holds .29 gal (1.1 L) of water.

**⚠ WARNING**

Fill the reservoir with potable (drinking) water only.



- Replace the ice basket into your ice maker.
- Plug in your ice maker. The ring indicator light turns red.
- Press the **ON/OFF** button. The ring indicator light blinks white and your ice maker begins making ice.

**Note:** If your ice maker runs out of water, it stops automatically and the **ADD WATER** indicator turns on. Add water to continue making ice.

- To stop making ice, press the **ON/OFF** button again and your ice maker stops making ice. If you don't stop your ice maker, it will automatically stop when the ice basket is full and the **ICE FULL** indicator turns on.

## Removing ice

- Open the top cover of your ice maker and remove the ice basket to remove the ice. You can also remove the ice by hand with the ice scoop.
- If the ice basket is full, you can remove it to dump the ice into a container and store it in your freezer. To remove the ice basket, lift it out of your ice maker.

## Cleaning your ice maker

Your ice maker is designed for year-round use with only minimal cleaning and maintenance.

**⚠ CAUTION**

- It is important to clean your ice maker before using it for the first time, or if you haven't used it in a long time.
- To prevent damage to the finish, do not use gasoline, benzene, thinner, or other similar solvents, or abrasive cleaners to clean the exterior.

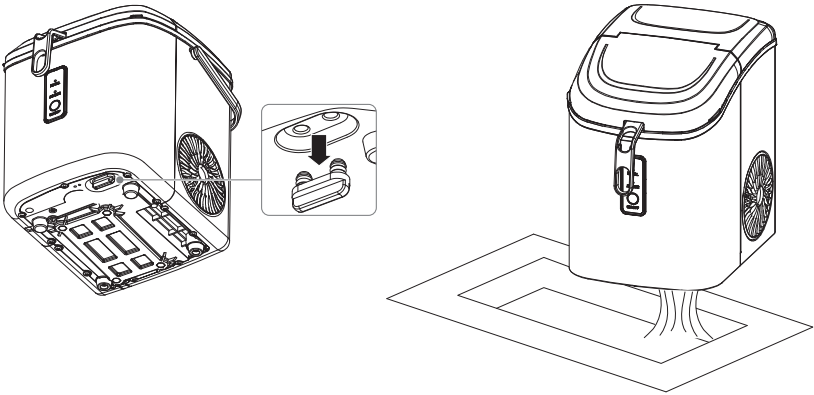
## Routine cleaning - weekly

If you use your ice maker continually, we suggest that you routinely clean it every week.

- 1 Make sure that the water drain plug has been inserted into the bottom of your ice maker, otherwise it will not work properly.
- 2 Move your ice maker to a countertop adjacent to a sink, make sure that the appliance is steady and level.
- 3 Add water up to the **MAX** line.
- 4 Press the **ON/OFF** button for five seconds. The ring indicator light blinks white. Your ice maker will run the automatic cleaning cycle for 15 minutes, then automatically stop.

**Note:** If you press the **ON/OFF** button again during the cleaning cycle, it will stop the cycle immediately.

- 5 Remove the drain plug from the bottom of your ice maker. The dirty water from the automatic cleaning cycle will drain into the sink.

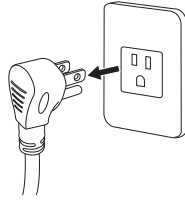


- 6 Allow your ice maker to drain completely, then reinsert the drain plug.
- 7 Clean the inside, outside, and ice basket of your ice maker with a mild detergent solution, warm water, and a soft cloth.
- 8 Dry the interior, exterior, and ice basket with a clean, soft cloth.
- 9 Replace the ice basket.
- 10 When the machine is not to be used for a long time, drain water completely and dry the interior.

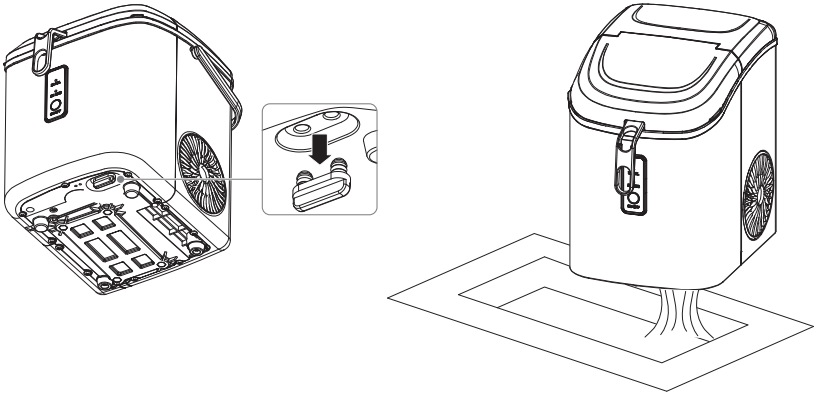
## Periodic, thorough cleaning - monthly

We suggest that you thoroughly clean your ice maker every month.

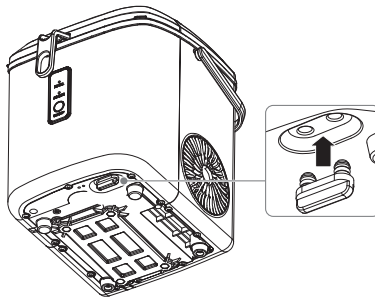
- 1 Unplug your ice maker.



- 2 Move your ice maker to a countertop adjacent to a sink, make sure that the appliance is steady and level.
- 3 Remove the drain plug from the bottom of your ice maker. The water will drain into the sink.

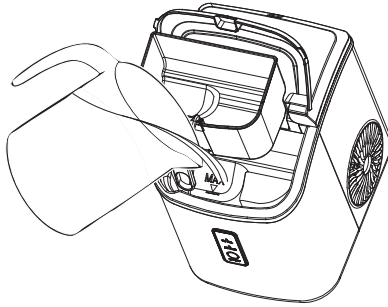


- 4 Replace the drain plug.

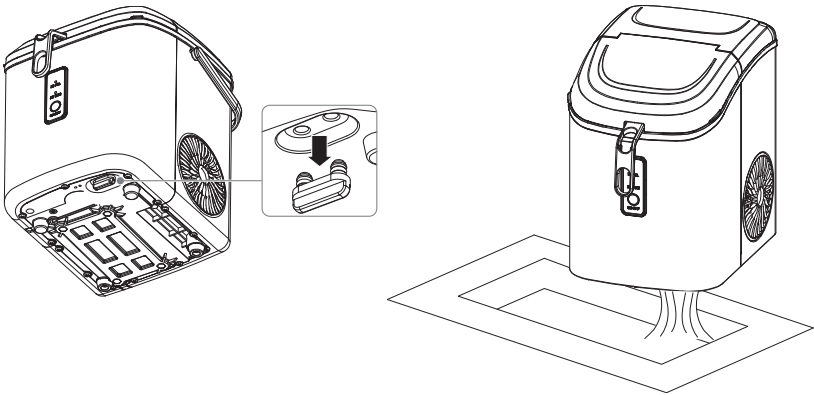


- 5 Mix a solution of five parts water to one part white vinegar.

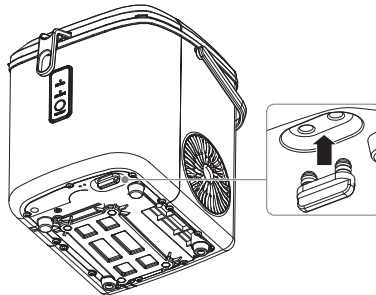
- 6 Pour the solution into your ice maker up to the **MAX** line, then plug it in.



- 7 Press and hold the **ON/OFF** button for five seconds. The ring indicator light blinks and the cleaning process starts and runs for 15 minutes.
- 8 Remove the drain plug from the bottom of your ice maker. The water will drain into the sink.



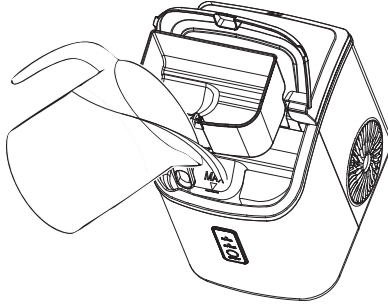
- 9 Replace the drain plug.



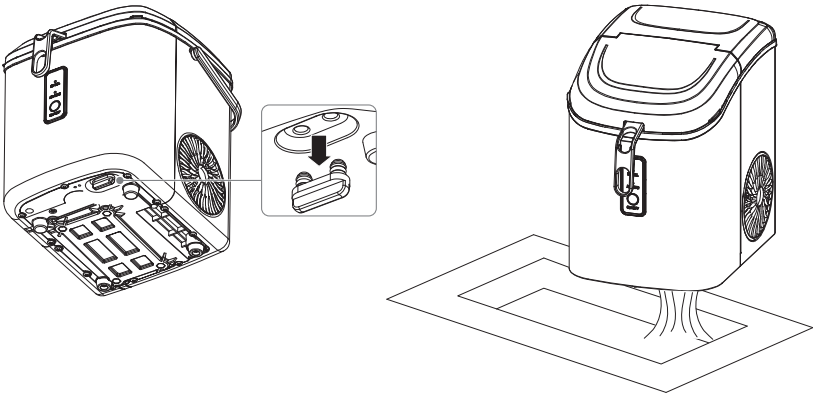
- 10 Repeat steps 7 through 9 with clean water for two more cycles.
- 11 Fill the unit with fresh water, then press the **ON/OFF** button. Your ice maker begins making ice.

### Optional cleaning to remove mineral deposits - as needed

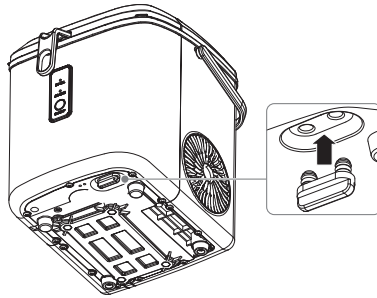
- 1 Complete steps 1 through 4 of Periodic, thorough cleaning - monthly on page 11.
- 2 Pour diluted white vinegar (five parts water to one part white vinegar) into your ice maker up to the **MAX** line, then plug it in.



- 3 Press the **ON/OFF** button for five seconds to start the clean cycle and let it run for five minutes.
- 4 Press the **ON/OFF** button again to stop the cleaning cycle, then unplug it and leave the white vinegar in the unit for at least 12 hours.
- 5 Remove the drain plug from the bottom of your ice maker. The solution will drain into the sink.



- 6 Replace the drain plug.



- 7 Repeat steps 3 through 6 with clean water, draining immediately each time.
- 8 Fill the unit with fresh water, then press the **ON/OFF** button. Your ice maker begins making ice.

## Troubleshooting

PROBLEM	POSSIBLE CAUSE	POSSIBLE SOLUTION
The <b>ADD WATER</b> indicator lights	No water in the reservoir.	Turn off your ice maker, remove the ice basket, add water to the <b>MAX</b> line in the reservoir, replace the basket, then press the <b>ON/OFF</b> button to begin making ice.
The <b>ICE FULL</b> indicator light turns on	Too much ice in the basket.	Remove some ice from the basket.
	With no ice in the basket.	Something is blocking the infrared light in the ice basket. Remove the obstacle from the ice basket or clean the inside of the basket.  Press the <b>ON/OFF</b> button for five seconds (to override). Makes ice for 50 minutes.
The ring indicator light blinks red	The ambient temperature or the water temperature in the inner tank is too high.	Your ice maker should be operated below 90° F (32° C) ambient temperature. Pour colder water into the tank.
	Refrigerant liquid leakage.	Press the <b>ON/OFF</b> button twice to restart the ice making process. If the problem does not resolve itself, have your ice maker serviced by a qualified technician.
	The motor cover is broken.	
	A pipe in the cooling system is broken.	
Makes ice too slowly	The hot air outlet is blocked.	Check the hot air outlet and remove any blockage.
	The water temperature in the inner tank is too high.	The water temperature must be between 45° and 90° F (7° and 32° C)
	The refrigeration system has a malfunction.	Have your ice maker serviced by a qualified technician.

PROBLEM	POSSIBLE CAUSE	POSSIBLE SOLUTION
The ice maker is leaking water	The drain plug is loose or missing.	Replace the drain plug into the drain line.
	A pipe joint in your ice maker may be loose.	It is recommended that you have your ice maker serviced by a qualified technician.
	The seal has reached the end of its service life.	It is recommended that you have your ice maker serviced by a qualified technician.
The ice has a bad taste or there is an odor	Various	<ul style="list-style-type: none"> <li>• Make a few loads of ice after unpacking and discard the ice</li> <li>• Clean your ice maker</li> <li>• Use filtered water</li> </ul>
The ice maker is plugged in but won't turn on	Check the electrical outlet to make sure it is on.	Reset the circuit breaker or replace the fuse in your home's power panel.
The ice making cycle is normal, but no ice is made	The room temperature or water temperature may be too high.	The room temperature should be 50° ~ 105° F (10° ~ 40° C). The water temperature should be 45° ~ 90° F (7° ~ 32° C).
	The refrigerant liquid may have leaked.	It is recommended that you have your ice maker serviced by a qualified technician.
	A pipe in the cooling system may be blocked.	It is recommended that you have your ice maker serviced by a qualified technician.

## Specifications

Dimensions (HxWxD)	12.68 × 8.66 × 11.3 in. (32.2 × 22 × 28.7 cm)
Weight	19.4 lbs. (8.8 kg)
Power requirements	115V AC at 60Hz
Current	2.7A
Refrigerant	R600a / 16 g
Foaming agent	C <sub>5</sub> H <sub>10</sub>
Protection type	Class 1 (includes two levels of protection: the basic insulation and the ground connection)
Ice making rate	77° F Ambient temp/50° F Water temp: 34 lbs./24H 90° F Ambient temp/70° F Water temp (DOE standard): 24 lbs./24H

# ONE-YEAR LIMITED WARRANTY

Best Buy, or its Authorized Partner of Insignia branded products, warrants to you, the original purchaser of this new Insignia branded product ("Product"), that the Product shall be free of defects in the original manufacture of the material or workmanship for a period of one (1) year from the date of your purchase of the Product or the date of delivery (if later than the date of purchase) ("Warranty Period").

For this warranty to apply, your Product must be (i) purchased in the United States or Canada from a Best Buy branded retail store, online at [www.bestbuy.com](http://www.bestbuy.com) or [www.bestbuy.ca](http://www.bestbuy.ca), or from Best Buy's Authorized Partner, and (ii) packaged or sold with this warranty statement.

The term "Best Buy", as used in this warranty, refers to Best Buy branded retail stores, [www.bestbuy.com](http://www.bestbuy.com), [www.bestbuy.ca](http://www.bestbuy.ca), and Best Buy's Authorized Partner.

Because Insignia cannot control the quality of products sold by unauthorized sellers, this warranty applies only to Products that were purchased from Best Buy or an Insignia Authorized Partner, unless otherwise prohibited by law. Insignia reserves the right to reject warranty claims for Products purchased from unauthorized sellers, including unauthorized websites.

REPAIR OR REPLACEMENT, AS PROVIDED UNDER THIS WARRANTY, IS YOUR EXCLUSIVE REMEDY FOR BREACH OF WARRANTY. INSIGNIA SHALL NOT BE LIABLE FOR ANY INCIDENTAL OR CONSEQUENTIAL DAMAGES FOR THE BREACH OF ANY EXPRESSED OR IMPLIED WARRANTY ON THIS PRODUCT, INCLUDING, BUT NOT LIMITED TO, LOST DATA, LOSS OF USE OF YOUR PRODUCT, LOST BUSINESS, OR LOST PROFITS. INSIGNIA PRODUCTS MAKES NO OTHER EXPRESS WARRANTIES WITH RESPECT TO THE PRODUCT. ALL EXPRESSED AND IMPLIED WARRANTIES FOR THE PRODUCT, INCLUDING BUT NOT LIMITED TO ANY IMPLIED WARRANTIES OF AND CONDITIONS OF MERCHANTABILITY AND FITNESS FOR A PARTICULAR PURPOSE, ARE LIMITED IN DURATION TO THE WARRANTY PERIOD SET FORTH ABOVE AND NO WARRANTIES, WHETHER EXPRESSED OR IMPLIED, WILL APPLY AFTER THE WARRANTY PERIOD. SOME STATES, PROVINCES, AND JURISDICTIONS DO NOT ALLOW LIMITATIONS ON (i) HOW LONG AN IMPLIED WARRANTY LASTS, (ii) EXCLUSION OR LIMITATION OF INCIDENTAL OR CONSEQUENTIAL DAMAGES, or (iii) LIMITATION OF INCIDENTAL OR CONSEQUENTIAL DAMAGES, SO THE ABOVE LIMITATIONS OR EXCLUSIONS MAY NOT APPLY TO YOU. THIS WARRANTY GIVES YOU SPECIFIC LEGAL RIGHTS, AND YOU MAY ALSO HAVE OTHER RIGHTS, WHICH VARY FROM STATE TO STATE OR PROVINCE TO PROVINCE.

## How long does the coverage last?

The Warranty Period lasts for 1 year (365 days) from the date you purchased the Product or the date of delivery (if later than the date of purchase). Your purchase date is printed on the receipt you received with the Product. In the event that Authorized Partner ceases to sell the covered Insignia branded product, this warranty shall terminate for that product and there shall be no repair or replacement of the Product.

## What does this warranty cover?

During the Warranty Period, if the original manufacture of the material or workmanship of the Product is determined to be defective by an authorized Insignia repair center or store personnel, Insignia will (at its sole option): (1) repair the Product with new or rebuilt parts; or (2) replace the Product at no charge with new or rebuilt comparable products or parts. Products and parts replaced under this warranty become the property of Insignia and are not returned to you. If service of Products or parts are required after the Warranty Period expires, you must pay all labor and parts charges. This warranty lasts as long as you own your Insignia Product during the Warranty Period. Warranty coverage terminates if you sell or otherwise transfer the Product.

## How to obtain warranty service?

If you purchased the Product at a Best Buy retail store location or from a Best Buy online website ([www.bestbuy.com](http://www.bestbuy.com) or [www.bestbuy.ca](http://www.bestbuy.ca)), please take your original receipt and the Product to any Best Buy store. Make sure that you place the Product in its original packaging or packaging that provides the same amount of protection as the original packaging. If you purchased your Product from an Authorized Partner, call Insignia at 1-877-467-4289.

To obtain warranty service, in the United States and Canada call 1-877-467-4289. Call agents may diagnose and correct the issue over the phone.

If you purchased the Product from an Authorized Partner other than Best Buy, please call 1-888-BESTBUY in the United States or 1-866-BESTBUY in Canada. You will be asked to provide proof of purchase and to return your Product to Best Buy. Make sure that you put the Product in its original packaging or packaging that provides the same amount of protection as the original packaging.

## Where is the warranty valid?

This warranty is valid only in the United States and Canada to the original purchaser of the product from an Authorized Partner, in the country where the original purchase was made.

## What does the warranty not cover?

This warranty does not cover:

- Food, beverage, and or medicine loss/spoilage.
- Damage to other products caused by a power surge or other similar issue while connected to the Product.
- Customer instruction/education.
- Installation.
- Set up adjustments.
- Cosmetic damage.
- Damage due to weather, lightning, and other acts of God, such as power surges.
- Accidental damage.
- Misuse.
- Abuse.
- Negligence.
- Commercial purposes/use, including but not limited to use in a place of business or in communal areas of a multiple dwelling condominium or apartment complex, or otherwise used in a place of other than a private home.
- Modification of any part of the Product, including the antenna.
- Display panel damaged by static (non-moving) images applied for lengthy periods (burn-in).
- Damage due to incorrect operation or maintenance.
- Connection to an incorrect voltage or power supply.
- Damage due to attempted repair by any person not authorized by Insignia to service the Product.
- Products sold "as is" or "with all faults".
- Consumables, including but not limited to batteries (i.e. AA, AAA, C etc.).
- Products where the factory applied serial number has been altered or removed.
- Loss or Theft of this product or any part of the product.
- Display panels containing up to three (3) pixel failures (dots that are dark or incorrectly illuminated) grouped in an area smaller than one tenth (1/10) of the display size or up to five (5) pixel failures throughout the display. (Pixel based displays may contain a limited number of pixels that may not function normally.)
- Failures or Damage caused by any contact including but not limited to liquids, gels or pastes.

Contact Insignia:

1-877-467-4289

[www.insigniaproducts.com](http://www.insigniaproducts.com)

INSIGNIA is a trademark of Best Buy and its affiliated companies.

\*Distributed by Best Buy Purchasing, LLC

7601 Penn Ave South, Richfield, MN 55423 U.S.A

©2025 Best Buy. All rights reserved.

INSIGNIA™

**[www.insigniaproducts.com](http://www.insigniaproducts.com)**

1-877-467-4289 (U.S. and Canada)

INSIGNIA is a trademark of Best Buy and its affiliated companies.

Distributed by Best Buy Purchasing, LLC

7601 Penn Ave South, Richfield, MN 55423 U.S.A.

©2025 Best Buy. All rights reserved.

V3 ENGLISH  
25-0306