

Lenovo Yoga 7a 2-in-1 (14",11)

Ultimate Flexibility, Limitless Creativity

Create anywhere with the Yoga 7a 2-in-1. Its 360° convertible design, touchscreen, and optional Yoga Pen Gen 2 let you work seamlessly in any scenario. Powered by AMD Ryzen™ AI 400 processors, this Copilot+ PC manages power efficiently without sacrificing an ounce of performance. The 14" PureSight Pro OLED display, with 120Hz refresh and the vibrant color of Dolby Vision, brings your ideas to life.



Create Your Way with 360° Flexibility

A convertible design with five distinct modes—Laptop, Tablet, Tent, Display, and the new Canvas Mode—offers unmatched flexibility for creativity, productivity, and entertainment, adapting to whatever users need in the moment.



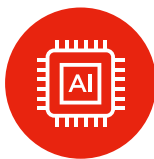
Responsiveness at the Speed of Thought

AES 3.0 with 8,192 pressure levels delivers precise input from soft shading to bold strokes, while ultra-low latency and 9+ mm hover support ensure fast, natural pen response. Paired with a vibrant, responsive touchscreen that provides clear visuals and tactile feedback, every interaction—sketching, writing, or navigating—feels fluid and intuitive, turning the display into a true creative canvas.



Create and Stream in Stunning OLED Clarity

Ready for epic visuals? The 14" PureSight Pro OLED display delivers up to 2.8K resolution with stunning, true-to-life colors—100% sRGB and P3—enhanced by Dolby Vision, a 120Hz refresh rate, and up to 1000 nits peak HDR brightness



AI-Powered Performance. All-Day Creativity.

With AMD Ryzen™ AI 400 Series processors, enjoy top-tier performance, smart AI tools, and portability that powers your creativity.



Lenovo Yoga 7a 2-in-1 (14", 11)

SPECIFICATIONS

YOGA 7 2-IN-1 14AGP11

PERFORMANCE

Processor

AMD Ryzen™ AI 7 445
AMD Ryzen™ AI 5 435
AMD Ryzen™ AI 5 430

Graphics

UMA

Operating System

Windows 11 Home
Windows 11 Pro

Memory

LPDDR5X : 16 GB / 24GB / 32 GB,
8000MHz Dual Channel

Storage

PCIe SSD Gen 4 M.2: 512GB/1TB/2TB

Camera

5MP IR Camera
Camera Shutter
4 X 3D noise-canceling mics

Audio

4 x 2W Speakers
With Dolby Atmos® Audio

Battery¹

70Whr
Rapid Charge Express: 15 minutes @ 3 Hours
2.8K OLED
Mobile Mark 30@250 nits: 15 Hours
Local 1080P Video@ 150 nits: 21 Hours
WUXGA OLED
Mobile Mark 30@250 nits: 15 Hours
Local 1080P Video@ 150 nits: 26 Hours

DESIGN

Display

14" 2.8K (2880 x 1800) 120Hz VRR, 16:10,
PureSight Pro OLED, 1100 nits peak
brightness (HDR), 100% sRGB, 100% DCI-
P3, 99% Adobe RGB, Delta E < 1, Dolby
Vision®, VESA Certified Display HDR True
Black 1000, TÜV Low Blue Light
Certification, Eyesafe® Certification, Glass,
Touchscreen

14" WUXGA (1920 x 1200) 60 Hz, 16:10,
WUXGA OLED, 600 nits peak brightness
(HDR), 100% sRGB, 100% DCI-P3, Dolby
Vision® VESA Certified Display HDR True Bl
ack 500, TÜV Low Blue Light Certification,
Glass, Touchscreen

4-Side Narrow Bezel (89.52% AAR)

L/R: 2.4mm
T: 5.6mm
B: 13.3mm

Dimensions (W x D x H)²

(mm) : 316 x 228 x as thin as 15.4mm
(inches) : 12.44" x 8.98" x as thin as 0.61"

Weight

Starting at 1.38kg

Hinge

360°

CONNECTIVITY

WLAN

Wi-Fi 7

Bluetooth³

Bluetooth® 5.4

I/O (Input/Output) Ports & Function Key

Left:

- 1 x USB-C® 3.2, up to 10Gbps³
- 1 x HDMI™ 2.1, up to 4K/60Hz
- 1 x Audio Combo Jack

Right:

- 1 x USB-C® 3.2, up to 10Gbps³
- 1 x USB-A (USB 5Gbps), Always On
- 1 x Micro SD Card reader

NOTEABLE MENTIONS

- MIL-STD-810H
- Carbon Neutral Certified
- EPEAT® Gold-registered⁴
- Energy Star 9.0
- 100% Plastic Free Packaging

PRELOADED SOFTWARE

- Windows 11 Home/Pro
- Lenovo Vantage
- Microsoft 365 Trial
- McAfee® LiveSafe™
- Dolby® Access (Dolby Vision® and Atmos®)
- Smart Note
- Smart Connect

¹ All battery life claims are approximate and based on two methods of testing: continuous Local Video Playback and Web Browsing @ 150 nits brightness on the latest update of Windows 11. Actual battery life will vary and depends on many factors such as product configuration and usage, software use, wireless functionality, power management settings, and screen brightness. The maximum capacity of the battery will decrease with time and use.

² Height is calculated using T2 measurements and should be considered 'as thin as'.

³ The actual transfer speed of the USB 3.2 will vary and, depending on many factors, such as the processing capability of host and peripheral devices, file attributes and other factors related to system configuration and your operating environments, may be slower than a speed of 20 Gbit/s.

⁴ EPEAT®-registered where applicable - see www.epeat.net for registration status by country.

LENOVO SERVICES

Lenovo Premium Care Plus

Lenovo Premium Care Plus is the ultimate PC support experience with you as our priority 24/7. Enjoy personalized hardware and software support from a global network of elite technicians, along with accidental damage protection, fast repairs with onsite support, extended battery warranty, data migration assistance, and smart performance solutions that optimize PC performance and security.

Lenovo Smart Performance

Smart Performance Services within Lenovo Vantage will keep your system running at optimum performance and proactively fix issues that affect PC performance, internet performance, remove malware, and improve device security.

Lenovo Accidental Damage Protection

Avoid the hassles of unexpected damage & repair costs. With coverage for drops, spills, electric surges, and broken LCD screens, accidental damage protection makes it easy to repair to your PCs and ensures your device is up and running fast.

Lenovo CO2 Offset Services

Offset the carbon emissions of your PC with Lenovo CO2 Offset Services - an easy and transparent solution to offset emissions across the average lifecycle of your device. These offsets are invested in UN-approved initiatives like renewable energy or ecological projects, thus contributing towards a more sustainable future.

Lenovo Sealed Battery Warranty

Long-lasting battery life is not just a feature but a necessity to help you stay productive and connected all day long. Protect your PC's sealed battery from degradation, enjoy hassle-free battery replacement service, and safeguard your PC from future battery failure with our Sealed Battery Warranty Service.

Lenovo Warranty Extensions (Up to 3 Years Duration)

Gain complete peace of mind by extending your base warranty to up to 3 years and minimize unexpected repair costs.

OPTIONS & ACCESSORIES



Lenovo Yoga Pen Gen 2 with Case



Lenovo Yoga Tote Sleeve



Lenovo Yoga Bluetooth Silent Mouse

McAfee® LiveSafe™

Register McAfee® to enjoy these benefits in your FREE 30-day trial.

- Award-winning Antivirus
- Password Manager
- Safe Web Browsing
- Multi-device Compatibility
- Identity Theft Protection
- Free Customer Support

* Example of Lenovo catalogue naming convention

Yoga 7 2-in-1 14AGP11
Sub-brand Form Factor Positioning Screen Size AMD Platform Code Generation

WWW.LENOVO.COM

Lenovo reserves the right to alter product offerings and specifications at any time, without notice. Lenovo makes every effort to ensure accuracy of all information but is not liable or responsible for any editorial, photographic or typographic errors. All images are for illustration purposes only. For full Lenovo product, service and warranty specifications visit www.lenovo.com. Lenovo makes no representations or warranties regarding third party products or services. **Trademarks:** The following are trademarks or registered trademarks of Lenovo: Lenovo, the Lenovo logo, ideapad, IdeaCentre, yoga and yoga home. Microsoft, Windows and Vista are registered trademarks of Microsoft Corporation. Intel, the Intel logo, Intel Inside, Intel Core, and Core Inside are trademarks of Intel Corporation in the U.S. and/or other countries. Other company, product and service names may be trademarks or service marks of others. Visit www.lenovo.com/lenovo/us/en/safecomp/ periodically for the latest information on safe and effective computing.
©2024 Lenovo. All rights reserved.



Lenovo