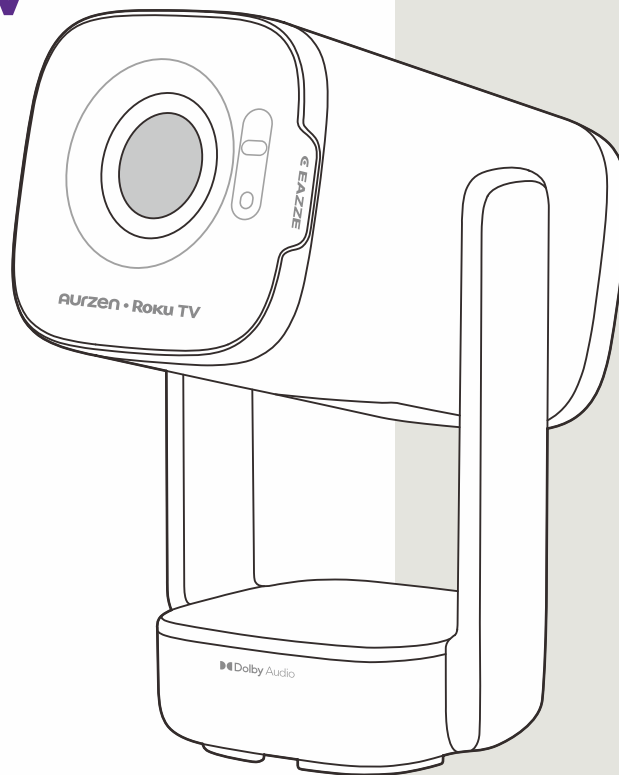


Aurzen • Roku TV

 Dolby Audio



EAZZE D1R air USER MANUAL

CONTENTS

TROUBLESHOOTING GUIDE	01
WHAT'S IN THE BOX	03
PRODUCT OVERVIEW	03
QUICK START	05
PROJECTOR CONNECTION AND INPUT SOURCE	11
Wi-Fi CONNECTION	13
SCREEN MIRRORING	14
BLUETOOTH CONNECTION	16
SETTINGS	18
PROJECTION DISTANCE AND SIZE	21
CONTROL BY ROKU MOBILE APP	22
SPECIFICATIONS	24

TROUBLESHOOTING GUIDE

1. How do I improve the image clarity?

- * **Auto Focus:** Move the projector up and down to trigger auto focus or trigger auto focus by going to **Home > Settings > Projector settings** and selecting **Start auto-focus**.
- * **Manual Focus:** Go to **Home > Settings > Projector settings > Image correction > Manual focus** and follow the on-screen instructions to sharpen the image until it becomes clear.

2. Couldn't complete auto-focus or auto-keystone?

- * Ensure that nothing is obstructing the lens or the sensor (located on the right side of the lens). Try adjusting the distance between the projector and the screen. If the issue persists, power off the projector, then turn it back on before attempting again.
Note: The automatic correction range is $\pm 15^\circ$ vertically and horizontally; beyond this range, manual adjustment is required.

3. What should I do if the image is not rectangular?

- * **Auto Keystone Correction:** Move the projector up and down to trigger auto keystone correction or trigger auto keystone correction by going to **Home > Settings > Projector settings** and selecting **Start auto-keystone**.
- * **Manual Keystone Correction:** Go to **Home > Settings > Projector settings > Image correction > Manual keystone** and follow the on-screen instructions to adjust the image using four-point correction.

4. How do I adjust the brightness?

- * When using HDMI or playing a video, you can adjust the projector's brightness. Press the * button on the remote control, then go to **Picture settings > Picture mode** to select **Vivid (high brightness)**, **Standard (medium brightness)**, or **Low power (low brightness)**. For the better brightness performance, you can adjust the color temperature by going to **Picture settings > Customize picture > Expert settings > Color temperature > Normal**.

5. How do I reduce the noise?

- * When using HDMI or playing a video, you can press the * button on the remote control, then go to **Picture settings > Picture mode** and select **Low Power** to reduce the projector noise. Please note that brightness may be slightly lower in Low Power mode.

6. How do I change the image size on my screen?

- * Consider moving the projector closer or further away from the screen to find the optimal image size for the screen. You can also adjust the image size by going to **Home > Settings > Projector settings > Image correction > Zoom**.

7. How to install the Remote Control Mobile App?

- * The free Roku app allows you to use your mobile device as a full functioning remote control with voice search & keypad.
 - ① Download the Roku app to your phone or tablet through Google Play™ or Apple App Store™.
 - ② Simply search for "Roku App" and choose the Roku app by Roku Inc.
 - ③ Follow the on-screen prompts and you're on your way!

8. Cannot connect to a wireless network (Wi-Fi)?

- * Select the correct wireless network name and verify the password entered (case sensitive).
- * Relocate the router from objects that interfere with performance (cordless phones, baby monitors, etc.)
- * Reboot the router by disconnecting the power for more than 2 minutes and reconnect.

9. Why doesn't the remote control work?

- * Make sure the remote points at the IR receiver directly.
- * Make sure you have installed two AAA batteries in the remote control.
- * Avoid mixing new batteries with old ones in the remote control as this can result in insufficient power supply and operational issues.

10. What should I do if the projector fails to power on or automatically shuts down?

- * Please check and ensure that the power cable is securely plugged into the power port to prevent any accidental disconnection or loosening when moving the projector.

11. Can I use a power bank or other power adapter to power the projector?

- * Yes. You can power the projector using a USB-C power bank or power adapter that supports USB-C Power Delivery (PD) with a minimum output of 65W, along with a PD-certified USB-C cable.

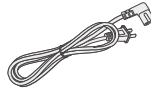
WHAT'S IN THE BOX



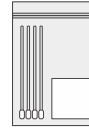
Aurzen Roku TV
Smart Projector



Remote
(Batteries Not Included)



Power Cable



Dust Cleaning Kit

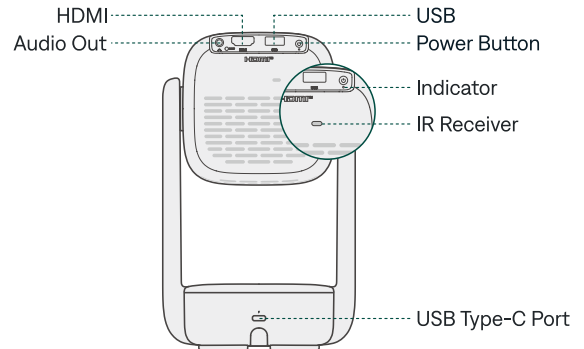
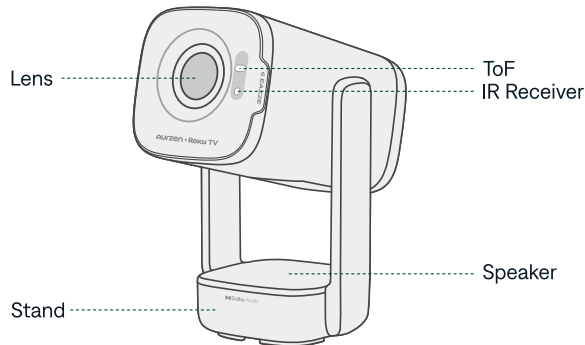


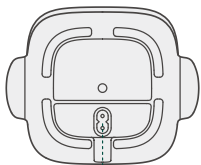
Quick Start Guide

A Roku account and internet connection are required for activation.

PROJECTOR OVERVIEW

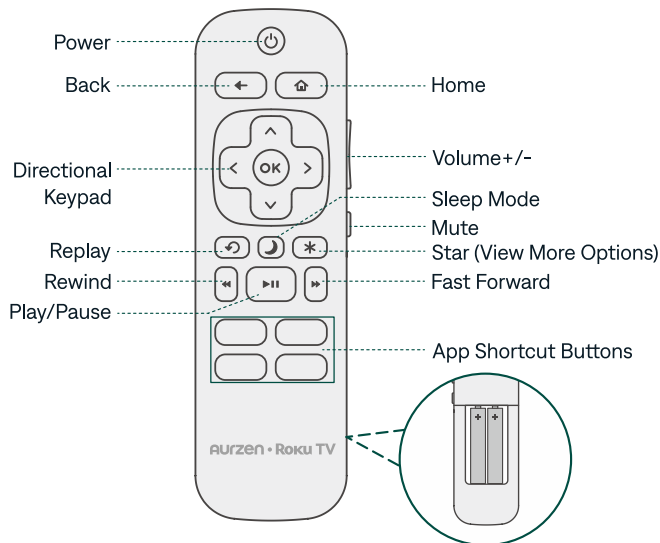
Projector





Power Input

Remote Control

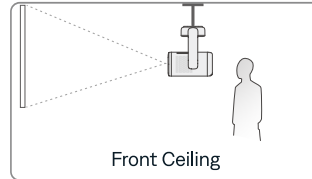
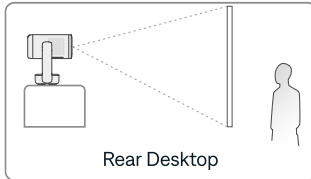
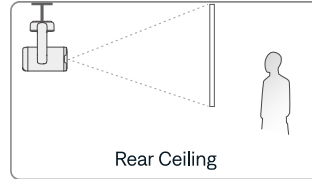
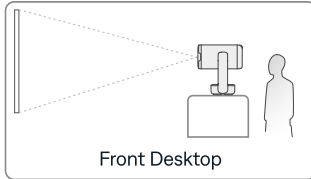


Tips:

1. Power your remote by inserting 2 AAA batteries (not included) carefully matching (+) and (-) indicated inside the battery compartment.
2. Always replace dead batteries with two new batteries from the same manufacturer and of the same kind. Never use damaged batteries. If your remote gets warm/hot during use, discontinue use and contact customer support immediately.

QUICK START

1. Projector Installation

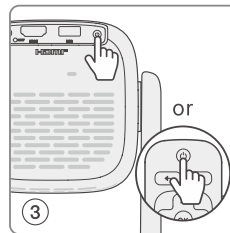
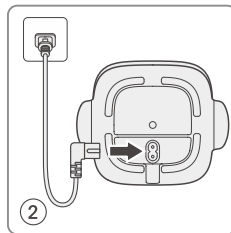
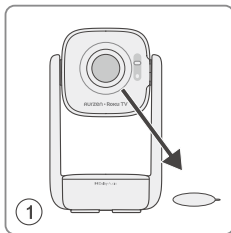


Tips:

* Select the appropriate projection orientation during the guided setup process or via **Home > Settings > Projector settings > Orientation**.

* Mounting Screw: 1/4" (not included).

2. Power On/Off



- ① Remove the protective film from the lens.
- ② Plug the power cable into an outlet.
- ③ Press the **Power Button** to turn the projector on.

3. Setup Wizard

Follow on-screen setup instructions to activate your projector.

- Choose your language, location, and projection orientation.
- Connect to Wi-Fi.

4. Activation

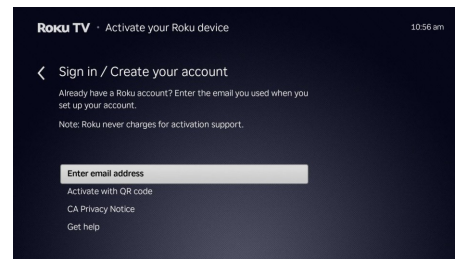
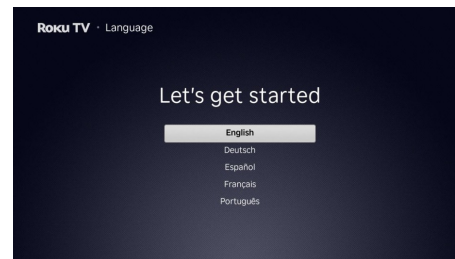
Activate your projector using one of the following methods:

Using email: Enter your email address when prompted. Then check your inbox for an activation email and follow the instructions to complete activation.

Using QR code: Scan the on-screen QR code to go to the indicated link and follow the instructions to complete activation.

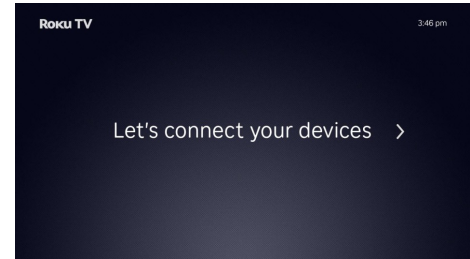
Tips:

- * A Roku account and internet connection are required for activation.
- * Roku never charges for activation.
- * You can rename the projector during the activation process.



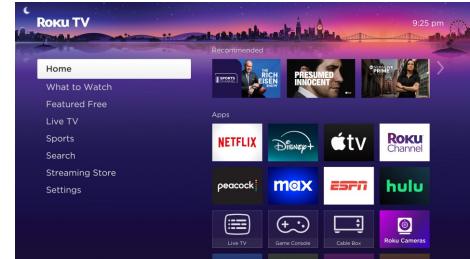
5. Device Connection

Follow the on-screen instructions to connect and set up external devices, such as a cable box, Blu-ray™ player, or game console. To skip this step, select **Do this later** when prompted.



6. Home Screen Setup

After completing the setup, the home screen will appear. Use the directional pad on the remote control to navigate between sections.



Note:

Resolution is based on Projector compatibility and varies by channel and content. Channels are subject to change, vary by region, and may require payment.

Tips:

- * Change the screen theme by going to **Settings > Theme**.
- * Hide or show items and options by going to **Settings > Home Screen**.
- * Find and add streaming apps from the **Streaming Store**. Newly added apps will appear on the home screen.
- * Arrange items (moving, removing, and more) by highlighting an item and pressing the **Star** * button on the remote control.

7. Image Adjustment

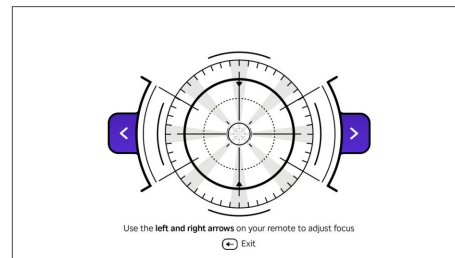
Focus

1. Auto-focus

The projector automatically adjusts image clarity when it detects shaking or rapid movement. You can also trigger auto-focus by going to **Home > Settings > Projector settings** and selecting **Start auto-focus**.

2. Electric/Manual Focus

For manual adjustment, go to **Home > Settings > Projector settings > Image correction > Manual focus** and follow the on-screen instructions to sharpen the image until it becomes clear.



Keystone Correction

1. Auto Keystone Correction

To activate the auto keystone feature, go to **Home > Settings > Projector settings** and select **Start auto-keystone**. The projector will automatically correct keystone distortion.

Note: The automatic correction range is $\pm 15^\circ$ vertically and horizontally; beyond this range, manual adjustment is required.

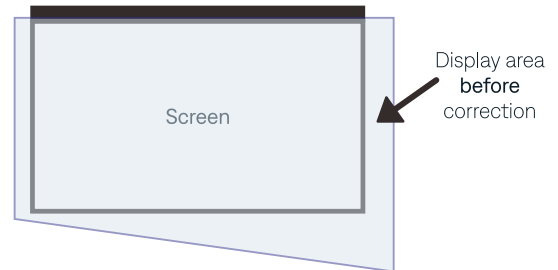
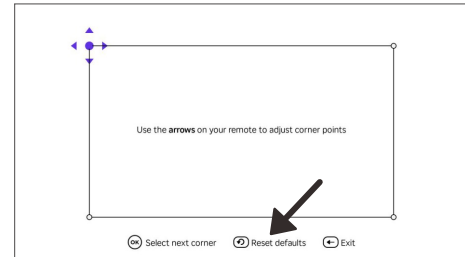
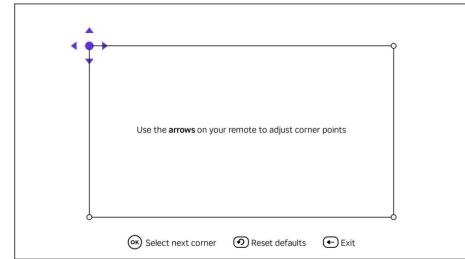
2. Manual Keystone Correction

For manual adjustment, go to **Home > Settings > Projector settings > Image correction > Manual keystone** and follow the on-screen instructions to adjust the image using four-point correction.

3. How to Fit into the Screen

Step 1: Press **Reset defaults** in the manual keystone menu.

Step 2: Adjust the position of the projector, and make sure the displayed area larger than the screen.



Step 3: Adjust the display area by using manual keystone and fit into the screen.

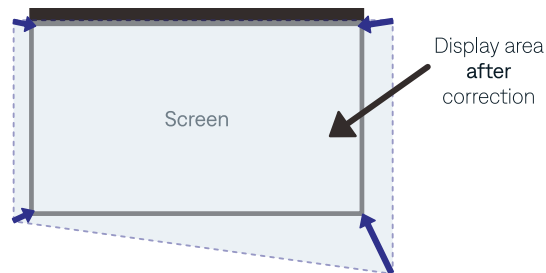
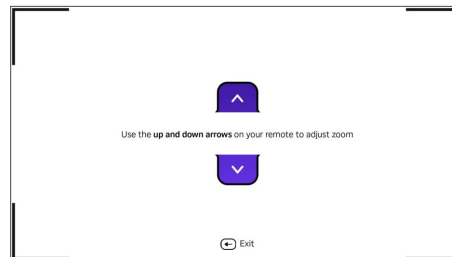


Image Scaling

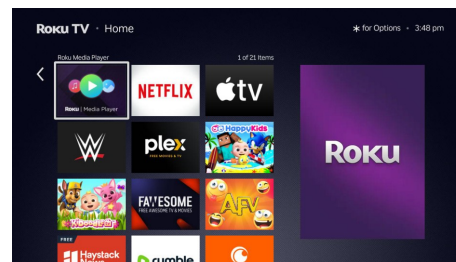
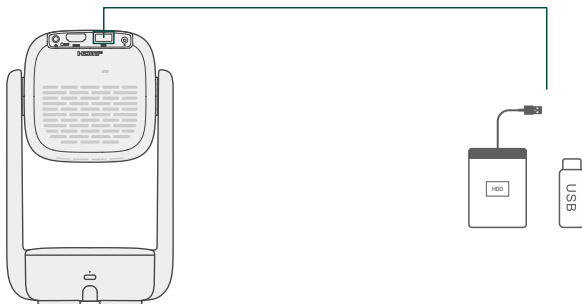
Adjust the image size by going to **Home > Settings > Projector settings > Image correction > Zoom**.



PROJECTOR CONNECTION AND INPUT SOURCE

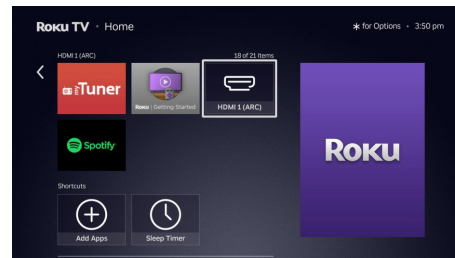
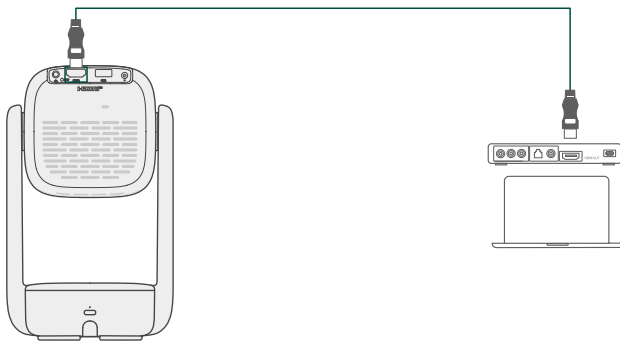
1. USB Connection

To play files from a USB media device, insert the disk into the projector's USB port. Follow the instructions when prompted to launch the **Roku Media Player** to locate and play your file. Or find and launch **Roku Media Player** on the **Home** screen.



2. HDMI Connection

Use an HDMI cable (not provided) to connect a device with an HDMI output port to the projector's HDMI port. Then go to **Home > Settings > Picture settings** and select **HDMI 1 (ARC)**. Or find and select **HDMI 1 (ARC)** on the **Home** screen under **Apps & Inputs**.

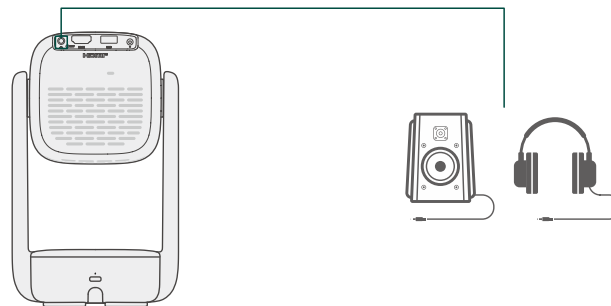


Note:

When connecting different Windows-based laptops or PCs to the projector via HDMI, there may be variations in color performance while displaying identical content. To fix this, go to **Home > Settings > Picture settings > HDMI 1 (ARC)** and then press the **[*]** button on the remote to open the **Settings** menu. Choose **Picture settings > Picture mode** and select the **Vivid** mode.

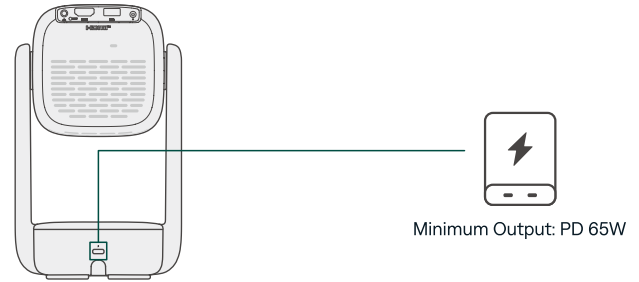
3. Wired Speaker and Headphones Connection

No input source selection is required.



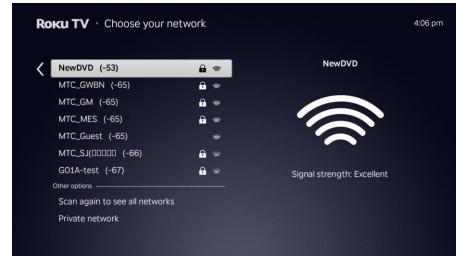
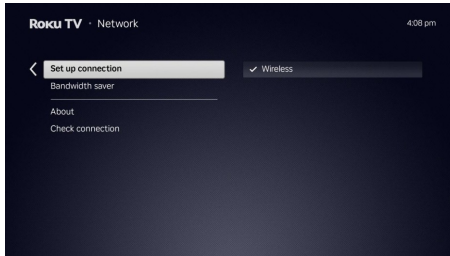
4. USB-C Temporary Power Supply

Supports any USB-C power bank, power adapter, and fast-charging cable with a minimum output of 65W to power the projector.



Wi-Fi CONNECTION

You can connect your projector to a Wi-Fi network by going to **Home > Settings > Network > Set up connection > Wireless**. Only 2.4GHz or 5GHz bands are supported.



SCREEN MIRRORING

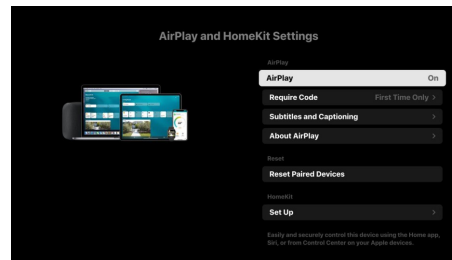
Important Note:

Copyrighted content from Hulu, Disney+, and similar streaming services CANNOT be wirelessly mirrored or cast due to copyright restrictions. These apps are available for download in the Roku Channel store.

For iOS Devices

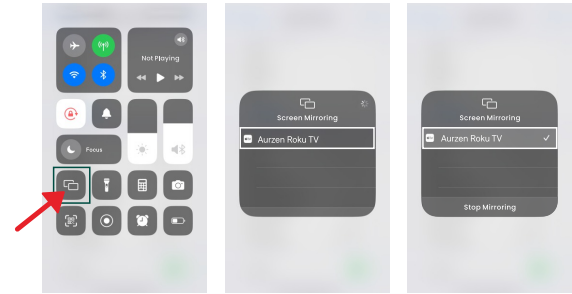
Tip:

Ensure **AirPlay** is turned on by going to **Home > Settings > Apple Airplay and HomeKit**.

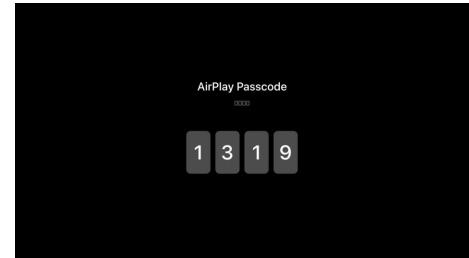


Step 1: Connect the projector and your iOS device to the same Wi-Fi network.

Step 2: Open the **Control Center** on your iOS device and tap **Screen Mirroring** to search for the projector.



Step 3: Choose **Aurzen Roku TV** (or the projector name if you have renamed it) from the list. For the first time, you'll need to enter the projector's on-screen passcode into your phone. Once connected, your iOS device's screen will be mirrored onto the projection screen or wall.



For Android Devices

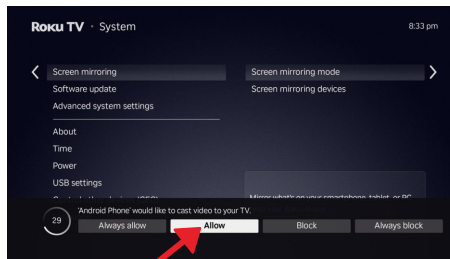
Tips:

- * Ensure the screen mirroring mode is **not** set to **Never allow** by going to **Home > Settings > System > Screen Mirroring**.
- * Ensure your Android device supports **Multi-screen**, **Smart View**, or **Wireless Display** (names may vary by device).

Step 1: Turn on Wi-Fi on your Android device (a successful Wi-Fi connection is not required).

Step 2: Activate the **Multi-screen/Smart View/Wireless Display** function on your Android device and search for the projector.

Step 3: Choose **Aurzen Roku TV** (or the projector name if you have renamed it) from the list and confirm casting when prompted. Once connected, your Android device's screen will be mirrored onto the projection screen or wall.

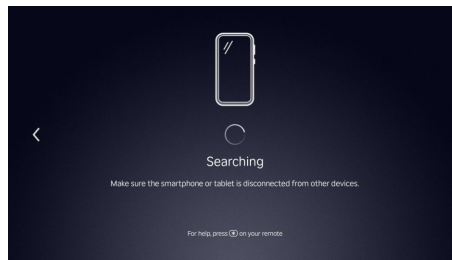
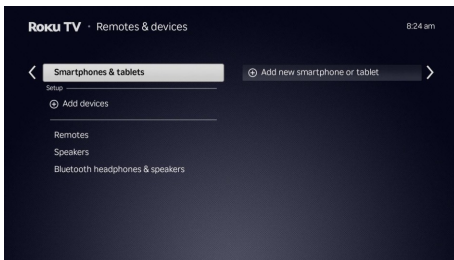


BLUETOOTH CONNECTION

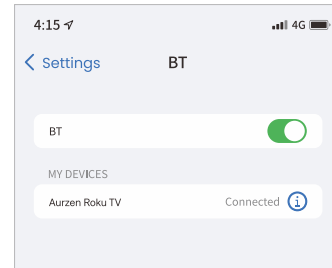
1. Use as a Bluetooth Speaker

Turn your projector into a Bluetooth speaker by connecting it to your mobile device.

Step 1: Go to **Home > Settings > Remotes & devices > Smartphones & tablets** and select **Add new smartphone or tablet**. Or, find and select **Bluetooth** on the **Home** screen under **Apps & Inputs**.



Step 2: Access your mobile device's Bluetooth settings and activate Bluetooth. Search for **Aurzen Roku TV** (or the projector name if you have renamed it) in the available devices list and pair your mobile device with the projector.

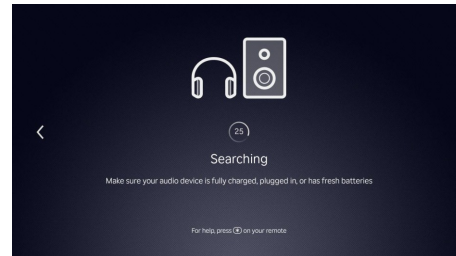
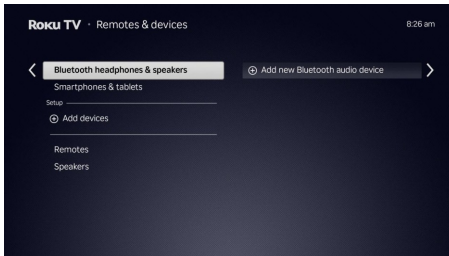


2. Connect to a Bluetooth Speaker or Headphones

You can connect the projector to a wireless Bluetooth speaker or headphones.

Step 1: Turn on your Bluetooth device and make it ready for a Bluetooth connection.

Step 2: Go to **Home > Settings > Remotes & devices > Bluetooth headphones & speakers** and select **Add new Bluetooth audio device**. Search for available devices, then select and pair your device with the projector.



SETTINGS

Network

1. View info on the connected network.
2. Check the network connection status.
3. Set up a Wi-Fi connection.
4. Enable/disable the bandwidth saver.

Remotes & devices

Connect the projector to external remotes, speakers, wireless headphones, smartphones, and tablets.

Theme

Personalize the projector's theme, including wallpaper, screensaver, sound and more.

Accessibility

Customize caption and screen reader settings.

Projector settings

1. Activate auto-focus & auto-keystone.
2. Adjust the focus manually.
3. Correct the keystone distortion manually.
4. Modify the image size.
5. Enable **auto-keystone & auto-focus** or **auto-focus only** upon movement.
6. Select the projection orientation for accurate image projection.

Picture settings

1. View input.
2. Customize picture settings such as brightness, contract, sharpness, color, tint, and more.

Inputs

Rename and move input icons.

Audio

Set audio output, menu volume, preferred audio language, streaming format, and digital output format.

Backdrops

Transform the display into a showcase for curated art or personal photos with a tap of the power button.

Guest Mode

Configure the guest mode to secure your account and personal data.

Home screen

Customize the home screen layout and settings.

Payment method

Add a payment method for subscriptions and purchases.

Apple AirPlay and HomeKit

Set up Apple AirPlay and HomeKit for seamless integration with Apple devices.

Legal notices

View privacy policy, terms of use, account terms and conditions and third party license.

Privacy

Manage advertising preferences, voice interaction, and Smart TV experience settings.

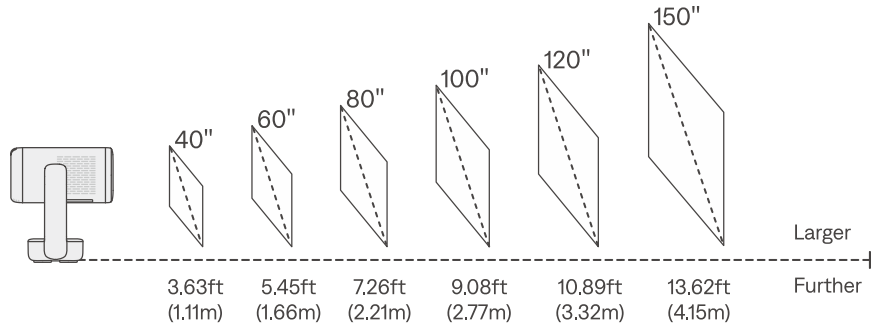
Help

Access tutorial videos for tips and guidance.

System

1. View system info.
2. Set a ZIP code.
3. Configure sleep timer, time zone, and clock format.
4. Customize power settings, including power-on display, auto power savings, standby LED status, Fast TV start, and restart.
5. Set the auto-launch feature and launch app for USB media devices.
6. Search for and control CEC devices.
7. Choose device language.
8. Set screen mirroring mode and device control.
9. Update the software as needed.
10. Restore the projector to the factory settings.
11. Reset network connection.
12. Enable/disable device connections.
13. Choose mobile app control level.

PROJECTION DISTANCE AND SIZE



- * For optimal image quality, we recommend a projection size of 80". Position the projector 7.26ft (2.21m) away from the wall or screen.
- * The recommended projection distance varies with different projection content. Adjust the distance between the wall/screen and the projector as needed.
- * Ambient darkness will improve the clarity of the projected images and may also improve auto focus and auto keystone functions.

CONTROL BY ROKU MOBILE APP

In addition to the remote control, you can use the Roku mobile app to control your projector.

Step 1: Connect both your mobile device and projector to the same wireless network.

Step 2: Download the Roku mobile app from App Store or the Google Play Store.



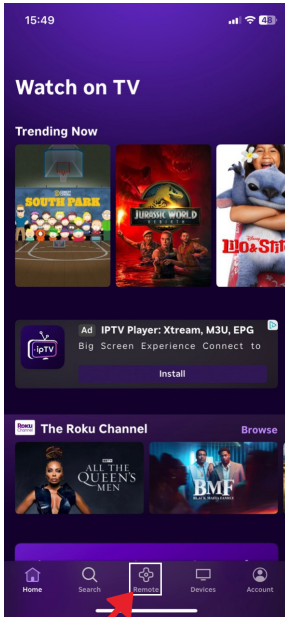
The Roku App (Official)
on the App Store (apple.com) for iOS.



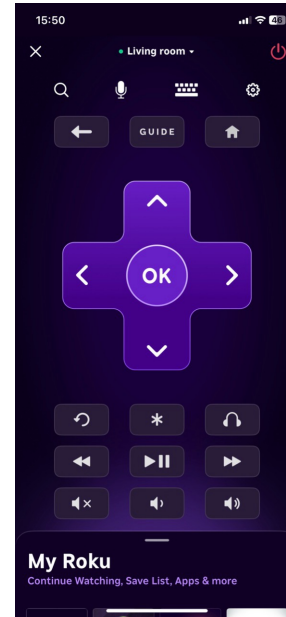
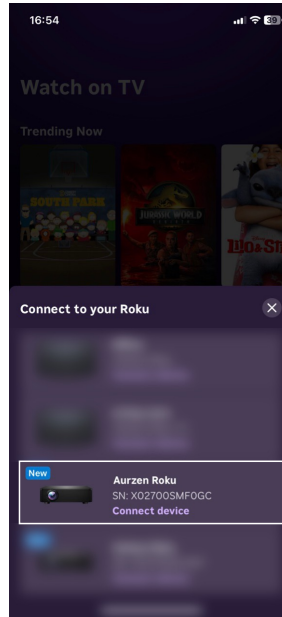
The Roku App (Official) -
Apps on Google Play for Android OS.

* Limitations apply to the mobile app. Please visit support.roku.com for information on device compatibility.

Step 3: Launch the app and tap the **Remote** tab.



Step 4: Choose **Aurzen Roku TV** (or the projector name if you have renamed it) from the device list to connect. Then the remote interface will appear.



SPECIFICATION

Display Technology	LCD	Dimensions	4.92 x 3.94 x 9.84 inches (125 x 100 x 250 mm)
Light Source	LED	Net Weight	2.6 lbs (1.18 kg)
Input Signals	576i/576P/720i/720P/1080i/1080P	Photo Format Supported	JPEG/PNG(4kx4k)/non-animated GIF(4kx4k)
Aspect Ratio	16:9	Audio Format Supported	AAC(5.1)/MP3/WAV(PCM)/AIFF/FLAC/OGG/ AC3
Installation Type	Front/Rear/Ceiling	Video Format Supported	MOV/MP4/MKV/AV1
Speaker	2 x 5W	Ports	HDMI 1.4 × 1 / USB 2.0 × 1 / Audio Out × 1
Power Supply	AC Input: 100-240V AC 50/60Hz 1.5A or USB-C Input: 20.0V DC, 3.25A	Mounting Screw	1/4"(not included)

HDMI™

HIGH-DEFINITION MULTIMEDIA INTERFACE

The terms HDMI, HDMI High-Definition Multimedia Interface, HDMI Trade dress and the HDMI Logos are trademarks or registered trademarks of HDMI Licensing Administrator, Inc.

Dolby Audio

Dolby, Dolby Audio and the double-D symbol are registered trademarks of Dolby Laboratories Licensing Corporation. Manufactured under license from Dolby Laboratories.

Google Play is a trademark of Google LLC.

App Store is a trademark of Apple Inc.

Bluetooth®

The Bluetooth® word mark and logos are registered trademarks owned by Bluetooth SIG, Inc. and any use of such marks by [Shenzhen Neutop Optoelectronics Co., Ltd.] is under license. Other trademarks and trade names are those of their respective owners.

Roku TV

Roku, Roku TV, the Roku logo, and the purple d-pad design are the trademarks or registered trademarks of Roku, Inc. in the United States and other countries. All other trademarks and logos herein are the property of their respective owners.

FC

This device complies with part 15 of the FCC Rules. Operation is subject to the following two conditions: (1) This device may not cause harmful interference, and (2) this device must accept any interference received, including interference that may cause undesired operation.

Note: This equipment has been tested and found to comply with the limits for a Class B digital device, pursuant to part 15 of the FCC rules. These limits are designed to provide reasonable protection against harmful interference in a residential installation. This equipment generates, uses and can radiate radio frequency energy and, if not installed and used in accordance with the instructions, may cause harmful interference to radio communications. However, there is no guarantee that interference will not occur in a particular installation. If this equipment does cause harmful interference to radio or television reception, which can be determined by turning the equipment off and on, the user is encouraged to try to correct the interference by one or more of the following measures:

- Reorient or relocate the receiving antenna.
- Increase the separation between the equipment and receiver.
- Connect the equipment into an outlet on a circuit different from that to which the receiver is connected.
- Consult the dealer or an experienced radio/TV technician for help.

Important: You are cautioned that changes or modifications not expressly approved by the party responsible for compliance could void the user's authority to operate the equipment.

RF Exposure Information:

- The radiated output power of this device meets the limits of FCC radio frequency exposure limits. This device should be operated with a minimum separation distance of 20cm (8 inches) between the equipment and a person's body.

Canada compliance statement /Conformité réglementaire canadienne :

This device complies with Innovation, Science and Economic Development Canada license-exempt RSS standard(s). Operation is subject to the following two conditions: (1) this device may not cause interference, and (2) this device must accept any interference, including interference that may cause undesired operation of the device.

Operation in the band 5150–5250 MHz is only for indoor use to reduce the potential for harmful interference to co-channel mobile satellite systems.

Exposure to radio frequency energy:

- The radiated output power of this device meets the limits of IC radio frequency exposure limits. This device should be operated with a minimum separation distance of 20 cm (8 inches) between the equipment and a person's body.

Le présent appareil est conforme aux CNR d'Innovation, Sciences et Développement économique Canada applicables aux appareils radio exempts de licence. L'exploitation est autorisée aux deux conditions suivantes : (1) l'appareil ne doit pas produire de brouillage, et (2) l'utilisateur de l'appareil doit accepter tout brouillage radioélectrique subi, même si le brouillage est susceptible d'en compromettre le fonctionnement.

La bande 5150–5250 MHz est réservée uniquement pour une utilisation à l'intérieur afin de réduire les risques de brouillage préjudiciable aux systèmes de satellites mobiles utilisant les mêmes canaux.

L'exposition à l'énergie radiofréquence:

- La puissance de sortie rayonné de cet appareil est conforme aux limites de la IC limites d'exposition aux fréquences radio. Cet appareil doit être utilisé avec une distance minimale de séparation de 20 cm entre l'appareil et le corps d'une personne.

CAN ICES (B) / NMB (B)



The symbol indicates class II equipment



The symbol indicates AC voltage



The symbol indicates DC voltage



For indoor use only



The exclamation point within an equilateral triangle is intended to alert the user to the presence of important operating and maintenance (servicing) instructions in the literature accompanying the appliance.

The mains plug is used as the disconnect device. The socket-outlet shall be installed near the equipment and shall be easily accessible.

The product complies with "RG1 IEC/EN 62471-5:2015".

The product label and certification information are located at the bottom of the product.

Model No.: A03A11

CONTACT US



| support@aurzen.com



| +1-667-218-4830 (Mon-Fri, 9:00 to 17:00 EST)

*If you need assistance outside these hours, please email us for assistance.