

Brother QL-1100 | QL-1100c  
QL-1110NWB | QL-1110NWBc

**brother**  
at your side



## Wide Format, Professional label printer

- Prints on labels up to 4" wide, capable of printing shipping postage labels for packages.
- Wide range of connectivity options.
- PC, Mac®, iOS and Android™ compatibility.
- High speed printing of up to 69 labels per minute<sup>1</sup>.
- Use continuous rolls and cutter to print labels up to three feet in length.
- Automatic Crop function lets on-line sellers easily print product and other barcode labels from A4/Letter size label sheet templates (Windows only)



The Brother series of wide format professional label printers offer unrivaled versatility not only in the office, but also warehouse healthcare, education, government and other industries.

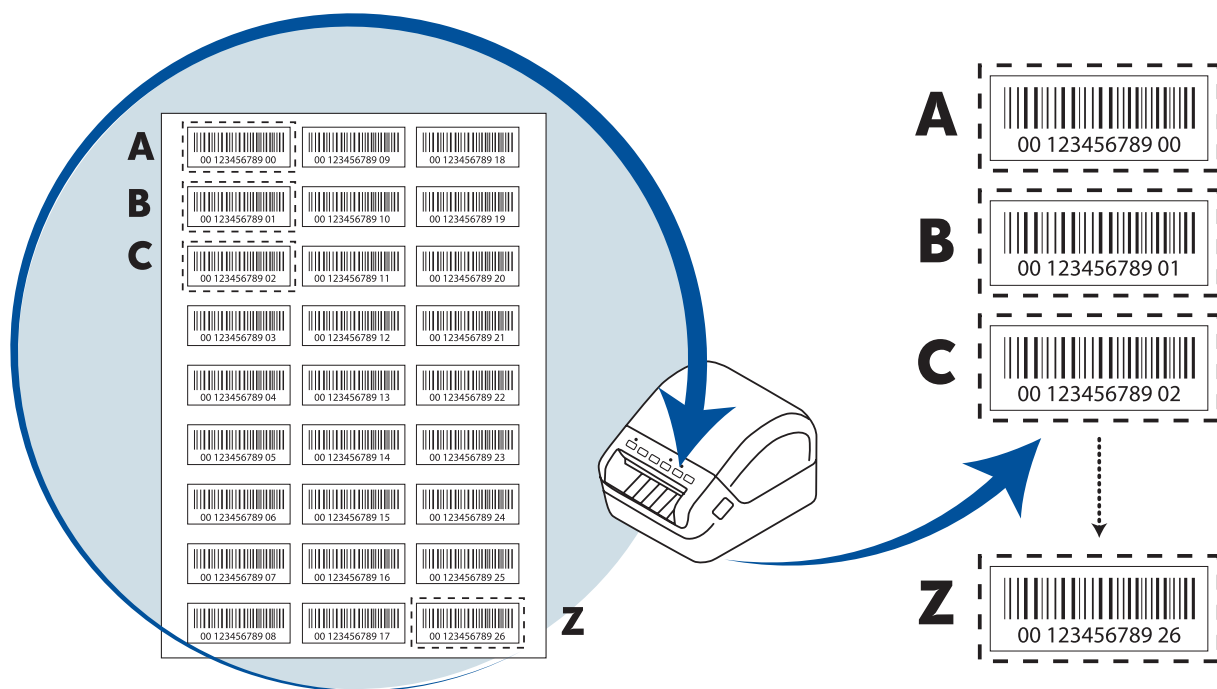
Create labels with black print up to three feet long from PC, Mac®, iOS, or Android™ devices. All models allow easy connection to desktop computers using USB. The flagship Brother QL-1110NWB and QL-1110NWBc models have Wireless, Ethernet, and Bluetooth® connectivity. The Brother QL-1100 and QL-1110NWB also include USB host interface connectivity.

For developers and systems integrators looking to incorporate label printing as part of their solutions, software development kits for Windows, iOS, and Android offer an easy way to add support for the Brother QL-1100 and QL-1110c label printers.



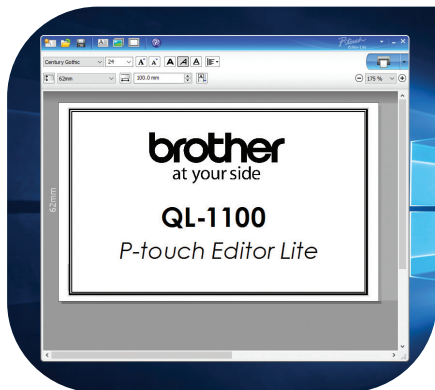
## Auto Crop *Windows only*

The Auto Crop feature on the Brother QL-1100 and QL-1100c Series label printers automatically identifies and crops individual labels (including barcodes) from an A4/Letter sized sheet and prints each label one by one. You can print the entire sheet of labels or choose a section using the snapshot feature and only print individual labels. This is an excellent feature for product labels or other labels that sheet formats are already generated. Now you can easily print only the labels you need quickly.



# Software solutions

With label design apps for desktop PC's and mobile devices<sup>2</sup>, and SDK's to integrate the QL range into your own applications, you can choose the best option for your label printing needs.

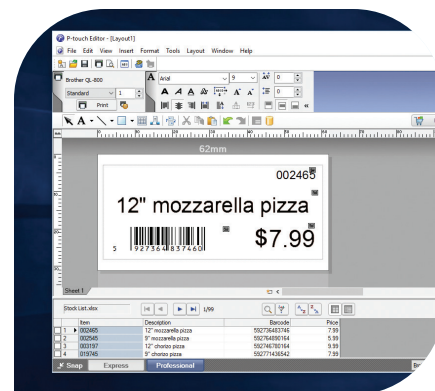


## P-touch Editor Lite / P-touch Editor Lite LAN

Built inside the Brother QL-1100 and QL-1100c, this easy-to-use label design software works without installing additional software or drivers. Working like a USB flash drive, connect to your PC using USB, and launch the software from the drive that appears. Include images, frames, and any fonts on your label design and print! A version for network-connected models is also available - run the software to allow many PC's in an office to print labels to one printer. Again, no installation is needed.

## P-touch Editor with Microsoft Office add-in

Design professional labels including images and logos, barcodes and frames. Link to data contained in Excel or .csv files, to print many labels quickly and efficiently. The Microsoft Office add-in lets you highlight, click and print right from within Word, Excel, or Outlook.

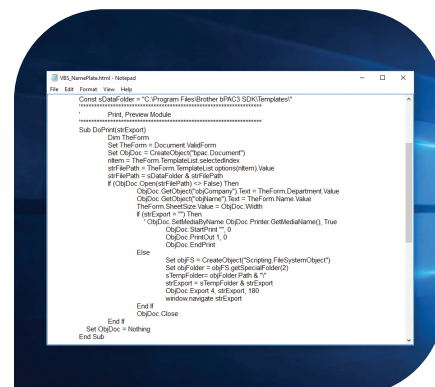


## Brother iPrint&Label app<sup>2</sup> for iOS and Android smartphones/tablets

Print labels using the free iPrint&Label app. Connect via Wi-Fi (on the Brother the Brother QL-1100 and QL-1100c) or Bluetooth® (on Brother QL-1110NWB and QL-1110NWBc), and either choose one of the pre-defined templates or quickly design your label from scratch. This free app is available from your mobile device's app store by searching "Brother iPrint&Label".

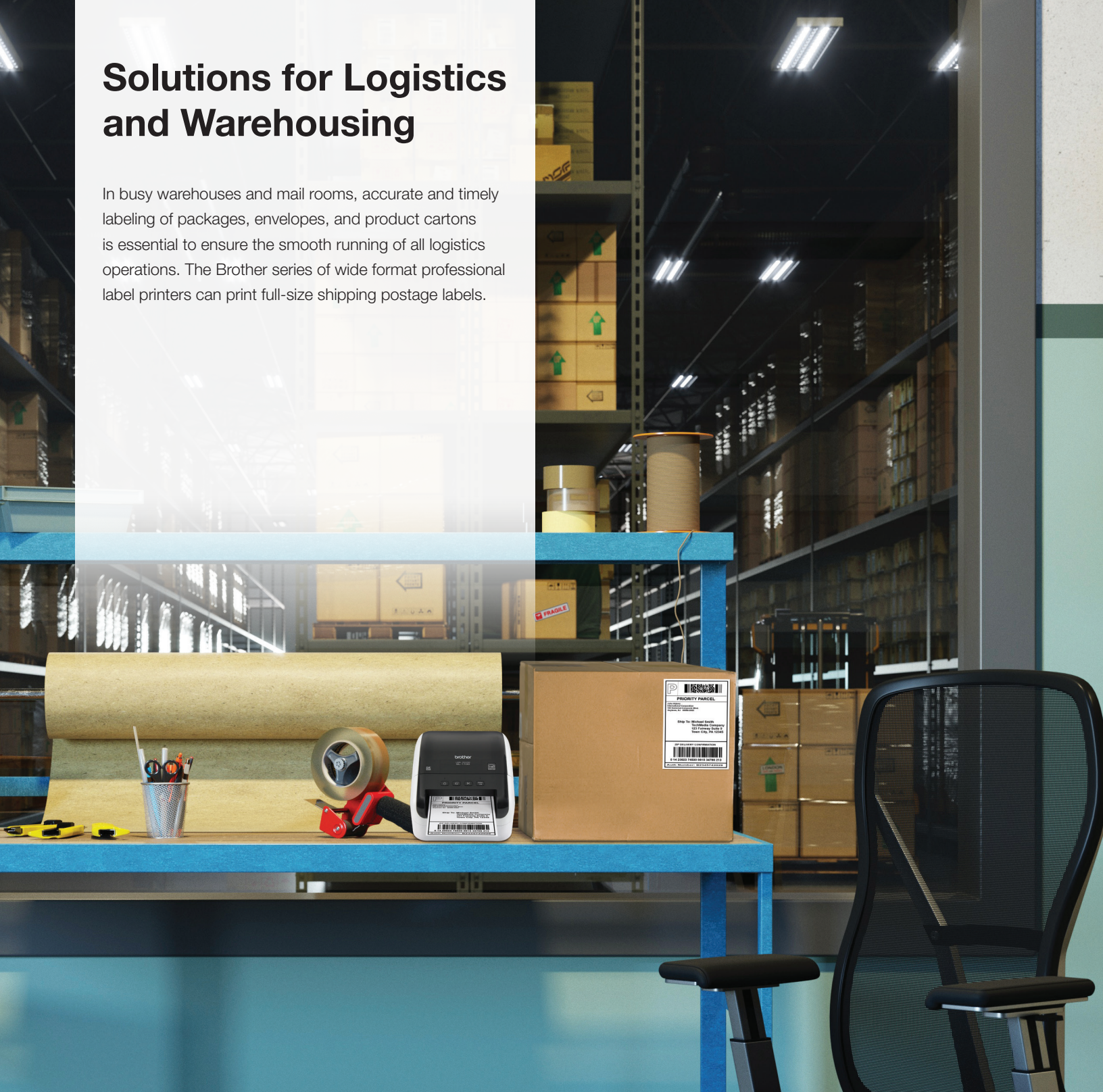
## Software Development Kits for Windows, iOS and Android

System integrators and software developers can now take advantage of various Brother SDK's that allow easy integration of label printing directly within their own apps and software. For more information please visit <https://developerprogram.brother-usa.com>.



# Solutions for Logistics and Warehousing

In busy warehouses and mail rooms, accurate and timely labeling of packages, envelopes, and product cartons is essential to ensure the smooth running of all logistics operations. The Brother series of wide format professional label printers can print full-size shipping postage labels.



Handling labels



Postage labels



Shipping labels



Product packaging



# DK Supplies for Wide Format Professional Label Printers

Wide range of labels available in paper and plastic film material, pre-sized labels or continuous rolls

## Die-Cut Paper Labels:

Item Number	Description	Uses	Label Size	Color	Labels per Roll
DK-1201	Standard Address	Postcard addresses, standard envelopes, binders, small packages, other mail	1.1" x 3.5" (29mm x 90.3mm)	Black on White	400
DK-1202	Shipping	Flat envelope addresses, binders, medium-size packages, storage boxes, other mail	2.4" x 3.9" (62mm x 100mm)	Black on White	300
DK-1203	File Folder	File folders	0.66" x 3.4" (17mm x 87.1mm)	Black on White	300
DK-1204	Multi-Purpose / Return Address	Envelope return addresses	0.66" x 2.1" (17mm x 54.3mm)	Black on White	400
DK-1208	Large Address	Files folders, flat envelopes, binders, storage boxes	1.4" x 3.5" (38mm x 90.3mm)	Black on White	400
DK-1209	Small Address	Postcard addresses, standard envelopes, binders, small packages, other mail	1.1" x 2.4" (28.9mm x 62mm)	Black on White	800
DK-1218	Round	Large microscope specimen samples	0.94" diameter (24mm)	Black on White	1,000
DK-1219	Round	Small microscope specimen samples	0.47" diameter (12mm)	Black on White	1,200
DK-1221	Square	Large microscope specimen samples	0.9" Square (23mm)	Black on White	1,000
DK-1234 <sup>3</sup>	Adhesive Name Badge	Visitor/Attendee Name Badge	2.3" x 3.4" (60mm x 86mm)	Black on White	260
DK-1240 <sup>4</sup>	Large Multi-Purpose	Flat envelope addresses, binders, large-size packages, storage boxes, other mail	1.9" x 4" (50.5mm x 101mm)	Black on White	600
DK-1247 <sup>4</sup>	Large Shipping	Flat envelope addresses, binders, large-size packages, storage boxes, other mail	4.07" x 6.4" (103mm x 164mm)	Black on White	180
<b>Film Labels:</b>					
DK-1207	CD/DVD Labels	CD labels	2.2" diameter (58.2mm)	Black on White	100

## Continuous Length Tapes

Item Number	Description	Uses	Label Size	Color	Labels per Roll
DK-2205	Wide Width	Flat envelope addresses, binders, medium-size packages, storage boxes, other mail	2.4" x 100' (62mm x 30.4m)	Black on White	—
DK-2210	Medium Width	Binder spines, postcards, standard envelopes, small packages, other mail	1.1" x 100' (29mm x 30.4m)	Black on White	—
DK-2214	Narrow Width	Video spines, file folders	0.47" x 100' (12mm x 30.4m)	Black on White	—
DK-2223	Wide Width	Flat envelope addresses, binders, medium-size packages, other mail	2.0" x 100' (50mm x 30.4m)	Black on White	—
DK-2225	Medium Width	Flat envelope addresses, binders, small packages, postcards, other mail	1.5" x 100' (38mm x 30.4m)	Black on White	—
DK-2246 <sup>4</sup>	Extra-Wide Width	Flat envelope addresses, binders, storage boxes, large-size packages, banners, signs	4.07" x 100' (103mm x 30.4m)	Black on White	—
DK-N5224	Wide Width	Non-adhesive, for name badges	2.1" x 100' (54mm x 30.4m)	Black on White	Approx 333 badges
<b>Film Tapes:</b>					
DK-2211	Medium (White)	Storage boxes, signs, displays	1.1" x 50' (29mm x 15.2m)	Black on White	—
DK-2212	Wide (White)	Storage boxes, signs, displays	2.4" x 50' (62mm x 15.2m)	Black on White	—
DK-2113	Wide (Clear)	Large window signs, wide envelopes	2.4" x 50' (62mm x 15.2m)	Black on Clear	—
DK-2606	Wide (Yellow)	Storage boxes, signs, displays	2.4" x 50' (62mm x 15.2m)	Black on Yellow	—
<b>Removal Paper Tapes:</b>					
DK-4205	Wide (White)	Name badges, storage boxes	2.4" x 100' (62mm x 30.4m)	Black on White	—
DK-4605	Wide (Yellow)	Name badges, storage boxes	2.4" x 100' (62mm x 30.4m)	Black on Yellow	—

# Specifications

## QL-1100/c

## QL-1110NWB/c

Printing / Media		
Printing technology	Direct Thermal	
Maximum Resolution (dpi)	300 x 300	
Maximum Print Speed (labels per min.) <sup>1</sup>	Up to 69 labels per minute	
Tape Sizes	Die-cut and Continuous	
Maximum Tape Width (inches)	4.09"	
Maximum Print Width (inches)	4.0" <sup>7</sup>	
Maximum Label Length	3 feet	
Cutter	Auto	
Cutter Life	Up to 300,000 (die-cut labels) 150,000 (continuous labels)	
Connectivity		
USB	USB version 2.0 full-speed	
USB host capability	Yes (HID class) (USB host not available on QL-1100c and QL-1110NWBc)	
Bluetooth® wireless technology		Yes
Bluetooth® profiles		SPP(Serial Port Profile) OPP(Object Push Profile) BIP(Basic Imaging Profile) on QL-1110NWB only HCRP(Hard Copy Cable Replacement Profile) iAP/(MFIsupported) profile
Wireless LAN		IEEE802.11b/g/n
Wireless LAN security (Infrastructure mode)		WEP, WPA-PSK/WPA2-PSK (TKIP/AES), LEAP (CKIP), EAP-FAST (TKIP/AES), PEAP (TKIP/AES), EAP-TTLS (TKIP/AES), EAP-TLS (TKIP/AES), WPA3 (QL-1110NWBc only)
AirPrint®		Yes
Wired LAN		10/100 Base-TX
Mobile Device Compatibility		
Software/App <sup>2</sup>	Brother iPrint&Label, free app download for USBtoGo printing from your Android™ mobile device	AirPrint®, Brother iPrint&Label, free app download for wireless printing from your Apple® or Android™ mobile device
Memory		
Flash (for label templates)	7.8	
Locations (for label templates)	99	255
Power		
Power	120V ~ 60Hz 1.5A	120V ~ 50/60Hz 1.6A
ENERGY STAR® certified	Yes	

# Specifications

## QL-1100/c

## QL-1110NWB/c

Weights / Dimensions		
Dimensions	6.7" x 5.9" x 8.7"	
Weight	3.65 lbs.	3.81 lbs.
Software / Firmware		
Operating System	PC: Windows 10, Windows 8/8.1, Windows 7, Windows Server 2008, 2008 R2, 2012, 2012 R2, 2016, Mac: OS X® v10.11.x - v10.13.x	
SDK availability (visit <a href="http://www.brother-usa.com/lp/civ/home.aspx">http://www.brother-usa.com/lp/civ/home.aspx</a> )	b-PAC (for Windows) Brother Print SDK for Android™ (only USB)	b-PAC (for Windows) Brother Print SDK for Android™ Brother Print SDK for iPhone/iPad (for iOS)
Supported printer commands	Raster ESC/P P-touch Template	
Barcode symbologies (using P-touch Editor)	CODE39, CODE128, UCC/EAN128(GS1-128), ITF(I-2/5), CODABAR(NW-7), UPC-A, UPC-E, EAN13, EAN8, ISBN-2(EAN13 AddOn2), ISBN-5(EAN13 AddOn5), Laser Barcode, POSTNET, RSS(RSS14 Standard, RSS14 Truncated, RSS14 Stacked, RSS14 Stacked Omni, RSS Limited, RSS Expanded, RSS Expanded Stacked), PDF417(Standard, Truncate, Micro), QR code(Model1, Model2, Micro), Data Matrix(ECC Square, ECC Rectangular), MaxiCode(Model2, Model3, Model4, Model5) RSS symbols / CODE93 / POSTNET / UPC/EAN EXTENSION / MSI / QR Code (model 1, model 2, micro QR)PDF417 (Standard, Truncate, MicroPDF417) / Data Matrix(ECC200 Square, ECC200 Rectangular) / MaxiCode / Aztec (Windows only), IMB	
Barcode symbologies (Built-in printer firmware)	CODE39, CODE128, UCC/EAN-128(GS1-128), ITF(I-2/5), CODABAR(NW-7), UPC-A, UPC-E, EAN13(JAN13), EAN8, GS1 DataBar(RSS)(GS1 DataBar Omnidirectional,GS1 DataBar Truncated,GS1 DataBar Stacked,GS1 DataBar Stacked Omnidirectional,GS1 DataBar Limited,GS1 DataBar Expanded,GS1 DataBar Expanded Stacked), PDF417(Standard, Truncate, Micro), QR Code(Model 1, Model 2, Micro), Data Matrix (ECC200 Square, ECC200 Rectangular), MaxiCode, CODE93, POSTNET, UPC-E EXTENTION, MSI, Aztec	
Internal fonts	Bitmap fonts: Letter Gothic Bold, Helsinki, Brussels, San Diego, Brougham Font sizes: 24, 32, 48 dots Outline fonts: Letter Gothic Bold, Helsinki, Brussels Font sizes: 33-400 dots (22 sizes)	
Date/Time Stamp	PC generated	
Included items		
In the box	P-touch Editor Software & Driver (Web Download), AC Power Cable, USB Cable, Starter Rolls: DK-1247 Diecut Large Shipping Labels (41 labels), DK-2205 Continuous Length Paper Tape – 2.4" (62mm) x 16.4'	

# brother

at your side



Microsoft Excel, Outlook, Windows and Word are trademarks of the Microsoft group of companies.

Use of the Made for Apple and Works with Apple badges means that an accessory has been designed to connect specifically to the Apple product(s) identified in the Made for Apple badge and to work specifically with the technology identified in the Works with Apple badge, and has been certified by the developer to meet Apple performance standards. Apple is not responsible for the operation of this device or its compliance with safety and regulatory standards.

iPad, iPhone and iPod, AirPrint and Mac are trademarks of Apple Inc., registered in the U.S. and other countries and regions.

iOS is a trademark or registered trademark of Cisco in the U.S. and other countries and is used under license.

Wi-Fi® and the Wi-Fi CERTIFIED™ logo are trademarks of the Wi-Fi Alliance®.

The Bluetooth word mark and logos are owned by the Bluetooth SIG, Inc. and any use of such marks by Brother Industries, Ltd. is used under license.

Android is a trademark of Google LLC.

1. Based on using standard address labels, black text only, at 300 X 300 dpi.
2. Free app download and wireless internet connection required. Compatibility may vary by device and operating system.
3. Compatible with the Brother QL-800 and QL-1100 series.
4. 4" wide format format DK supplies are compatible only with the Brother QL-1100, QL-1100c, QL-1110NWB, and QL-1110NWBc series.

© 2023 Brother International Corporation  
200 Crossing Boulevard, Bridgewater, NJ 08807

Images are for illustrative purposes only. All specifications are subject to change without notice.