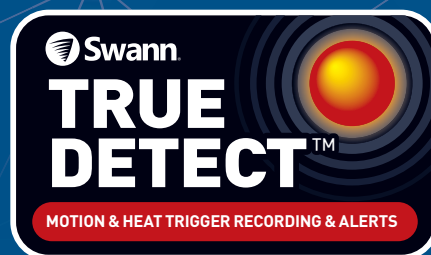


PRO-SERIES HD 1080P



Thermal-Sensing Security Camera

Motion & Heat-Activated 1080p HD Dome Camera

1080p

HIGH DEFINITION



PIR MOTION DETECTION



WEATHERPROOF



DAY/NIGHT VISION

DIY

EASY INSTALLATION

Put the heat on crime with this security camera

- Cutting edge full HD cameras with 1080p video surveillance technology to deter thieves, safeguard loved ones, protect your property & cut the cost of crime
- Seeing is believing from this 1080p full HD camera (2.1 Megapixels) with an 85° viewing angle to see high detail over a wider field of view
- Latest infrared cut filter & powerful LEDs producing night vision up to 100ft / 30m
- State-of-the-art PIR motion sensors designed for security applications & optimized to reliably detect people but also cars, large pets and other large heat-generating objects
- With more accurate motion detection you have more reliable notifications & activity-triggered recording, eliminating false triggers due to the wind, leaves falling, bugs, rain & more, saving you hard drive space & playback time (when combined with a DVR)^
- With discreet dome styling & sturdy aluminum construction, the camera suits indoor & outdoor applications with an IP66 rating for any weather conditions & cable threaded through the mounting stands for added protection
- Perfect addition to Swann's 4575 & 4580 Series HD DVR Security Systems if you need extra surveillance^. The PRO-1080MSD dome cameras are another example of security made smarter!

SWPRO-1080MSD

For more information on this product visit swann.com

Thermal-Sensing Security Camera

Motion & Heat Activated 1080p HD Dome Camera

What's in the box?

All installation accessories included

- PRO-1080MSD Camera
- BNC Cables 60ft / 18m
- Power Adapter & Cable
- Mounting Screws & Plugs
- Operating Instructions
- Theft Deterrent Stickers



Specifications

PRO-1080MSD CAMERA

Video

Video Quality 1080p
Viewing Angle 85°

Night Vision

Night Vision Distance Up to 100ft / 30m

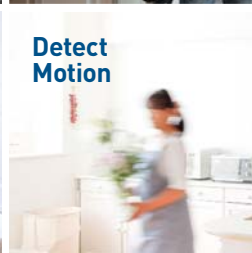
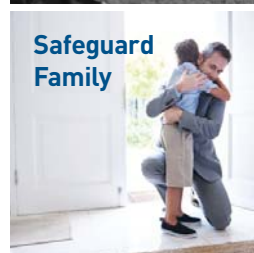
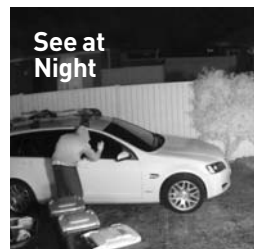
General

PIR Thermal/Motion Sensor Yes, TrueDetect™
PIR Sensor Range Up to 32ft/10m
Indoor / Outdoor Indoor / Outdoor, IP66 rated
Audio Microphone No
Operating Temperature -4° F ~ 122° F / -20° C ~ 50° C
Body Construction Aluminum
Dimensions – Camera 3.94" x 3.94" / 100mm x 100mm (Diameter x Height)

Code

Swann Code SWPRO-1080MSD

What can I do with this system?



New PIR Motion Technology



All movement, including objects that don't matter like leaves & trees, triggers motion detection & recording



Designed for your security, the PIR motion sensors distinguish heat & movement of larger objects including people & cars

~ Indicative visual, video images show onscreen like normal

^ See Swann website for compatible DVRs

^ Ver sitio web de Swann para DVRs compatibles

Note: Trademarks are properties of their respective owners

For more information on this product visit
www.swann.com