

## QUICK SETUP GUIDE

## RCA to HDMI Converter

NS-HZ330 / NS-HZ330-C

## PACKAGE CONTENTS

- Analog to HDMI Converter
- Power adapter
- Quick Setup Guide

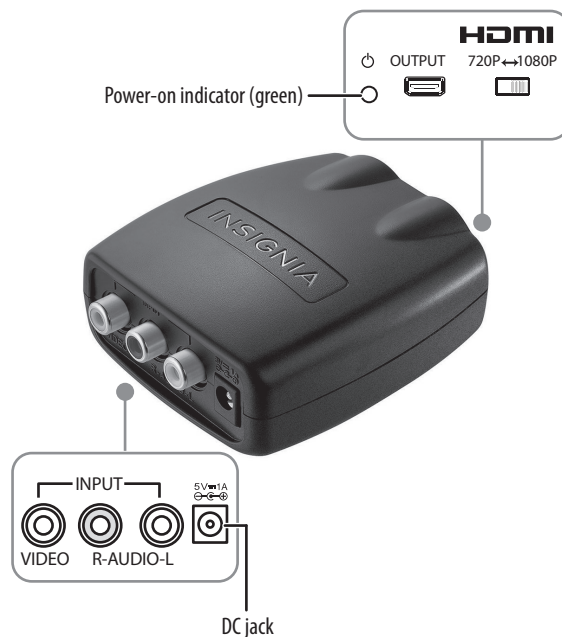
**Attention:** Your converter supports RCA INPUT only. It doesn't support RCA OUTPUT.

**Note:** RCA and HDMI cable not included and required for use.

## FEATURES

- Allows easy connection of devices with AV components to any TV or display with an HDMI input.
- HDMI output with selectable 720p/1080p output works with most TVs and displays with an HDMI input.
- Power adapter for constant use in any system.
- Supports NTSC/PAL TV formats.

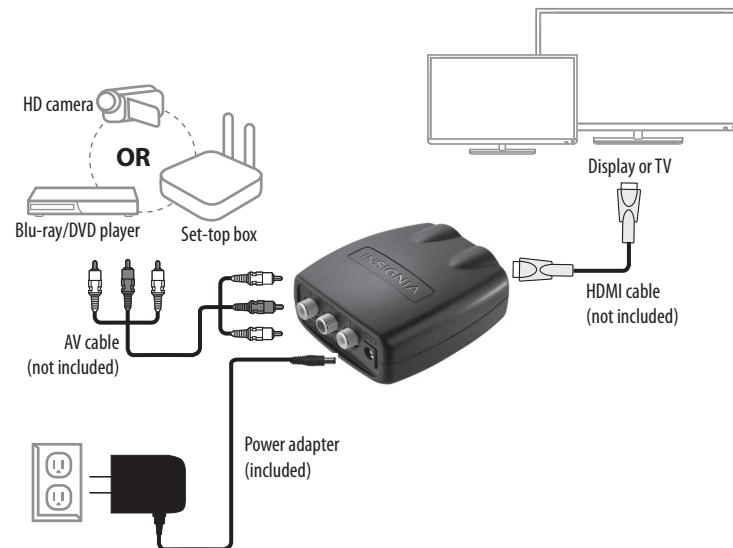
## Top view



## SETTING UP YOUR CONVERTER

**Note:** Before you install this device, turn off the audio/video device that you are connecting.

- 1 Connect an AV cable (yellow, red, and white, not included) to the input port on the converter, then connect it to the AV Out port on your audio/video device.
- 2 Using an **HDMI** cable (not included), connect the converter's **HDMI** output to a display device such as TV / LCD / Monitor that has **HDMI** input.
- 3 Connect the AC power adapter to the DC jack on the converter, then plug the power adapter into a wall outlet.
- 4 Turn on the connected devices and begin playback. If you are not getting audio or video, check the connections and settings to make sure that they are all correct.
- 5 Select either 720p or 1080p output via the switch on the converter. If you are not sure, select 720p for maximum compatibility.



## SPECIFICATIONS

<b>Dimensions (H×W×D):</b>	1.25 × 2.85 × 3.2 in. (3.18 × 7.23 × 8.3 cm)
<b>HDMI version:</b>	V1.3
<b>Input format:</b>	NTSC or PAL
<b>IHDMI output connector:</b>	Type A 19 pin Female × 1
<b>HDMI video output resolution:</b>	720p@60Hz 1080p@60Hz
<b>Power supply:</b>	5V===1A
<b>Power consumption:</b>	3.8 Watts (max.)
<b>Accessories:</b>	Power adapter with 5.9 ft (1.8 m) length power cable

## IMPORTANT SAFETY INFORMATION

- Indoor use only.
- There are no user serviceable parts. Do not open the housing.
- Do not use in a high humidity environment.
- Use included power adapter only.

## TROUBLESHOOTING

If you have problems with your converter, try these suggestions before calling Customer Service.

### The power indicator is off:

- If the power on indicator is not on, make sure that the wall outlet that the power adapter is plugged into is a live outlet and that it is turned on (if it is switched).

### No video and no audio:

- Check the connections and make sure that they are correct and secure.
- Make sure that the TV is set to the HDMI input, and the source device is setup to output an RCA signal.
- Try the other position on the 720p/1080p switch on the converter box.
- Make sure that the RCA cable or HDMI cable is workable.

### Has video, but no audio:

- Make sure that your TV or monitor is on the AV input.
- Make sure that the RCA Cable is workable.
- Make sure that the volume is turned up on your playback device.

### Image quality is poor:

- Because of the limitations of the legacy analog composite video output, the image quality will not be as good as a digital or HD source. There will be softness to the image and the colors will not be as vivid. This is normal operation and not a limitation of the converter box.

## LEGAL NOTICES

### FCC Statement

This device complies with Part 15 of the FCC Rules. Operation is subject to the following two conditions: (1) this device may not cause harmful interference, and (2) this device must accept any interference received, including interference that may cause undesired operation.

### FCC Caution

Changes or modifications not expressly approved by the party responsible for compliance could void the user's authority to operate this equipment.

**Note:** This equipment has been tested and found to comply with the limits for a Class B digital device, pursuant to Part 15 of the FCC Rules. These limits are designed to provide reasonable protection against harmful interference in a residential installation. This equipment generates, uses and can radiate radio

frequency energy and, if not installed and used in accordance with the instructions, maybe cause harmful interference to radio communications. However, there is no guarantee that interference will not occur in a particular installation. If this equipment does cause harmful interference to radio or television reception, which can be determined by turning the equipment off and on, the user is encouraged to try to correct the interference by one or more of the following measures:

- Reorient or relocate the receiving antenna.
- Increase the separation between the equipment and receiver.
- Connect the equipment into an outlet on a circuit different from that to which the receiver is connected.
- Consult the dealer or an experienced radio/TV technician for help.

### CAN ICES-003 (B)/NMB-003 (B)

## ONE-YEAR LIMITED WARRANTY

Visit [www.insigniaproducts.com](http://www.insigniaproducts.com) for details.

## QUEBEC AVAILABILITY GUARANTEE

For Quebec Residents Only: No guarantee of replacement parts, repair services, or maintenance/repair information. Visit [www.insigniaproducts.com](http://www.insigniaproducts.com) for details.

## CONTACT INSIGNIA:

For customer service, call 1-877-467-4289 (U.S. and Canada)  
[www.insigniaproducts.com](http://www.insigniaproducts.com)



The Adopted Trademarks HDMI, HDMI High-Definition Multimedia Interface, and the HDMI Logo are trademarks or registered trademarks of HDMI Licensing Administrator, Inc. in the United States and other countries.

INSIGNIA is a trademark of Best Buy and its affiliated companies.  
Distributed by Best Buy Purchasing, LLC  
Richfield, MN 55423  
©2025 Best Buy. All rights reserved.

