



## G733 LIGHTSPEED Wireless RGB Gaming Headset

### INDEX

#### GETTING STARTED

- [Contents](#)
- [Setup instructions](#)
- [Size adjustment](#)
- [Features](#)
- [Spare parts](#)
- [Logitech G Hub Software](#)
- [Recycling](#)
  - [Battery removal for recycling](#)

#### SPECIFICATIONS

- [Headset Specifications](#)
- [Physical Specifications](#)

#### FAQs

- [I am unable to uninstall G HUB on macOS Ventura](#)
- [Can I downgrade to an older version of G HUB to continue using NVIDIA Broadcast?](#)
- [NVIDIA Broadcast Removed From Logitech G HUB](#)
- [How Do I Pair a Wireless LIGHTSPEED USB Dongle with My Headset?](#)
- [Logitech G HUB - FAQs](#)
  - [About Logitech G Hub](#)

**WARRANTY**

- [Hardware warranty](#)

**CONTACT US**

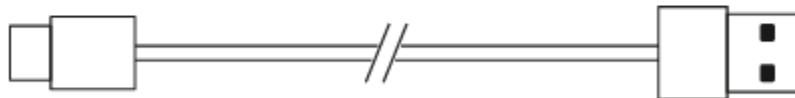
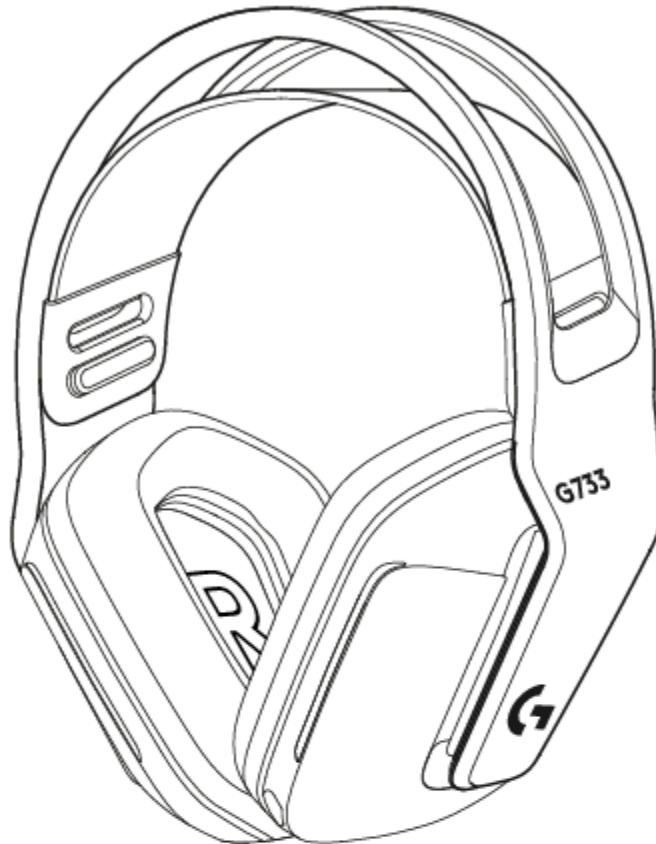
- [Logitech Support](#)

**DOWNLOAD**

- [G Hub](#)

# GETTING STARTED

## CONTENTS



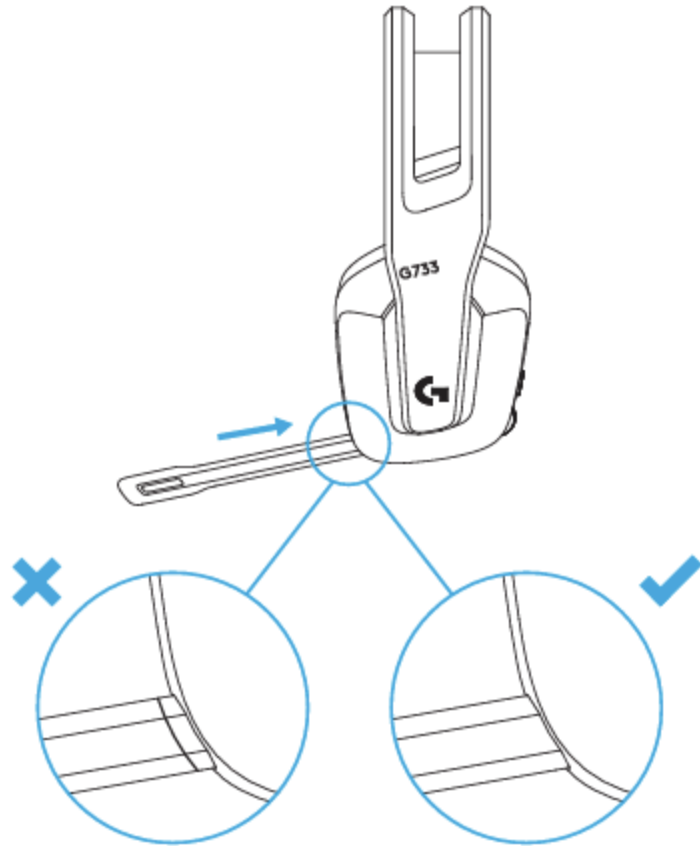
## SETUP INSTRUCTIONS

1. Insert the mic boom completely into the headset.
2. Insert receiver into the USB port of your PC.
3. Short press to turn **ON**.
4. (Optional) Download Logitech G HUB software to access advanced features.

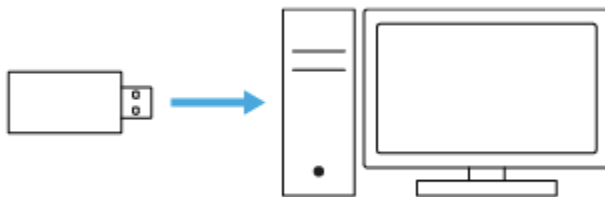
Download at

[logitechG.com/ghub](https://logitechG.com/ghub)

1



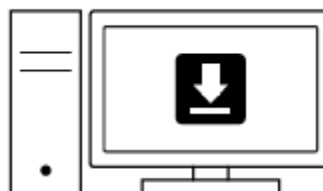
2



3



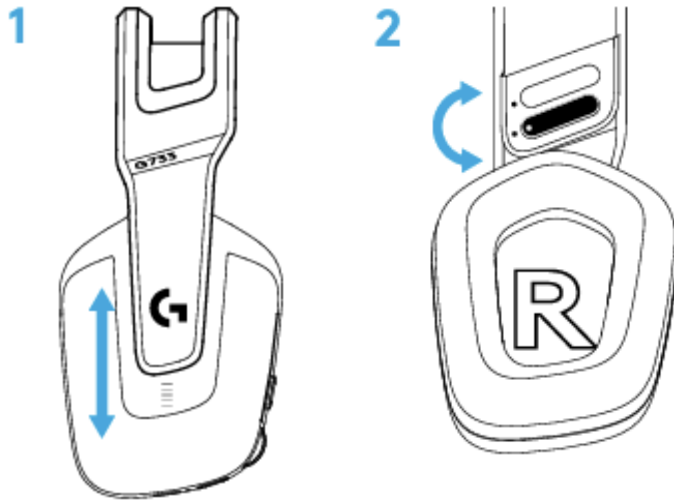
4



[logitechG.com/ghub](https://logitechG.com/ghub)

## SIZE ADJUSTMENT

1. The earcups can be adjusted up and down.
2. The length of the headband can be adjusted.



## FEATURES

1. Size-adjustable earcups
2. Removable and replaceable mic
3. USB-C port for charging
4. ON/OFF button
5. Reversible and replaceable headband strap
6. Headband strap adjusting feature
7. Removable and replaceable earpads
8. Mute/unmute button
9. Volume roller



## UNDERSTAND

1. When battery life is **below 10%**, the audio will beep every 15 min.
2. When battery life is **below 2%**, the lights will flash red and the audio will beep every 15 min.
3. When plugging the charging cable, the lights will breathe **green** 5 times and revert to its previous state.
4. When muting the mic, the lights will flash **red** and the audio will beep twice.
5. When unmuting the mic, the lights will flash **green** and the audio will beep three times.
6. When using G HUB software, pressing the ON/OFF button once when the headset is ON will let you know the battery life remaining.

## SPARE PARTS

You can find replacement parts at [logitechG.com](https://logitechG.com) in selected regions, including:

- Headband strap
- Earpads
- Mic
- Cable
- Receiver

## LOGITECH G HUB SOFTWARE

(Optional) Download Logitech G HUB software to access advanced features. Download at [logitechG.com/GHUB](https://logitechG.com/GHUB).

Logitech G HUB software lets you customize many features, including:

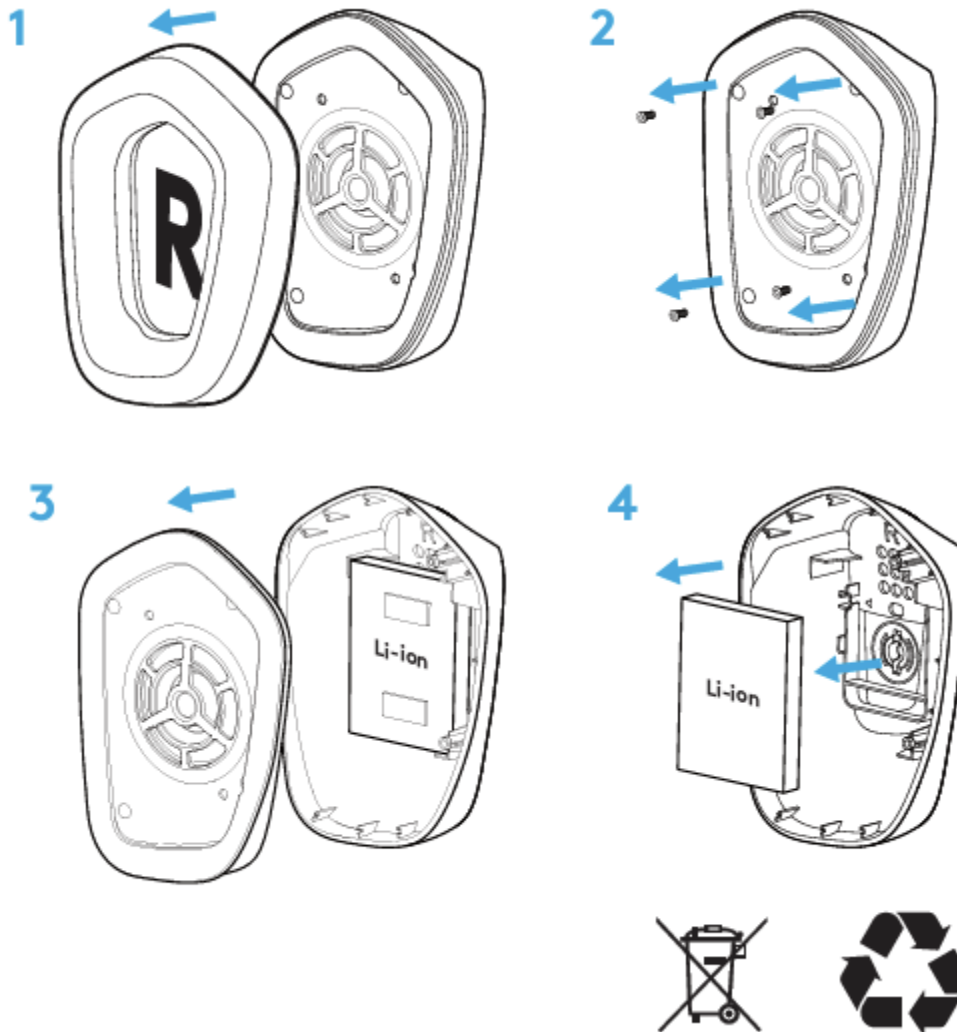
- Enable/disable DTS Headset:X 2.0 Surround Sound
- Enable/disable Blue VO!CE mic enhancement
- Adjust EQ settings
- Sidetone
- Lighting
- Mute button assignment

## RECYCLING

We encourage you to resell or donate working products. Otherwise, batteries, electronic and electrical equipment should not be disposed of with household waste. Wherever possible, they should be segregated and brought to an appropriate collection point to enable

recycling and avoid potential impacts on the environment and human health. For more information, contact your local authorities or place of purchase, or visit [www.logitech.com/recycling](http://www.logitech.com/recycling).

## BATTERY REMOVAL FOR RECYCLING



## SPECIFICATIONS

Headset Specifications	
Connection Type	LIGHTSPEED wireless via USB
USB VID_PID	0x046D_0x0AB6
Microprocessor	N/A
USB Ports (Built-in)	Type C for charging
Indicator Lights (LED)	Yes, RGB LED (2 zones)
Backlighting	N/A
Lightsync	Yes
Headphone type	Over the head
Driver Size	PRO G 40mm
Headphone Sensitivity	87.5dB SPL/mW
Microphone Frequency Response	20 Hz - 20 kHz
Input Impedance	39 Ohms (passive), 5k Ohms (active)
Microphone	Boom Mic (Detachable)
Microphone Type / Pickup pattern	Cardioid (Unidirectional)
Earcup Audio Controls	Yes
Water Repellent	No
Materials used	Plastic and Fabric
Earphone Design	Over the head
Color Coded (Left/Right)	No
Left / Right Letter Indication	Yes
Operational & Storage environmental requirements:	Operational environmental requirements (0 to +40 degree celsius) Storage environmental requirements (-40 to +70 degree celsius)
Battery Details	Lithium-ion



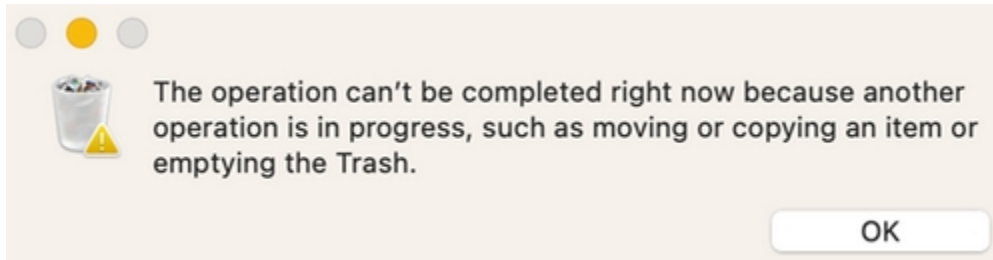
Headset Specifications	
Battery user replaceable?	No
Corded or Wireless	Wireless
Wireless range	15m (360 from center point)
Power Adapter Notes	Detachable power cord, Cradle and power supply combined unit, etc.

Physical Specifications				
Component	Length	Width	Depth	Weight
Headset	7.64 in (194 mm)	0.6 ft (190 mm)	3.27 in (83 mm)	9.81 oz (278 g)

## FAQs

- I am unable to uninstall G HUB on macOS Ventura

Some users might face an issue uninstalling G HUB on their first attempt. The user would see the following message:



If this happens, click OK, wait a few seconds, and then uninstall again to resolve the problem.

You can also try uninstalling Logitech G HUB by moving or dragging it to the trash.

- Can I downgrade to an older version of G HUB to continue using NVIDIA Broadcast?

We always encourage you to upgrade to the latest version of G HUB for the best stability, security, and features for your Logitech G devices. We suggest that you try out the standalone NVIDIA Broadcast app to access the NVIDIA Broadcast features with your Logitech G gear.

Download it here:

[https://international.download.nvidia.com/Windows/broadcast/1.4.0/NVIDIA\\_Broadcast\\_v1.4.0.28.exe](https://international.download.nvidia.com/Windows/broadcast/1.4.0/NVIDIA_Broadcast_v1.4.0.28.exe)

**NOTE:** After you upgrade to 2023.3.394992 or later G HUB software, you cannot roll back the update. Also, the features available on the previous version will be disabled or auto-uninstalled from your system. You can learn more at the NVIDIA Broadcast page here:

<https://www.nvidia.com/en-us/geforce/broadcasting/broadcast-app/>

- NVIDIA Broadcast Removed From Logitech G HUB

Starting with the 2023.3.394992 version of G HUB, Logitech will no longer support NVIDIA Broadcast technology on your headset or microphone within G HUB. There are alternative

Noise Reduction technologies available in G HUB including BLUE VO!CE. You can also use your Logitech G gear with the standalone [NVIDIA Broadcast app](#) for the latest and greatest features, download here:

[https://international.download.nvidia.com/Windows/broadcast/1.4.0/NVIDIA\\_Broadcast\\_v1.4.0.28.exe](https://international.download.nvidia.com/Windows/broadcast/1.4.0/NVIDIA_Broadcast_v1.4.0.28.exe)

We always encourage you to upgrade to the latest version of G HUB for the best stability, security, and features for your Logitech G devices. We suggest that you try out the standalone NVIDIA Broadcast app to access the NVIDIA Broadcast features with your Logitech G gear.

- [How Do I Pair a Wireless LIGHTSPEED USB Dongle with My Headset?](#)

If your device becomes unpaired or you receive a replacement Wireless LIGHTSPEED USB Dongle, follow these instructions to pair your device with the USB Wireless Adapter:

1. Plug-in Wireless LIGHTSPEED USB dongle.
2. Insert a pin into the reset port on the USB dongle to initiate pairing mode.
3. Light on the dongle will blink.
4. Turn on the headset.
5. Hold the "Microphone mute" button for 10-15 seconds to initiate pairing mode.
6. The light on the dongle will stop blinking and your headset should show in G HUB

- [Logitech G HUB - FAQs](#)

**VIDEO:** <youtu.be/a5a4iAhTaho>

## About G HUB

See the following link for more information:

<https://support.logi.com/hc/en-us/articles/4461144061975-Logitech-G-HUB-FAQs>

## WARRANTY – G733 LIGHTSPEED Wireless RGB Gaming Headset

[2 year limited hardware warranty](#)

See Terms of Use here: [logitech.com/en-my/tos/terms.html?id=3101](https://logitech.com/en-my/tos/terms.html?id=3101)

At Logitech, it is our goal to ensure you are completely satisfied with your Logitech purchase. We take pride in the products and services we offer, and want our customers to enjoy them just as much as we do. If you are experiencing an issue, please click on the following link to learn more about the Logitech warranty.

Check our Logitech Warranty here:

<https://support.logi.com/hc/en-us/articles/360023361413-Warranty-FAQ-AMR-AP>

## CONTACT US

Would you like to speak with us? We're here to help.

Get 24/7 live support with chat here: [logitech.com/support](https://logitech.com/support)

Phone: (Local) +1 646-454-3200

(Toll Free) +1 866-632-5644

Monday – Friday:

**9:00 a.m. – 9:00 p.m. Eastern Time**

## DOWNLOAD

See here to download G Hub:

[logitechg.com/ghub](https://logitechg.com/ghub)