

hohem

iSteady X3 SE

User Manual V1.1



 Tutorial Video

Contents

01 Product List	01
02 Overview	02
03 Charging	03
04 Unfolding & Folding	04
Unfolding & Mounting	04
Folding	04
05 Usage Modes	04
06 Bluetooth Connection	05
07 Buttons & Working Mode	05
Buttons	05
Working Mode	06
08 Remote Control Operation	07
09 Indicators	08
10 Hohem Joy App	10
Downloading	10
Gimbal Connection	10
Camera Interface	10
11 Auto Calibration & Firmware Update	11
12 Specifications	12
13 Compliance Information	13
14 Warning & Disclaimer	15
15 Warranty Terms	16
16 CALL CENTER -Toll Free	17

01 Product List



iSteady X3 SE



Remote Controller



USB-C Charging Cable



Tripod



Storage Pouch



Quick Start Guide



Warranty Card

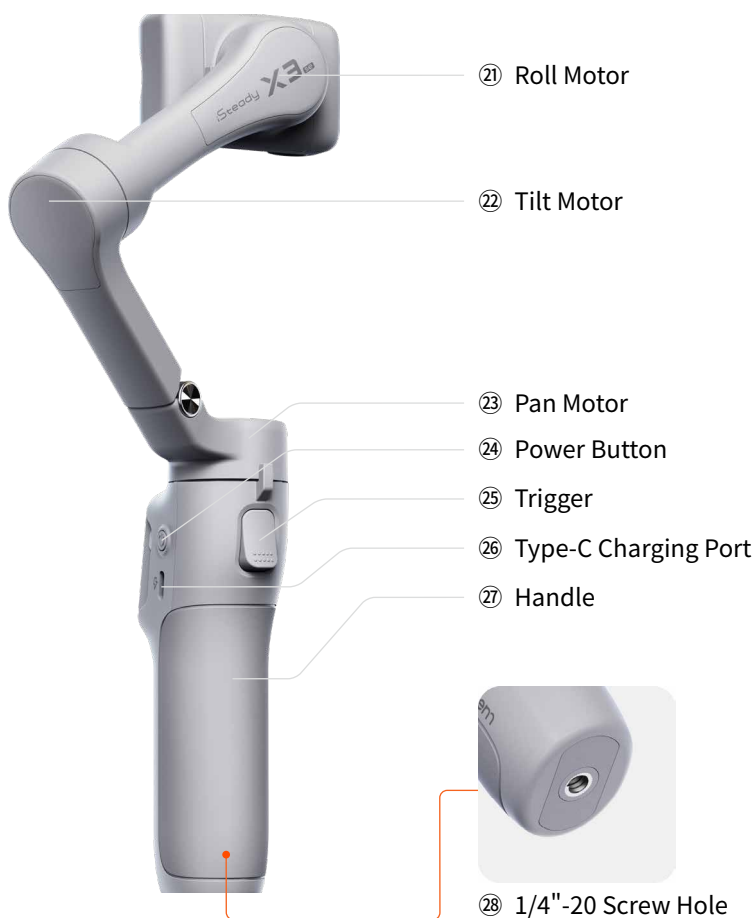
02 Overview

Front



Magnetic Remote Controller





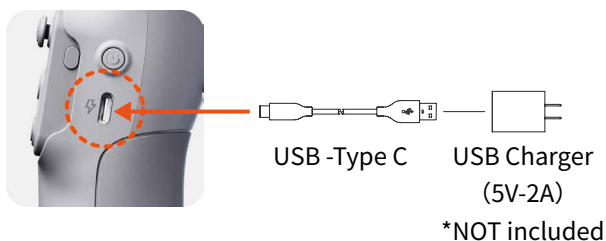
03 Charging

Please fully charge iSteady X3 SE before using it for the first time.

Charging Method:

Please use the standard USB-Type C charging cable to connect to the Type-C charging port on the gimbal handle for charging.

*It is recommended to use a 5V-2A USB charger (not included).



Charging Status:

- ① Battery indicator light flashing slowly indicates charging is in progress.
- ② Battery indicator light staying solid green indicates charging is complete.

*The colors of the indicator light represent various battery status levels. For details, refer to the [09 Indicators](#) section.

04 Unfolding & Folding

Compatible Smartphones
(≤ 7 inches)

Weight: $\leq 300\text{g}$
Width: 58–98mm
Thickness: $\leq 12.5\text{ mm}$

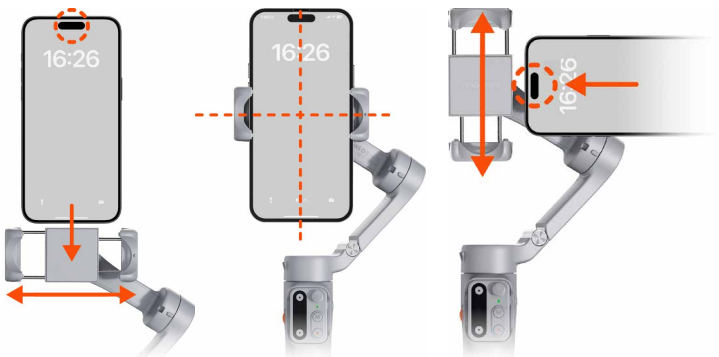
*For more information please contact us or refer to the Smartphone Compatibility List at <https://www.hohem.com/download>

Unfolding & Mounting

① Pull the arm as shown.



② Stretch the phone clamp to adapt to your smartphone's width and attach it to the center of the phone.



③ Press and hold - Power on/off



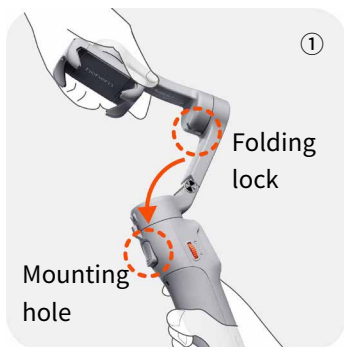
- Do not power on the gimbal without mounting a phone.
- If the phone is not centered during startup, it will reduce the gimbal's battery life. The gimbal will automatically enter standby mode if it detects no load or severe imbalance.
- When using the gimbal, avoid touching the pogo pins with your fingers to prevent poor contact.

Folding



Ensure the gimbal is powered off before folding it.

Remove the phone. Hold the handle and fold the arm downward and snap the folding lock and the mounting hole together as shown.



05 Usage Modes

There are 2 usage modes of iSteady X3 SE: **Handheld Mode**, and **Remote Mode**.

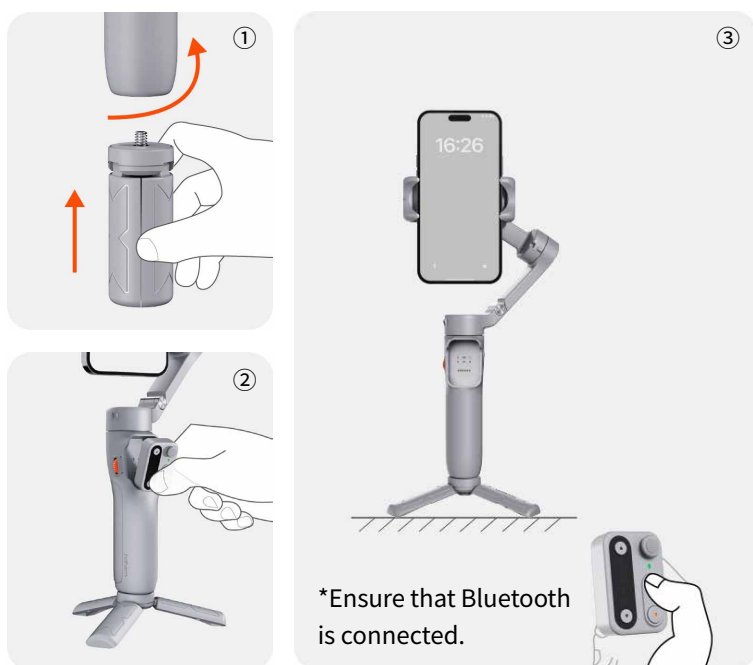


Handheld Mode

Simply unfold the gimbal for on-the-go shooting.

Remote Mode

Fully pull out the legs and unfold. Stand the gimbal on a desktop surface and remove the remote controller for long-distance remote shooting.



06 Bluetooth Connection



- ① Make sure the gimbal is powered on.
- ② Activate Bluetooth on your smartphone and select the device named "SX3S-XXXXXX" from the list of available devices.
- ③ Follow the on-screen instructions to connect and pair.
- ④ A steady light on the Bluetooth indicator signifies a successful connection.

07 Buttons & Working Mode

Buttons



Power Button

Long press: Power on/off

Double press: Enter standby mode(to exit, Double press again)

Press five times: Enter auto calibration



Side Wheel

Scroll up: Zoom in*

Scroll down: Zoom out*

*Used within the Hohem Joy app after Bluetooth connection.

Press five times: Re-pair the remote control

Press seven times: Clear the Bluetooth connection between gimbal and mobile phone



Trigger

Double press: Recenter the gimbal

Triple press: Change the phone between forward-facing and backward-facing

Long press: Enter All Lock Mode(L) (release the trigger to exit)



Type-C Charging Port

Connect to the power supply to charge the gimbal.

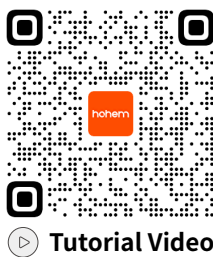


1/4"-20 Screw Hole

Connect to other accessories, such as a tripod.

Working Mode

iSteady X3 SE three-axis gimbal includes three axes of rotation: pan, tilt, and roll axes. The collaborative work between different axes results in the creation of 4 Working Modes, each tailored to specific filming needs:



 **Tutorial Video**

Roll axis

Tilt axis

Pan axis



Single press
to switch
Working
Modes.



Pan Follow Mode(PF)

Axes Engaged: Pan axis is active for following; Roll and Tilt axes do not follow.

Functionality: The gimbal allows the phone to pan left or right smoothly following the operator's movements, while maintaining a steady tilt and roll position.



Pan and Tilt Follow Mode(PTF)

Axes Engaged: Pan and Tilt axes are active for following; Roll axis does not follow.

Functionality: This mode enables the phone to follow the operator's pan (left/right) and tilt (up/down) movements, offering more dynamic control over the framing. The roll axis is inactive to maintain the horizon level.



Point of View Mode(POV)

Axes Engaged: All three axes (Roll, Tilt, and Pan) are active.

Functionality: This mode allows the phone to follow the operator's movements in all directions. It offers a "first-person" perspective, capturing footage as if the viewers are seeing through the operator's eyes.



All Lock Mode(L)

Axes Engaged: All three axes (Roll, Tilt, and Pan) do not follow the operator's movements.

Functionality: In Lock Mode, the phone's orientation remains fixed regardless of the gimbal's movements.

08 Remote Control Operation



*Note:

- When attached to the gimbal, the remote control automatically powers on and pairs once the gimbal is on. The gimbal also charges the remote during this time.
- If detached from the gimbal, the remote needs to be powered on separately. It will automatically pair with the gimbal upon powering on.



① Joystick

Push vertically and horizontally to change the tilt and pan axis directions.

Double press: Switch between zoom and roll control



② Adjustment Button

Long press: Control zoom*/roll rotation

*Used within the Hohem Joy app after Bluetooth connection.



③ Function Button

Double press: Recenter the gimbal

Triple press: Change the phone between forward-facing and backward-facing

Press five times: Re-pair the remote control

Press seven times: Clear the connection between the gimbal and remote

Long press: Enter All Lock Mode(L) (release button to exit)



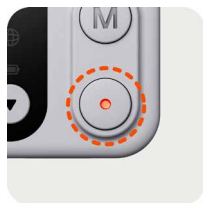
④ Mode Button

Single press: Switch working Modes

Double press: Switch between landscape and portrait mode

Triple press: Auto 180° roll rotation

Press five times: Enter auto calibration



⑤ Shutter Button

Single press: Take a photo or start/stop recording^[1]

Double press: Switch between photo/video mode^[2]

Triple press: Switch between front/rear cameras^[2]

Long press: Remote control power on/off^[3]

*Notes:

1. This feature requires the gimbal to be connected to the smartphone via Bluetooth.
2. It is available exclusively through the Hohem Joy App after connecting via Bluetooth.
3. When the remote control is attached to the gimbal, it can simultaneously power the gimbal on/off.

09 Indicators

Gimbal Handle



① Bluetooth Indicator

- **Solid light:** Bluetooth connected
- **Quick flash*3:** Bluetooth pairing cleared (remote control power on/off)
- **Slow flash:** Gimbal firmware updating
- **Off:** Bluetooth disconnected



② Gimbal Battery Indicator

- **Solid light:** Battery level 50%-100%
- **Solid light:** Battery level 20%-50%
- **Solid light:** Low battery

● **Quick flash:** Shutting down soon

*Battery indicator light flashing slowly indicates charging (different colors correspond to the current battery level)



③ Remote Connection Indicator

- **Solid light:** Remote connected
- **Quick flash*3:** Gimbal power on/off
- **Slow flash alternately:** Remote control re-pairing
- **Off:** Remote control disconnected
- **Slow flash:** Gimbal overloading
- **Solid light:** Gimbal firmware anomaly
- **Pulse:** Gimbal standby

Remote Control



① Adjustment Indicator

△ **Solid light:** Roll rotation control

▲ **Off:** Zoom in/out



② Bluetooth Indicator

✱ **Solid light:** Bluetooth connected

✱ **Quick flash*3:** Bluetooth pairing cleared (remote control power on/off)

✱ **Slow flash:** Gimbal firmware updating

✱ **Off:** Bluetooth disconnected



③ Working Mode Indicator

○ PF

⊕ PTF

⊗ POV

○ ⊕ ⊗ L

○ ⊕ ⊗ **Slow flash:** Auto Calibration

○ ⊕ ⊗ **Pulse:** Gimbal standby



④ Gimbal Battery Indicator

🔋 **Solid light:** Battery level 50%-100%

🔋 **Solid light:** Battery level 20%-50%

🔋 **Solid light:** Gimbal Low battery

🔋 **Quick flash:** Gimbal Shutting down soon

*Battery indicator light flashing slowly indicates charging (different colors correspond to the current battery level)



⑤ Remote Connection Indicator

🟢 **Solid light:** Remote connected/Charging completed

🟢 **Slow flash:** Charging/Firmware updating

🟢 **Quick flash*3:** Remote power on/power off/paired

🇮🇹 **Slow flash alternately:** Remote control re-pairing

⚫ **Off:** Remote control disconnected

🔴 **Solid light:** Remote low battery level

🔴 **Slow flash:** Remote shutting down soon

10 Hohem Joy App

Downloading

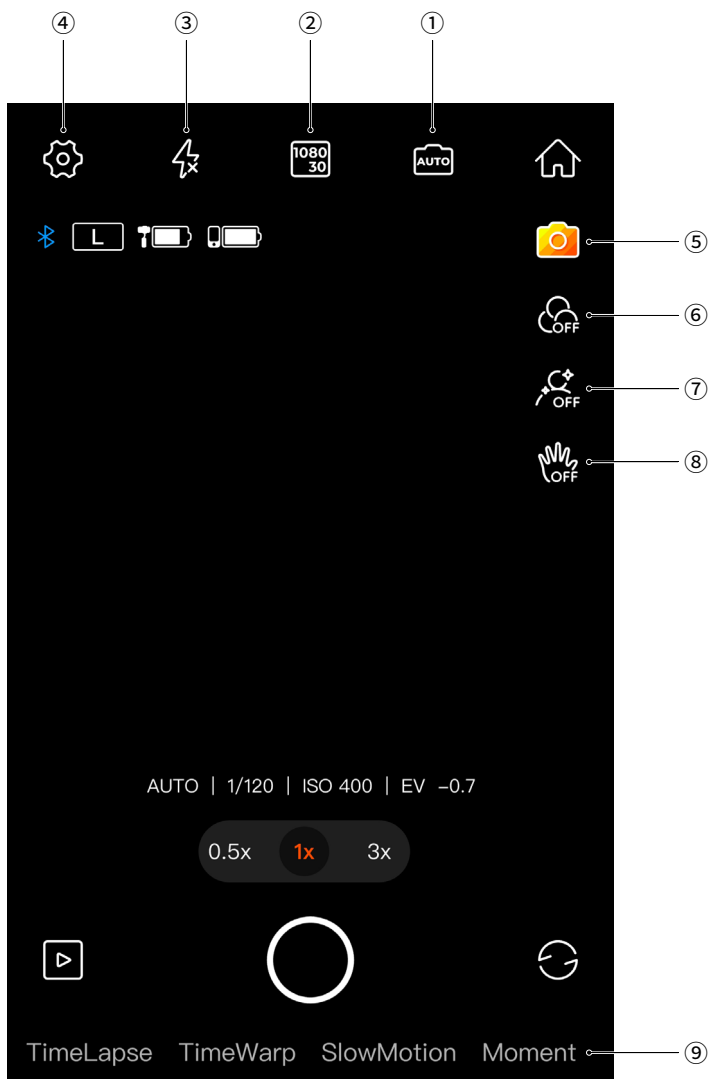
Scan the QR code or search "Hohem Joy" in App Store / Google Play to download the App.



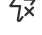







Gimbal Connection

- ① Attach your smartphone and turn on iSteady X3 SE.
- ② Turn on Bluetooth on your smartphone.
- ③ Open the Hohem Joy App. Follow the on-screen instructions to complete the connection.

Camera Interface



①	 Shooting Parameters	Set shutter speed, ISO and EV.
②	 Resolution and Frame Rate	Set resolution and video frame rate.
③	 Flash	Adjust the flash.
④	 General Settings	Includes gimbal parameters*, camera parameters, and gimbal information.
⑤	 Creative Studio	Provides shooting tutorials and ideas according to the situation or environment.
⑥	 Filter	Select a photo or a video filter.
⑦	 Beauty	Select from auto, slim face, or big eyes beauty modes.
⑧	 Gesture Control	Enables person tracking and shutter control. *For animal or object tracking, you can use box select to target on the screen.
⑨	Moment Templates	Various video templates are available; simply tap to start, and the camera will automatically execute the moves to create a video.



For more information, visit www.hohem.com, or scan the QR code to view tutorials.

11 Auto Calibration & Firmware Update

Auto Calibration

Auto calibration could reduce drift or slight deviation caused by nearby magnetic interference or human error.



① Place the gimbal on a hard, flat surface after setting it up and powering it on.



② Press the trigger button twice to recenter the gimbal.



③ Press the Power Button five times to enter auto calibration.



④ A single "beep" indicates that the calibration is complete.

*Note:

- During the auto calibration process, ensure that the remote control is connected to the gimbal.
- Failing to place the gimbal on a flat surface for calibration will result in calibration failure (e.g., attempting calibration while holding it in a vehicle) .
- If calibration fails, you'll hear two beeps and see the Working Mode indicators pulsing, indicating standby mode. Double-tap the power button to exit standby and retry calibration.

Firmware Update

You will be prompted in the Hohem Joy App if a new firmware update is available. Follow the on-screen instructions in the App to update firmware.

12 Specifications

iSteady X3 SE

Model	HPG-X3 SE
Weight	361g(±5g)
Dimensions	Unfolded: 128*75*275.5mm Folded: 98*44*160.5mm
Material	High-performance composite material
Maximum Load	300g
Mobile Phone Width	58mm~98mm
Battery Capacity	7.4V/1100mAh
	Approx. 11 hours
Operating Time	*Data sourced from Hohem Laboratory. Measured under ideal conditions with the gimbal fully balanced.
Charging Time	Approx. 2 hours (5V-2A)
Power Consumption	0.8W (Measured under ideal conditions.)
Controllable Angle	Pan: -120° to 210° Roll: -195° to 135° Tilt: -35° to 45°
Operating Temperature	-10°C to 45°C (14°F to 113°F)
Motor Protection	The gimbal will automatically shut down in case of improper operation to protect the motor.

13 Compliance Information

EU regulatory conformance:

The EIRP power of the device at maximal case is below the exempt condition, 20mW specified in EN62479: 2010. RF exposure assessment has been performed to prove that this unit will not generate the harmful EM emission above the reference level as specified in EC Council Recommendation(1999/519/EC).

Hereby,[Shenzhen Hohem Technology Co.,Ltd.] declares that the radio equipment type [HPG-X3 SE, HRT-04] is in compliance with Directive 2014/53/EU. The full text of the EU declaration of conformity is available at the following internet address: www.hohem.com

Operation frequency(Max power): 2402MHz-2480MHz(-5dBm)

FCC Statement

This device complies with Part 15 of the FCC Rules. Operation is subject to the following two conditions:

- (1) This device may not cause harmful interference.
- (2) This device must accept any interference received, including interference that may cause undesired operation.

NOTE: This equipment has been tested and found to comply with the limits for a **Class B** digital device, pursuant to part 15 of the FCC Rules. These limits are designed to provide reasonable protection against harmful interference in a residential installation.

This equipment generates uses and can radiate radio frequency energy and, if not installed and used in accordance with the instructions, may cause harmful interference to radio communications. However, there is no guarantee that interference will not occur in a particular installation. If this equipment does cause harmful interference to radio or television reception, which can be determined by turning the equipment off and on, the user is encouraged to try to correct the interference by one or more of the following measures:

- Reorient or relocate the receiving antenna.
- Increase the separation between the equipment and receiver.
- Connect the equipment into an outlet on a circuit different from that to which the receiver is connected.
- Consult the dealer or an experienced radio/TV technician for help

NOTE: The manufacturer is not responsible for any radio or TV interference caused by unauthorized modifications to this equipment. Such modifications could void the user's authority to operate the equipment.

RF Exposure

This equipment complies with FCC radiation exposure limits set forth for an uncontrolled environment.

IC Statement

This device complies with CAN ICES-003 (B)/NMB-003(B).

This device complies with Industry Canada licence-exempt RSS standard(s). Operation is subject to the following two conditions:

- (1) this device may not cause harmful interference, and
- (2) this device must accept any interference received, including interference that may cause undesired operation.

Cet appareil est conforme à la norme CAN ICES-003 (B)/NMB-003 (B).

Le présent appareil est conforme aux CNR d'Industrie Canada applicables aux appareils radio exempts de licence. L'exploitation est autorisée aux deux conditions suivantes :

- (1) l'appareil ne doit pas produire de brouillage, et
- (2) l'utilisateur de l'appareil doit accepter tout brouillage radioélectrique subi, même si le brouillage est susceptible d'en compromettre le fonctionnement.

RF Exposure

This equipment complies with IC radiation exposure limits set forth for an uncontrolled environment.

Cet équipement est conforme aux limites d'exposition aux radiations de la IC définies pour un environnement non contrôlé.

14 Warning & Disclaimer

Thank you for purchasing the Hohem product. By using this product, you hereby signify that you have read this disclaimer and warning carefully. In addition, you understand and agree to abide by the terms and conditions herein. You acknowledge that you are solely responsible for your own conduct while interacting with this product, and for any consequences thereof. You agree to use this product only for purposes that are proper and in accordance with all applicable laws, rules, and regulations, and all terms, precautions, practices, policies and guidelines Hohem has made and may make available. Hohem accepts no liability for damage, injury, or any legal responsibility incurred directly or indirectly from the use of this product. The user shall observe safe and lawful practices including, but not limited to, those set forth in this document.

This document and all other collateral documents are subject to change at the sole discretion of Hohem. For up-to-date product information, visit www.hohem.com and click on the product page for this product.

15 Warranty Terms

- ① Customers are entitled to replacement service in case of quality deficits or functional disorders found in the product within seven (7) to thirty (30) calendar days of receiving the product, subject to the policy of the actual sales platform.
- ② The official warranty period is 12 months (1 year) counting from the date of selling under normal use. The actual warranty coverage is subject to applicable local laws and regulations in the region where the product is sold, as well as the specific warranty policies of the sales platform. Accessories are excluded from warranty service. The warranty service is subject to normal use. Damage exceeding this period, or damage caused by force majeure, is not covered by warranty. This includes damages not related to the product's quality such as collisions, burns, unauthorized repairs or modifications, foreign objects (water, oil, sand, etc.), and damages resulting from improper installation or use. Our company can offer paid repair services for such issues.
- ③ Please keep and provide the warranty card or an equivalent proof of purchase when requesting warranty service.

16 CALL CENTER -Toll Free

UNITED STATES:

+1(888)9658512

Mon-Fri: 9:00AM-5:00PM(EST)

UNITED KINGDOM:

+44(0)808 2737578

Mon-Fri: 2:00PM-10:00PM(GMT +0)

CANADA:

+1(855)758 8939

Mon-Fri: 9:00AM-5:00PM(EST)

BRAZIL:

+55 (0)800 5911897

Mon-Fri: 10:00AM-6:00PM(GMT -3)

hohem

Email:

service@hohem.com

Website:

www.hohem.com

Manufacturer:

Shenzhen Hohem Technology Co., Ltd.



Connect us at
Facebook

hohem

www.hohem.com

