

WiFi Digital Photo Frame with Touchscreen LCD Display

Quick Start Guide



aluratek.com

Copyright © 2024 Aluratek, Inc. All Rights Reserved.

Operating Instructions

Step 4: Creating Your Account in the APP

- 1. Open the “Aluratek Smart Frame” APP (Allow notifications if prompted)
- 2. Select “Sign Up” (Image 3)
- 3. Create “Username” “Password” (write this down as you will need it later)
- 4. Enter your email address then press the “Submit” Button. (Image 4 & 5)

Operating Instructions

Step 6: Send Pictures from your Smartphone / Tablet to the frame using the Aluratek Smart Frame APP

- 1. Select the photo or video icon within the APP to take a live photo / video. If prompted to access the camera, please “Allow” access.
- 2. Select the “Files” icon to send a photo or video previously saved to your smartphone / tablet. Select the files you would like to send then click done.
- 3. Under “Push Device” Select the frame that you would like to send the files to.
- 4. Select the right arrow (send mail) icon to send.
NOTE: You can send up to 9 photos at a time to speed up the photo delivery to the frame.

Operating Instructions

Welcome! In just 7 steps, you will connect your phone / tablet to your Aluratek digital photo frame. Lets get started.

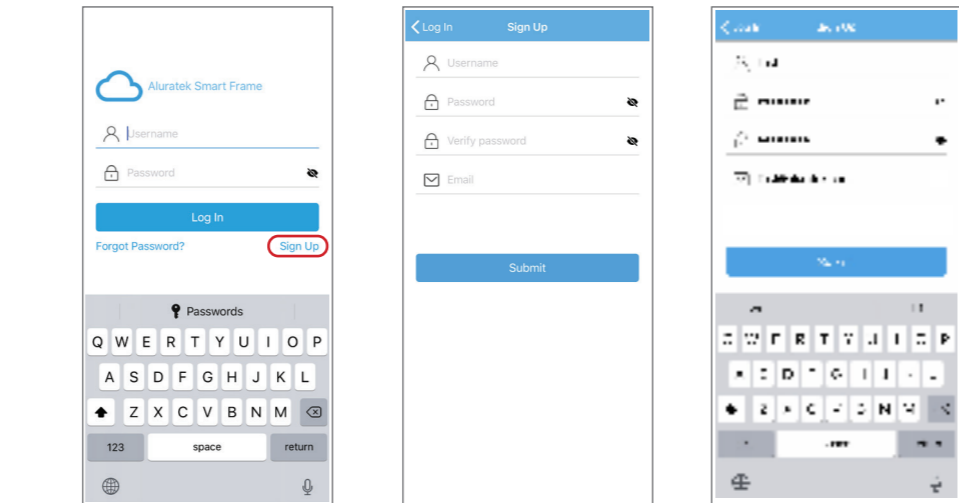
Step 1: Power On

- Connect your WiFi Frame to an AC outlet. The photo frame will power on

Step 2: Connect to your WiFi

- 1. Select the WiFi connection utilizing the photo frame touch screen display. (if required, enter the WiFi password)
- 2. “Connected” will appear below your selected WiFi network.
- 3. Press the arrow in the upper right corner to move to the next step

Operating Instructions



Operating Instructions

Step 7: Enjoy Your Photos!

- 1. On the main screen on your photo frame - select the photos in the upper left box
- 2. Use the menu on the left to select the source for your photos typically, that is “ALL”
- 3. Tap a photo in the right column to start enjoying your photos.

Operating Instructions

Step 3: Download the ‘Aluratek Smart Frame” APP to your Smartphone / Tablet

- 1. Go to the App store on your Apple or Anroid device and search for “Aluratek Smart Frame” then install and open. (Image 1 & 2)
NOTE: Make certain you download “Aluratek Smart Frame” and not “Aluratek WIFI Frame”
- 2. Tap “Complete” on the device info screen

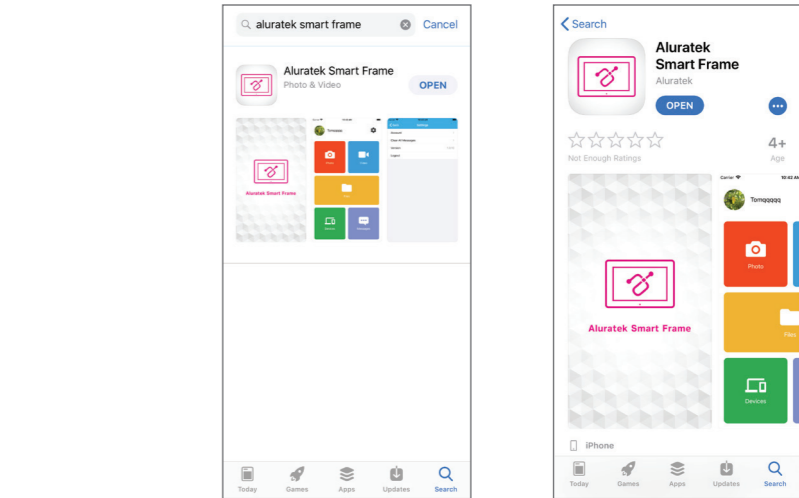
Operating Instructions

Step 5: Bind Your Frame

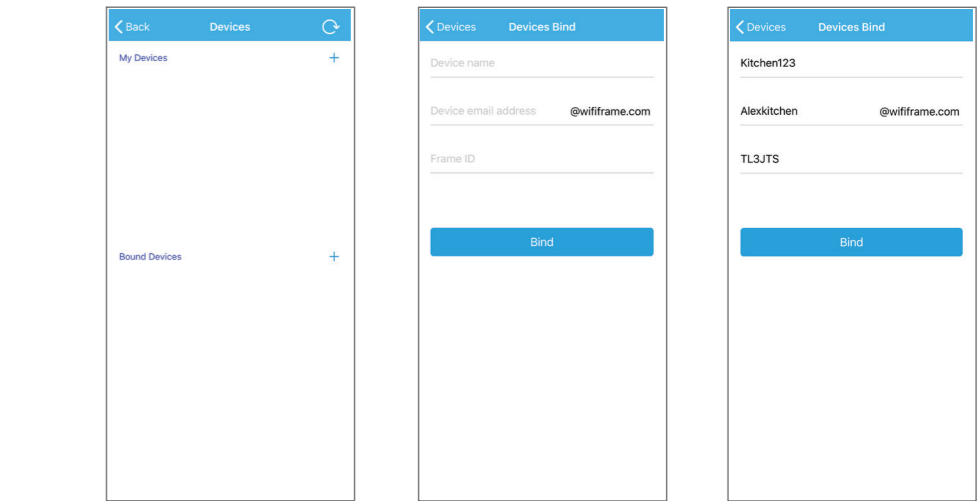
- 1. Make sure you are signed in within the APP
- 2. Select “Devices” within the APP
- 3. Click the “+” next to My Devices (Image 6)
- 4. Enter a device Name that will help you identify this particular frame. For example “Kitchen123”.
- 5. Create a unique email address name for your frame so you can email pictures/ videos. Tip: Make it unique using 6 or more characters including letters, numbers, and symbols. For example, Alexkitchen@wififrame.com (Image 7)
- 6. Enter your frame ID - this is found on your WiFi frame by selecting “Settings” the “Device info”. See “Frame ID:” xxxxxx at the top of the screen. (Image 8)
- 7. Enter your unique “Frame ID” into the field on the app. Your frame will notify you that a request has been sent to allow a user to bind to it. Touch “Accept” to bind.
- 8. On your digital frame go to “Settings” the “User Management” to see “Pending User Request” and touch “Accept”.
- 9. Your phone and frame are now connected!

Notes

Operating Instructions



Operating Instructions



Notes