

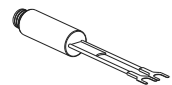
QUICK SETUP GUIDE

AM/FM Amplified
Radio Antenna

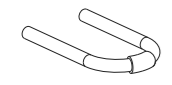
NS-ANT20FM

This antenna is specifically designed for indoor AM/FM radio reception, featuring a compact and stylish housing to complement your AM/FM radio.

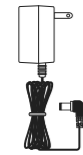
PACKAGE CONTENTS



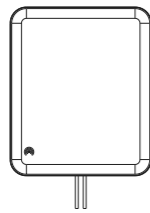
Balun adapter



Antenna stand



Power adapter



Antenna



Quick Setup Guide

FEATURES

- Designed specifically for receiving AM/FM radio broadcasts
- Compatible with HD Radio broadcasts
- High-gain amplifier maximizes receiving range and sound quality
- Weighted, non-slip base for easy placement

SETTING UP AND USING YOUR ANTENNA

Install this antenna near your AM/FM radio or receiver with an AM/FM tuner.

- 1 Select a location to place your antenna. See “Tips for Better Reception” for more information.

Note: This is an indoor antenna. Do not place it outside.

- 2 If your radio has a 75-Ohm FM connector, connect the antenna’s coaxial cable to your radio’s 75-Ohm FM connector.

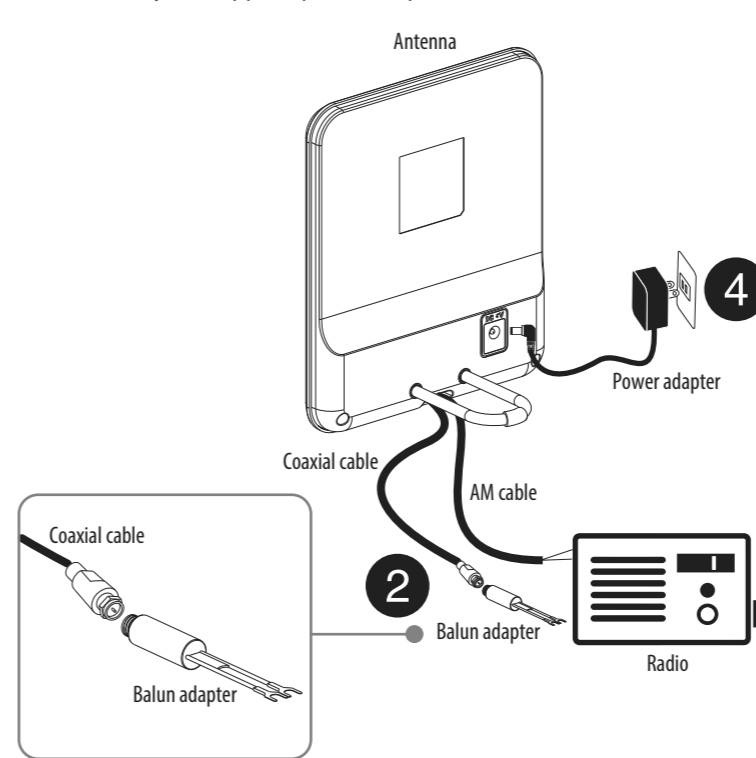
OR

If your radio has a 300-Ohm FM connector, connect the antenna’s coaxial cable to the balun adapter, then connect the other end of the balun adapter to your radio’s push-button or screw terminals.

- 3 Connect the antenna’s AM cable to your radio’s push-button or screw terminal AM connector.

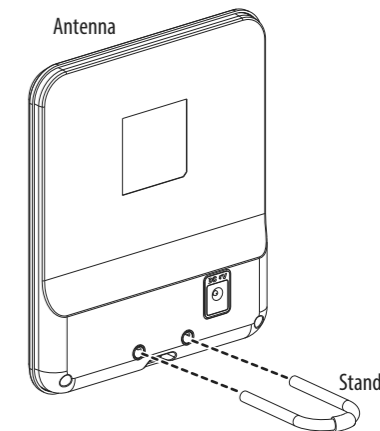
- 4 Connect the power adapter to the antenna’s DC 12V input, then plug the AC end into an AC outlet.

Note: Use only the supplied power adapter.



- 5 Attach the stand to your antenna, then place it on a stable surface.

- 6 Turn on the radio and begin tuning.



Note: When you finish the installation, tune your radio to check the signal strength and quality. If the quality is not good enough, move the antenna to get the best reception.

TIPS FOR BETTER RECEPTION

For the best reception:

- Install the antenna as high as possible to avoid possible obstacles between the antenna and the transmission tower.
- If possible, place the antenna near windows.
- Keep the antenna away from sources of interference such as air conditioners, hair dryers, and microwave ovens.
- Test the antenna in multiple locations to find the strongest signal.
- This antenna is an indoor antenna. Do not place it outside.
- This antenna works with any radio tuner with external antenna inputs. See your device's manual to check compatibility.

TROUBLESHOOTING

PROBLEM	SOLUTION
Cannot find any stations	<ul style="list-style-type: none">• Make sure that all your connections are correct and secure.• Adjust the direction and position of antenna to find the best reception angle.
Sound quality is good for some stations and poor or no reception for others	<ul style="list-style-type: none">• Move your antenna, then try tuning for stations again.• Keep the antenna away from TVs and sources of interference, such as air conditioners, hair dryers, and microwave ovens.• Avoid placing your antenna near large metal objects or in buildings with metal siding.• Your antenna may be too far from the broadcast antenna to receive an adequate signal. The signal may also be affected by obstructions between the broadcast antenna and your antenna.

SPECIFICATIONS

- Dimensions (H×W×D): 6.7 × 5.6 × .95 in. (17.1 × 14.3 × 2.4 cm)
- Range: 50 miles
 - ***Note:** Mile range will vary depending on a wide range of environmental and geographic factors
- Frequency range: AM: 530~1610 KHz / FM: 88~108 MHz
- Amplifier gain: FM 16±3dB
- Output return loss: < -6dB (88~108 MHz)
- RF output impedance: Unbalanced 75 ohm FM radio; 300 ohm balanced
- RF coaxial cable: 1.5C-2V/ 1.8M F male

ONE-YEAR LIMITED WARRANTY

Visit www.insigniaproducts.com for details.

CONTACT INSIGNIA:

For customer service, call 1-877-467-4289 (U.S. and Canada) or 01-800-926-3000 (Mexico)
www.insigniaproducts.com

INSIGNIA is a trademark of Best Buy and its affiliated companies
Distributed by Best Buy Purchasing, LLC
7601 Penn Ave South, Richfield, MN 55423 U.S.A.
©2019 Best Buy. All rights reserved.
Made in China