

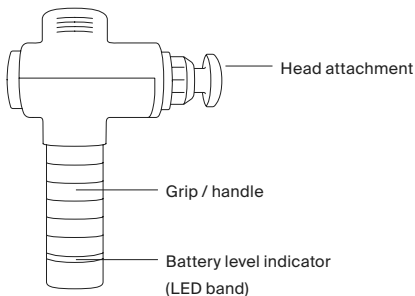
**Let's  
get  
started**



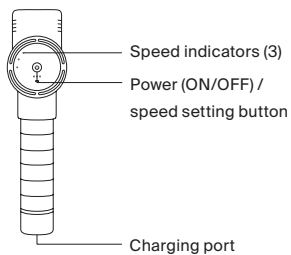


# Meet your new Hypervolt 2

## Side view



## Rear view



# Before you start

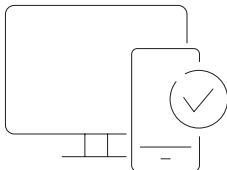
## Download the Hyperice App

Get the most out of your Hypervolt 2, or any Hyperice device with the Hyperice App. Follow along to guided routines, track your progress, and get tips and tricks from the world's best pros.



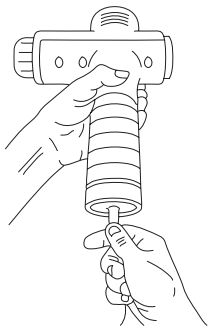
## Register your device

Activate your warranty and ensure easy returns, repairs, or refunds at [hyperice.com/register-product](https://hyperice.com/register-product).



## Charge your new Hypervolt 2

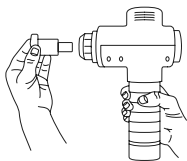
Plug in your new Hypervolt 2 with the provided Hyperice charger.  
Fully charge the battery for up to four hours before first use.



# Start your session

## Choosing head attachments

Choose desired head attachment and insert directly into the opening while pushing firmly.



## Powering up

Turn your Hypervolt 2 ON by pressing the power/speed setting button. Hold for two seconds until the battery level indicator (LED band) illuminates, then release.



## Activating pressure sensor

Activate the pressure sensor by pressing the power/speed setting button once. Your Hypervolt 2 is now ready for use.

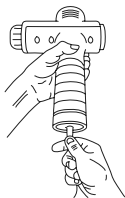
## Adjusting speeds

Choose your desired speed (1-3) by pressing the power/speed setting button once per speed. The white lights on the back will indicate the current speed.



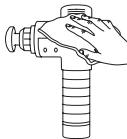
## Recharging

Full charge is indicated when the LED light band on the handle remains green and fully illuminated. Only use the provided Hyperice charger.



## Caring for your Hypervolt 2

Make sure the power is OFF and the battery charger is not attached. Use a damp, clean cloth to gently wipe your device. Store in a clean, cool, dry place, out of direct sunlight, when not in use.



# We're here for you

## HyperCare®

Get award-winning support from our HyperCare team – a group of specialists dedicated to your overall well-being and expert guidance on Hyperice products.



1.855.734.7224



hyperice.com



customersupport@hyperice.com