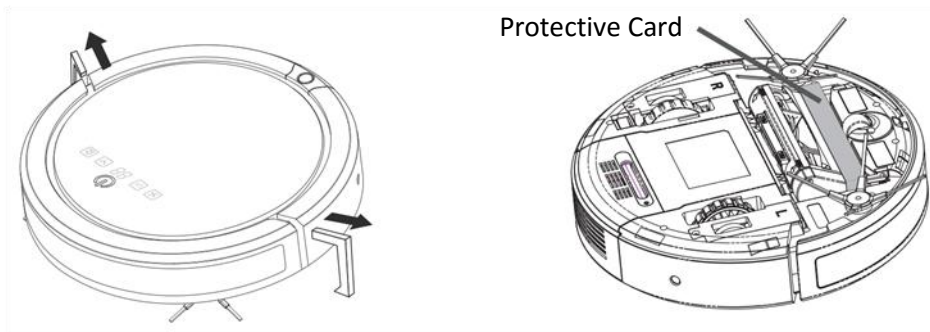
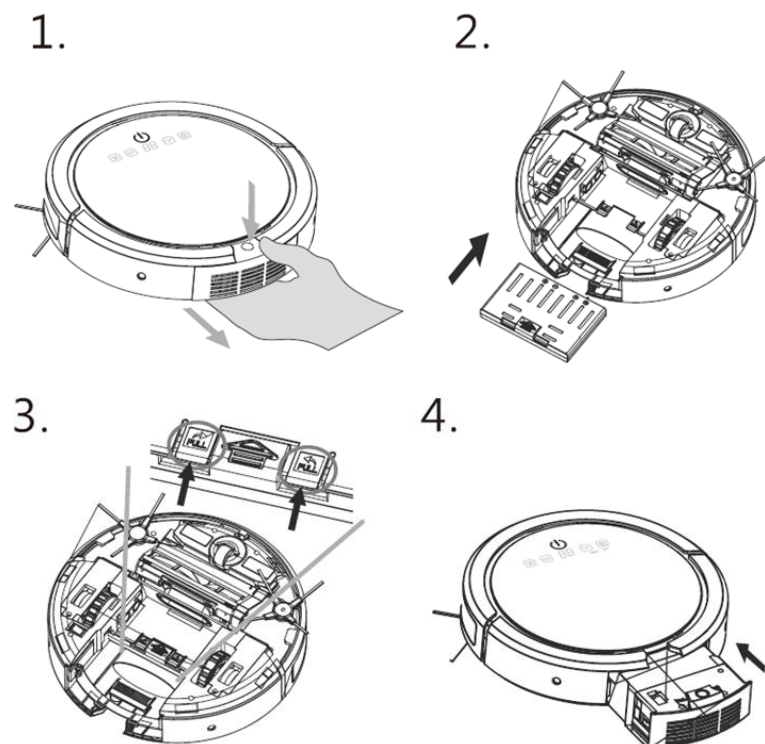


CR-V01/V01K | Quick Start Guide

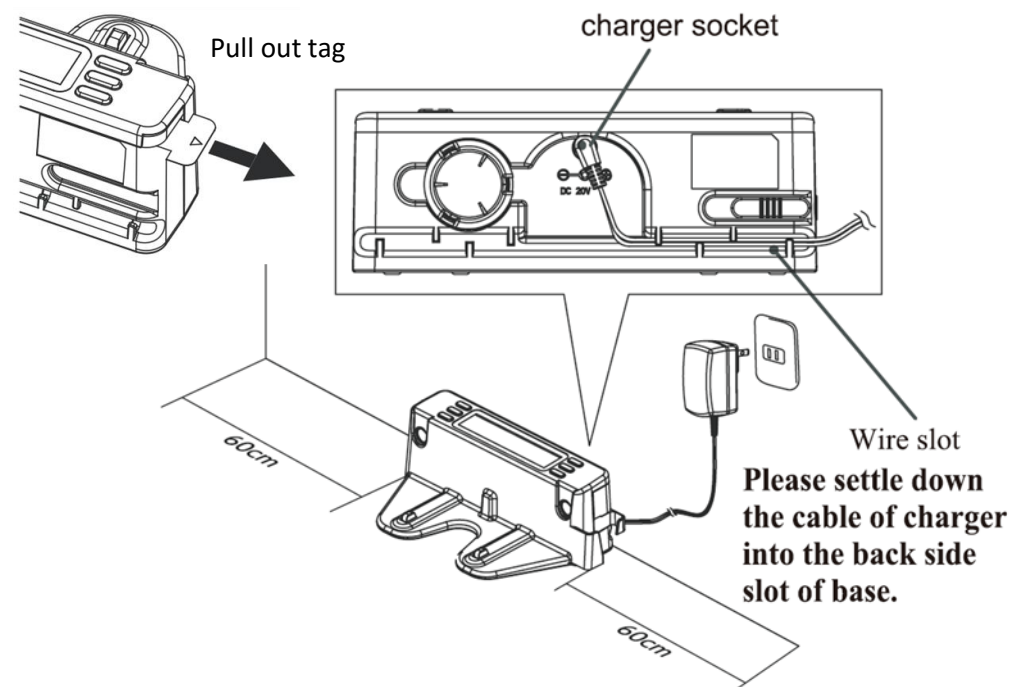
1. Remove Protective Foams & Cards



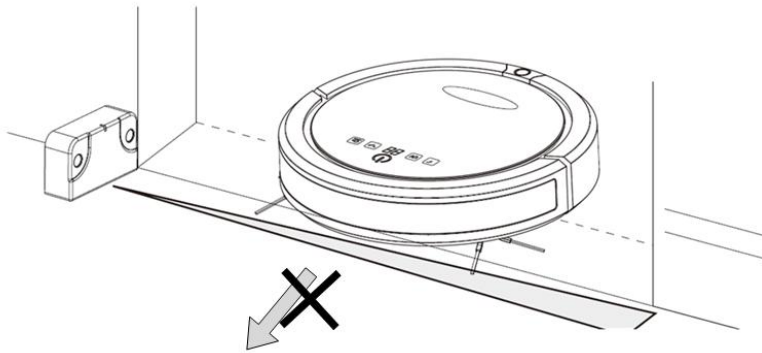
2. Install Battery and Turn On Vacuum Robot



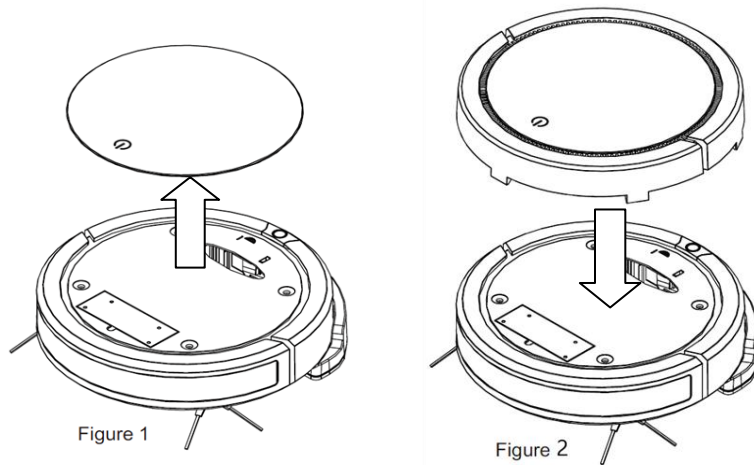
3. Install Home Base & Virtual Wall



Put in 2x AA rechargeable battery (provided) to Virtual Wall and place it to door to restrain robot working area

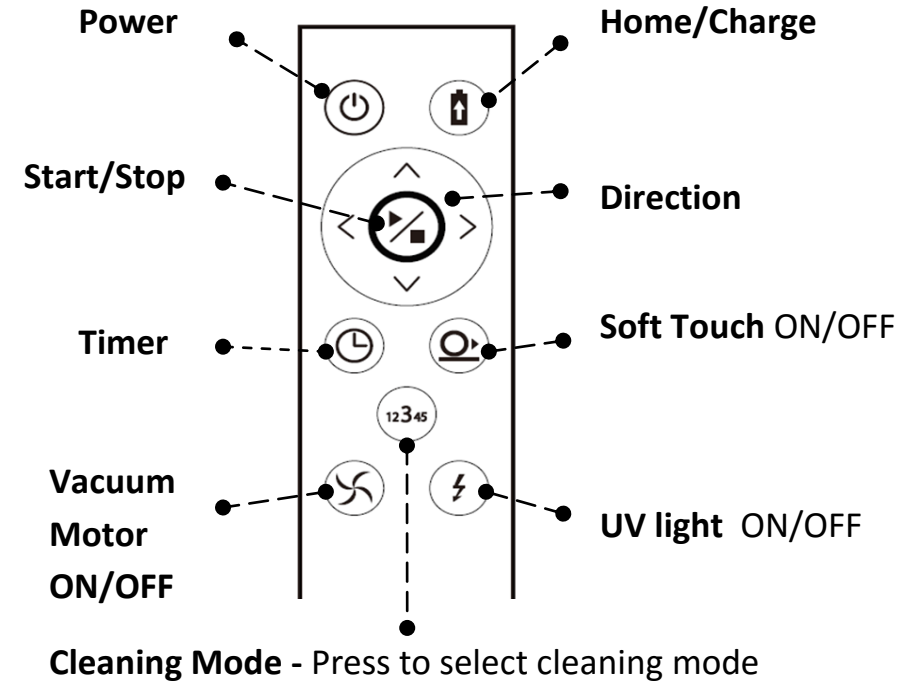


5. Air Purifier (CR-V01K)



6. Remote Control

Test the Robot: Pull out battery insulating tag on remote control, place Robot 3~6 ft away from Home Base (make sure they are turned on), press **HOME/CHARGE** button on remote. The robot will find its way home and start charging



Please refer to User Manual for detailed product functions such as *scheduling, maintenance, air purifier control*



Do NOT return this product
Feel free to contact us for support

www.COVERproducts.com/support/
1-888-566 6736